

# Weekly SLA Customer Report

Customer JSG\_Production  
 Database ID 102



Harddisk Usage JSG\_PRD\_CRUSHER

	Free disk space on C: (%)	Total disk space on C: (Gb)	Used disk space on C: (Gb)
2-4-2022	38	79	50
1-4-2022	38	79	50
31-3-2022	38	79	50
30-3-2022	38	79	50
29-3-2022	38	79	50
28-3-2022	38	79	49
27-3-2022	38	79	49

Harddisk Usage JSG\_PRD\_CYPHER

	Free disk space on C: (%)	Total disk space on C: (Gb)	Used disk space on C: (Gb)
2-4-2022	58	79	33
1-4-2022	58	79	33
31-3-2022	58	79	33
30-3-2022	58	79	33
29-3-2022	58	79	33
28-3-2022	58	79	33
27-3-2022	58	79	33

# Weekly SLA Customer Report

Customer JSG\_Production  
Database ID 102



## Harddisk Usage JSG\_PRD\_GUINAN

	Free disk space on C: (%)	Total disk space on C: (Gb)	Used disk space on C: (Gb)
2-4-2022	60	79	32
1-4-2022	60	79	32
31-3-2022	60	79	32
30-3-2022	60	79	32
29-3-2022	60	79	32
28-3-2022	60	79	32
27-3-2022	60	79	32

## Harddisk Usage JSG\_PRD\_LAFORGE

	Free disk space on C: (%)	Total disk space on C: (Gb)	Used disk space on C: (Gb)
2-4-2022	24	149	114
1-4-2022	24	149	114
31-3-2022	24	149	113
30-3-2022	24	149	113
29-3-2022	24	149	113
28-3-2022	24	149	113
27-3-2022	24	149	113

# Weekly SLA Customer Report

Customer JSG\_Production  
Database ID 102



## Harddisk Usage JSG\_PRD\_PICARD

	Free disk space on C: (%)	Total disk space on C: (Gb)	Used disk space on C: (Gb)	Free disk space on D: (%)	Total disk space on D: (Gb)	Used disk space on D: (Gb)
2-4-2022	57	149	65	52	1,024	490
1-4-2022	57	149	65	53	1,024	479
31-3-2022	57	149	65	55	1,024	459
30-3-2022	57	149	65	55	1,024	462
29-3-2022	57	149	65	55	1,024	461
28-3-2022	57	149	65	55	1,024	460
27-3-2022	56	149	66	55	1,024	457

## Harddisk Usage JSG\_PRD\_RIKER

	Free disk space on C: (%)	Total disk space on C: (Gb)	Used disk space on C: (Gb)	Free disk space on D: (%)	Total disk space on D: (Gb)	Used disk space on D: (Gb)
2-4-2022	71	199	58	41	1,024	599
1-4-2022	71	199	58	42	1,024	590
31-3-2022	71	199	58	43	1,024	580
30-3-2022	71	199	58	44	1,024	570
29-3-2022	71	199	58	46	1,024	555
28-3-2022	71	199	58	47	1,024	543
27-3-2022	71	199	58	48	1,024	531

# Weekly SLA Customer Report

Customer JSG\_Production  
Database ID 102



## Harddisk Usage JSG\_PRD\_SAREK

	Free disk space on C: (%)	Total disk space on C: (Gb)	Used disk space on C: (Gb)	Free disk space on D: (%)	Total disk space on D: (Gb)	Used disk space on D: (Gb)
2-4-2022	66	149	51	54	750	346
1-4-2022	65	149	52	53	750	352
31-3-2022	65	149	52	54	750	342
30-3-2022	65	149	52	57	750	325
29-3-2022	65	149	52	58	750	311
28-3-2022	65	149	52	60	750	302
27-3-2022	65	149	52	66	750	251

## Harddisk Usage JSG\_PRD\_TEBOK

	Free disk space on C: (%)	Total disk space on C: (Gb)	Used disk space on C: (Gb)
2-4-2022	61	79	31
1-4-2022	61	79	31
31-3-2022	61	79	31
30-3-2022	61	79	31
29-3-2022	61	79	31
28-3-2022	61	79	31
27-3-2022	61	79	31

# Weekly SLA Customer Report

Customer JSG\_Production  
Database ID 102



## Harddisk Usage JSG\_PRD\_TOMALAK

	Free disk space on C: (%)	Total disk space on C: (Gb)	Used disk space on C: (Gb)
2-4-2022	52	79	38
1-4-2022	52	79	38
31-3-2022	52	79	38
30-3-2022	52	79	38
29-3-2022	52	79	38
28-3-2022	52	79	38
27-3-2022	52	79	38

## Harddisk Usage JSG\_PRD\_TROI

	Free disk space on C: (%)	Total disk space on C: (Gb)	Used disk space on C: (Gb)
2-4-2022	48	149	78
1-4-2022	49	149	77
31-3-2022	49	149	76
30-3-2022	49	149	76
29-3-2022	48	149	77
28-3-2022	47	149	79
27-3-2022	47	149	79

# Weekly SLA Customer Report

Customer JSG\_Production  
Database ID 102



Harddisk Usage JSG\_PRD\_WORF

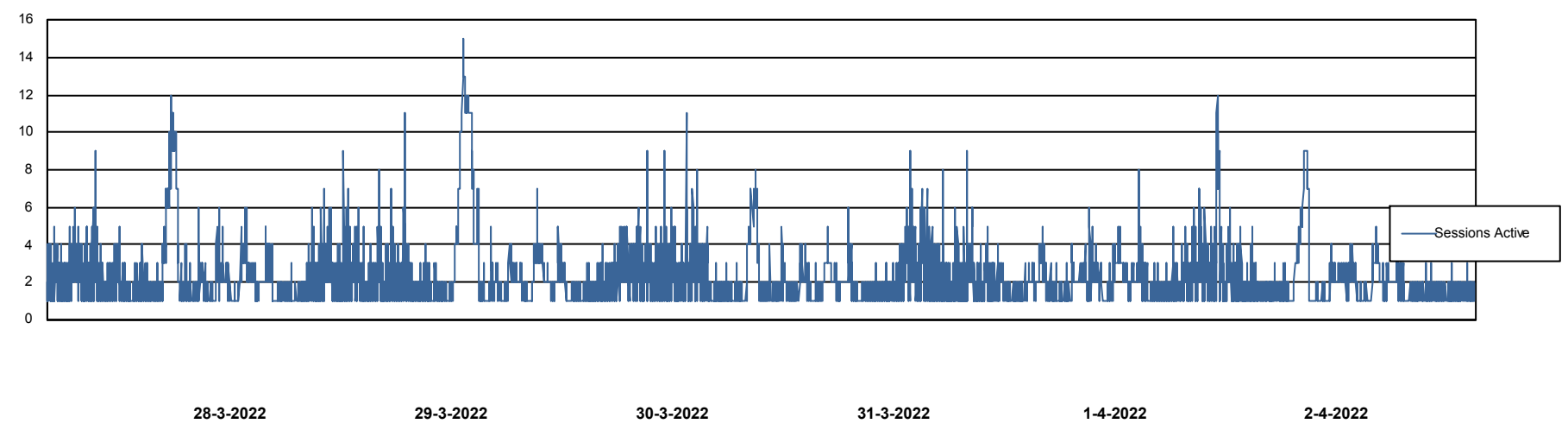
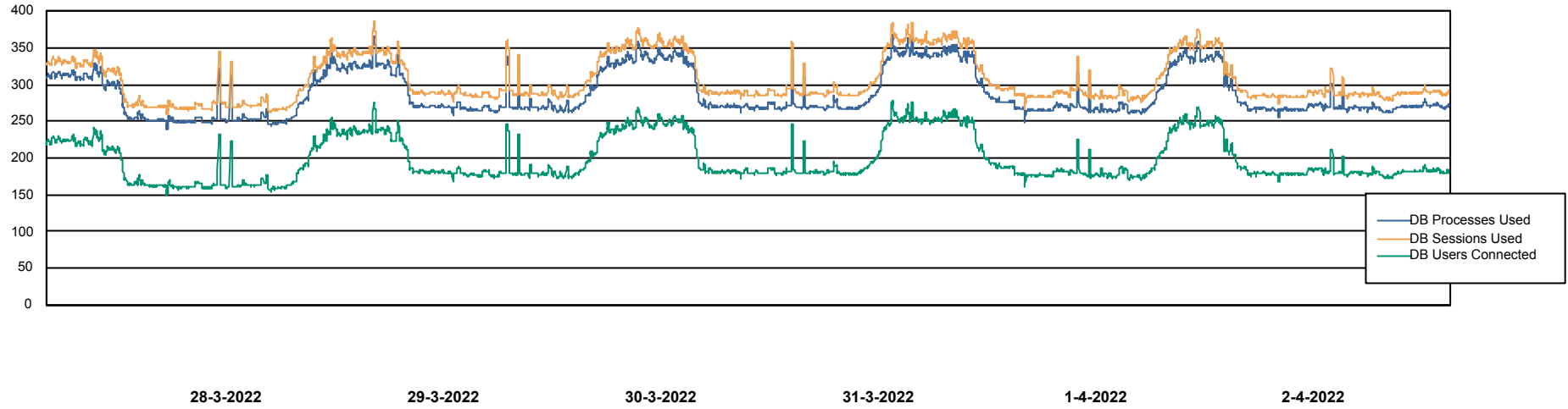
	Free disk space on C: (%)	Total disk space on C: (Gb)	Used disk space on C: (Gb)
2-4-2022	44	149	84
1-4-2022	43	149	85
31-3-2022	44	149	83
30-3-2022	45	149	81
29-3-2022	46	149	80
28-3-2022	47	149	79
27-3-2022	47	149	79

# Weekly SLA Customer Report

Customer JSG\_Production  
Database ID 102



## Database Performance JSG\_PRD\_PICARD\_DB



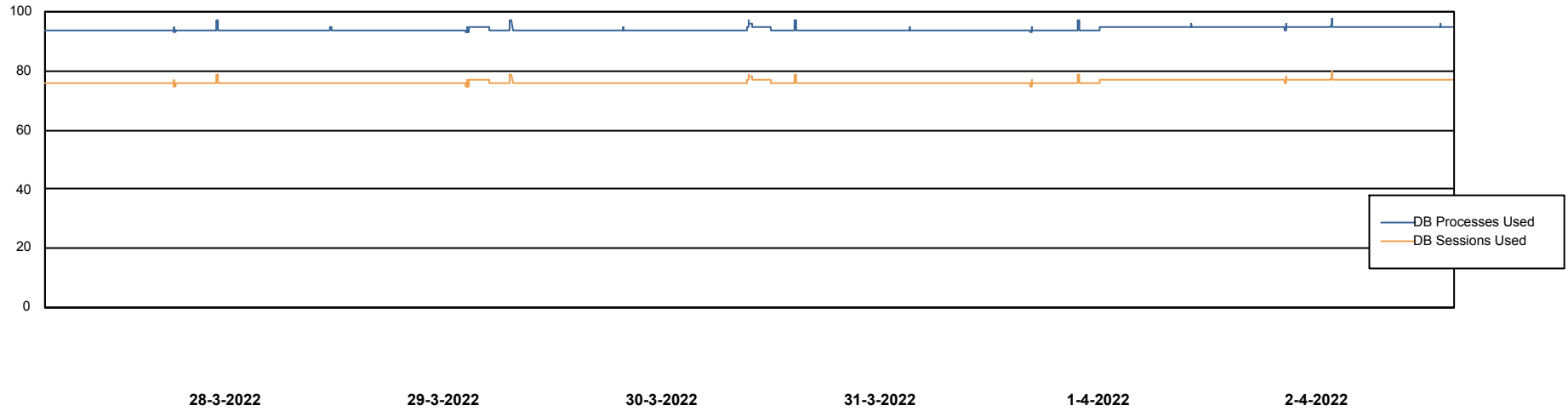
# Weekly SLA Customer Report

Customer JSG\_Production  
Database ID 102



## Database Performance JSG\_PRD\_RIKER\_DB

DB Processes Max 0  
DB Processes Max 4  
DB Processes Max 1,000

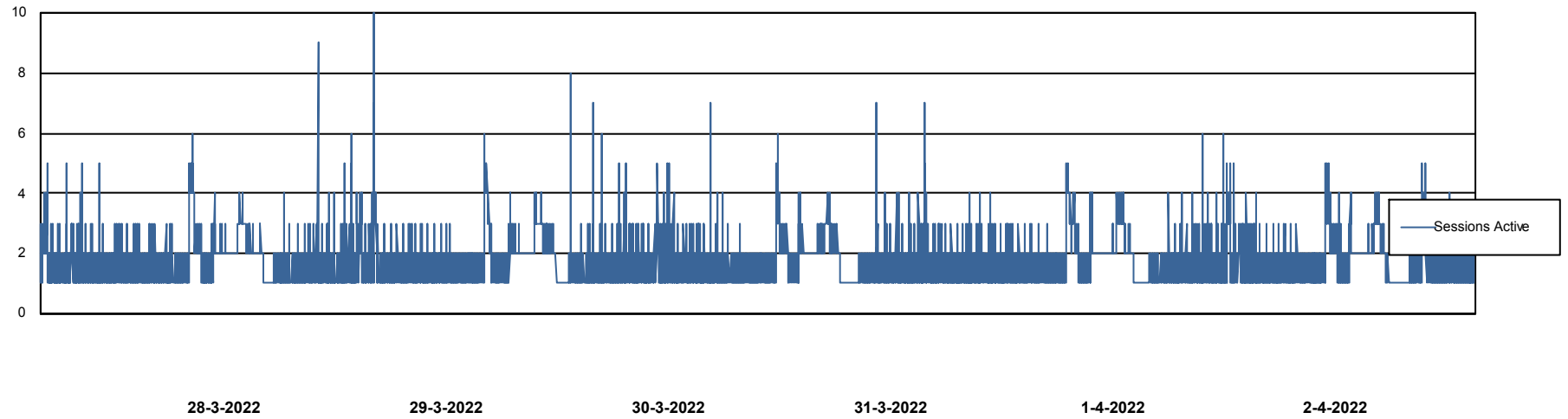
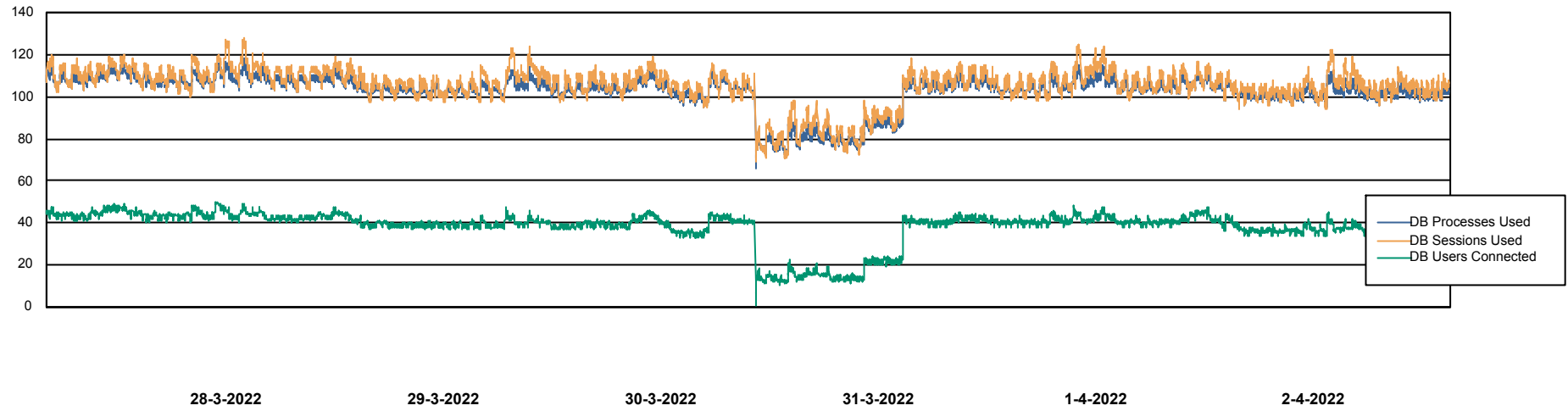


# Weekly SLA Customer Report

Customer JSG\_Production  
Database ID 102



## Database Performance JSG\_PRD\_SAREK\_DB



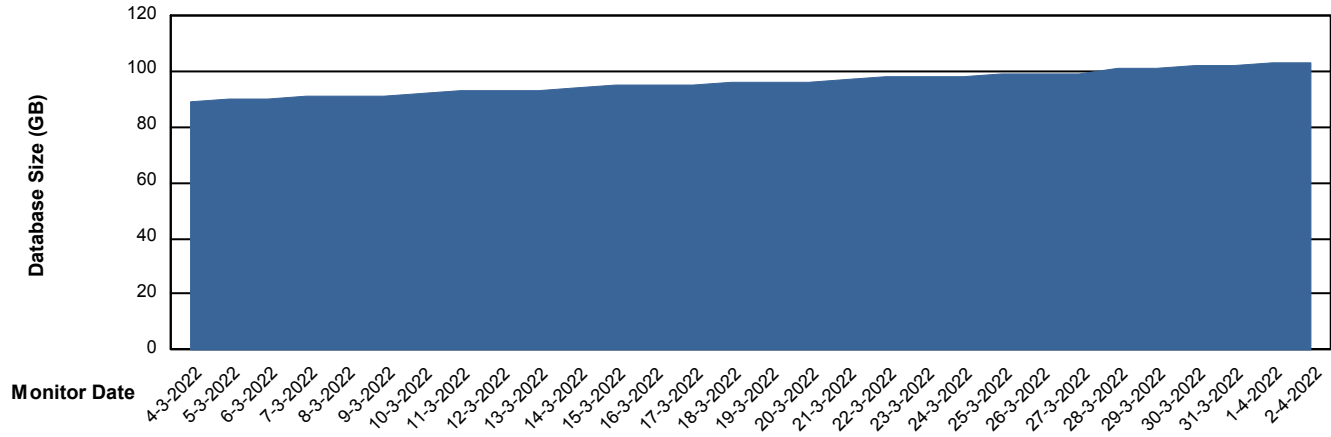
# Weekly SLA Customer Report

Customer JSG\_Production  
Database ID 102



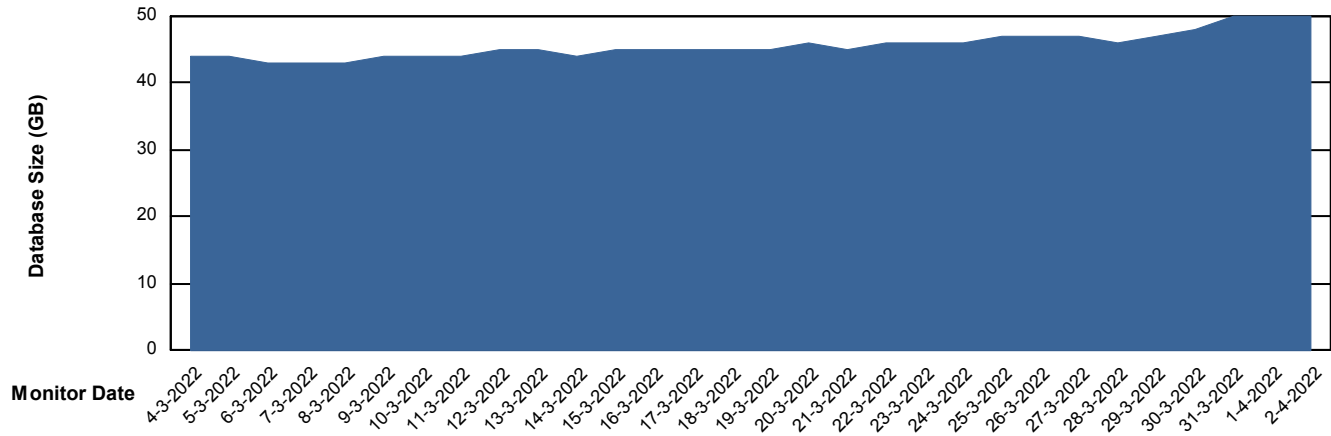
DATABASE SIZE JSG\_PRD\_PICARD\_DB

### Database growth over last month



DATABASE SIZE JSG\_PRD\_SAREK\_DB

### Database growth over last month



# Weekly SLA Customer Report

Customer JSG\_Production  
 Database ID 102



Database Tablespace JSG\_PRD\_PICARD\_DB

Date	Tablespace Name	Filesize (Gb)	Usedsize (Gb)	Percentage free
2-4-2022	ABSDATA	95	79	17
	INDX	40	5	89
1-4-2022	ABSDATA	95	79	17
	INDX	40	4	89
31-3-2022	ABSDATA	89	78	12
	INDX	40	4	89
30-3-2022	ABSDATA	89	78	12
	INDX	40	4	89
29-3-2022	ABSDATA	89	77	13
	INDX	40	4	89
28-3-2022	ABSDATA	89	77	14
	INDX	40	4	89
27-3-2022	ABSDATA	89	76	15
	INDX	40	4	89

# Weekly SLA Customer Report

Customer JSG\_Production  
 Database ID 102



Database Tablespace JSG\_PRD\_SAREK\_DB

Date	Tablespace Name	Filesize (Gb)	Usedsize (Gb)	Percentage free
2-4-2022	ABSDATA	40	30	24
	INDX	40	18	56
1-4-2022	ABSDATA	40	30	24
	INDX	40	18	56
31-3-2022	ABSDATA	40	30	24
	INDX	40	18	56
30-3-2022	ABSDATA	40	29	28
	INDX	40	17	57
29-3-2022	ABSDATA	40	27	31
	INDX	40	17	57
28-3-2022	ABSDATA	40	27	32
	INDX	40	17	58
27-3-2022	ABSDATA	40	28	30
	INDX	40	17	58

BI Status and last ETL error for JSG\_PRD\_SAREK\_DB

	ma 28/3/2022	di 29/3/2022	wo 30/3/2022	do 31/3/2022	vr 1/4/2022	za 2/4/2022
<b>ABS DataWarehouse ETL Health</b>	OK	OK	OK	OK	OK	OK
<b>ABS DWHStaging ETL Health</b>	OK	OK	OK	OK	OK	OK

# Weekly SLA Customer Report

Customer JSG\_Production  
Database ID 102



BI last ETL error for	JSG_PRD_SAREK_DB
ma, 28-03-2022	None
wo, 30-03-2022	None
vr, 1-04-2022	None
wo, 30-03-2022	None
za, 2-04-2022	None
zo, 27-03-2022	None
vr, 1-04-2022	None
di, 29-03-2022	None
za, 2-04-2022	None
di, 29-03-2022	None
zo, 27-03-2022	None
ma, 28-03-2022	None
do, 31-03-2022	None
do, 31-03-2022	None

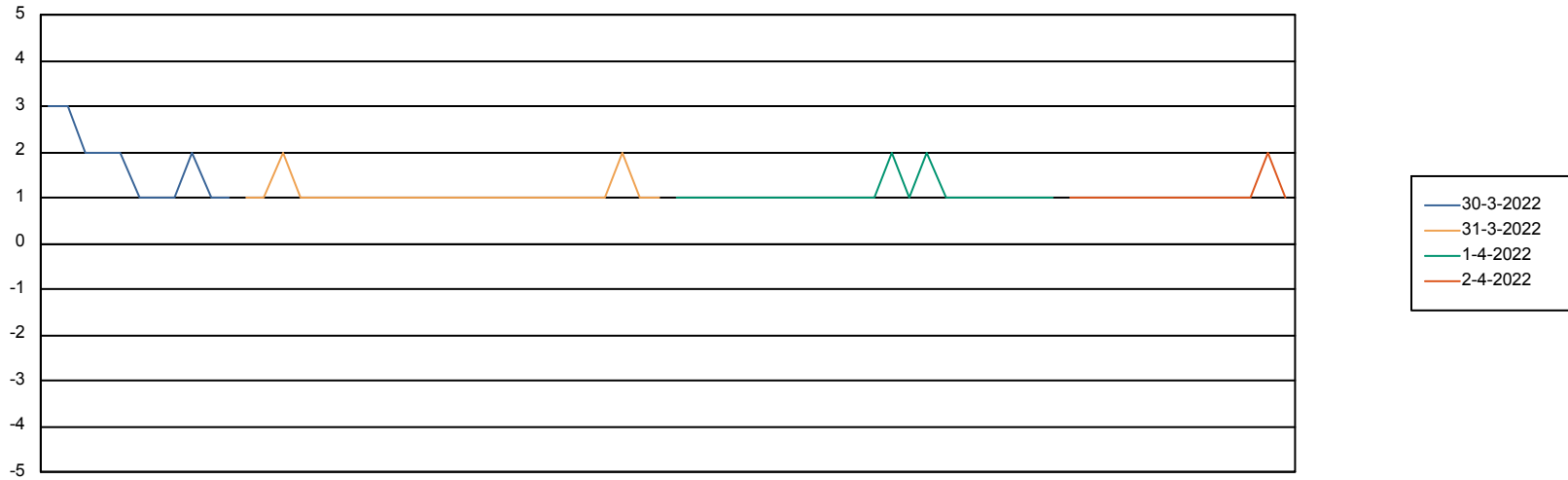
# Weekly SLA Customer Report

Customer JSG\_Production  
Database ID 102



Standby Database Health JSG\_Production

## Recovery lag for last 7 days



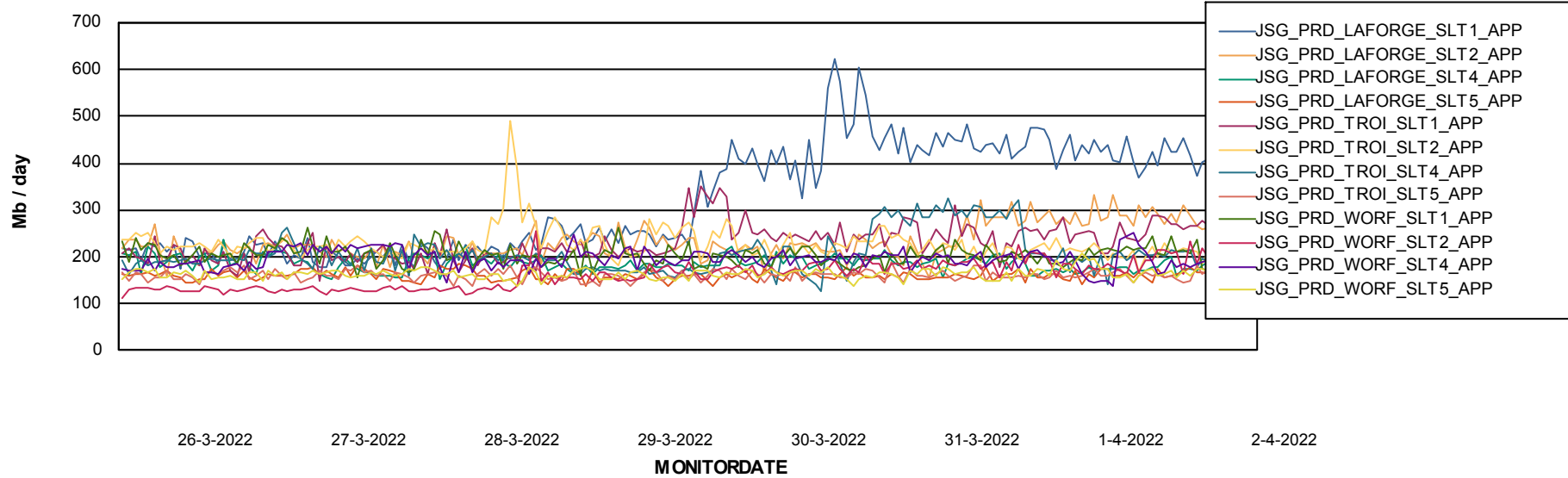
# Weekly SLA Customer Report

Customer JSG\_Production  
Database ID 102

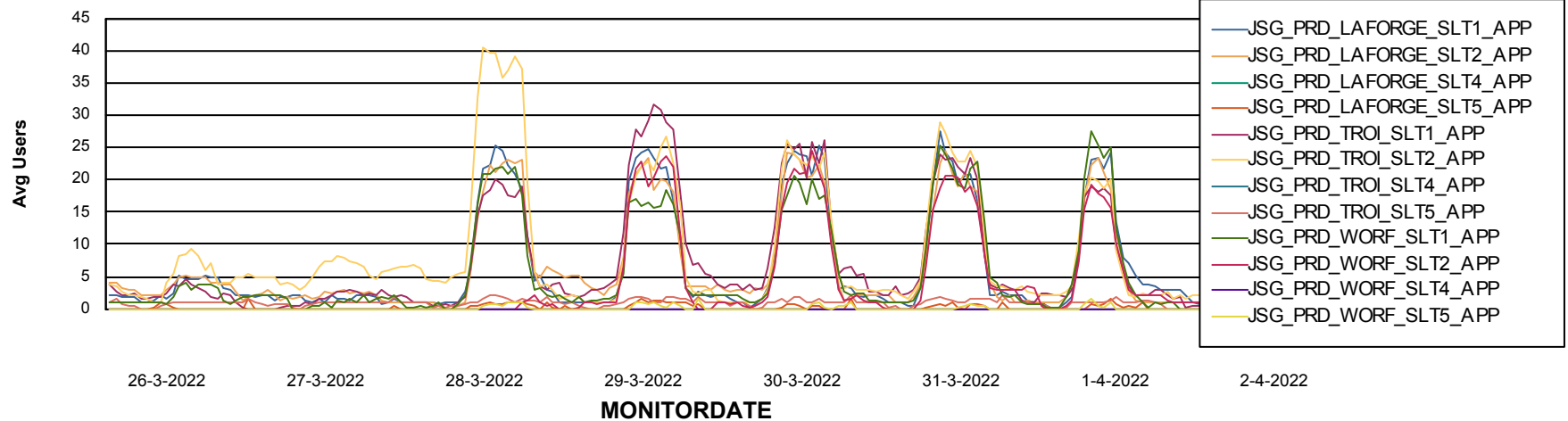


## ABSSolute Application Server Services

### Avg memory used per ABS Server Service



### Avg users per day per ABS server



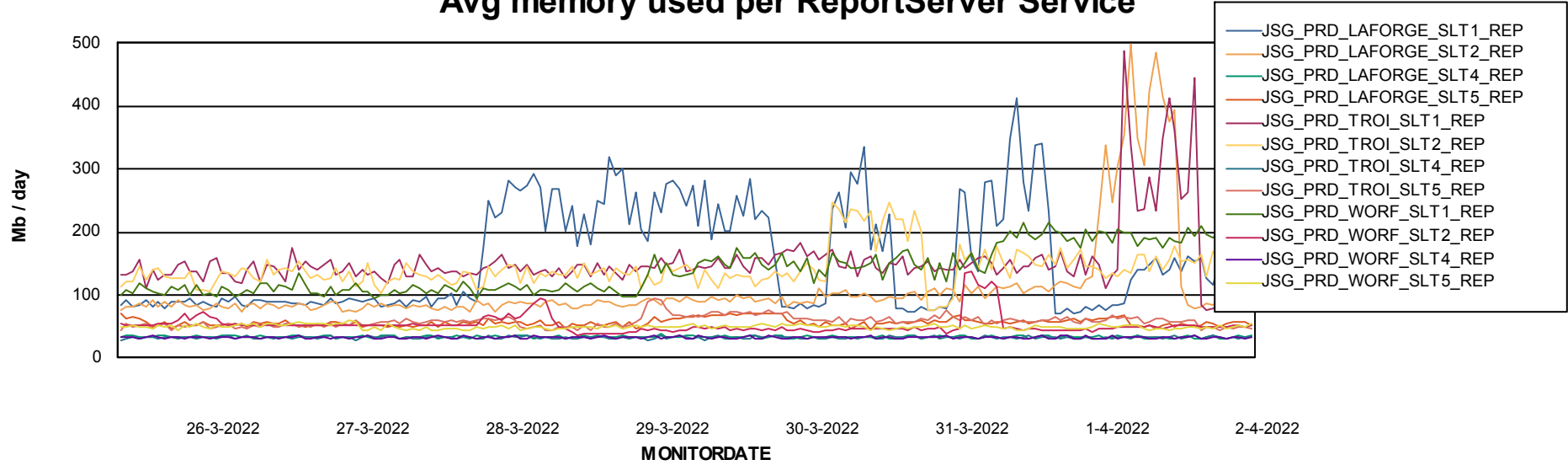
# Weekly SLA Customer Report

Customer JSG\_Production  
Database ID 102



## ABSSolute Application ReportServer Services

### Avg memory used per ReportServer Service



# Weekly SLA Customer Report

Customer JSG\_Production  
Database ID 102



## ABSSolute Web Component Services

### Avg memory used per ABS Web component

