

# Weekly SLA Customer Report

Customer NIX\_Production  
Database ID 51



## Harddisk Usage NIX\_PRD\_ABSAPP01

	Free disk space on C: (%)	Total disk space on C: (Gb)	Used disk space on C: (Gb)	Free disk space on E: (%)	Total disk space on E: (Gb)	Used disk space on E: (Gb)
12-2-2022	73	207	55	100	98	0
11-2-2022	73	207	55	100	98	0
10-2-2022	73	207	55	100	98	0
9-2-2022	73	207	55	100	98	0
8-2-2022	73	207	55	100	98	0
7-2-2022	73	207	55	100	98	0
6-2-2022	73	207	55	100	98	0

## Harddisk Usage NIX\_PRD\_ABSAPP04

	Free disk space on C: (%)	Total disk space on C: (Gb)	Used disk space on C: (Gb)
12-2-2022	36	127	81
11-2-2022	36	127	81
10-2-2022	36	127	80
9-2-2022	37	127	80
8-2-2022	38	127	79
7-2-2022	38	127	79
6-2-2022	38	127	78

# Weekly SLA Customer Report

Customer NIX\_Production  
Database ID 51



## Harddisk Usage NIX\_PRD\_ABSWEB02

	Free disk space on C: (%)	Total disk space on C: (Gb)	Used disk space on C: (Gb)
12-2-2022	89	300	33
11-2-2022	89	300	33
10-2-2022	89	300	33
9-2-2022	89	300	33
8-2-2022	89	300	33
7-2-2022	89	300	33
6-2-2022	89	300	33

## Harddisk Usage NIX\_PRD\_BISRV

	Free disk space on C: (%)	Total disk space on C: (Gb)	Used disk space on C: (Gb)
12-2-2022	41	836	497
11-2-2022	41	836	493
10-2-2022	41	836	493
9-2-2022	41	836	493
8-2-2022	41	836	493
7-2-2022	41	836	493
6-2-2022	41	836	493

# Weekly SLA Customer Report

Customer NIX\_Production  
 Database ID 51



Harddisk Usage NIX\_PRD\_ORCDB1

	Free disk space on C: (%)	Total disk space on C: (Gb)	Used disk space on C: (Gb)	Free disk space on D: (%)	Total disk space on D: (Gb)	Used disk space on D: (Gb)	Free disk space on E: (%)	Total disk space on E: (Gb)	Used disk space on E: (Gb)	Free disk space on F: (%)
12-2-2022	45	554	306	51	586	284	59	605	250	49
11-2-2022	45	554	307	51	586	284	59	605	249	49
10-2-2022	45	554	307	51	586	284	59	605	249	49
9-2-2022	45	554	307	51	586	284	59	605	249	49
8-2-2022	45	554	307	51	586	284	59	605	249	49
7-2-2022	45	554	307	51	586	284	59	605	249	50
6-2-2022	45	554	307	51	586	284	59	605	249	49

Harddisk Usage NIX\_PRD\_ORCDB2

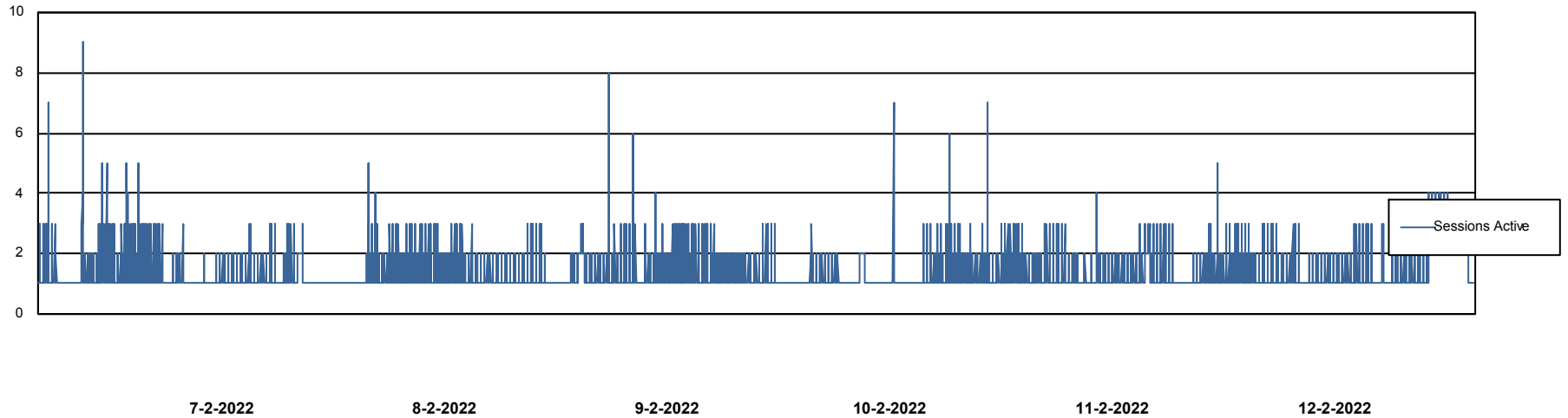
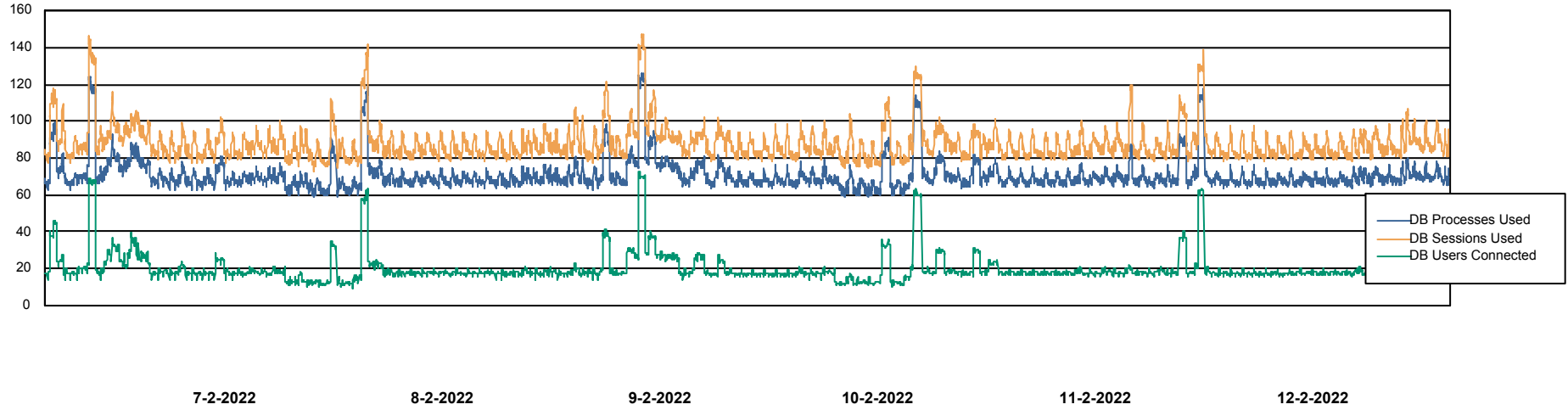
	Free disk space on C: (%)	Total disk space on C: (Gb)	Used disk space on C: (Gb)	Free disk space on D: (%)	Total disk space on D: (Gb)	Used disk space on D: (Gb)	Free disk space on E: (%)	Total disk space on E: (Gb)	Used disk space on E: (Gb)	Free disk space on F: (%)
12-2-2022	90	574	60	48	488	255	64	684	249	88
11-2-2022	90	574	60	48	488	255	64	684	248	88
10-2-2022	90	574	60	48	488	255	64	684	249	88
9-2-2022	90	574	60	48	488	255	64	684	248	88
8-2-2022	90	574	60	48	488	255	64	684	248	88
7-2-2022	90	574	60	48	488	255	64	684	248	89
6-2-2022	90	574	60	48	488	255	64	684	248	88

# Weekly SLA Customer Report

Customer NIX\_Production  
Database ID 51



## Database Performance NIXDB\_BI

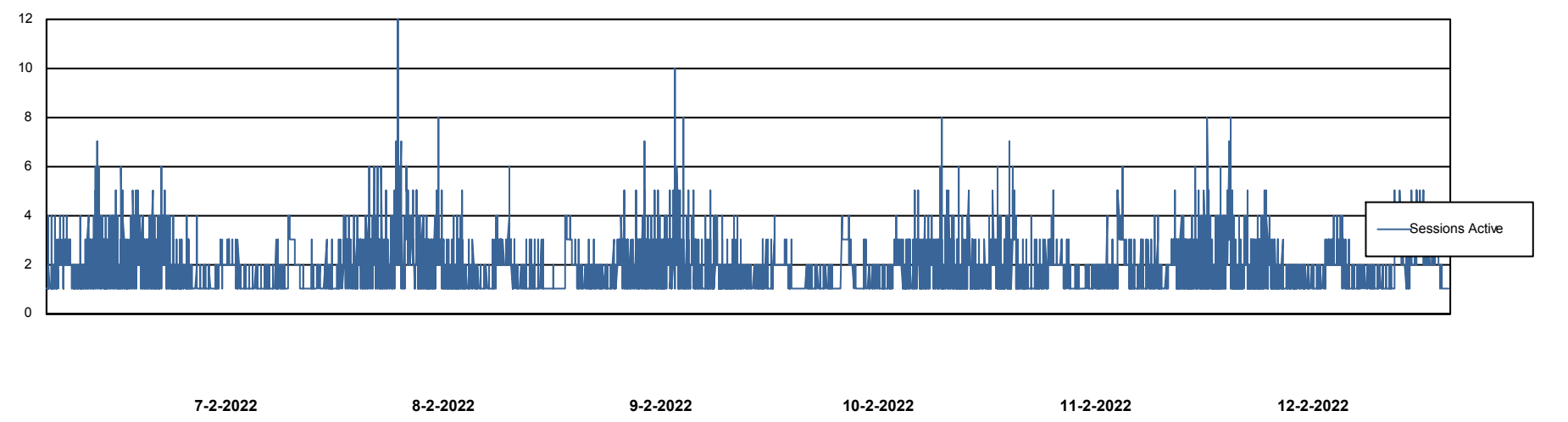
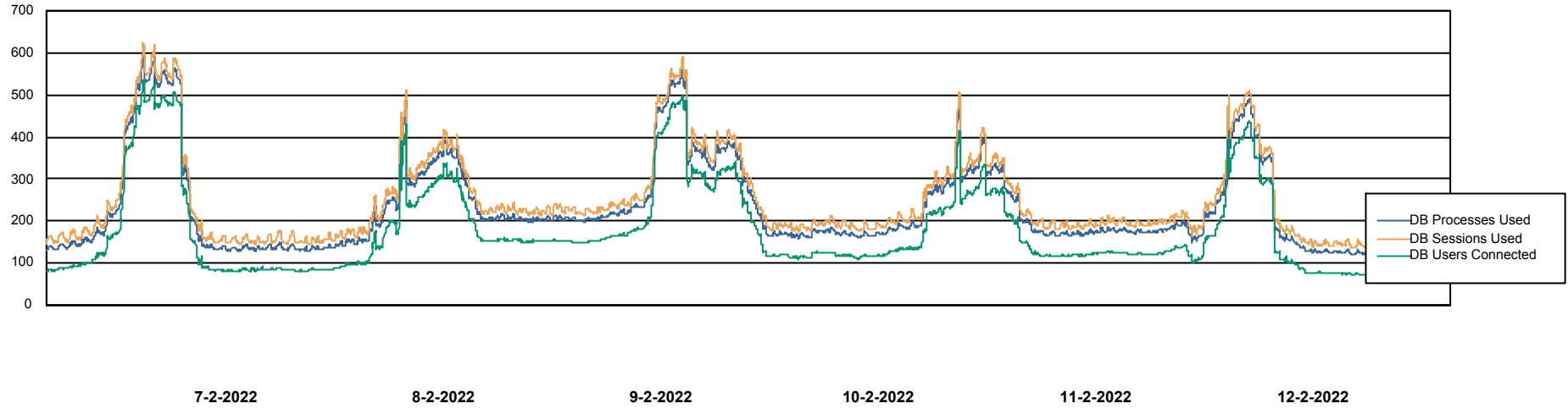


# Weekly SLA Customer Report

Customer NIX\_Production  
Database ID 51



## Database Performance NIXDB\_Production



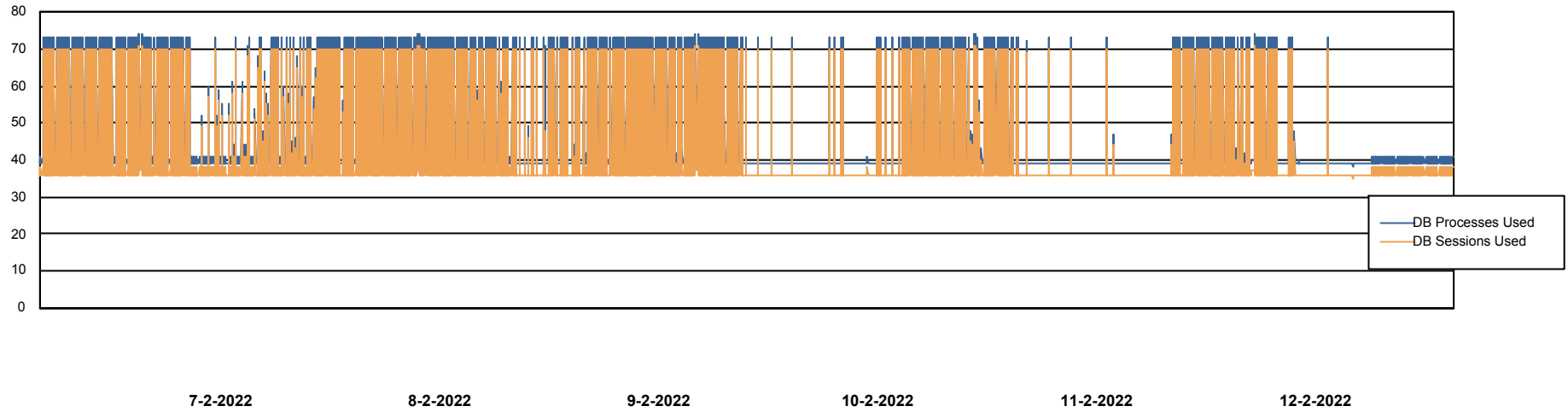
# Weekly SLA Customer Report

Customer NIX\_Production  
Database ID 51



Database Performance NIXDB\_Standby

DB Processes Max 300



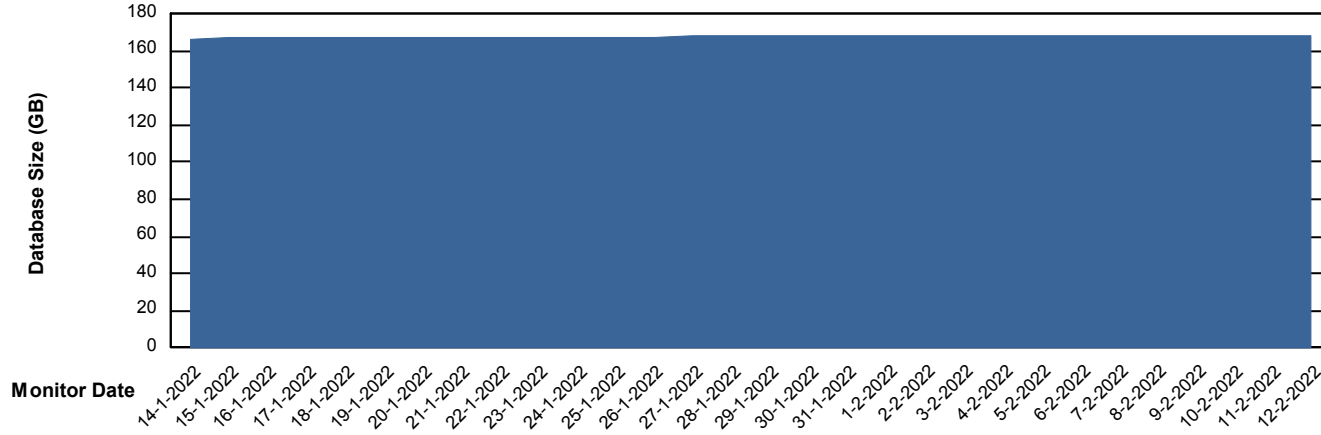
# Weekly SLA Customer Report

Customer NIX\_Production  
Database ID 51



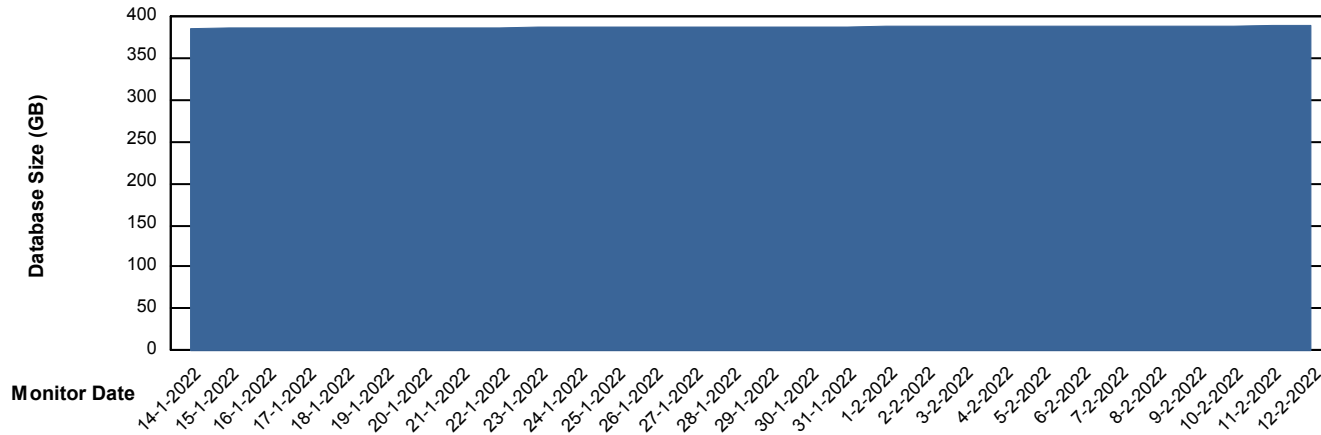
DATABASE SIZE NIXDB\_BI

### Database growth over last month



DATABASE SIZE NIXDB\_Production

### Database growth over last month



# Weekly SLA Customer Report

Customer NIX\_Production  
Database ID 51



Database Tablespace NIXDB\_BI

Date	Tablespace Name	Filesize (Gb)	Usedsize (Gb)	Percentage free
12-2-2022	ABSDATA	85	70	18
	INDX	117	97	17
11-2-2022	ABSDATA	85	70	18
	INDX	117	97	17
10-2-2022	ABSDATA	85	70	18
	INDX	117	97	17
9-2-2022	ABSDATA	85	69	18
	INDX	117	97	17
8-2-2022	ABSDATA	85	69	18
	INDX	117	97	17
7-2-2022	ABSDATA	85	69	18
	INDX	117	97	17
6-2-2022	ABSDATA	85	69	18
	INDX	117	97	17

# Weekly SLA Customer Report

Customer NIX\_Production  
Database ID 51



Database Tablespace NIXDB\_Production

Date	Tablespace Name	Filesize (Gb)	Usedsize (Gb)	Percentage free
12-2-2022	ABSDATA	202	169	17
	INDX	248	200	19
11-2-2022	ABSDATA	202	169	17
	INDX	248	200	20
10-2-2022	ABSDATA	202	169	17
	INDX	248	200	20
9-2-2022	ABSDATA	202	169	17
	INDX	248	200	20
8-2-2022	ABSDATA	202	169	17
	INDX	248	200	20
7-2-2022	ABSDATA	202	168	17
	INDX	248	199	20
6-2-2022	ABSDATA	202	168	17
	INDX	248	199	20

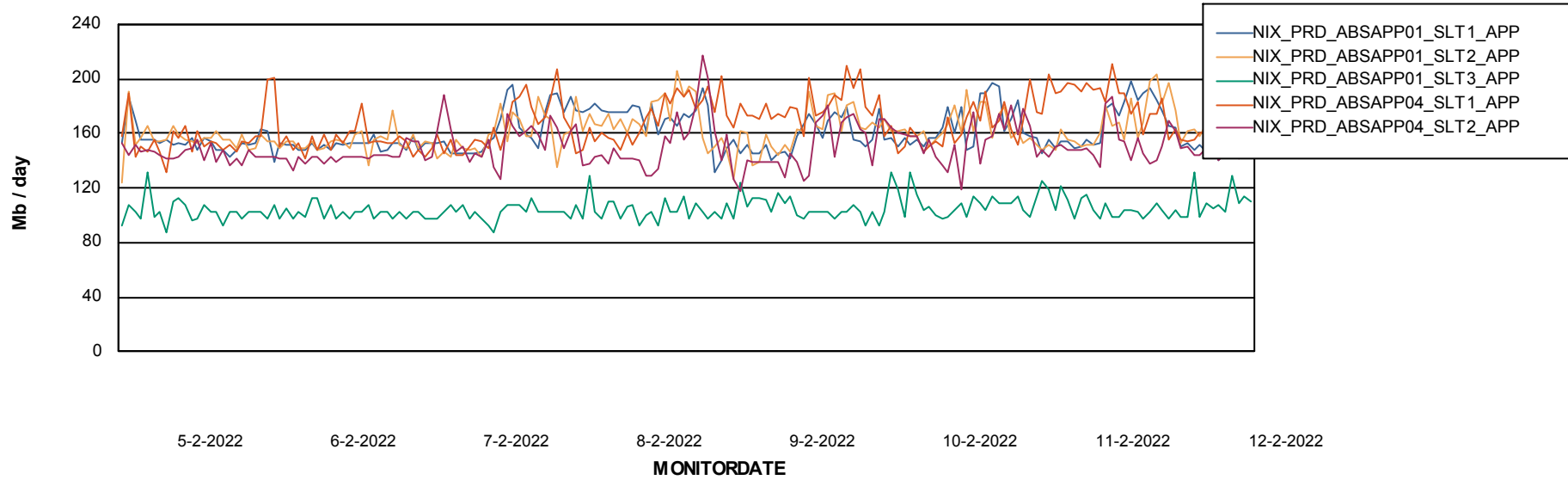
# Weekly SLA Customer Report

Customer NIX\_Production  
Database ID 51

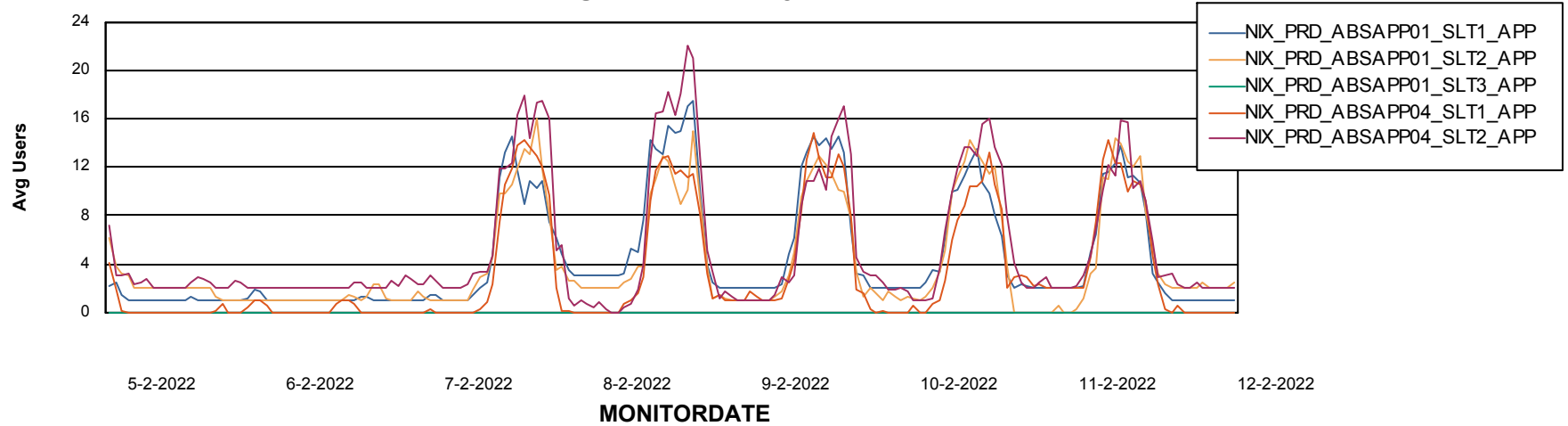


## ABSSolute Application Server Services

### Avg memory used per ABS Server Service



### Avg users per day per ABS server



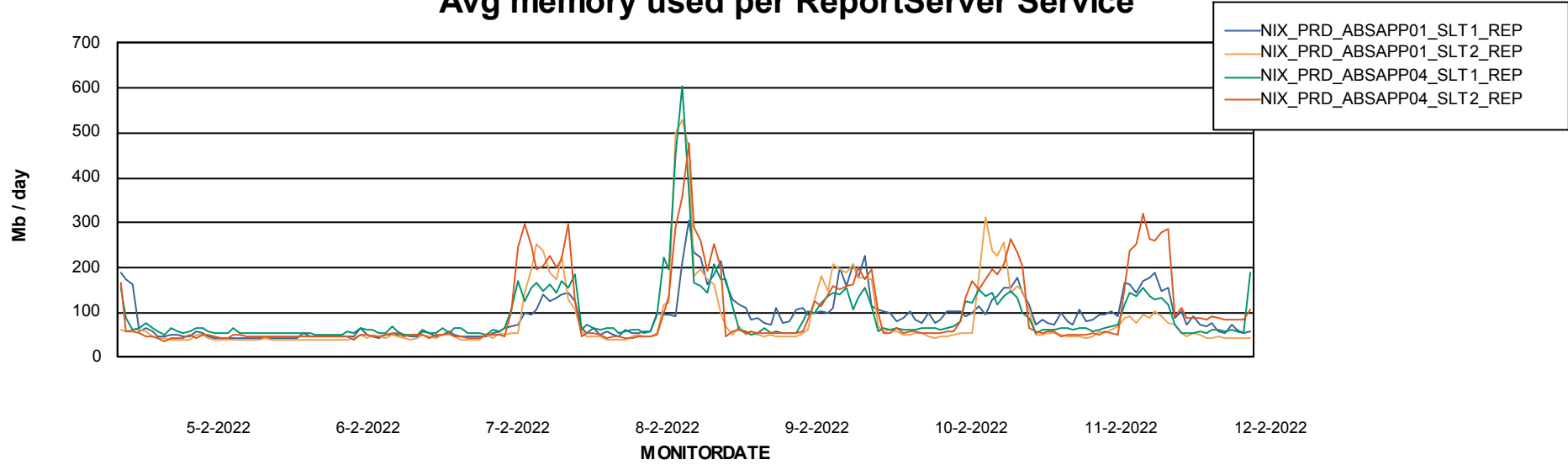
# Weekly SLA Customer Report

Customer NIX\_Production  
Database ID 51



## ABSSolute Application ReportServer Services

### Avg memory used per ReportServer Service



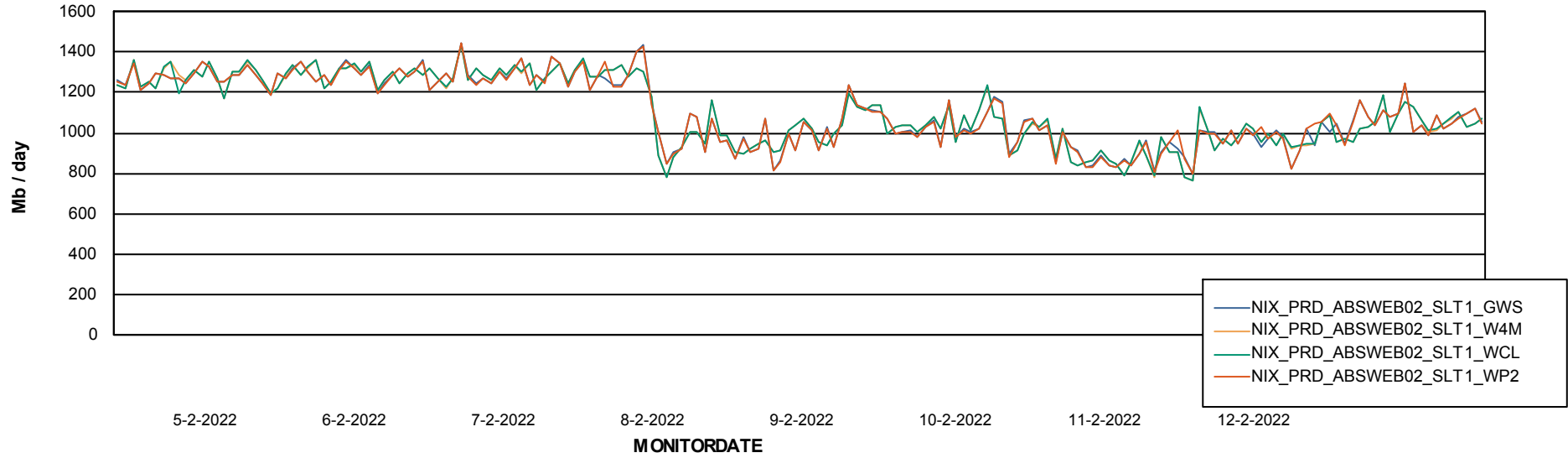
# Weekly SLA Customer Report

Customer NIX\_Production  
Database ID 51



## ABSSolute Web Component Services

### Avg memory used per ABS Web component



# Weekly SLA Customer Report

Customer NIX\_Production  
Database ID 51



## Disaster per ABS component

