

# Weekly SLA Customer Report

Customer JSG\_Production  
Database ID 102



## Harddisk Usage JSG\_PRD\_CRUSHER

	Free disk space on C: (%)	Total disk space on C: (Gb)	Used disk space on C: (Gb)
15-1-2022	38	79	50
14-1-2022	37	79	50
13-1-2022	32	79	54
12-1-2022	34	79	53
11-1-2022	35	79	51
10-1-2022	36	79	51
9-1-2022	36	79	51

## Harddisk Usage JSG\_PRD\_CYPHER

	Free disk space on C: (%)	Total disk space on C: (Gb)	Used disk space on C: (Gb)
15-1-2022	44	79	44
14-1-2022	42	79	46
13-1-2022	42	79	46
12-1-2022	44	79	44
11-1-2022	47	79	42
10-1-2022	47	79	42
9-1-2022	49	79	41

# Weekly SLA Customer Report

Customer JSG\_Production  
Database ID 102



## Harddisk Usage JSG\_PRD\_GUINAN

	Free disk space on C: (%)	Total disk space on C: (Gb)	Used disk space on C: (Gb)
15-1-2022	57	79	35
14-1-2022	56	79	35
13-1-2022	47	79	42
12-1-2022	51	79	39
11-1-2022	52	79	38
10-1-2022	53	79	38
9-1-2022	53	79	38

## Harddisk Usage JSG\_PRD\_LAFORGE

	Free disk space on C: (%)	Total disk space on C: (Gb)	Used disk space on C: (Gb)
15-1-2022	28	149	107
14-1-2022	28	149	107
13-1-2022	29	149	107
12-1-2022	29	149	107
11-1-2022	29	149	107
10-1-2022	29	149	107
9-1-2022	29	149	106

# Weekly SLA Customer Report

Customer JSG\_Production  
Database ID 102



## Harddisk Usage JSG\_PRD\_PICARD

	Free disk space on C: (%)	Total disk space on C: (Gb)	Used disk space on C: (Gb)	Free disk space on D: (%)	Total disk space on D: (Gb)	Used disk space on D: (Gb)
15-1-2022	52	149	71	80	1,024	206
14-1-2022	52	149	71	80	1,024	206
13-1-2022	52	149	71	80	1,024	206
12-1-2022	52	149	71	80	1,024	206
11-1-2022	52	149	71	80	1,024	206
10-1-2022	52	149	71	80	1,024	206
9-1-2022	53	149	71	80	1,024	203

## Harddisk Usage JSG\_PRD\_RIKER

	Free disk space on C: (%)	Total disk space on C: (Gb)	Used disk space on C: (Gb)	Free disk space on D: (%)	Total disk space on D: (Gb)	Used disk space on D: (Gb)
15-1-2022	71	199	58	54	1,024	469
14-1-2022	71	199	58	54	1,024	471
13-1-2022	71	199	58	54	1,024	473
12-1-2022	71	199	58	54	1,024	474
11-1-2022	71	199	58	54	1,024	471
10-1-2022	71	199	57	54	1,024	468
9-1-2022	71	199	57	55	1,024	466

# Weekly SLA Customer Report

Customer JSG\_Production  
Database ID 102



## Harddisk Usage JSG\_PRD\_TEBOK

	Free disk space on C: (%)	Total disk space on C: (Gb)	Used disk space on C: (Gb)
15-1-2022	62	79	30
14-1-2022	61	79	31
13-1-2022	58	79	33
12-1-2022	60	79	31
11-1-2022	63	79	30
10-1-2022	63	79	30
9-1-2022	63	79	30

## Harddisk Usage JSG\_PRD\_TOMALAK

	Free disk space on C: (%)	Total disk space on C: (Gb)	Used disk space on C: (Gb)
15-1-2022	51	79	39
14-1-2022	51	79	39
13-1-2022	49	79	41
12-1-2022	52	79	38
11-1-2022	54	79	36
10-1-2022	54	79	36
9-1-2022	54	79	36

# Weekly SLA Customer Report

Customer JSG\_Production  
 Database ID 102



Harddisk Usage JSG\_PRD\_TROI

	Free disk space on C: (%)	Total disk space on C: (Gb)	Used disk space on C: (Gb)
15-1-2022	55	149	67
14-1-2022	55	149	67
13-1-2022	55	149	67
12-1-2022	55	149	67
11-1-2022	55	149	67
10-1-2022	55	149	67
9-1-2022	56	149	66

Harddisk Usage JSG\_PRD\_WORF

	Free disk space on C: (%)	Total disk space on C: (Gb)	Used disk space on C: (Gb)
15-1-2022	53	149	71
14-1-2022	53	149	71
13-1-2022	53	149	71
12-1-2022	53	149	71
11-1-2022	53	149	71
10-1-2022	52	149	72
9-1-2022	51	149	72

# Weekly SLA Customer Report

Customer JSG\_Production  
 Database ID 102



Harddisk Usage JSG\_PRD\_YAR

	Free disk space on C: (%)	Total disk space on C: (Gb)	Used disk space on C: (Gb)	Free disk space on D: (%)	Total disk space on D: (Gb)	Used disk space on D: (Gb)
15-1-2022	33	149	100	61	750	290
14-1-2022	33	149	100	62	750	286
13-1-2022	32	149	101	62	750	285
12-1-2022	32	149	101	62	750	283
11-1-2022	31	149	103	64	750	271
10-1-2022	31	149	104	67	750	249
9-1-2022	30	149	104	66	750	256

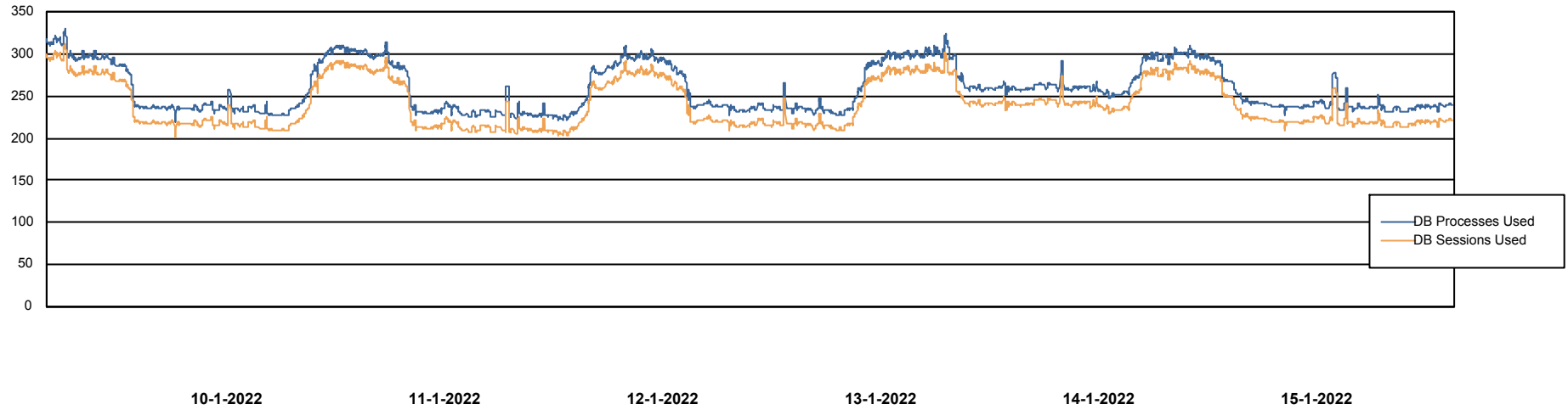
# Weekly SLA Customer Report

Customer JSG\_Production  
Database ID 102



## Database Performance JSG\_PRD\_PICARD\_DB

DB Processes Max 1,000  
DB Processes Max 4  
DB Processes Max 0



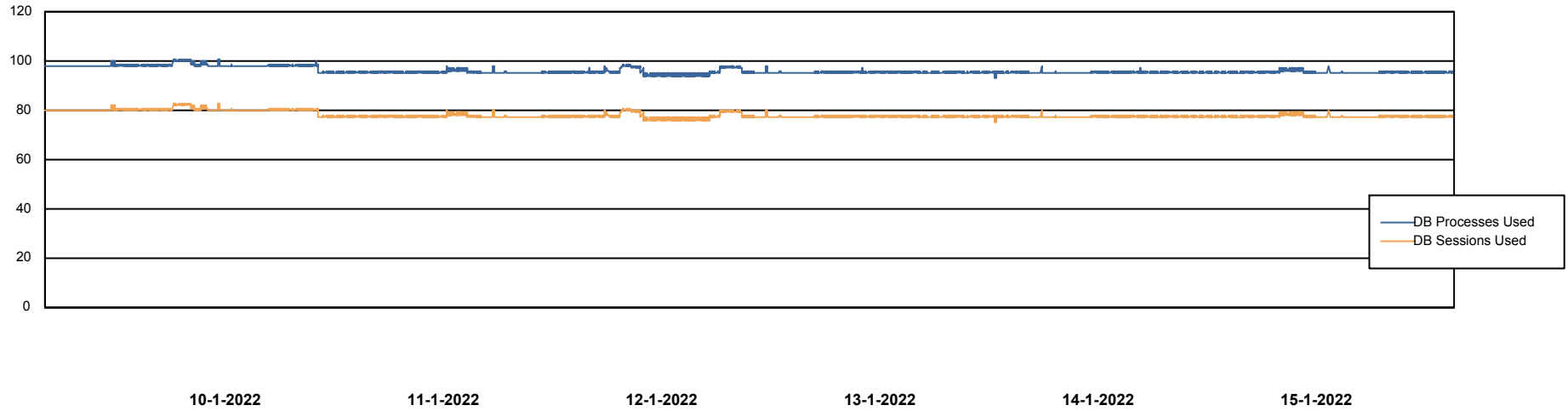
# Weekly SLA Customer Report

Customer JSG\_Production  
Database ID 102



## Database Performance JSG\_PRD\_RIKER\_DB

DB Processes Max 1,000  
DB Processes Max 0  
DB Processes Max 4



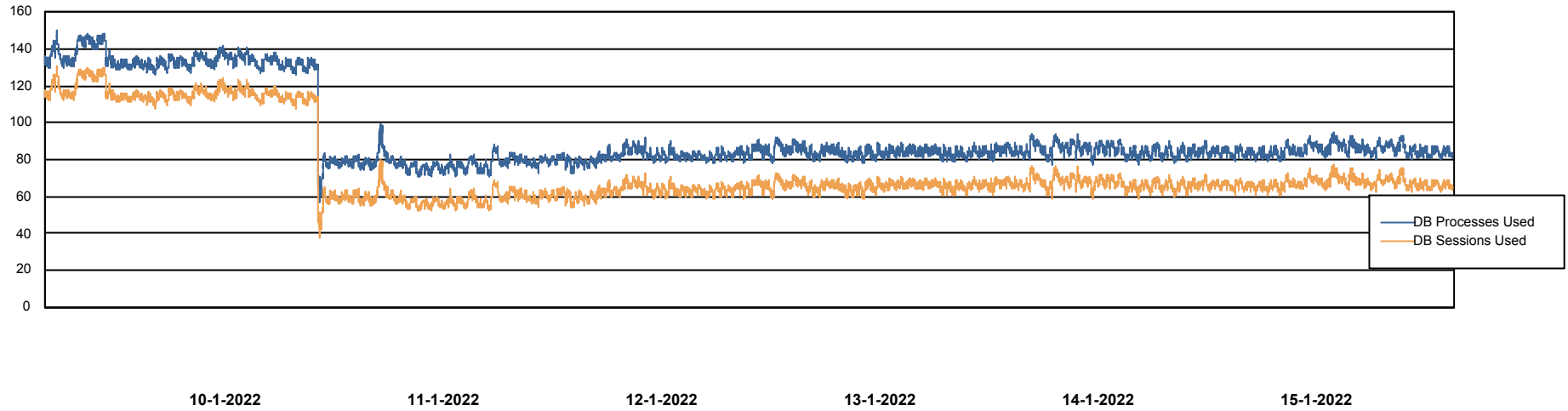
# Weekly SLA Customer Report

Customer JSG\_Production  
Database ID 102



Database Performance JSG\_PRD\_YAR

DB Processes Max 1,000



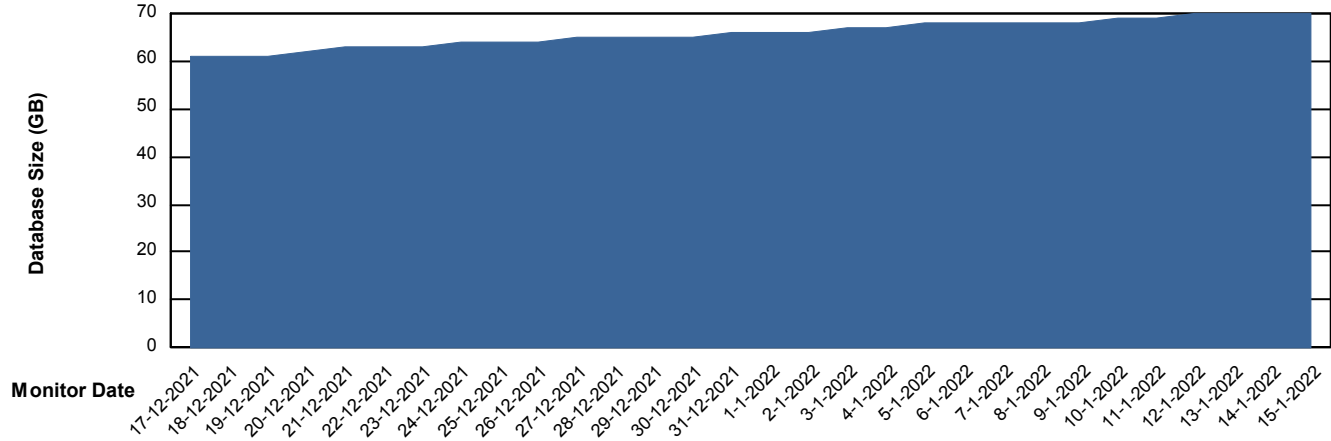
# Weekly SLA Customer Report

Customer JSG\_Production  
Database ID 102



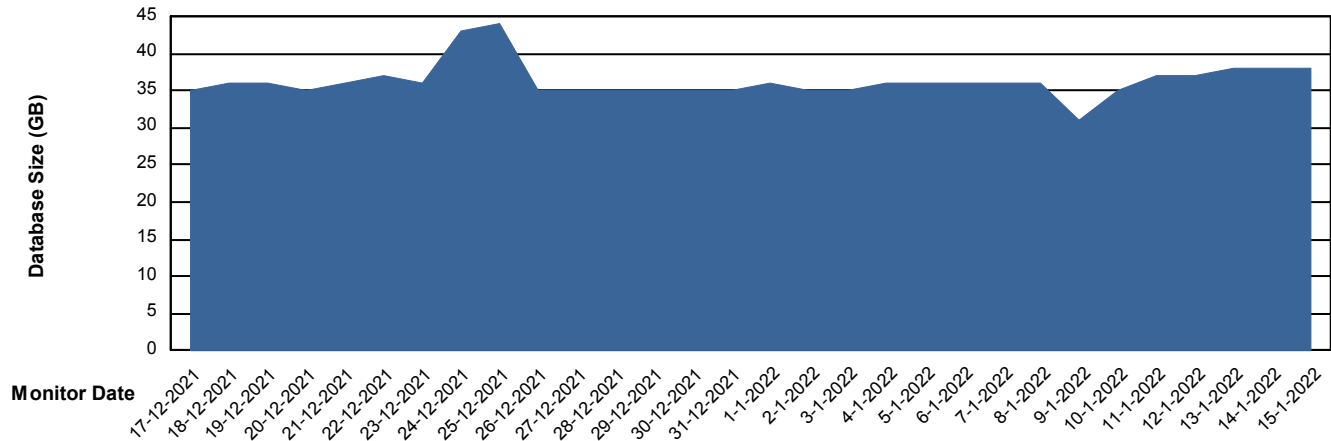
DATABASE SIZE JSG\_PRD\_PICARD\_DB

### Database growth over last month



DATABASE SIZE JSG\_PRD\_YAR

### Database growth over last month



# Weekly SLA Customer Report

Customer JSG\_Production  
 Database ID 102



Database Tablespace JSG\_PRD\_PICARD\_DB

Date	Tablespace Name	Filesize (Gb)	Usedsize (Gb)	Percentage free
15-1-2022	ABSDATA	60	48	20
	INDX	40	3	92
14-1-2022	ABSDATA	60	48	20
	INDX	40	3	92
13-1-2022	ABSDATA	60	48	21
	INDX	40	3	93
12-1-2022	ABSDATA	60	47	21
	INDX	40	3	93
11-1-2022	ABSDATA	60	47	22
	INDX	40	3	93
10-1-2022	ABSDATA	60	47	22
	INDX	40	3	93
9-1-2022	ABSDATA	60	46	24
	INDX	40	3	93

# Weekly SLA Customer Report

Customer JSG\_Production  
 Database ID 102



Database Tablespace JSG\_PRD\_YAR

Date	Tablespace Name	Filesize (Gb)	Usedsize (Gb)	Percentage free
15-1-2022	ABSDATA	80	24	70
	INDX	40	12	71
14-1-2022	ABSDATA	80	24	70
	INDX	40	12	71
13-1-2022	ABSDATA	80	24	70
	INDX	40	12	71
12-1-2022	ABSDATA	80	24	71
	INDX	40	12	71
11-1-2022	ABSDATA	80	23	72
	INDX	40	11	71
10-1-2022	ABSDATA	80	21	73
	INDX	40	11	71
9-1-2022	ABSDATA	80	18	78
	INDX	40	11	72

BI Status and last ETL error for JSG\_PRD\_YAR

	ma 10/1/2022	di 11/1/2022	wo 12/1/2022	do 13/1/2022	vr 14/1/2022	za 15/1/2022
<b>ABS DataWarehouse ETL Health</b>	Not OK	OK	OK	OK	OK	OK
<b>ABS DWHStaging ETL Health</b>	OK	OK	OK	OK	OK	OK

# Weekly SLA Customer Report

Customer JSG\_Production  
Database ID 102



BI last ETL error for	JSG_PRD_YAR
di, 11-01-2022	None
za, 15-01-2022	None
do, 13-01-2022	None
za, 15-01-2022	None
ma, 10-01-2022	None
ma, 10-01-2022	None
wo, 12-01-2022	None
vr, 14-01-2022	None
zo, 9-01-2022	None
di, 11-01-2022	None
ma, 10-01-2022	ORA-03135: connection lost contact
vr, 14-01-2022	None
do, 13-01-2022	None
wo, 12-01-2022	None
zo, 9-01-2022	None

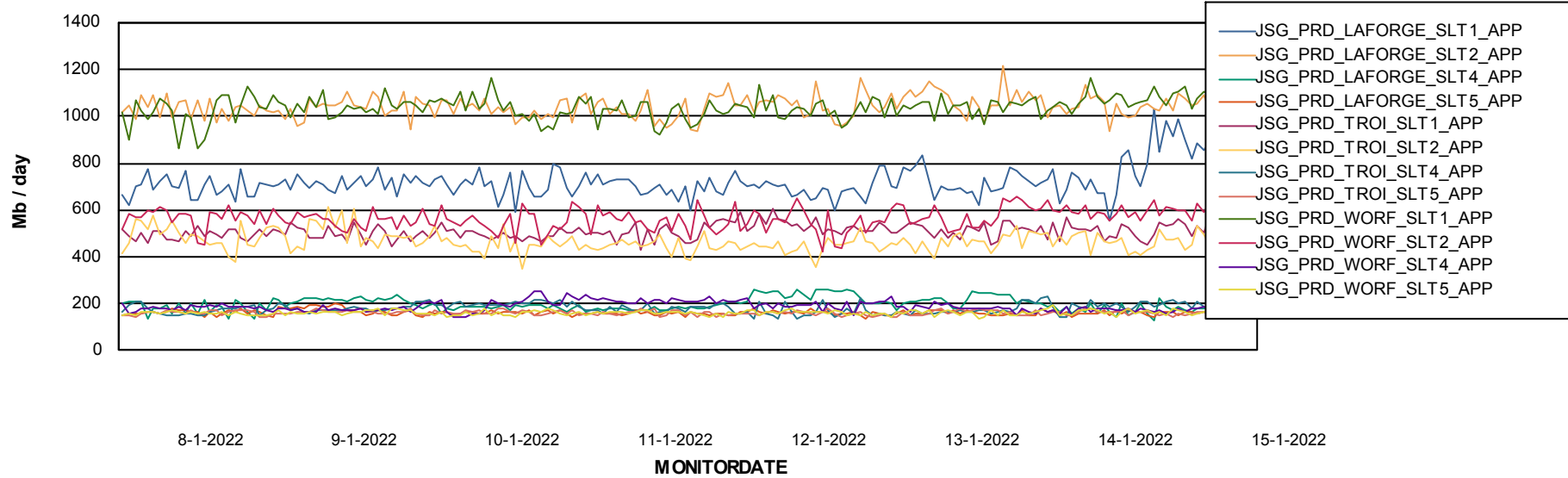
# Weekly SLA Customer Report

Customer JSG\_Production  
Database ID 102

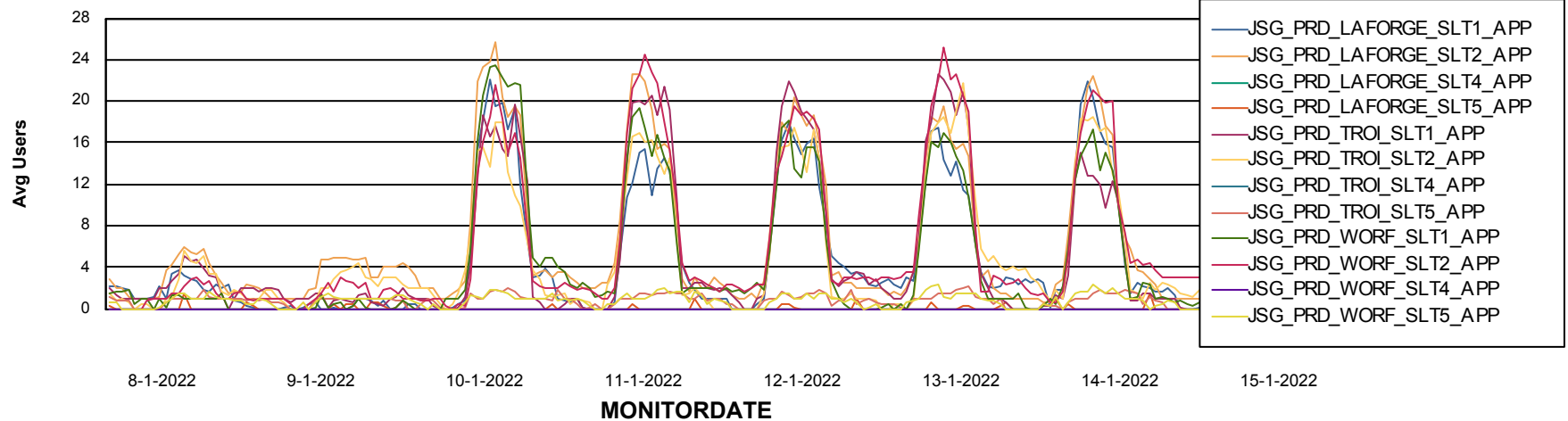


## ABSSolute Application Server Services

### Avg memory used per ABS Server Service



### Avg users per day per ABS server



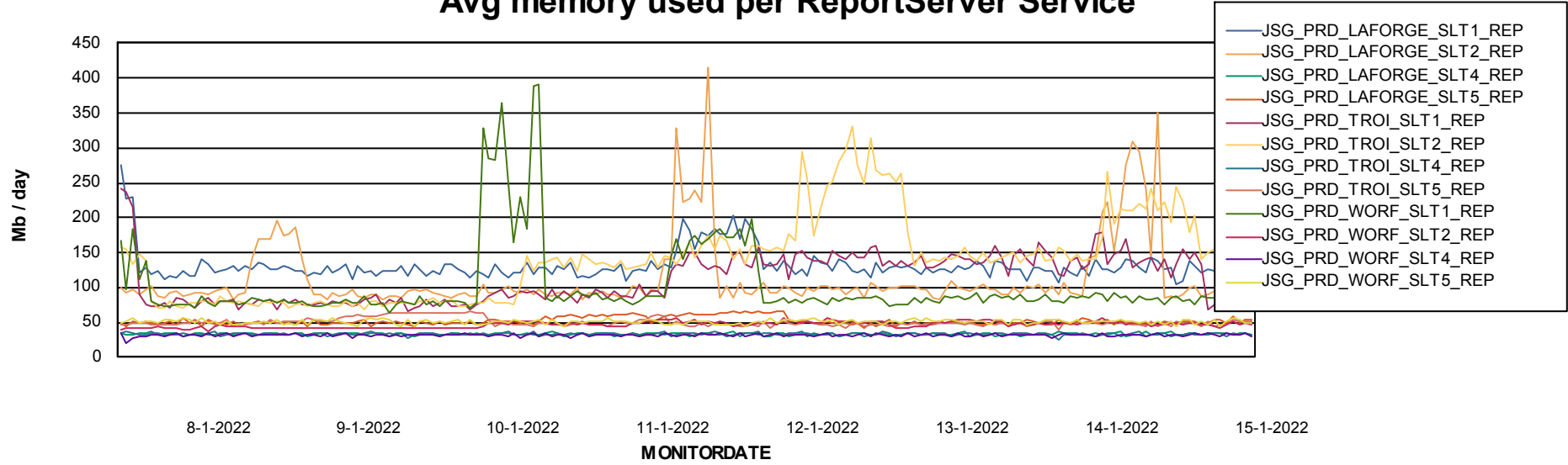
# Weekly SLA Customer Report

Customer JSG\_Production  
Database ID 102



## ABSSolute Application ReportServer Services

### Avg memory used per ReportServer Service



# Weekly SLA Customer Report

Customer JSG\_Production  
Database ID 102



## ABSSolute Web Component Services

### Avg memory used per ABS Web component

