

# Weekly SLA Customer Report

Customer NIX\_Production  
Database ID 51



## Harddisk Usage NIX\_PRD\_ABSAPP01

	Free disk space on C: (%)	Total disk space on C: (Gb)	Used disk space on C: (Gb)	Free disk space on E: (%)	Total disk space on E: (Gb)	Used disk space on E: (Gb)
11-9-2021	81	207	40	100	98	0
10-9-2021	81	207	40	100	98	0
9-9-2021	81	207	40	100	98	0
8-9-2021	81	207	39	100	98	0
7-9-2021	81	207	40	100	98	0
6-9-2021	81	207	40	100	98	0
5-9-2021	81	207	39	100	98	0

## Harddisk Usage NIX\_PRD\_ABSAPP04

	Free disk space on C: (%)	Total disk space on C: (Gb)	Used disk space on C: (Gb)
11-9-2021	47	127	67
10-9-2021	56	127	55
9-9-2021	59	127	52
8-9-2021	59	127	52
7-9-2021	59	127	52
6-9-2021	59	127	52
5-9-2021	59	127	52

# Weekly SLA Customer Report

Customer NIX\_Production  
Database ID 51



## Harddisk Usage NIX\_PRD\_ABSWEB02

	Free disk space on C: (%)	Total disk space on C: (Gb)	Used disk space on C: (Gb)
11-9-2021	89	300	32
10-9-2021	89	300	32
9-9-2021	89	300	31
8-9-2021	90	300	31
7-9-2021	90	300	31
6-9-2021	90	300	31
5-9-2021	90	300	31

## Harddisk Usage NIX\_PRD\_BISRV

	Free disk space on C: (%)	Total disk space on C: (Gb)	Used disk space on C: (Gb)
11-9-2021	44	836	469
10-9-2021	44	836	465
9-9-2021	44	836	468
8-9-2021	45	836	464
7-9-2021	44	836	464
6-9-2021	45	836	464
5-9-2021	44	836	464

# Weekly SLA Customer Report

Customer NIX\_Production  
Database ID 51



## Harddisk Usage NIX\_PRD\_ORCDB1

	Free disk space on C: (%)	Total disk space on C: (Gb)	Used disk space on C: (Gb)	Free disk space on D: (%)	Total disk space on D: (Gb)	Used disk space on D: (Gb)	Free disk space on E: (%)	Total disk space on E: (Gb)	Used disk space on E: (Gb)	Free disk space on F: (%)
11-9-2021	31	554	381	53	586	276	59	605	250	52
10-9-2021	31	554	382	53	586	276	59	605	249	52
9-9-2021	31	554	382	53	586	276	58	605	252	52
8-9-2021	31	554	381	53	586	276	59	605	249	52
7-9-2021	31	554	381	53	586	276	59	605	249	52
6-9-2021	31	554	382	53	586	276	59	605	249	52
5-9-2021	31	554	382	53	586	276	59	605	249	52

## Harddisk Usage NIX\_PRD\_ORCDB2

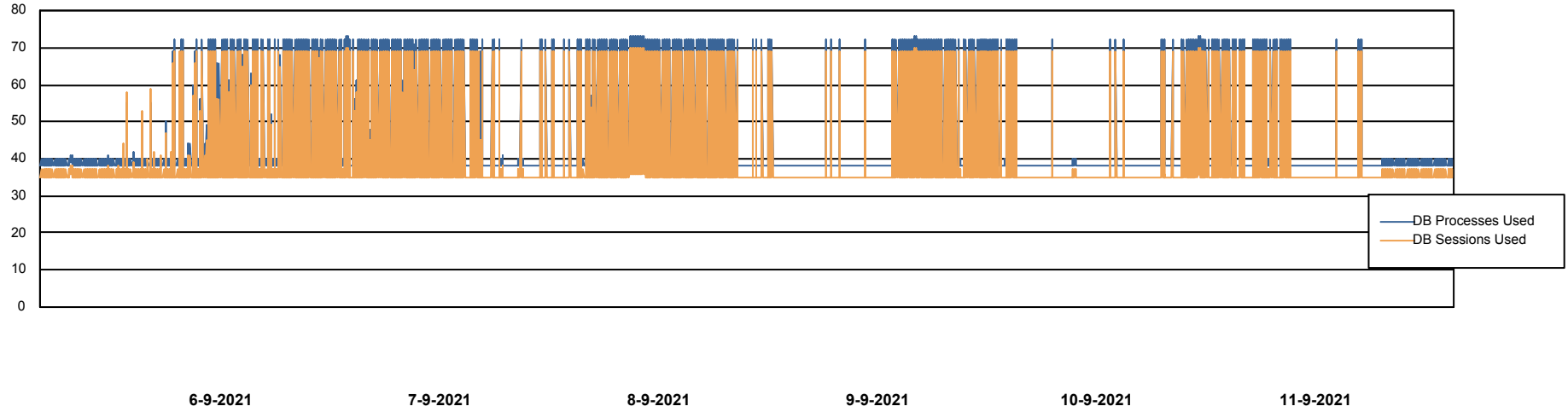
	Free disk space on C: (%)	Total disk space on C: (Gb)	Used disk space on C: (Gb)	Free disk space on D: (%)	Total disk space on D: (Gb)	Used disk space on D: (Gb)	Free disk space on E: (%)	Total disk space on E: (Gb)	Used disk space on E: (Gb)	Free disk space on F: (%)
11-9-2021	90	574	59	50	488	246	64	684	249	89
10-9-2021	90	574	58	50	488	246	64	684	249	89
9-9-2021	89	574	62	49	488	247	63	684	250	88
8-9-2021	90	574	57	50	488	246	64	684	248	89
7-9-2021	90	574	57	50	488	246	64	684	248	89
6-9-2021	90	574	57	50	488	246	64	684	248	89
5-9-2021	90	574	57	50	488	246	64	684	248	89

# Weekly SLA Customer Report

Customer NIX\_Production  
Database ID 51



## Database Performance NIXDB\_Standby



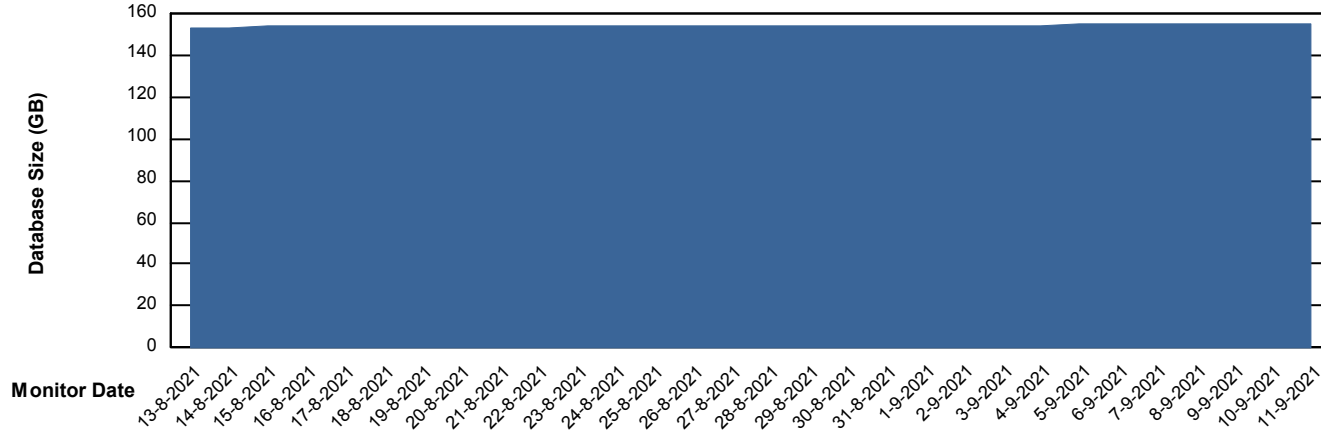
# Weekly SLA Customer Report

Customer NIX\_Production  
Database ID 51



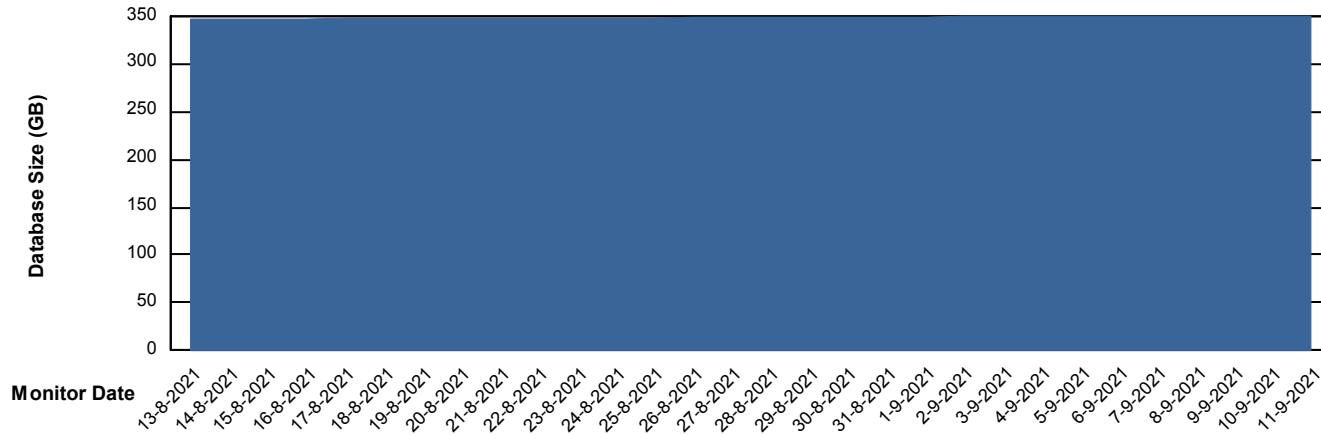
DATABASE SIZE NIXDB\_BI

### Database growth over last month



DATABASE SIZE NIXDB\_Production

### Database growth over last month



# Weekly SLA Customer Report

Customer NIX\_Production  
Database ID 51



Database Tablespace NIXDB\_BI

Date	Tablespace Name	Filesize (Gb)	Usedsize (Gb)	Percentage free
11-9-2021	ABSDATA	84	66	22
	INDX	108	90	17
10-9-2021	ABSDATA	84	66	22
	INDX	108	90	17
9-9-2021	ABSDATA	84	66	22
	INDX	108	90	17
8-9-2021	ABSDATA	84	66	22
	INDX	108	90	17
7-9-2021	ABSDATA	84	65	22
	INDX	108	90	17
6-9-2021	ABSDATA	84	65	22
	INDX	108	90	17
5-9-2021	ABSDATA	84	65	22
	INDX	108	90	17

# Weekly SLA Customer Report

Customer NIX\_Production  
Database ID 51



Database Tablespace NIXDB\_Production

Date	Tablespace Name	Filesize (Gb)	Usedsize (Gb)	Percentage free
11-9-2021	ABSDATA	198	163	18
	INDX	248	187	24
10-9-2021	ABSDATA	198	163	18
	INDX	248	187	24
9-9-2021	ABSDATA	198	163	18
	INDX	248	187	25
8-9-2021	ABSDATA	198	163	18
	INDX	248	187	25
7-9-2021	ABSDATA	198	163	18
	INDX	248	187	25
6-9-2021	ABSDATA	198	163	18
	INDX	248	187	25
5-9-2021	ABSDATA	198	163	18
	INDX	248	187	25

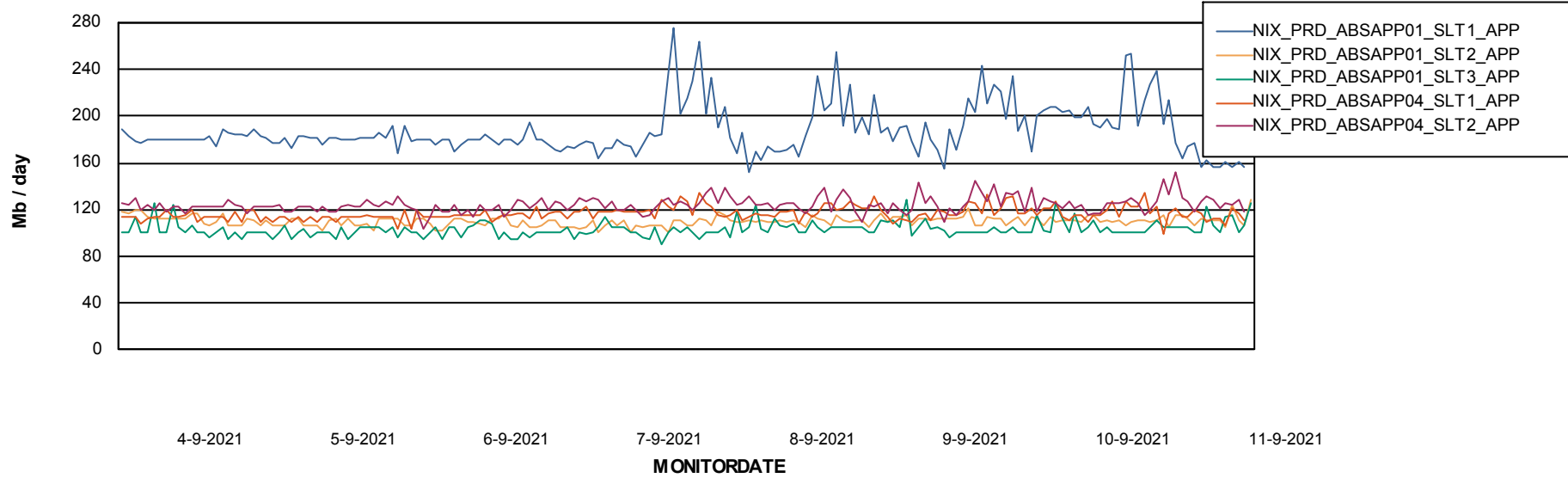
# Weekly SLA Customer Report

Customer NIX\_Production  
Database ID 51

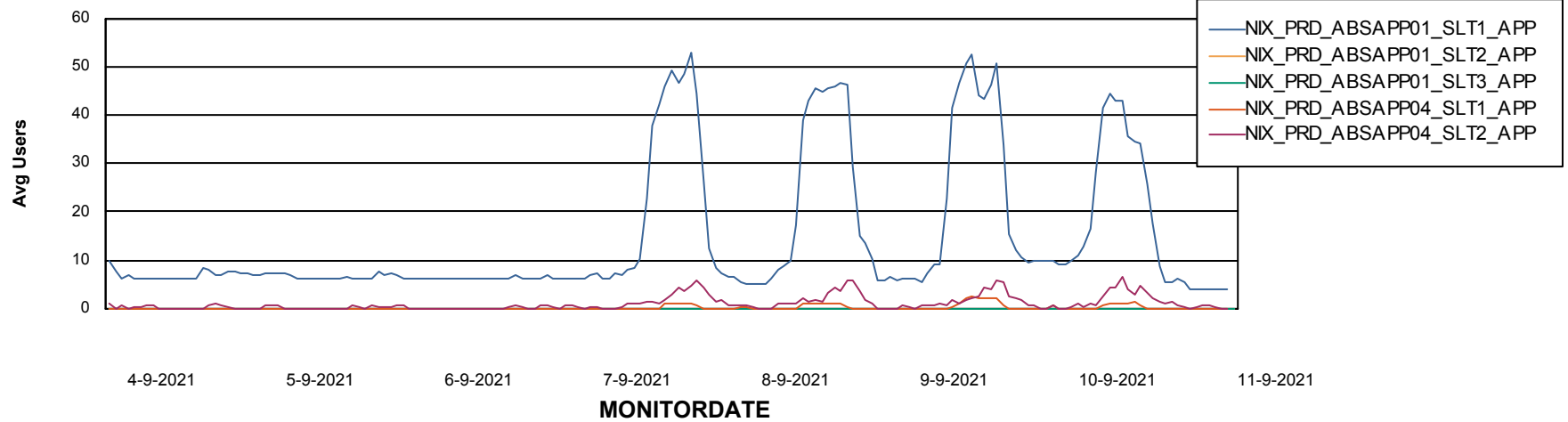


## ABSSolute Application Server Services

### Avg memory used per ABS Server Service



### Avg users per day per ABS server



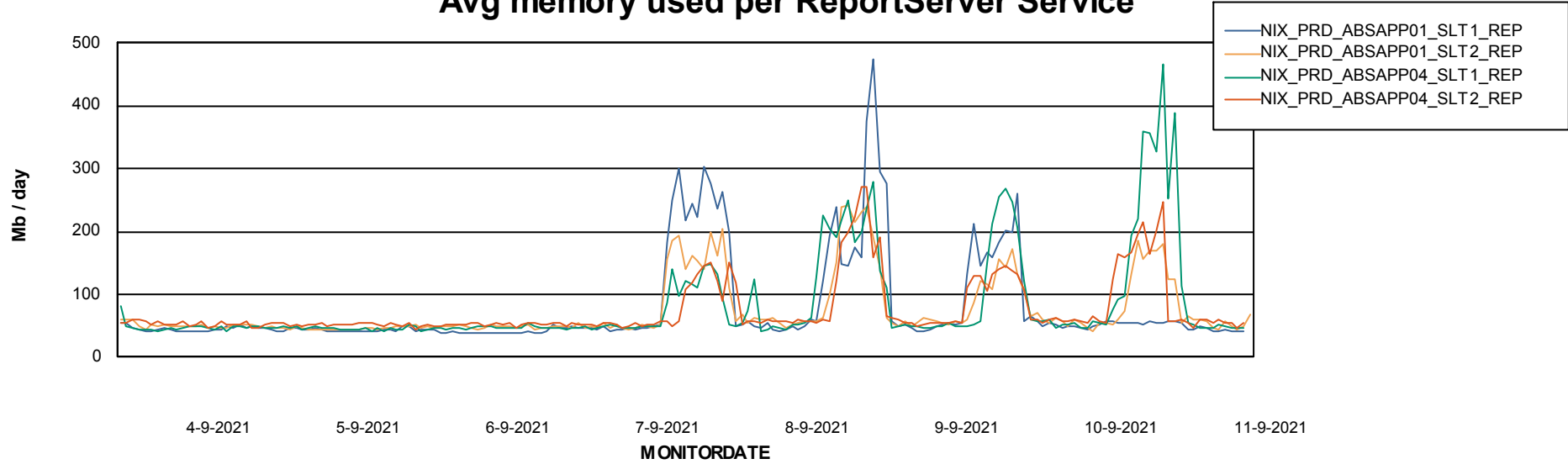
# Weekly SLA Customer Report

Customer NIX\_Production  
Database ID 51



## ABSSolute Application ReportServer Services

### Avg memory used per ReportServer Service



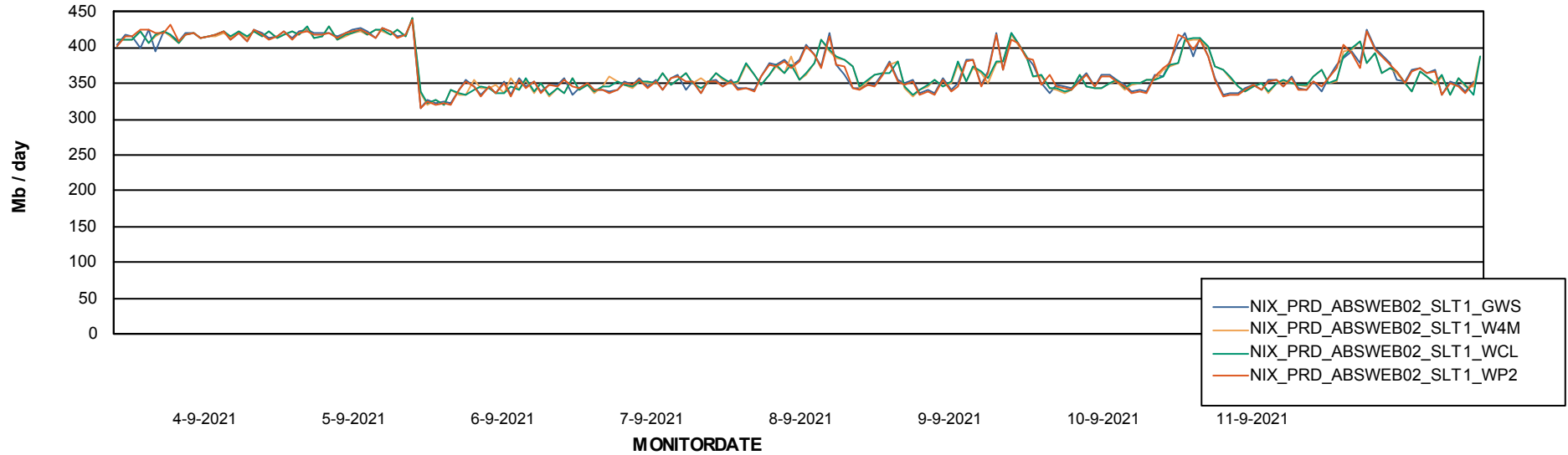
# Weekly SLA Customer Report

Customer NIX\_Production  
Database ID 51



## ABSSolute Web Component Services

### Avg memory used per ABS Web component



# Weekly SLA Customer Report

Customer NIX\_Production  
Database ID 51



## Disaster per ABS component

