

# Weekly SLA Customer Report

Customer CLO Production  
 Database ID 38



Harddisk Usage CLO\_PRD\_CLOBI

	Free disk space on c: (%)	Total disk space on c: (Gb)	Free disk space on d: (%)	Total disk space on d: (Gb)	Free disk space on e: (%)	Total disk space on e: (Gb)
10-Jul-21	67	279	20	447	77	447
09-Jul-21	67	279	20	447	80	447
08-Jul-21	66	279	20	447	80	447
07-Jul-21	66	279	20	447	80	447
06-Jul-21	66	279	20	447	80	447
05-Jul-21	66	279	20	447	79	447
04-Jul-21	66	279	20	447	79	447

Harddisk Usage CLO\_PRD\_ORA\_01

	Free disk space on c: (%)	Total disk space on c: (Gb)	Free disk space on d: (%)	Total disk space on d: (Gb)	Free disk space on f: (%)	Total disk space on f: (Gb)
10-Jul-21	22	279	18	447	58	447
09-Jul-21	22	279	18	447	59	447
08-Jul-21	22	279	18	447	57	447
07-Jul-21	22	279	18	447	58	447
06-Jul-21	22	279	18	447	59	447
05-Jul-21	22	279	18	447	61	447
04-Jul-21	22	279	18	447	60	447

# Weekly SLA Customer Report

Customer CLO Production  
 Database ID 38



Harddisk Usage CLO\_PRD\_ORA\_02

	Free disk space on c: (%)	Total disk space on c: (Gb)	Free disk space on d: (%)	Total disk space on d: (Gb)	Free disk space on f: (%)	Total disk space on f: (Gb)
10-Jul-21	69	279	24	447	32	447
09-Jul-21	69	279	24	447	32	447
08-Jul-21	69	279	24	447	29	447
07-Jul-21	69	279	24	447	31	447
06-Jul-21	69	279	24	447	32	447
05-Jul-21	69	279	24	447	34	447
04-Jul-21	69	279	24	447	33	447

Harddisk Usage CLO\_PRD\_WEB\_02

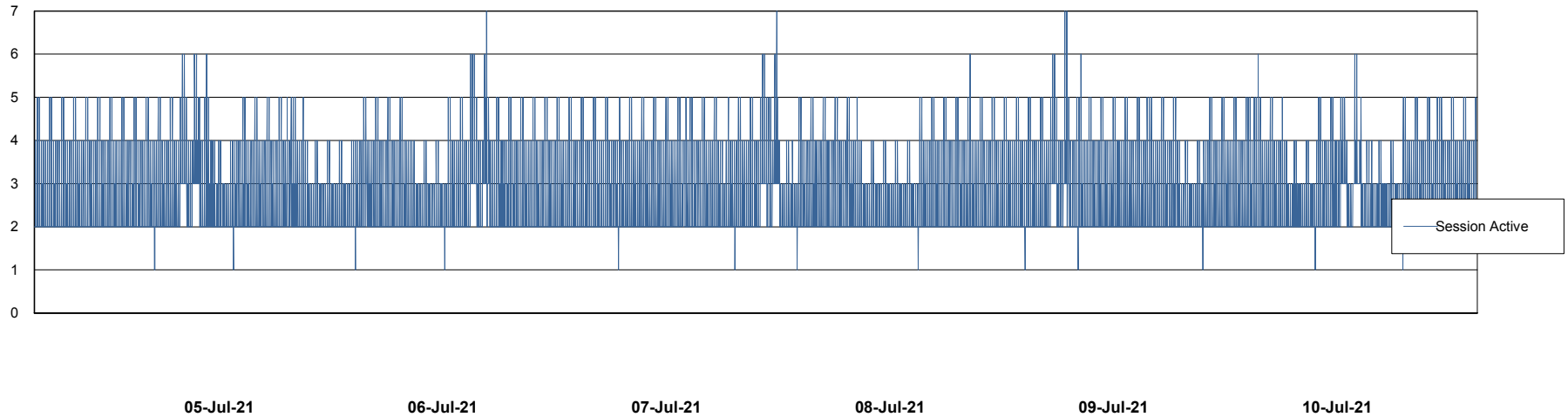
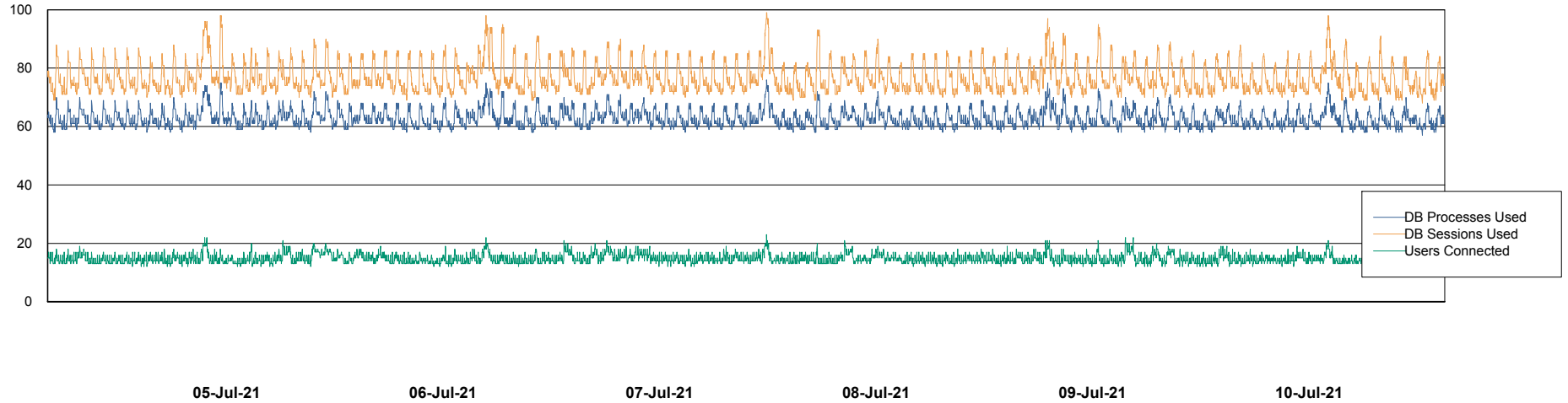
	Free disk space on c: (%)	Total disk space on c: (Gb)
10-Jul-21	52	100
09-Jul-21	52	100
08-Jul-21	52	100
07-Jul-21	52	100
06-Jul-21	52	100
05-Jul-21	52	100
04-Jul-21	52	100

# Weekly SLA Customer Report

Customer CLO Production  
Database ID 38



## Database Performance CLODB\_PRD\_BI

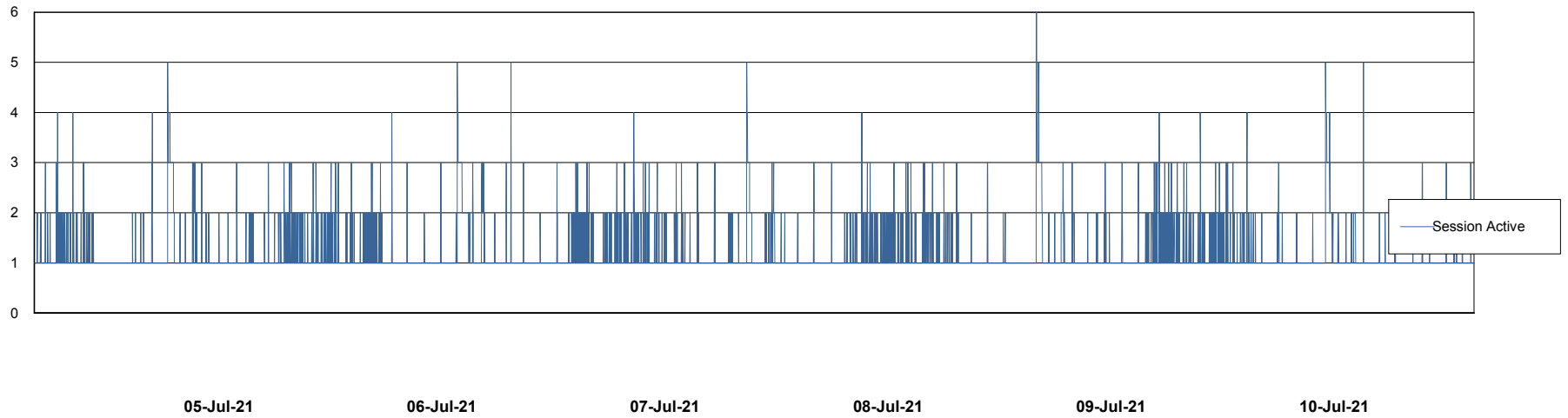
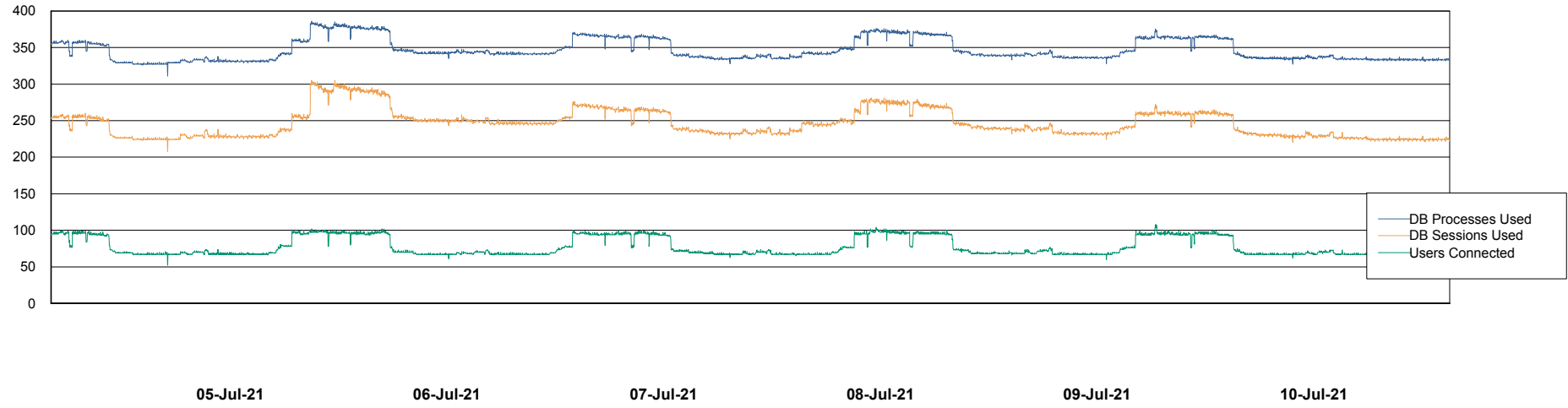


# Weekly SLA Customer Report

Customer CLO Production  
Database ID 38



## Database Performance CLODB\_PRD\_Production

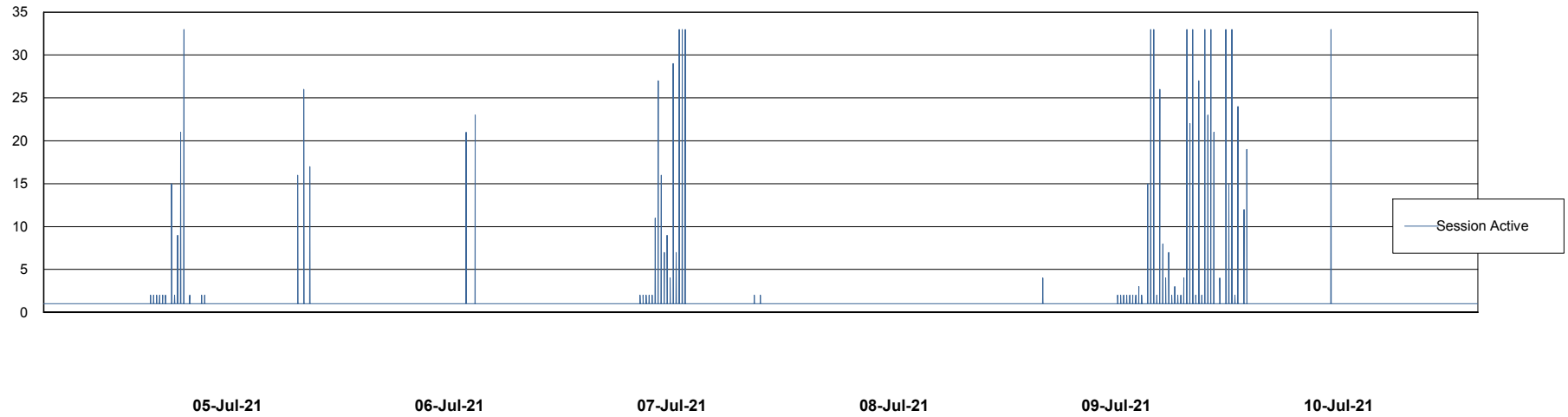
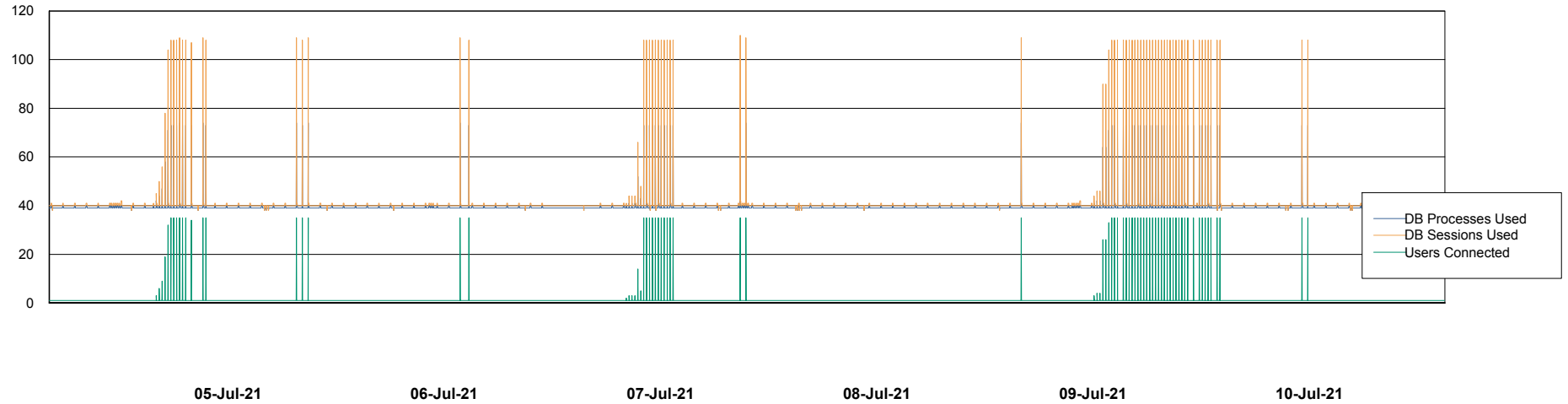


# Weekly SLA Customer Report

Customer CLO Production  
Database ID 38



## Database Performance CLODB\_PRD\_Standby

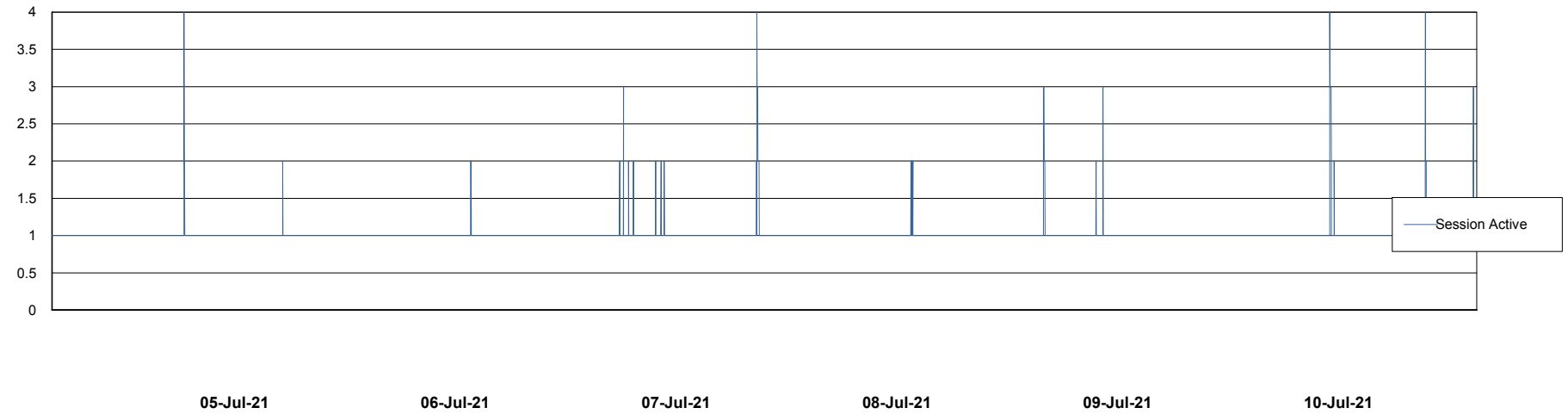
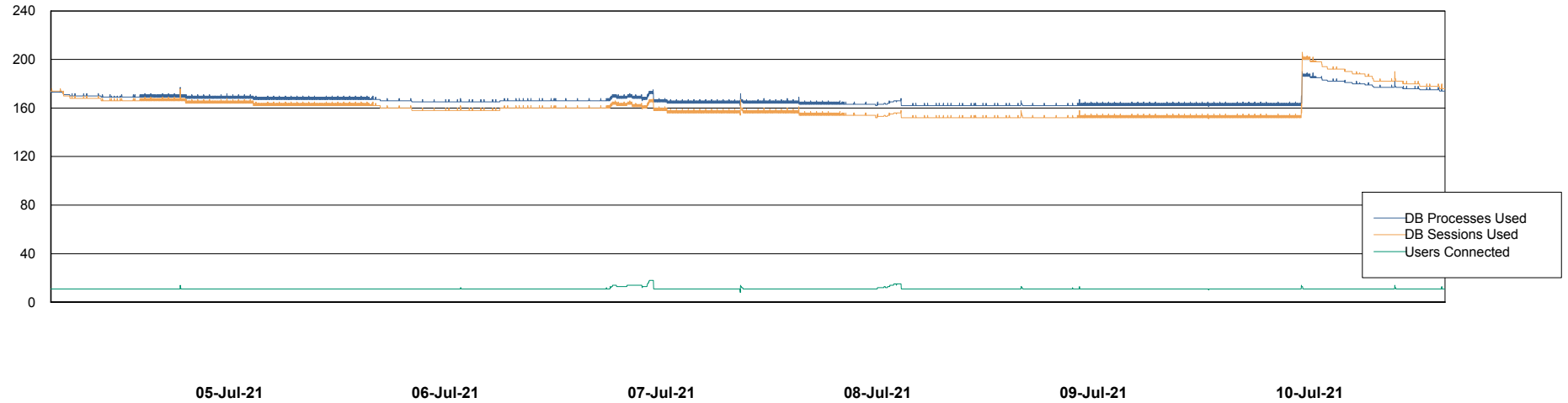


# Weekly SLA Customer Report

Customer CLO Production  
Database ID 38



## Database Performance CLODB\_PRD\_Test



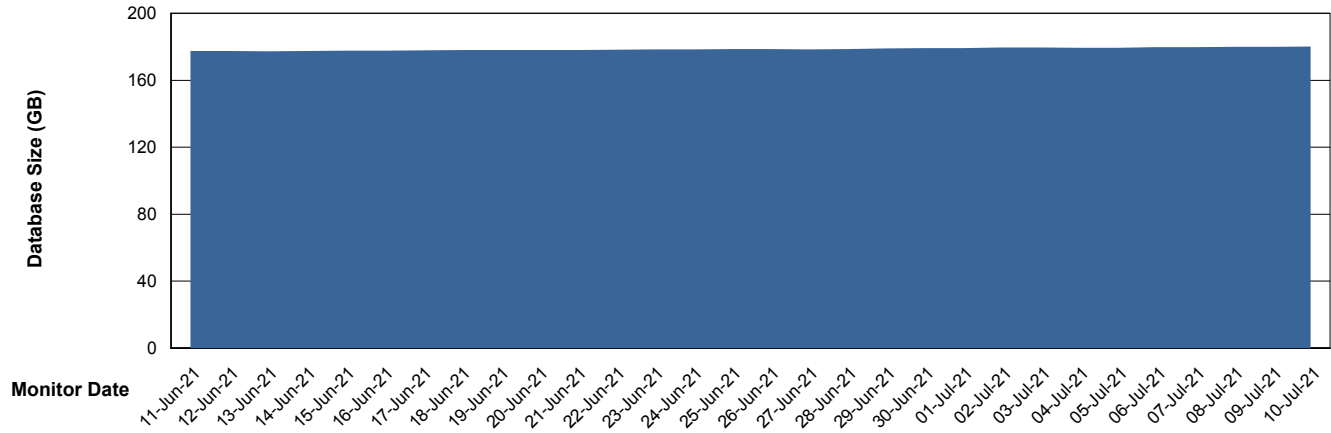
# Weekly SLA Customer Report

Customer CLO Production  
Database ID 38



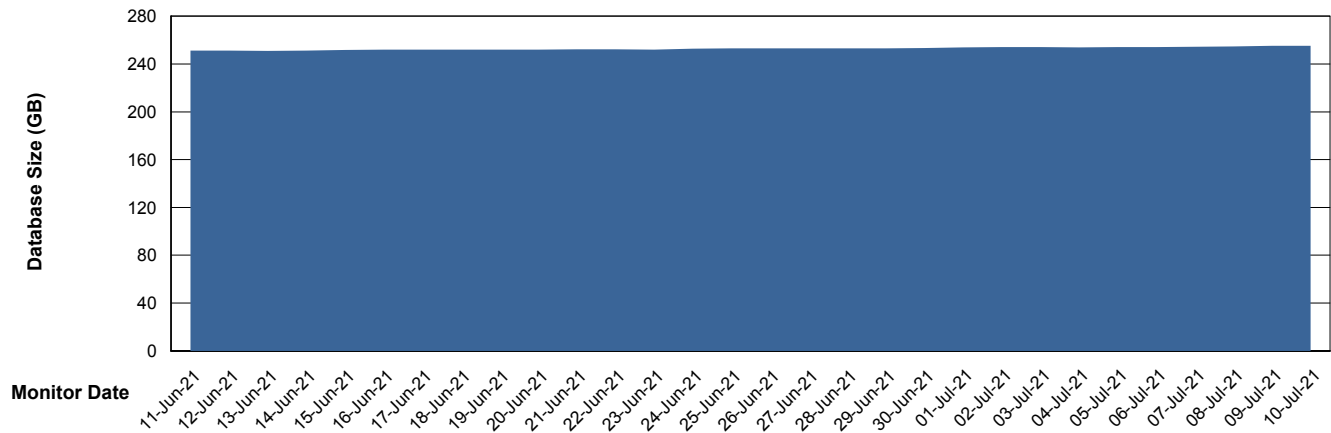
DATABASE SIZE CLODB\_PRD\_BI

### Database growth over last month



DATABASE SIZE CLODB\_PRD\_Production

### Database growth over last month



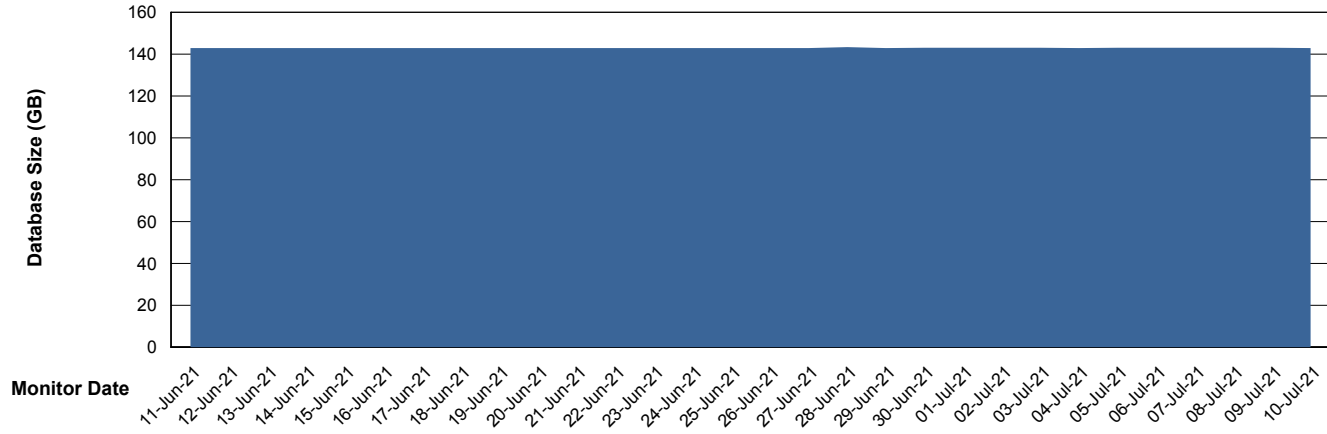
# Weekly SLA Customer Report

Customer CLO Production  
Database ID 38



DATABASE SIZE CLODB\_PRD\_Test

### Database growth over last month



# Weekly SLA Customer Report

Customer CLO Production  
Database ID 38



Database Tablespace CLODB\_PRD\_BI

Date	Tablespace Name	Filesize (Gb)	Usedsize (Gb)	Percentage free
10-Jul-21	ABSDATA	226	83	63
	INDX	116	88	24
09-Jul-21	ABSDATA	226	83	63
	INDX	116	88	24
08-Jul-21	ABSDATA	226	83	63
	INDX	116	88	24
07-Jul-21	ABSDATA	226	83	63
	INDX	116	88	24
06-Jul-21	ABSDATA	226	83	63
	INDX	116	88	24
05-Jul-21	ABSDATA	226	82	64
	INDX	116	88	24
04-Jul-21	ABSDATA	226	82	64
	INDX	116	88	24

# Weekly SLA Customer Report

Customer CLO Production  
 Database ID 38



Database Tablespace CLODB\_PRD\_Production

Date	Tablespace Name	Filesize (Gb)	Usedsize (Gb)	Percentage free
10-Jul-21	ABSDATA	102	75	26
	INDX	186	155	17
09-Jul-21	ABSDATA	102	75	26
	INDX	186	155	17
08-Jul-21	ABSDATA	102	75	26
	INDX	186	155	17
07-Jul-21	ABSDATA	102	75	26
	INDX	186	155	17
06-Jul-21	ABSDATA	102	75	26
	INDX	186	155	17
05-Jul-21	ABSDATA	102	75	26
	INDX	186	155	17
04-Jul-21	ABSDATA	102	75	26
	INDX	186	155	17

# Weekly SLA Customer Report

Customer CLO Production  
 Database ID 38



Database Tablespace CLODB\_PRD\_Test

Date	Tablespace Name	Filesize (Gb)	Usedsize (Gb)	Percentage free
10-Jul-21	ABSDATA	88	48	45
	INDX	112	93	17
09-Jul-21	ABSDATA	88	48	45
	INDX	112	93	17
08-Jul-21	ABSDATA	88	48	45
	INDX	112	93	17
07-Jul-21	ABSDATA	88	48	45
	INDX	112	93	17
06-Jul-21	ABSDATA	88	48	45
	INDX	112	93	17
05-Jul-21	ABSDATA	88	48	45
	INDX	112	93	17
04-Jul-21	ABSDATA	88	48	45
	INDX	112	93	17

BI Status and last ETL error for CLODB\_PRD\_BI

	Sun 4/7/2021	Mon 5/7/2021	Tue 6/7/2021	Wed 7/7/2021	Thu 8/7/2021	Fri 9/7/2021	Sat 10/7/2021
<b>ABS DataWarehouse ETL Health</b>	OK	OK	OK	OK	OK	OK	OK
<b>ABS DWHStaging ETL Health</b>	OK	OK	OK	OK	OK	OK	OK

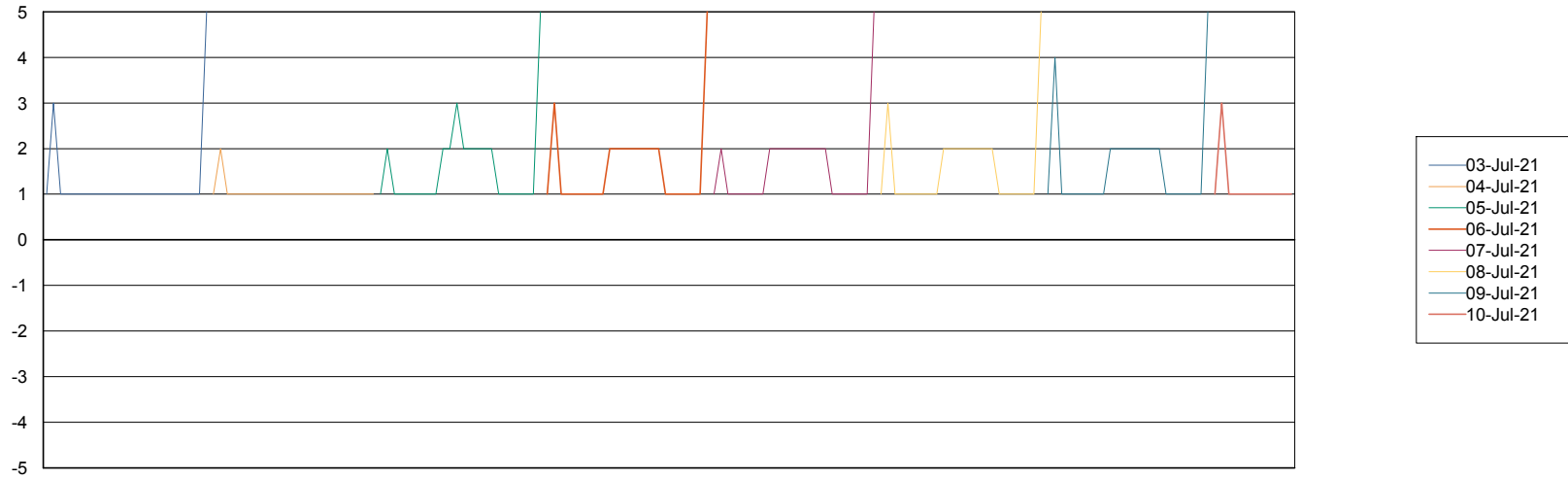
# Weekly SLA Customer Report

Customer CLO Production  
Database ID 38



Standby Database Health CLO Production

## Recovery lag for last 7 days



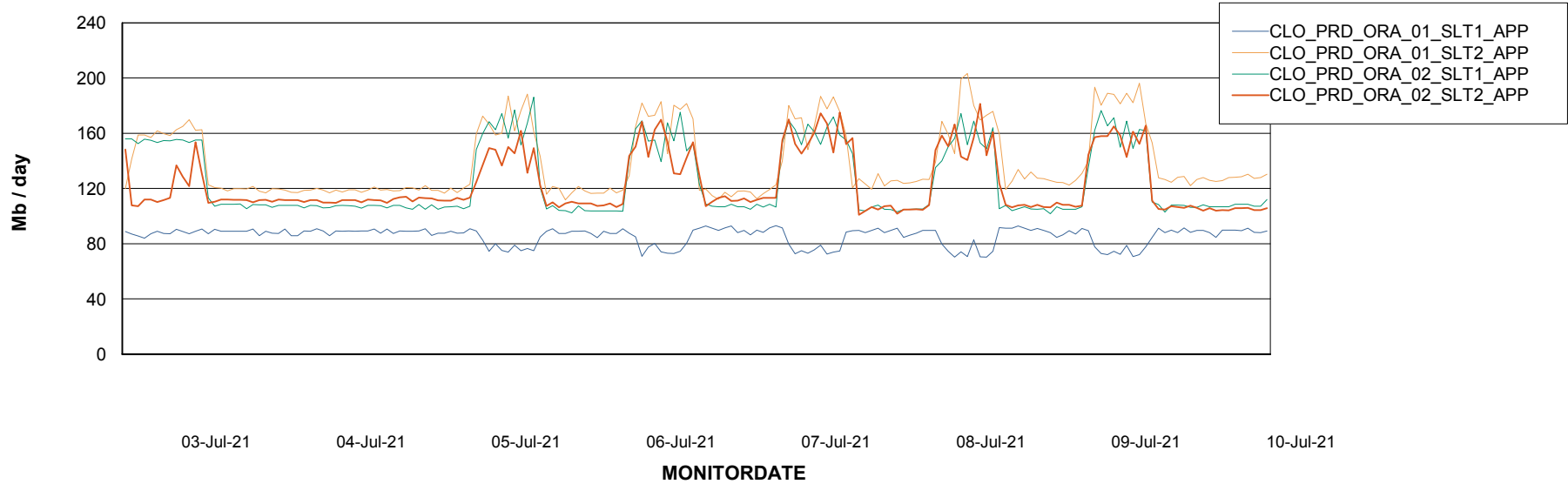
# Weekly SLA Customer Report

Customer CLO Production  
Database ID 38

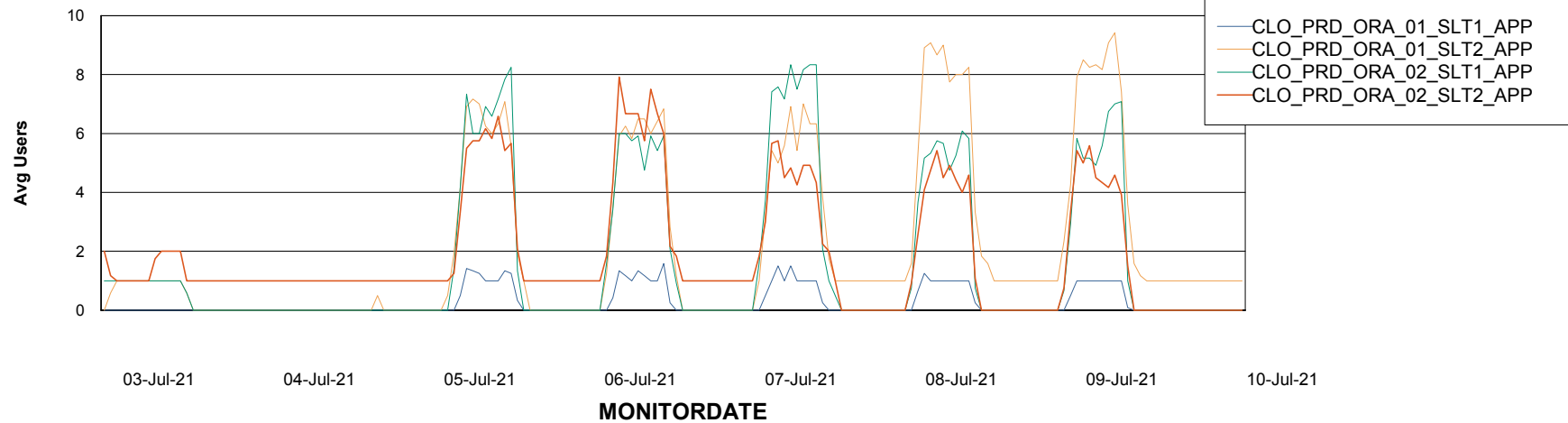


## ABSSolute Application Server Services

### Avg memory used per ABS Server Service



### Avg users per day per ABS server



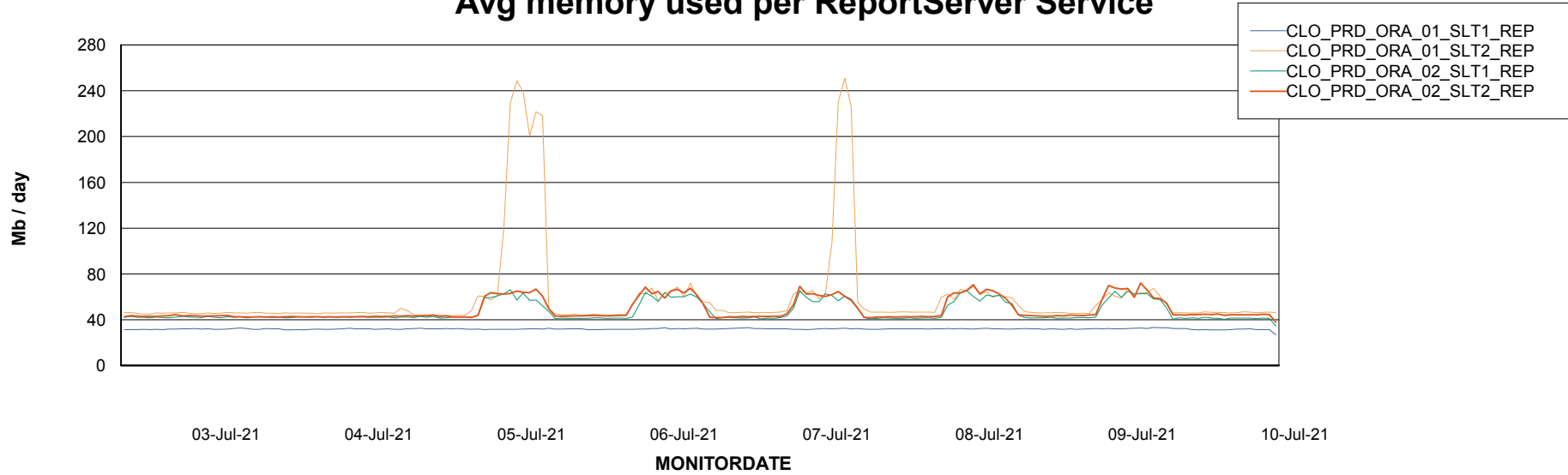
# Weekly SLA Customer Report

Customer CLO Production  
Database ID 38



## ABSSolute Application ReportServer Services

### Avg memory used per ReportServer Service



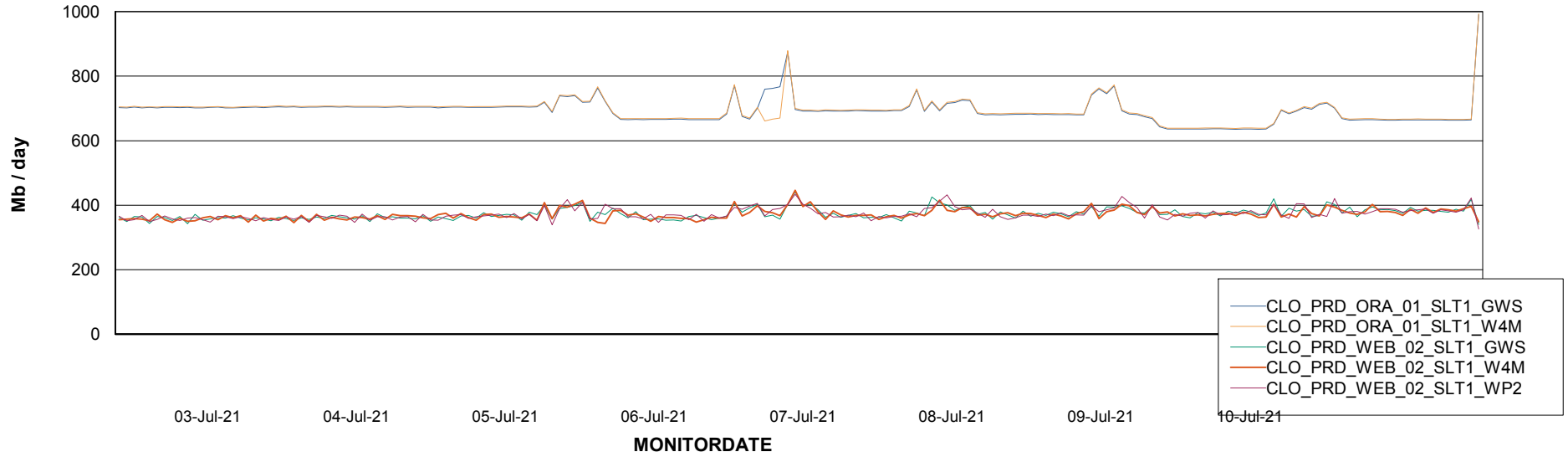
# Weekly SLA Customer Report

Customer CLO Production  
Database ID 38



## ABSSolute Web Component Services

### Avg memory used per ABS Web component



# Weekly SLA Customer Report

Customer CLO Production  
Database ID 38



## Disaster per ABS component

