

# Weekly SLA Customer Report

Customer STK\_Production  
Database ID 82



Harddisk Usage STK\_PRD\_STAABSAPP1

|           | Free disk space on c: (%) | Total disk space on c: (Gb) |
|-----------|---------------------------|-----------------------------|
| 03-Jul-21 | 61                        | 149                         |
| 02-Jul-21 | 61                        | 149                         |
| 01-Jul-21 | 61                        | 149                         |
| 30-Jun-21 | 61                        | 149                         |
| 29-Jun-21 | 61                        | 149                         |
| 28-Jun-21 | 61                        | 149                         |
| 27-Jun-21 | 61                        | 149                         |

Harddisk Usage STK\_PRD\_STAABSAPP2

|           | Free disk space on c: (%) | Total disk space on c: (Gb) |
|-----------|---------------------------|-----------------------------|
| 03-Jul-21 | 80                        | 149                         |
| 02-Jul-21 | 80                        | 149                         |
| 01-Jul-21 | 80                        | 149                         |
| 30-Jun-21 | 80                        | 149                         |
| 29-Jun-21 | 79                        | 149                         |
| 28-Jun-21 | 79                        | 149                         |
| 27-Jun-21 | 79                        | 149                         |

# Weekly SLA Customer Report

Customer STK\_Production  
Database ID 82



## Harddisk Usage STK\_PRD\_STAABSWEB1

|           | Free disk space on c: (%) | Total disk space on c: (Gb) |
|-----------|---------------------------|-----------------------------|
| 03-Jul-21 | 80                        | 100                         |
| 02-Jul-21 | 80                        | 100                         |
| 01-Jul-21 | 80                        | 100                         |
| 30-Jun-21 | 80                        | 100                         |
| 29-Jun-21 | 80                        | 100                         |
| 28-Jun-21 | 80                        | 100                         |
| 27-Jun-21 | 80                        | 100                         |

## Harddisk Usage STK\_STAABSDB1 Production DB Server

|           | Free disk space on c: (%) | Total disk space on c: (Gb) | Free disk space on d: (%) | Total disk space on d: (Gb) | Free disk space on e: (%) | Total disk space on e: (Gb) |
|-----------|---------------------------|-----------------------------|---------------------------|-----------------------------|---------------------------|-----------------------------|
| 03-Jul-21 | 60                        | 99                          | 34                        | 375                         | 57                        | 1,100                       |
| 02-Jul-21 | 60                        | 99                          | 34                        | 375                         | 57                        | 1,100                       |
| 01-Jul-21 | 60                        | 99                          | 34                        | 375                         | 57                        | 1,100                       |
| 30-Jun-21 | 60                        | 99                          | 34                        | 375                         | 57                        | 1,100                       |
| 29-Jun-21 | 60                        | 99                          | 33                        | 375                         | 57                        | 1,100                       |
| 28-Jun-21 | 61                        | 99                          | 34                        | 375                         | 58                        | 1,100                       |
| 27-Jun-21 | 62                        | 99                          | 34                        | 375                         | 58                        | 1,100                       |

# Weekly SLA Customer Report

Customer STK\_Production  
Database ID 82



Harddisk Usage STK\_STAABSDB2 Standby DB Server

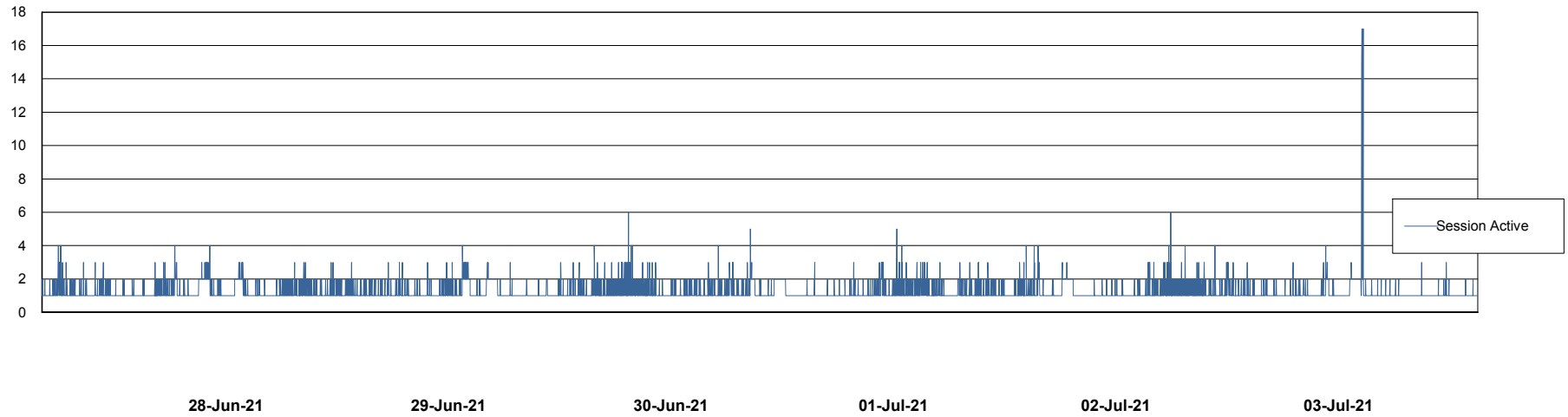
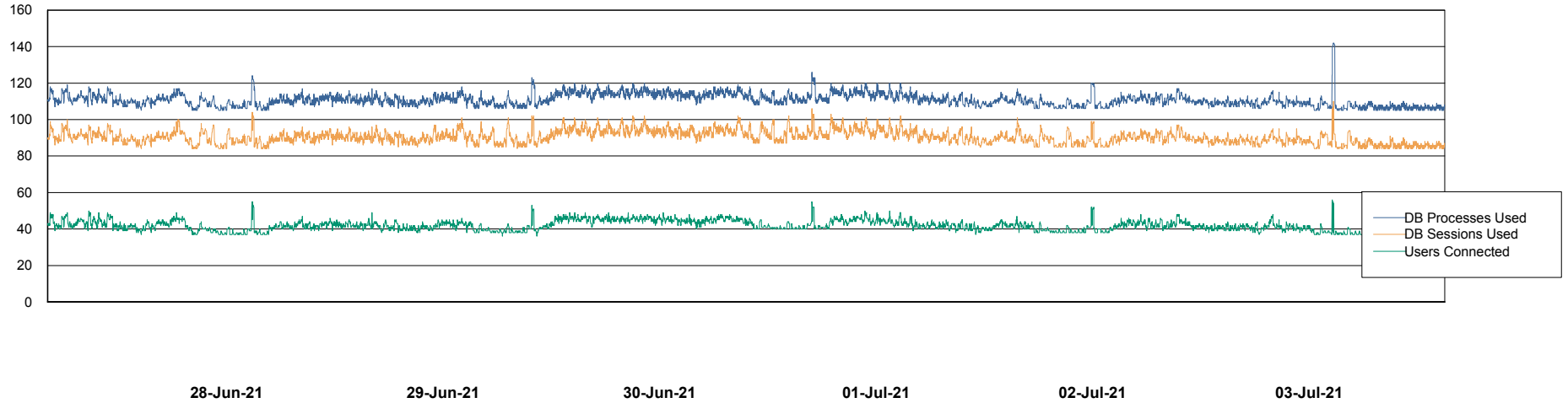
|           | Free disk space on c: (%) | Total disk space on c: (Gb) | Free disk space on d: (%) | Total disk space on d: (Gb) | Free disk space on e: (%) | Total disk space on e: (Gb) |
|-----------|---------------------------|-----------------------------|---------------------------|-----------------------------|---------------------------|-----------------------------|
| 03-Jul-21 | 71                        | 99                          | 38                        | 350                         | 23                        | 1,000                       |
| 02-Jul-21 | 71                        | 99                          | 38                        | 350                         | 23                        | 1,000                       |
| 01-Jul-21 | 71                        | 99                          | 38                        | 350                         | 23                        | 1,000                       |
| 30-Jun-21 | 71                        | 99                          | 38                        | 350                         | 23                        | 1,000                       |
| 29-Jun-21 | 71                        | 99                          | 38                        | 350                         | 23                        | 1,000                       |
| 28-Jun-21 | 71                        | 99                          | 38                        | 350                         | 23                        | 1,000                       |
| 27-Jun-21 | 71                        | 99                          | 38                        | 350                         | 24                        | 1,000                       |

# Weekly SLA Customer Report

Customer STK\_Production  
Database ID 82



## Database Performance STKDB\_ABS1 Production Database

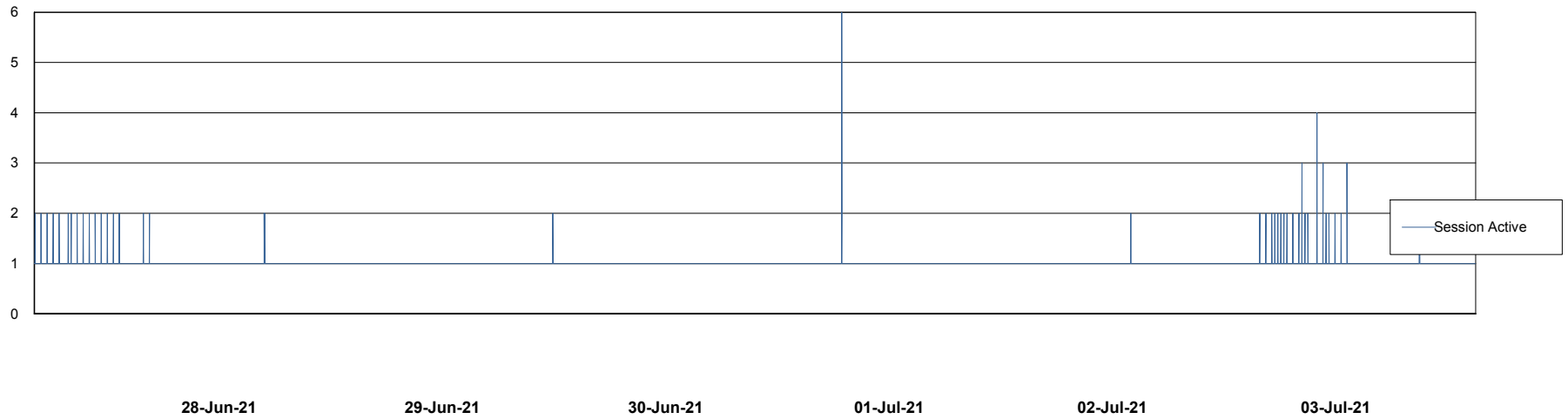
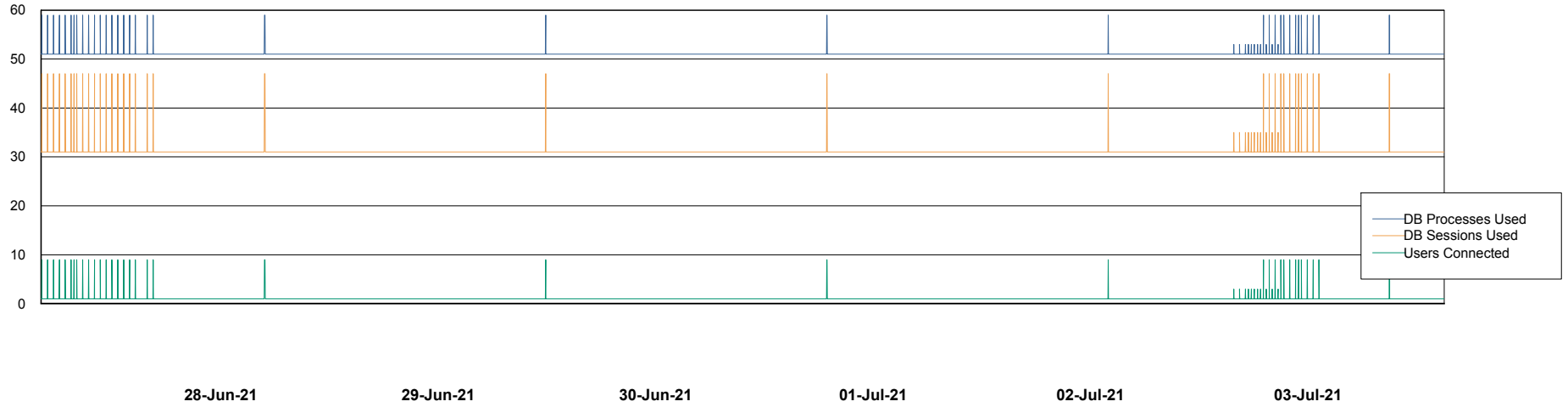


# Weekly SLA Customer Report

Customer STK\_Production  
Database ID 82



## Database Performance STKDB\_ABS1SB Standby Database



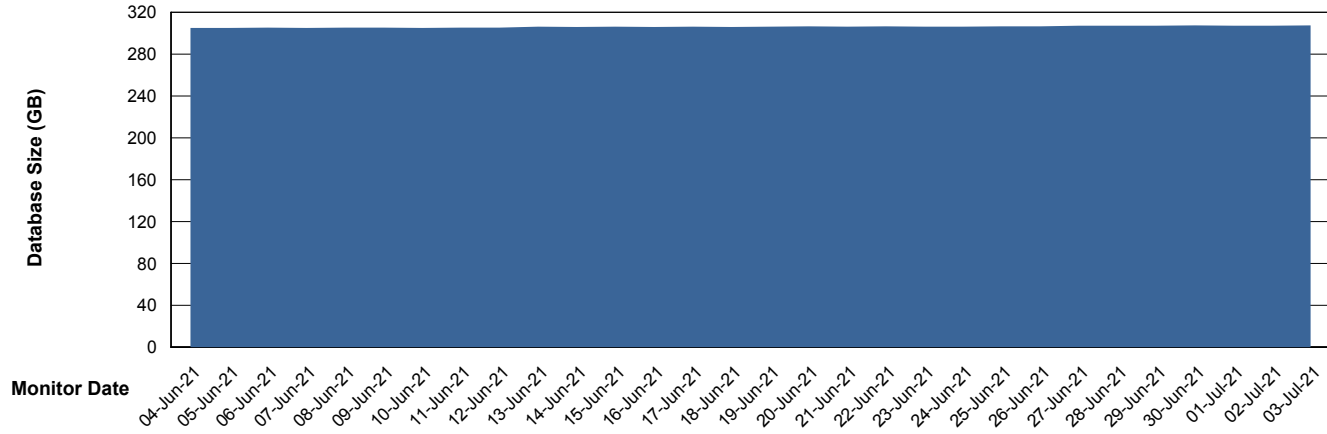
# Weekly SLA Customer Report

Customer STK\_Production  
 Database ID 82



DATABASE SIZE STKDB\_ABS1 Production Database

## Database growth over last month



Database Tablespace STKDB\_ABS1 Production Database

| Date      | Tablespace Name | Filesize (Gb) | Usedsize (Gb) | Percentage free |
|-----------|-----------------|---------------|---------------|-----------------|
| 03-Jul-21 | ABSDATA         | 177           | 125           | 29              |
|           | INDX            | 217           | 176           | 19              |
| 02-Jul-21 | ABSDATA         | 177           | 125           | 29              |
|           | INDX            | 217           | 176           | 19              |
| 01-Jul-21 | ABSDATA         | 177           | 125           | 29              |
|           | INDX            | 217           | 176           | 19              |
| 30-Jun-21 | ABSDATA         | 177           | 125           | 29              |
|           | INDX            | 217           | 176           | 19              |
| 29-Jun-21 | ABSDATA         | 177           | 125           | 29              |
|           | INDX            | 217           | 176           | 19              |
| 28-Jun-21 | ABSDATA         | 177           | 125           | 29              |
|           | INDX            | 217           | 176           | 19              |
| 27-Jun-21 | ABSDATA         | 177           | 125           | 29              |
|           | INDX            | 206           | 176           | 15              |



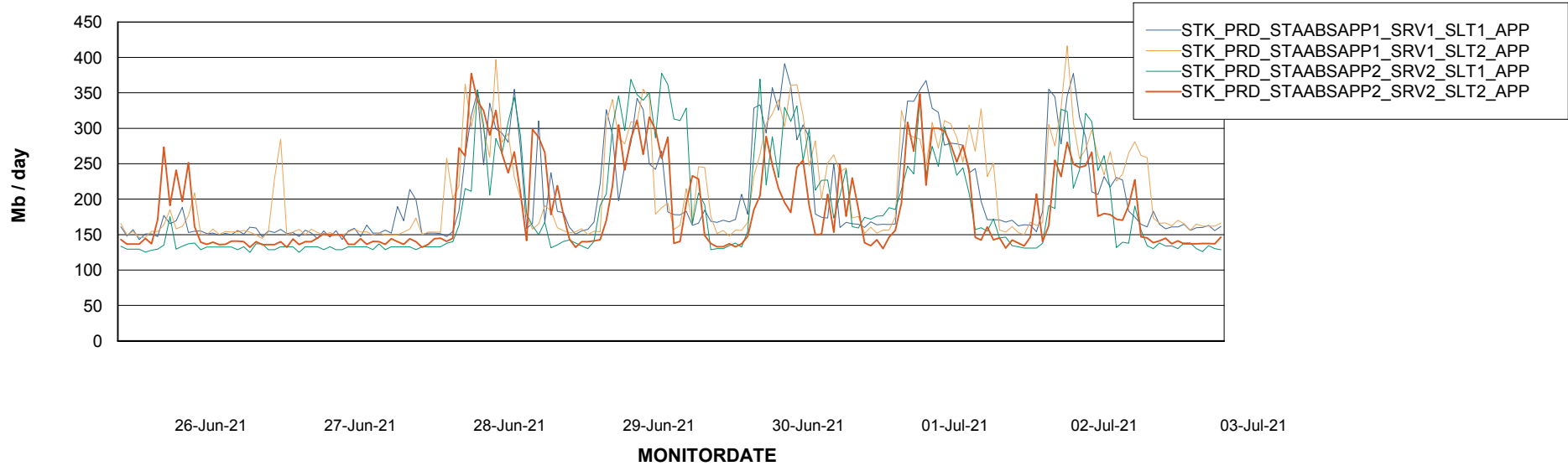
# Weekly SLA Customer Report

Customer STK\_Production  
Database ID 82

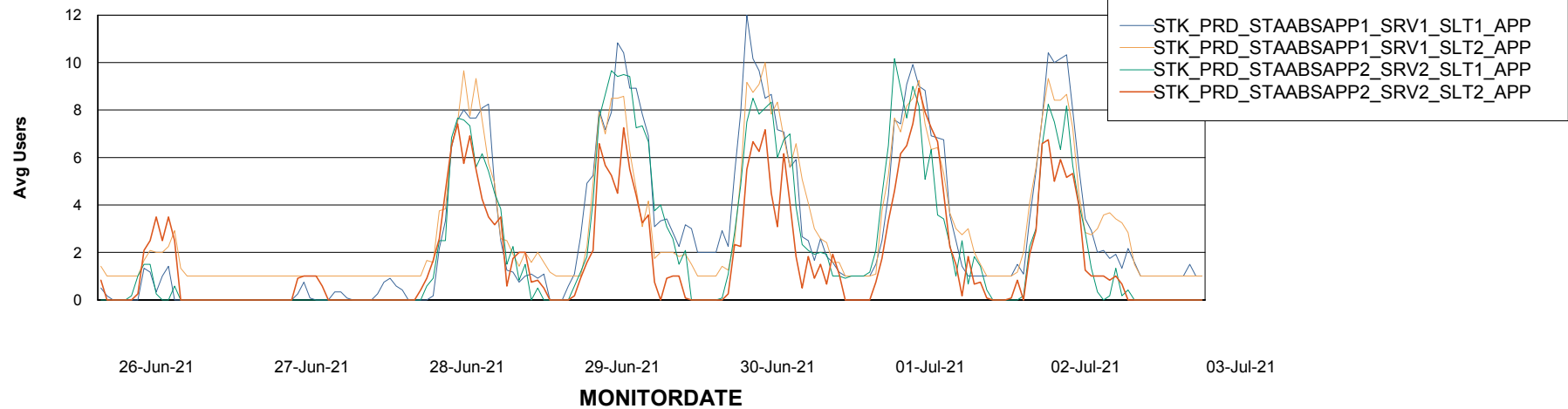


## ABSSolute Application Server Services

### Avg memory used per ABS Server Service



### Avg users per day per ABS server



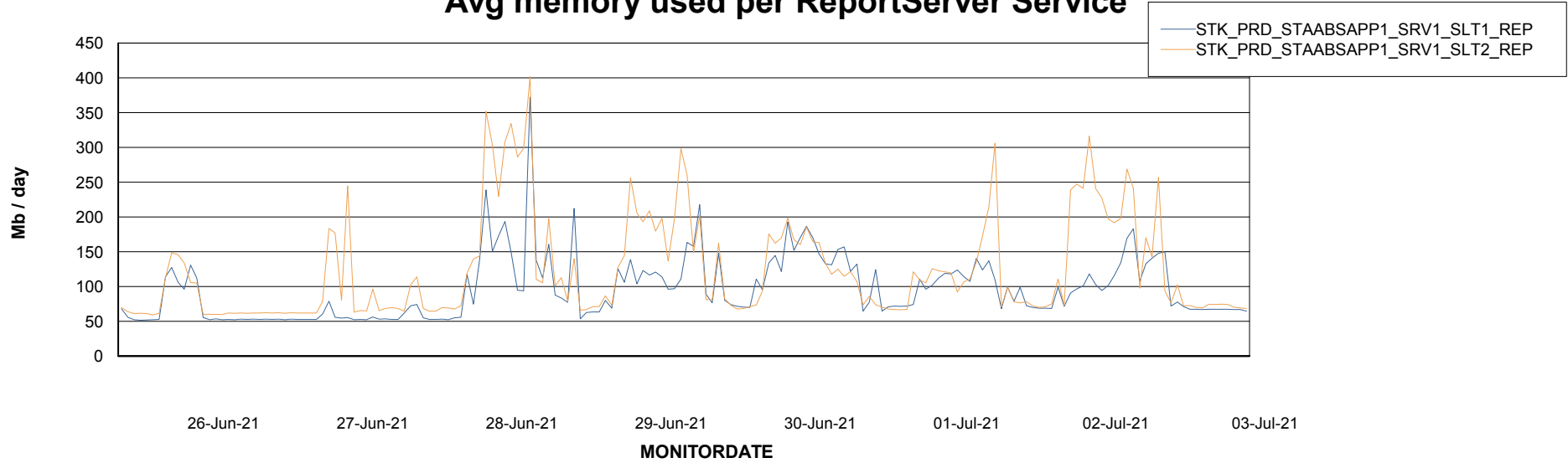
# Weekly SLA Customer Report

Customer STK\_Production  
Database ID 82



## ABSSolute Application ReportServer Services

### Avg memory used per ReportServer Service



### Disaster per ABS component

