

Weekly SLA Customer Report

Customer JSG_Production
Database ID 102



Harddisk Usage JSG_PRD_CRUSHER

	Free disk space on c: (%)
20-Feb-21	66
19-Feb-21	66
18-Feb-21	65
17-Feb-21	64
16-Feb-21	65
15-Feb-21	69
14-Feb-21	69

Harddisk Usage JSG_PRD_CYPHER

	Free disk space on c: (%)
20-Feb-21	66
19-Feb-21	66
18-Feb-21	67
17-Feb-21	66
16-Feb-21	68
15-Feb-21	72
14-Feb-21	72

Weekly SLA Customer Report

Customer JSG_Production
Database ID 102



Harddisk Usage JSG_PRD_GUINAN

	Free disk space on c: (%)	Total disk space on c: (Gb)
20-Feb-21	70	79
19-Feb-21	70	79
18-Feb-21	70	79
17-Feb-21	68	79
16-Feb-21	70	79
15-Feb-21	73	79
14-Feb-21	73	0

Harddisk Usage JSG_PRD_LAFORGE

	Free disk space on c: (%)
20-Feb-21	50
19-Feb-21	50
18-Feb-21	50
17-Feb-21	49
16-Feb-21	50
15-Feb-21	52
14-Feb-21	52

Weekly SLA Customer Report

Customer JSG_Production
 Database ID 102



Harddisk Usage JSG_PRD_PICARD

	Free disk space on c: (%)	Free disk space on d: (%)
20-Feb-21	52	75
19-Feb-21	52	75
18-Feb-21	52	75
17-Feb-21	51	75
16-Feb-21	52	75
15-Feb-21	55	75
14-Feb-21	55	75

Harddisk Usage JSG_PRD_RIKER

	Free disk space on c: (%)	Total disk space on c: (Gb)	Free disk space on d: (%)	Total disk space on d: (Gb)
20-Feb-21	0	0	40	0
19-Feb-21	0	0	40	0
18-Feb-21	0	149	40	1,024
17-Feb-21	1	149	40	1,024
16-Feb-21	2	149	40	1,024
15-Feb-21	4	149	40	1,024
14-Feb-21	4	149	40	1,024

Weekly SLA Customer Report

Customer JSG_Production
Database ID 102



Harddisk Usage JSG_PRD_TROI

	Free disk space on c: (%)
20-Feb-21	58
19-Feb-21	58
18-Feb-21	58
17-Feb-21	57
16-Feb-21	59
15-Feb-21	60
14-Feb-21	60

Harddisk Usage JSG_PRD_WORF

	Free disk space on c: (%)
20-Feb-21	56
19-Feb-21	56
18-Feb-21	56
17-Feb-21	55
16-Feb-21	56
15-Feb-21	58
14-Feb-21	58

Weekly SLA Customer Report

Customer JSG_Production
Database ID 102



Harddisk Usage JSG_PRD_YAR

	Free disk space on c: (%)	Free disk space on d: (%)
20-Feb-21	57	84
19-Feb-21	57	84
18-Feb-21	56	84
17-Feb-21	56	84
16-Feb-21	58	84
15-Feb-21	59	83
14-Feb-21	59	83

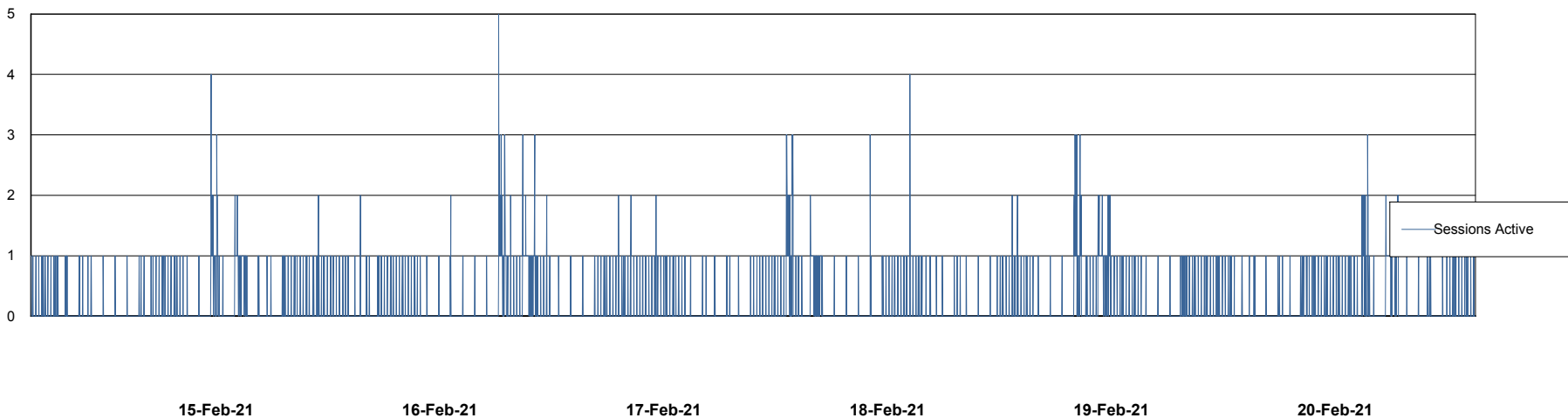
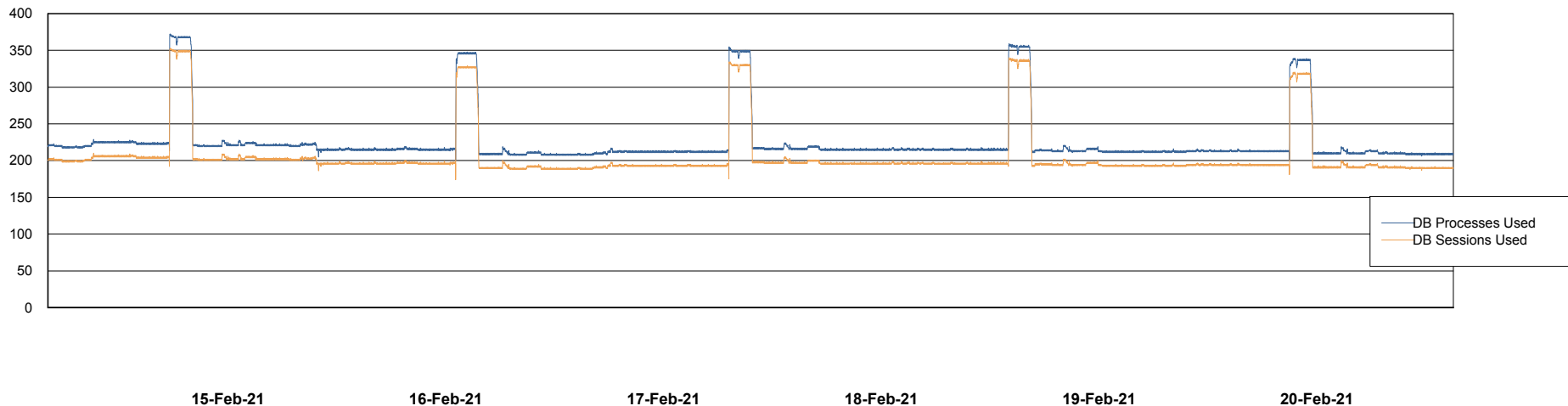
Weekly SLA Customer Report

Customer JSG_Production
Database ID 102



Database Performance JSG_PRD_PICARD_DB

DB Processes Max 1,000



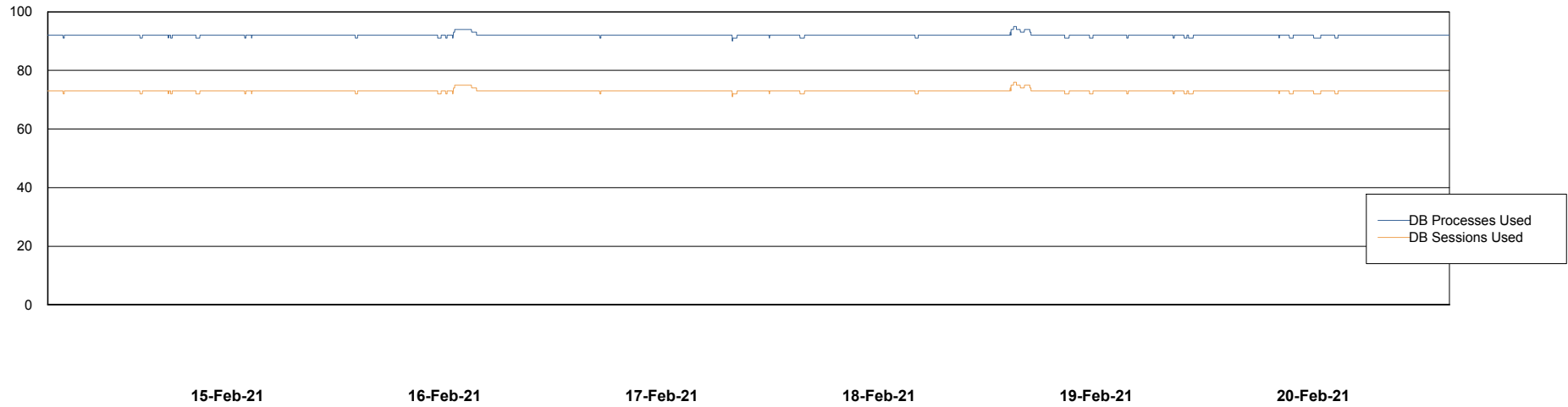
Weekly SLA Customer Report

Customer JSG_Production
Database ID 102



Database Performance JSG_PRD_RIKER_DB

DB Processes Max 1,000



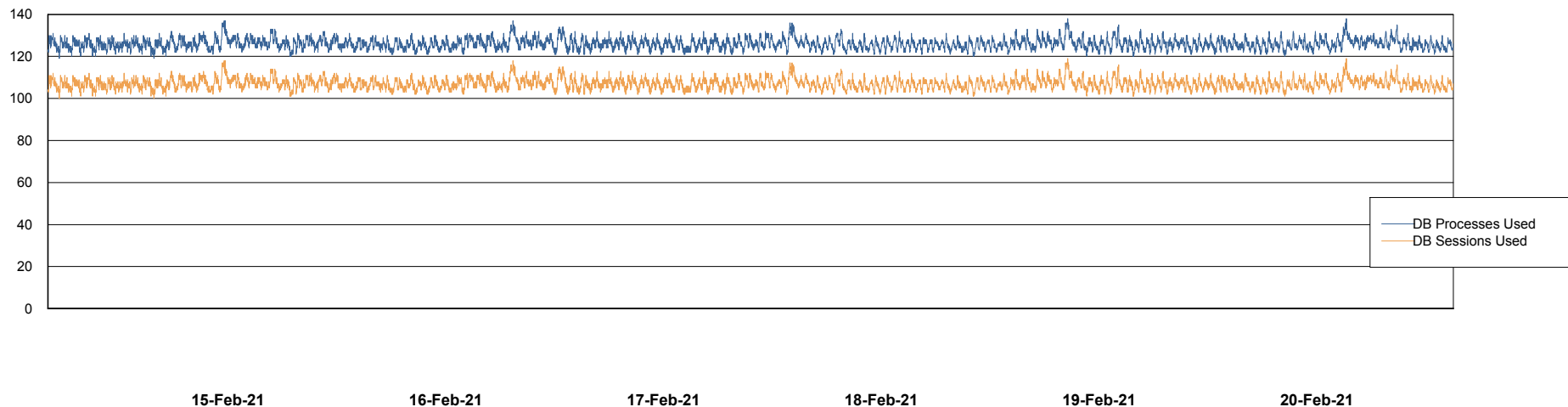
Weekly SLA Customer Report

Customer JSG_Production
Database ID 102



Database Performance JSG_PRD_YAR

DB Processes Max 1,000



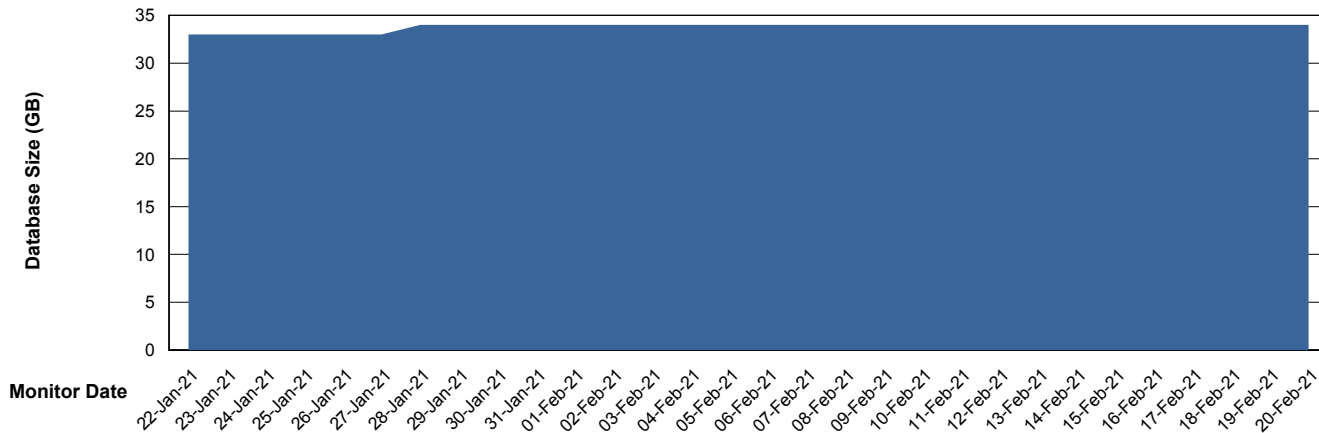
Weekly SLA Customer Report

Customer JSG_Production
Database ID 102



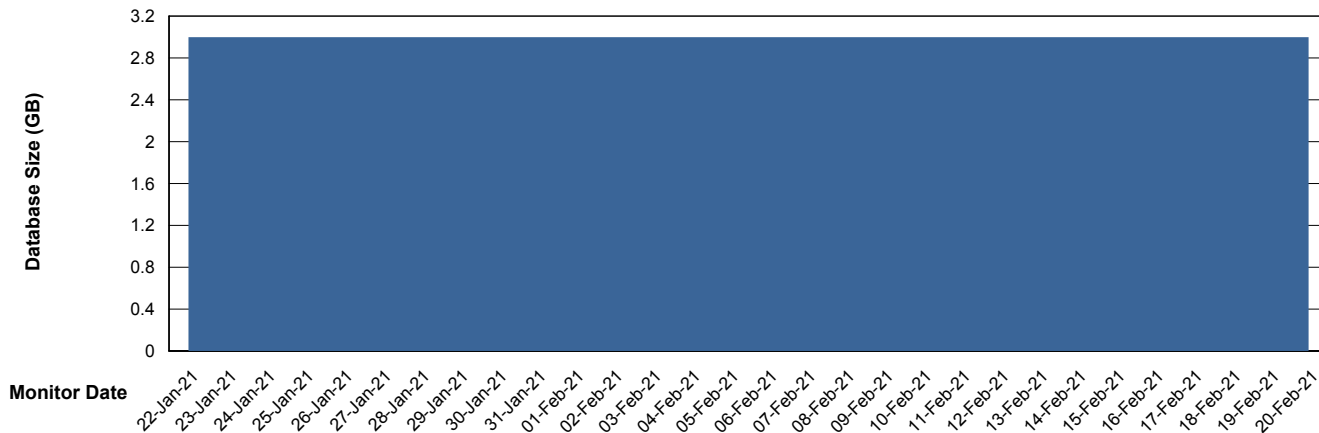
DATABASE SIZE JSG_PRD_PICARD_DB

Database growth over last month



DATABASE SIZE JSG_PRD_YAR

Database growth over last month



Weekly SLA Customer Report

Customer JSG_Production
Database ID 102



Database Tablespace JSG_PRD_PICARD_DB

Date	Tablespace Name	Filesize (Gb)	Usedsize (Gb)	Percentage free
20-Feb-21	ABSDATA	40	3	93
	INDX	40	0	100
19-Feb-21	ABSDATA	40	3	93
	INDX	40	0	100
18-Feb-21	ABSDATA	40	3	93
	INDX	40	0	100
17-Feb-21	ABSDATA	40	3	93
	INDX	40	0	100
16-Feb-21	ABSDATA	40	3	93
	INDX	40	0	100
15-Feb-21	ABSDATA	40	3	93
	INDX	40	0	100
14-Feb-21	ABSDATA	40	3	93
	INDX	40	0	100

Weekly SLA Customer Report

Customer JSG_Production
 Database ID 102



Database Tablespace JSG_PRD_YAR

Date	Tablespace Name	Filesize (Gb)	Usedsize (Gb)	Percentage free
20-Feb-21	ABSDATA	40	1	98
	INDX	40	0	99
19-Feb-21	ABSDATA	40	1	98
	INDX	40	0	99
18-Feb-21	ABSDATA	40	1	98
	INDX	40	0	99
17-Feb-21	ABSDATA	40	1	98
	INDX	40	0	99
16-Feb-21	ABSDATA	40	1	98
	INDX	40	0	99
15-Feb-21	ABSDATA	40	1	98
	INDX	40	0	99
14-Feb-21	ABSDATA	40	1	98
	INDX	40	0	99

BI Status and last ETL error for JSG_PRD_YAR

	Mon 15/2/2021	Tue 16/2/2021	Wed 17/2/2021	Thu 18/2/2021	Fri 19/2/2021	Sat 20/2/2021
ABS DataWarehouse ETL Health	Not OK	Not OK	Not OK	Not OK	Not OK	Not OK
ABS DWHStaging ETL Health	Not OK	Not OK	Not OK	Not OK	Not OK	Not OK

Weekly SLA Customer Report

Customer JSG_Production
Database ID 102



BI last ETL error for	JSG_PRD_YAR
Tue, 16-02-2021	None
Thu, 18-02-2021	ORA-12899: value too large for column "ABSDWHSTAGING"."STDIM_COST_CENTER"."CONTACT_PERSON" (actual: 42, maximum: 40)
Fri, 19-02-2021	ORA-12899: value too large for column "ABSDWHSTAGING"."STDIM_COST_CENTER"."CONTACT_PERSON" (actual: 42, maximum: 40)
Thu, 18-02-2021	None
Sun, 14-02-2021	None
Sat, 20-02-2021	None
Mon, 15-02-2021	ORA-12899: value too large for column "ABSDWHSTAGING"."STDIM_COST_CENTER"."CONTACT_PERSON" (actual: 42, maximum: 40)
Fri, 19-02-2021	None
Sun, 14-02-2021	ORA-12899: value too large for column "ABSDWHSTAGING"."STDIM_COST_CENTER"."CONTACT_PERSON" (actual: 42, maximum: 40)
Sat, 20-02-2021	ORA-12899: value too large for column "ABSDWHSTAGING"."STDIM_COST_CENTER"."CONTACT_PERSON" (actual: 42, maximum: 40)
Mon, 15-02-2021	None
Tue, 16-02-2021	ORA-12899: value too large for column "ABSDWHSTAGING"."STDIM_COST_CENTER"."CONTACT_PERSON" (actual: 42, maximum: 40)
Wed, 17-02-2021	None
Wed, 17-02-2021	ORA-12899: value too large for column "ABSDWHSTAGING"."STDIM_COST_CENTER"."CONTACT_PERSON" (actual: 42, maximum: 40)

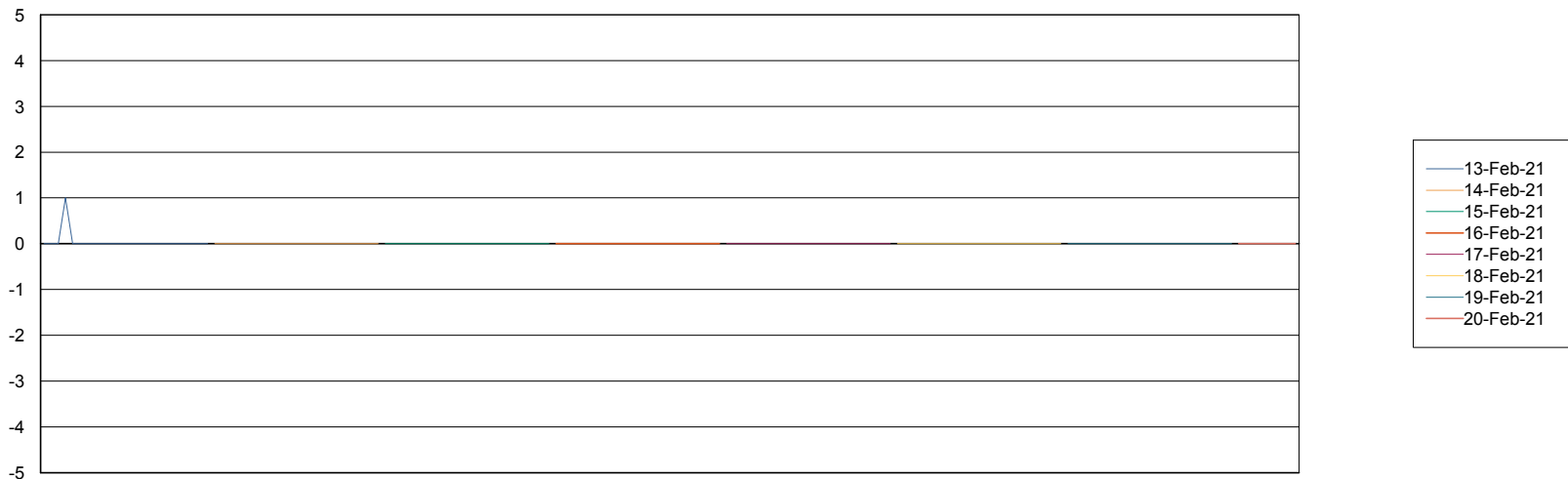
Weekly SLA Customer Report

Customer JSG_Production
Database ID 102



Standby Database Health JSG_Production

Recovery lag for last 7 days



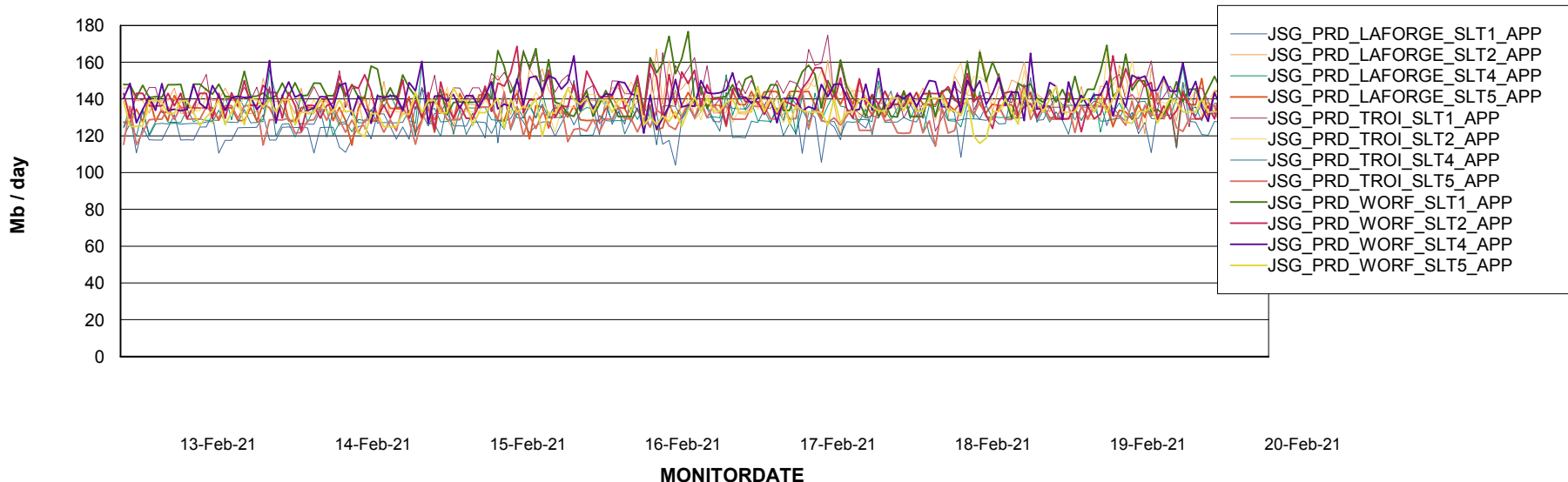
Weekly SLA Customer Report

Customer JSG_Production
Database ID 102

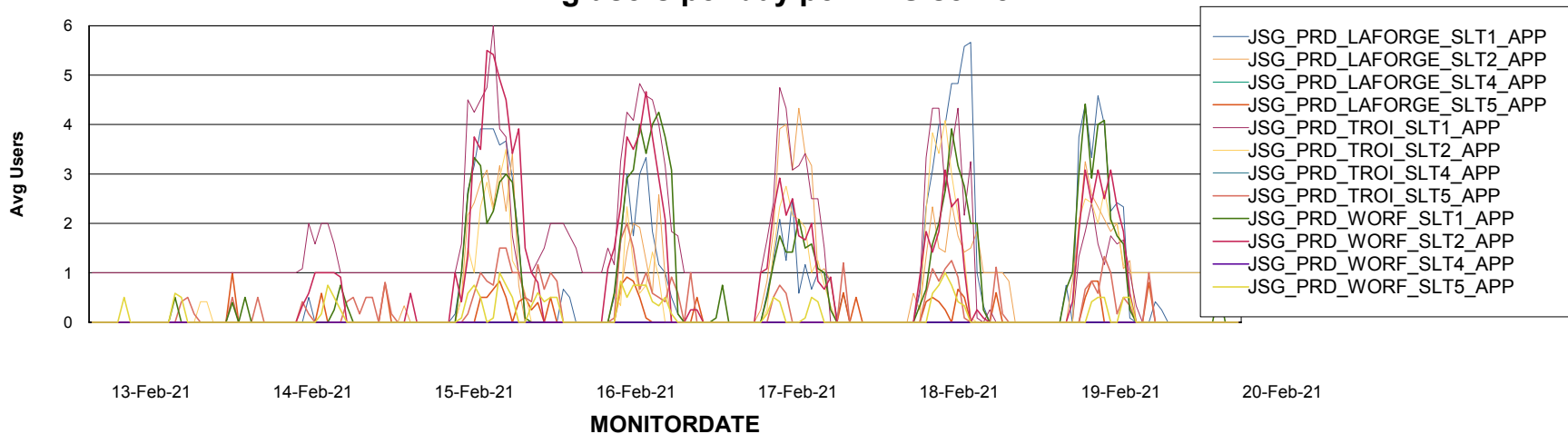


ABSSolute Application Server Services

Avg memory used per ABS Server Service



Avg users per day per ABS server



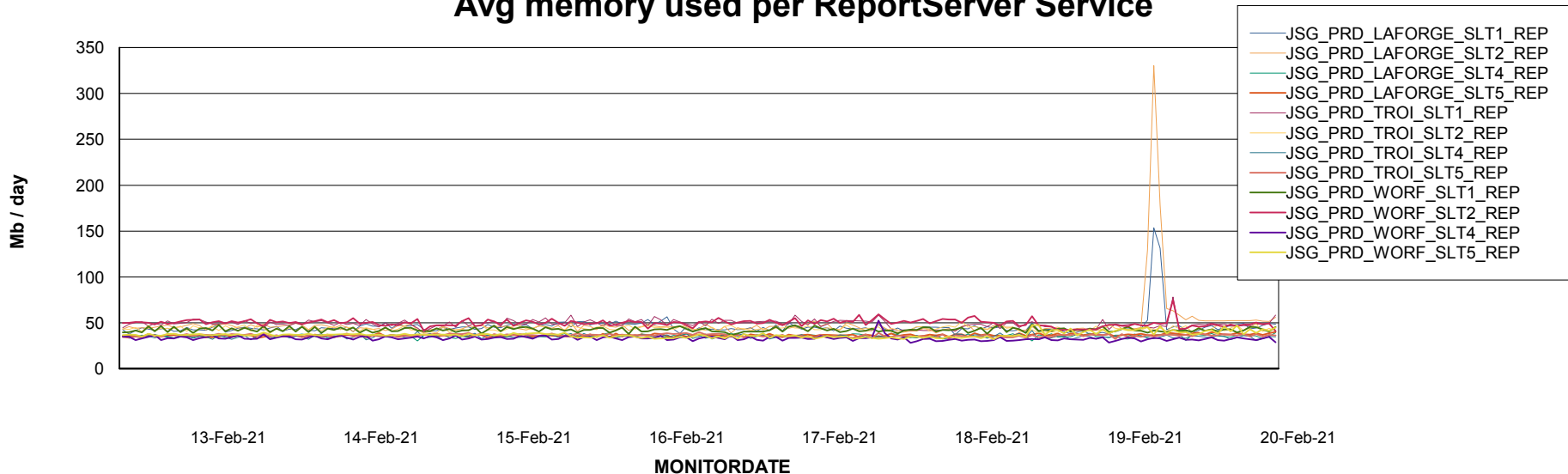
Weekly SLA Customer Report

Customer JSG_Production
Database ID 102



ABSSolute Application ReportServer Services

Avg memory used per ReportServer Service



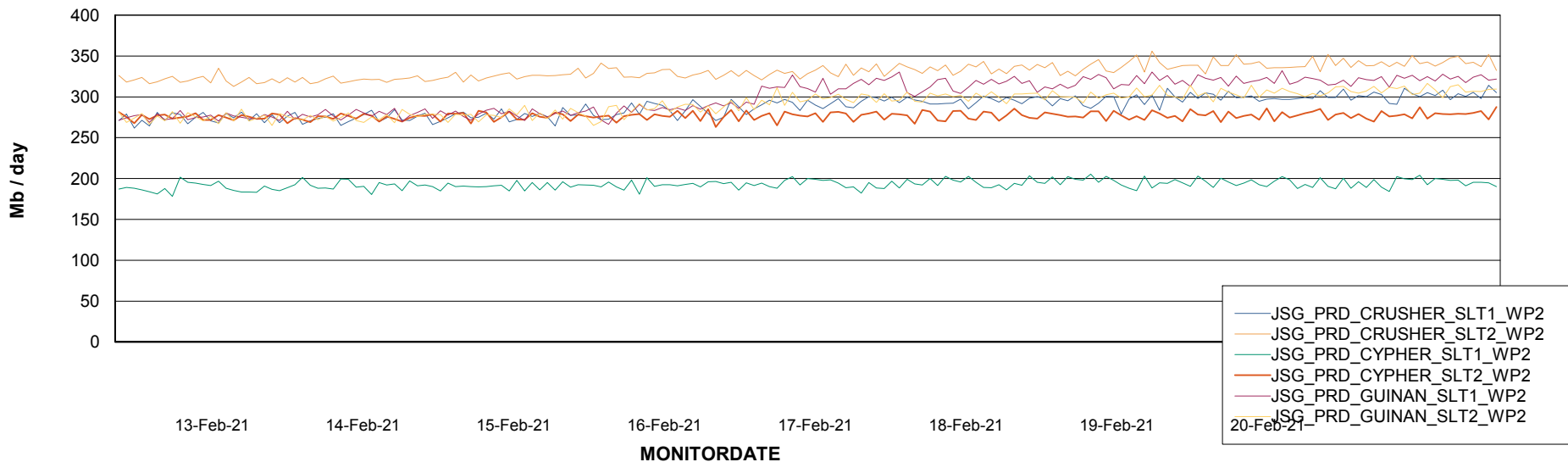
Weekly SLA Customer Report

Customer JSG_Production
Database ID 102



ABSolute Web Component Services

Avg memory used per ABS Web component



Weekly SLA Customer Report

Customer JSG_Production
Database ID 102



Disaster per ABS component

