

Weekly SLA Customer Report

Customer CUS Production
 Database ID 84



Harddisk Usage CUS_ABSBI

	Free disk space on c: (%)	Total disk space on c: (Gb)	Free disk space on d: (%)	Total disk space on d: (Gb)
20-Feb-21	70	199	56	800
19-Feb-21	70	199	56	800
18-Feb-21	70	199	56	800
17-Feb-21	70	199	56	800
16-Feb-21	70	199	56	800
15-Feb-21	70	199	56	800
14-Feb-21	70	199	56	800

Harddisk Usage CUS_ABSPROD1

	Free disk space on c: (%)	Total disk space on c: (Gb)
20-Feb-21	22	199
19-Feb-21	22	199
18-Feb-21	22	199
17-Feb-21	23	199
16-Feb-21	23	199
15-Feb-21	23	199
14-Feb-21	23	199

Weekly SLA Customer Report

Customer CUS Production
Database ID 84



Harddisk Usage CUS_ABSPROD2

	Free disk space on c: (%)	Total disk space on c: (Gb)
20-Feb-21	16	300
19-Feb-21	16	300
18-Feb-21	16	300
17-Feb-21	16	300
16-Feb-21	16	300
15-Feb-21	16	300
14-Feb-21	16	300

Harddisk Usage CUS_ABSWEBPROD

	Free disk space on c: (%)	Total disk space on c: (Gb)
20-Feb-21	70	199
19-Feb-21	70	199
18-Feb-21	70	199
17-Feb-21	70	199
16-Feb-21	70	199
15-Feb-21	70	199
14-Feb-21	70	199

Weekly SLA Customer Report

Customer CUS Production
Database ID 84



Harddisk Usage CUS_PrimaryDBSrv_ABSDB1

	Free disk space on c: (%)	Total disk space on c: (Gb)	Free disk space on d: (%)	Total disk space on d: (Gb)
20-Feb-21	49	199	23	1,024
19-Feb-21	49	199	22	1,024
18-Feb-21	49	199	22	1,024
17-Feb-21	49	199	23	1,024
16-Feb-21	49	199	23	1,024
15-Feb-21	49	199	23	1,024
14-Feb-21	49	199	23	1,024

Harddisk Usage CUS_StandByDBSrv_ABSDB2

	Free disk space on c: (%)	Total disk space on c: (Gb)	Free disk space on d: (%)	Total disk space on d: (Gb)
20-Feb-21	69	199	41	1,024
19-Feb-21	69	199	41	1,024
18-Feb-21	69	199	41	1,024
17-Feb-21	69	199	41	1,024
16-Feb-21	69	199	41	1,024
15-Feb-21	69	199	41	1,024
14-Feb-21	69	199	41	1,024

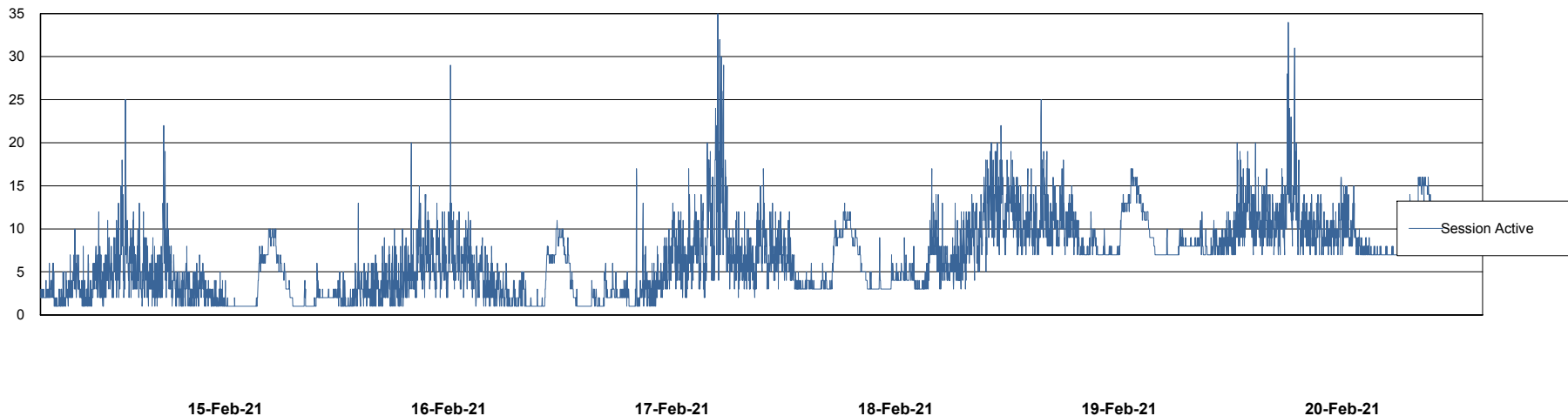
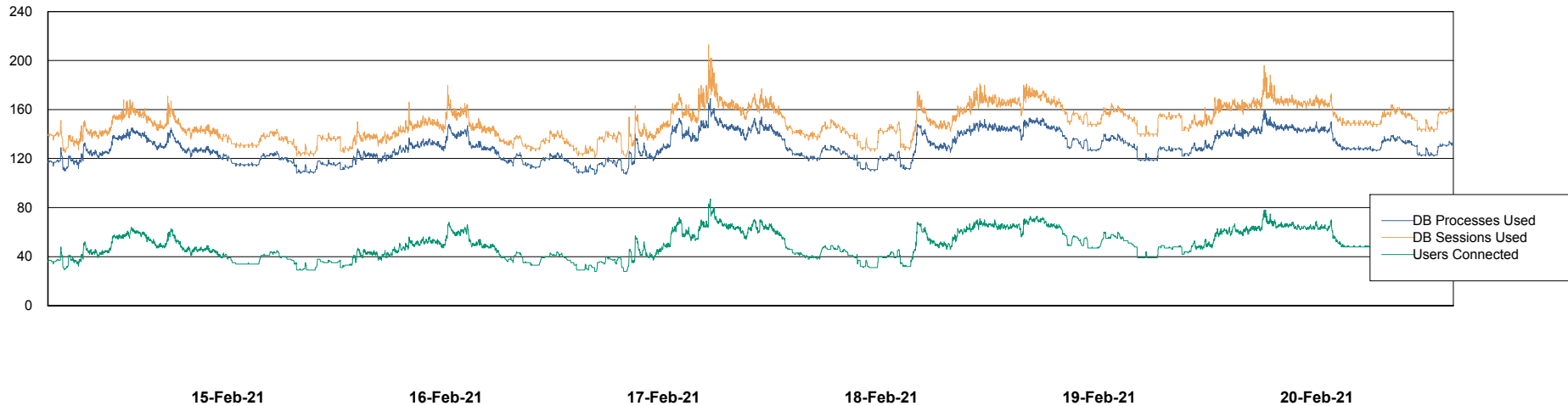
Weekly SLA Customer Report

Customer CUS Production
Database ID 84



Database Performance CUS_ProdDB_Primary

DB Processes Max 300
DB Sessions Max 472



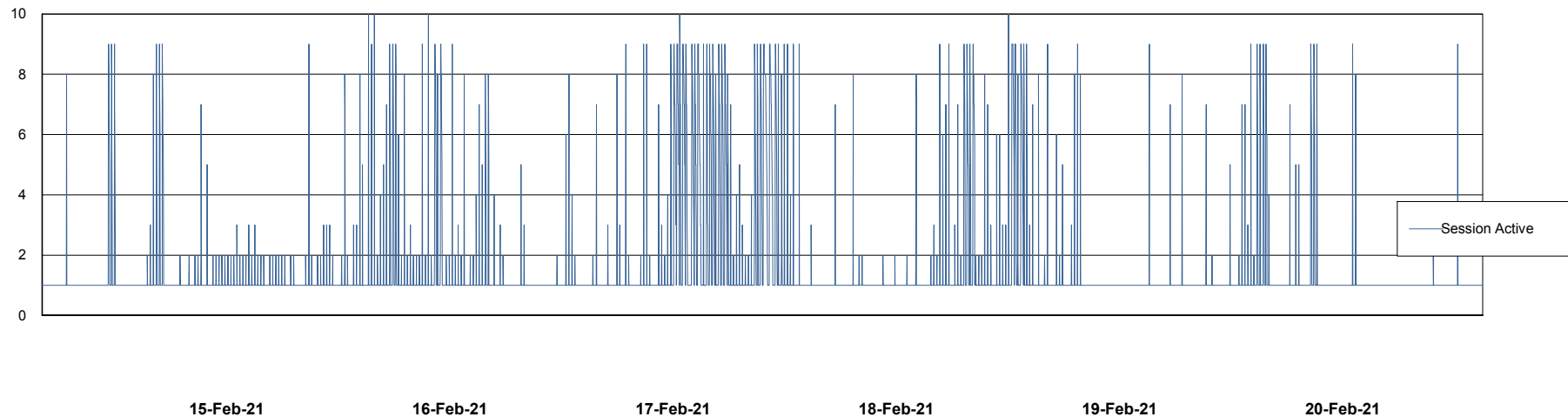
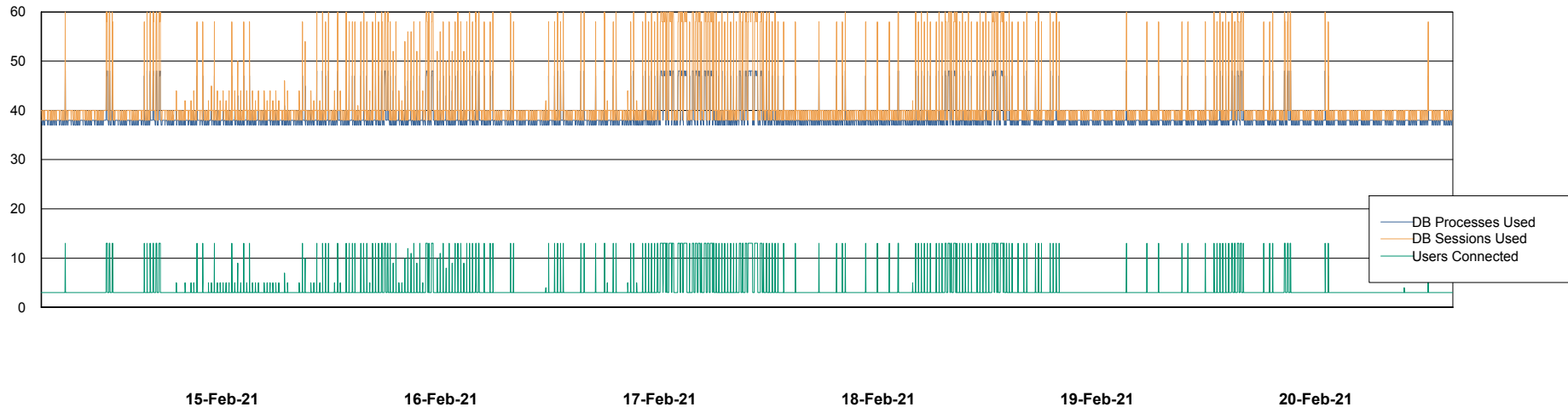
Weekly SLA Customer Report

Customer CUS Production
Database ID 84



Database Performance CUS_ProdDB_Standby

DB Processes Max 300
DB Sessions Max 472



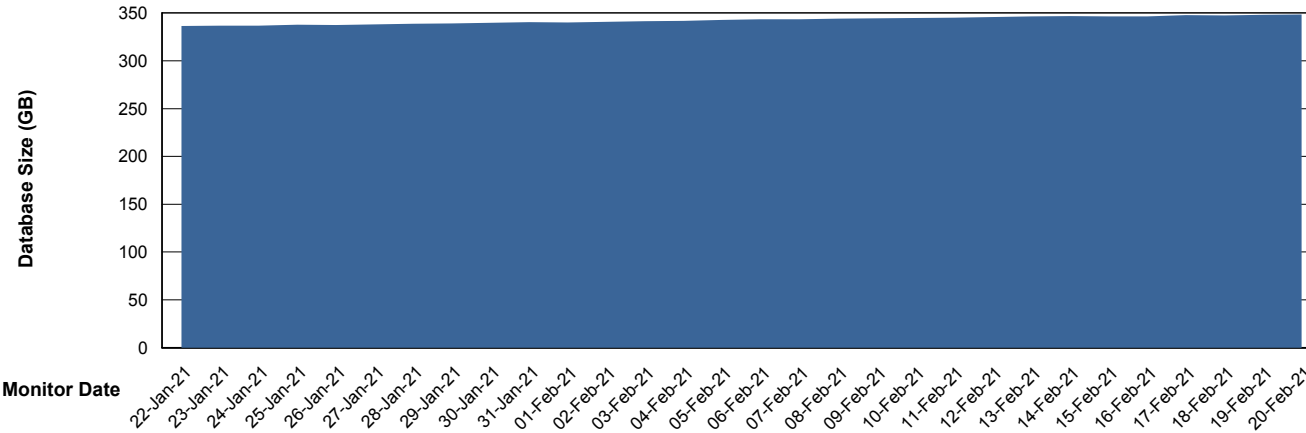
Weekly SLA Customer Report

Customer CUS Production
 Database ID 84



DATABASE SIZE CUS_ProdDB_Primary

Database growth over last month



Database Tablespace CUS_ProdDB_Primary

Date	Tablespace Name	Filesize (Gb)	Usedsize (Gb)	Percentage free
20-Feb-21	ABSDATA	150	125	17
	INDX	208	174	16
19-Feb-21	ABSDATA	150	125	17
	INDX	208	174	16
18-Feb-21	ABSDATA	150	125	17
	INDX	208	174	16
17-Feb-21	ABSDATA	150	125	17
	INDX	208	173	17
16-Feb-21	ABSDATA	150	125	17
	INDX	208	173	17
15-Feb-21	ABSDATA	150	125	17
	INDX	208	173	17
14-Feb-21	ABSDATA	150	125	17
	INDX	208	173	17

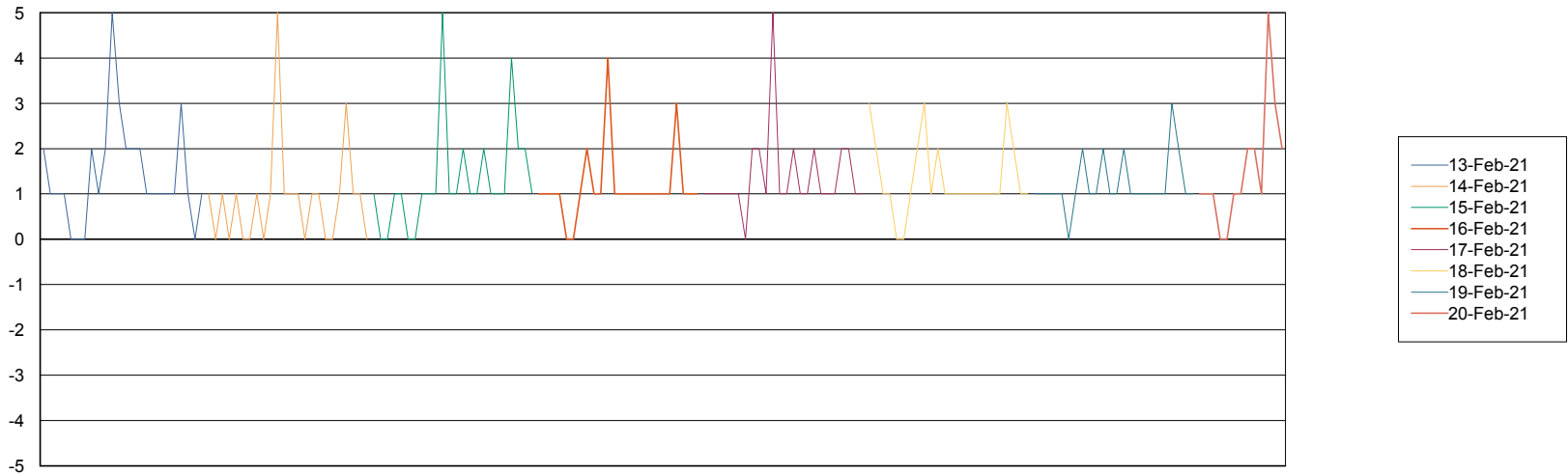
Weekly SLA Customer Report

Customer CUS Production
Database ID 84



Standby Database Health CUS Production

Recovery lag for last 7 days



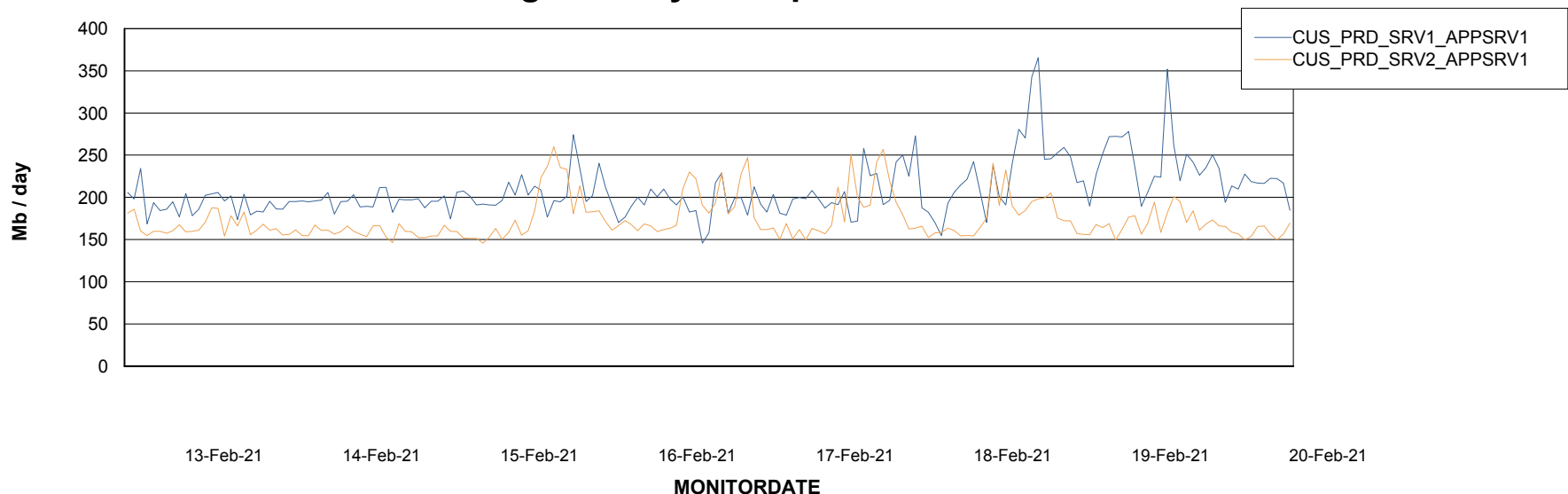
Weekly SLA Customer Report

Customer CUS Production
Database ID 84

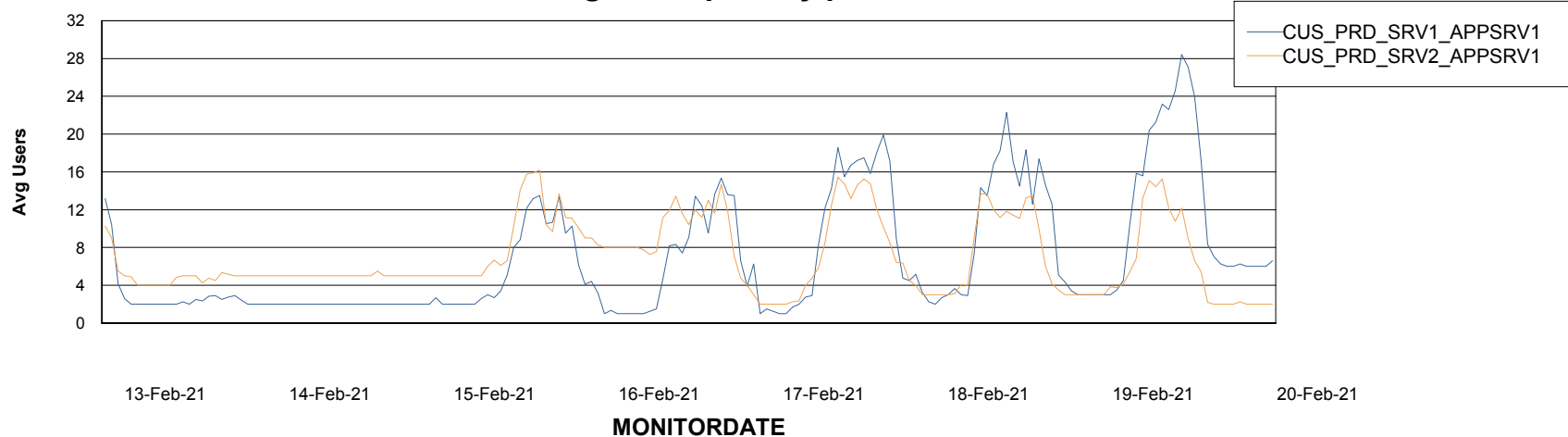


ABSSolute Application Server Services

Avg memory used per ABS Server Service



Avg users per day per ABS server



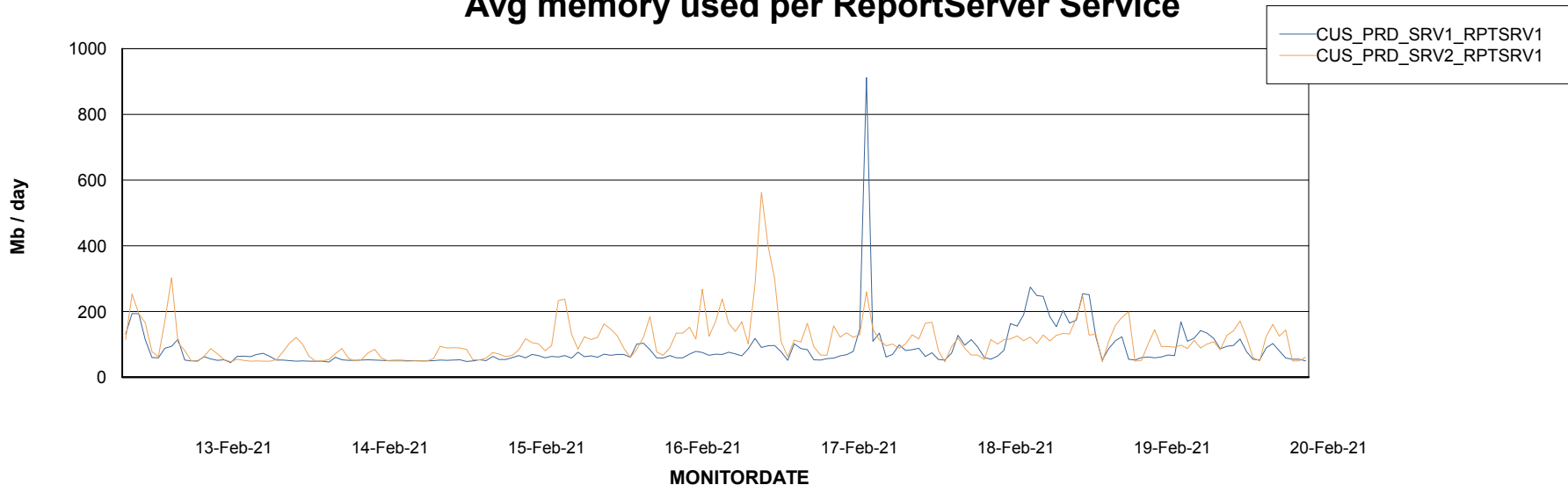
Weekly SLA Customer Report

Customer CUS Production
Database ID 84



ABSSolute Web Component Services

Avg memory used per ReportServer Service



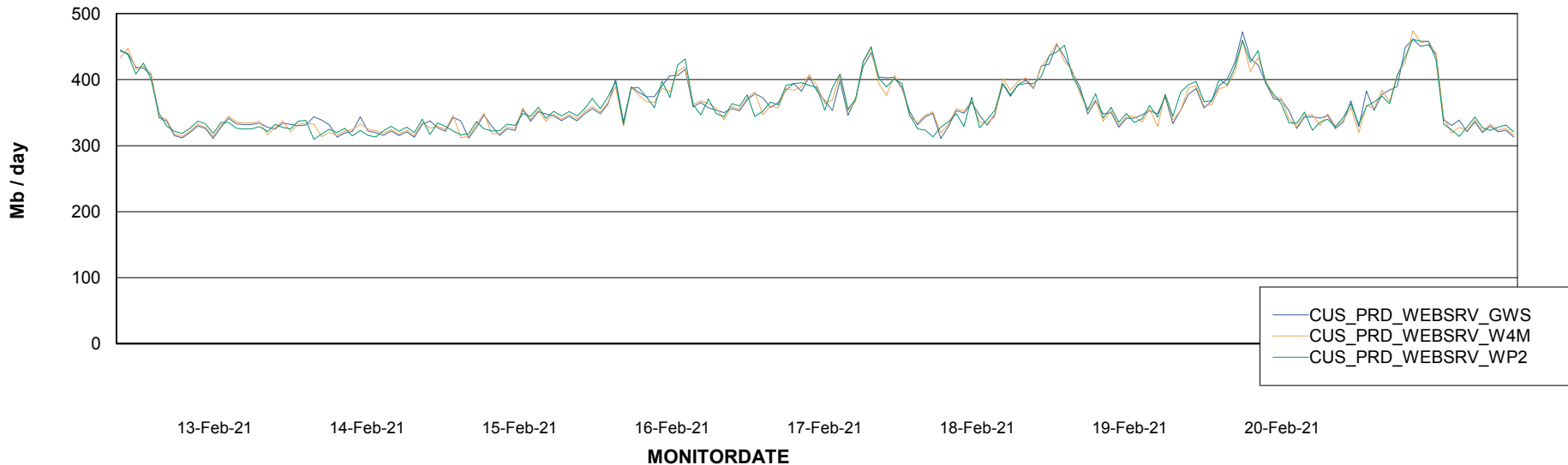
Weekly SLA Customer Report

Customer CUS Production
Database ID 84



ABSSolute Web Component Services

Avg memory used per ABS Web component



Weekly SLA Customer Report

Customer CUS Production
Database ID 84



Disaster per ABS component

