

Weekly SLA Customer Report

Customer AUJ_Production
Database ID 41



Harddisk Usage AUJ_PRD_ABS_APP1

	Free disk space on / (%)	Total disk space on / (Gb)	Used disk space on / (Gb)
06-Feb-21	17	241	190
05-Feb-21	17	241	190
04-Feb-21	17	241	190
03-Feb-21	17	241	190
02-Feb-21	17	241	190
01-Feb-21	17	241	190
31-Jan-21	17	241	190

Harddisk Usage AUJ_PRD_ABS_APP2

	Free disk space on / (%)	Total disk space on / (Gb)	Used disk space on / (Gb)
06-Feb-21	30	241	161
05-Feb-21	30	241	161
04-Feb-21	30	241	161
03-Feb-21	30	241	161
02-Feb-21	30	241	161
01-Feb-21	30	241	161
31-Jan-21	30	241	161

Weekly SLA Customer Report

Customer AUJ_Production
 Database ID 41



Harddisk Usage AUJ_PRD_ABS_APP3

	Free disk space on / (%)	Total disk space on / (Gb)	Used disk space on / (Gb)
06-Feb-21	91	247	22
05-Feb-21	91	247	22
04-Feb-21	91	247	22
03-Feb-21	91	247	22
02-Feb-21	91	247	22
01-Feb-21	91	247	22
31-Jan-21	91	247	22

Harddisk Usage AUJ_PRD_ORACLE4

	Free disk space on / (%)	Total disk space on / (Gb)	Used disk space on / (Gb)	Free disk space on /bk (%)	Total disk space on /bk (Gb)	Used disk space on /bk (Gb)	Free disk space on /data (%)	Total disk space on /data (Gb)	Used disk space on /da /data
06-Feb-21	97	534	14	43	4,436	2,417	66	4,436	1,423
05-Feb-21	97	534	14	42	4,436	2,458	66	4,436	1,423
04-Feb-21	97	534	14	42	4,436	2,456	66	4,436	1,423
03-Feb-21	97	534	14	42	4,436	2,455	66	4,436	1,423
02-Feb-21	97	534	14	42	4,436	2,437	66	4,436	1,423
01-Feb-21	97	534	14	42	4,436	2,452	66	4,436	1,423
31-Jan-21	97	534	14	42	4,436	2,442	66	4,436	1,423

Weekly SLA Customer Report

Customer AUJ_Production
Database ID 41



Harddisk Usage AUJ_PRD_ORACLE5

	Free disk space on / (%)	Total disk space on / (Gb)	Used disk space on / (Gb)	Free disk space on /bk (%)	Total disk space on /bk (Gb)	Used disk space on /bk (Gb)	Free disk space on /data (%)	Total disk space on /data (Gb)	Used disk space on /da /data
06-Feb-21	97	534	18	94	4,436	244	67	4,436	1,393
05-Feb-21	97	534	18	94	4,436	249	67	4,436	1,392
04-Feb-21	97	534	18	94	4,436	248	67	4,436	1,393
03-Feb-21	97	534	18	94	4,436	248	67	4,436	1,393
02-Feb-21	97	534	18	94	4,436	250	67	4,436	1,393
01-Feb-21	97	534	18	94	4,436	240	67	4,436	1,393
31-Jan-21	97	534	18	94	4,436	232	67	4,436	1,393

Harddisk Usage AUJ_PRD_ORACLE6

	Free disk space on / (%)	Total disk space on / (Gb)	Used disk space on / (Gb)	Free disk space on /bk (%)	Total disk space on /bk (Gb)	Used disk space on /bk (Gb)	Free disk space on /data (%)	Total disk space on /data (Gb)	Used disk space on /da /data
06-Feb-21	84	534	80	84	534	80	67	4,436	1,385
05-Feb-21	83	534	85	83	534	85	67	4,436	1,385
04-Feb-21	83	534	84	83	534	84	67	4,436	1,385
03-Feb-21	83	534	85	83	534	85	67	4,436	1,385
02-Feb-21	84	534	83	84	534	83	67	4,436	1,385
01-Feb-21	86	534	73	86	534	73	67	4,436	1,385
31-Jan-21	87	534	65	87	534	65	67	4,436	1,385

Weekly SLA Customer Report

Customer AUJ_Production
Database ID 41



Harddisk Usage AUJ_PRD_ORACLE_BI1

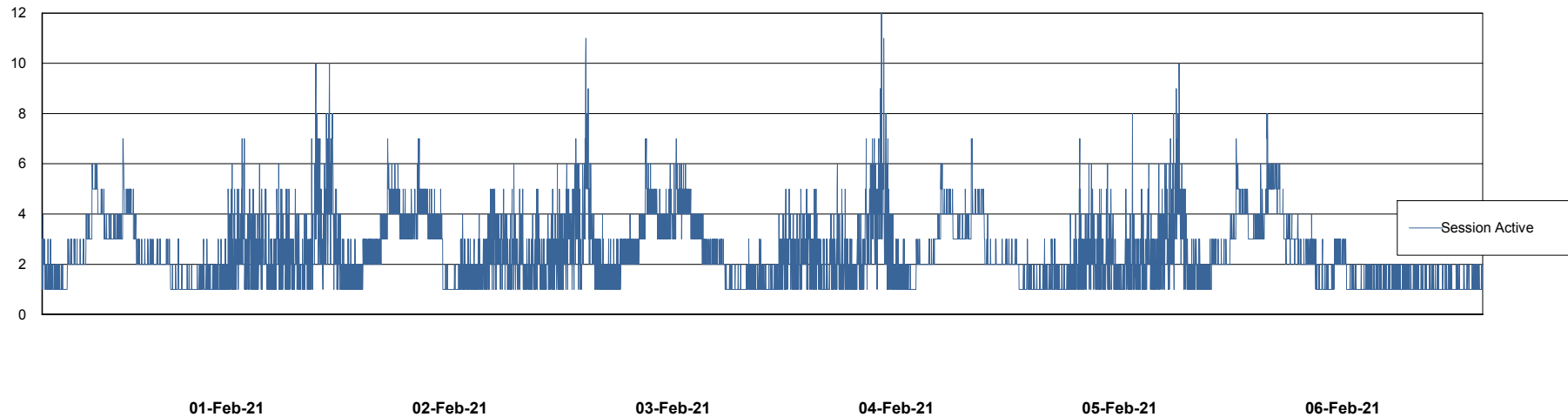
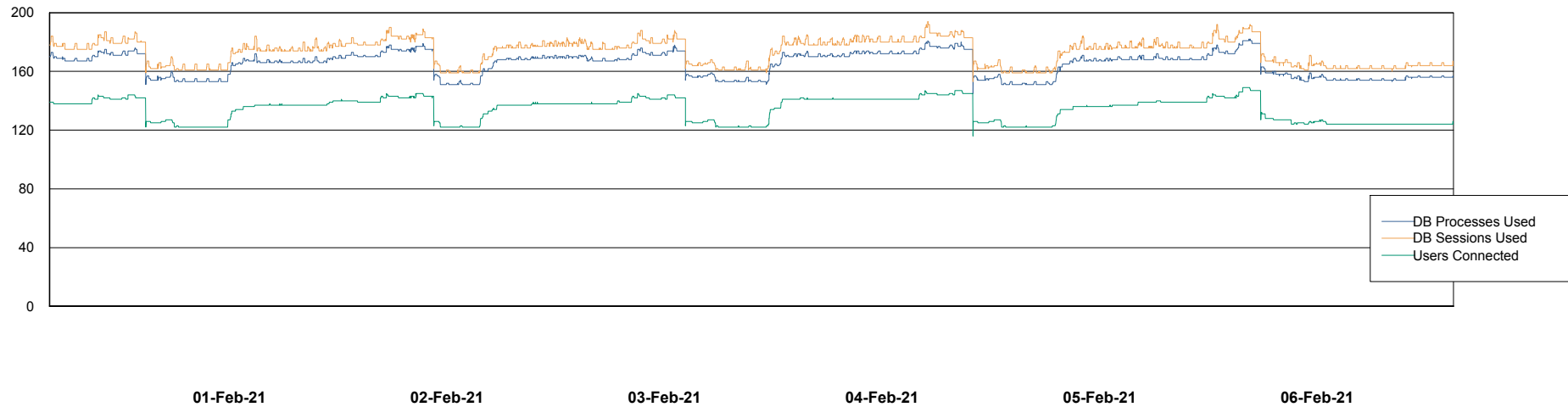
	Free disk space on / (%)	Total disk space on / (Gb)	Used disk space on / (Gb)
06-Feb-21	25	526	372
05-Feb-21	26	526	369
04-Feb-21	26	526	369
03-Feb-21	26	526	369
02-Feb-21	26	526	368
01-Feb-21	26	526	368
31-Jan-21	26	526	371

Weekly SLA Customer Report

Customer AUJ_Production
Database ID 41



Database Performance AUJ_DB4_Primary

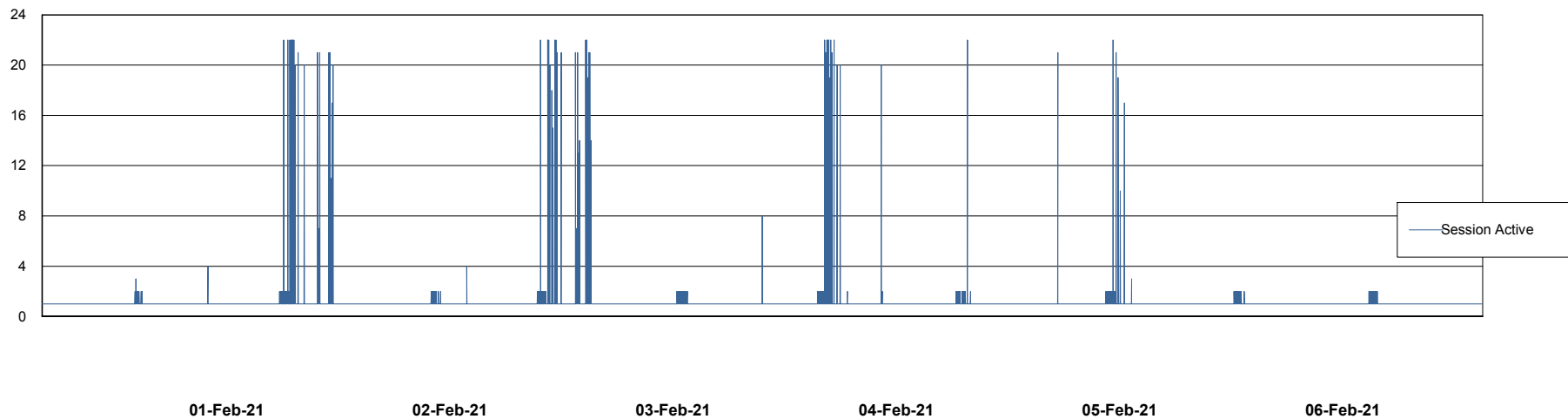
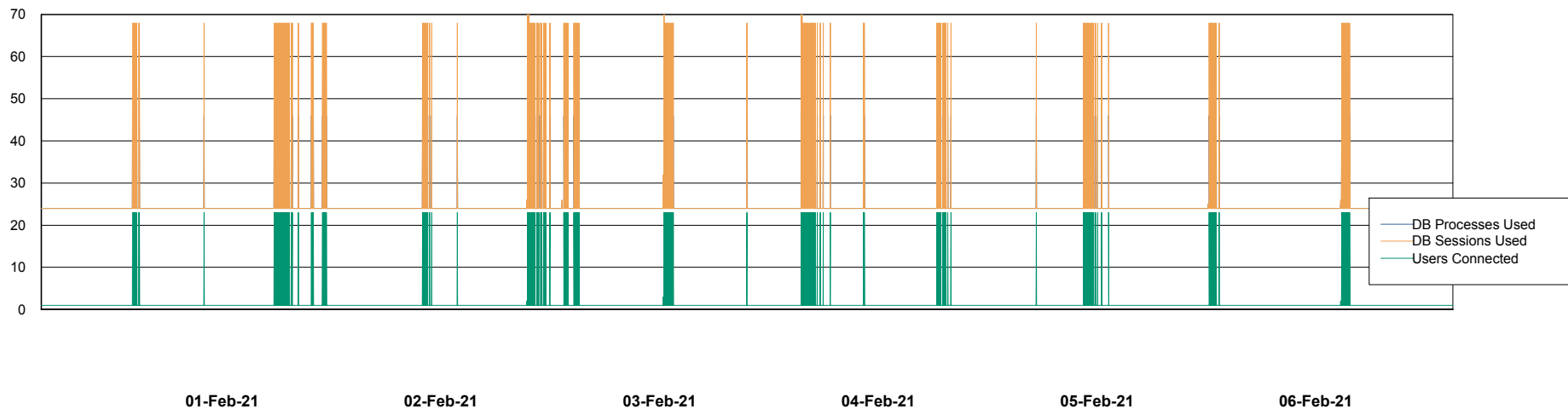


Weekly SLA Customer Report

Customer AUJ_Production
Database ID 41



Database Performance AUJ_DB5_Standby

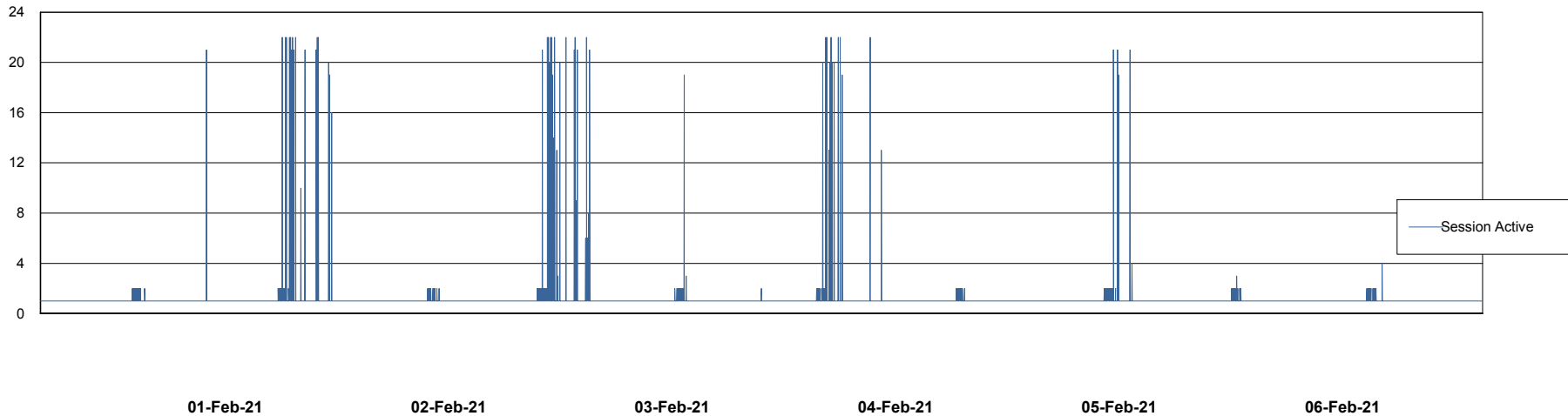
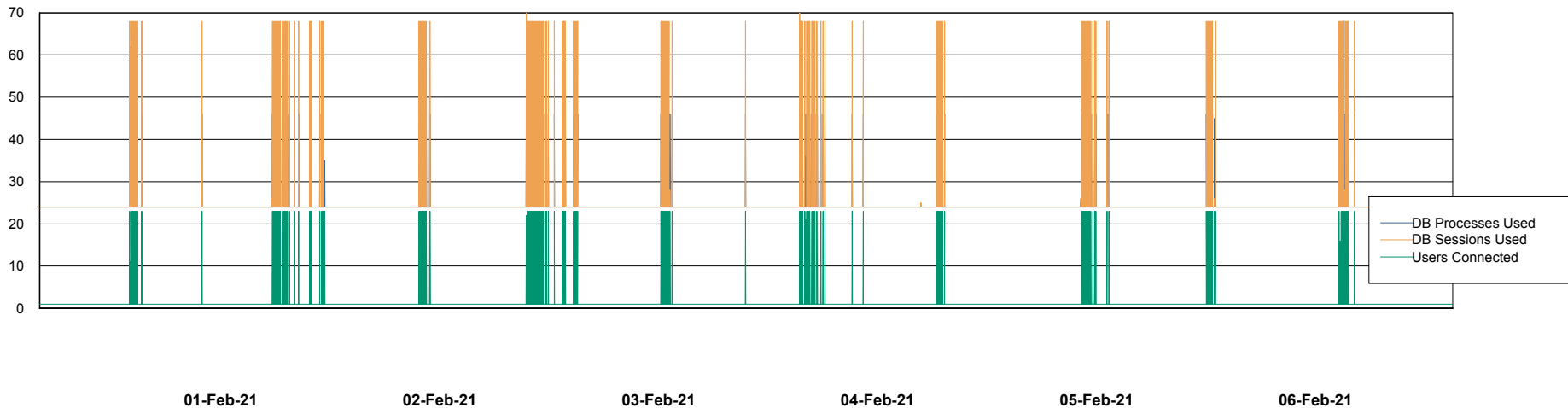


Weekly SLA Customer Report

Customer AUJ_Production
Database ID 41



Database Performance AUJ_DB6_Standby2

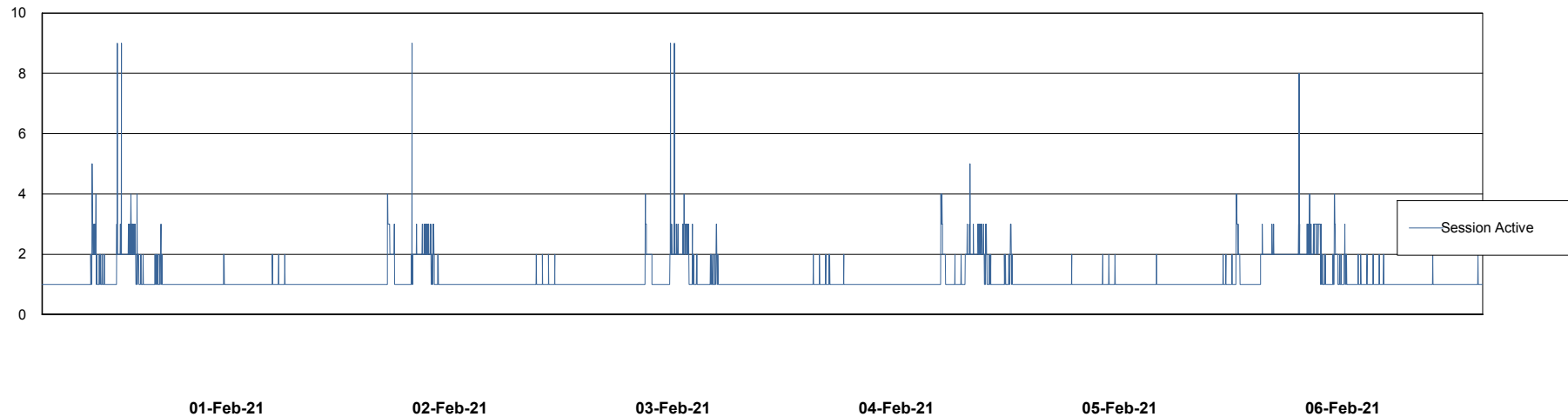
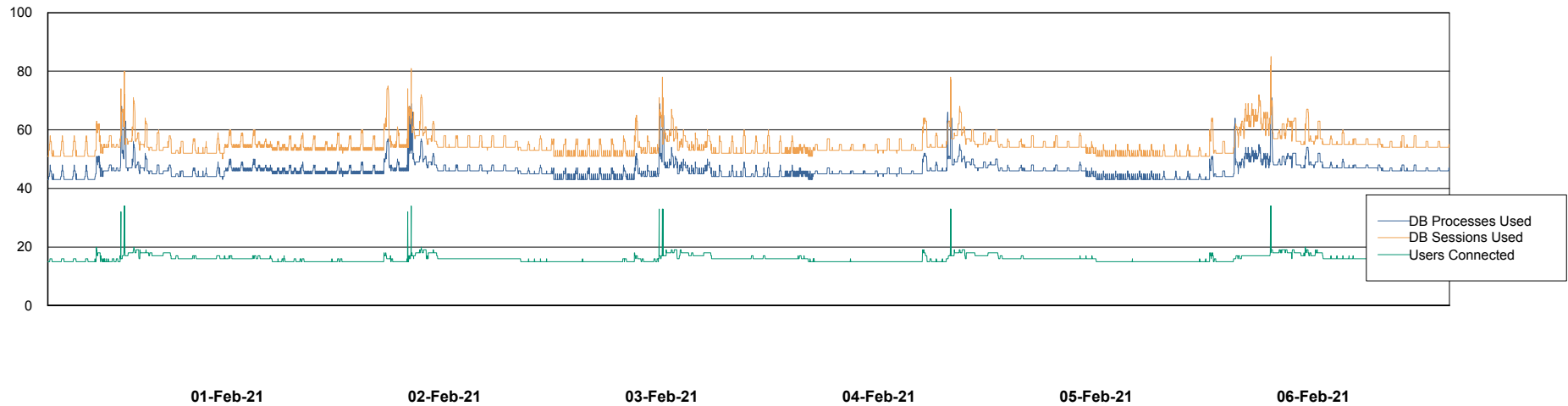


Weekly SLA Customer Report

Customer AUJ_Production
Database ID 41



Database Performance AUJDB_BI

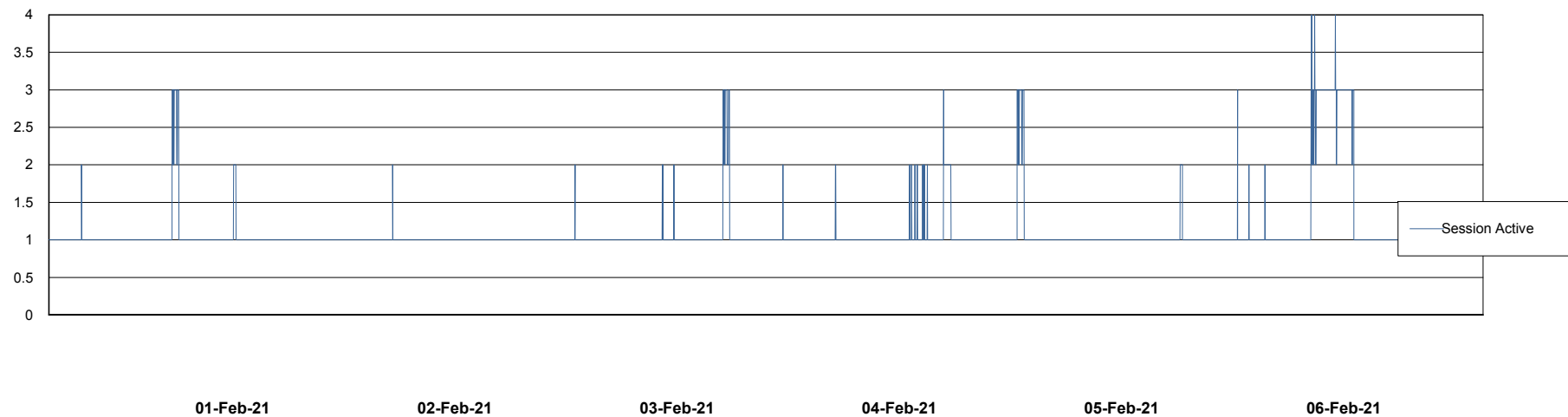
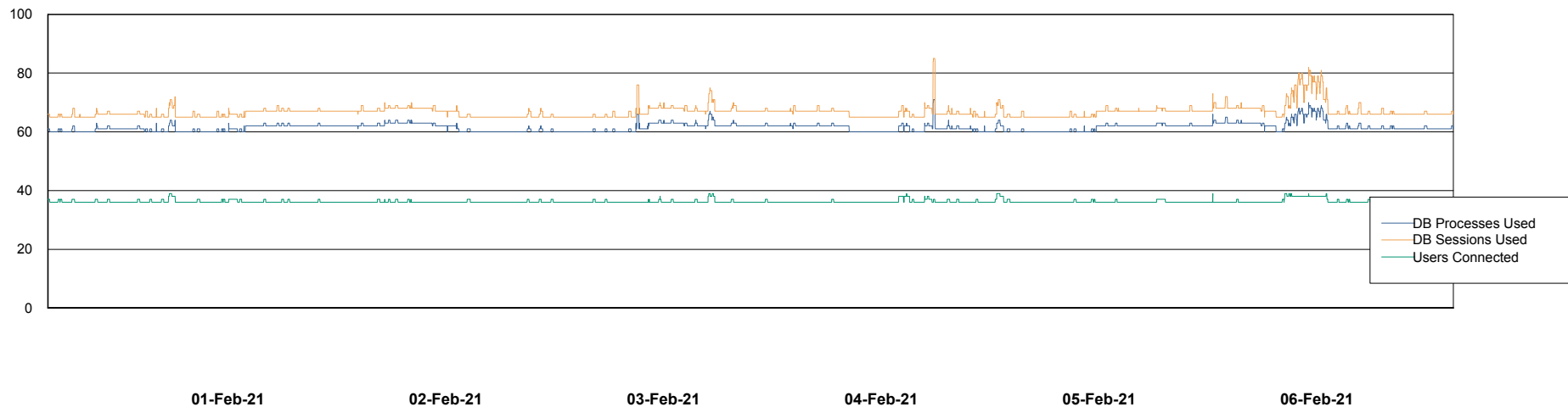


Weekly SLA Customer Report

Customer AUJ_Production
Database ID 41



Database Performance AUJDB_BI_TS1



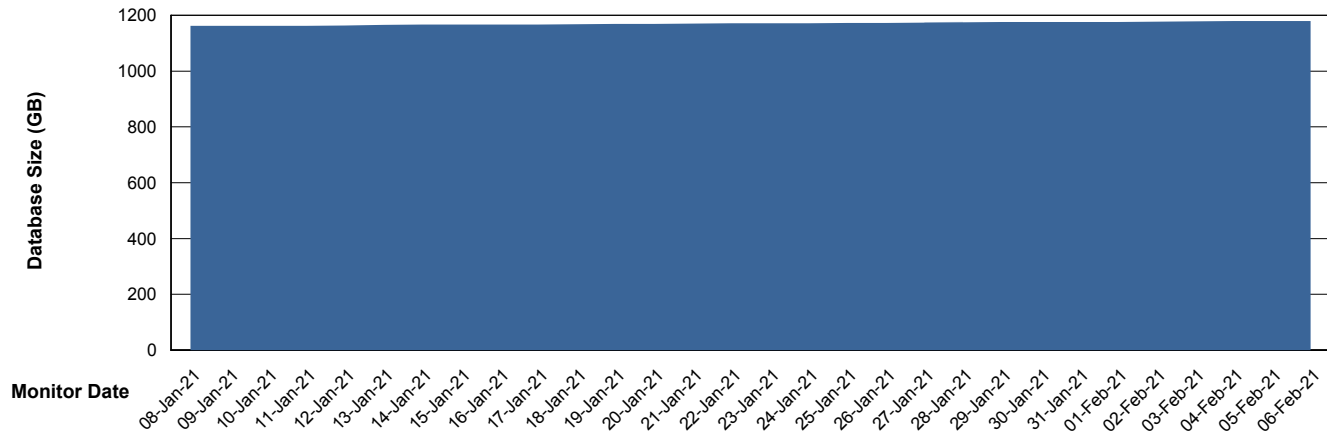
Weekly SLA Customer Report

Customer AUJ_Production
Database ID 41



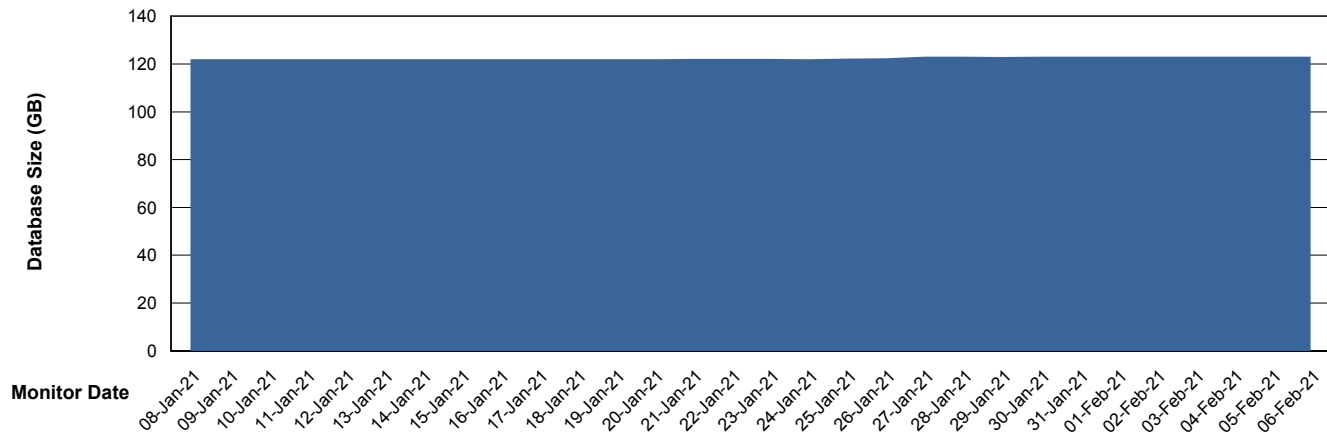
DATABASE SIZE AUJ_DB4_Primary

Database growth over last month



DATABASE SIZE AUJDB_BI

Database growth over last month



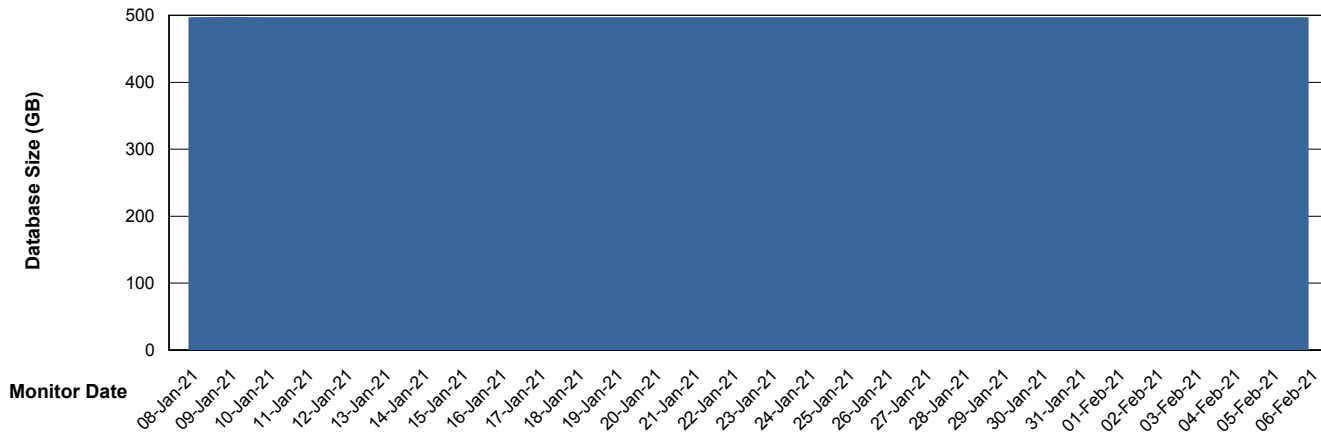
Weekly SLA Customer Report

Customer AUJ_Production
Database ID 41



DATABASE SIZE AUJDB_BI_TS1

Database growth over last month



Weekly SLA Customer Report

Customer AUJ_Production
 Database ID 41



Database Tablespace AUJ_DB4_Primary

Date	Tablespace Name	Filesize (Gb)	Usedsize (Gb)	Percentage free
06-Feb-21	ABSDATA	562	490	13
	INDX	766	688	10
05-Feb-21	ABSDATA	562	490	13
	INDX	766	688	10
04-Feb-21	ABSDATA	562	490	13
	INDX	766	688	10
03-Feb-21	ABSDATA	562	490	13
	INDX	766	687	10
02-Feb-21	ABSDATA	562	489	13
	INDX	766	686	10
01-Feb-21	ABSDATA	562	489	13
	INDX	766	686	10
31-Jan-21	ABSDATA	562	489	13
	INDX	766	685	11

Weekly SLA Customer Report

Customer AUJ_Production
 Database ID 41



Database Tablespace AUJDB_BI

Date	Tablespace Name	Filesize (Gb)	Usedsize (Gb)	Percentage free
06-Feb-21	ABSDATA	113	98	13
	INDX	68	20	71
05-Feb-21	ABSDATA	113	98	13
	INDX	68	20	71
04-Feb-21	ABSDATA	113	98	13
	INDX	68	20	71
03-Feb-21	ABSDATA	113	98	13
	INDX	68	20	71
02-Feb-21	ABSDATA	113	98	13
	INDX	68	20	71
01-Feb-21	ABSDATA	113	98	13
	INDX	68	20	71
31-Jan-21	ABSDATA	113	98	13
	INDX	68	20	71

Weekly SLA Customer Report

Customer AUJ_Production
 Database ID 41



Database Tablespace AUJDB_BI_TS1

Date	Tablespace Name	Filesize (Gb)	Usedsize (Gb)	Percentage free
06-Feb-21	ABSDATA	330	299	9
	INDX	266	115	57
05-Feb-21	ABSDATA	330	299	9
	INDX	266	115	57
04-Feb-21	ABSDATA	330	299	9
	INDX	266	115	57
03-Feb-21	ABSDATA	330	299	9
	INDX	266	115	57
02-Feb-21	ABSDATA	330	299	9
	INDX	266	115	57
01-Feb-21	ABSDATA	330	299	9
	INDX	266	115	57
31-Jan-21	ABSDATA	330	299	9
	INDX	266	115	57

BI Status and last ETL error for AUJDB_BI

	Sun 31/1/2021	Mon 1/2/2021	Tue 2/2/2021	Wed 3/2/2021	Thu 4/2/2021	Fri 5/2/2021	Sat 6/2/2021
ABS DataWarehouse ETL Health	OK	OK	OK	OK	OK	OK	OK
ABS DWHStaging ETL Health	OK	OK	OK	OK	OK	OK	OK

BI Status and last ETL error for AUJDB_BI_TS1

	Sun 31/1/2021	Mon 1/2/2021	Tue 2/2/2021	Wed 3/2/2021	Thu 4/2/2021	Fri 5/2/2021	Sat 6/2/2021
ABS DataWarehouse ETL Health	Not OK	Not OK	Not OK	Not OK	Not OK	Not OK	Not OK
ABS DWHStaging ETL Health	OK	OK	OK	OK	OK	OK	OK

Weekly SLA Customer Report

Customer AUJ_Production
Database ID 41

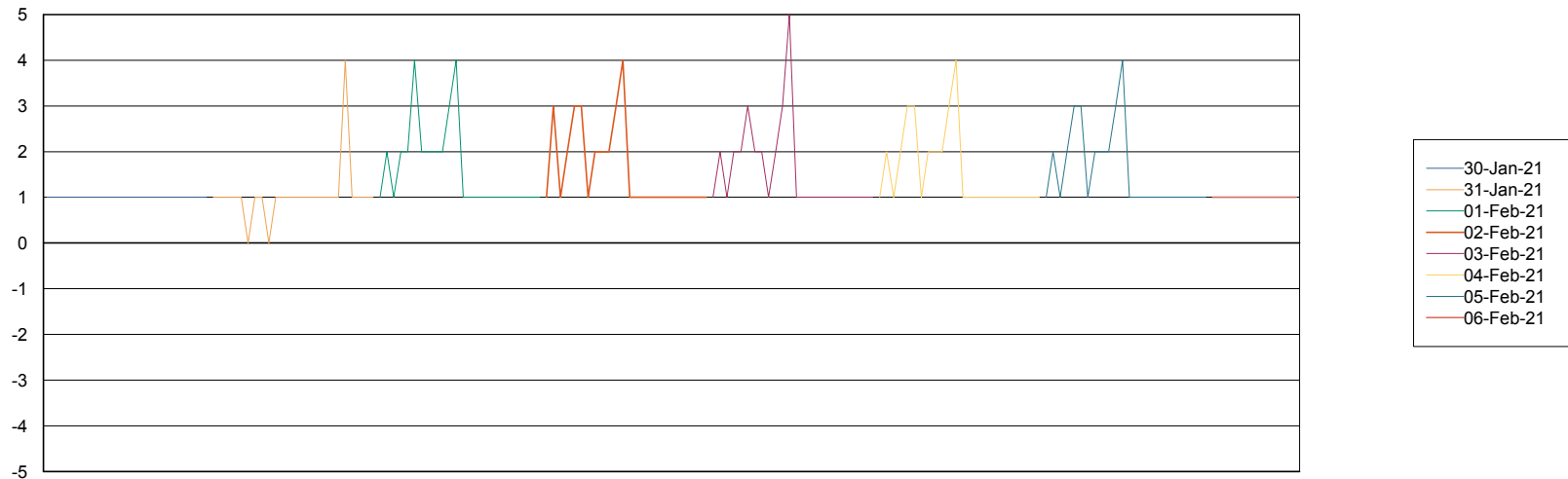


BI last ETL error for AUJDB_BI_TS1

Sun, 31-01-2021	ORA-01652: unable to extend temp segment by 128 in tablespace TEMP
Wed, 3-02-2021	ORA-01652: unable to extend temp segment by 128 in tablespace TEMP
Thu, 4-02-2021	ORA-01652: unable to extend temp segment by 128 in tablespace TEMP
Sat, 6-02-2021	ORA-01652: unable to extend temp segment by 128 in tablespace TEMP
Mon, 1-02-2021	ORA-01652: unable to extend temp segment by 128 in tablespace TEMP
Tue, 2-02-2021	ORA-01652: unable to extend temp segment by 128 in tablespace TEMP
Fri, 5-02-2021	ORA-01652: unable to extend temp segment by 128 in tablespace TEMP

Standby Database Health AUJ_Production

Recovery lag for last 7 days



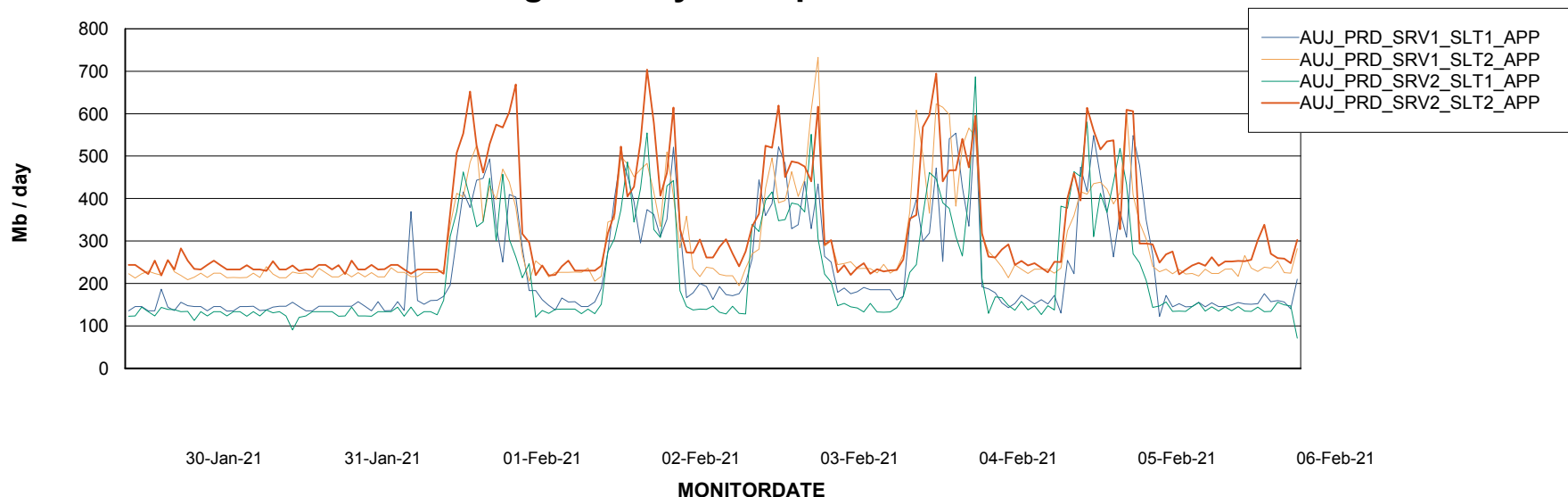
Weekly SLA Customer Report

Customer AUJ_Production
Database ID 41

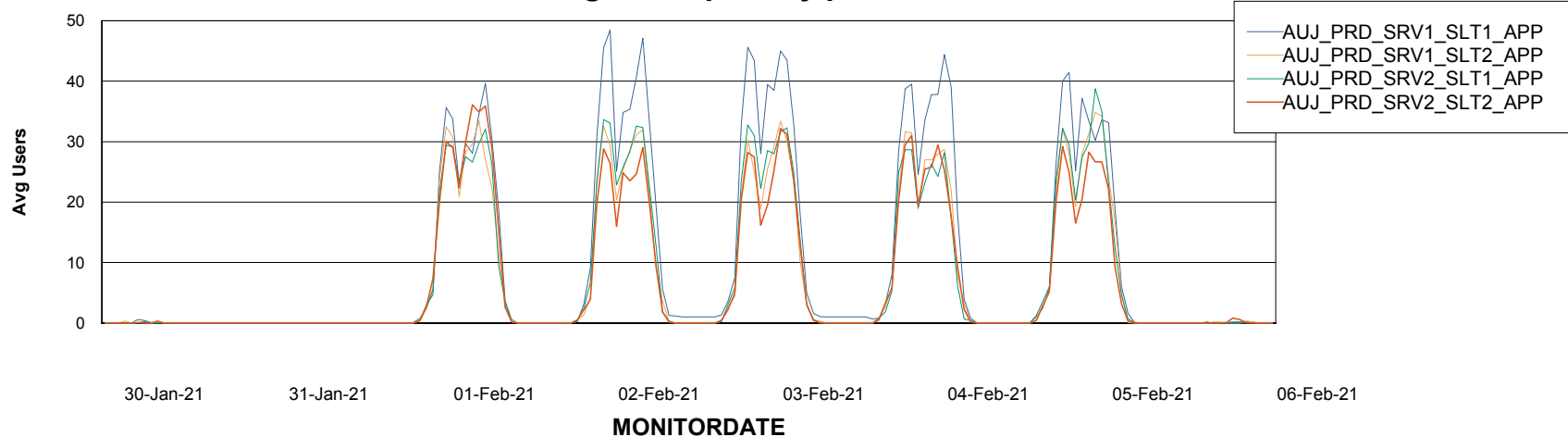


ABSSolute Application Server Services

Avg memory used per ABS Server Service



Avg users per day per ABS server



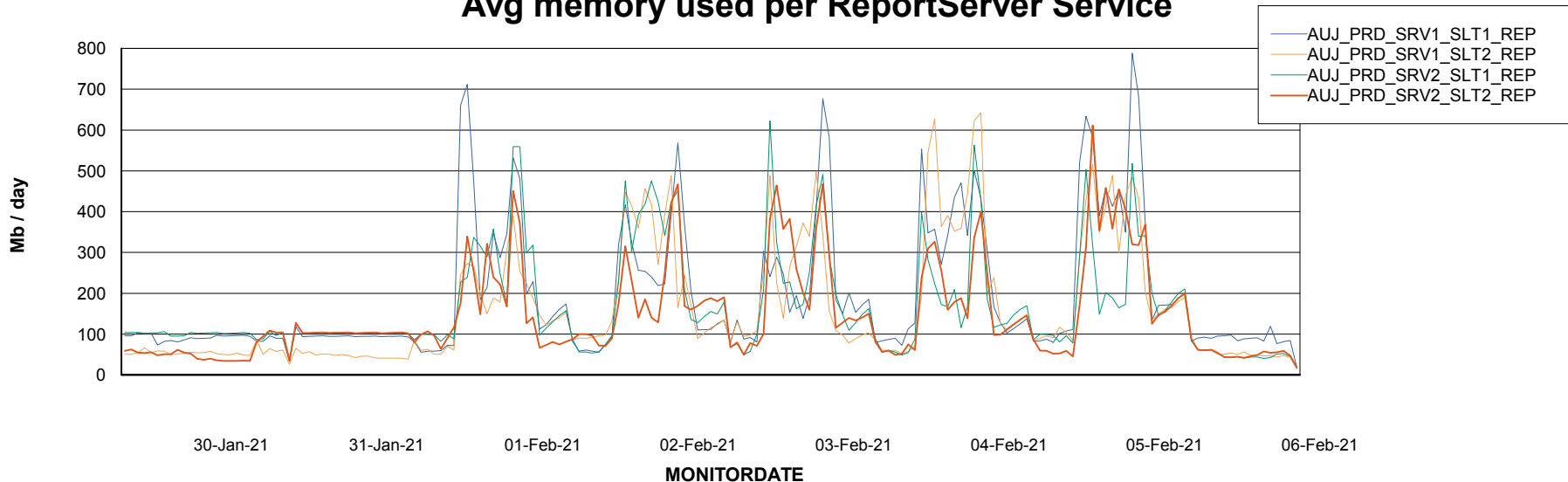
Weekly SLA Customer Report

Customer AUJ_Production
Database ID 41



ABSolute Application ReportServer Services

Avg memory used per ReportServer Service



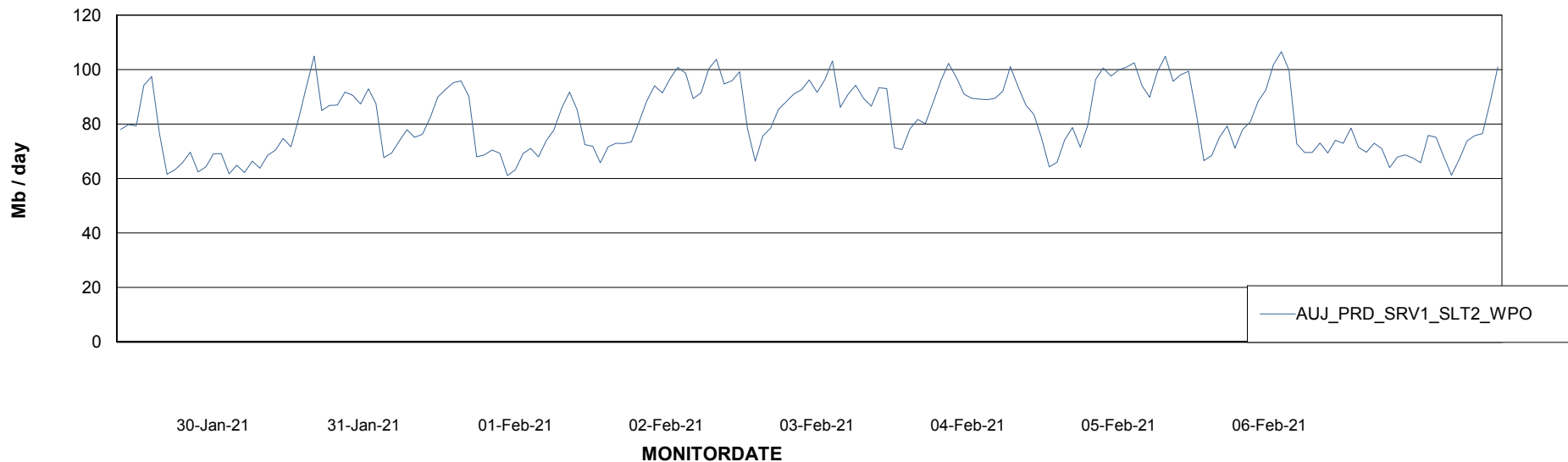
Weekly SLA Customer Report

Customer AUJ_Production
Database ID 41



ABSSolute Web Component Services

Avg memory used per ABS Web component



Weekly SLA Customer Report

Customer AUJ_Production
Database ID 41



Disaster per ABS component

