

Weekly SLA Customer Report

Customer AUJ_Production
Database ID 41



Harddisk Usage AUJ_PRD_ABS_APP1

	Free disk space on / (%)	Total disk space on / (Gb)	Used disk space on / (Gb)
16-Jan-21	10	241	206
15-Jan-21	10	241	205
14-Jan-21	10	241	205
13-Jan-21	10	241	205
12-Jan-21	10	241	205
11-Jan-21	10	241	205
10-Jan-21	10	241	205

Harddisk Usage AUJ_PRD_ABS_APP2

	Free disk space on / (%)	Total disk space on / (Gb)	Used disk space on / (Gb)
16-Jan-21	30	241	160
15-Jan-21	30	241	160
14-Jan-21	30	241	160
13-Jan-21	30	241	160
12-Jan-21	30	241	160
11-Jan-21	30	241	160
10-Jan-21	30	241	160

Weekly SLA Customer Report

Customer AUJ_Production
 Database ID 41



Harddisk Usage AUJ_PRD_ABS_APP3

	Free disk space on / (%)	Total disk space on / (Gb)	Used disk space on / (Gb)
16-Jan-21	91	247	22
15-Jan-21	91	247	22
14-Jan-21	91	247	22
13-Jan-21	91	247	22
12-Jan-21	91	247	22
11-Jan-21	91	247	22
10-Jan-21	91	247	22

Harddisk Usage AUJ_PRD_ORACLE4

	Free disk space on / (%)	Total disk space on / (Gb)	Used disk space on / (Gb)	Free disk space on /bk (%)	Total disk space on /bk (Gb)	Used disk space on /bk (Gb)	Free disk space on /data (%)	Total disk space on /data (Gb)	Used disk space on /da /data
16-Jan-21	97	534	13	43	4,436	2,391	66	4,436	1,423
15-Jan-21	97	534	13	42	4,436	2,429	66	4,436	1,423
14-Jan-21	97	534	13	42	4,436	2,430	66	4,436	1,423
13-Jan-21	97	534	13	42	4,436	2,425	66	4,436	1,423
12-Jan-21	97	534	13	42	4,436	2,427	66	4,436	1,423
11-Jan-21	97	534	13	43	4,436	2,420	66	4,436	1,423
10-Jan-21	97	534	13	43	4,436	2,414	66	4,436	1,423

Weekly SLA Customer Report

Customer AUJ_Production
Database ID 41



Harddisk Usage AUJ_PRD_ORACLE5

	Free disk space on / (%)	Total disk space on / (Gb)	Used disk space on / (Gb)	Free disk space on /bk (%)	Total disk space on /bk (Gb)	Used disk space on /bk (Gb)	Free disk space on /data (%)	Total disk space on /data (Gb)	Used disk space on /da /data
16-Jan-21	97	534	18	94	4,436	239	67	4,436	1,393
15-Jan-21	97	534	18	94	4,436	244	67	4,436	1,393
14-Jan-21	97	534	18	94	4,436	245	67	4,436	1,393
13-Jan-21	97	534	18	94	4,436	240	67	4,436	1,393
12-Jan-21	97	534	18	94	4,436	241	67	4,436	1,393
11-Jan-21	97	534	18	94	4,436	232	67	4,436	1,393
10-Jan-21	97	534	18	95	4,436	228	67	4,436	1,393

Harddisk Usage AUJ_PRD_ORACLE6

	Free disk space on / (%)	Total disk space on / (Gb)	Used disk space on / (Gb)	Free disk space on /bk (%)	Total disk space on /bk (Gb)	Used disk space on /bk (Gb)	Free disk space on /data (%)	Total disk space on /data (Gb)	Used disk space on /da /data
16-Jan-21	85	534	74	85	534	74	67	4,436	1,385
15-Jan-21	84	534	79	84	534	79	67	4,436	1,385
14-Jan-21	84	534	80	84	534	80	67	4,436	1,385
13-Jan-21	85	534	76	85	534	76	67	4,436	1,385
12-Jan-21	85	534	76	85	534	76	67	4,436	1,385
11-Jan-21	87	534	64	87	534	64	67	4,436	1,385
10-Jan-21	88	534	60	88	534	60	67	4,436	1,385

Weekly SLA Customer Report

Customer AUJ_Production
Database ID 41



Harddisk Usage AUJ_PRD_ORACLE_BI1

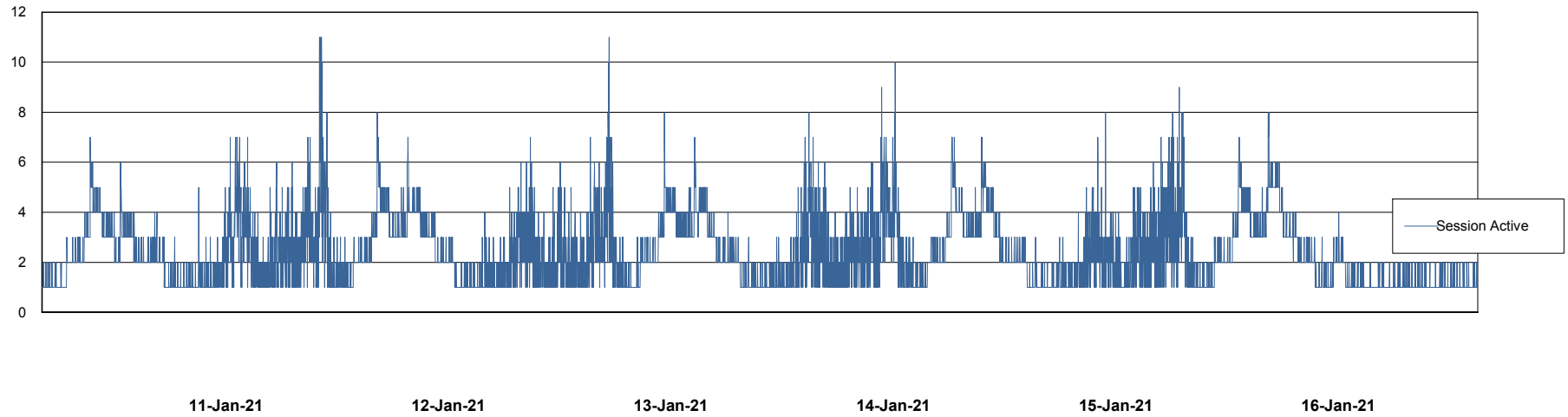
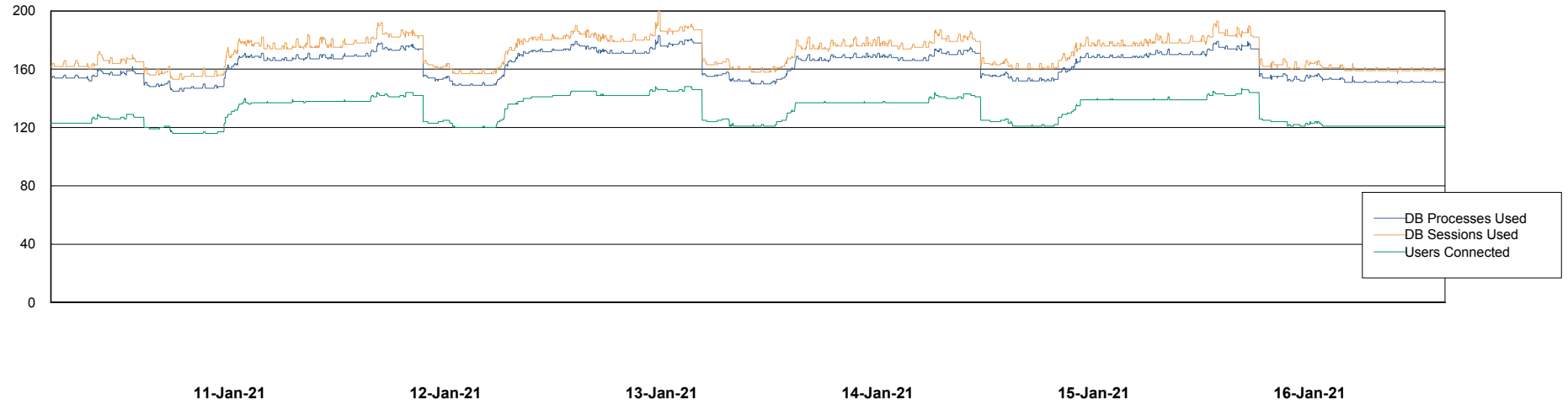
	Free disk space on / (%)	Total disk space on / (Gb)	Used disk space on / (Gb)
16-Jan-21	25	526	372
15-Jan-21	26	526	369
14-Jan-21	26	526	368
13-Jan-21	26	526	368
12-Jan-21	26	526	369
11-Jan-21	26	526	368
10-Jan-21	26	526	371

Weekly SLA Customer Report

Customer AUJ_Production
Database ID 41



Database Performance AUJ_DB4_Primary

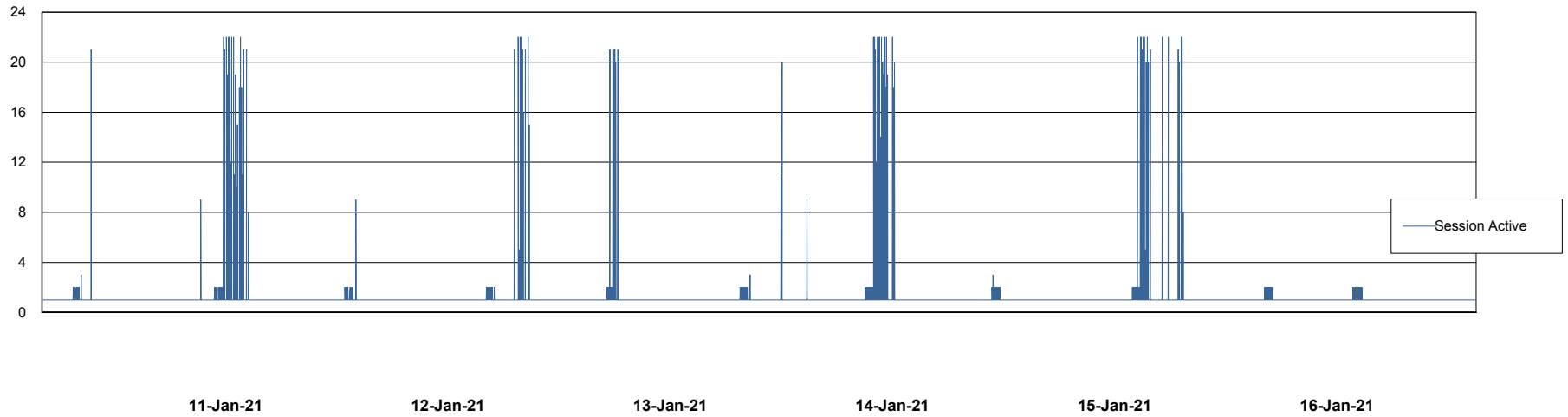
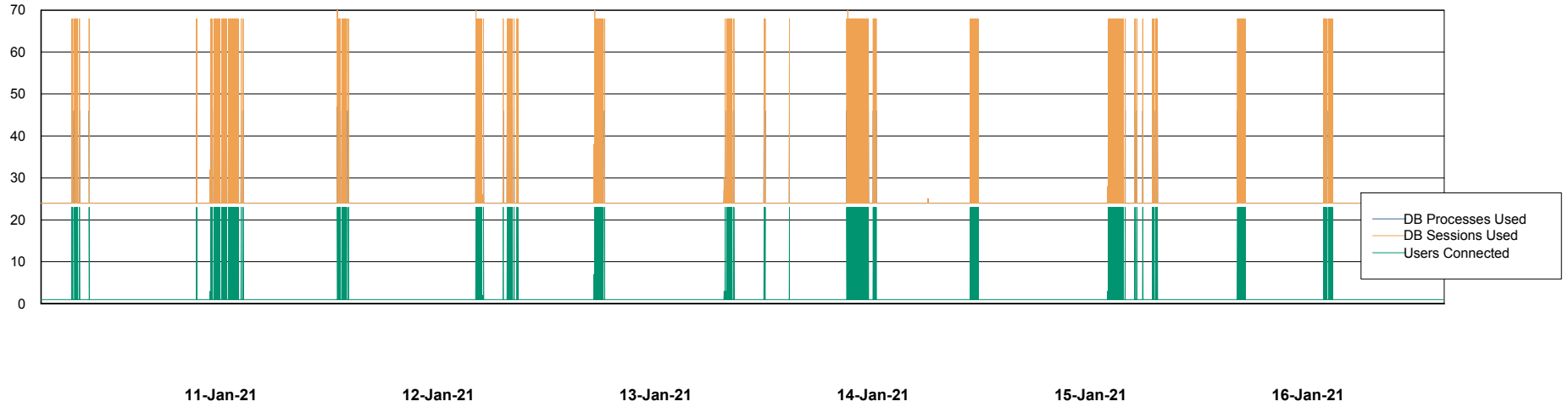


Weekly SLA Customer Report

Customer AUJ_Production
Database ID 41



Database Performance AUJ_DB5_Standby

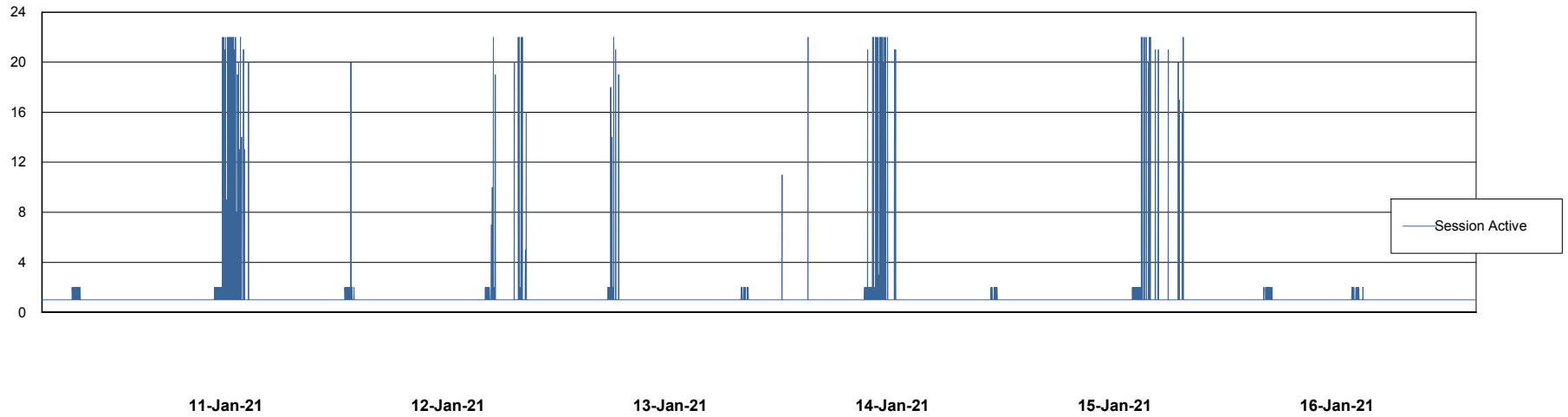
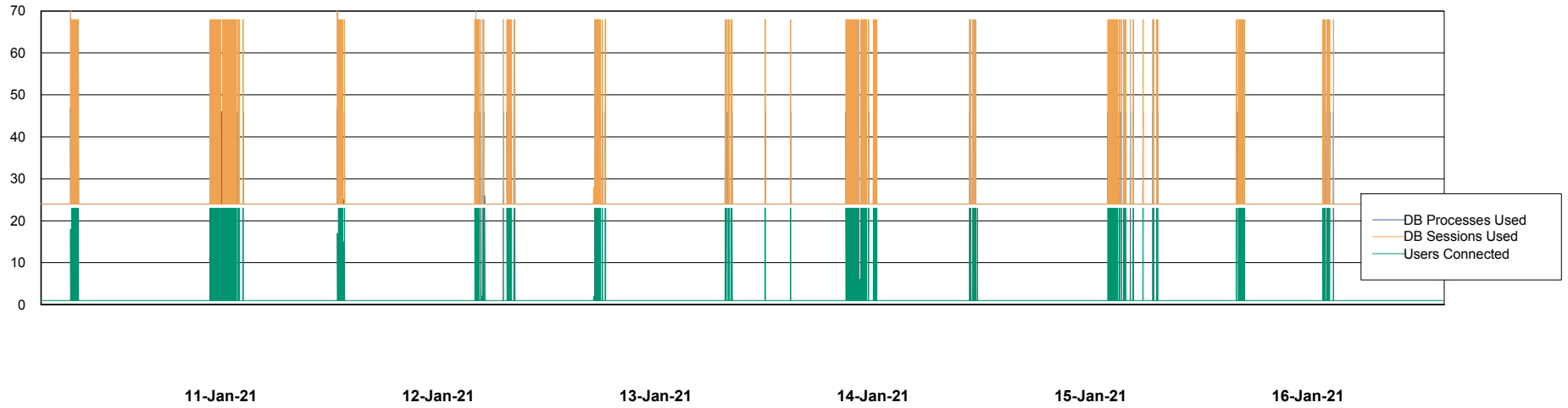


Weekly SLA Customer Report

Customer AUJ_Production
Database ID 41



Database Performance AUJ_DB6_Standby2

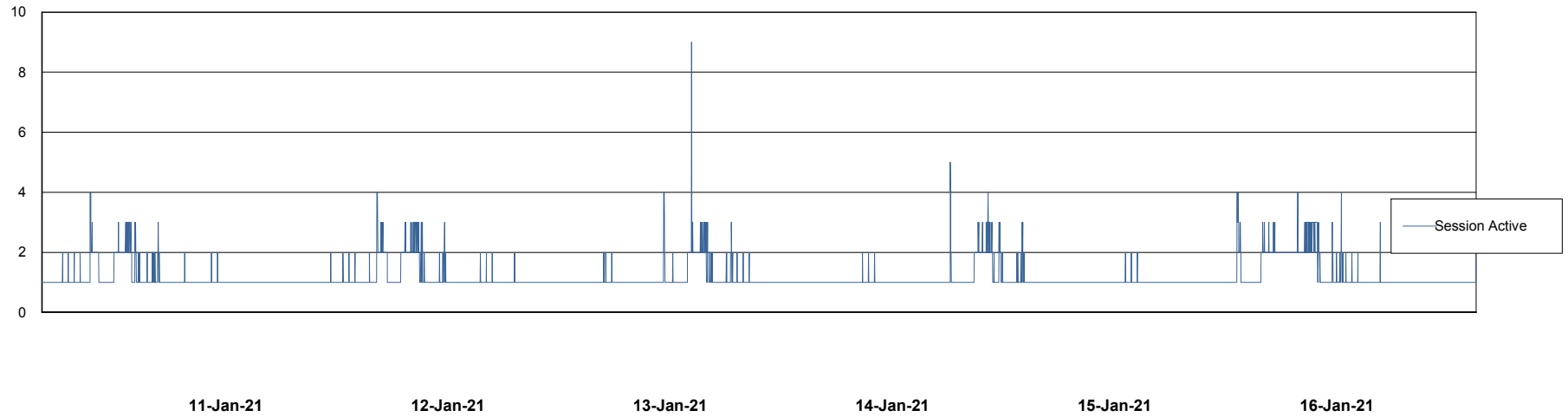
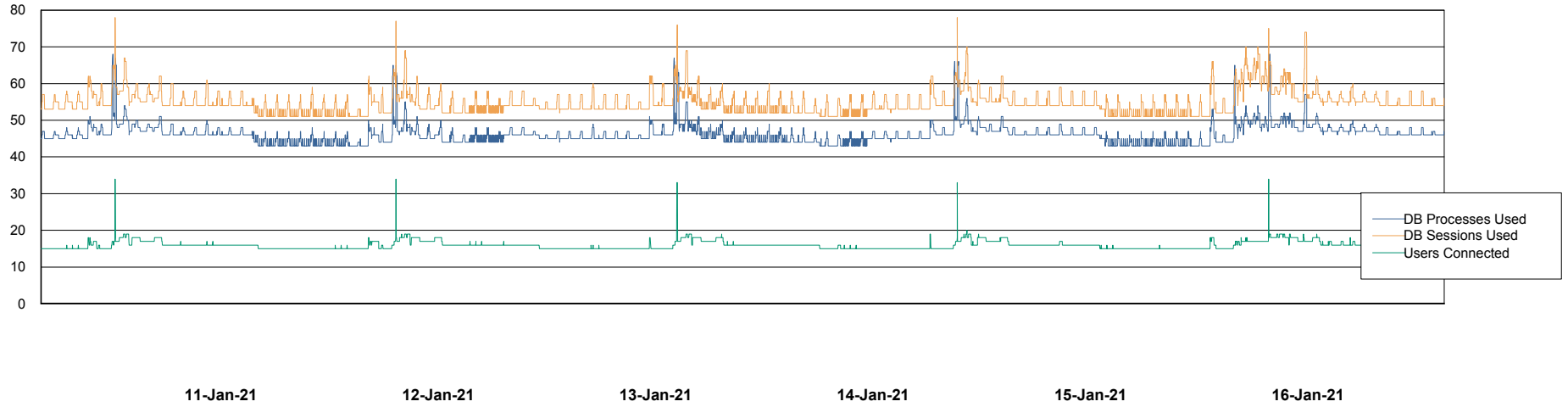


Weekly SLA Customer Report

Customer AUJ_Production
Database ID 41



Database Performance AUJDB_BI

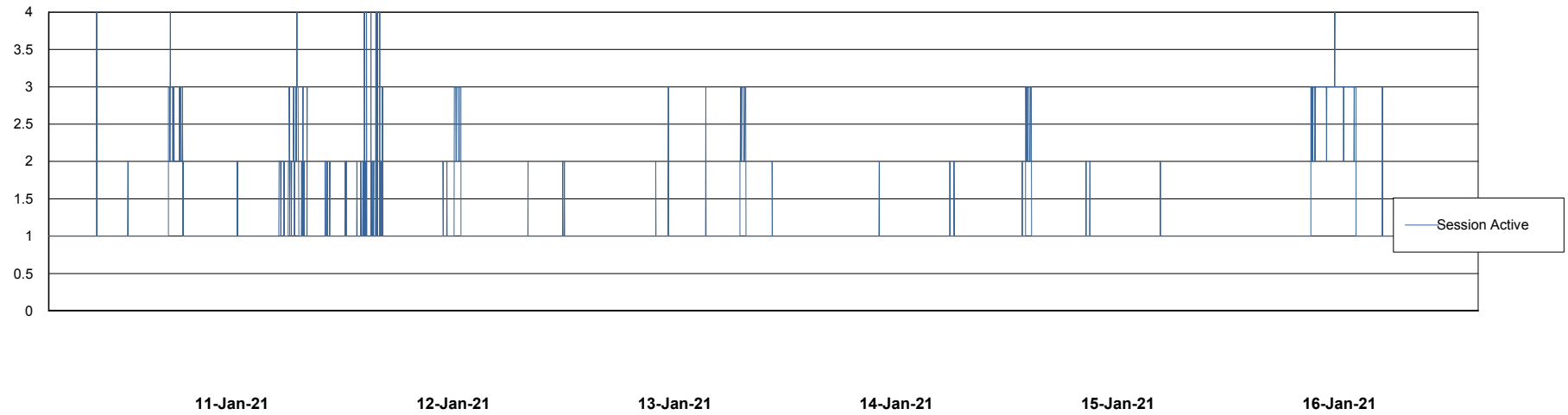
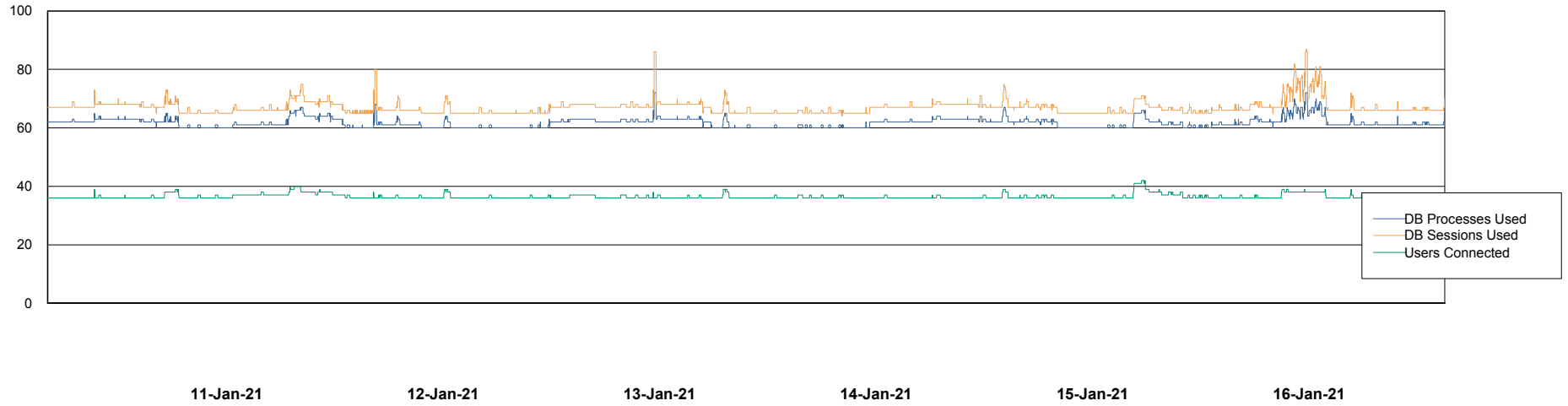


Weekly SLA Customer Report

Customer AUJ_Production
Database ID 41



Database Performance AUJDB_BI_TS1



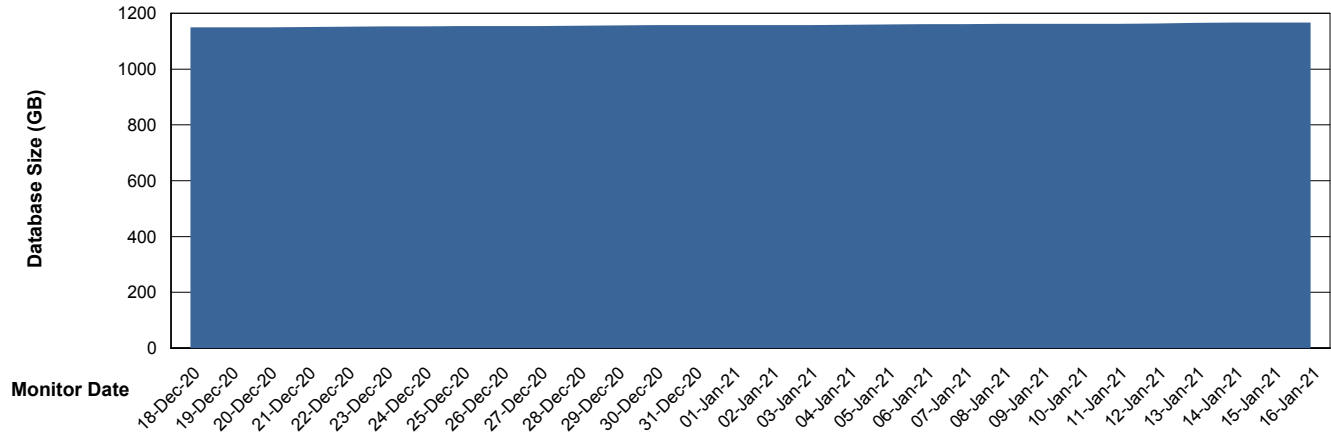
Weekly SLA Customer Report

Customer AUJ_Production
Database ID 41



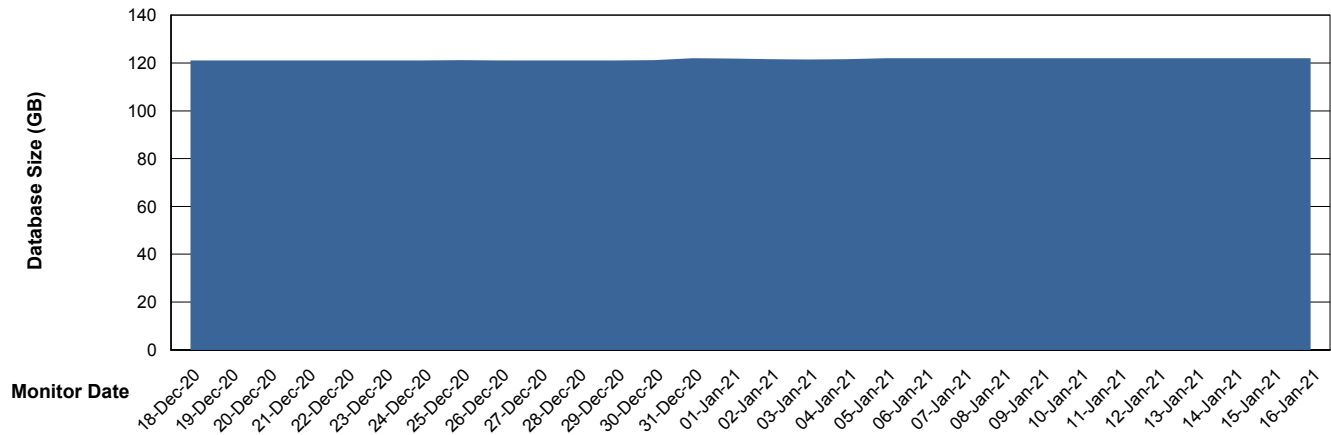
DATABASE SIZE AUJ_DB4_Primary

Database growth over last month



DATABASE SIZE AUJDB_BI

Database growth over last month



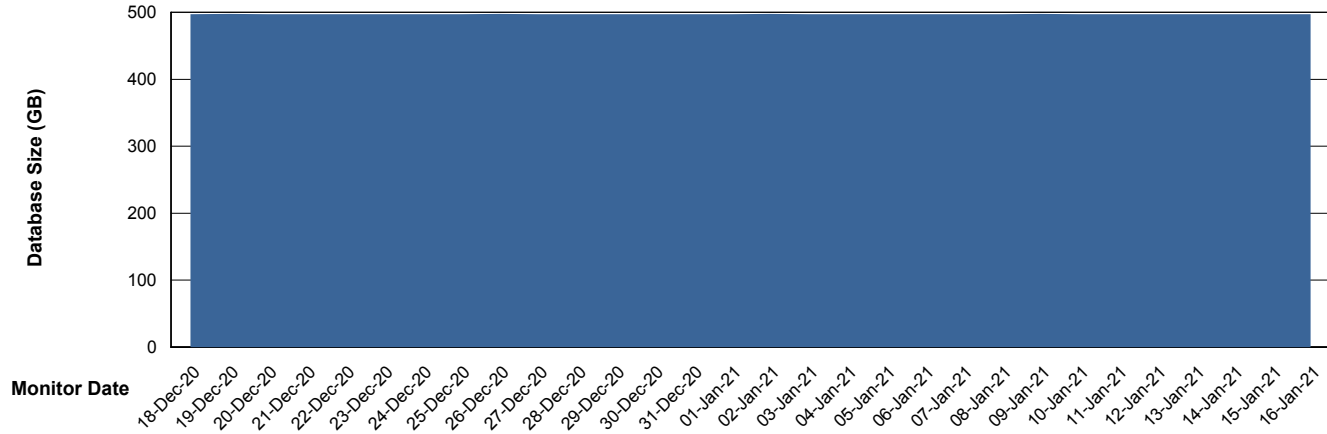
Weekly SLA Customer Report

Customer AUJ_Production
Database ID 41



DATABASE SIZE AUJDB_BI_TS1

Database growth over last month



Weekly SLA Customer Report

Customer AUJ_Production
Database ID 41



Database Tablespace AUJ_DB4_Primary

Date	Tablespace Name	Filesize (Gb)	Usedsize (Gb)	Percentage free
16-Jan-21	ABSDATA	562	485	14
	INDX	766	680	11
15-Jan-21	ABSDATA	562	485	14
	INDX	766	680	11
14-Jan-21	ABSDATA	562	485	14
	INDX	766	680	11
13-Jan-21	ABSDATA	562	484	14
	INDX	766	680	11
12-Jan-21	ABSDATA	562	484	14
	INDX	766	678	11
11-Jan-21	ABSDATA	562	484	14
	INDX	766	677	12
10-Jan-21	ABSDATA	562	483	14
	INDX	766	677	12

Weekly SLA Customer Report

Customer AUJ_Production
 Database ID 41



Database Tablespace AUJDB_BI

Date	Tablespace Name	Filesize (Gb)	Usedsize (Gb)	Percentage free
16-Jan-21	ABSDATA	113	98	13
	INDX	68	20	71
15-Jan-21	ABSDATA	113	98	13
	INDX	68	20	71
14-Jan-21	ABSDATA	113	98	13
	INDX	68	19	72
13-Jan-21	ABSDATA	113	97	14
	INDX	68	19	72
12-Jan-21	ABSDATA	113	97	14
	INDX	68	19	72
11-Jan-21	ABSDATA	113	97	14
	INDX	68	19	72
10-Jan-21	ABSDATA	113	97	14
	INDX	68	19	72

Weekly SLA Customer Report

Customer AUJ_Production
 Database ID 41



Database Tablespace AUJDB_BI_TS1

Date	Tablespace Name	Filesize (Gb)	Usedsize (Gb)	Percentage free
16-Jan-21	ABSDATA	330	299	9
	INDX	266	115	57
15-Jan-21	ABSDATA	330	299	9
	INDX	266	115	57
14-Jan-21	ABSDATA	330	299	9
	INDX	266	115	57
13-Jan-21	ABSDATA	330	299	9
	INDX	266	115	57
12-Jan-21	ABSDATA	330	299	9
	INDX	266	115	57
11-Jan-21	ABSDATA	330	299	9
	INDX	266	115	57
10-Jan-21	ABSDATA	330	299	9
	INDX	266	115	57

BI Status and last ETL error for AUJDB_BI

	Sun 10/1/2021	Mon 11/1/2021	Tue 12/1/2021	Wed 13/1/2021	Thu 14/1/2021	Fri 15/1/2021	Sat 16/1/2021
ABS DataWarehouse ETL Health	OK	OK	OK	OK	OK	OK	OK
ABS DWHStaging ETL Health	OK	OK	OK	OK	OK	OK	OK

BI Status and last ETL error for AUJDB_BI_TS1

	Sun 10/1/2021	Mon 11/1/2021	Tue 12/1/2021	Wed 13/1/2021	Thu 14/1/2021	Fri 15/1/2021	Sat 16/1/2021
ABS DataWarehouse ETL Health	OK	OK	Not OK	Not OK	Not OK	Not OK	Not OK
ABS DWHStaging ETL Health	OK	OK	OK	OK	OK	OK	OK

Weekly SLA Customer Report

Customer AUJ_Production
Database ID 41

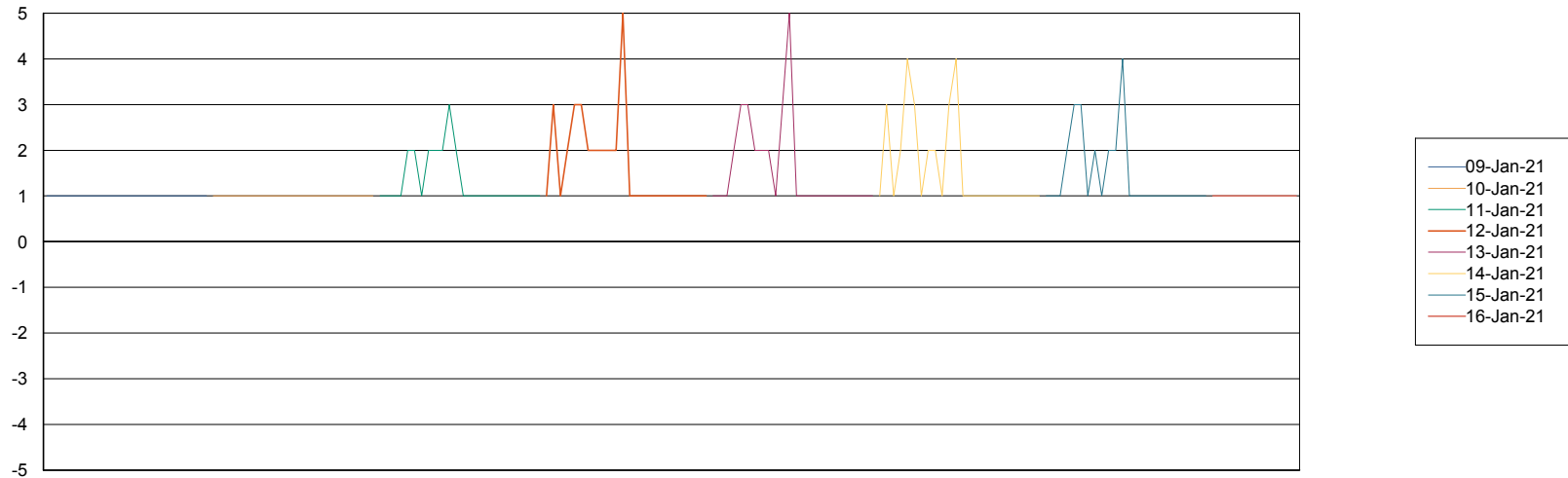


BI last ETL error for AUJDB_BI_TS1

Wed, 13-01-2021	ORA-01652: unable to extend temp segment by 128 in tablespace TEMP
Fri, 15-01-2021	ORA-01652: unable to extend temp segment by 128 in tablespace TEMP
Tue, 12-01-2021	ORA-01652: unable to extend temp segment by 128 in tablespace TEMP
Thu, 14-01-2021	ORA-01652: unable to extend temp segment by 128 in tablespace TEMP
Sat, 16-01-2021	ORA-01652: unable to extend temp segment by 128 in tablespace TEMP

Standby Database Health AUJ_Production

Recovery lag for last 7 days



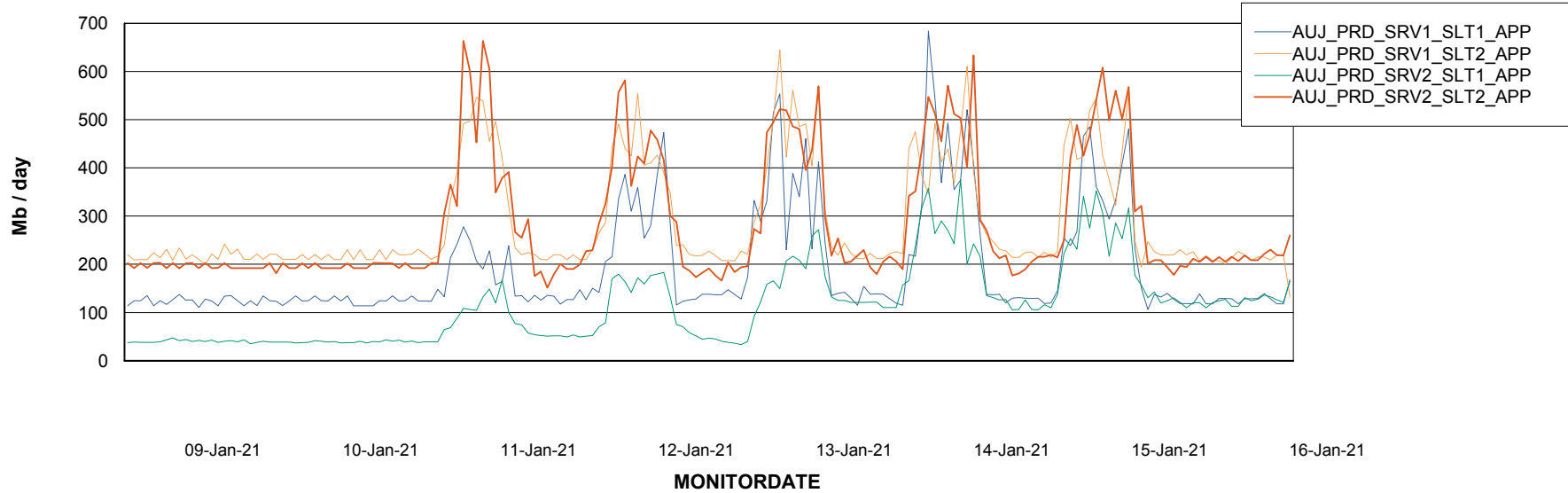
Weekly SLA Customer Report

Customer AUJ_Production
Database ID 41

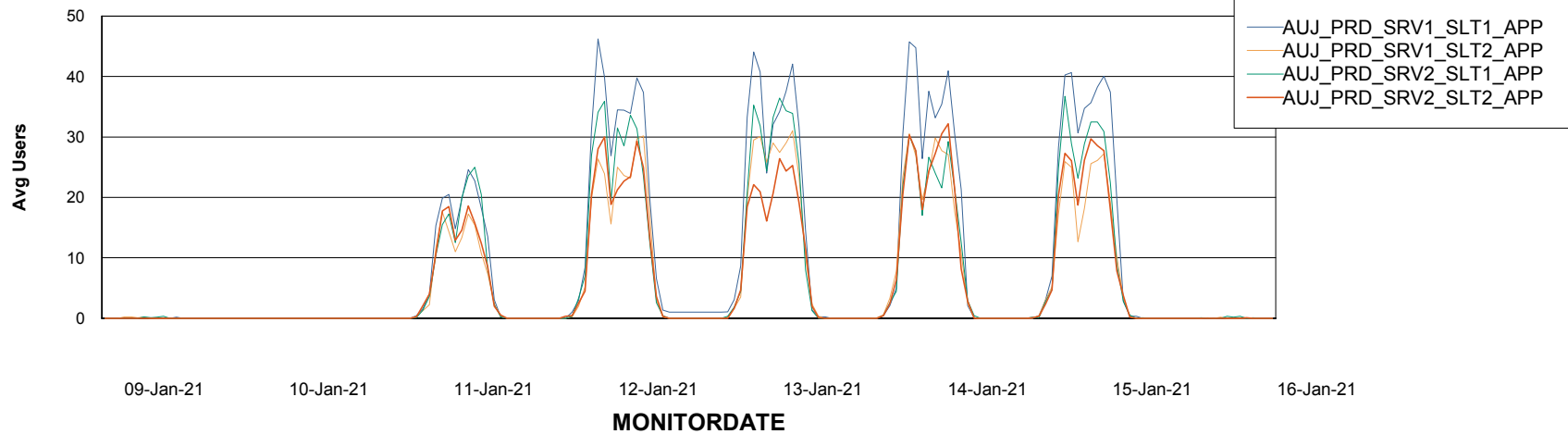


ABSSolute Application Server Services

Avg memory used per ABS Server Service



Avg users per day per ABS server



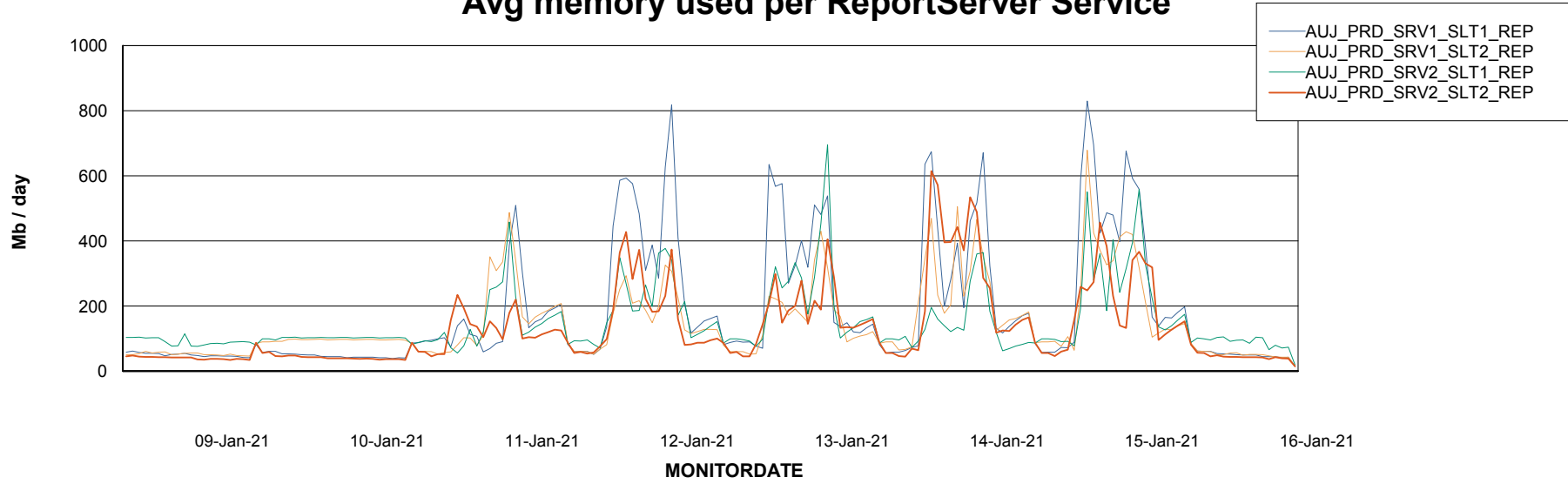
Weekly SLA Customer Report

Customer AUJ_Production
Database ID 41



ABSSolute Application ReportServer Services

Avg memory used per ReportServer Service



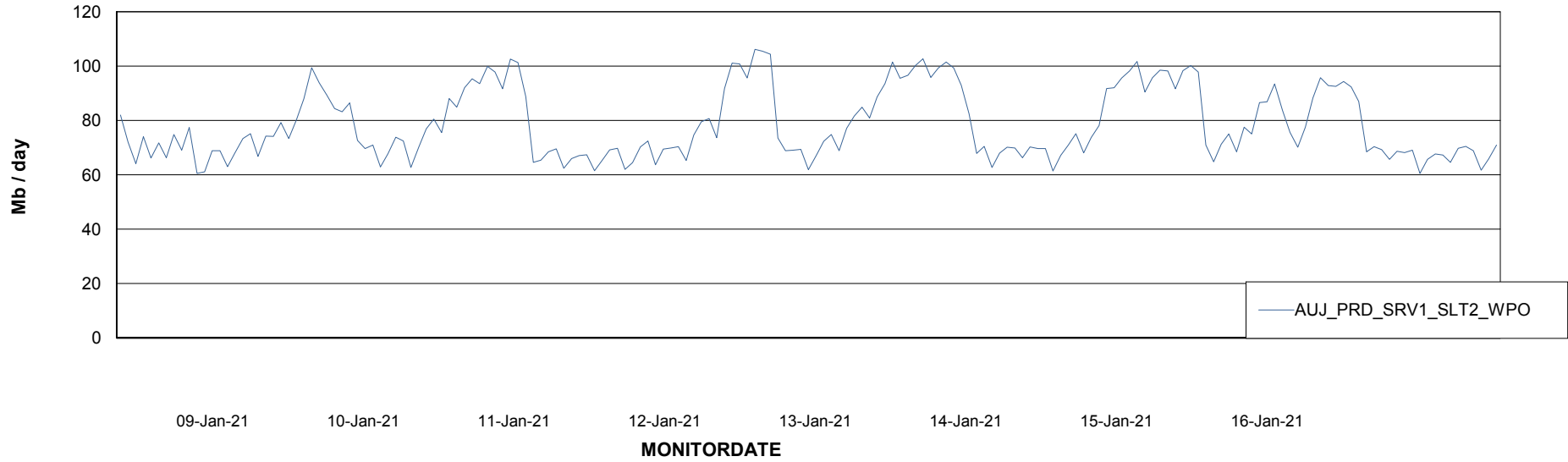
Weekly SLA Customer Report

Customer AUJ_Production
Database ID 41



ABSSolute Web Component Services

Avg memory used per ABS Web component



Weekly SLA Customer Report

Customer AUJ_Production
Database ID 41



Disaster per ABS component

