

# Weekly SLA Customer Report

Customer JSG\_Production  
Database ID 102



## Harddisk Usage JSG\_PRD\_CRUSHER

	Free disk space on c: (%)	Total disk space on c: (Gb)
12-Dec-20	70	79
11-Dec-20	68	79
10-Dec-20	67	79
09-Dec-20	69	79
08-Dec-20	69	79
07-Dec-20	69	79
06-Dec-20	69	79

## Harddisk Usage JSG\_PRD\_CYPHER

	Free disk space on c: (%)
12-Dec-20	72
11-Dec-20	72
10-Dec-20	72
09-Dec-20	74
08-Dec-20	74
07-Dec-20	74
06-Dec-20	74

# Weekly SLA Customer Report

Customer JSG\_Production  
 Database ID 102



Harddisk Usage JSG\_PRD\_GUINAN

	Free disk space on c: (%)
12-Dec-20	71
10-Dec-20	58
09-Dec-20	61
08-Dec-20	61
07-Dec-20	61
06-Dec-20	61

Harddisk Usage JSG\_PRD\_LAFORGE

	Free disk space on c: (%)
12-Dec-20	56
06-Dec-20	55

# Weekly SLA Customer Report

Customer JSG\_Production  
Database ID 102



## Harddisk Usage JSG\_PRD\_PICARD

	Free disk space on c: (%)	Free disk space on d: (%)
12-Dec-20	48	77
11-Dec-20	48	77
10-Dec-20	48	76
09-Dec-20	48	77
08-Dec-20	47	77
07-Dec-20	47	77
06-Dec-20	48	77

## Harddisk Usage JSG\_PRD\_RIKER

	Free disk space on c: (%)	Total disk space on c: (Gb)	Free disk space on d: (%)	Total disk space on d: (Gb)
12-Dec-20	66	149	52	1,024
11-Dec-20	66	149	52	1,024
10-Dec-20	66	149	52	1,024
09-Dec-20	66	149	52	1,024
08-Dec-20	66	149	52	1,024
07-Dec-20	66	149	53	1,024
06-Dec-20	66	149	53	1,024

# Weekly SLA Customer Report

Customer JSG\_Production  
Database ID 102



## Harddisk Usage JSG\_PRD\_TROI

	Free disk space on c: (%)	Total disk space on c: (Gb)
12-Dec-20	62	149
11-Dec-20	62	149
10-Dec-20	61	149
09-Dec-20	63	149
08-Dec-20	62	149
07-Dec-20	62	149
06-Dec-20	62	0

## Harddisk Usage JSG\_PRD\_WORF

	Free disk space on c: (%)	Total disk space on c: (Gb)
12-Dec-20	55	149
11-Dec-20	55	149
10-Dec-20	55	149
09-Dec-20	56	0
08-Dec-20	55	149
06-Dec-20	57	0

# Weekly SLA Customer Report

Customer JSG\_Production  
Database ID 102



Harddisk Usage JSG\_PRD\_YAR

	Free disk space on c: (%)	Free disk space on d: (%)
12-Dec-20	64	83
11-Dec-20	0	83
10-Dec-20	0	83
09-Dec-20	0	83
08-Dec-20	63	83
07-Dec-20	64	83
06-Dec-20	64	83

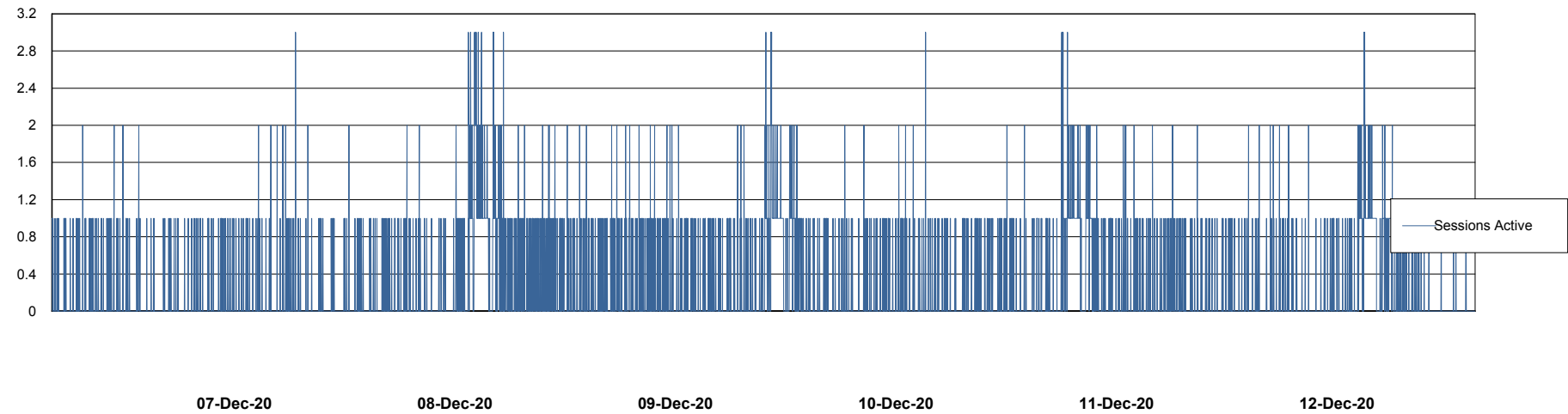
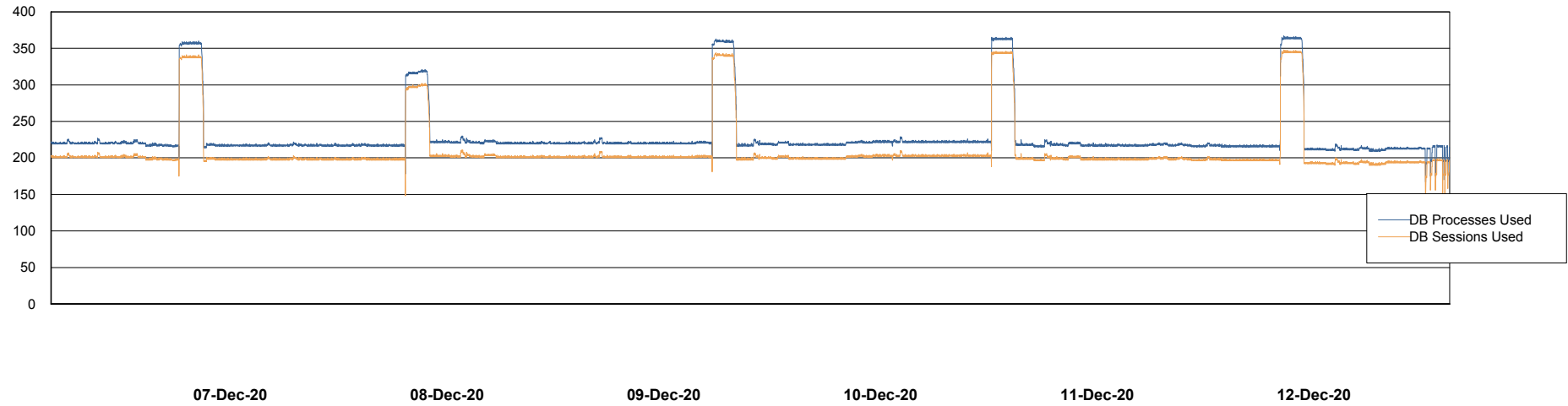
# Weekly SLA Customer Report

Customer JSG\_Production  
Database ID 102



Database Performance JSG\_PRD\_PICARD\_DB

DB Processes Max 1,000



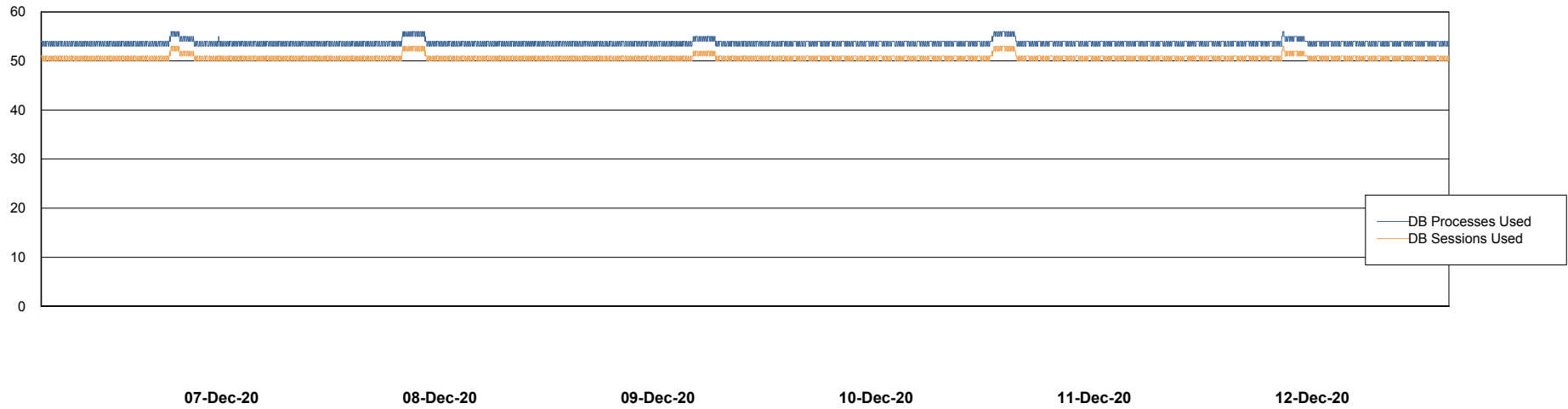
# Weekly SLA Customer Report

Customer JSG\_Production  
Database ID 102



Database Performance JSG\_PRD\_RIKER\_DB

DB Processes Max 1,000



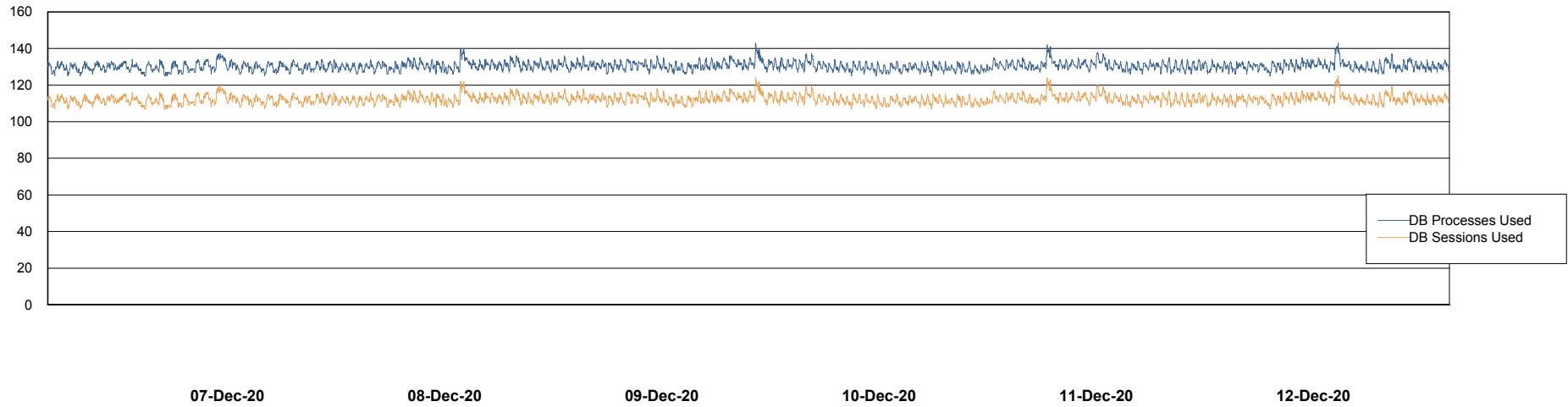
# Weekly SLA Customer Report

Customer JSG\_Production  
Database ID 102



Database Performance JSG\_PRD\_YAR

DB Processes Max 1,000



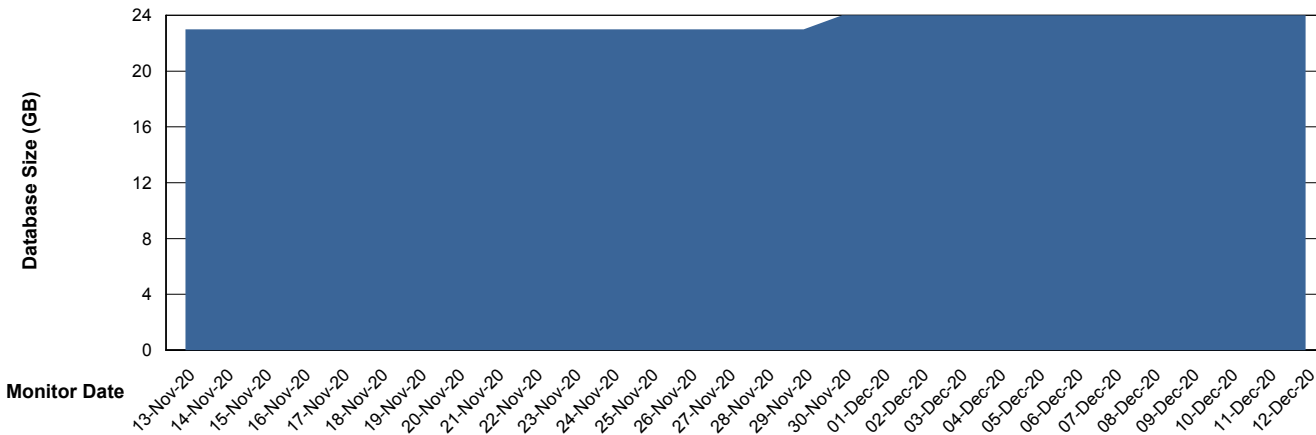
# Weekly SLA Customer Report

Customer JSG\_Production  
Database ID 102



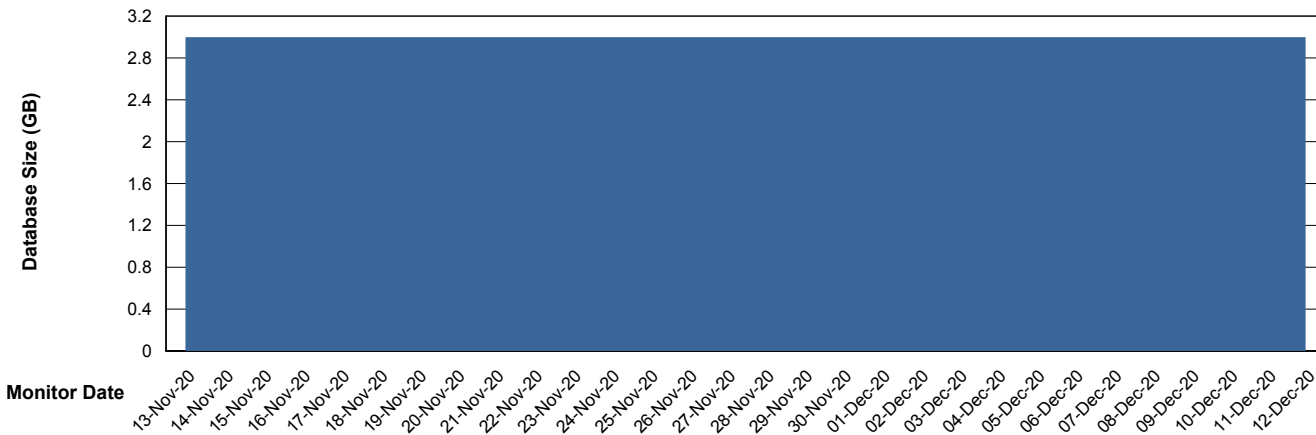
DATABASE SIZE JSG\_PRD\_PICARD\_DB

### Database growth over last month



DATABASE SIZE JSG\_PRD\_YAR

### Database growth over last month



# Weekly SLA Customer Report

Customer JSG\_Production  
Database ID 102



## Database Tablespace JSG\_PRD\_PICARD\_DB

Date	Tablespace Name	Filesize (Gb)	Usedsize (Gb)	Percentage free
12-Dec-20	ABSDATA	40	2	95
	INDX	40	0	100
11-Dec-20	ABSDATA	40	2	95
	INDX	40	0	100
10-Dec-20	ABSDATA	40	2	95
	INDX	40	0	100
09-Dec-20	ABSDATA	40	2	95
	INDX	40	0	100
08-Dec-20	ABSDATA	40	2	95
	INDX	40	0	100
07-Dec-20	ABSDATA	40	2	95
	INDX	40	0	100
06-Dec-20	ABSDATA	40	2	95
	INDX	40	0	100

# Weekly SLA Customer Report

Customer JSG\_Production  
 Database ID 102



Database Tablespace JSG\_PRD\_YAR

Date	Tablespace Name	Filesize (Gb)	Usedsize (Gb)	Percentage free
12-Dec-20	ABSDATA	40	1	98
	INDX	40	0	99
11-Dec-20	ABSDATA	40	1	98
	INDX	40	0	99
10-Dec-20	ABSDATA	40	1	98
	INDX	40	0	99
09-Dec-20	ABSDATA	40	1	98
	INDX	40	0	99
08-Dec-20	ABSDATA	40	1	98
	INDX	40	0	99
07-Dec-20	ABSDATA	40	1	98
	INDX	40	0	99
06-Dec-20	ABSDATA	40	1	98
	INDX	40	0	99

BI Status and last ETL error for JSG\_PRD\_YAR

	Mon 7/12/2020	Tue 8/12/2020	Wed 9/12/2020	Thu 10/12/2020	Fri 11/12/2020	Sat 12/12/2020
<b>ABS DataWarehouse ETL Health</b>	OK	OK	OK	OK	OK	OK
<b>ABS DWHStaging ETL Health</b>	OK	OK	OK	OK	OK	OK

## Weekly SLA Customer Report

Customer JSG\_Production  
Database ID 102



BI last ETL error for	JSG_PRD_YAR
Mon, 7-12-2020	None
Wed, 9-12-2020	None
Fri, 11-12-2020	None
Thu, 10-12-2020	None
Sat, 12-12-2020	None
Tue, 8-12-2020	None
Tue, 8-12-2020	None
Sun, 6-12-2020	None
Sun, 6-12-2020	None
Mon, 7-12-2020	None
Wed, 9-12-2020	None
Sat, 12-12-2020	None
Fri, 11-12-2020	None
Thu, 10-12-2020	None

# Weekly SLA Customer Report

Customer JSG\_Production  
Database ID 102



Standby Database Health JSG\_Production

## Recovery lag for last 7 days



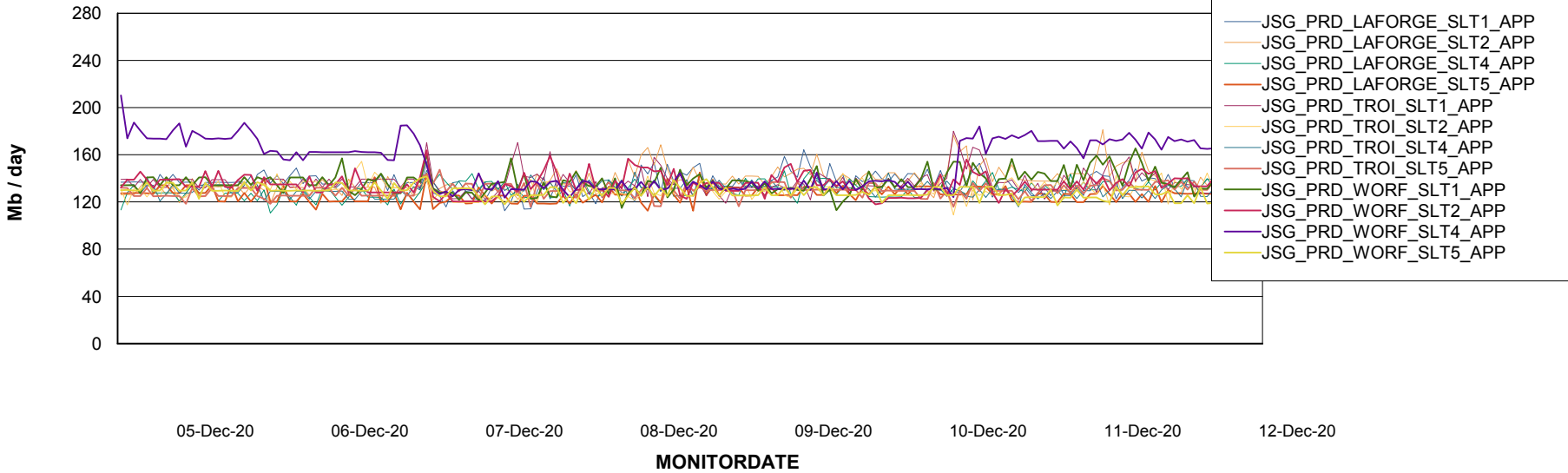
# Weekly SLA Customer Report

Customer JSG\_Production  
Database ID 102

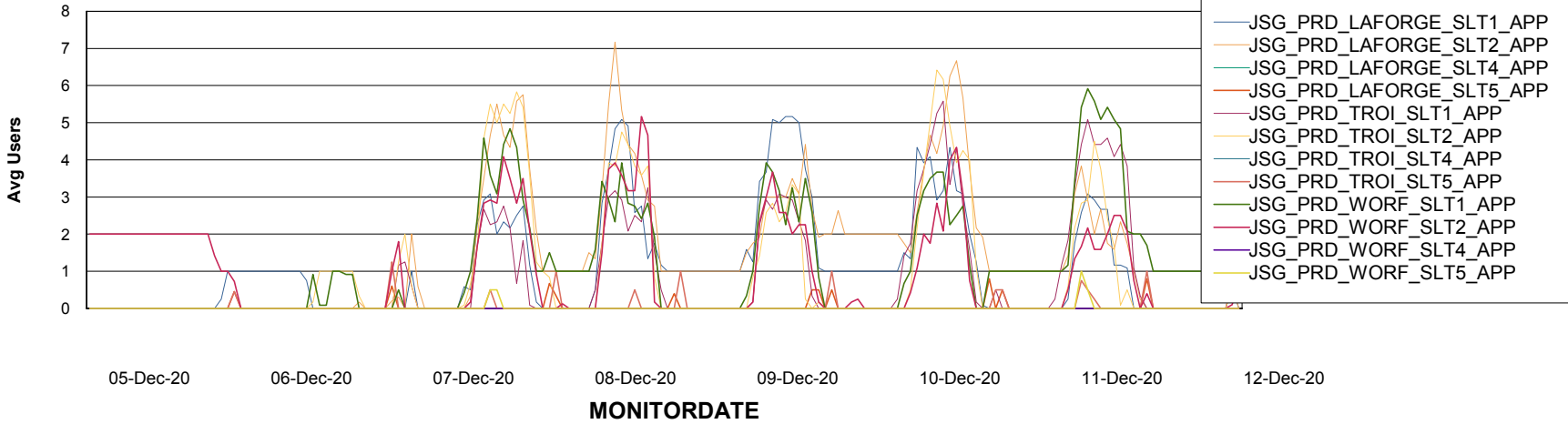


## ABSSolute Application Server Services

### Avg memory used per ABS Server Service



### Avg users per day per ABS server



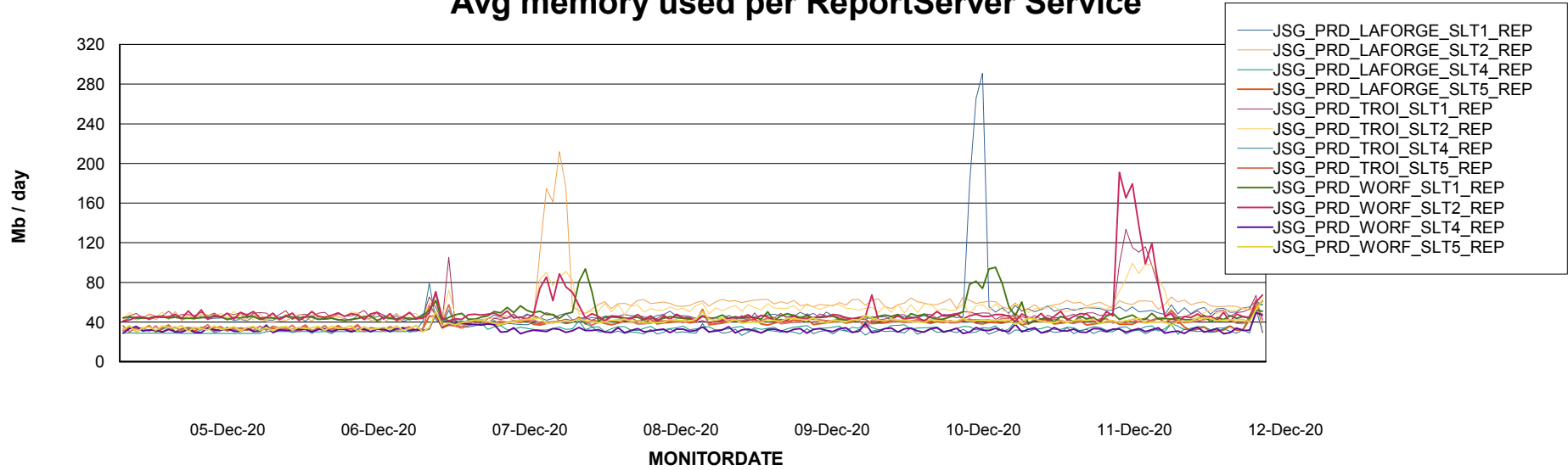
# Weekly SLA Customer Report

Customer JSG\_Production  
Database ID 102



## ABSSolute Application ReportServer Services

### Avg memory used per ReportServer Service



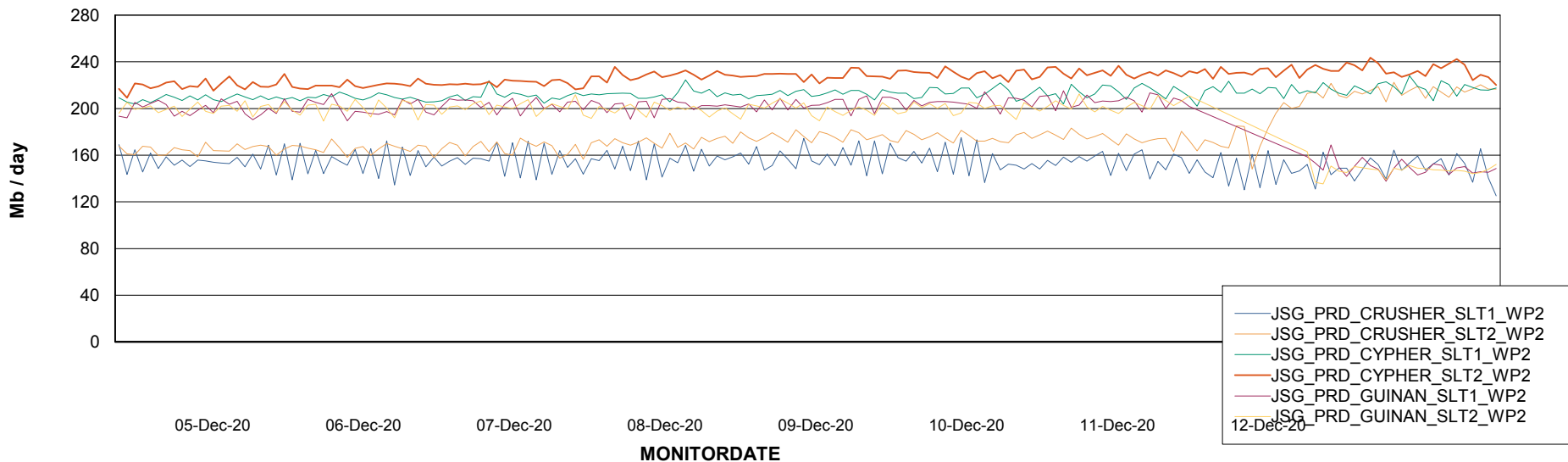
# Weekly SLA Customer Report

Customer JSG\_Production  
Database ID 102



## ABSSolute Web Component Services

### Avg memory used per ABS Web component



# Weekly SLA Customer Report

Customer JSG\_Production  
Database ID 102



## Disaster per ABS component

