

# Weekly SLA Customer Report

Customer CUS Production  
Database ID 84



## Harddisk Usage CUS\_ABSBI

	Free disk space on c: (%)	Total disk space on c: (Gb)	Free disk space on d: (%)	Total disk space on d: (Gb)
31-Oct-20	71	199	63	800
30-Oct-20	71	199	64	800
29-Oct-20	71	199	64	800
28-Oct-20	72	199	64	800
27-Oct-20	72	199	64	800
26-Oct-20	72	199	64	800
25-Oct-20	71	199	64	800

## Harddisk Usage CUS\_ABSPROD1

	Free disk space on c: (%)	Total disk space on c: (Gb)
31-Oct-20	25	199
30-Oct-20	25	199
29-Oct-20	25	199
28-Oct-20	25	199
27-Oct-20	25	199
26-Oct-20	25	199
25-Oct-20	25	199

# Weekly SLA Customer Report

Customer CUS Production  
Database ID 84



## Harddisk Usage CUS\_ABSPROD2

	Free disk space on c: (%)	Total disk space on c: (Gb)
31-Oct-20	25	300
30-Oct-20	25	300
29-Oct-20	25	300
28-Oct-20	25	300
27-Oct-20	25	300
26-Oct-20	25	300
25-Oct-20	25	300

## Harddisk Usage CUS\_ABSWEBPROD

	Free disk space on c: (%)	Total disk space on c: (Gb)
31-Oct-20	71	199
30-Oct-20	71	199
29-Oct-20	71	199
28-Oct-20	71	199
27-Oct-20	71	199
26-Oct-20	71	199
25-Oct-20	71	199

# Weekly SLA Customer Report

Customer CUS Production  
Database ID 84



## Harddisk Usage CUS\_PrimaryDBSrv\_ABSDB1

	Free disk space on c: (%)	Total disk space on c: (Gb)	Free disk space on d: (%)	Total disk space on d: (Gb)
31-Oct-20	53	199	35	1,024
30-Oct-20	53	199	34	1,024
29-Oct-20	53	199	35	1,024
28-Oct-20	54	199	35	1,024
27-Oct-20	54	199	35	1,024
26-Oct-20	54	199	35	1,024
25-Oct-20	54	199	36	1,024

## Harddisk Usage CUS\_StandByDBSrv\_ABSDB2

	Free disk space on c: (%)	Total disk space on c: (Gb)	Free disk space on d: (%)	Total disk space on d: (Gb)
31-Oct-20	70	199	51	1,024
30-Oct-20	70	199	51	1,024
29-Oct-20	70	199	51	1,024
28-Oct-20	70	199	51	1,024
27-Oct-20	70	199	51	1,024
26-Oct-20	70	199	52	1,024
25-Oct-20	70	199	52	1,024

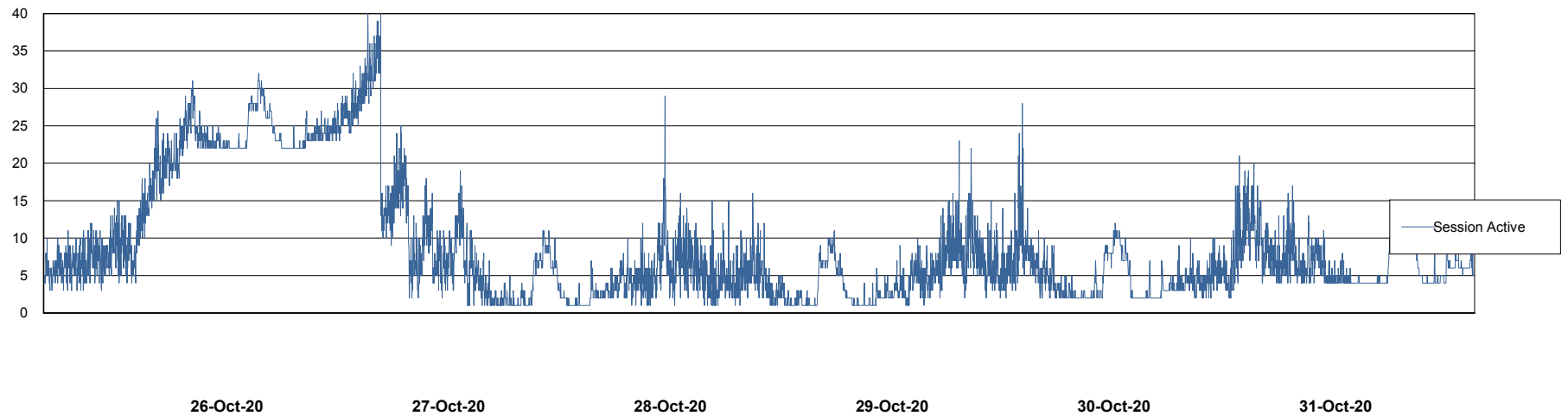
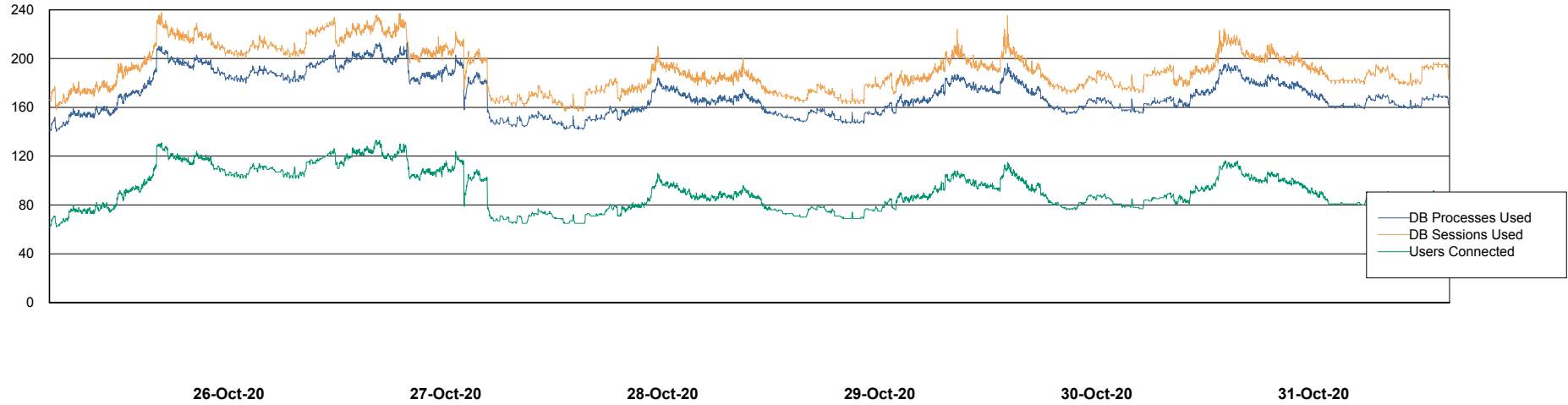
# Weekly SLA Customer Report

Customer CUS Production  
Database ID 84



## Database Performance CUS\_ProdDB\_Primary

DB Processes Max 300  
DB Sessions Max 472



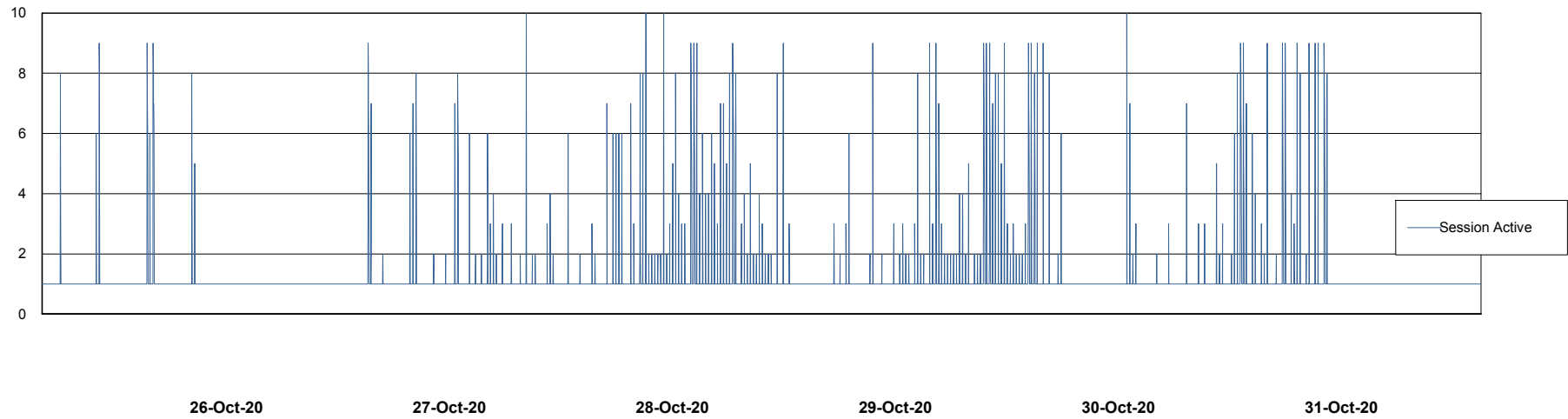
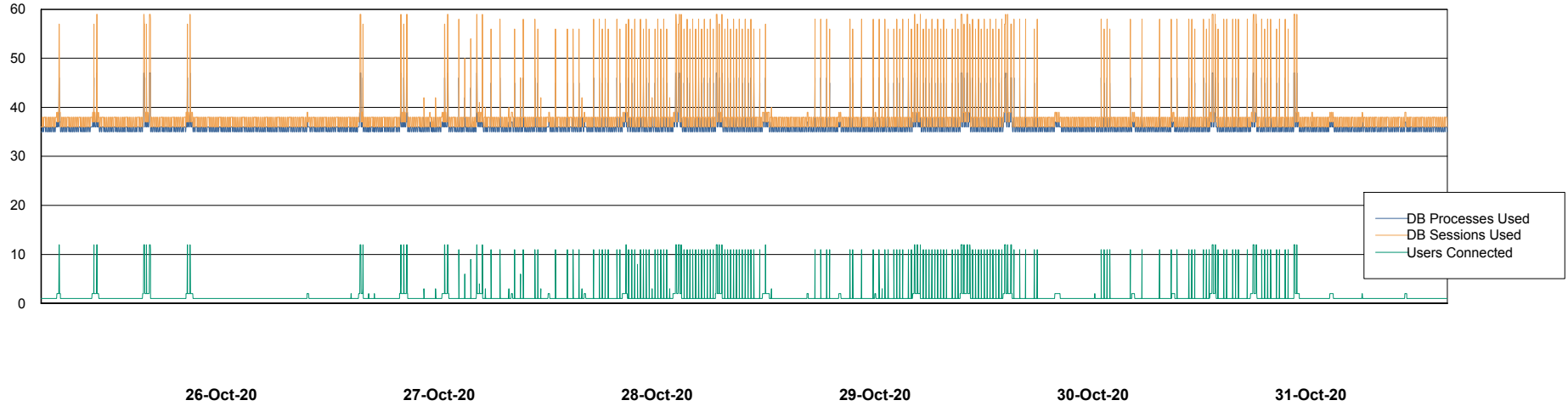
# Weekly SLA Customer Report

Customer CUS Production  
Database ID 84



## Database Performance CUS\_ProdDB\_Standby

DB Processes Max 300  
DB Sessions Max 472



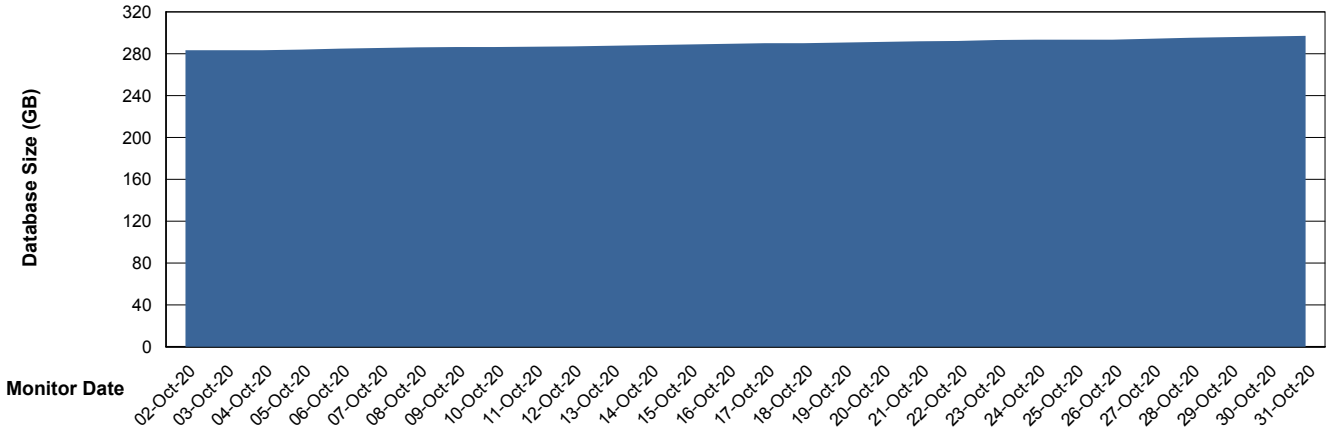
# Weekly SLA Customer Report

Customer CUS Production  
 Database ID 84



DATABASE SIZE CUS\_ProdDB\_Primary

Database growth over last month



Database Tablespace CUS\_ProdDB\_Primary

Date	Tablespace Name	Filesize (Gb)	Usedsize (Gb)	Percentage free
31-Oct-20	ABSDATA	129	110	15
	INDX	177	151	15
30-Oct-20	ABSDATA	129	110	15
	INDX	177	151	15
29-Oct-20	ABSDATA	129	109	16
	INDX	177	151	15
28-Oct-20	ABSDATA	129	109	16
	INDX	177	151	15
27-Oct-20	ABSDATA	129	109	16
	INDX	177	150	15
26-Oct-20	ABSDATA	129	109	16
	INDX	177	150	15
25-Oct-20	ABSDATA	129	109	16
	INDX	177	150	15

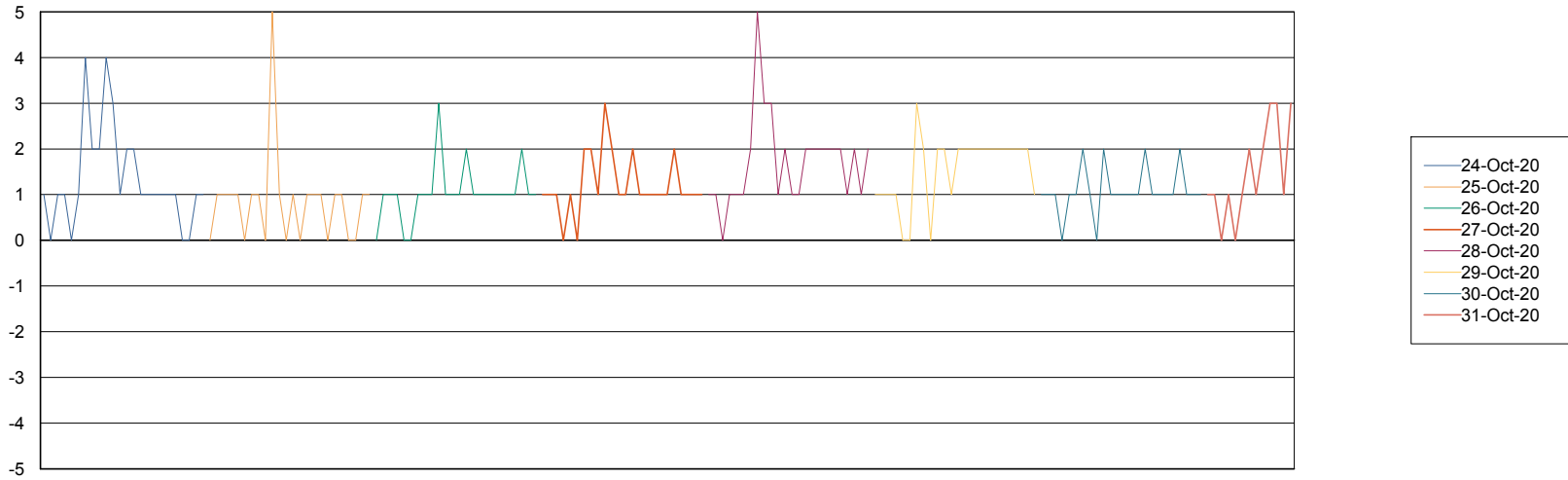
# Weekly SLA Customer Report

Customer CUS Production  
Database ID 84



Standby Database Health CUS Production

## Recovery lag for last 7 days



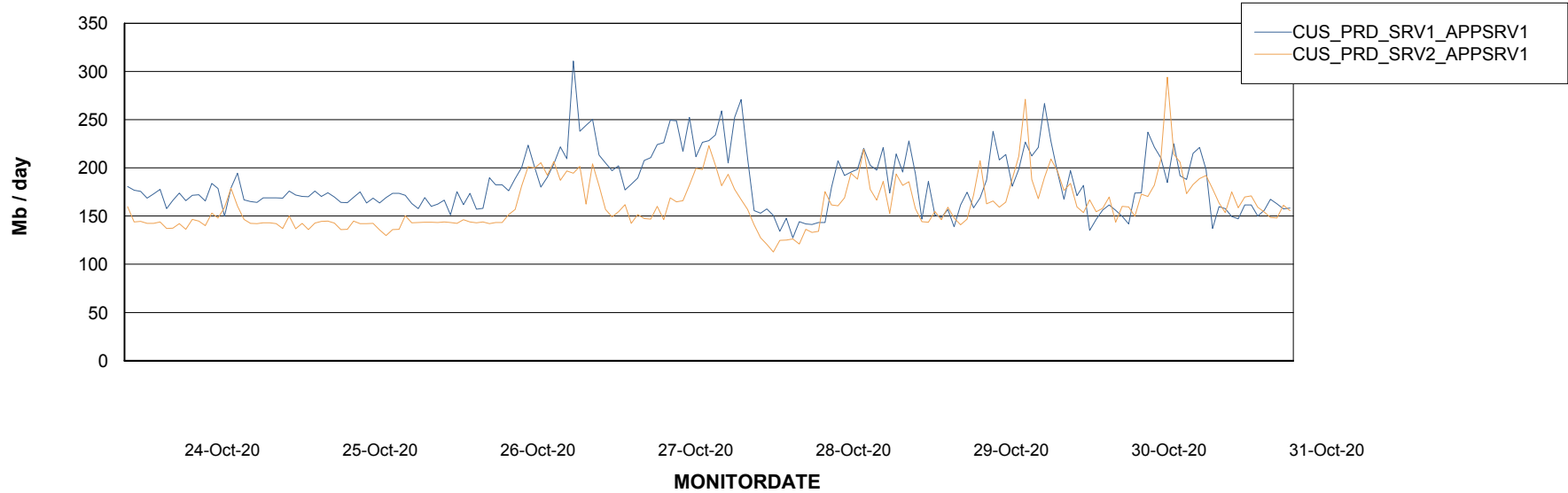
# Weekly SLA Customer Report

Customer CUS Production  
Database ID 84

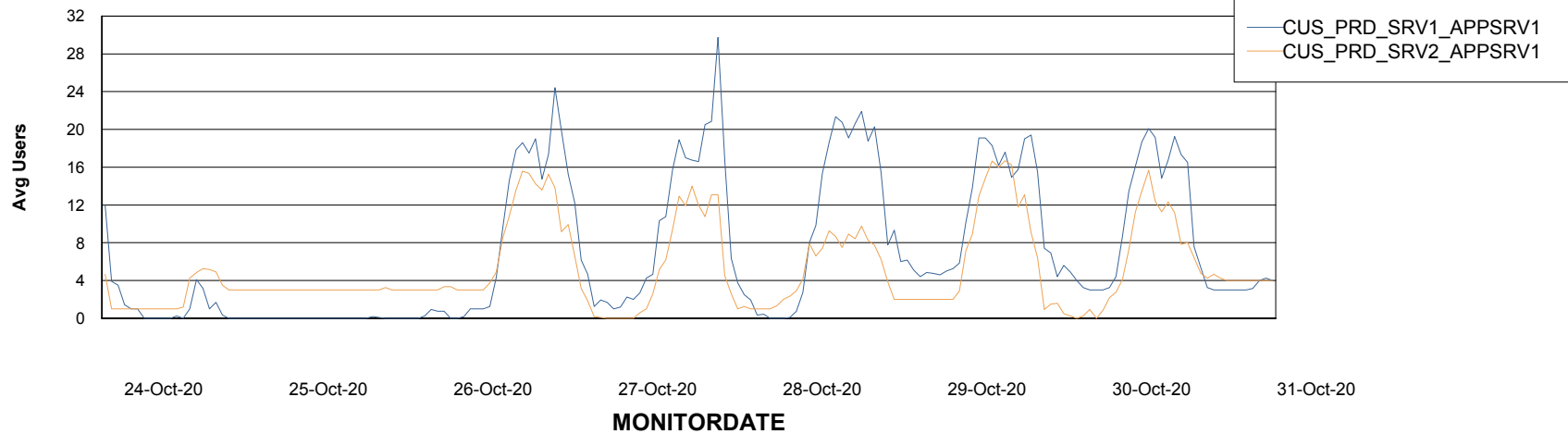


## ABSSolute Application Server Services

### Avg memory used per ABS Server Service



### Avg users per day per ABS server



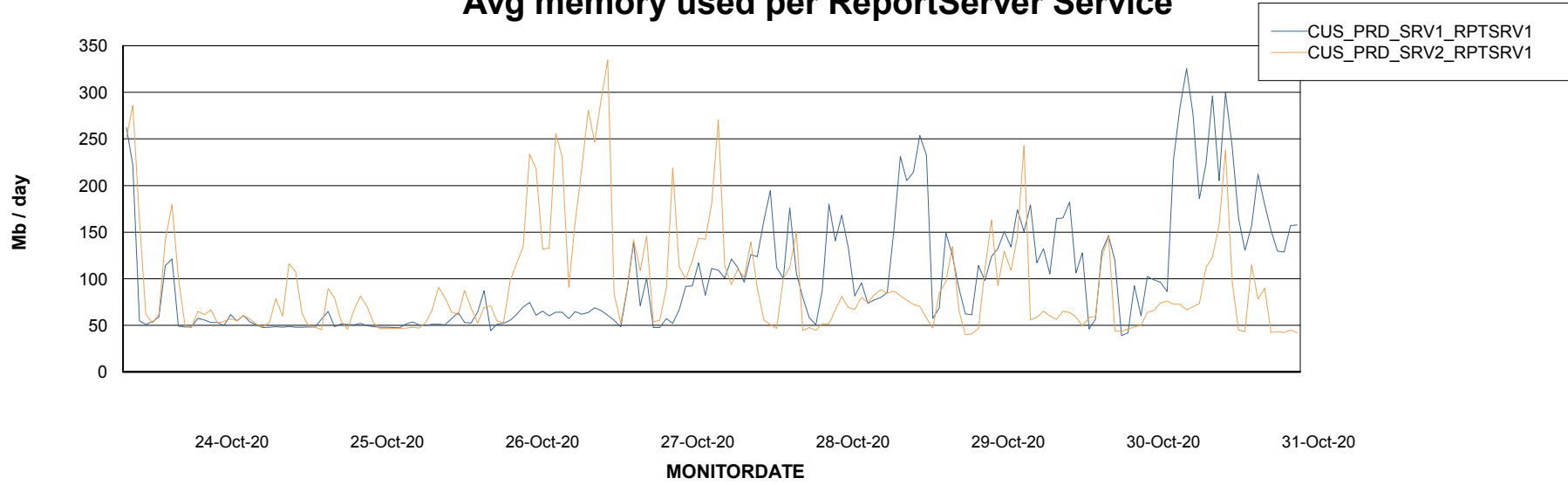
# Weekly SLA Customer Report

Customer CUS Production  
Database ID 84



## ABSolute Web Component Services

### Avg memory used per ReportServer Service



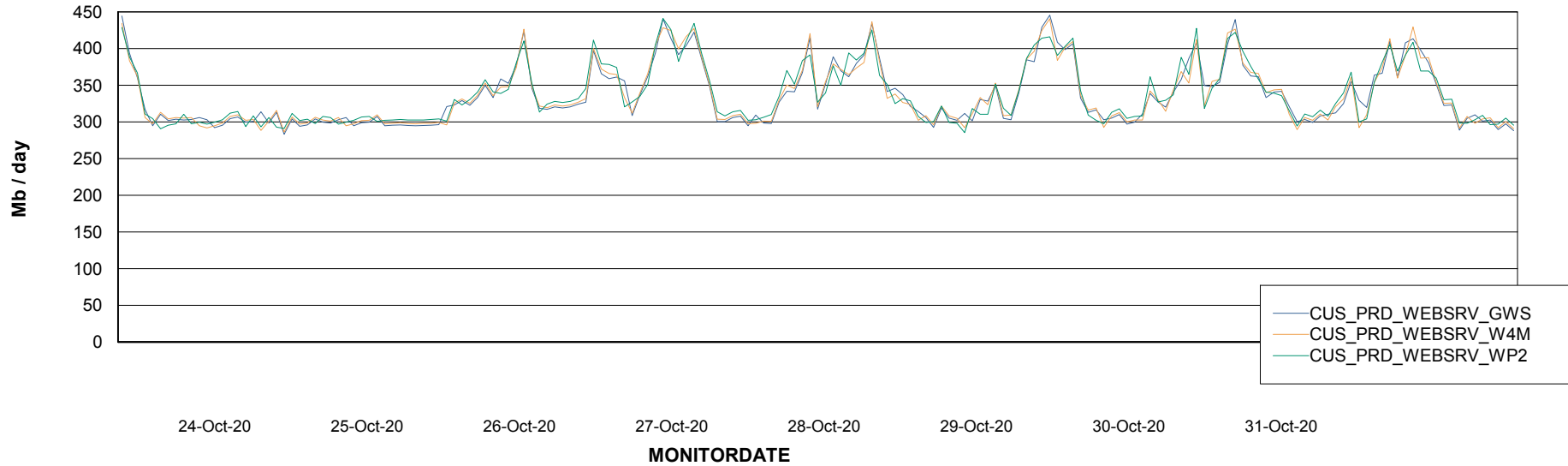
# Weekly SLA Customer Report

Customer CUS Production  
Database ID 84



## ABSSolute Web Component Services

### Avg memory used per ABS Web component



# Weekly SLA Customer Report

Customer CUS Production  
Database ID 84



### Disaster per ABS component

