

# Weekly SLA Customer Report

Customer PCO Production  
Database ID 44



## Harddisk Usage PCO\_PRD\_ORACLE1

	Free disk space on c: (%)	Total disk space on c: (Gb)	Free disk space on d: (%)	Total disk space on d: (Gb)
10-Oct-20	76	447	48	1,676
09-Oct-20	76	447	48	1,676
08-Oct-20	76	447	48	1,676
07-Oct-20	76	447	48	1,676
06-Oct-20	76	447	48	1,676
05-Oct-20	76	447	48	1,676

## Harddisk Usage PCO\_PRD\_ORACLE2

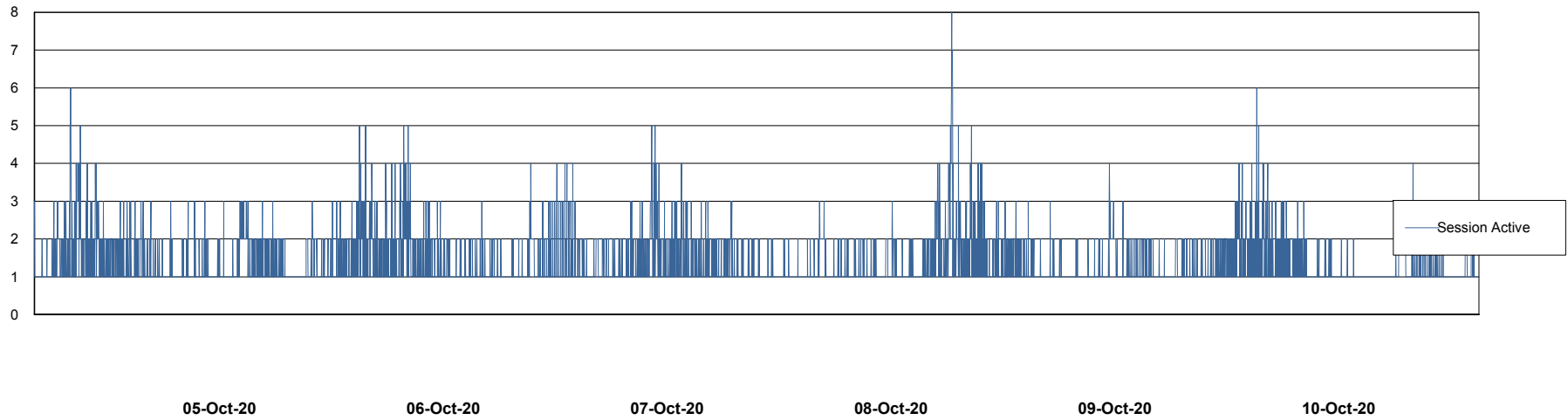
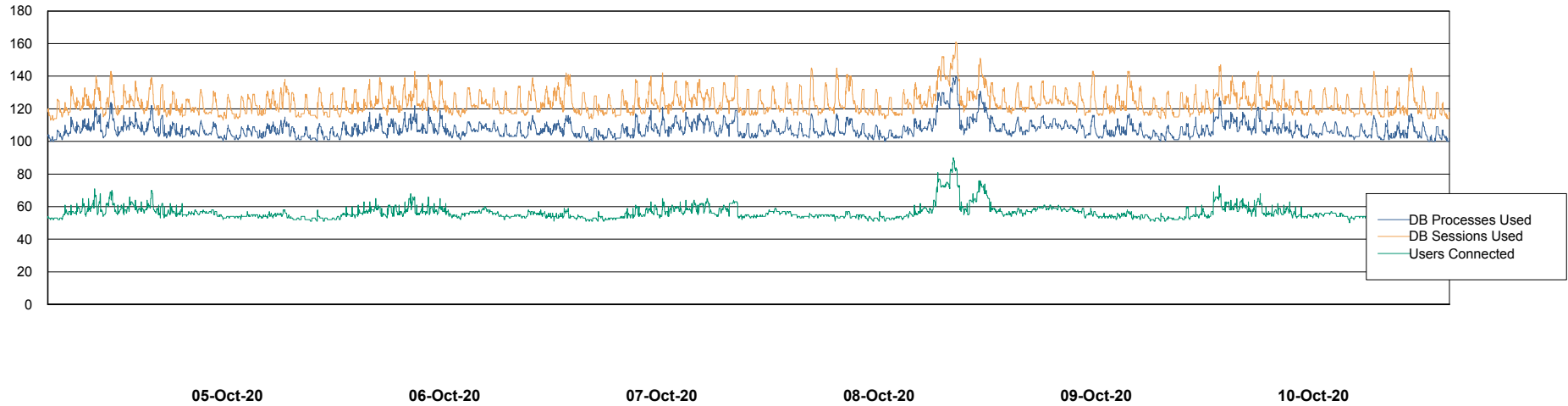
	Free disk space on c: (%)	Total disk space on c: (Gb)	Free disk space on d: (%)	Total disk space on d: (Gb)
10-Oct-20	75	279	19	838
09-Oct-20	75	279	19	838
08-Oct-20	75	279	19	838
07-Oct-20	75	279	19	838
06-Oct-20	75	279	18	838
05-Oct-20	75	279	19	838

# Weekly SLA Customer Report

Customer PCO Production  
Database ID 44



## Database Performance PCODB\_Production

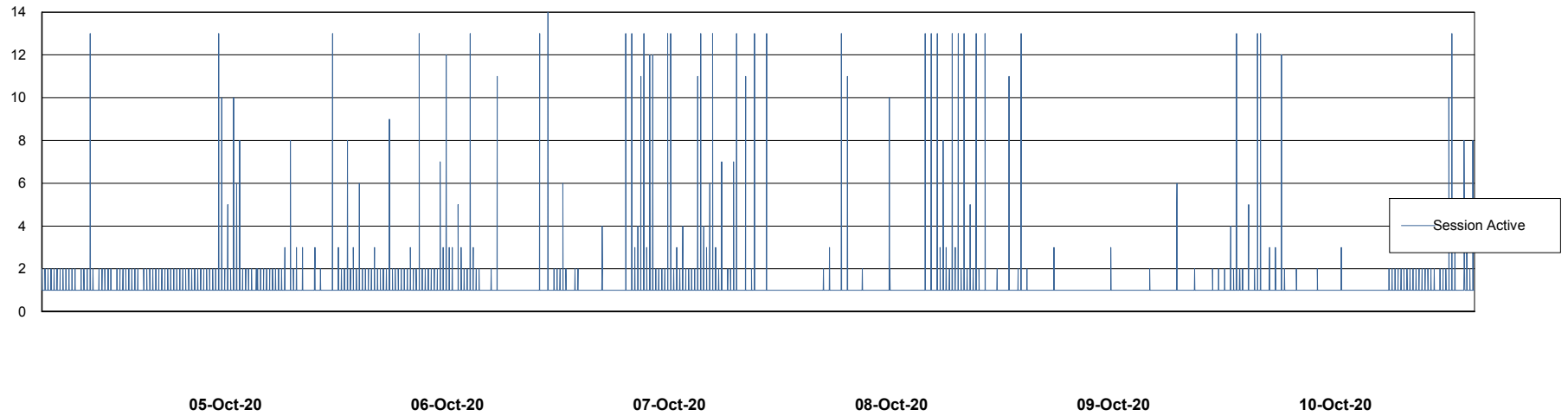
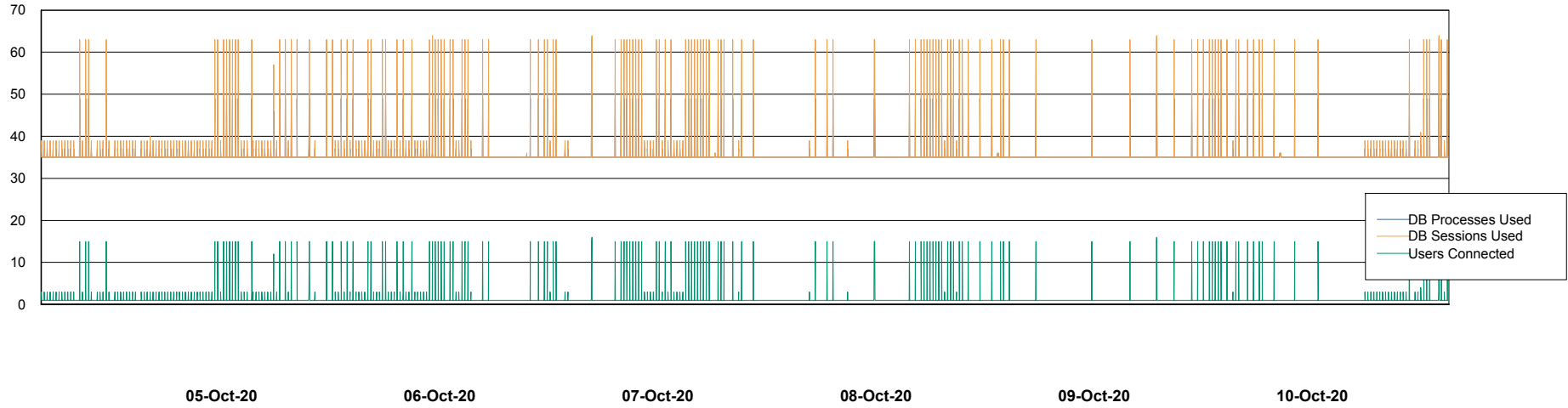


# Weekly SLA Customer Report

Customer PCO Production  
Database ID 44



## Database Performance PCODB\_Standby



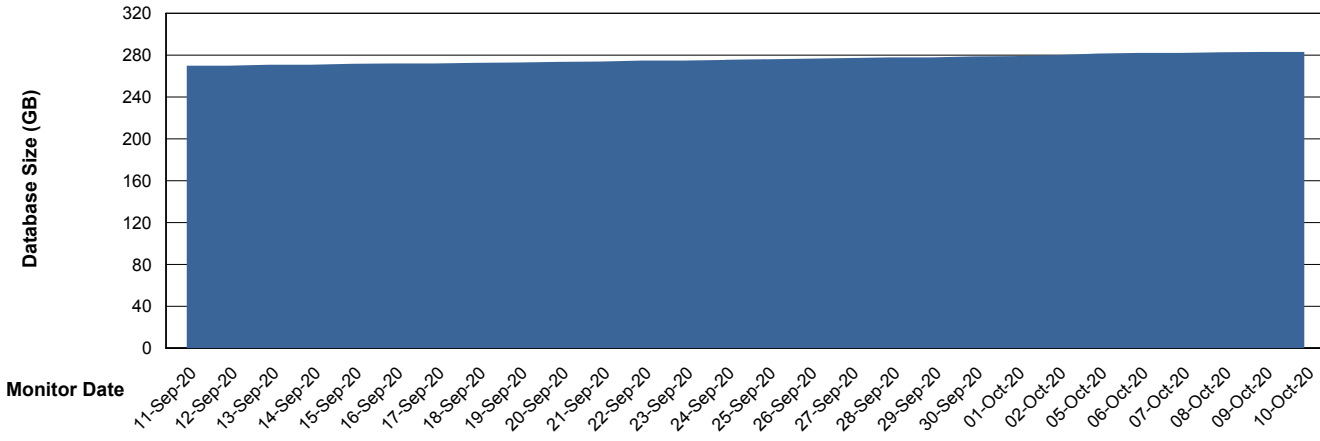
# Weekly SLA Customer Report

Customer PCO Production  
 Database ID 44



**DATABASE SIZE** PCODB\_Production

**Database growth over last month**



**Database Tablespace** PCODB\_Production

Date	Tablespace Name	Filesize (Gb)	Usedsize (Gb)	Percentage free
10-Oct-20	ABSDATA	238	101	58
	INDX	329	150	54
09-Oct-20	ABSDATA	238	101	58
	INDX	329	150	54
08-Oct-20	ABSDATA	238	101	58
	INDX	329	150	54
07-Oct-20	ABSDATA	238	101	58
	INDX	329	150	54
06-Oct-20	ABSDATA	238	101	58
	INDX	329	150	54
05-Oct-20	ABSDATA	238	101	58
	INDX	329	150	54

# Weekly SLA Customer Report

Customer PCO Production  
Database ID 44



Standby Database Health      PCO Production

## Recovery lag for last 7 days

