

Weekly SLA Customer Report

Customer PCO Production
Database ID 44



Harddisk Usage PCO_PRD_ORACLE1

	Free disk space on c: (%)	Total disk space on c: (Gb)	Free disk space on d: (%)	Total disk space on d: (Gb)
02-Oct-20	76	447	48	1,676
01-Oct-20	76	447	48	1,676
30-Sep-20	76	447	49	1,676
29-Sep-20	76	447	49	1,676
28-Sep-20	76	447	49	1,676
27-Sep-20	76	447	49	1,676

Harddisk Usage PCO_PRD_ORACLE2

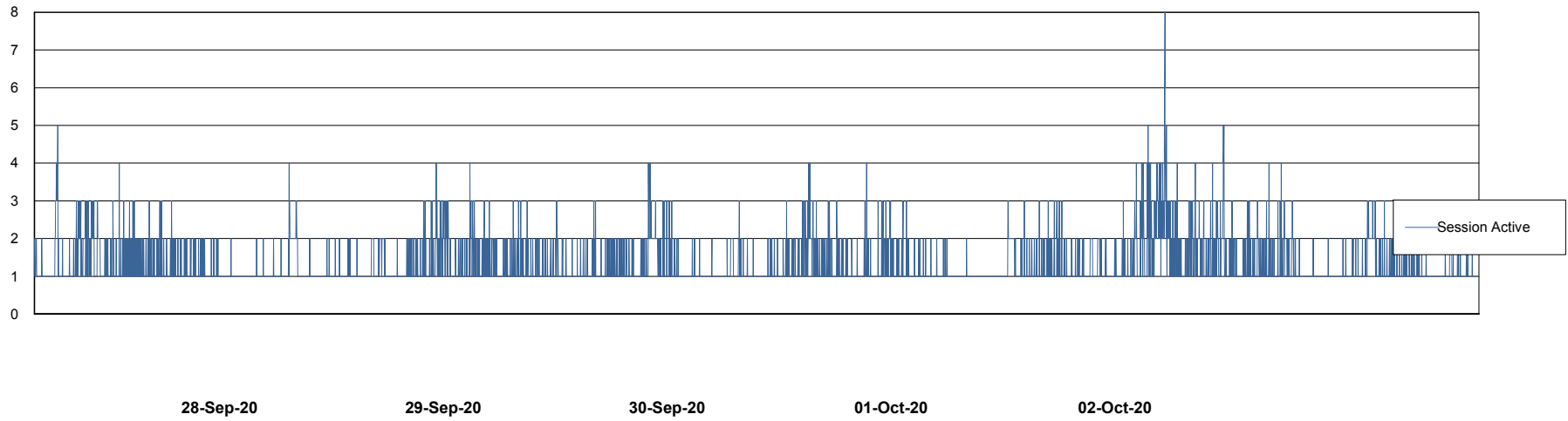
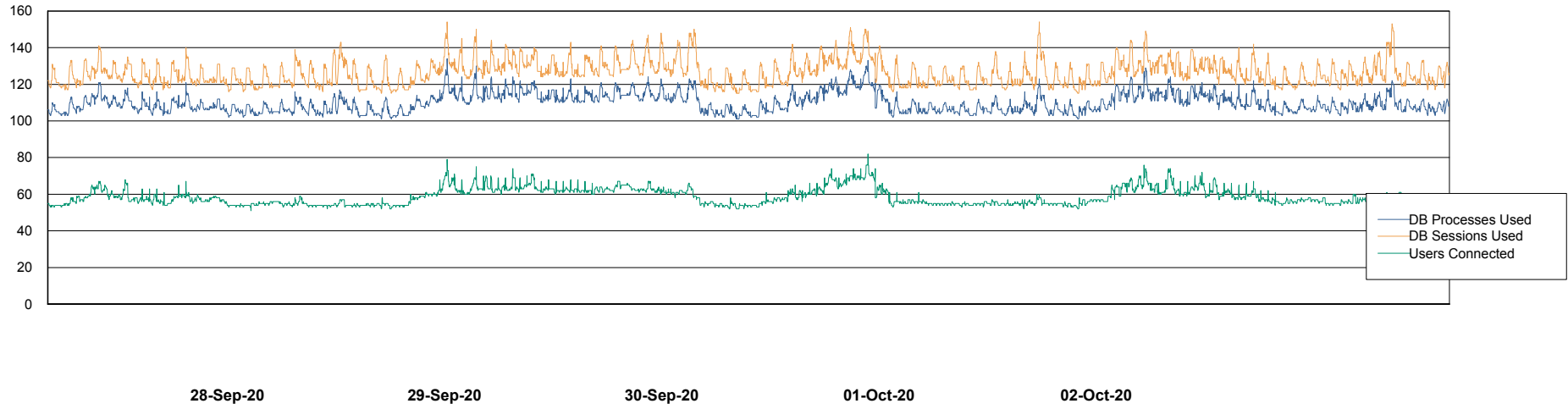
	Free disk space on c: (%)	Total disk space on c: (Gb)	Free disk space on d: (%)	Total disk space on d: (Gb)
02-Oct-20	75	279	18	838
01-Oct-20	75	279	19	838
30-Sep-20	75	279	19	838
29-Sep-20	75	279	19	838
28-Sep-20	75	279	19	838
27-Sep-20	75	279	19	838

Weekly SLA Customer Report

Customer PCO Production
Database ID 44



Database Performance PCODB_Production

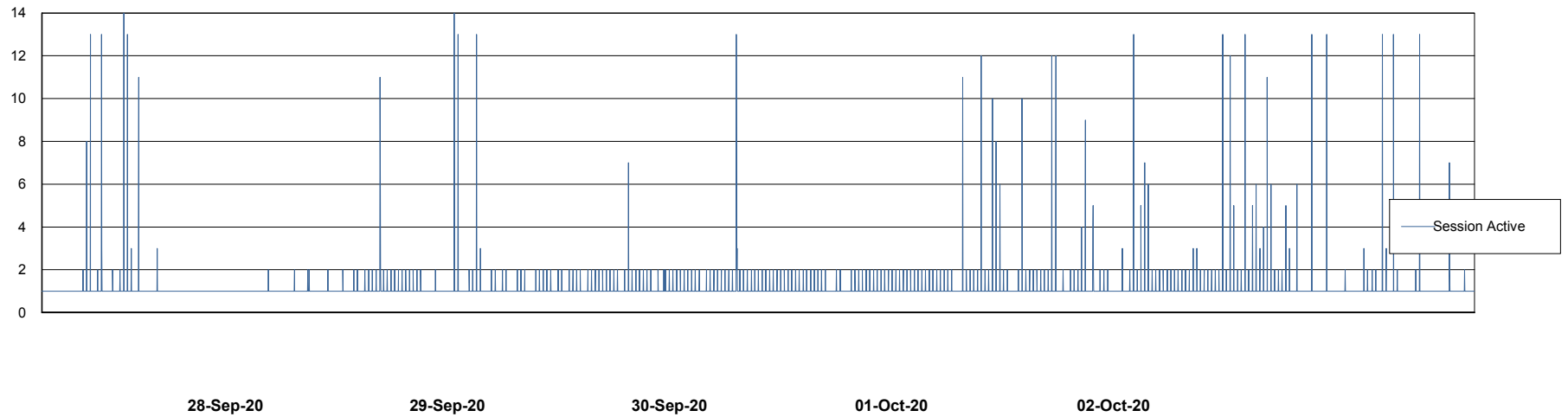
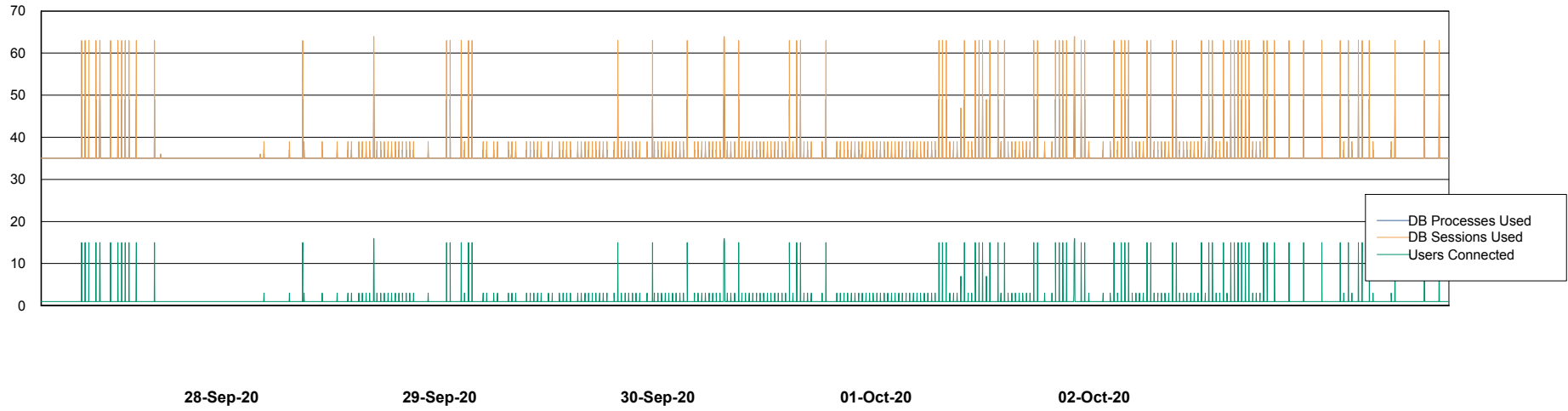


Weekly SLA Customer Report

Customer PCO Production
Database ID 44



Database Performance PCODB_Standby



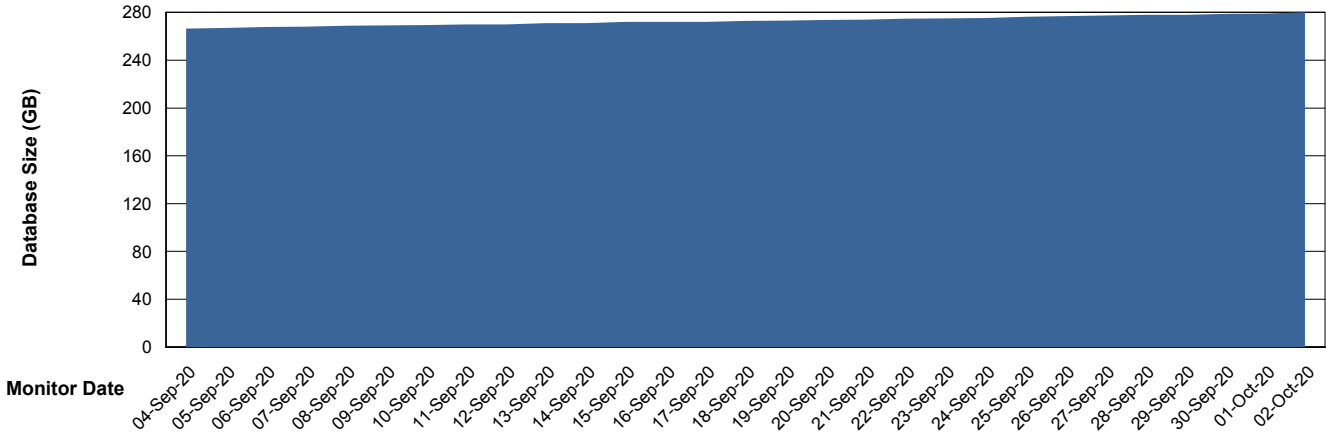
Weekly SLA Customer Report

Customer PCO Production
 Database ID 44



DATABASE SIZE PCODB_Production

Database growth over last month



Database Tablespace PCODB_Production

Date	Tablespace Name	Filesize (Gb)	Usedsize (Gb)	Percentage free
02-Oct-20	ABSDATA	238	101	58
	INDX	329	150	54
01-Oct-20	ABSDATA	238	101	58
	INDX	329	150	54
30-Sep-20	ABSDATA	238	101	58
	INDX	329	150	54
29-Sep-20	ABSDATA	238	101	58
	INDX	329	150	54
28-Sep-20	ABSDATA	238	101	58
	INDX	329	149	55
27-Sep-20	ABSDATA	238	101	58
	INDX	329	149	55

Weekly SLA Customer Report

Customer PCO Production
Database ID 44



Standby Database Health PCO Production

Recovery lag for last 7 days

