

# Weekly SLA Customer Report

Customer CUS Production  
Database ID 84



## Harddisk Usage CUS\_ABSBI

	Free disk space on c: (%)	Total disk space on c: (Gb)	Free disk space on d: (%)	Total disk space on d: (Gb)
03-Oct-20	71	199	64	800
02-Oct-20	71	199	64	800
01-Oct-20	71	199	65	800
30-Sep-20	71	199	65	800
29-Sep-20	71	199	65	800
28-Sep-20	71	199	65	800
27-Sep-20	71	199	65	800

## Harddisk Usage CUS\_ABSPROD1

	Free disk space on c: (%)	Total disk space on c: (Gb)
03-Oct-20	28	199
02-Oct-20	28	199
01-Oct-20	28	199
30-Sep-20	28	199
29-Sep-20	28	199
28-Sep-20	28	199
27-Sep-20	28	199

# Weekly SLA Customer Report

Customer CUS Production  
Database ID 84



## Harddisk Usage CUS\_ABSPROD2

	Free disk space on c: (%)	Total disk space on c: (Gb)
03-Oct-20	27	300
02-Oct-20	27	300
01-Oct-20	27	300
30-Sep-20	27	300
29-Sep-20	27	300
28-Sep-20	27	300
27-Sep-20	27	300

## Harddisk Usage CUS\_ABSWEBPROD

	Free disk space on c: (%)	Total disk space on c: (Gb)
03-Oct-20	71	199
02-Oct-20	71	199
01-Oct-20	71	199
30-Sep-20	71	199
29-Sep-20	71	199
28-Sep-20	71	199
27-Sep-20	71	199

# Weekly SLA Customer Report

Customer CUS Production  
Database ID 84



## Harddisk Usage CUS\_PrimaryDBSrv\_ABSDB1

	Free disk space on c: (%)	Total disk space on c: (Gb)	Free disk space on d: (%)	Total disk space on d: (Gb)
03-Oct-20	56	199	35	1,024
02-Oct-20	56	199	35	1,024
01-Oct-20	57	199	35	1,024
30-Sep-20	57	199	35	1,024
29-Sep-20	57	199	35	1,024
28-Sep-20	57	199	35	1,024
27-Sep-20	57	199	36	1,024

## Harddisk Usage CUS\_StandByDBSrv\_ABSDB2

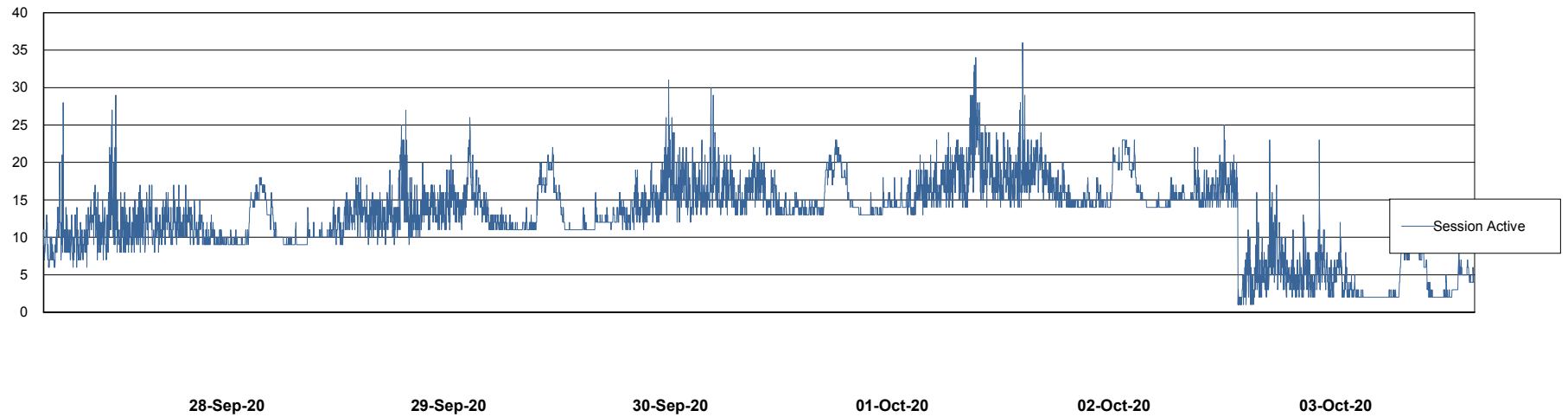
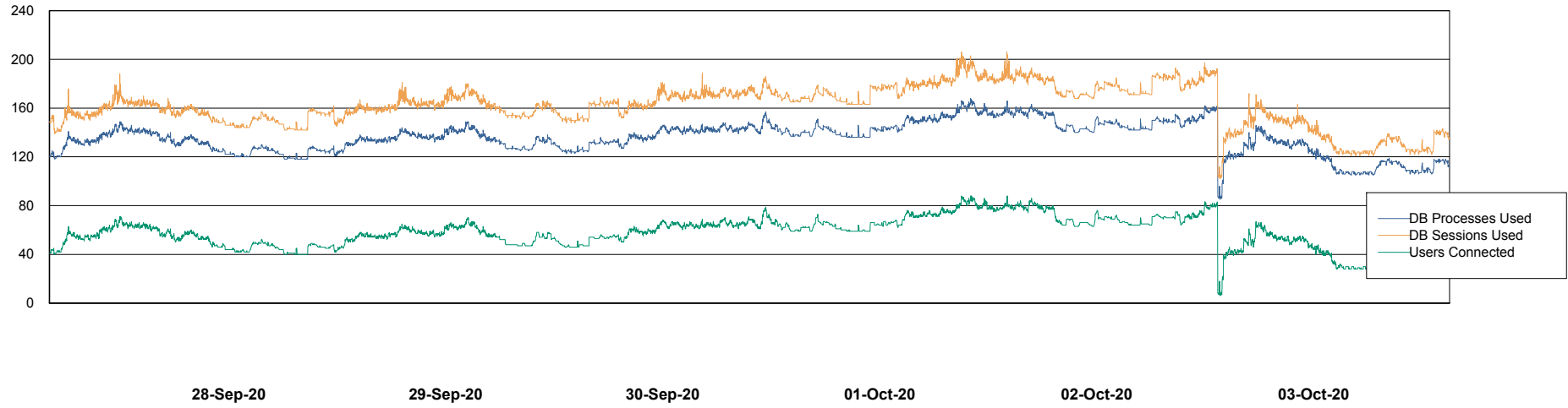
	Free disk space on c: (%)	Total disk space on c: (Gb)	Free disk space on d: (%)	Total disk space on d: (Gb)
03-Oct-20	70	199	50	1,024
02-Oct-20	70	199	51	1,024
01-Oct-20	70	199	51	1,024
30-Sep-20	70	199	51	1,024
29-Sep-20	70	199	51	1,024
28-Sep-20	70	199	51	1,024
27-Sep-20	70	199	51	1,024

# Weekly SLA Customer Report

Customer CUS Production  
Database ID 84



## Database Performance CUS\_ProdDB\_Primary

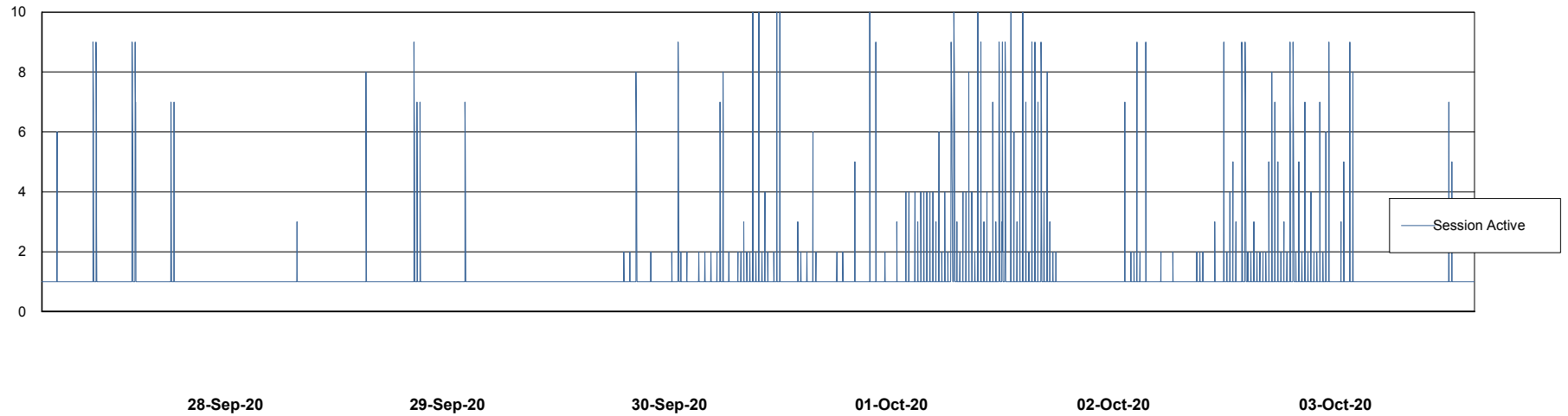
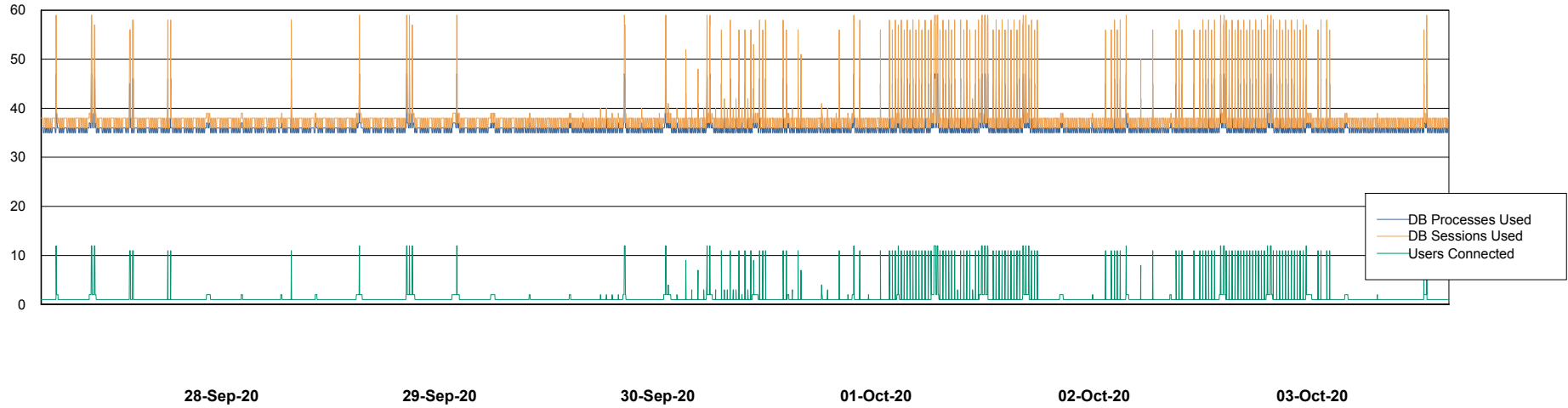


# Weekly SLA Customer Report

Customer CUS Production  
Database ID 84



## Database Performance CUS\_ProdDB\_Standby



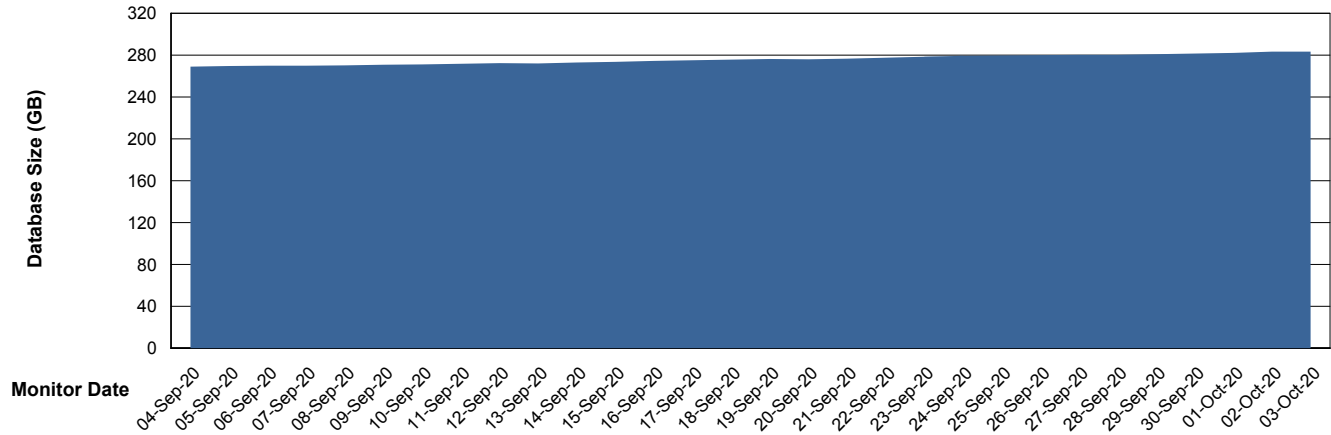
# Weekly SLA Customer Report

Customer CUS Production  
 Database ID 84



**DATABASE SIZE CUS\_ProdDB\_Primary**

**Database growth over last month**



**Database Tablespace CUS\_ProdDB\_Primary**

Date	Tablespace Name	Filesize (Gb)	Usedsize (Gb)	Percentage free
03-Oct-20	ABSDATA	129	106	18
	INDX	172	145	16
02-Oct-20	ABSDATA	129	105	19
	INDX	172	145	16
01-Oct-20	ABSDATA	129	105	19
	INDX	172	144	16
30-Sep-20	ABSDATA	129	105	19
	INDX	168	144	14
29-Sep-20	ABSDATA	129	105	19
	INDX	168	144	14
28-Sep-20	ABSDATA	129	104	19
	INDX	168	144	14
27-Sep-20	ABSDATA	129	104	19
	INDX	168	144	14

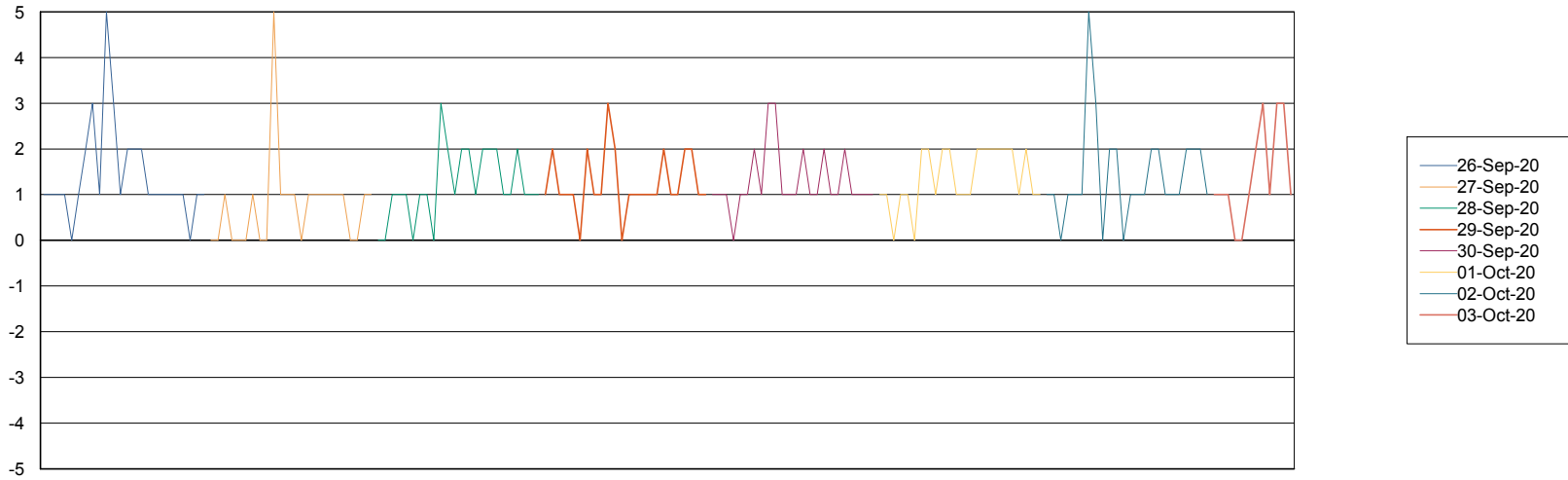
# Weekly SLA Customer Report

Customer CUS Production  
Database ID 84



Standby Database Health CUS Production

## Recovery lag for last 7 days



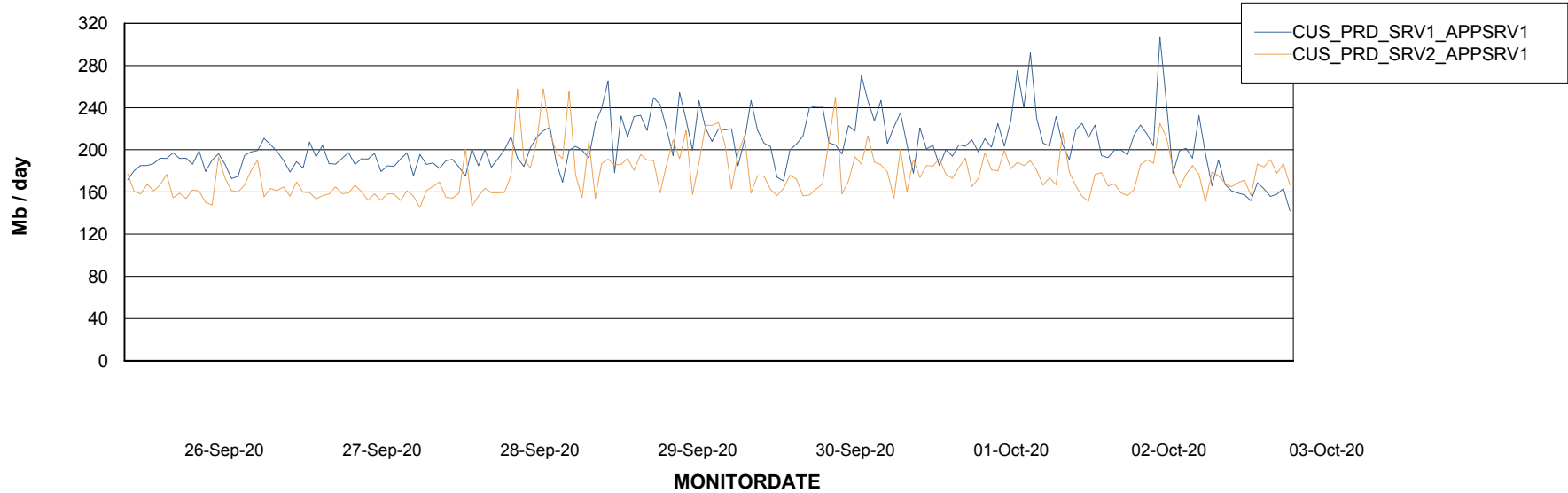
# Weekly SLA Customer Report

Customer CUS Production  
Database ID 84

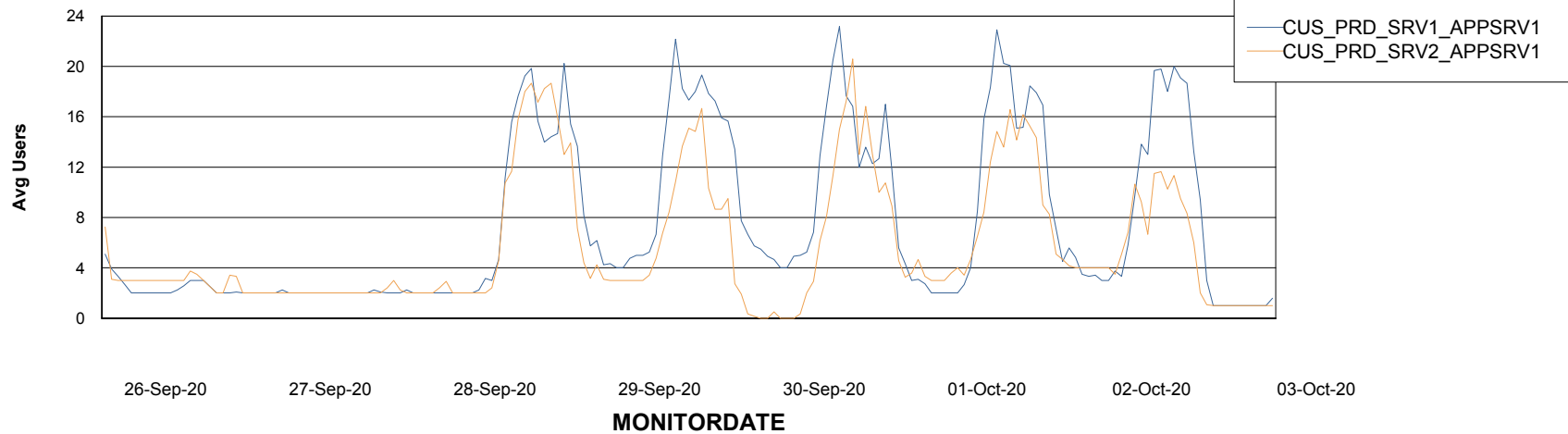


## ABSolute Application Server Services

### Avg memory used per ABS Server Service



### Avg users per day per ABS server



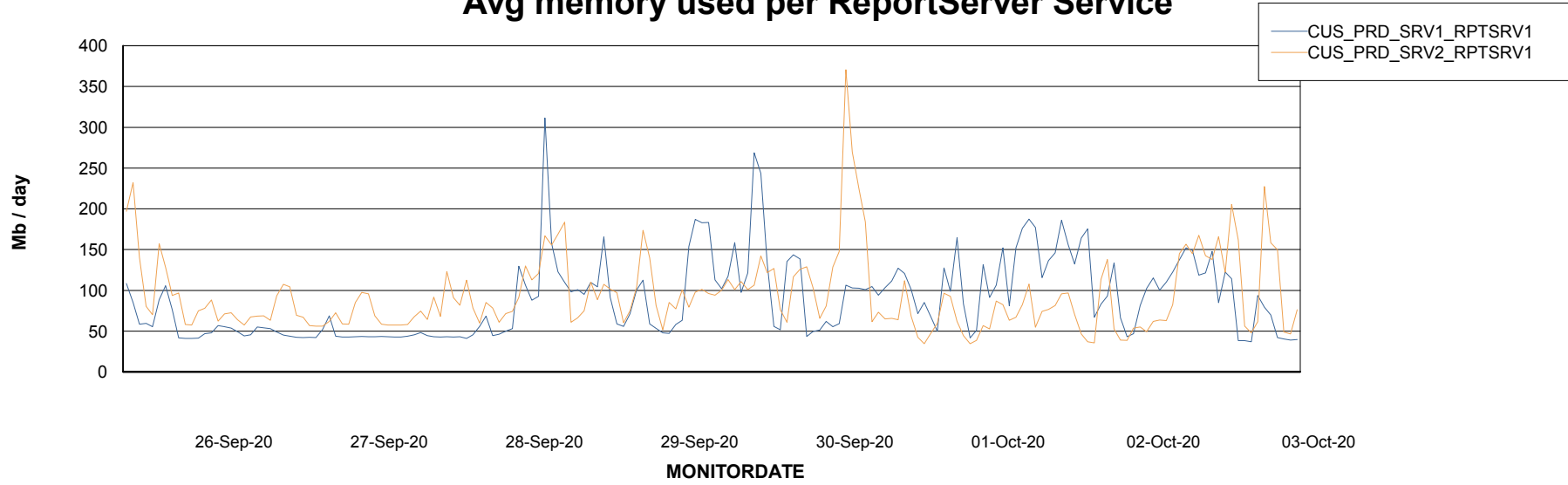
# Weekly SLA Customer Report

Customer CUS Production  
Database ID 84



## ABSolute Web Component Services

### Avg memory used per ReportServer Service



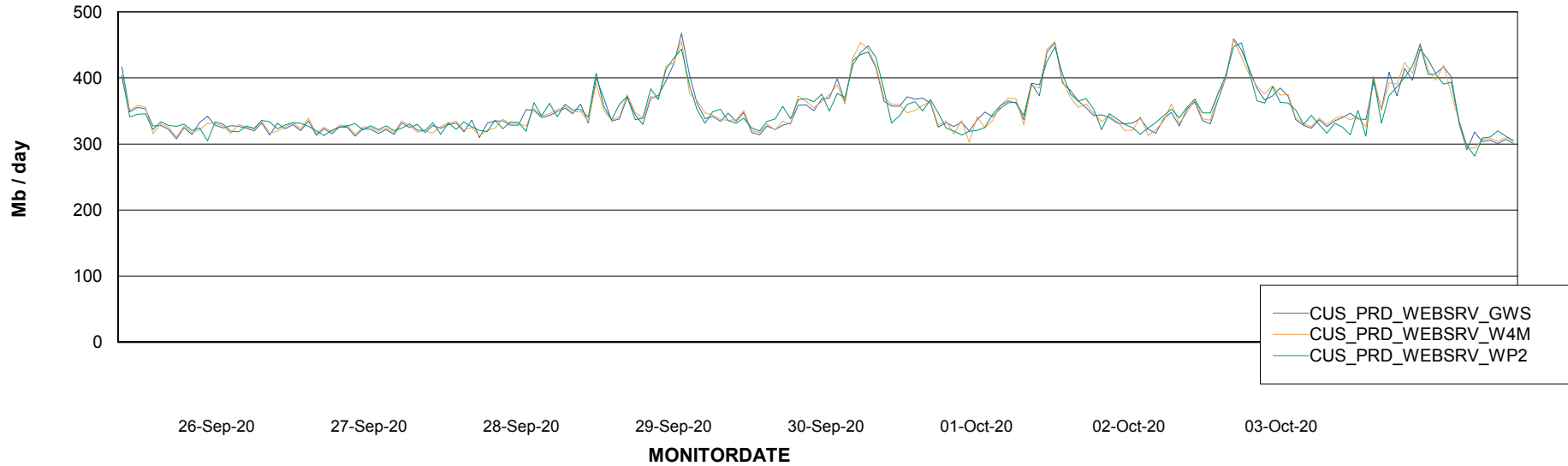
# Weekly SLA Customer Report

Customer CUS Production  
Database ID 84



## ABSSolute Web Component Services

### Avg memory used per ABS Web component



# Weekly SLA Customer Report

Customer CUS Production  
Database ID 84



### Disaster per ABS component

