

Weekly SLA Customer Report

Customer CLO Production
 Database ID 38



Harddisk Usage CLO_PRD_CLOBI

	Free disk space on c: (%)	Total disk space on c: (Gb)	Free disk space on d: (%)	Total disk space on d: (Gb)	Free disk space on e: (%)	Total disk space on e: (Gb)
13-Jul-20	83	279	45	447	86	447
12-Jul-20	83	279	42	447	87	447
11-Jul-20	83	279	40	447	87	447
10-Jul-20	83	279	41	447	87	447
09-Jul-20	83	279	42	447	87	447
08-Jul-20	83	279	43	447	87	447
07-Jul-20	83	279	44	447	87	447

Harddisk Usage CLO_PRD_ORA_01

	Free disk space on c: (%)	Total disk space on c: (Gb)	Free disk space on d: (%)	Total disk space on d: (Gb)	Free disk space on f: (%)	Total disk space on f: (Gb)
13-Jul-20	56	279	31	447	89	447
12-Jul-20	56	279	31	447	90	447
11-Jul-20	56	279	31	447	90	447
10-Jul-20	56	279	31	447	90	447
09-Jul-20	56	279	31	447	90	447
08-Jul-20	56	279	31	447	90	447
07-Jul-20	57	279	31	447	90	447

Weekly SLA Customer Report

Customer CLO Production
 Database ID 38



Harddisk Usage CLO_PRD_ORA_02

	Free disk space on c: (%)	Total disk space on c: (Gb)	Free disk space on d: (%)	Total disk space on d: (Gb)	Free disk space on f: (%)	Total disk space on f: (Gb)
13-Jul-20	77	279	31	447	12	447
12-Jul-20	77	279	31	447	8	447
11-Jul-20	77	279	31	447	9	447
10-Jul-20	77	279	31	447	11	447
09-Jul-20	77	279	31	447	13	447
08-Jul-20	77	279	31	447	15	447
07-Jul-20	77	279	31	447	18	447

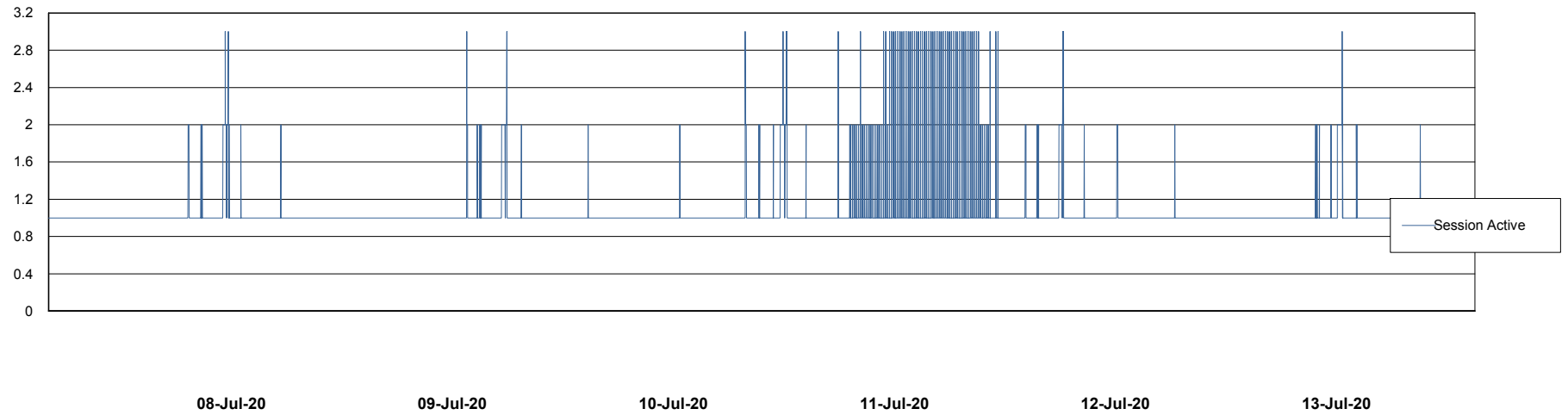
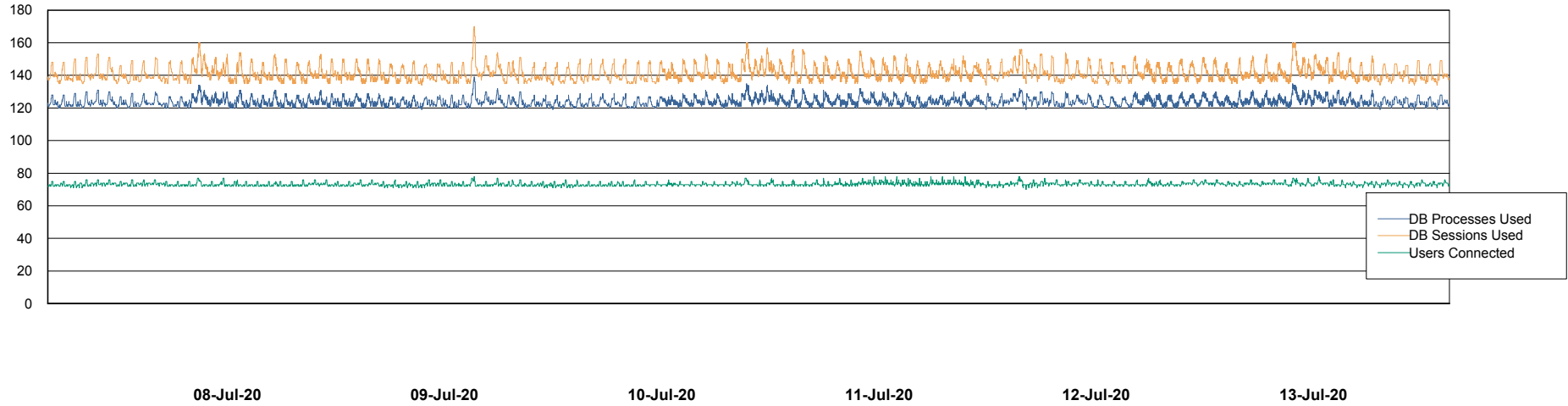
Weekly SLA Customer Report

Customer CLO Production
Database ID 38



Database Performance CLODB_PRD_BI

DB Processes Max 300
DB Sessions Max 480



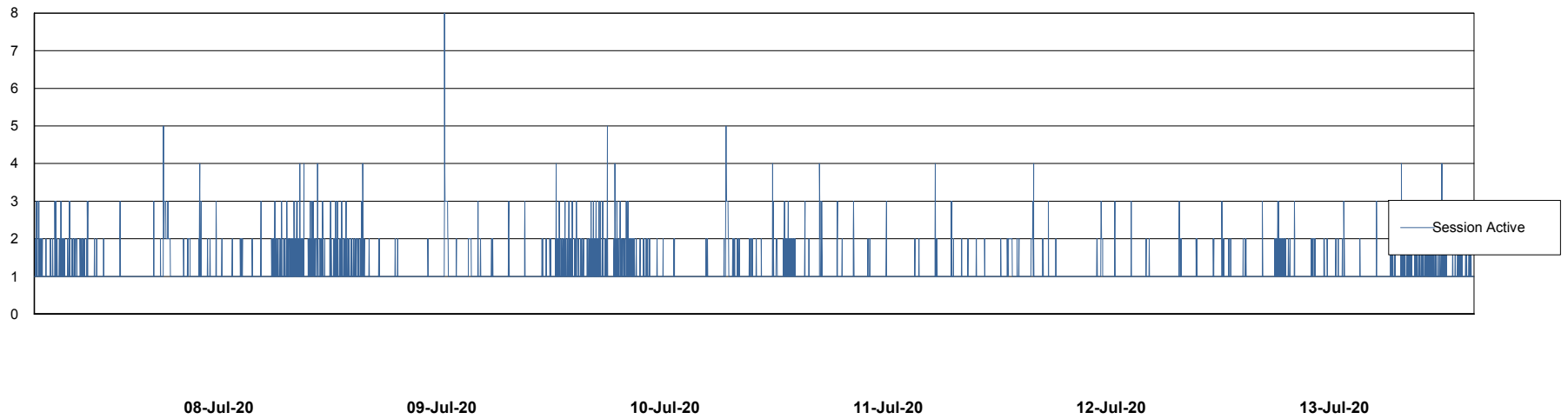
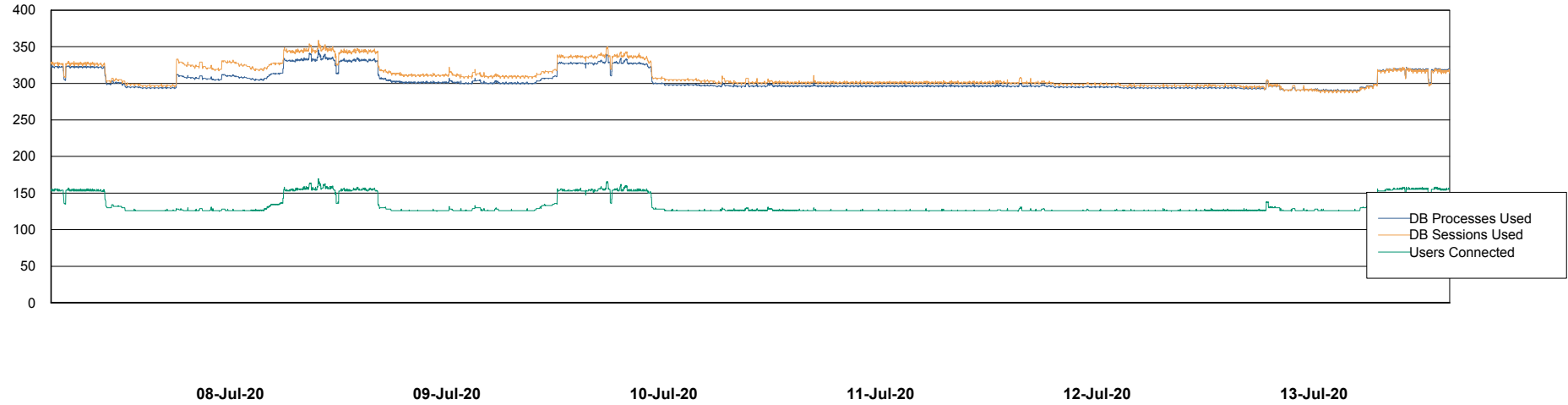
Weekly SLA Customer Report

Customer CLO Production
Database ID 38



Database Performance CLODB_PRD_Production

DB Processes Max 1,000
DB Sessions Max 1,536



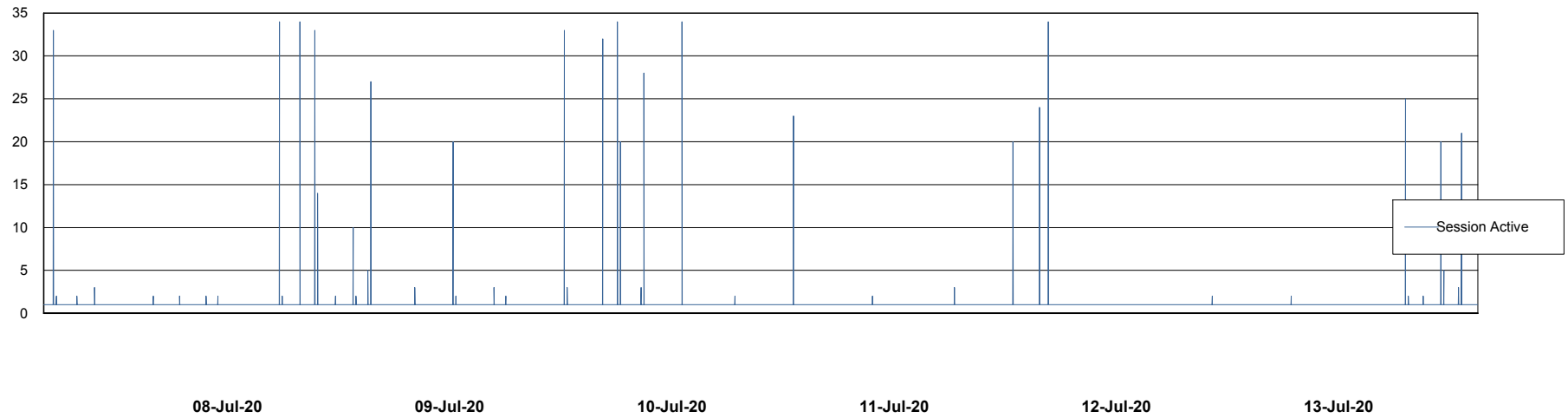
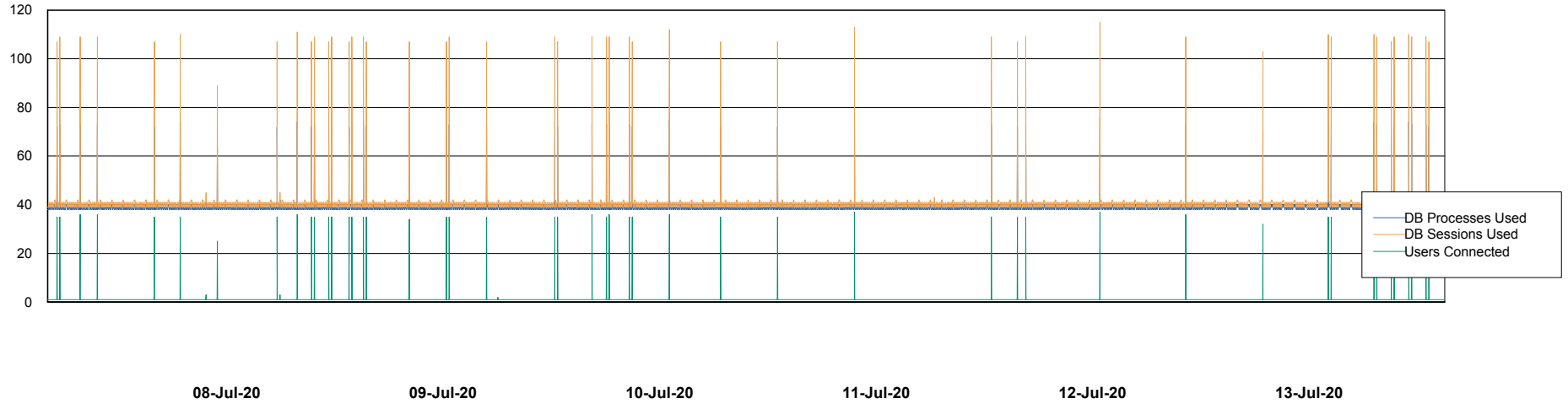
Weekly SLA Customer Report

Customer CLO Production
Database ID 38



Database Performance CLODB_PRD_Standby

DB Processes Max 1,000
DB Sessions Max 1,536



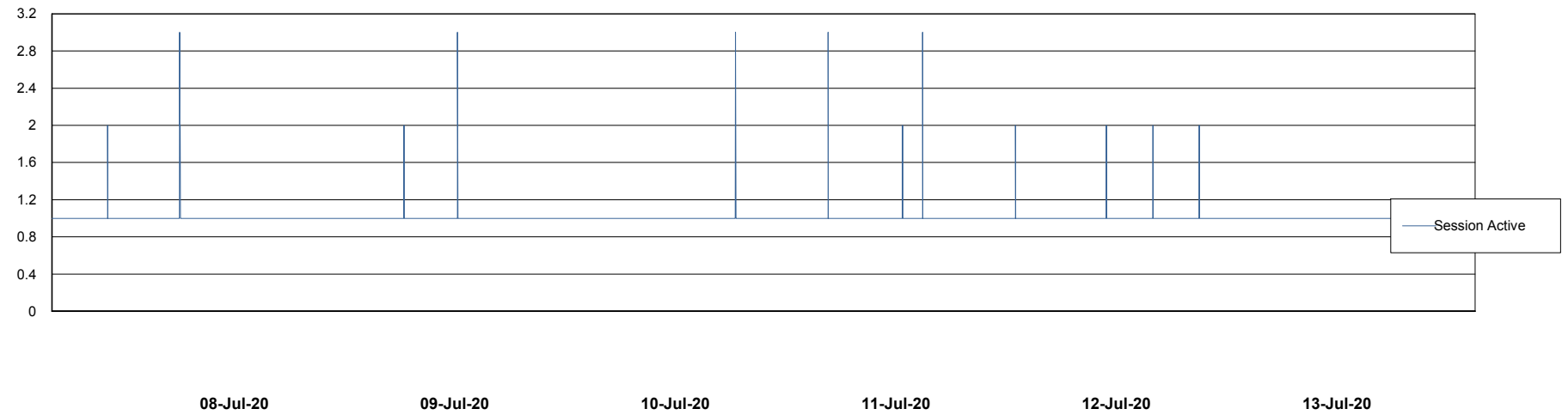
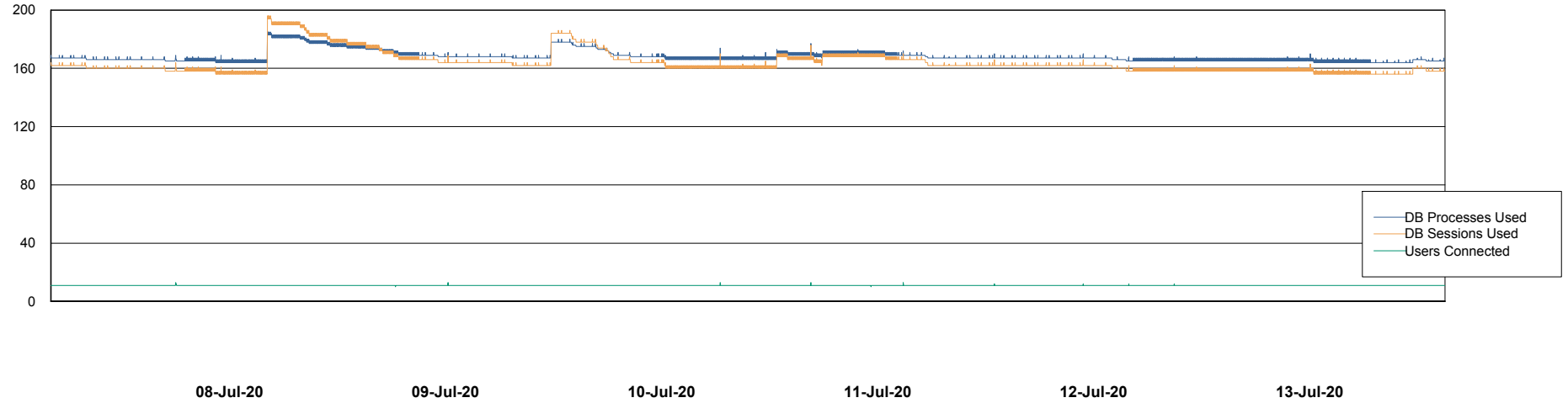
Weekly SLA Customer Report

Customer CLO Production
Database ID 38



Database Performance CLODB_PRD_Test

DB Processes Max 1,000
DB Sessions Max 1,536



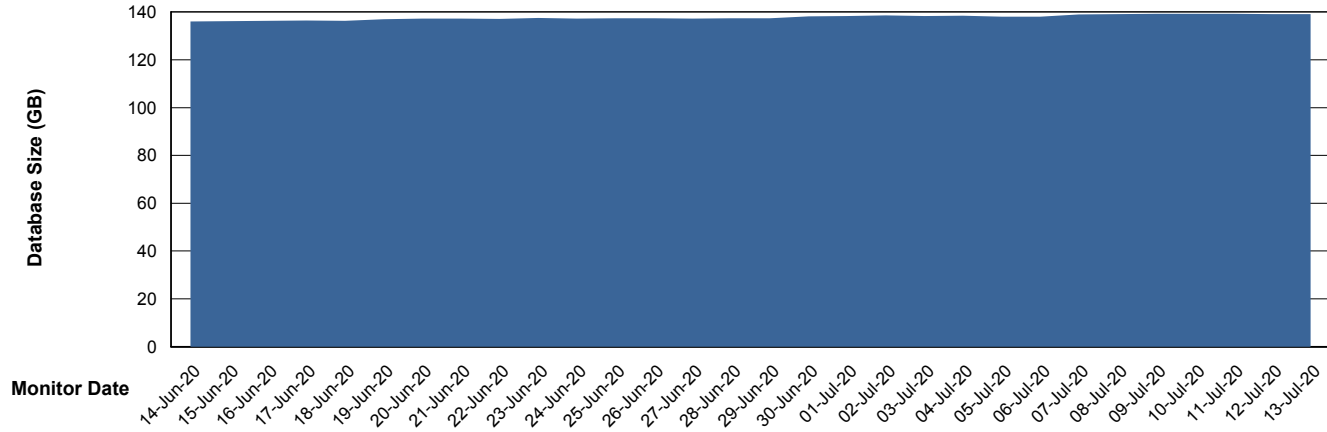
Weekly SLA Customer Report

Customer CLO Production
Database ID 38



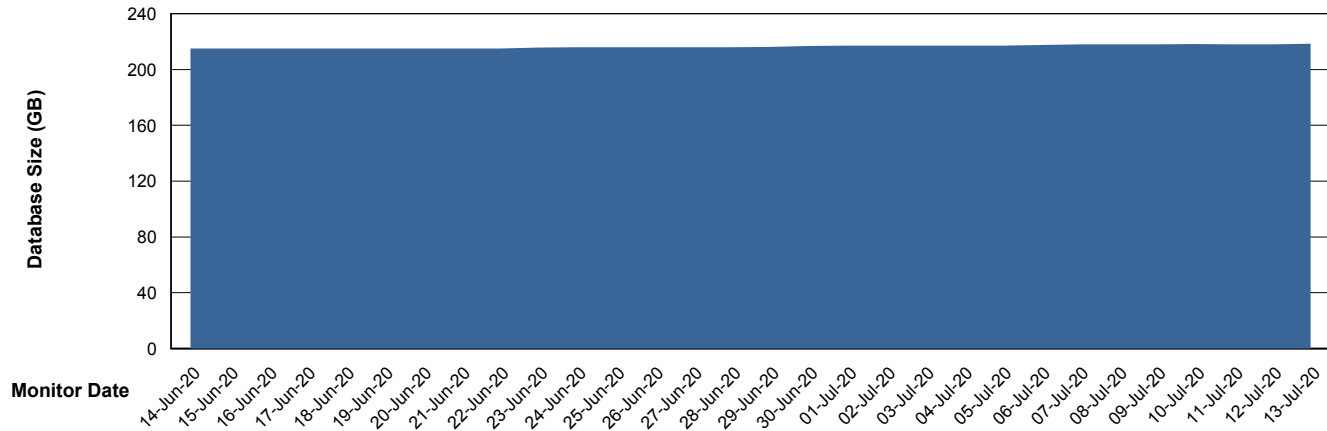
DATABASE SIZE CLODB_PRD_BI

Database growth over last month



DATABASE SIZE CLODB_PRD_Production

Database growth over last month



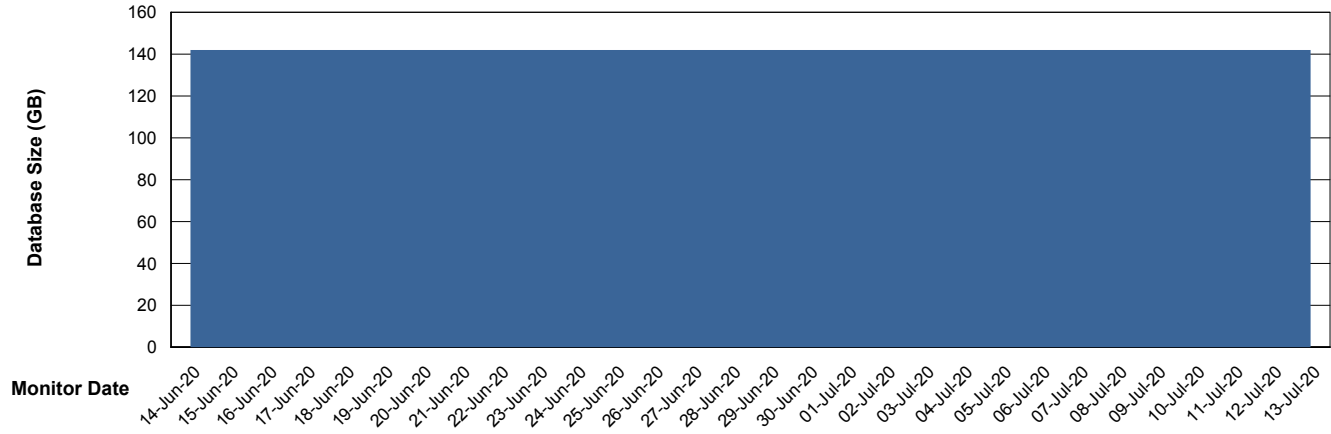
Weekly SLA Customer Report

Customer CLO Production
Database ID 38



DATABASE SIZE CLODB_PRD_Test

Database growth over last month



Weekly SLA Customer Report

Customer CLO Production
 Database ID 38



Database Tablespace CLODB_PRD_BI

Date	Tablespace Name	Filesize (Gb)	Usedsize (Gb)	Percentage free
13-Jul-20	ABSDATA	120	67	44
	INDX	92	70	24
12-Jul-20	ABSDATA	120	67	44
	INDX	92	70	24
11-Jul-20	ABSDATA	120	67	44
	INDX	92	70	24
10-Jul-20	ABSDATA	120	67	44
	INDX	92	70	24
09-Jul-20	ABSDATA	120	67	44
	INDX	92	69	25
08-Jul-20	ABSDATA	120	67	44
	INDX	92	69	25
07-Jul-20	ABSDATA	120	67	44
	INDX	92	69	25

Weekly SLA Customer Report

Customer CLO Production
 Database ID 38



Database Tablespace CLODB_PRD_Production

Date	Tablespace Name	Filesize (Gb)	Usedsize (Gb)	Percentage free
13-Jul-20	ABSDATA	102	68	33
	INDX	155	127	18
12-Jul-20	ABSDATA	102	68	33
	INDX	155	127	18
11-Jul-20	ABSDATA	102	68	33
	INDX	155	127	18
10-Jul-20	ABSDATA	102	68	33
	INDX	155	127	18
09-Jul-20	ABSDATA	102	68	33
	INDX	155	127	18
08-Jul-20	ABSDATA	102	67	34
	INDX	155	127	18
07-Jul-20	ABSDATA	102	67	34
	INDX	155	127	18

Weekly SLA Customer Report

Customer CLO Production
 Database ID 38



Database Tablespace CLODB_PRD_Test

Date	Tablespace Name	Filesize (Gb)	Usedsize (Gb)	Percentage free
13-Jul-20	ABSDATA	88	47	47
	INDX	112	93	17
12-Jul-20	ABSDATA	88	47	47
	INDX	112	93	17
11-Jul-20	ABSDATA	88	47	47
	INDX	112	93	17
10-Jul-20	ABSDATA	88	47	47
	INDX	112	93	17
09-Jul-20	ABSDATA	88	47	47
	INDX	112	93	17
08-Jul-20	ABSDATA	88	47	47
	INDX	112	93	17
07-Jul-20	ABSDATA	88	47	47
	INDX	112	93	17

BI Status and last ETL error for CLODB_PRD_BI

	Tue 7/7/2020	Wed 8/7/2020	Thu 9/7/2020	Fri 10/7/2020	Sat 11/7/2020	Sun 12/7/2020	Mon 13/7/2020
ABS DataWarehouse ETL Health	OK	OK	OK	OK	OK	OK	OK
ABS DWHStaging ETL Health	OK	OK	OK	OK	OK	OK	OK

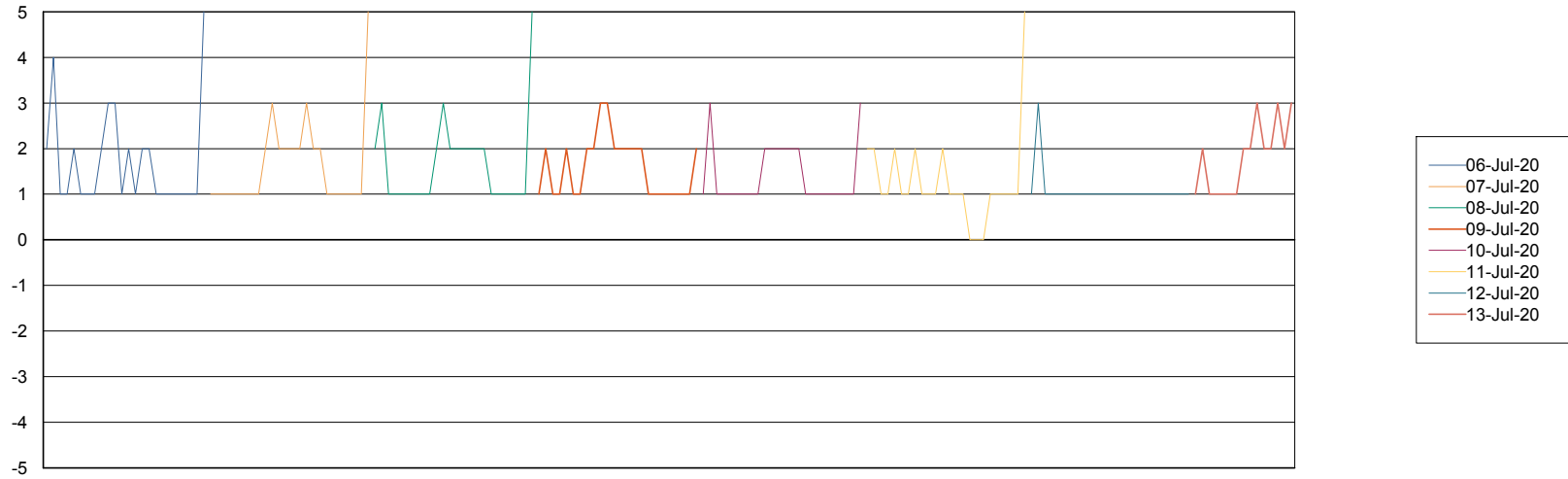
Weekly SLA Customer Report

Customer CLO Production
Database ID 38



Standby Database Health CLO Production

Recovery lag for last 7 days



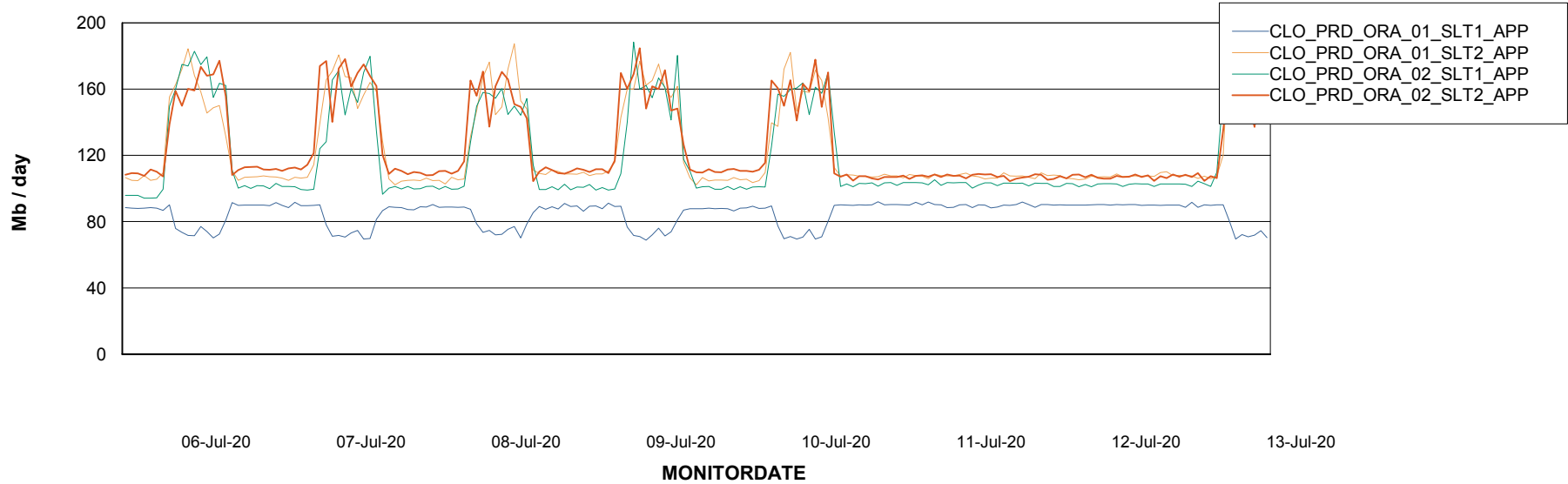
Weekly SLA Customer Report

Customer CLO Production
Database ID 38

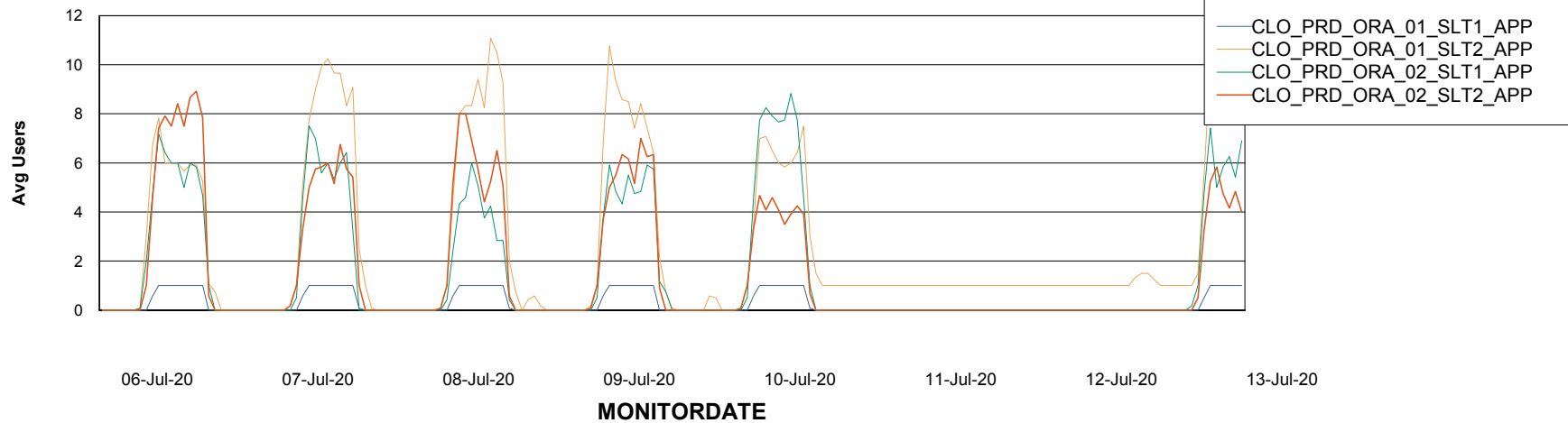


ABSSolute Application Server Services

Avg memory used per ABS Server Service



Avg users per day per ABS server



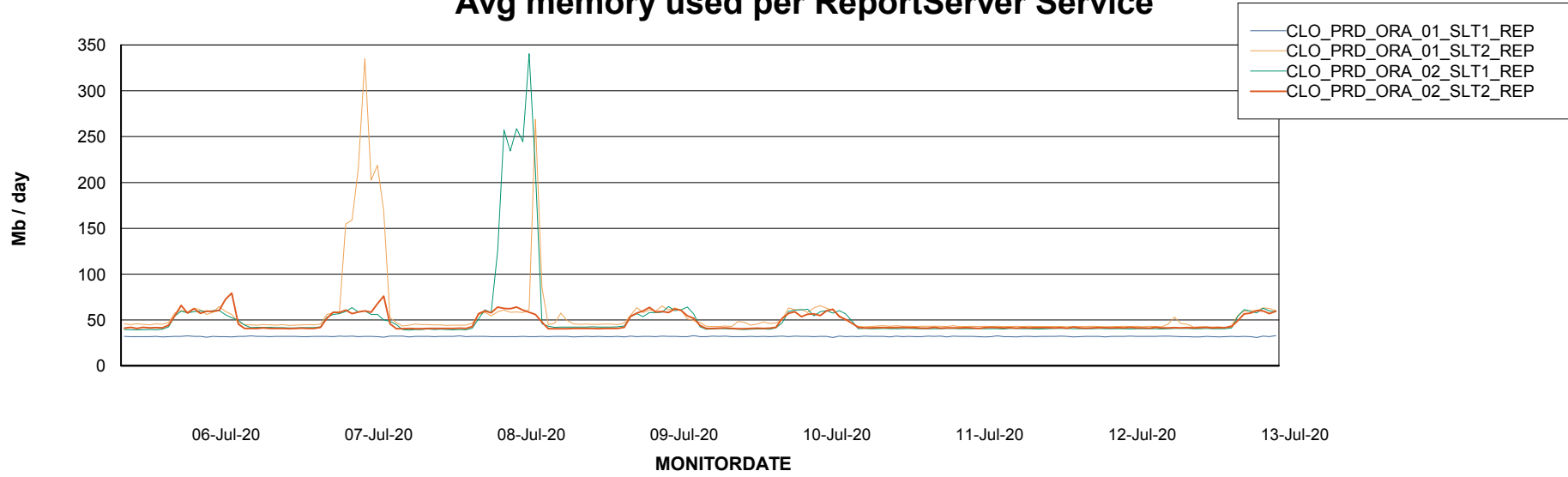
Weekly SLA Customer Report

Customer CLO Production
Database ID 38



ABSSolute Application ReportServer Services

Avg memory used per ReportServer Service



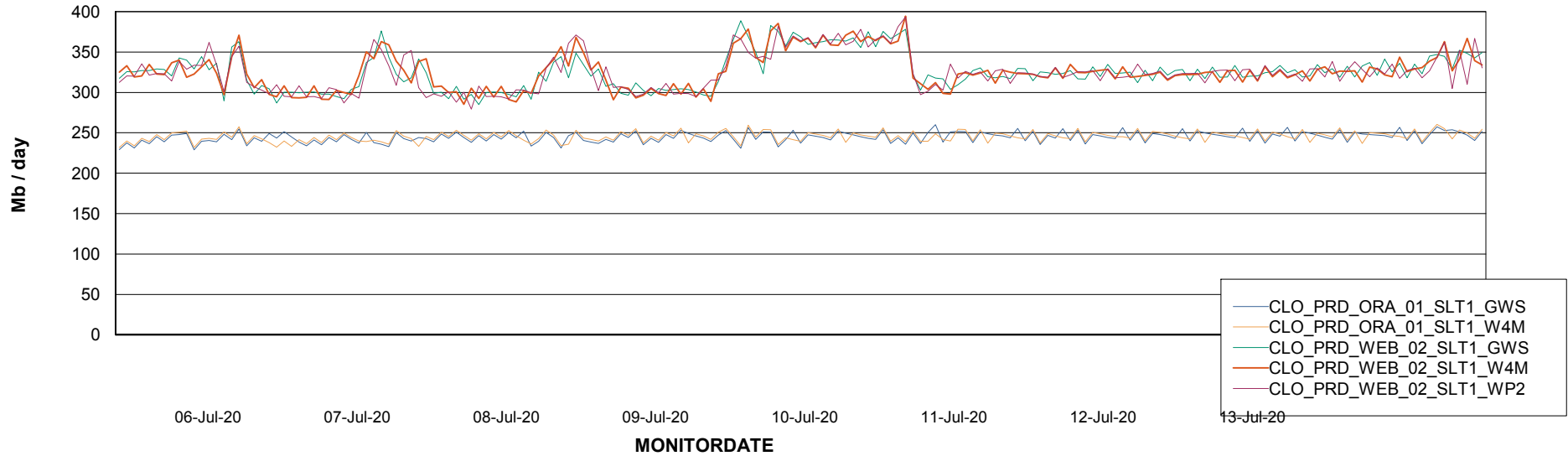
Weekly SLA Customer Report

Customer CLO Production
Database ID 38



ABSSolute Web Component Services

Avg memory used per ABS Web component



Weekly SLA Customer Report

Customer CLO Production
Database ID 38



Disaster per ABS component

