

# Weekly SLA Customer Report

Customer NIX\_Production  
 Database ID 51



Harddisk Usage NIX\_PRD\_ABSAPP01

	Free disk space on c: (%)	Total disk space on c: (Gb)	Free disk space on e: (%)	Total disk space on e: (Gb)
18-Apr-20	80	207	100	98
17-Apr-20	80	207	100	98
16-Apr-20	80	207	100	98
15-Apr-20	80	207	100	98
14-Apr-20	80	207	100	98
13-Apr-20	80	207	100	98
12-Apr-20	80	207	100	98

Harddisk Usage NIX\_PRD\_ABSAPP03

	Free disk space on c: (%)	Total disk space on c: (Gb)
18-Apr-20	85	300
17-Apr-20	85	300
16-Apr-20	85	300
15-Apr-20	86	300
14-Apr-20	86	300
13-Apr-20	86	300
12-Apr-20	87	300

# Weekly SLA Customer Report

Customer NIX\_Production  
Database ID 51



## Harddisk Usage NIX\_PRD\_ABSWEB02

	Free disk space on c: (%)	Total disk space on c: (Gb)
18-Apr-20	90	300
17-Apr-20	90	300
16-Apr-20	90	300
15-Apr-20	90	300
14-Apr-20	90	300
13-Apr-20	90	300
12-Apr-20	90	300

## Harddisk Usage NIX\_PRD\_ORACLE\_BI

	Free disk space on c: (%)	Total disk space on c: (Gb)
18-Apr-20	46	836
17-Apr-20	46	836
16-Apr-20	46	836
15-Apr-20	46	836
14-Apr-20	46	836
13-Apr-20	46	836
12-Apr-20	46	836

# Weekly SLA Customer Report

Customer NIX\_Production  
 Database ID 51



Harddisk Usage NIX\_PRD\_ORCDB1

	Free disk space on c: (%)	Total disk space on c: (Gb)	Free disk space on d: (%)	Total disk space on d: (Gb)	Free disk space on e: (%)	Total disk space on e: (Gb)	Free disk space on f: (%)	Total disk space on f: (Gb)
18-Apr-20	45	554	74	586	71	605	56	293
17-Apr-20	45	554	73	586	70	605	56	293
16-Apr-20	45	554	74	586	71	605	57	293
15-Apr-20	45	554	74	586	71	605	58	293
14-Apr-20	45	554	74	586	71	605	59	293
13-Apr-20	44	554	74	586	71	605	60	293
12-Apr-20	44	554	74	586	71	605	58	293

Harddisk Usage NIX\_PRD\_ORCDB2

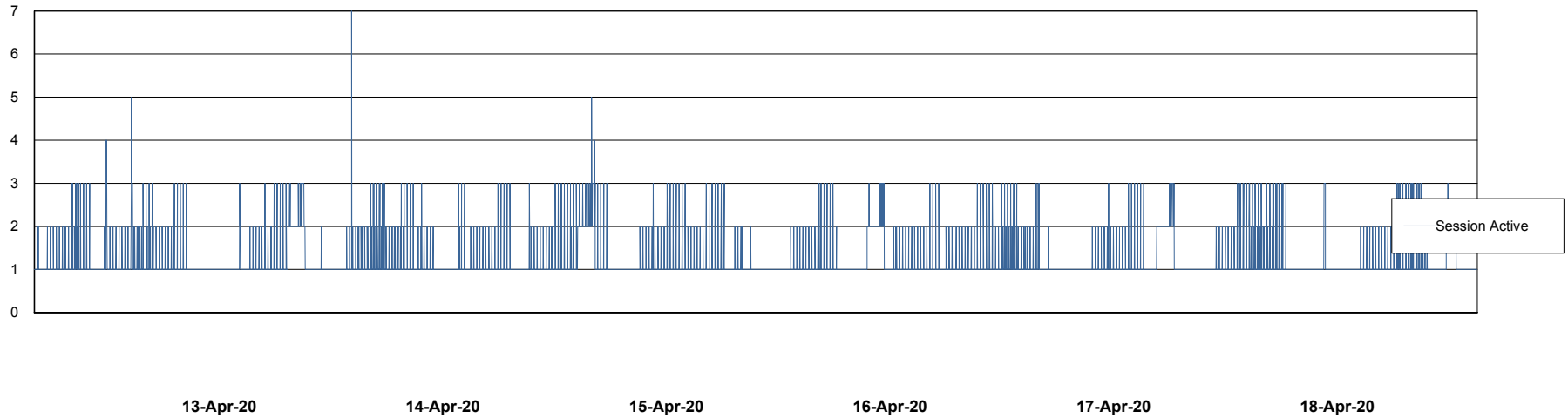
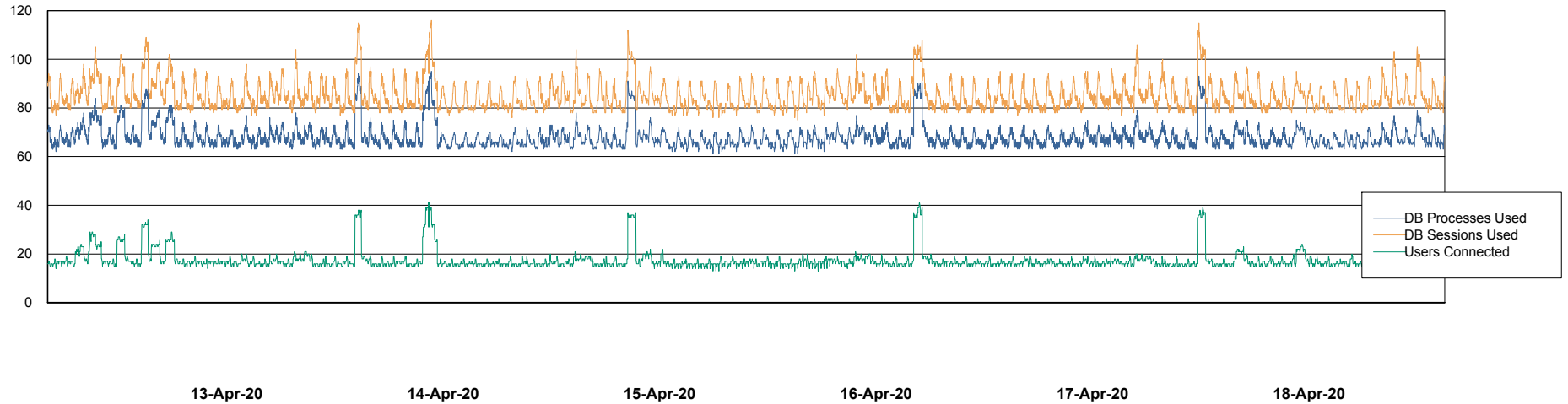
	Free disk space on c: (%)	Total disk space on c: (Gb)	Total disk space on d: (Gb)	Free disk space on e: (%)	Total disk space on e: (Gb)	Free disk space on f: (%)	Total disk space on f: (Gb)
18-Apr-20	93	574	488	74	684	88	488
17-Apr-20	93	574	488	74	684	88	488
16-Apr-20	93	574	488	74	684	89	488
15-Apr-20	93	574	488	74	684	89	488
14-Apr-20	93	574	488	74	684	90	488
13-Apr-20	93	574	488	74	684	91	488
12-Apr-20	93	574	488	74	684	90	488

# Weekly SLA Customer Report

Customer NIX\_Production  
Database ID 51



## Database Performance NIXDB\_BI

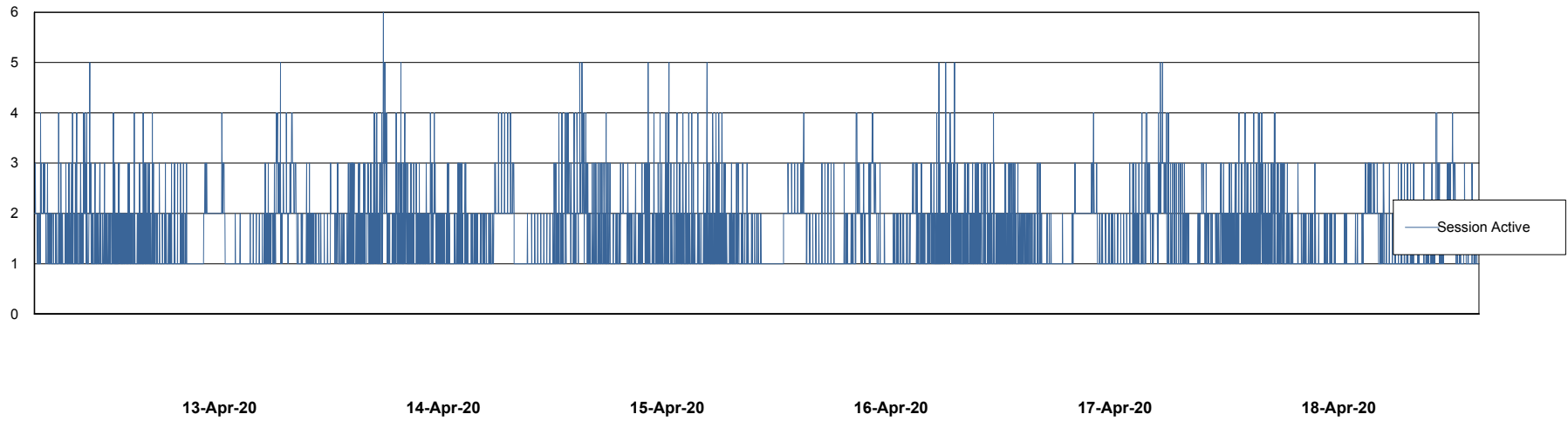
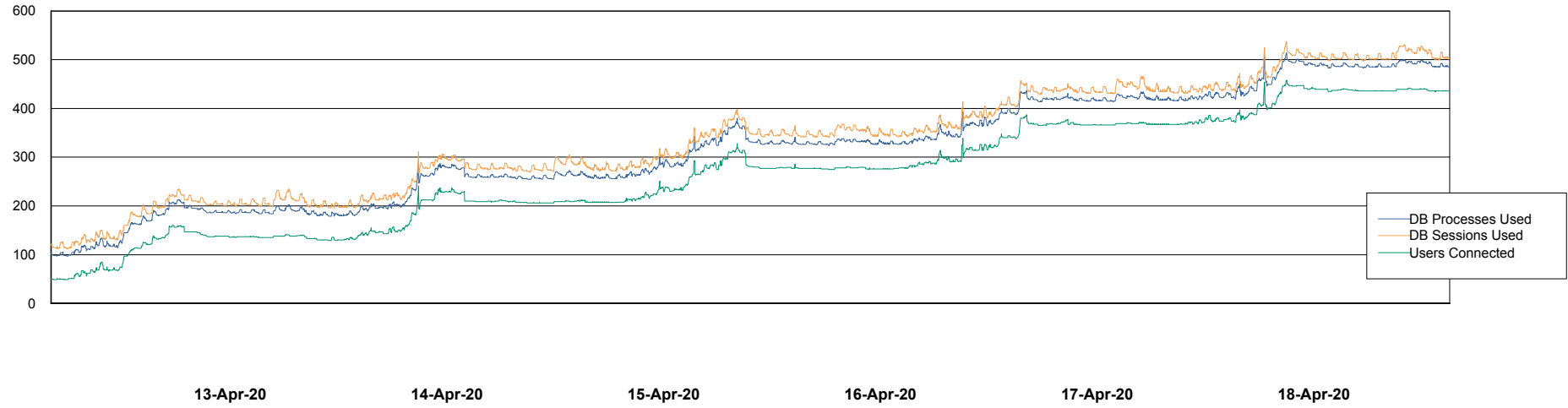


# Weekly SLA Customer Report

Customer NIX\_Production  
Database ID 51



## Database Performance NIXDB\_Production

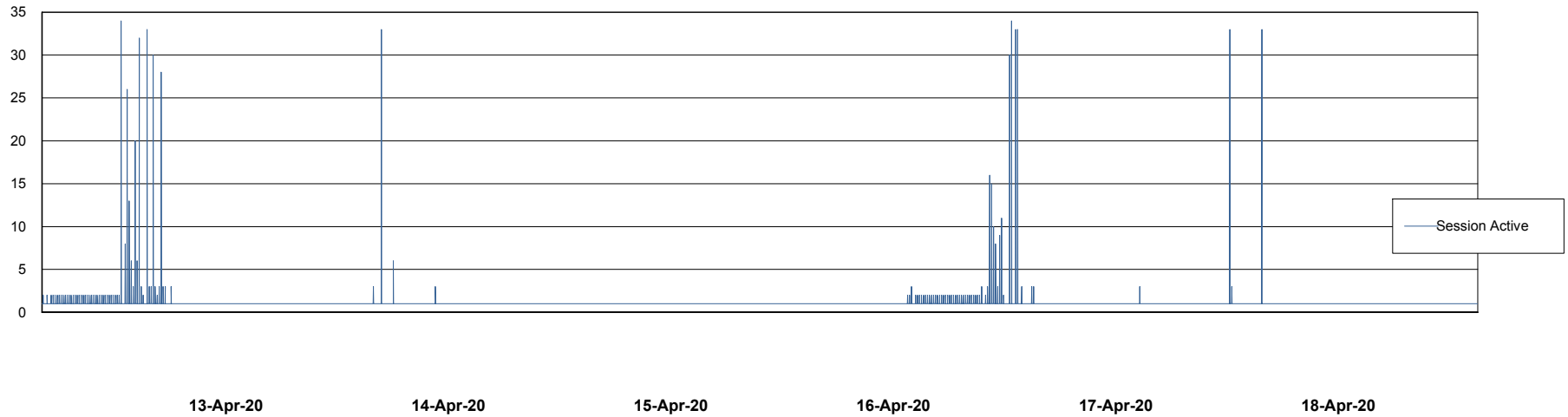
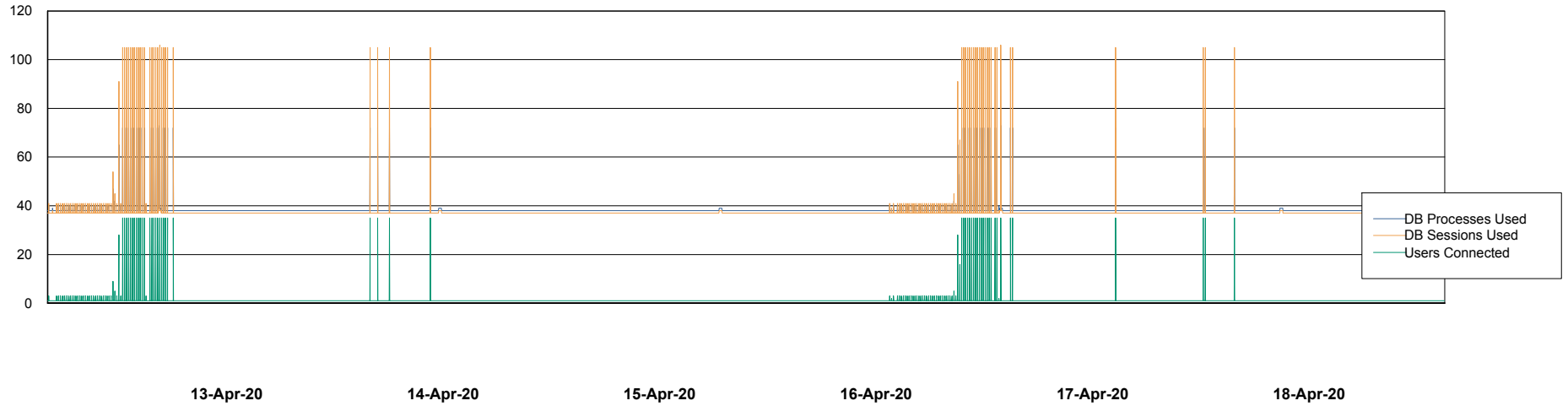


# Weekly SLA Customer Report

Customer NIX\_Production  
Database ID 51



## Database Performance NIXDB\_Standby



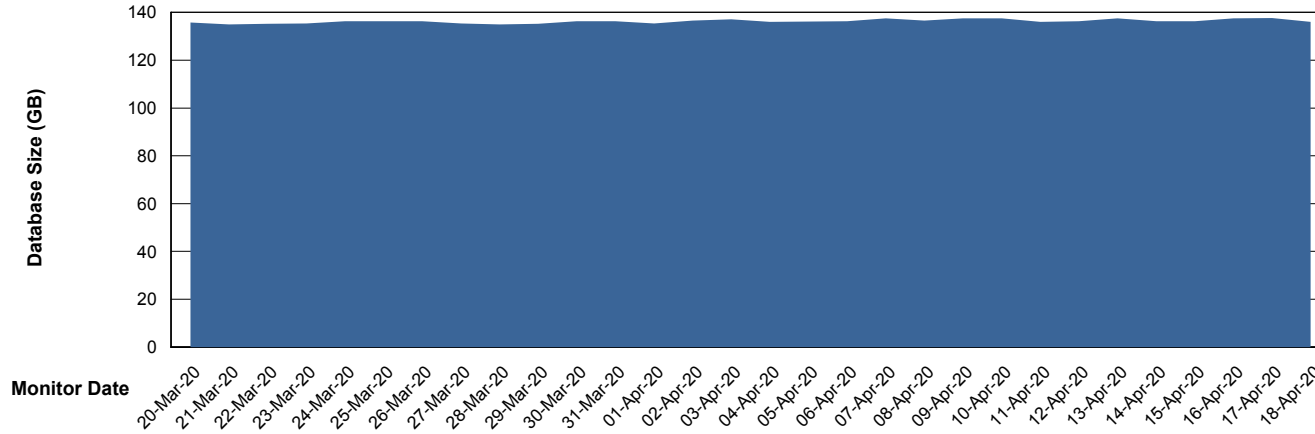
# Weekly SLA Customer Report

Customer NIX\_Production  
Database ID 51



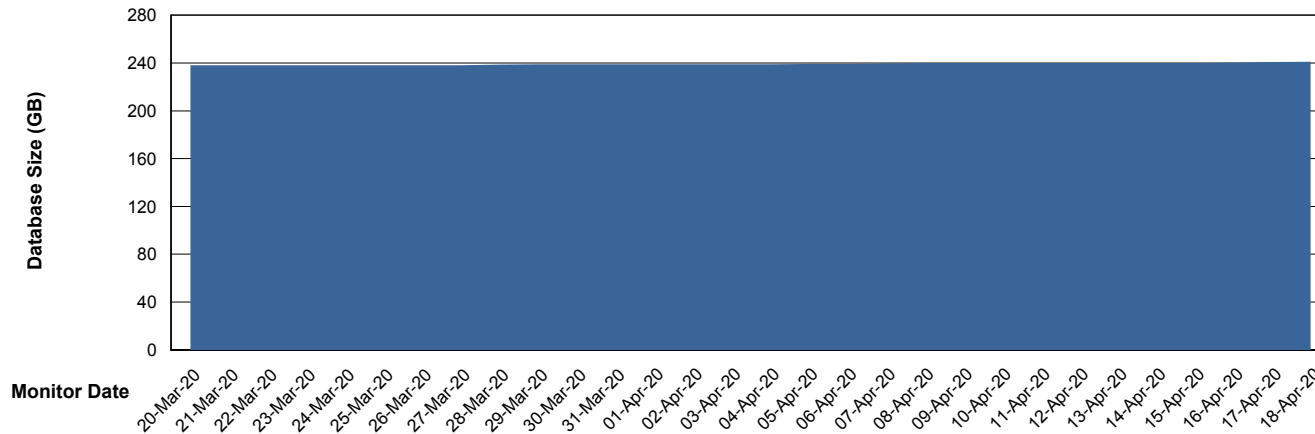
DATABASE SIZE NIXDB\_BI

### Database growth over last month



DATABASE SIZE NIXDB\_Production

### Database growth over last month



# Weekly SLA Customer Report

Customer NIX\_Production  
 Database ID 51



Database Tablespace NIXDB\_BI

Date	Tablespace Name	Filesize (Gb)	Usedsize (Gb)	Percentage free
18-Apr-20	ABSDATA	80	66	18
	INDX	84	68	19
17-Apr-20	ABSDATA	80	66	18
	INDX	84	68	19
16-Apr-20	ABSDATA	80	66	18
	INDX	84	68	19
15-Apr-20	ABSDATA	80	66	18
	INDX	84	68	19
14-Apr-20	ABSDATA	80	66	18
	INDX	84	68	19
13-Apr-20	ABSDATA	80	66	18
	INDX	84	68	19
12-Apr-20	ABSDATA	80	66	18
	INDX	84	68	19

# Weekly SLA Customer Report

Customer NIX\_Production  
 Database ID 51

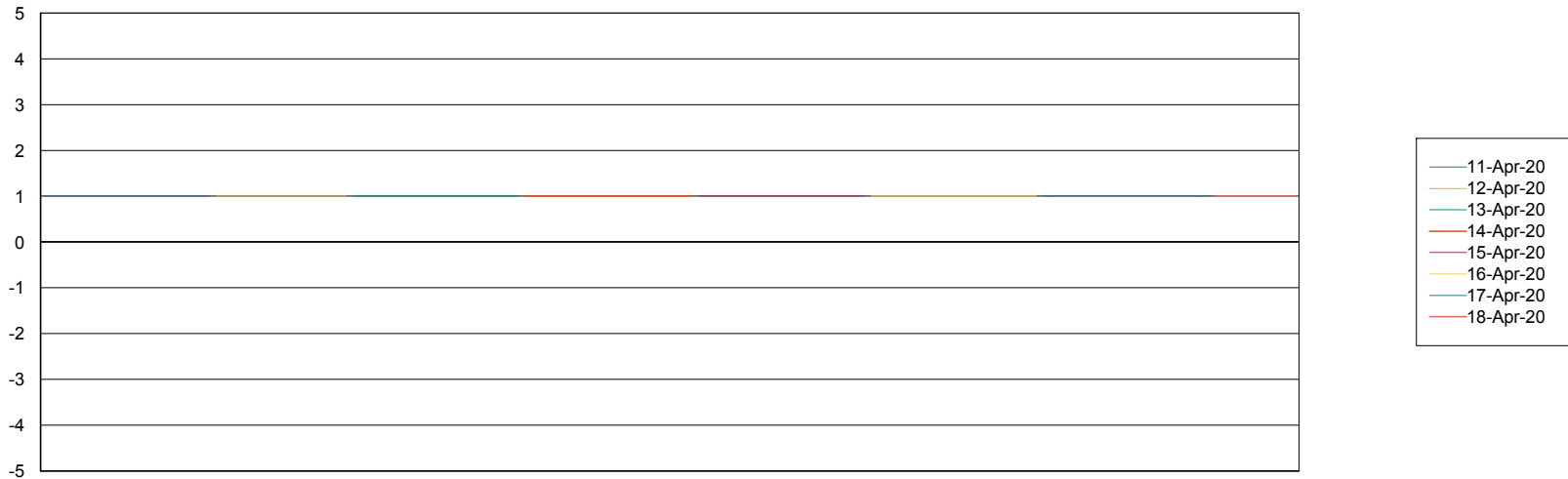


## Database Tablespace NIXDB\_Production

Date	Tablespace Name	Filesize (Gb)	Usedsize (Gb)	Percentage free
18-Apr-20	ABSDATA	98	82	16
	INDX	176	145	18
17-Apr-20	ABSDATA	98	82	16
	INDX	176	145	18
16-Apr-20	ABSDATA	98	82	16
	INDX	176	145	18
15-Apr-20	ABSDATA	98	82	16
	INDX	176	145	18
14-Apr-20	ABSDATA	98	82	16
	INDX	176	145	18
13-Apr-20	ABSDATA	98	82	16
	INDX	176	145	18
12-Apr-20	ABSDATA	98	81	17
	INDX	176	145	18

## Standby Database Health NIX\_Production

Recovery lag for last 7 days



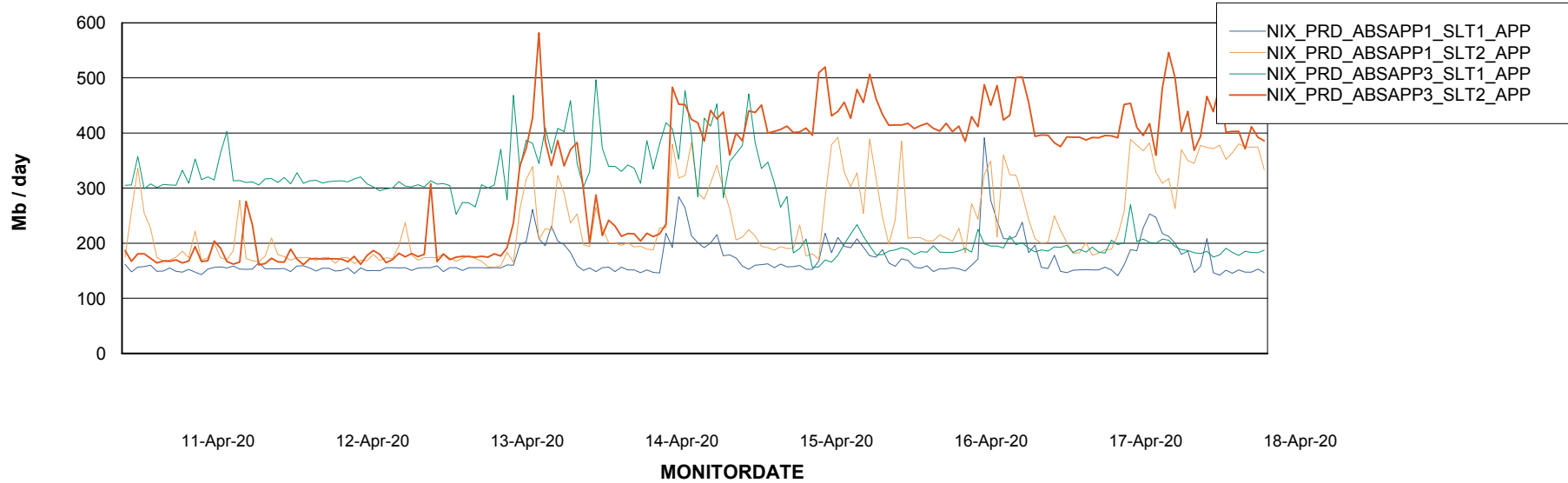
# Weekly SLA Customer Report

Customer NIX\_Production  
Database ID 51

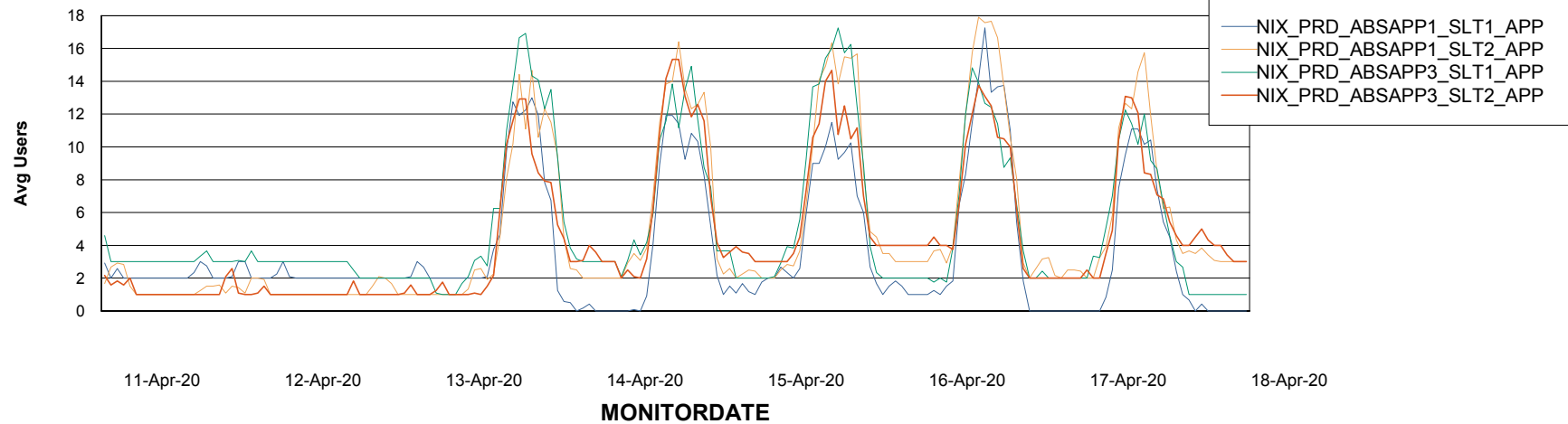


## ABSSolute Application Server Services

### Avg memory used per ABS Server Service



### Avg users per day per ABS server



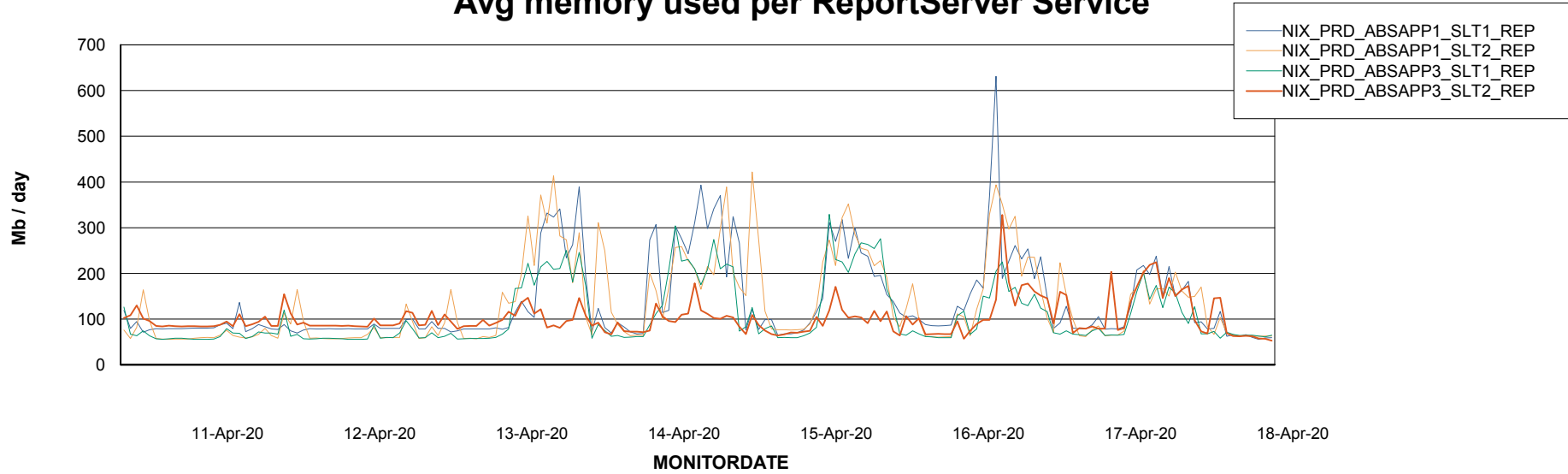
# Weekly SLA Customer Report

Customer NIX\_Production  
Database ID 51



## ABSSolute Application ReportServer Services

### Avg memory used per ReportServer Service



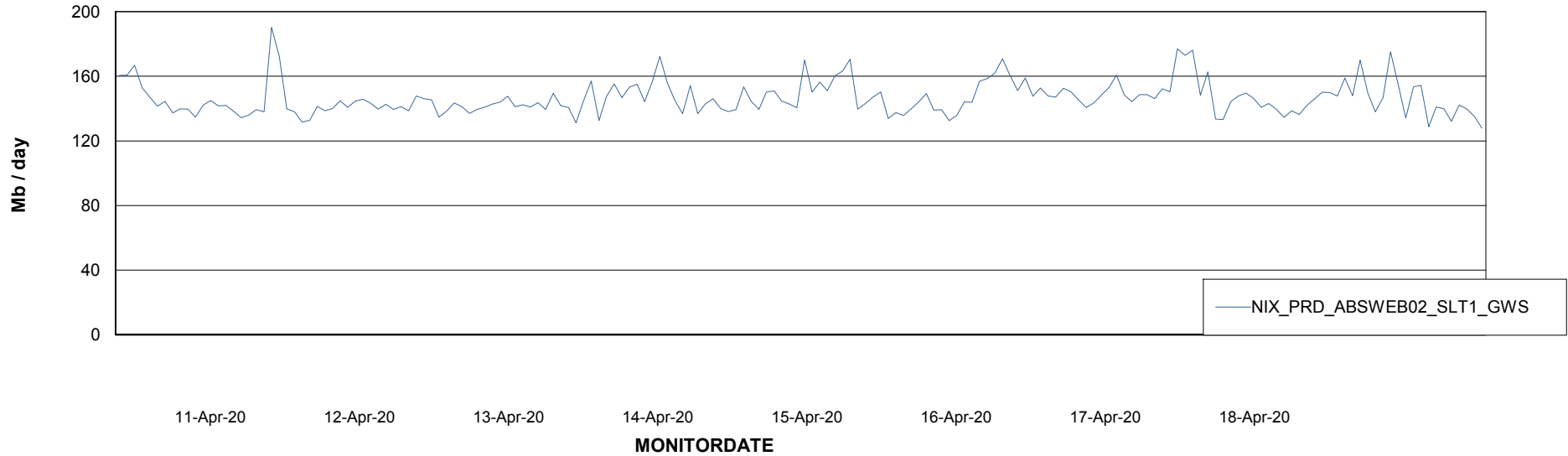
# Weekly SLA Customer Report

Customer NIX\_Production  
Database ID 51



## ABSSolute Web Component Services

### Avg memory used per ABS Web component



# Weekly SLA Customer Report

Customer NIX\_Production  
Database ID 51



## Disaster per ABS component

