

# Weekly SLA Customer Report

Customer AUJ\_Production  
Database ID 41



## Harddisk Usage AUJ\_PRD\_ABS\_APP1

	Free disk space on / (%)	Total disk space on / (Gb)	Used disk space on / (Gb)
28-Mar-20	25	241	171
27-Mar-20	25	241	171
26-Mar-20	25	241	171
25-Mar-20	25	241	171
24-Mar-20	25	241	171
23-Mar-20	25	241	171
22-Mar-20	25	241	171

## Harddisk Usage AUJ\_PRD\_ABS\_APP2

	Free disk space on / (%)	Total disk space on / (Gb)	Used disk space on / (Gb)
28-Mar-20	44	241	128
27-Mar-20	44	241	128
26-Mar-20	44	241	128
25-Mar-20	44	241	128
24-Mar-20	44	241	128
23-Mar-20	44	241	128
22-Mar-20	44	241	128

# Weekly SLA Customer Report

Customer AUJ\_Production  
 Database ID 41



Harddisk Usage AUJ\_PRD\_ABS\_APP3

	Free disk space on / (%)	Total disk space on / (Gb)	Used disk space on / (Gb)
28-Mar-20	91	247	22
27-Mar-20	91	247	22
26-Mar-20	91	247	22
25-Mar-20	91	247	22
24-Mar-20	91	247	22
23-Mar-20	91	247	22
22-Mar-20	91	247	22

Harddisk Usage AUJ\_PRD\_ORACLE4

	Free disk space on / (%)	Total disk space on / (Gb)	Used disk space on / (Gb)	Free disk space on /bk (%)	Total disk space on /bk (Gb)	Used disk space on /bk (Gb)	Free disk space on /data (%)	Total disk space on /data (Gb)	Used disk space on /da /data
28-Mar-20	98	534	12	59	4,436	1,710	72	4,436	1,194
27-Mar-20	98	534	12	59	4,436	1,738	72	4,436	1,194
26-Mar-20	98	534	12	59	4,436	1,738	72	4,436	1,194
25-Mar-20	98	534	12	59	4,436	1,735	72	4,436	1,194
24-Mar-20	98	534	12	59	4,436	1,734	72	4,436	1,194
23-Mar-20	98	534	12	59	4,436	1,734	72	4,436	1,194
22-Mar-20	98	534	12	59	4,436	1,725	72	4,436	1,194

# Weekly SLA Customer Report

Customer AUJ\_Production  
 Database ID 41



Harddisk Usage AUJ\_PRD\_ORACLE5

	Free disk space on / (%)	Total disk space on / (Gb)	Used disk space on / (Gb)	Free disk space on /bk (%)	Total disk space on /bk (Gb)	Used disk space on /bk (Gb)	Free disk space on /data (%)	Total disk space on /data (Gb)	Used disk space on /da /data
28-Mar-20	97	534	16	94	4,436	233	72	4,436	1,174
27-Mar-20	97	534	16	94	4,436	236	72	4,436	1,174
26-Mar-20	97	534	16	94	4,436	236	72	4,436	1,174
25-Mar-20	97	534	16	94	4,436	237	72	4,436	1,174
24-Mar-20	97	534	16	94	4,436	238	72	4,436	1,174
23-Mar-20	97	534	16	95	4,436	230	72	4,436	1,174
22-Mar-20	97	534	16	95	4,436	223	72	4,436	1,174

Harddisk Usage AUJ\_PRD\_ORACLE6

	Free disk space on / (%)	Total disk space on / (Gb)	Used disk space on / (Gb)	Free disk space on /bk (%)	Total disk space on /bk (Gb)	Used disk space on /bk (Gb)	Free disk space on /data (%)	Total disk space on /data (Gb)	Used disk space on /da /data
28-Mar-20	87	534	67	87	534	67	72	4,436	1,166
27-Mar-20	86	534	71	86	534	71	72	4,436	1,166
26-Mar-20	86	534	72	86	534	72	72	4,436	1,166
25-Mar-20	86	534	72	86	534	72	72	4,436	1,166
24-Mar-20	86	534	72	86	534	72	72	4,436	1,166
23-Mar-20	88	534	62	88	534	62	72	4,436	1,166
22-Mar-20	89	534	56	89	534	56	72	4,436	1,166

# Weekly SLA Customer Report

Customer AUJ\_Production  
Database ID 41



Harddisk Usage AUJ\_PRD\_ORACLE\_BI1

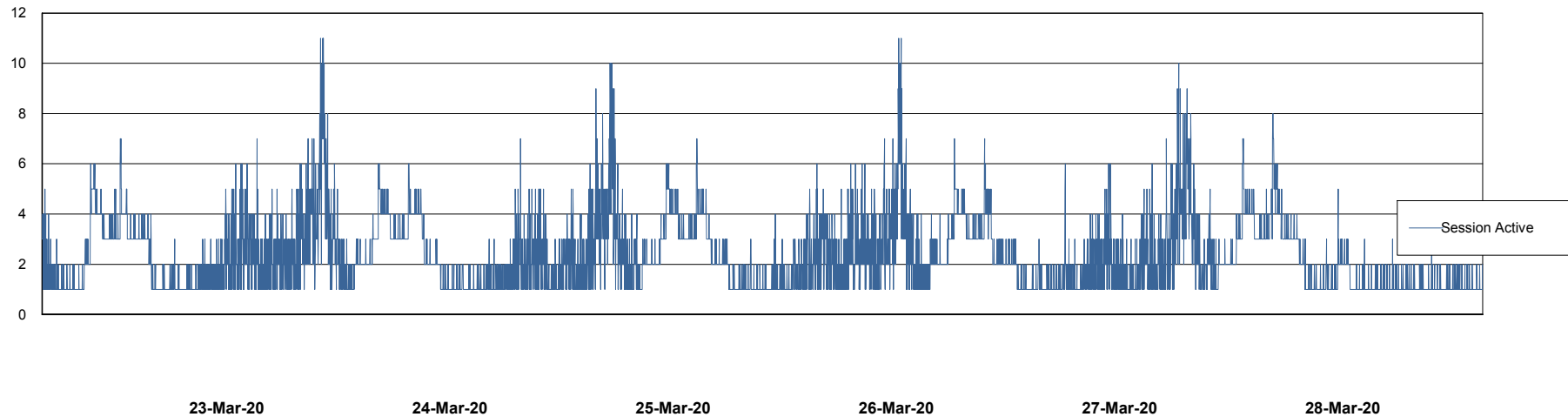
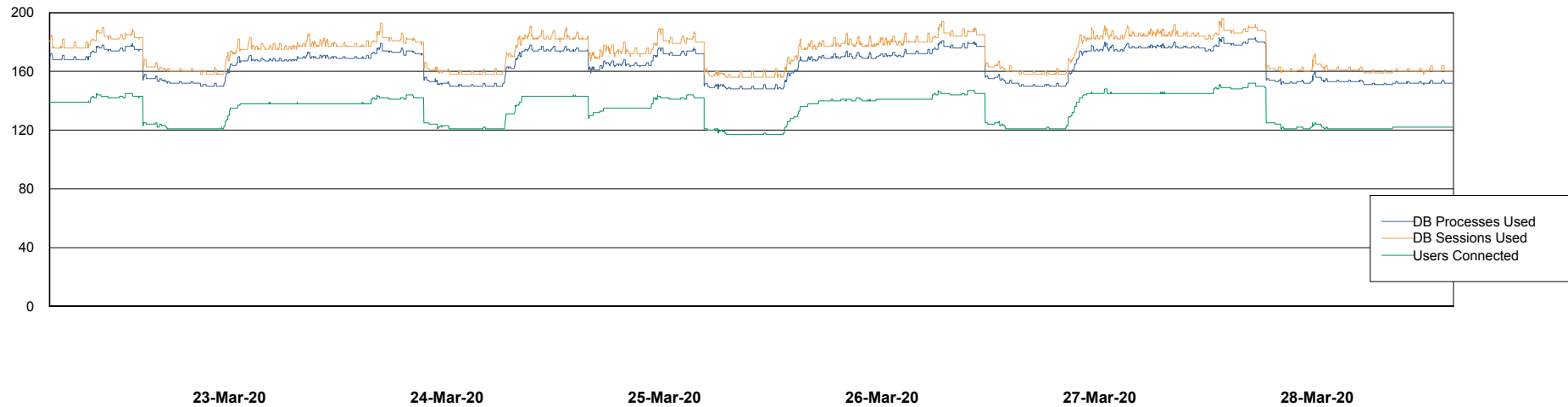
	Free disk space on / (%)	Total disk space on / (Gb)	Used disk space on / (Gb)
28-Mar-20	26	526	366
27-Mar-20	27	526	364
26-Mar-20	27	526	363
25-Mar-20	27	526	363
24-Mar-20	27	526	363
23-Mar-20	27	526	363
22-Mar-20	27	526	366

# Weekly SLA Customer Report

Customer AUJ\_Production  
Database ID 41



## Database Performance AUJ\_DB4\_Primary

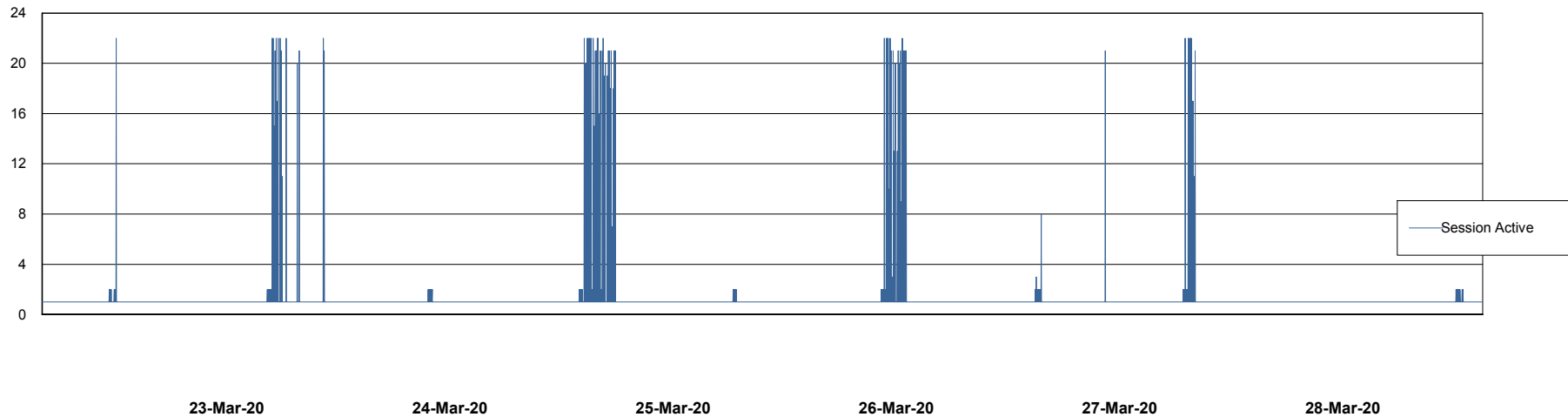
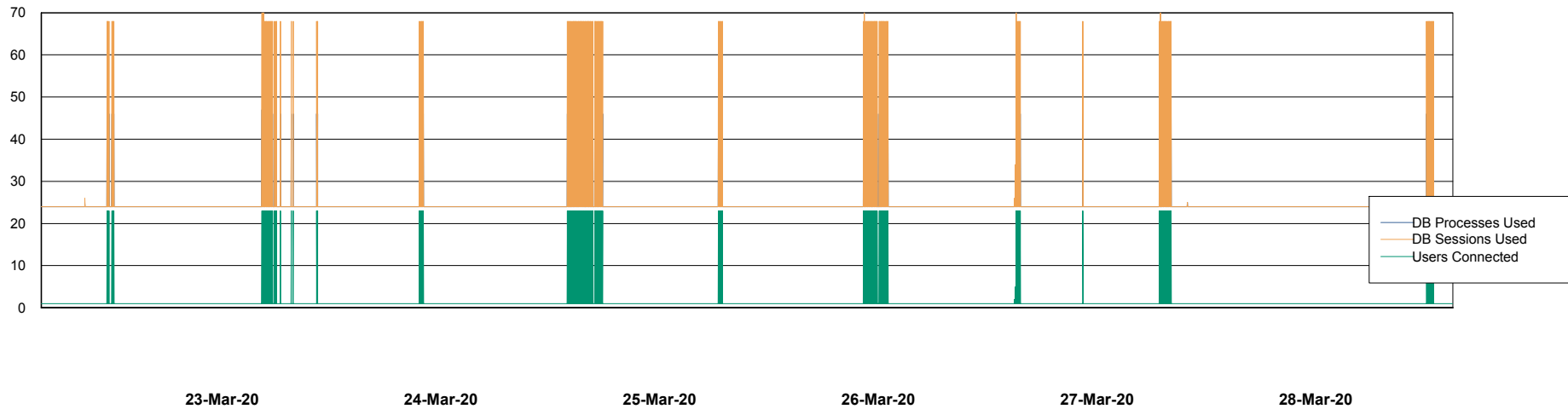


# Weekly SLA Customer Report

Customer AUJ\_Production  
Database ID 41



## Database Performance AUJ\_DB5\_Standby

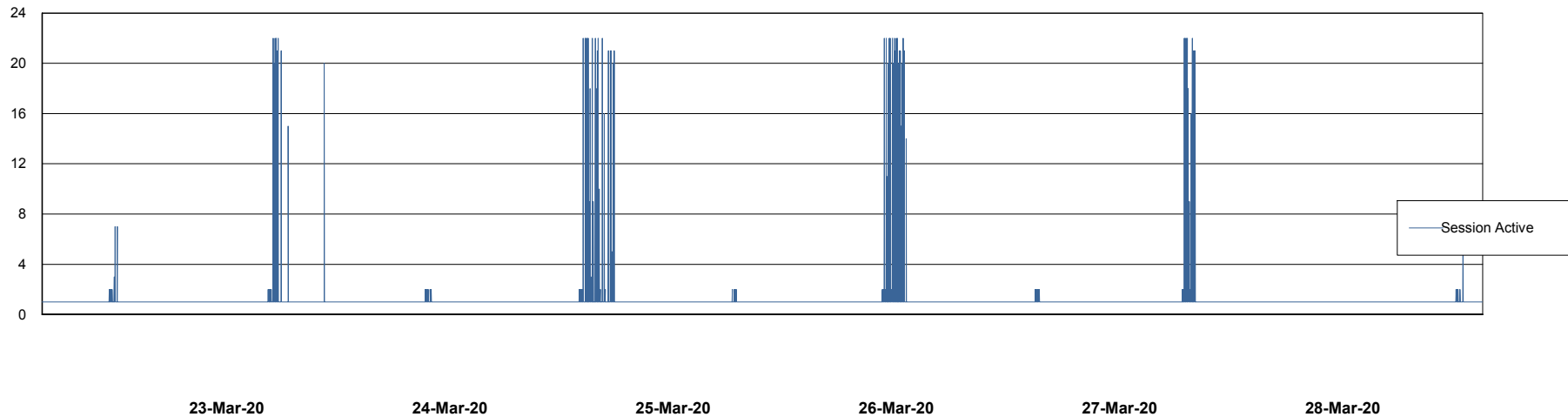
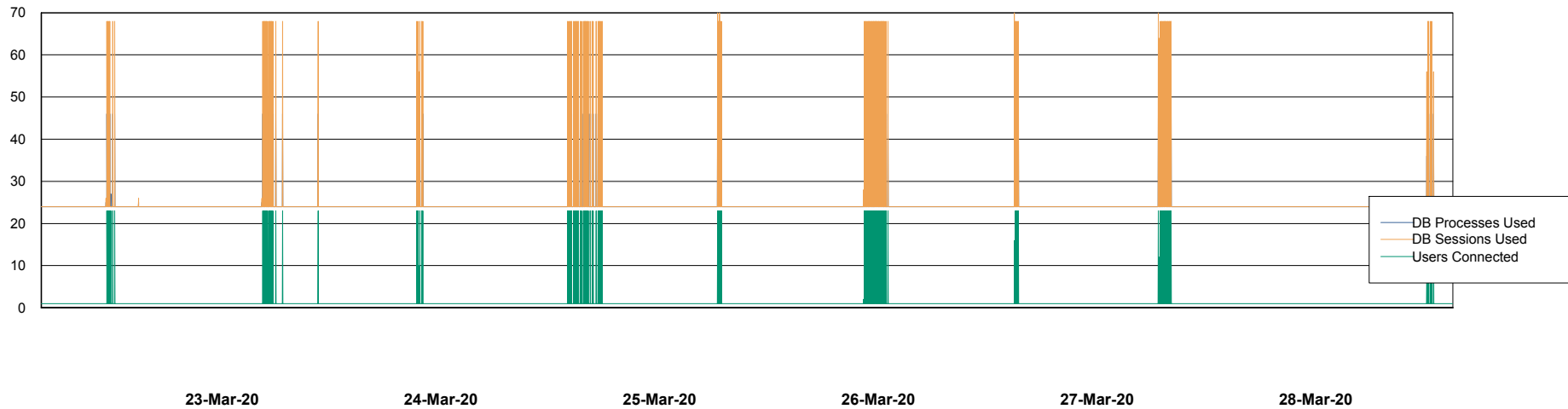


# Weekly SLA Customer Report

Customer AUJ\_Production  
Database ID 41



## Database Performance AUJ\_DB6\_Standby2

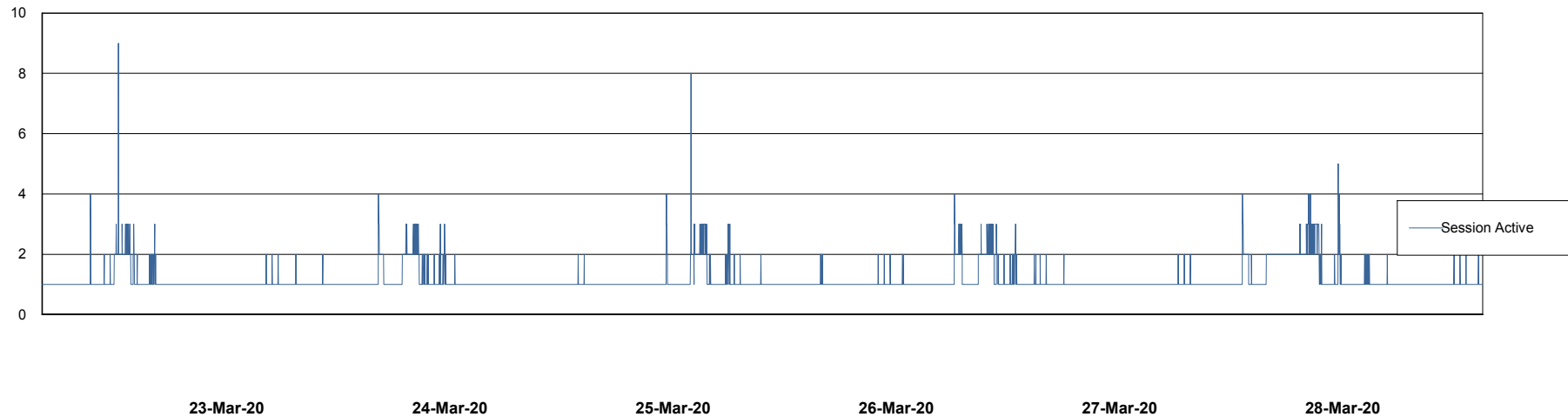
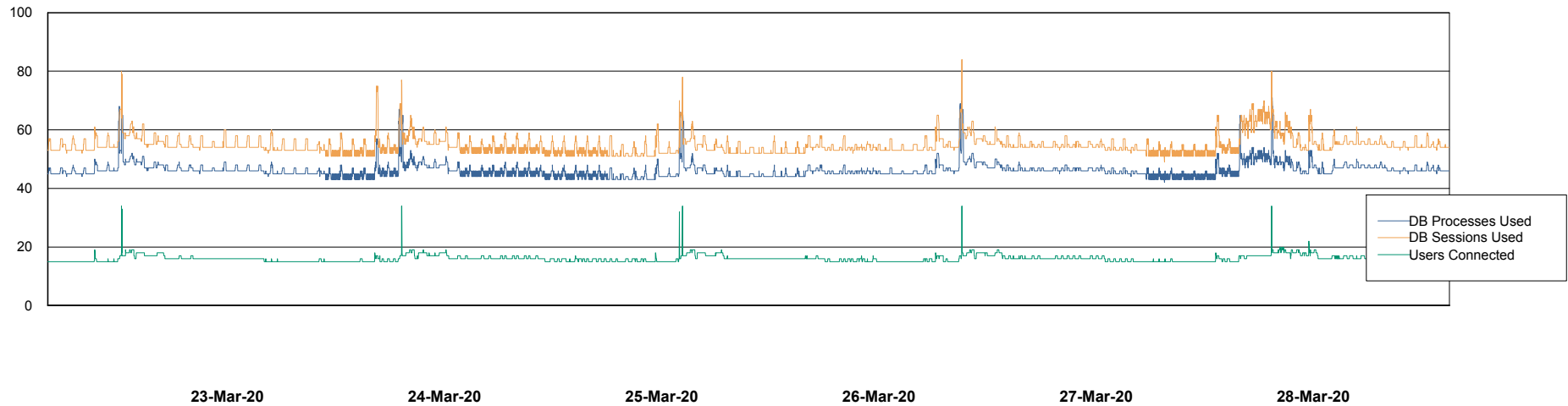


# Weekly SLA Customer Report

Customer AUJ\_Production  
Database ID 41



## Database Performance AUJDB\_BI

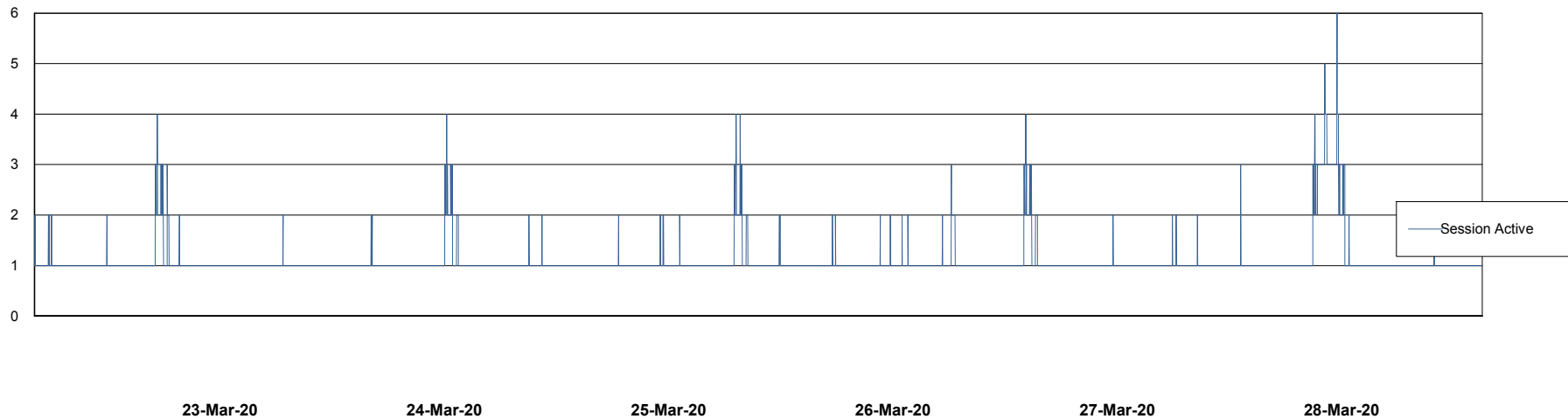
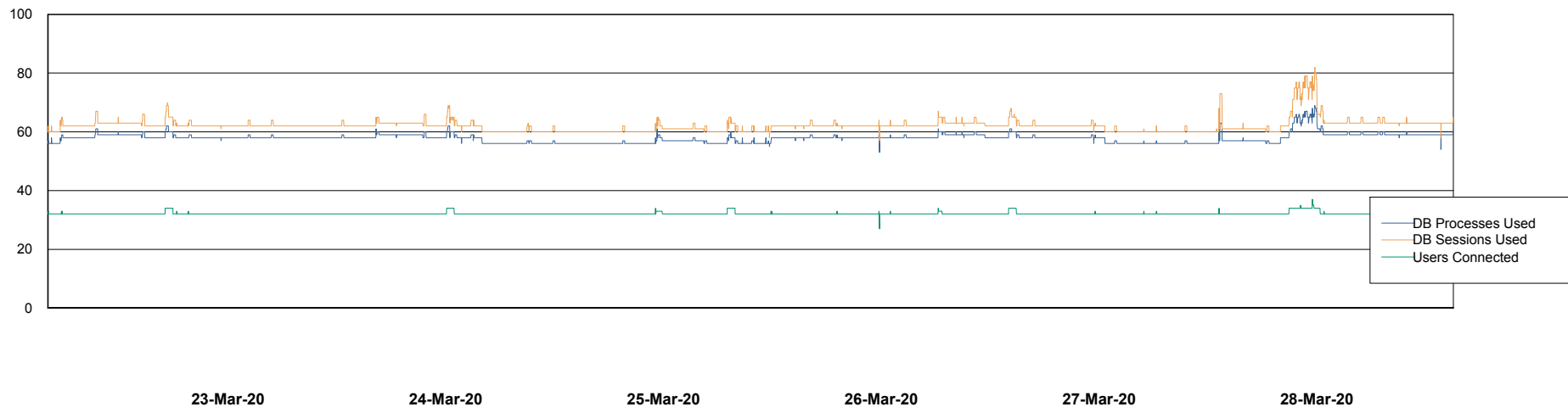


# Weekly SLA Customer Report

Customer AUJ\_Production  
Database ID 41



## Database Performance AUJDB\_BI\_TS1



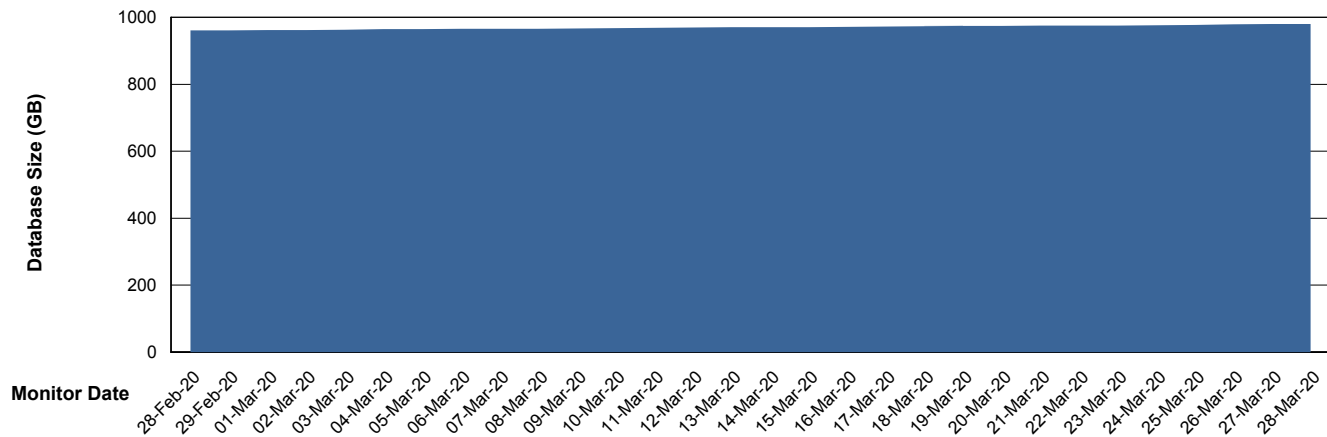
# Weekly SLA Customer Report

Customer AUJ\_Production  
Database ID 41



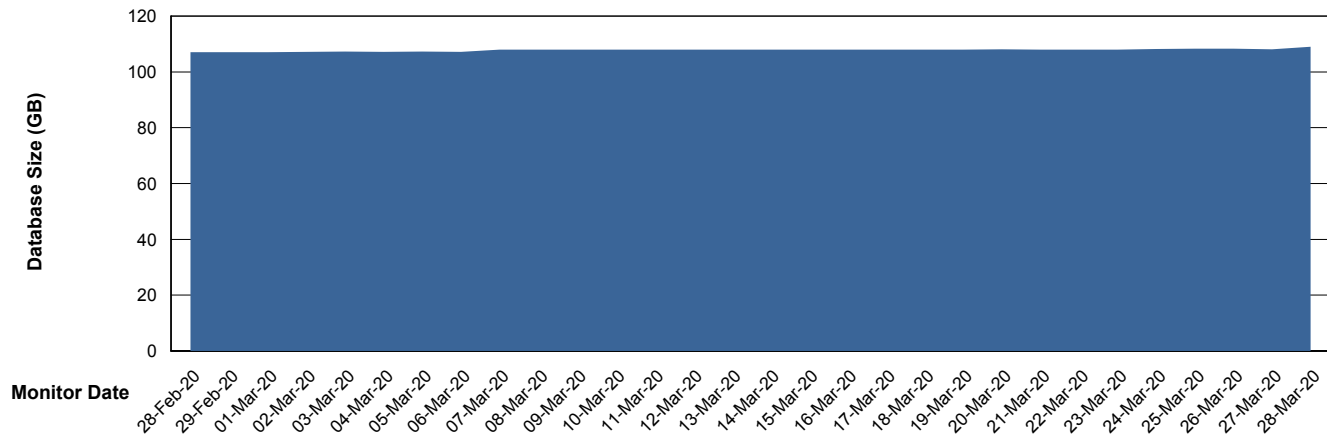
DATABASE SIZE AUJ\_DB4\_Primary

### Database growth over last month



DATABASE SIZE AUJDB\_BI

### Database growth over last month



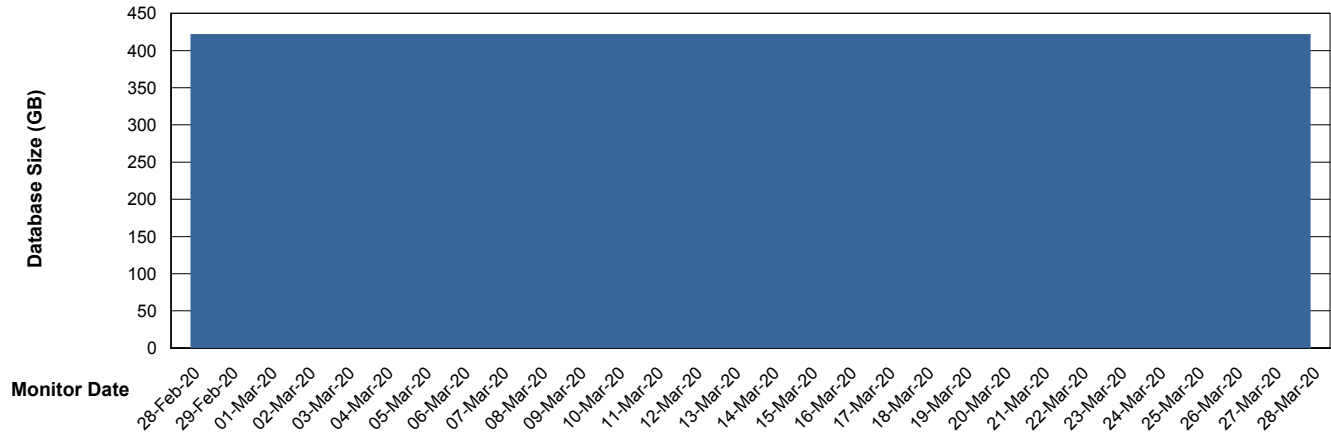
# Weekly SLA Customer Report

Customer AUJ\_Production  
Database ID 41



DATABASE SIZE AUJDB\_BI\_TS1

### Database growth over last month



# Weekly SLA Customer Report

Customer AUJ\_Production  
 Database ID 41



Database Tablespace AUJ\_DB4\_Primary

Date	Tablespace Name	Filesize (Gb)	Usedsize (Gb)	Percentage free
28-Mar-20	ABSDATA	469	411	12
	INDX	640	567	11
27-Mar-20	ABSDATA	469	411	12
	INDX	640	567	11
26-Mar-20	ABSDATA	469	411	12
	INDX	640	566	12
25-Mar-20	ABSDATA	469	410	13
	INDX	640	566	12
24-Mar-20	ABSDATA	469	410	13
	INDX	640	565	12
23-Mar-20	ABSDATA	469	410	13
	INDX	640	565	12
22-Mar-20	ABSDATA	469	409	13
	INDX	640	564	12

# Weekly SLA Customer Report

Customer AUJ\_Production  
Database ID 41



Database Tablespace		AUJDB_BI		
Date	Tablespace Name	Filesize (Gb)	Usedsize (Gb)	Percentage free
28-Mar-20	ABSDATA	113	87	23
	INDX	68	17	75
27-Mar-20	ABSDATA	113	87	23
	INDX	68	17	75
26-Mar-20	ABSDATA	113	87	23
	INDX	68	17	75
25-Mar-20	ABSDATA	113	87	23
	INDX	68	17	75
24-Mar-20	ABSDATA	113	87	23
	INDX	68	17	75
23-Mar-20	ABSDATA	113	87	23
	INDX	68	17	75
22-Mar-20	ABSDATA	113	87	23
	INDX	68	17	75

# Weekly SLA Customer Report

Customer AUJ\_Production  
 Database ID 41



Database Tablespace AUJDB\_BI\_TS1

Date	Tablespace Name	Filesize (Gb)	Usedsize (Gb)	Percentage free
28-Mar-20	ABSDATA	282	249	12
	INDX	382	169	56
27-Mar-20	ABSDATA	282	249	12
	INDX	382	169	56
26-Mar-20	ABSDATA	282	249	12
	INDX	382	169	56
25-Mar-20	ABSDATA	282	249	12
	INDX	382	169	56
24-Mar-20	ABSDATA	282	249	12
	INDX	382	169	56
23-Mar-20	ABSDATA	282	249	12
	INDX	382	169	56
22-Mar-20	ABSDATA	282	249	12
	INDX	382	169	56

BI Status and last ETL error for AUJDB\_BI

	Sun 22/3/2020	Mon 23/3/2020	Tue 24/3/2020	Wed 25/3/2020	Thu 26/3/2020	Fri 27/3/2020	Sat 28/3/2020
<b>ABS DataWarehouse ETL Health</b>	OK	OK	OK	OK	OK	OK	OK
<b>ABS DWHStaging ETL Health</b>	OK	OK	OK	OK	OK	OK	OK

BI Status and last ETL error for AUJDB\_BI\_TS1

	Sun 22/3/2020	Mon 23/3/2020	Tue 24/3/2020	Wed 25/3/2020	Thu 26/3/2020	Fri 27/3/2020	Sat 28/3/2020
<b>ABS DataWarehouse ETL Health</b>	Not OK	Not OK	Not OK	Not OK	Not OK	Not OK	Not OK
<b>ABS DWHStaging ETL Health</b>	OK	OK	OK	OK	OK	OK	OK

# Weekly SLA Customer Report

Customer AUJ\_Production  
Database ID 41

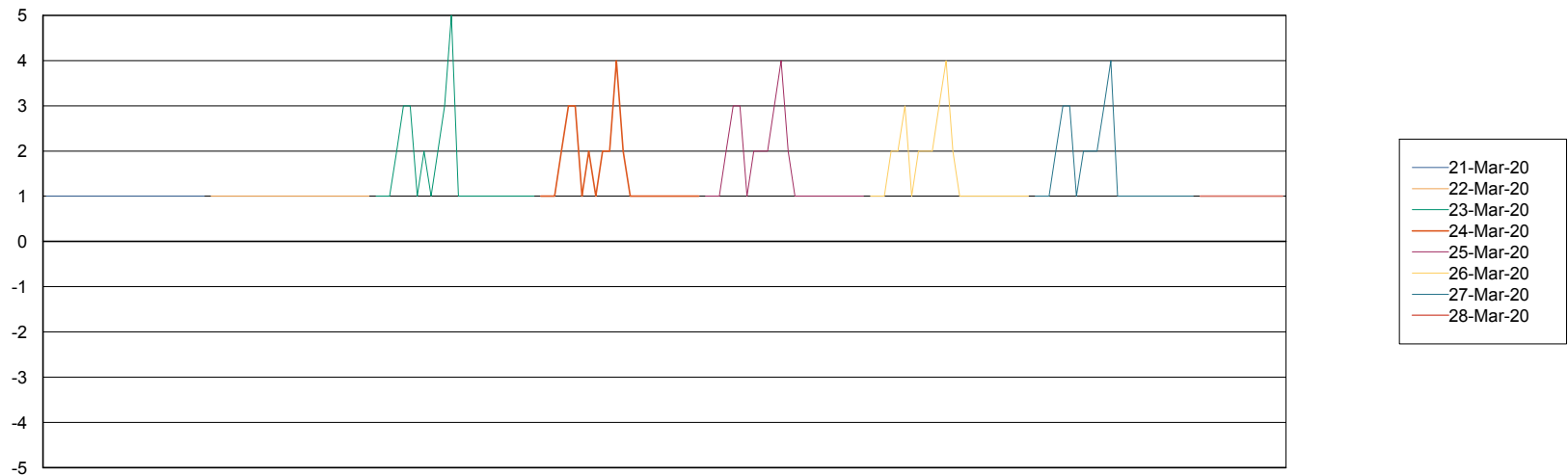


## BI last ETL error for AUJDB\_BI\_TS1

Wed, 25-03-2020	ORA-01722: invalid number
Mon, 23-03-2020	ORA-01722: invalid number
Tue, 24-03-2020	ORA-01722: invalid number
Sat, 28-03-2020	ORA-01722: invalid number
Sun, 22-03-2020	ORA-01722: invalid number
Thu, 26-03-2020	ORA-01722: invalid number
Fri, 27-03-2020	ORA-01722: invalid number

## Standby Database Health AUJ\_Production

### Recovery lag for last 7 days



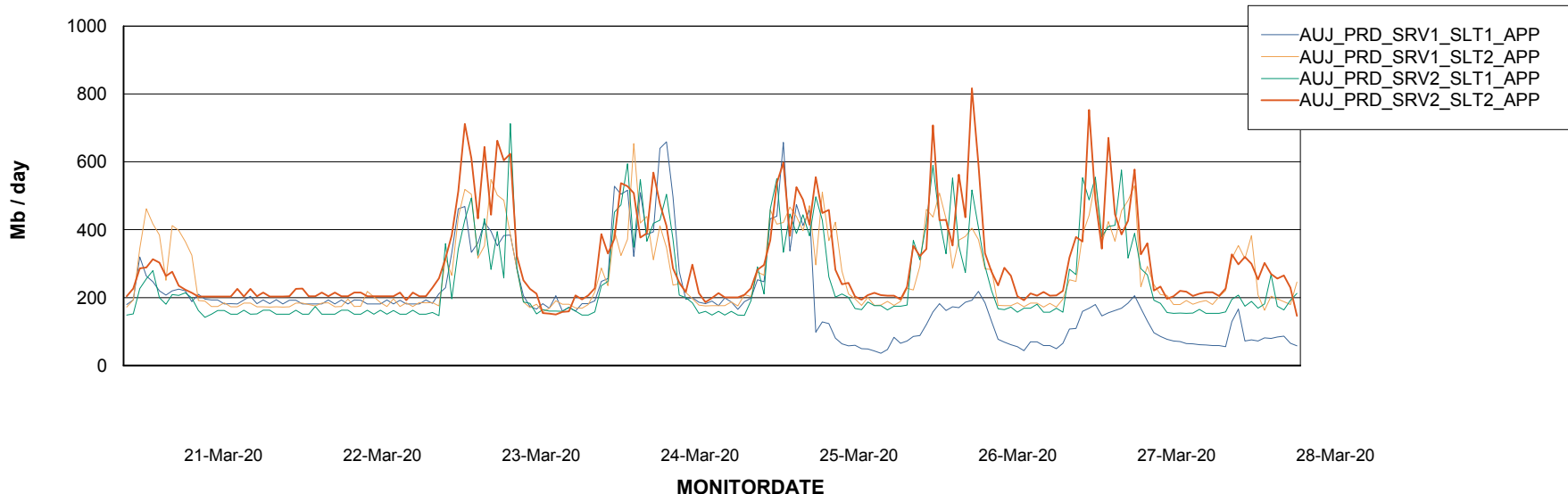
# Weekly SLA Customer Report

Customer AUJ\_Production  
Database ID 41

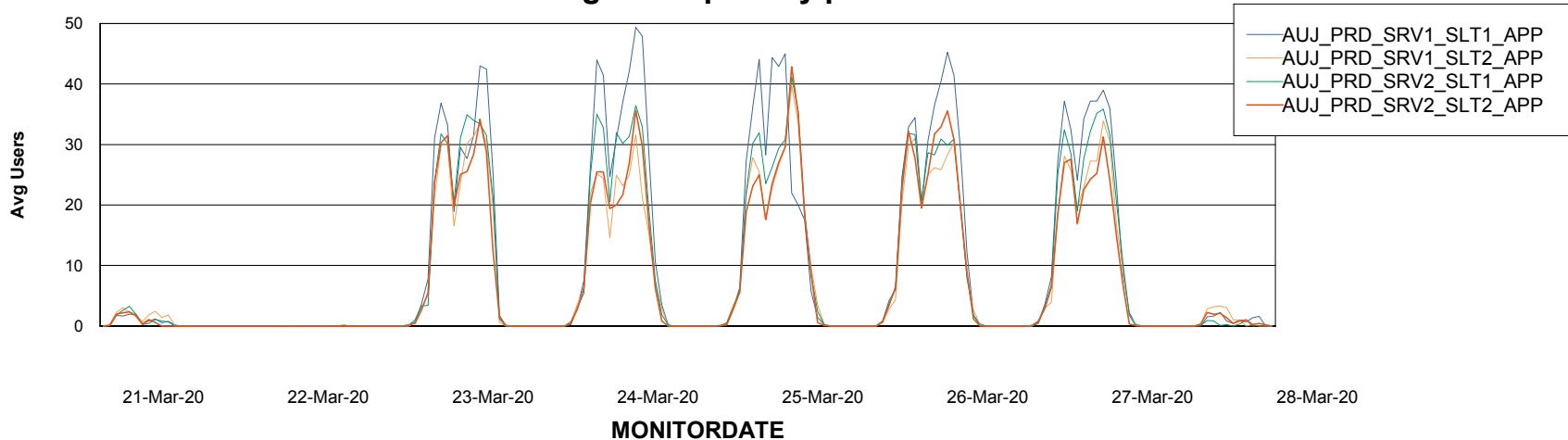


## ABSSolute Application Server Services

### Avg memory used per ABS Server Service



### Avg users per day per ABS server



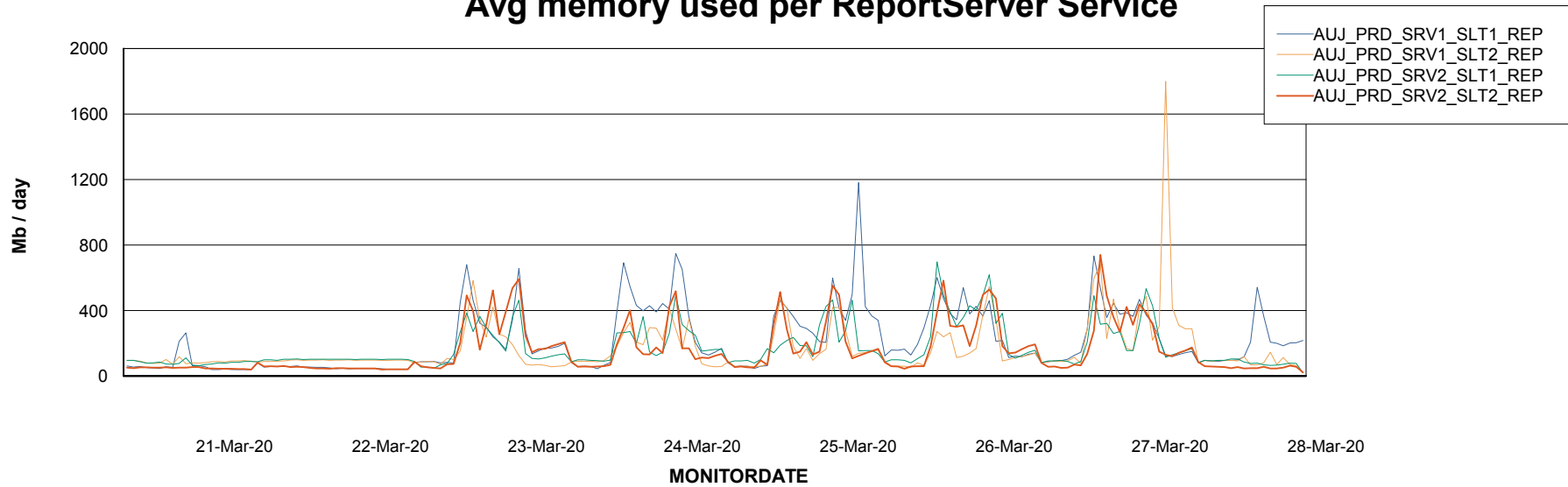
# Weekly SLA Customer Report

Customer AUJ\_Production  
Database ID 41



## ABSSolute Application ReportServer Services

### Avg memory used per ReportServer Service



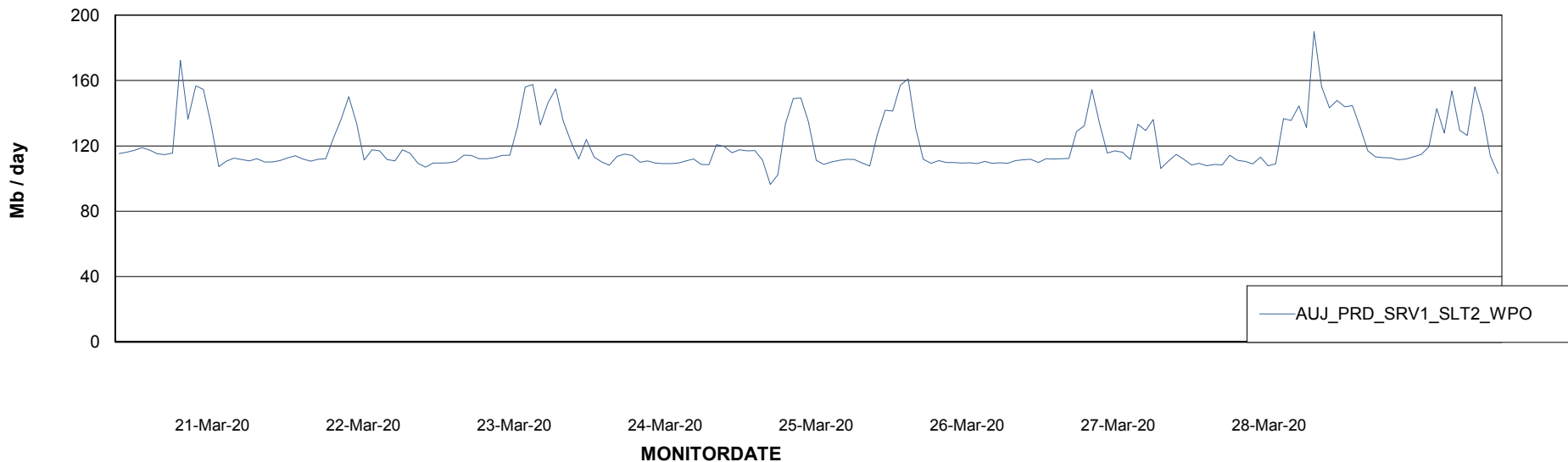
# Weekly SLA Customer Report

Customer AUJ\_Production  
Database ID 41



## ABSolute Web Component Services

### Avg memory used per ABS Web component



# Weekly SLA Customer Report

Customer AUJ\_Production  
Database ID 41



## Disaster per ABS component

