

Weekly SLA Customer Report

Customer CUS Production
 Database ID 84



Harddisk Usage CUS_ABSBI

	Free disk space on c: (%)	Total disk space on c: (Gb)	Free disk space on d: (%)	Total disk space on d: (Gb)
29-Feb-20	76	199	67	800
28-Feb-20	76	199	67	800
27-Feb-20	76	199	67	800
26-Feb-20	76	199	67	800
25-Feb-20	76	199	67	800
24-Feb-20	76	199	67	800
23-Feb-20	76	199	67	800

Harddisk Usage CUS_ABSPROD1

	Free disk space on c: (%)	Total disk space on c: (Gb)
29-Feb-20	58	199
28-Feb-20	59	199
27-Feb-20	59	199
26-Feb-20	59	199
25-Feb-20	60	199
24-Feb-20	60	199
23-Feb-20	60	199

Weekly SLA Customer Report

Customer CUS Production
Database ID 84



Harddisk Usage CUS_ABSPROD2

	Free disk space on c: (%)	Total disk space on c: (Gb)
29-Feb-20	14	199
28-Feb-20	14	199
27-Feb-20	15	199
26-Feb-20	15	199
25-Feb-20	15	199
24-Feb-20	15	199
23-Feb-20	15	199

Harddisk Usage CUS_ABSWEBPROD

	Free disk space on c: (%)	Total disk space on c: (Gb)
29-Feb-20	80	199
28-Feb-20	80	199
27-Feb-20	80	199
26-Feb-20	80	199
25-Feb-20	81	199
24-Feb-20	81	199
23-Feb-20	81	199

Weekly SLA Customer Report

Customer CUS Production
 Database ID 84



Harddisk Usage CUS_PrimaryDBSrv_ABSDB1

	Free disk space on c: (%)	Total disk space on c: (Gb)	Free disk space on d: (%)	Total disk space on d: (Gb)
29-Feb-20	75	199	57	1,024
28-Feb-20	75	199	56	1,024
27-Feb-20	75	199	56	1,024
26-Feb-20	76	199	56	1,024
25-Feb-20	76	199	56	1,024
24-Feb-20	76	199	57	1,024
23-Feb-20	76	199	56	1,024

Harddisk Usage CUS_StandByDBSrv_ABSDB2

	Free disk space on c: (%)	Total disk space on c: (Gb)	Free disk space on d: (%)	Total disk space on d: (Gb)
29-Feb-20	82	199	62	1,024
28-Feb-20	82	199	62	1,024
27-Feb-20	82	199	62	1,024
26-Feb-20	82	199	62	1,024
25-Feb-20	82	199	62	1,024
24-Feb-20	82	199	63	1,024
23-Feb-20	82	199	63	1,024

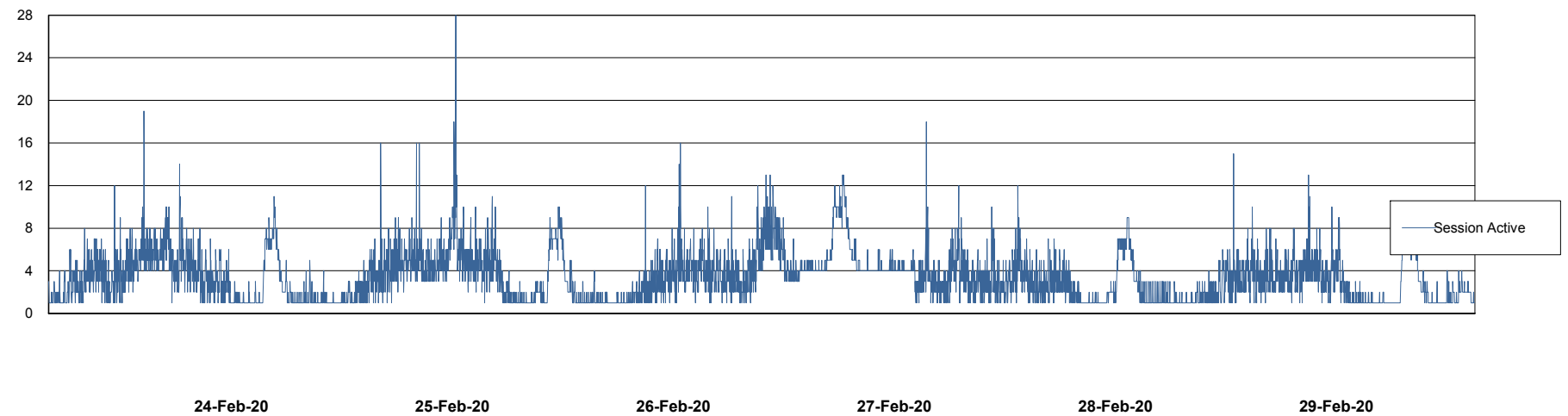
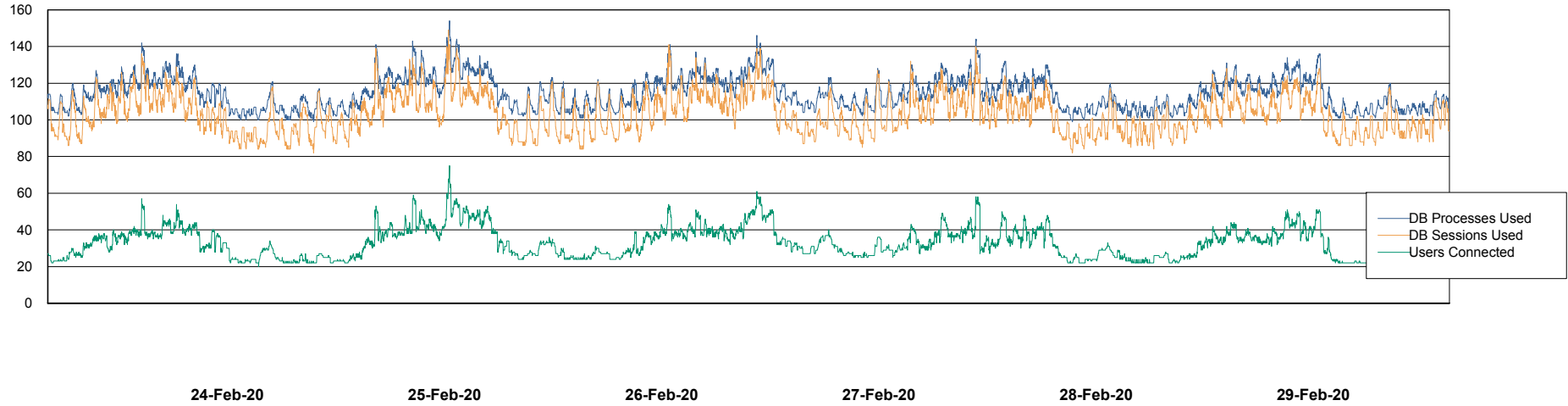
Weekly SLA Customer Report

Customer CUS Production
Database ID 84



Database Performance CUS_ProdDB_Primary

DB Processes Max 300
DB Sessions Max 472



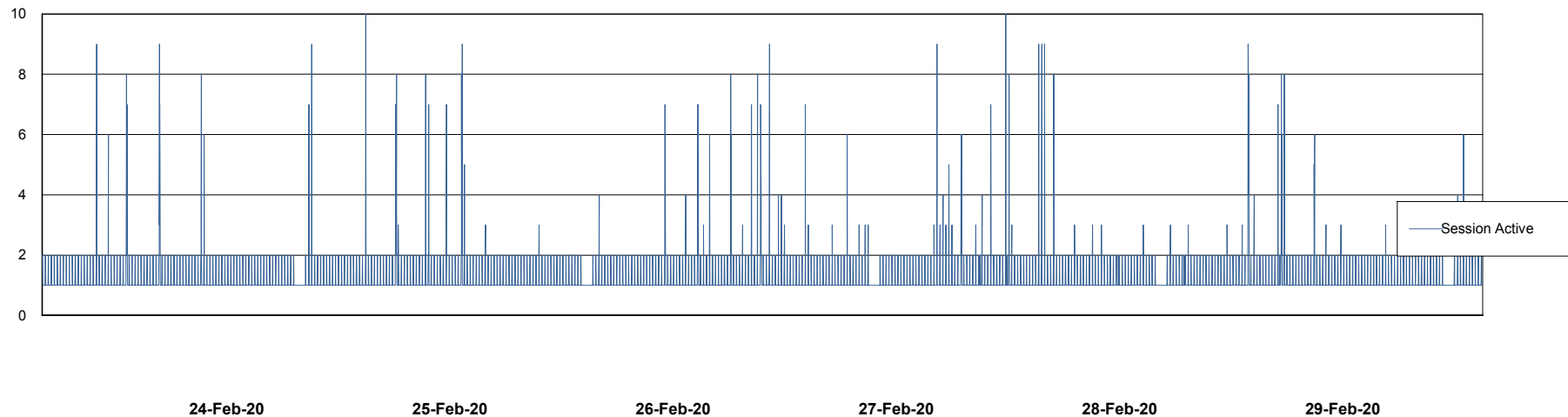
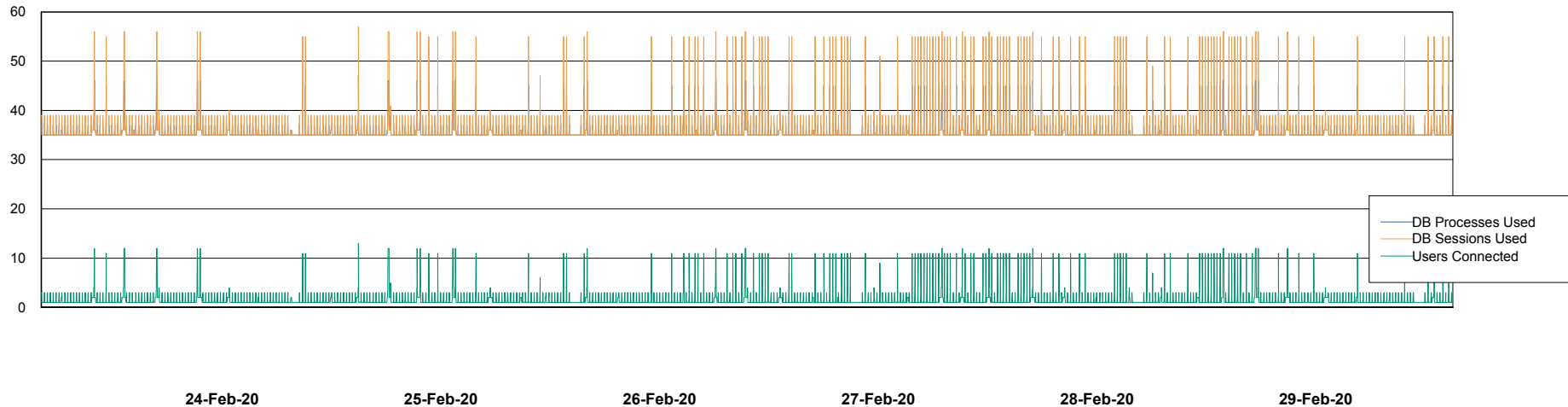
Weekly SLA Customer Report

Customer CUS Production
Database ID 84



Database Performance CUS_ProdDB_Standby

DB Processes Max 300
DB Sessions Max 472



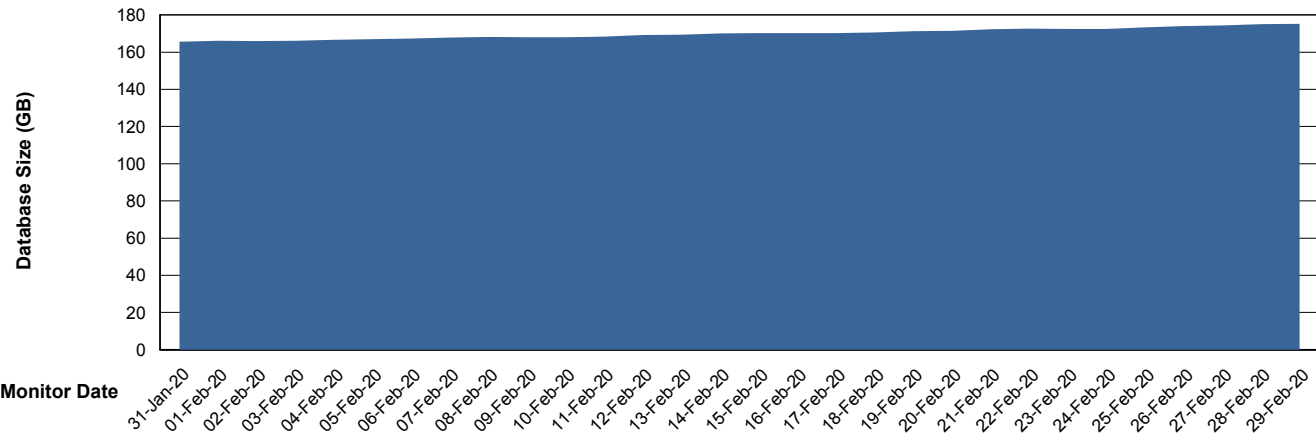
Weekly SLA Customer Report

Customer CUS Production
 Database ID 84



DATABASE SIZE CUS_ProdDB_Primary

Database growth over last month



Database Tablespace CUS_ProdDB_Primary

Date	Tablespace Name	Filesize (Gb)	Usedsize (Gb)	Percentage free
29-Feb-20	ABSDATA	129	73	43
	INDX	111	92	17
28-Feb-20	ABSDATA	129	73	43
	INDX	111	92	17
27-Feb-20	ABSDATA	129	72	44
	INDX	111	92	17
26-Feb-20	ABSDATA	129	72	44
	INDX	111	92	17
25-Feb-20	ABSDATA	129	72	44
	INDX	111	92	17
24-Feb-20	ABSDATA	129	71	45
	INDX	111	92	17
23-Feb-20	ABSDATA	129	71	45
	INDX	111	92	17

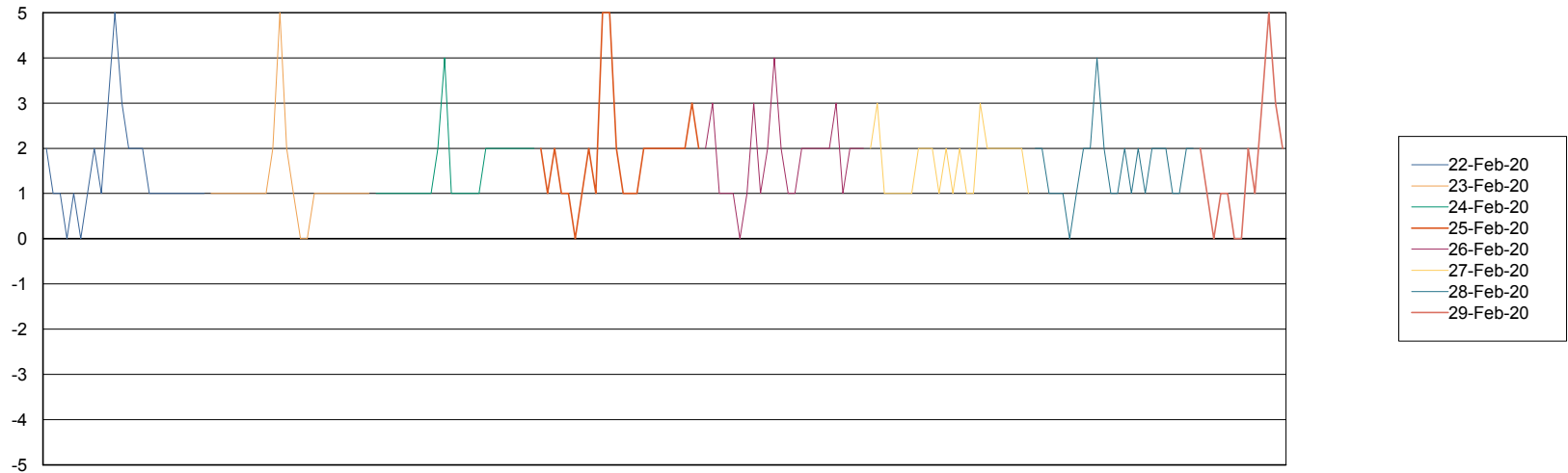
Weekly SLA Customer Report

Customer CUS Production
Database ID 84



Standby Database Health CUS Production

Recovery lag for last 7 days



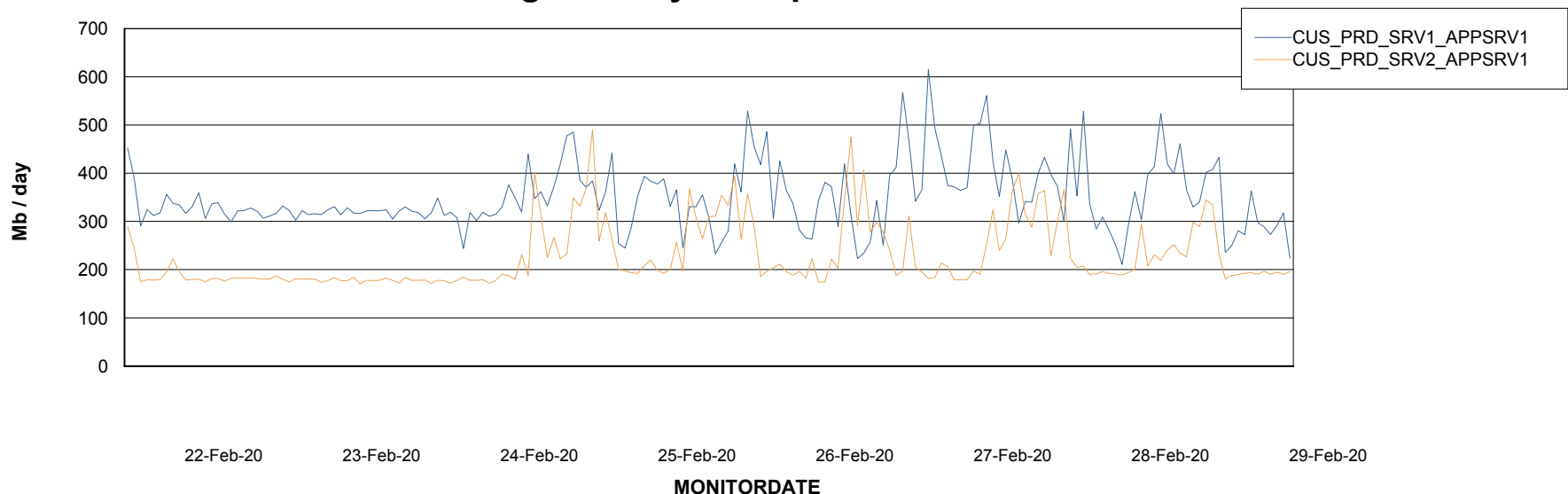
Weekly SLA Customer Report

Customer CUS Production
Database ID 84

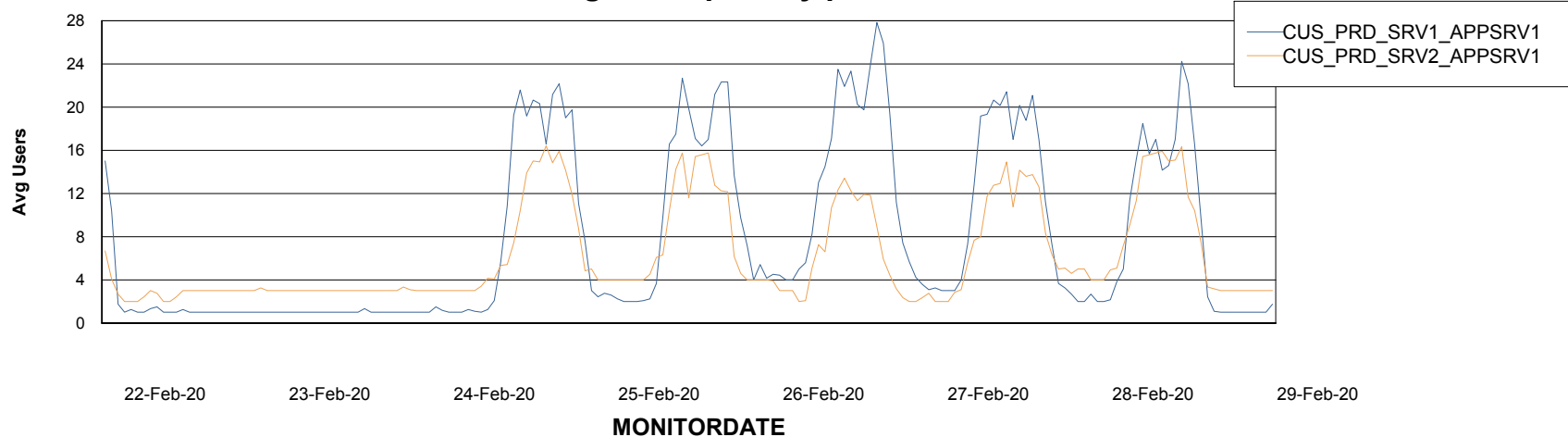


ABSSolute Application Server Services

Avg memory used per ABS Server Service



Avg users per day per ABS server



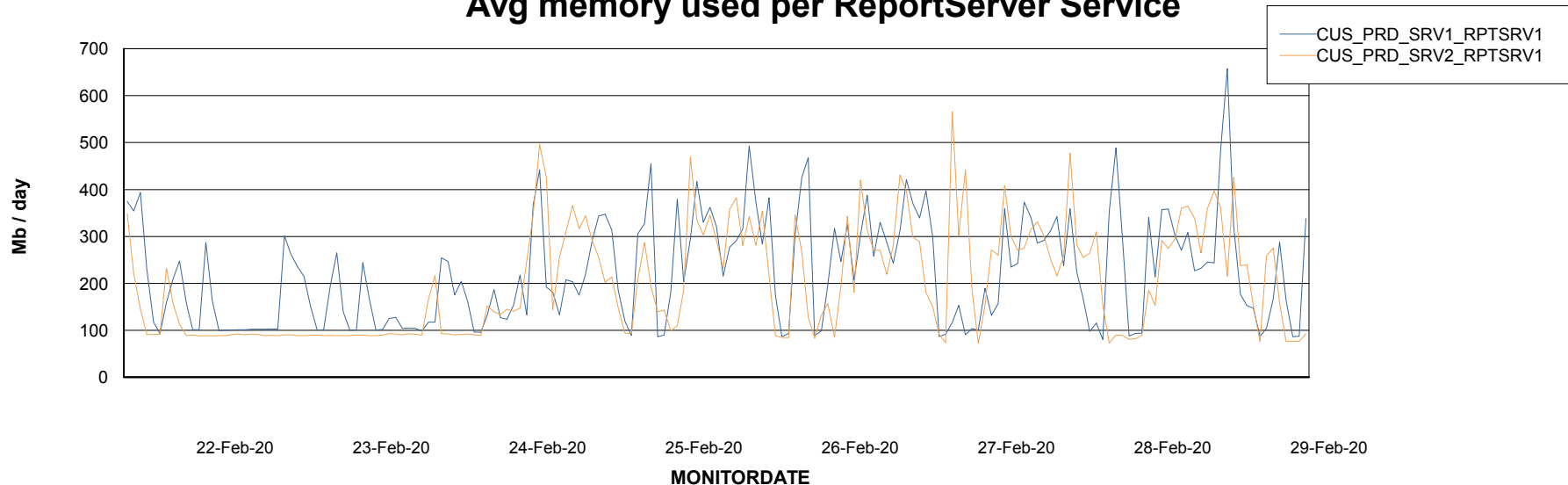
Weekly SLA Customer Report

Customer CUS Production
Database ID 84



ABSSolute Web Component Services

Avg memory used per ReportServer Service



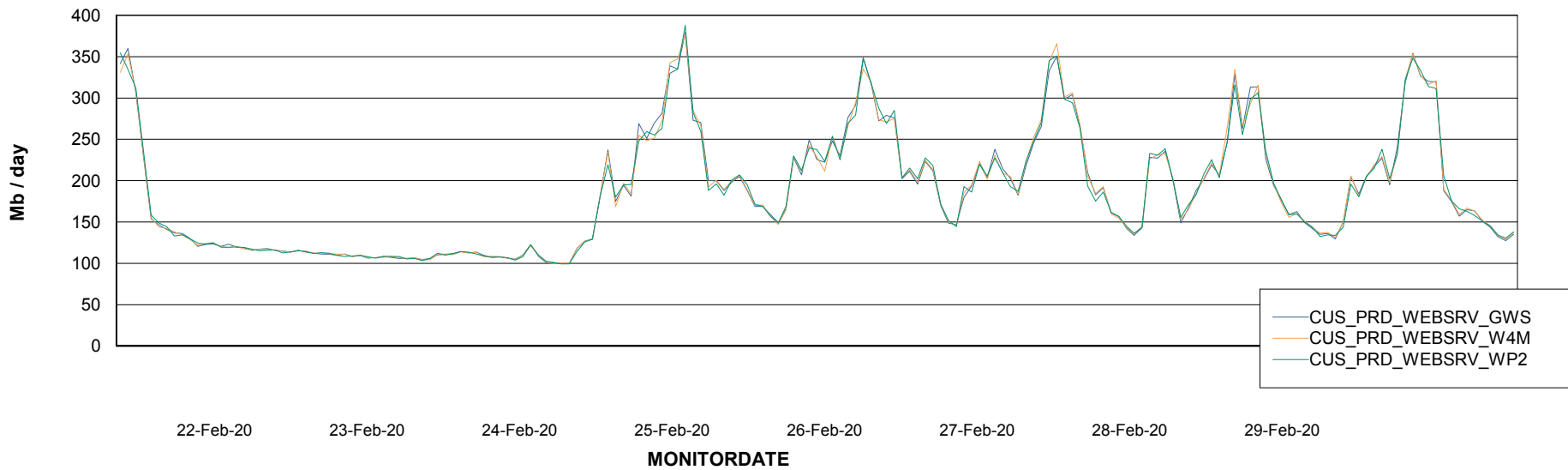
Weekly SLA Customer Report

Customer CUS Production
Database ID 84



ABSSolute Web Component Services

Avg memory used per ABS Web component



Weekly SLA Customer Report

Customer CUS Production
Database ID 84



Disaster per ABS component

