

# Weekly SLA Customer Report

Customer AUJ\_Production  
Database ID 41



## Harddisk Usage AUJ\_PRD\_ABS\_APP1

	Free disk space on / (%)	Total disk space on / (Gb)	Used disk space on / (Gb)
15-Feb-20	26	241	168
14-Feb-20	26	241	168
13-Feb-20	26	241	168
12-Feb-20	27	241	168
11-Feb-20	27	241	168
10-Feb-20	27	241	168
09-Feb-20	27	241	168

## Harddisk Usage AUJ\_PRD\_ABS\_APP2

	Free disk space on / (%)	Total disk space on / (Gb)	Used disk space on / (Gb)
15-Feb-20	10	241	207
14-Feb-20	10	241	207
13-Feb-20	10	241	207
12-Feb-20	10	241	207
11-Feb-20	10	241	207
10-Feb-20	10	241	207
09-Feb-20	10	241	207

# Weekly SLA Customer Report

Customer AUJ\_Production  
Database ID 41



## Harddisk Usage AUJ\_PRD\_ABS\_APP3

	Free disk space on / (%)	Total disk space on / (Gb)	Used disk space on / (Gb)
15-Feb-20	91	247	22
14-Feb-20	91	247	22
13-Feb-20	91	247	22
12-Feb-20	91	247	22
11-Feb-20	91	247	22
10-Feb-20	91	247	22
09-Feb-20	91	247	22

## Harddisk Usage AUJ\_PRD\_ORACLE4

	Free disk space on / (%)	Total disk space on / (Gb)	Used disk space on / (Gb)	Free disk space on /bk (%)	Total disk space on /bk (Gb)	Used disk space on /bk (Gb)	Free disk space on /data (%)	Total disk space on /data (Gb)	Used disk space on /da /data
15-Feb-20	98	534	12	51	4,436	2,076	72	4,436	1,189
14-Feb-20	98	534	12	50	4,436	2,103	72	4,436	1,189
13-Feb-20	98	534	12	50	4,436	2,103	72	4,436	1,189
12-Feb-20	98	534	12	50	4,436	2,102	72	4,436	1,189
11-Feb-20	98	534	12	50	4,436	2,100	72	4,436	1,188
10-Feb-20	98	534	12	50	4,436	2,100	72	4,436	1,188
09-Feb-20	98	534	12	50	4,436	2,094	72	4,436	1,188

# Weekly SLA Customer Report

Customer AUJ\_Production  
Database ID 41



## Harddisk Usage AUJ\_PRD\_ORACLE5

	Free disk space on / (%)	Total disk space on / (Gb)	Used disk space on / (Gb)	Free disk space on /bk (%)	Total disk space on /bk (Gb)	Used disk space on /bk (Gb)	Free disk space on /data (%)	Total disk space on /data (Gb)	Used disk space on /da /data
15-Feb-20	97	534	16	94	4,436	232	72	4,436	1,173
14-Feb-20	97	534	16	94	4,436	236	72	4,436	1,174
13-Feb-20	97	534	16	94	4,436	237	72	4,436	1,174
12-Feb-20	97	534	16	94	4,436	238	72	4,436	1,174
11-Feb-20	97	534	16	94	4,436	238	72	4,436	1,174
10-Feb-20	97	534	16	95	4,436	232	72	4,436	1,174
09-Feb-20	97	534	16	95	4,436	227	72	4,436	1,173

## Harddisk Usage AUJ\_PRD\_ORACLE6

	Free disk space on / (%)	Total disk space on / (Gb)	Used disk space on / (Gb)	Free disk space on /bk (%)	Total disk space on /bk (Gb)	Used disk space on /bk (Gb)	Free disk space on /data (%)	Total disk space on /data (Gb)	Used disk space on /da /data
15-Feb-20	87	534	66	87	534	66	72	4,436	1,165
14-Feb-20	86	534	71	86	534	71	72	4,436	1,166
13-Feb-20	86	534	73	86	534	73	72	4,436	1,166
12-Feb-20	86	534	73	86	534	73	72	4,436	1,166
11-Feb-20	86	534	72	86	534	72	72	4,436	1,166
10-Feb-20	87	534	64	87	534	64	72	4,436	1,166
09-Feb-20	88	534	61	88	534	61	72	4,436	1,166

# Weekly SLA Customer Report

Customer AUJ\_Production  
 Database ID 41



Harddisk Usage AUJ\_PRD\_ORACLE\_BI1

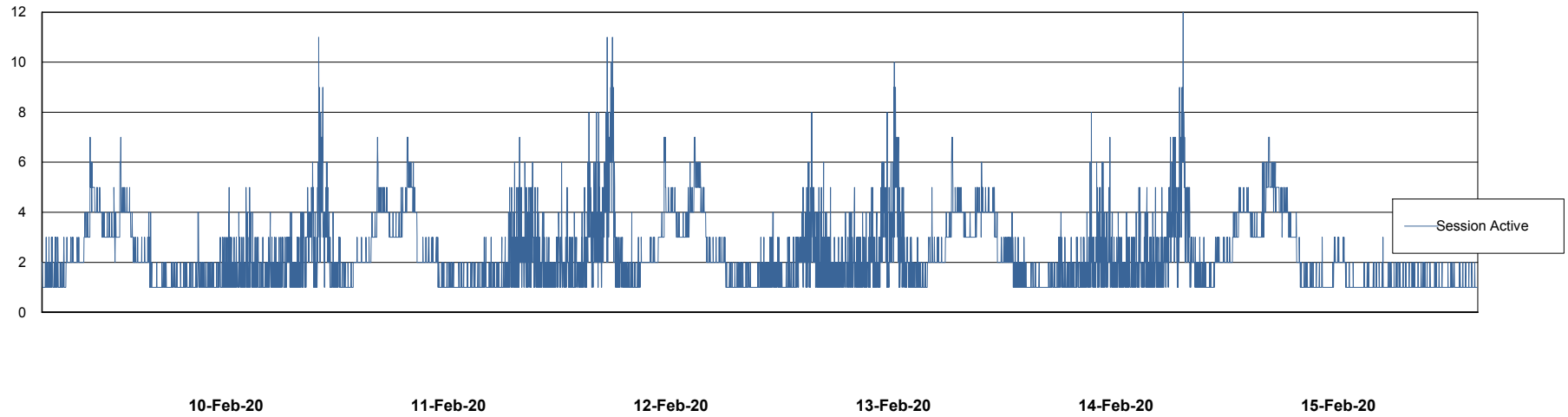
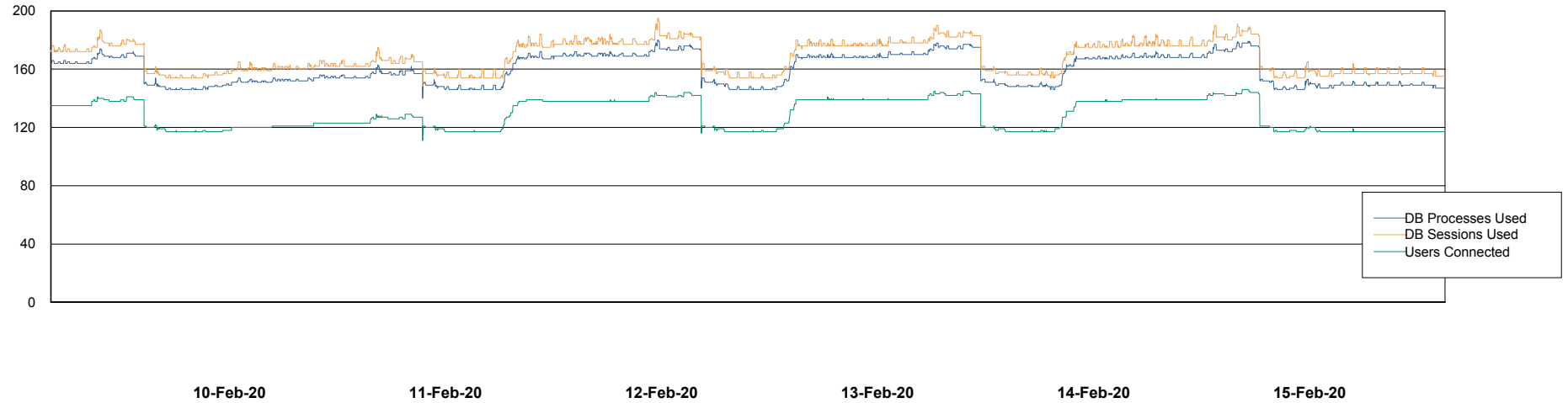
	Free disk space on / (%)	Total disk space on / (Gb)	Used disk space on / (Gb)
15-Feb-20	26	526	366
14-Feb-20	27	526	363
13-Feb-20	27	526	363
12-Feb-20	27	526	363
11-Feb-20	27	526	363
10-Feb-20	27	526	363
09-Feb-20	27	526	366

# Weekly SLA Customer Report

Customer AUJ\_Production  
Database ID 41



## Database Performance AUJ\_DB4\_Primary

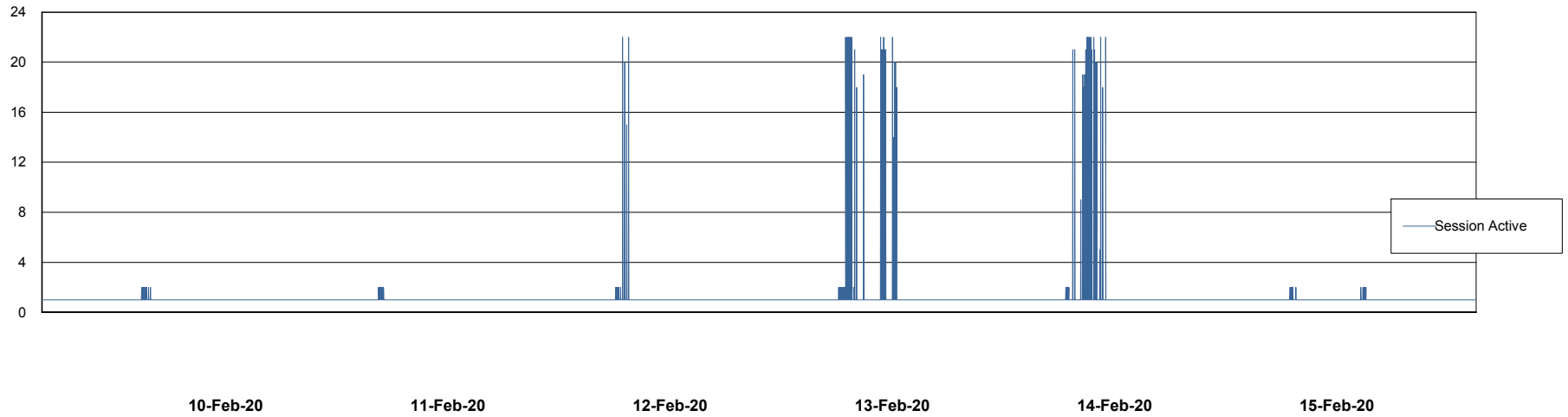
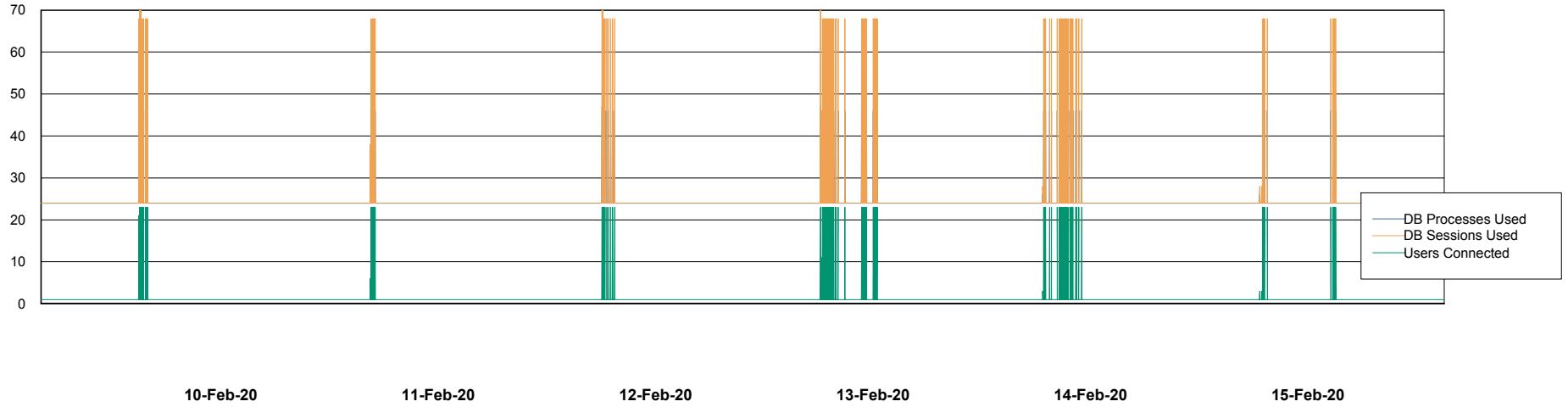


# Weekly SLA Customer Report

Customer AUJ\_Production  
Database ID 41



## Database Performance AUJ\_DB5\_Standby

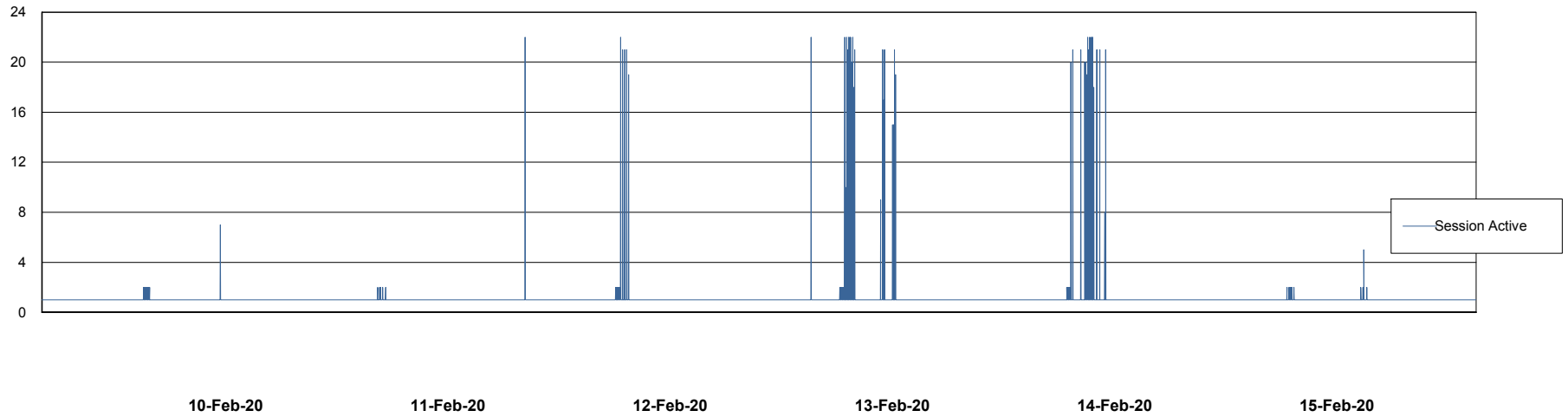
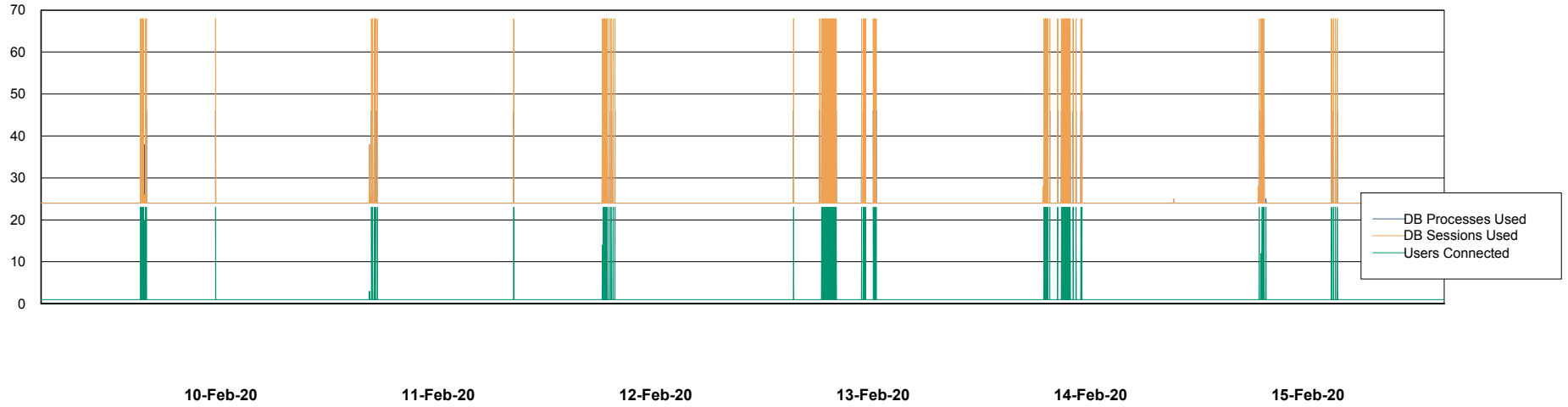


# Weekly SLA Customer Report

Customer AUJ\_Production  
Database ID 41



## Database Performance AUJ\_DB6\_Standby2

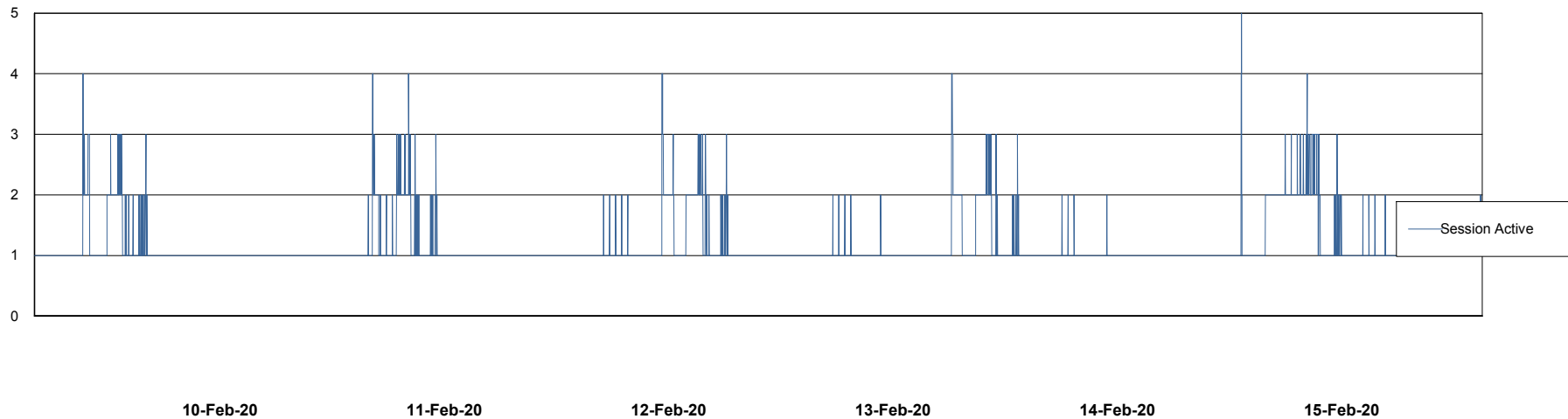
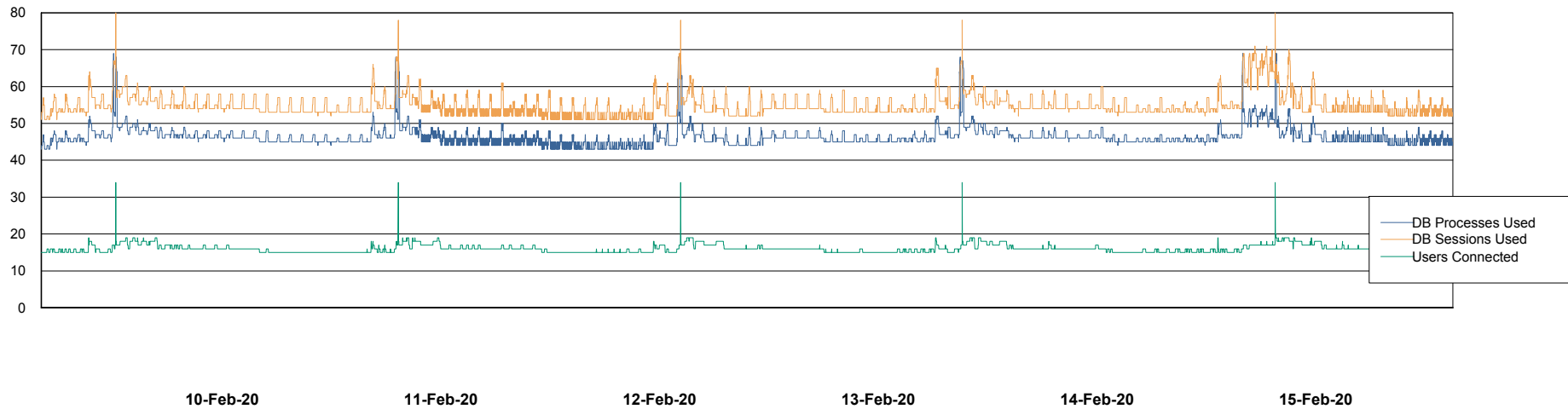


# Weekly SLA Customer Report

Customer AUJ\_Production  
Database ID 41



## Database Performance AUJDB\_BI

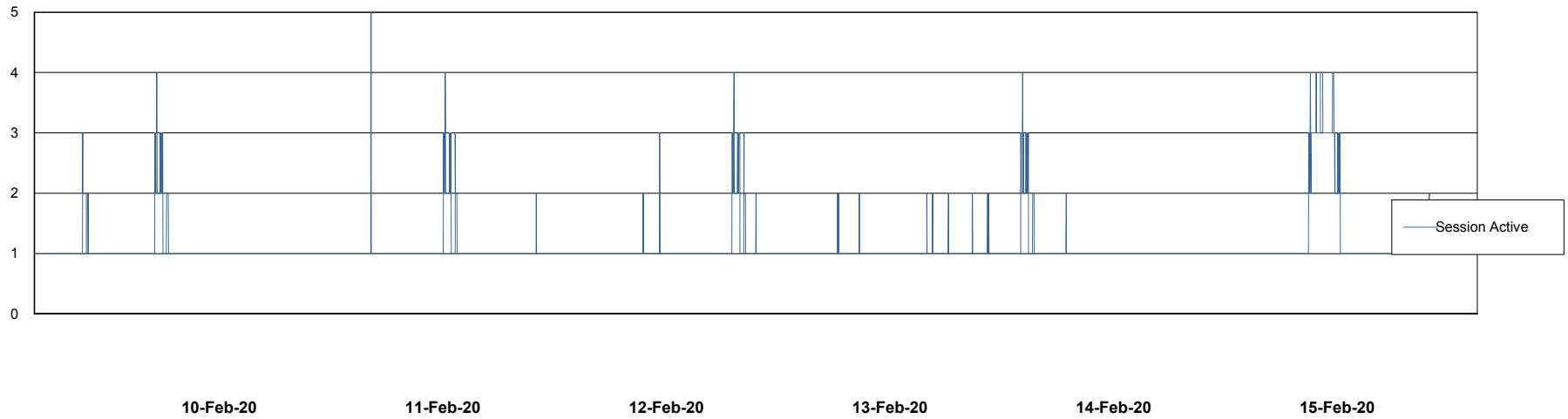
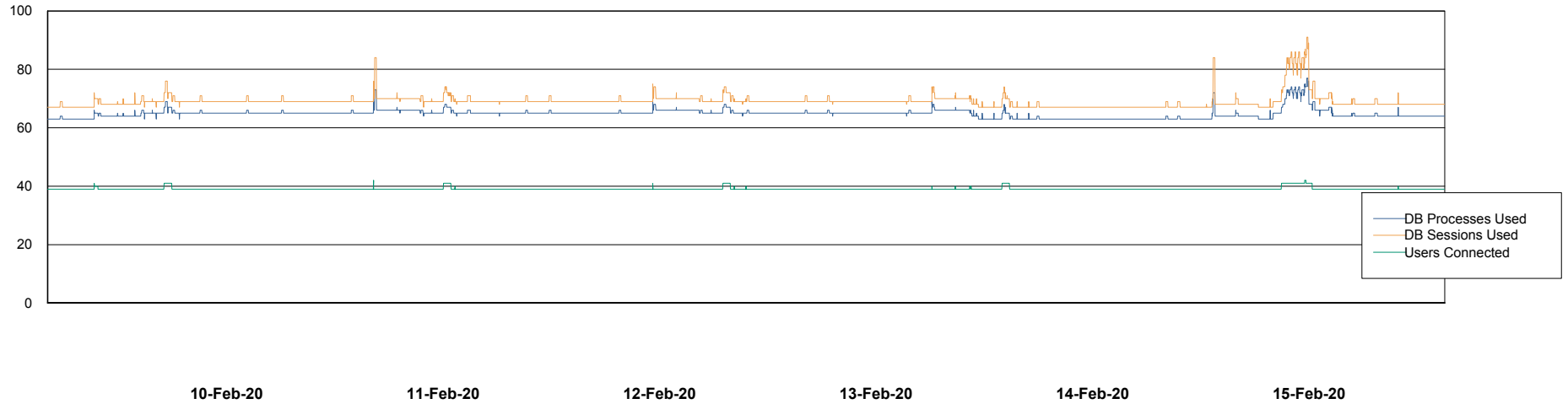


# Weekly SLA Customer Report

Customer AUJ\_Production  
Database ID 41



## Database Performance AUJDB\_BI\_TS1



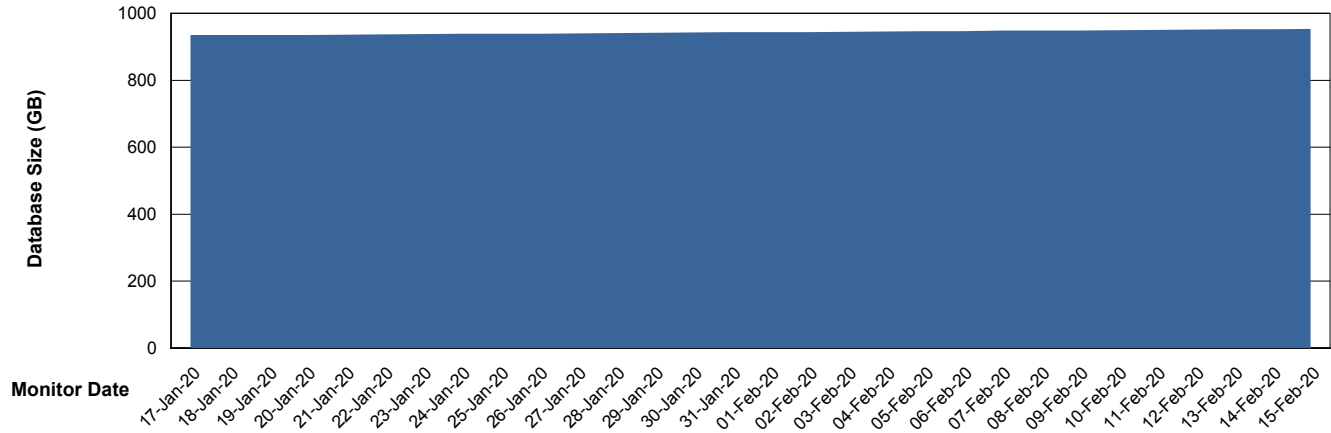
# Weekly SLA Customer Report

Customer AUJ\_Production  
Database ID 41



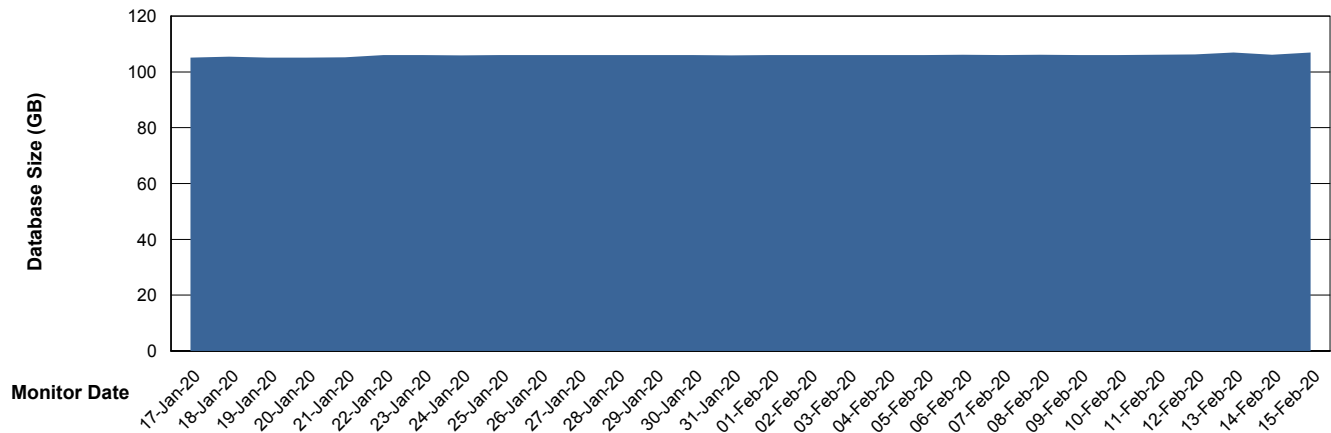
DATABASE SIZE AUJ\_DB4\_Primary

### Database growth over last month



DATABASE SIZE AUJDB\_BI

### Database growth over last month



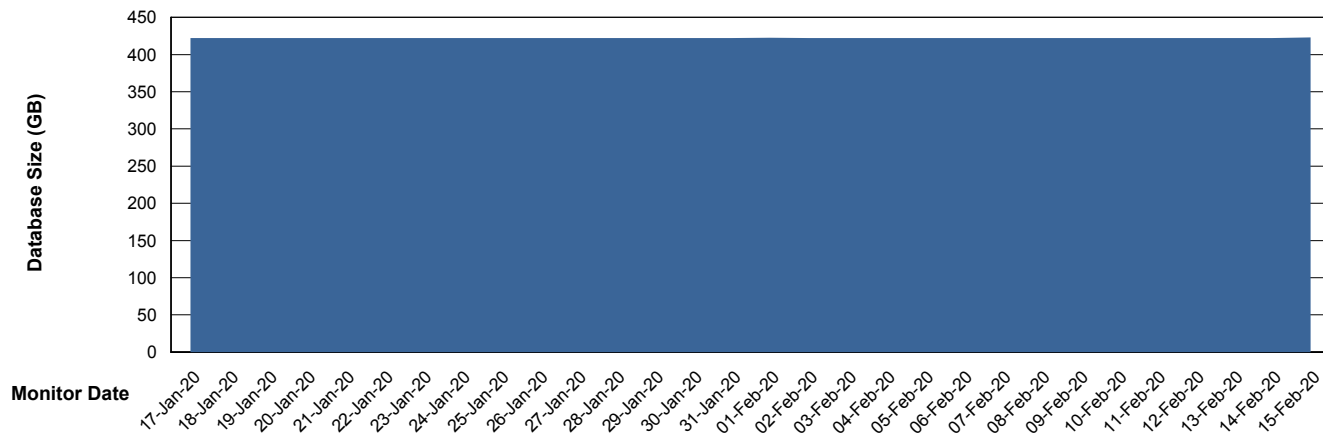
# Weekly SLA Customer Report

Customer AUJ\_Production  
Database ID 41



DATABASE SIZE AUJDB\_BI\_TS1

### Database growth over last month



# Weekly SLA Customer Report

Customer AUJ\_Production  
 Database ID 41



Database Tablespace AUJ\_DB4\_Primary

Date	Tablespace Name	Filesize (Gb)	Usedsize (Gb)	Percentage free
15-Feb-20	ABSDATA	469	400	15
	INDX	640	551	14
14-Feb-20	ABSDATA	469	400	15
	INDX	640	551	14
13-Feb-20	ABSDATA	469	400	15
	INDX	640	550	14
12-Feb-20	ABSDATA	469	400	15
	INDX	640	550	14
11-Feb-20	ABSDATA	469	400	15
	INDX	640	549	14
10-Feb-20	ABSDATA	469	399	15
	INDX	640	549	14
09-Feb-20	ABSDATA	469	399	15
	INDX	640	548	14

# Weekly SLA Customer Report

Customer AUJ\_Production  
Database ID 41



Database Tablespace		AUJDB_BI		
Date	Tablespace Name	Filesize (Gb)	Usedsize (Gb)	Percentage free
15-Feb-20	ABSDATA	113	86	24
	INDX	68	16	76
14-Feb-20	ABSDATA	113	86	24
	INDX	68	16	76
13-Feb-20	ABSDATA	113	86	24
	INDX	68	16	76
12-Feb-20	ABSDATA	113	86	24
	INDX	68	16	76
11-Feb-20	ABSDATA	113	85	25
	INDX	68	16	76
10-Feb-20	ABSDATA	113	85	25
	INDX	68	16	76
09-Feb-20	ABSDATA	113	85	25
	INDX	68	16	76

# Weekly SLA Customer Report

Customer AUJ\_Production  
 Database ID 41



Database Tablespace AUJDB\_BI\_TS1

Date	Tablespace Name	Filesize (Gb)	Usedsize (Gb)	Percentage free
15-Feb-20	ABSDATA	282	249	12
	INDX	382	169	56
14-Feb-20	ABSDATA	282	249	12
	INDX	382	169	56
13-Feb-20	ABSDATA	282	249	12
	INDX	382	169	56
12-Feb-20	ABSDATA	282	249	12
	INDX	382	169	56
11-Feb-20	ABSDATA	282	249	12
	INDX	382	169	56
10-Feb-20	ABSDATA	282	249	12
	INDX	382	169	56
09-Feb-20	ABSDATA	282	249	12
	INDX	382	169	56

BI Status and last ETL error for AUJDB\_BI

	Sun 9/2/2020	Mon 10/2/2020	Tue 11/2/2020	Wed 12/2/2020	Thu 13/2/2020	Fri 14/2/2020	Sat 15/2/2020
<b>ABS DataWarehouse ETL Health</b>	OK	OK	OK	OK	OK	OK	OK
<b>ABS DWHStaging ETL Health</b>	OK	OK	OK	OK	OK	OK	OK

BI Status and last ETL error for AUJDB\_BI\_TS1

	Sun 9/2/2020	Mon 10/2/2020	Tue 11/2/2020	Wed 12/2/2020	Thu 13/2/2020	Fri 14/2/2020	Sat 15/2/2020
<b>ABS DataWarehouse ETL Health</b>	Not OK	Not OK	Not OK	Not OK	Not OK	Not OK	Not OK
<b>ABS DWHStaging ETL Health</b>	OK	OK	OK	OK	OK	OK	OK

# Weekly SLA Customer Report

Customer AUJ\_Production  
Database ID 41

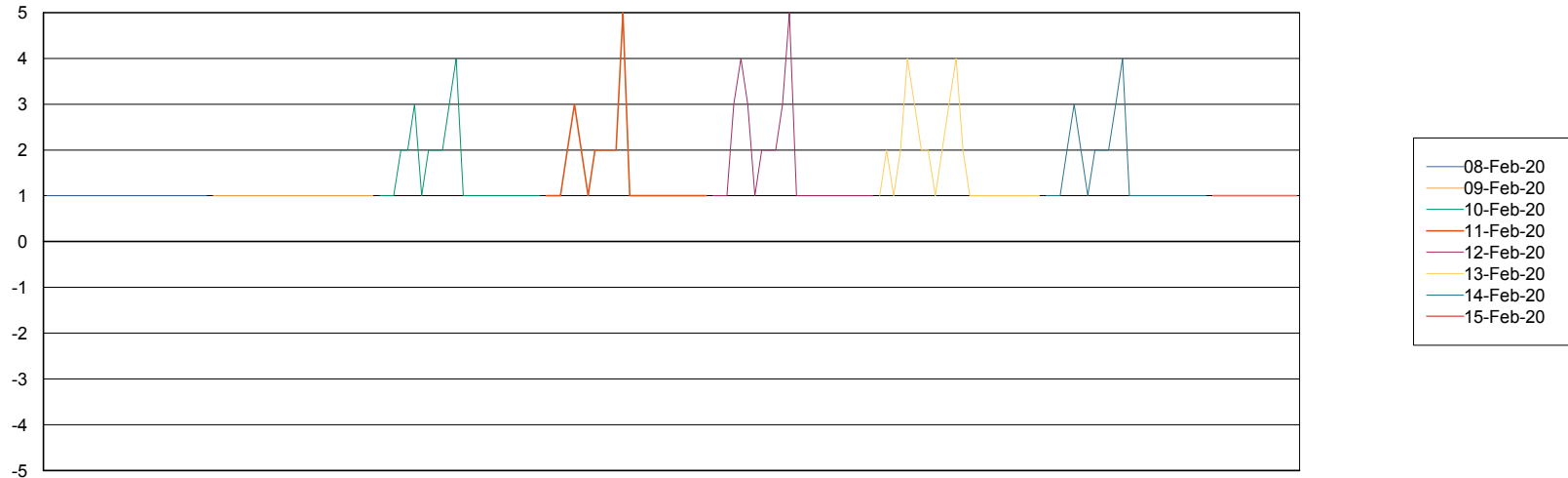


## BI last ETL error for AUJDB\_BI\_TS1

Sun, 9-02-2020	ORA-01722: invalid number
Mon, 10-02-2020	ORA-01722: invalid number
Tue, 11-02-2020	ORA-01722: invalid number
Fri, 14-02-2020	ORA-01722: invalid number
Wed, 12-02-2020	ORA-01722: invalid number
Thu, 13-02-2020	ORA-01722: invalid number
Sat, 15-02-2020	ORA-01722: invalid number

## Standby Database Health AUJ\_Production

### Recovery lag for last 7 days



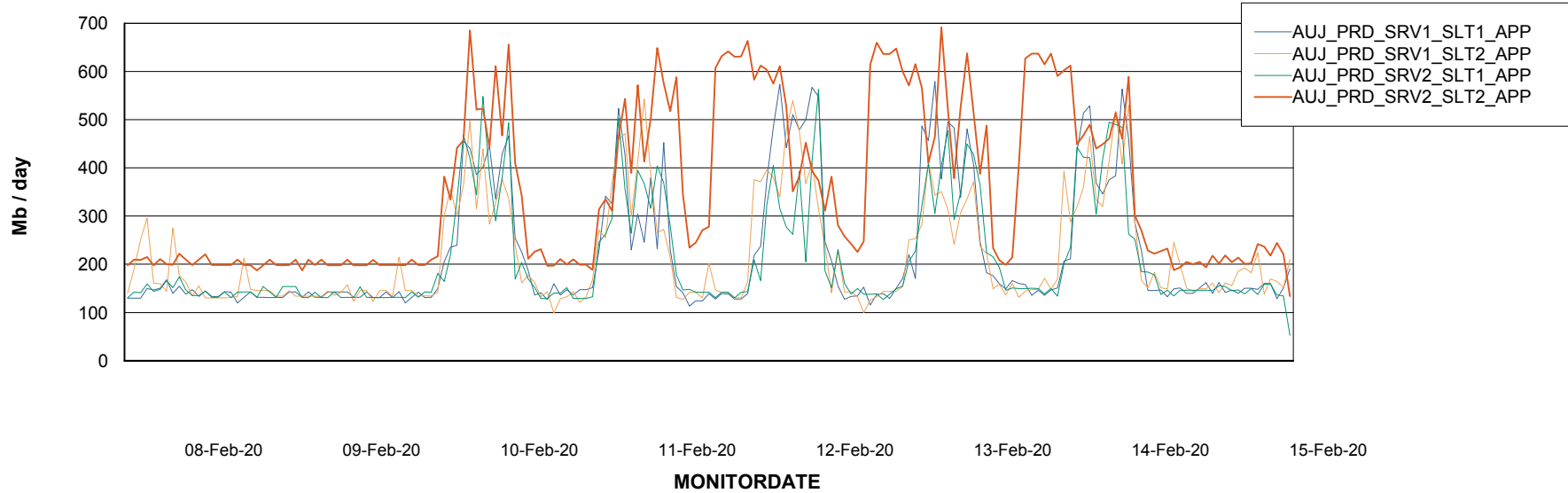
# Weekly SLA Customer Report

Customer AUJ\_Production  
Database ID 41

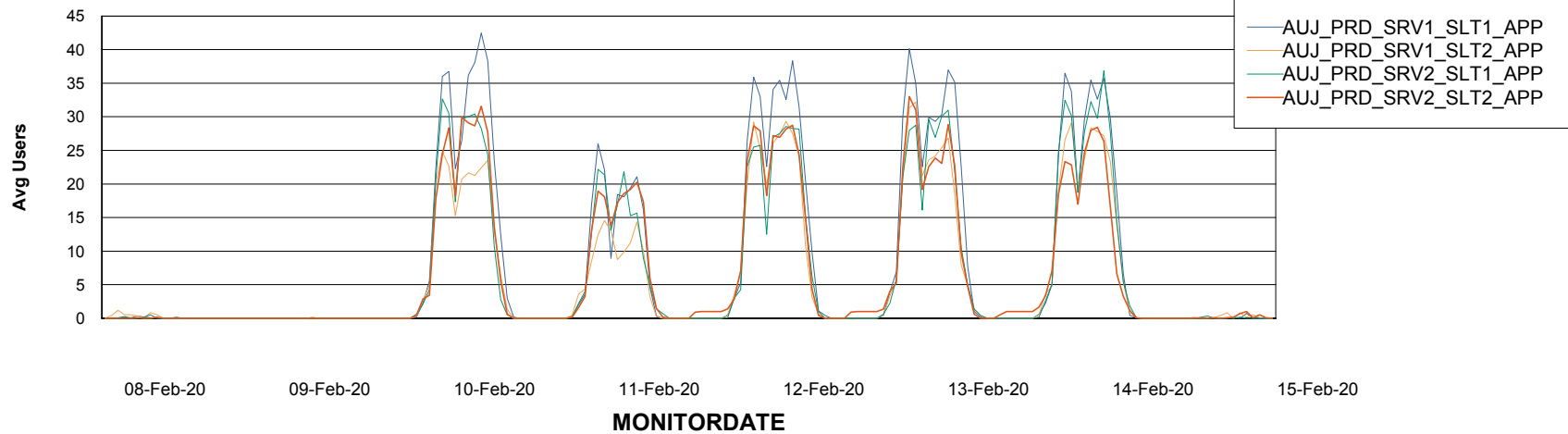


## ABSSolute Application Server Services

### Avg memory used per ABS Server Service



### Avg users per day per ABS server



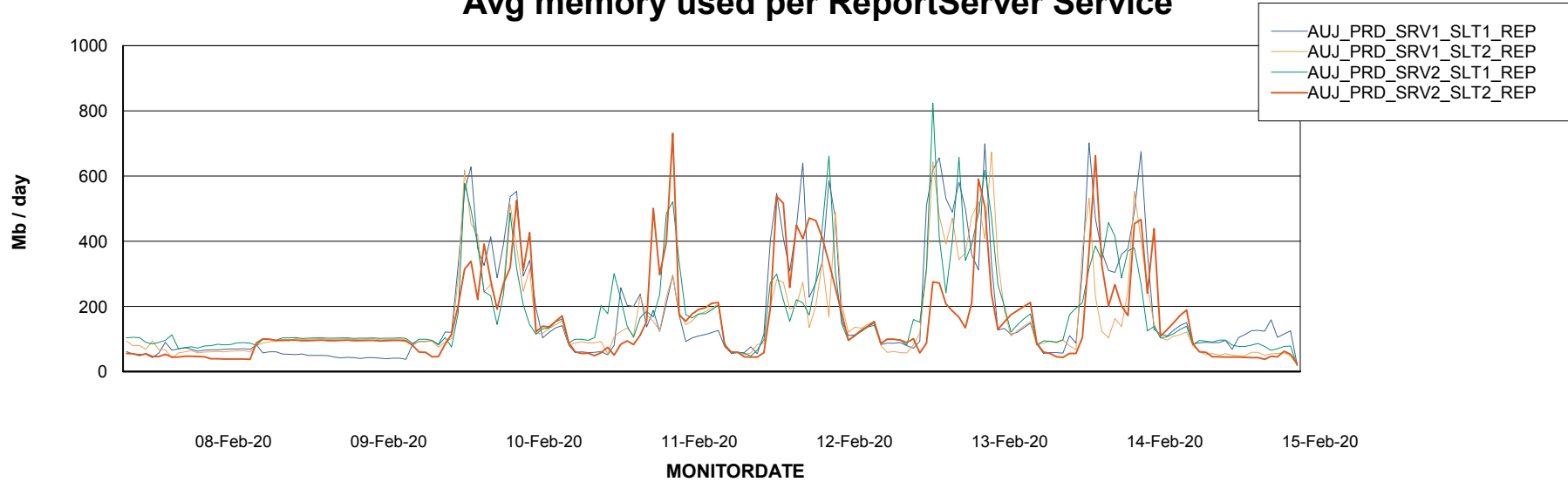
# Weekly SLA Customer Report

Customer AUJ\_Production  
Database ID 41



## ABSSolute Application ReportServer Services

### Avg memory used per ReportServer Service



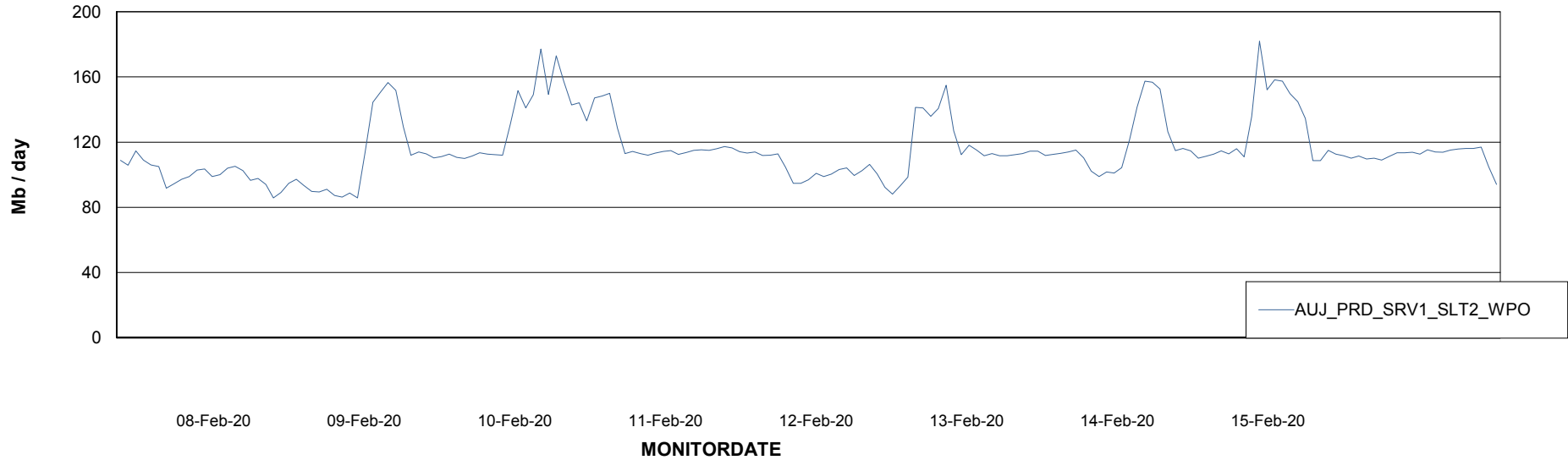
# Weekly SLA Customer Report

Customer AUJ\_Production  
Database ID 41



## ABSSolute Web Component Services

### Avg memory used per ABS Web component



# Weekly SLA Customer Report

Customer AUJ\_Production  
Database ID 41



## Disaster per ABS component

