

Weekly SLA Customer Report

Customer CUS Production
 Database ID 84



Harddisk Usage CUS_ABSBI

	Free disk space on c: (%)	Total disk space on c: (Gb)	Free disk space on d: (%)	Total disk space on d: (Gb)
08-Feb-20	76	199	67	800
07-Feb-20	76	199	67	800
06-Feb-20	76	199	67	800
05-Feb-20	76	199	67	800
04-Feb-20	76	199	68	800
03-Feb-20	76	199	68	800
02-Feb-20	76	199	68	800

Harddisk Usage CUS_ABSPROD1

	Free disk space on c: (%)	Total disk space on c: (Gb)
08-Feb-20	22	199
07-Feb-20	23	199
06-Feb-20	23	199
05-Feb-20	23	199
04-Feb-20	23	199
03-Feb-20	23	199
02-Feb-20	23	199

Weekly SLA Customer Report

Customer CUS Production
 Database ID 84



Harddisk Usage CUS_ABSPROD2

	Free disk space on c: (%)	Total disk space on c: (Gb)
08-Feb-20	17	199
07-Feb-20	17	199
06-Feb-20	17	199
05-Feb-20	18	199
04-Feb-20	18	199
03-Feb-20	18	199
02-Feb-20	18	199

Harddisk Usage CUS_ABSWEBPROD

	Free disk space on c: (%)	Total disk space on c: (Gb)
08-Feb-20	82	199
07-Feb-20	82	199
06-Feb-20	82	199
05-Feb-20	82	199
04-Feb-20	82	199
03-Feb-20	82	199
02-Feb-20	82	199

Weekly SLA Customer Report

Customer CUS Production
 Database ID 84



Harddisk Usage CUS_PrimaryDBSrv_ABSDB1

	Free disk space on c: (%)	Total disk space on c: (Gb)	Free disk space on d: (%)	Total disk space on d: (Gb)
08-Feb-20	74	199	53	1,024
07-Feb-20	74	199	51	1,024
06-Feb-20	74	199	51	1,024
05-Feb-20	74	199	52	1,024
04-Feb-20	74	199	52	1,024
03-Feb-20	74	199	53	1,024
02-Feb-20	74	199	53	1,024

Harddisk Usage CUS_StandByDBSrv_ABSDB2

	Free disk space on c: (%)	Total disk space on c: (Gb)	Free disk space on d: (%)	Total disk space on d: (Gb)
08-Feb-20	83	199	62	1,024
07-Feb-20	83	199	62	1,024
06-Feb-20	83	199	62	1,024
05-Feb-20	83	199	62	1,024
04-Feb-20	83	199	62	1,024
03-Feb-20	83	199	64	1,024
02-Feb-20	83	199	64	1,024

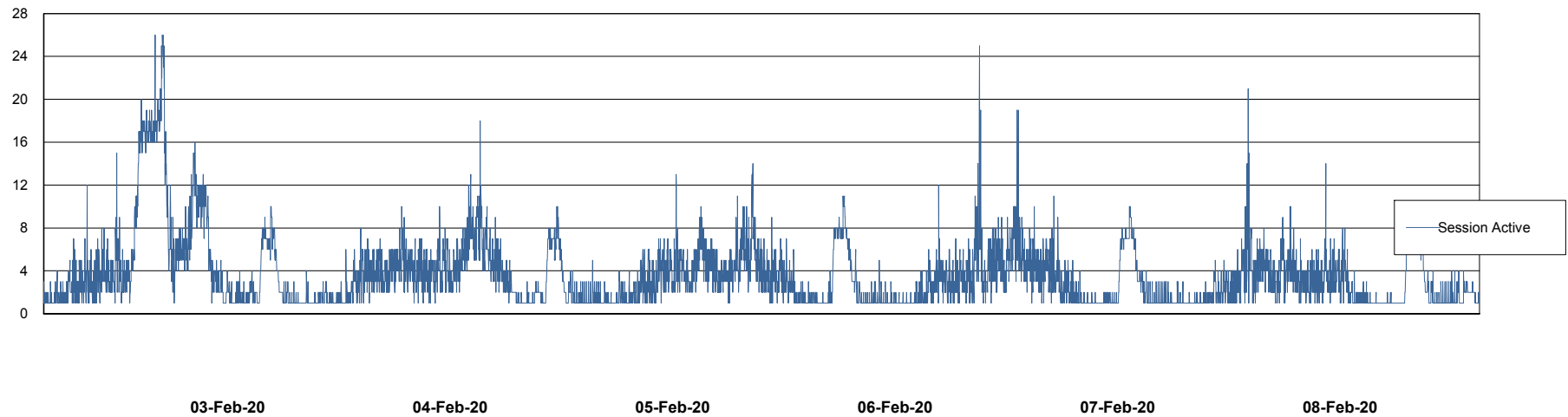
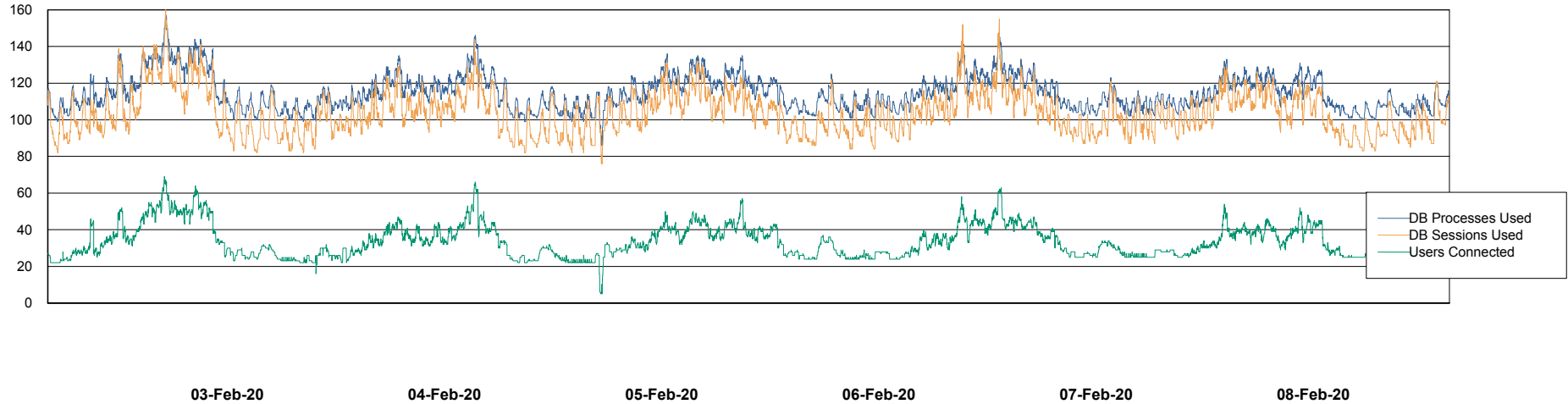
Weekly SLA Customer Report

Customer CUS Production
Database ID 84



Database Performance CUS_ProdDB_Primary

DB Processes Max 300
DB Sessions Max 472



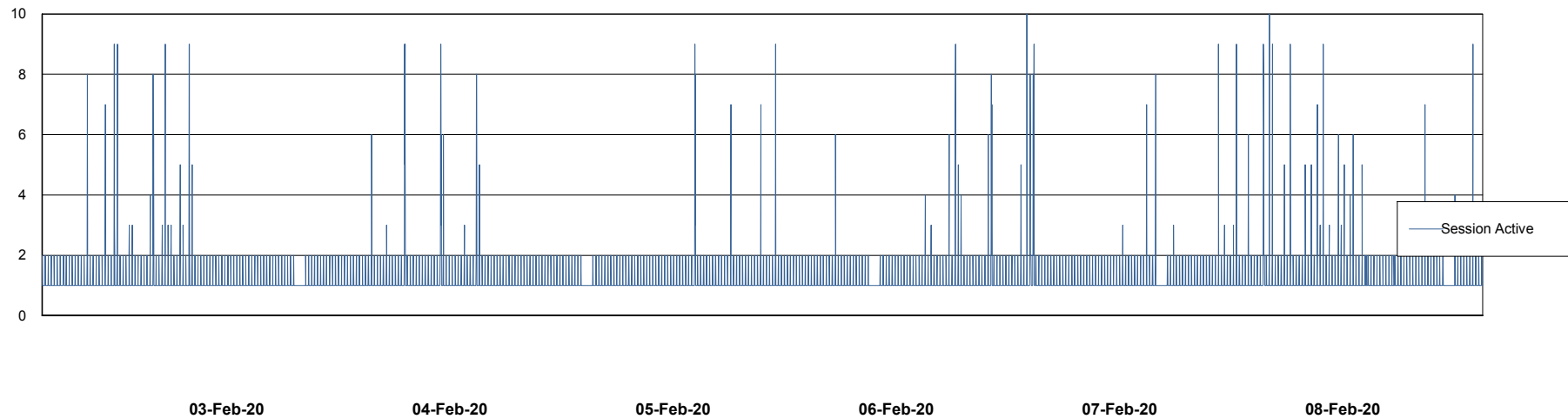
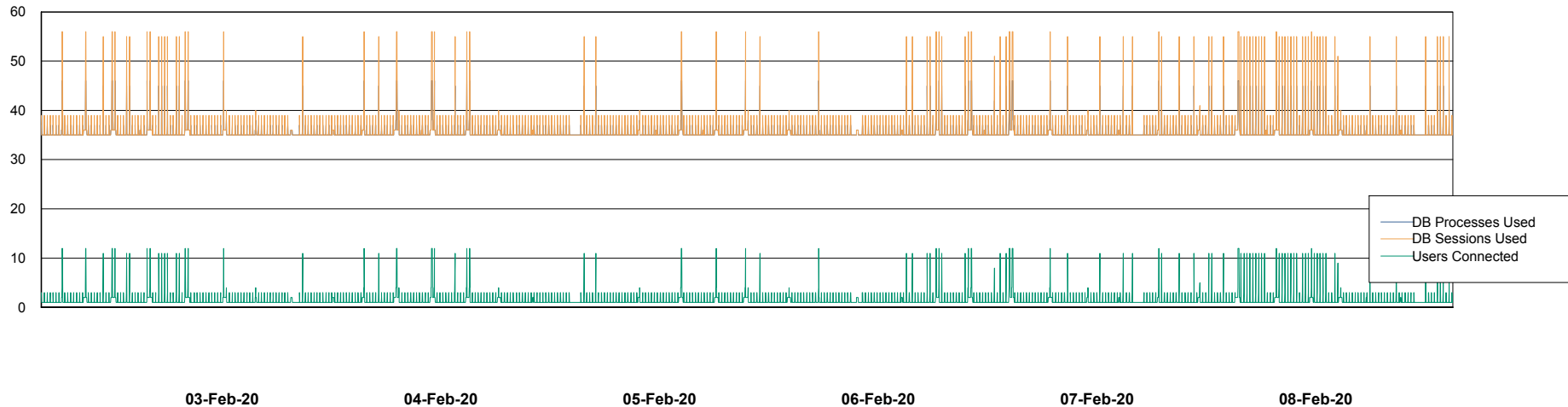
Weekly SLA Customer Report

Customer CUS Production
Database ID 84



Database Performance CUS_ProdDB_Standby

DB Processes Max 300
DB Sessions Max 472



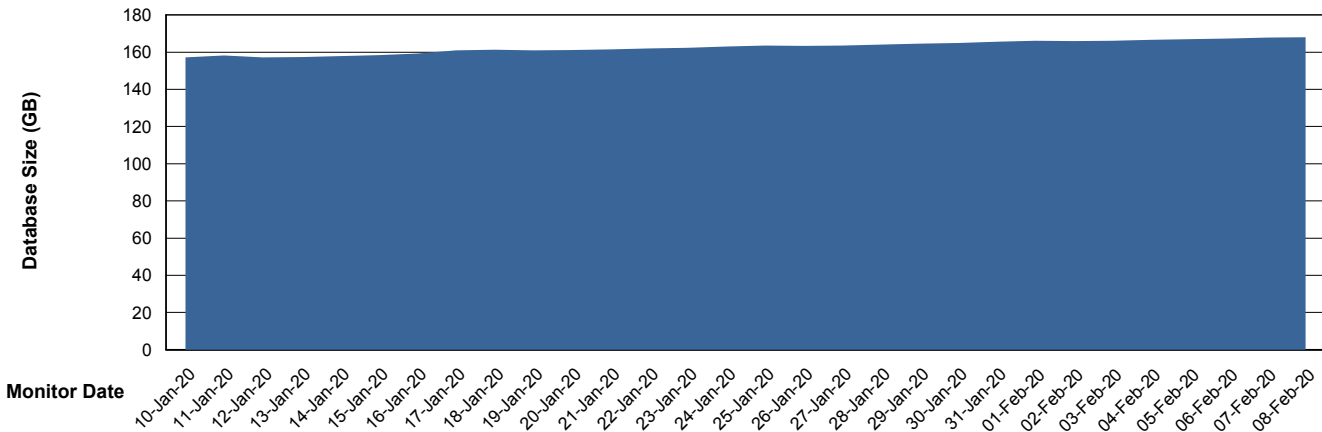
Weekly SLA Customer Report

Customer CUS Production
 Database ID 84



DATABASE SIZE CUS_ProdDB_Primary

Database growth over last month



Database Tablespace CUS_ProdDB_Primary

Date	Tablespace Name	Filesize (Gb)	Usedsize (Gb)	Percentage free
08-Feb-20	ABSDATA	129	70	46
	INDX	111	89	20
07-Feb-20	ABSDATA	129	70	46
	INDX	111	88	21
06-Feb-20	ABSDATA	129	70	46
	INDX	111	88	21
05-Feb-20	ABSDATA	129	70	46
	INDX	111	88	21
04-Feb-20	ABSDATA	129	70	46
	INDX	111	88	21
03-Feb-20	ABSDATA	129	70	46
	INDX	111	88	21
02-Feb-20	ABSDATA	129	70	46
	INDX	102	87	15

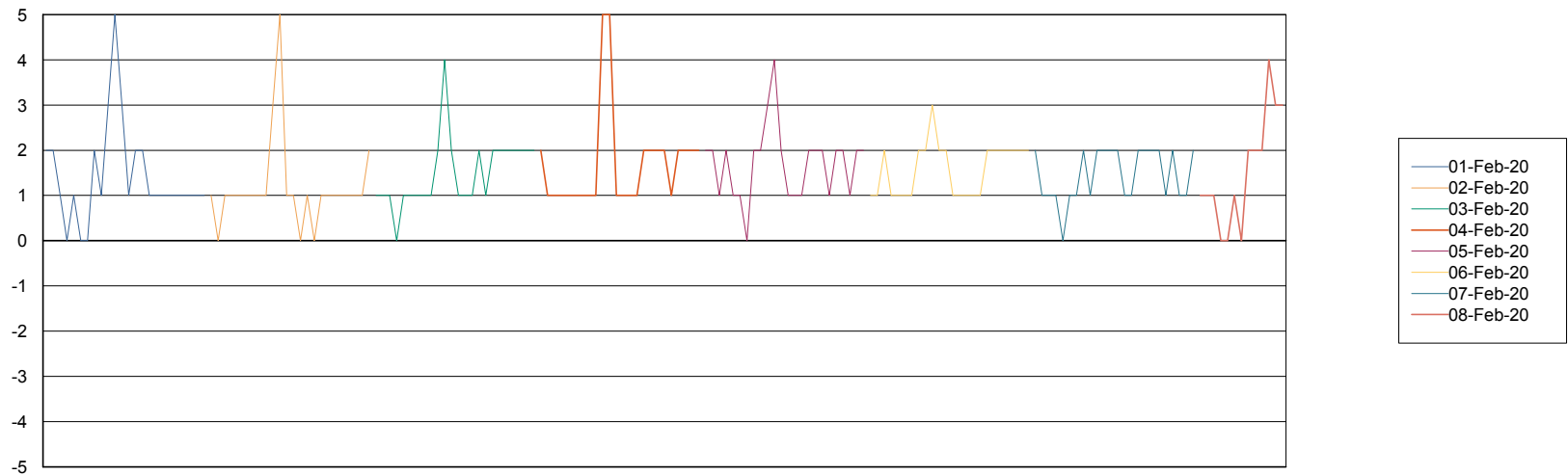
Weekly SLA Customer Report

Customer CUS Production
Database ID 84



Standby Database Health CUS Production

Recovery lag for last 7 days



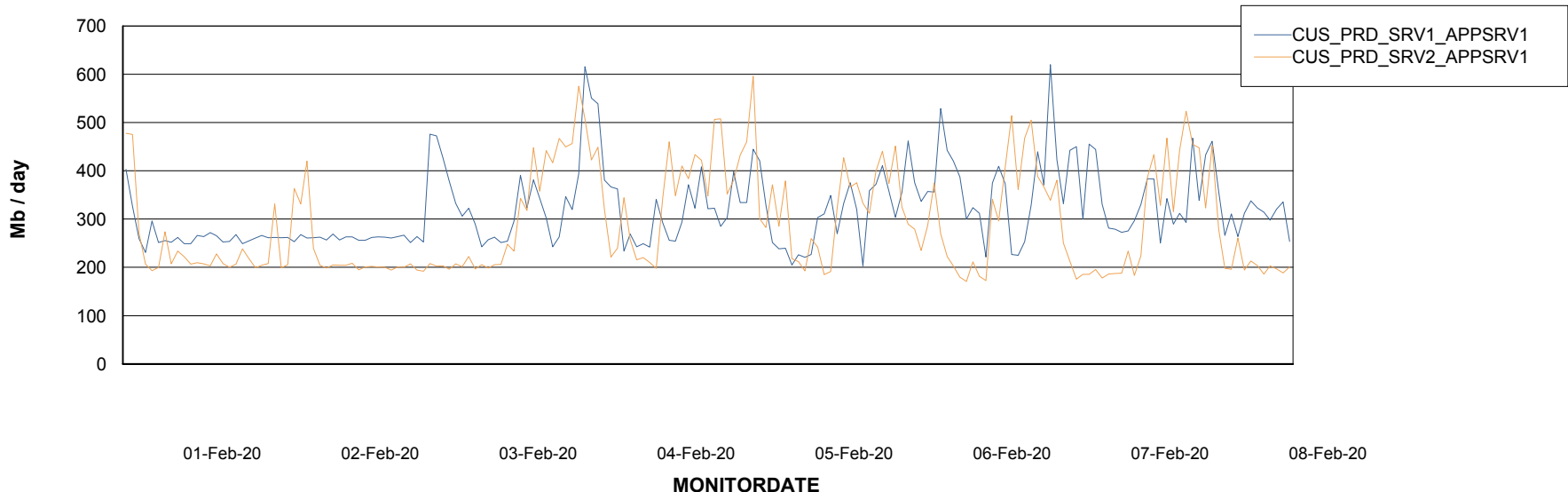
Weekly SLA Customer Report

Customer CUS Production
Database ID 84

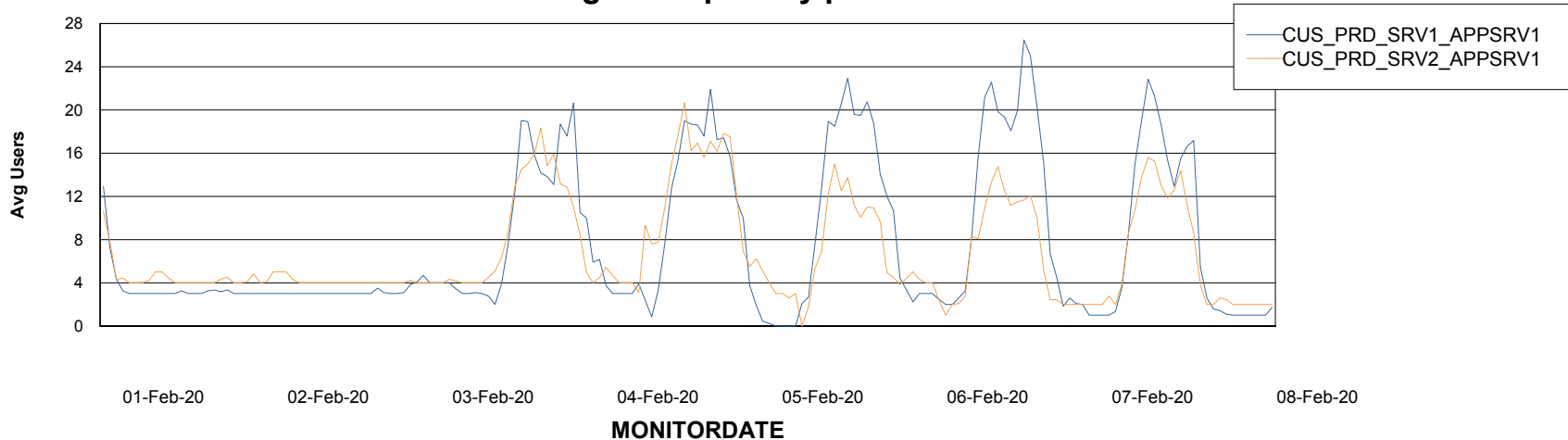


ABSSolute Application Server Services

Avg memory used per ABS Server Service



Avg users per day per ABS server



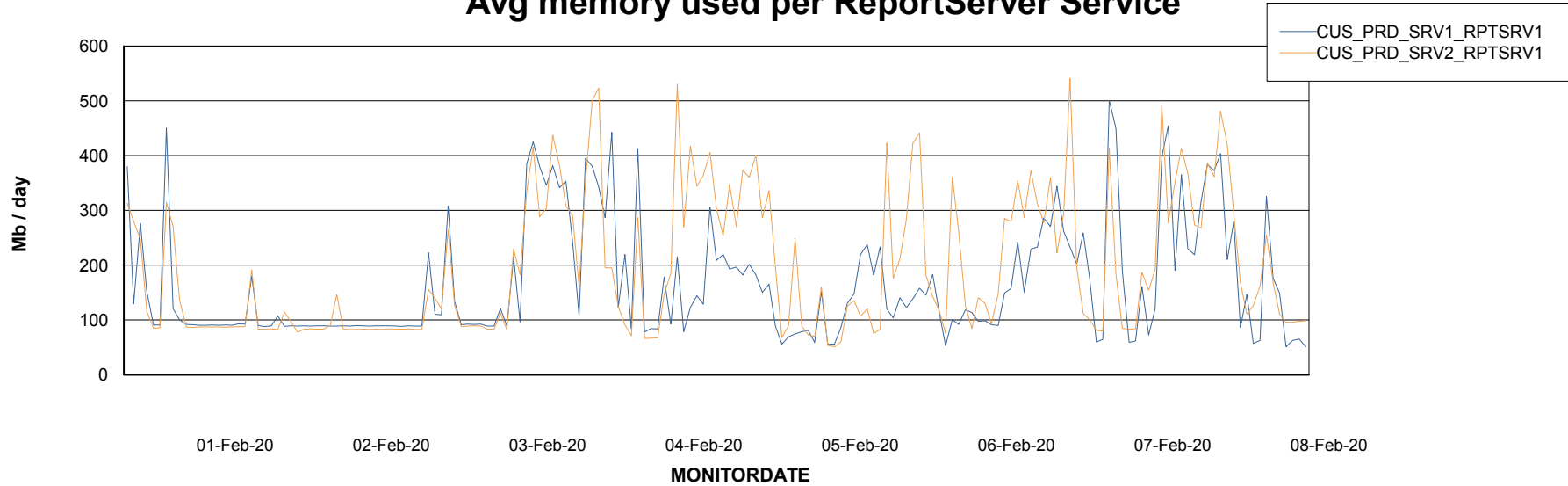
Weekly SLA Customer Report

Customer CUS Production
Database ID 84



ABSolute Web Component Services

Avg memory used per ReportServer Service



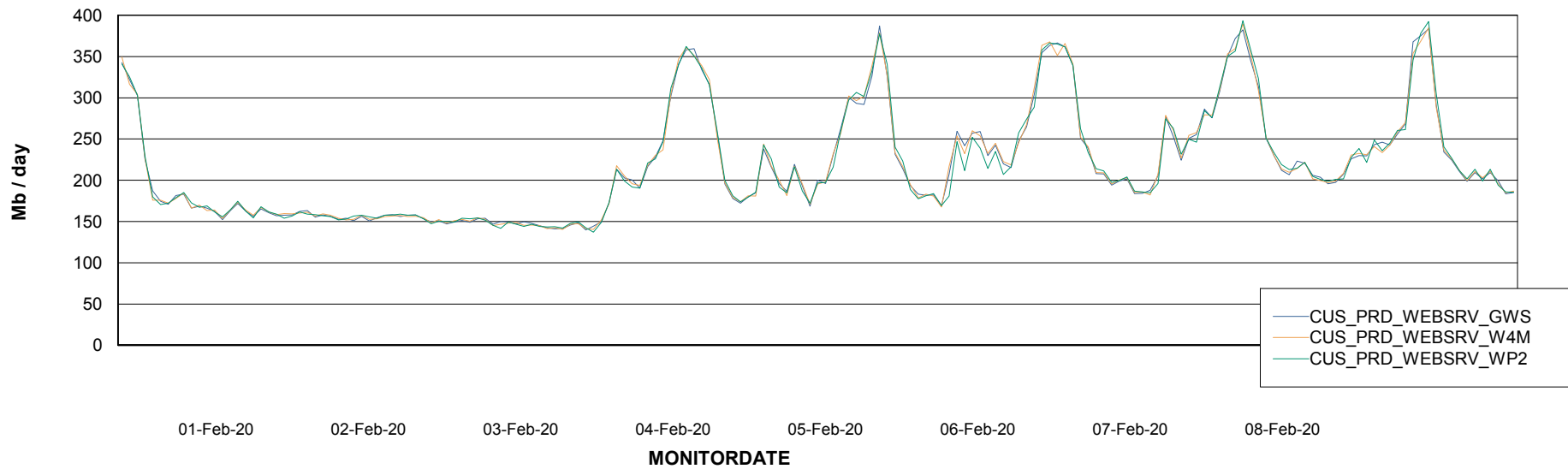
Weekly SLA Customer Report

Customer CUS Production
Database ID 84



ABSSolute Web Component Services

Avg memory used per ABS Web component



Weekly SLA Customer Report

Customer CUS Production
Database ID 84



Disaster per ABS component

