

Weekly SLA Customer Report

Customer PCO Production
Database ID 44



Harddisk Usage PCO_PRD_ORACLE1

	Free disk space on c: (%)	Total disk space on c: (Gb)	Free disk space on d: (%)	Total disk space on d: (Gb)
25-Jan-20	78	447	58	1,676
24-Jan-20	78	447	58	1,676
23-Jan-20	78	447	58	1,676
22-Jan-20	78	447	58	1,676
21-Jan-20	78	447	58	1,676
20-Jan-20	78	447	58	1,676
19-Jan-20	78	447	58	1,676

Harddisk Usage PCO_PRD_ORACLE2

	Free disk space on c: (%)	Total disk space on c: (Gb)	Free disk space on d: (%)	Total disk space on d: (Gb)
25-Jan-20	75	279	47	838
24-Jan-20	75	279	47	838
23-Jan-20	75	279	47	838
22-Jan-20	75	279	47	838
21-Jan-20	75	279	46	838
20-Jan-20	75	279	46	838
19-Jan-20	75	279	46	838

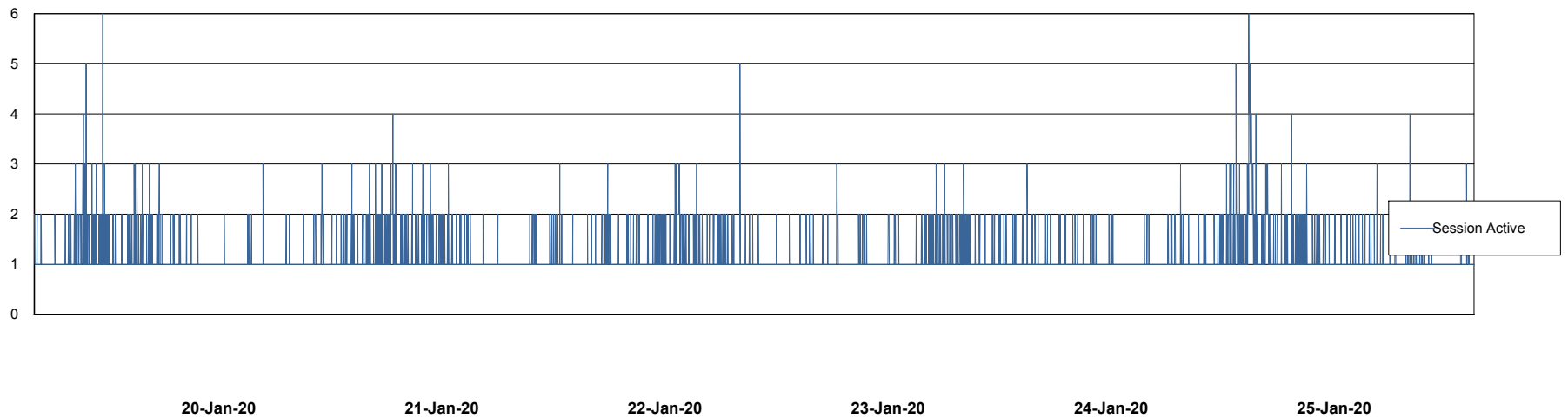
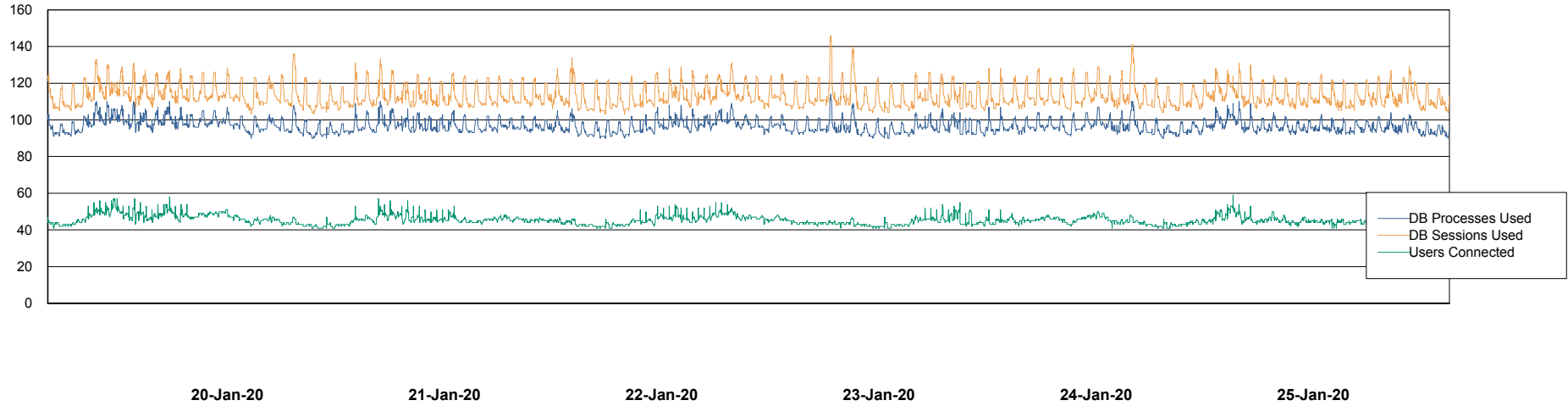
Weekly SLA Customer Report

Customer PCO Production
Database ID 44



Database Performance PCODB_Production

DB Processes Max 350
DB Sessions Max 560



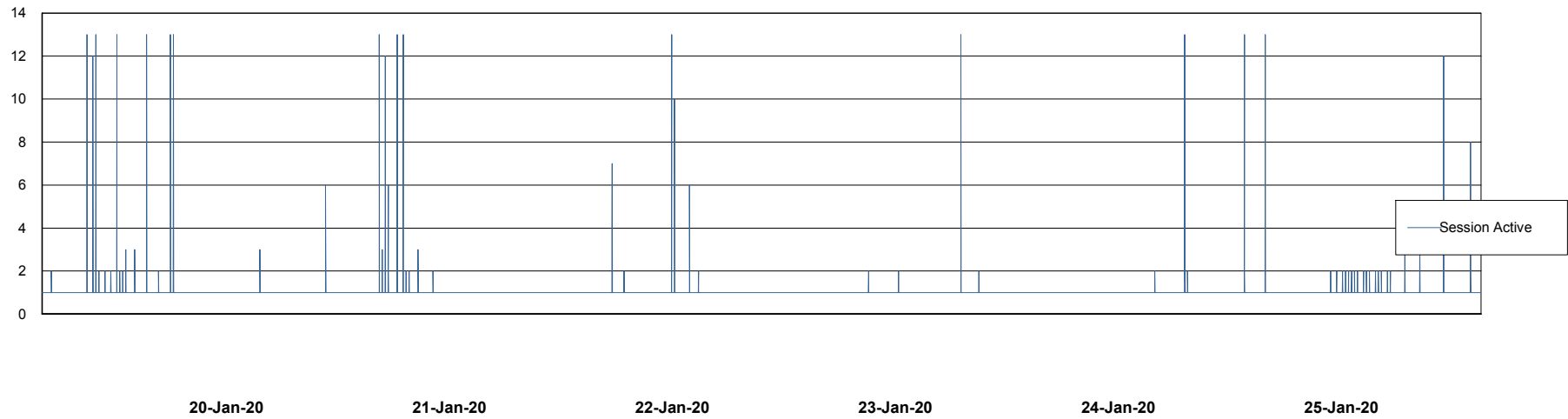
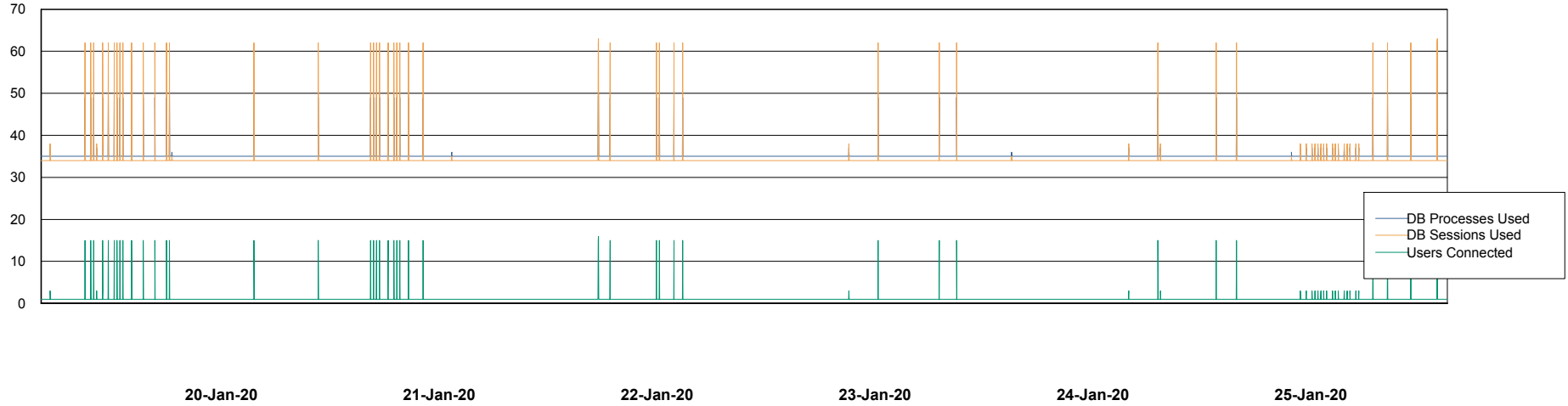
Weekly SLA Customer Report

Customer PCO Production
Database ID 44



Database Performance PCODB_Standby

DB Processes Max 350
DB Sessions Max 552



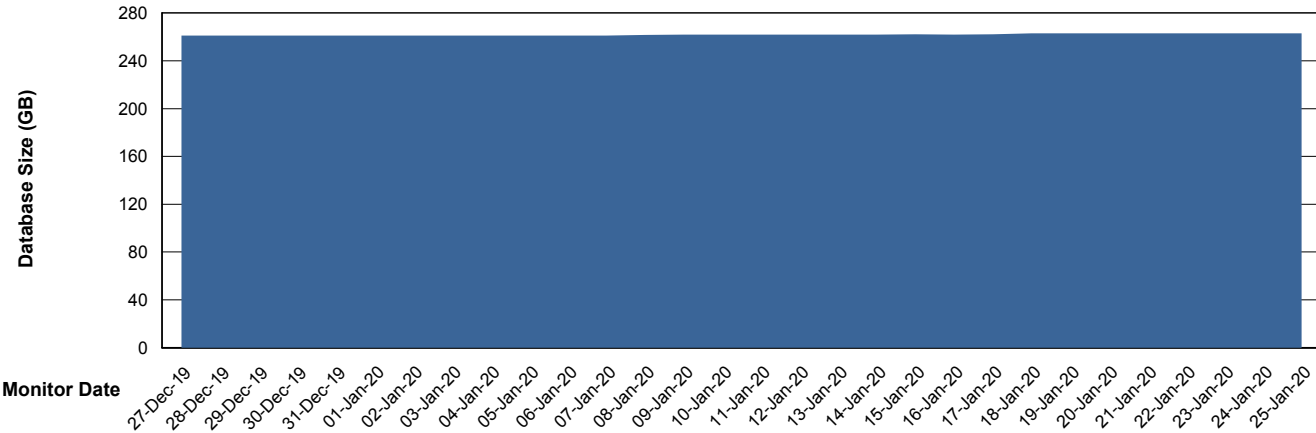
Weekly SLA Customer Report

Customer PCO Production
 Database ID 44



DATABASE SIZE PCODB_Production

Database growth over last month



Database Tablespace PCODB_Production

Date	Tablespace Name	Filesize (Gb)	Usedsize (Gb)	Percentage free
25-Jan-20	ABSDATA	150	94	37
	INDX	200	136	32
24-Jan-20	ABSDATA	150	94	37
	INDX	200	136	32
23-Jan-20	ABSDATA	150	94	37
	INDX	200	136	32
22-Jan-20	ABSDATA	150	94	37
	INDX	200	136	32
21-Jan-20	ABSDATA	150	94	37
	INDX	200	136	32
20-Jan-20	ABSDATA	150	94	37
	INDX	200	136	32
19-Jan-20	ABSDATA	150	94	37
	INDX	200	136	32

Weekly SLA Customer Report

Customer PCO Production
Database ID 44



Standby Database Health PCO Production

Recovery lag for last 7 days

