

Weekly SLA Customer Report

Customer CUS Production
Database ID 84



Harddisk Usage CUS_ABSBI

	Free disk space on c: (%)	Total disk space on c: (Gb)	Free disk space on d: (%)	Total disk space on d: (Gb)
25-Jan-20	76	199	68	800
24-Jan-20	76	199	68	800
23-Jan-20	77	199	68	800
22-Jan-20	77	199	68	800
21-Jan-20	77	199	68	800
20-Jan-20	76	199	68	800
19-Jan-20	77	199	68	800

Harddisk Usage CUS_ABSPROD1

	Free disk space on c: (%)	Total disk space on c: (Gb)
25-Jan-20	26	199
24-Jan-20	26	199
23-Jan-20	26	199
22-Jan-20	34	199
21-Jan-20	43	199
20-Jan-20	43	199
19-Jan-20	44	199

Weekly SLA Customer Report

Customer CUS Production
 Database ID 84



Harddisk Usage CUS_ABSPROD2

	Free disk space on c: (%)	Total disk space on c: (Gb)
25-Jan-20	19	199
24-Jan-20	14	199
23-Jan-20	14	199
22-Jan-20	14	199
21-Jan-20	14	199
20-Jan-20	14	199
19-Jan-20	14	199

Harddisk Usage CUS_ABSWEBPROD

	Free disk space on c: (%)	Total disk space on c: (Gb)
25-Jan-20	81	199
24-Jan-20	81	199
23-Jan-20	82	199
22-Jan-20	82	199
21-Jan-20	82	199
20-Jan-20	81	199
19-Jan-20	82	199

Weekly SLA Customer Report

Customer CUS Production
Database ID 84



Harddisk Usage CUS_PrimaryDBSrv_ABSDB1

	Free disk space on c: (%)	Total disk space on c: (Gb)	Free disk space on d: (%)	Total disk space on d: (Gb)
25-Jan-20	74	199	53	1,024
24-Jan-20	74	199	52	1,024
23-Jan-20	75	199	52	1,024
22-Jan-20	74	199	52	1,024
21-Jan-20	74	199	52	1,024
20-Jan-20	74	199	52	1,024
19-Jan-20	75	199	52	1,024

Harddisk Usage CUS_StandByDBSrv_ABSDB2

	Free disk space on c: (%)	Total disk space on c: (Gb)	Free disk space on d: (%)	Total disk space on d: (Gb)
25-Jan-20	83	199	62	1,024
24-Jan-20	83	199	62	1,024
23-Jan-20	83	199	62	1,024
22-Jan-20	83	199	62	1,024
21-Jan-20	83	199	62	1,024
20-Jan-20	83	199	63	1,024
19-Jan-20	83	199	63	1,024

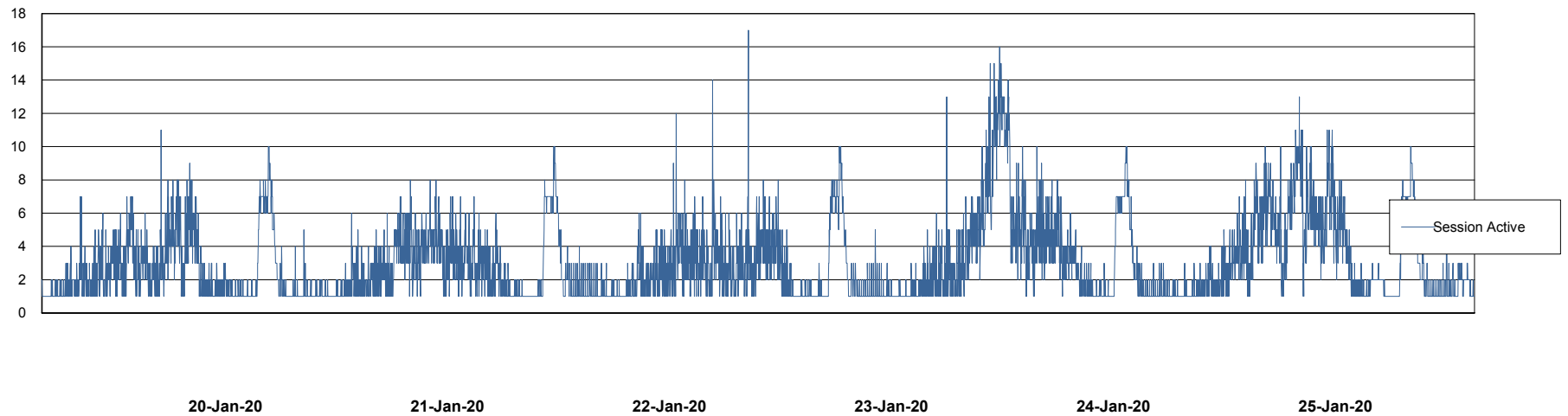
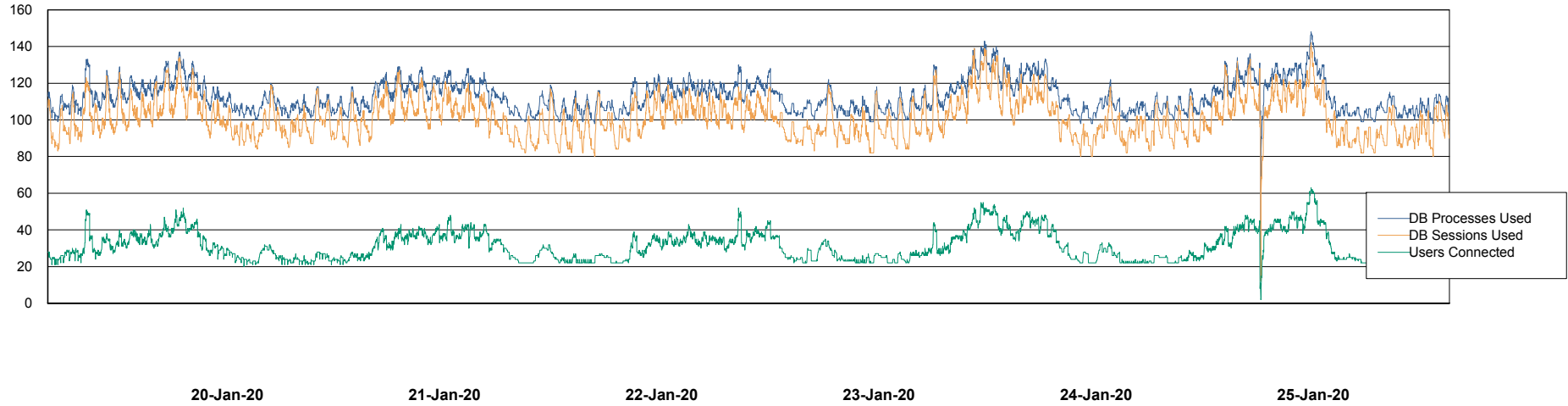
Weekly SLA Customer Report

Customer CUS Production
Database ID 84



Database Performance CUS_ProdDB_Primary

DB Processes Max 300
DB Sessions Max 472



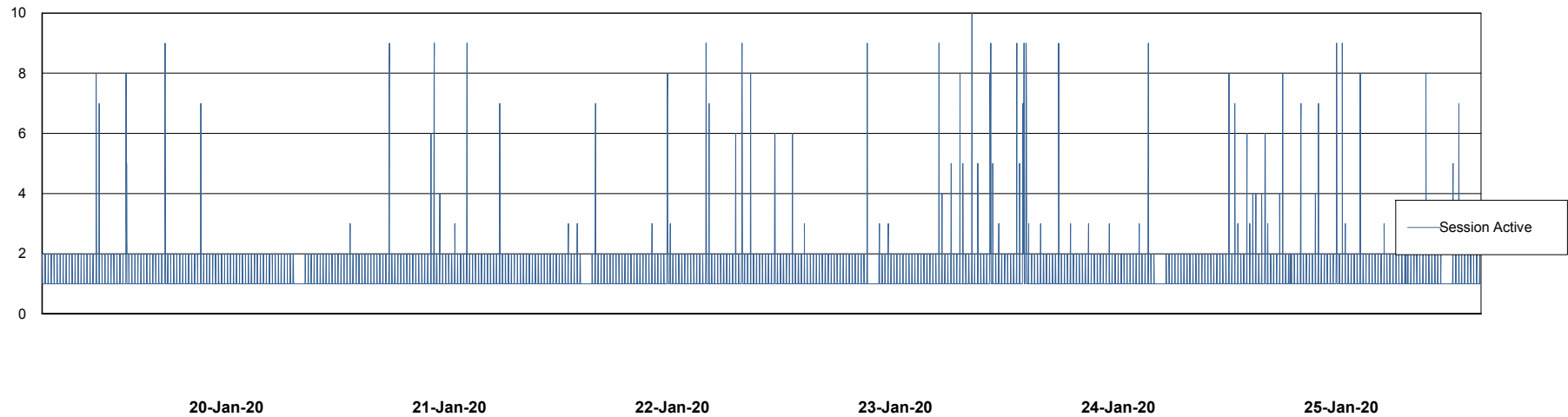
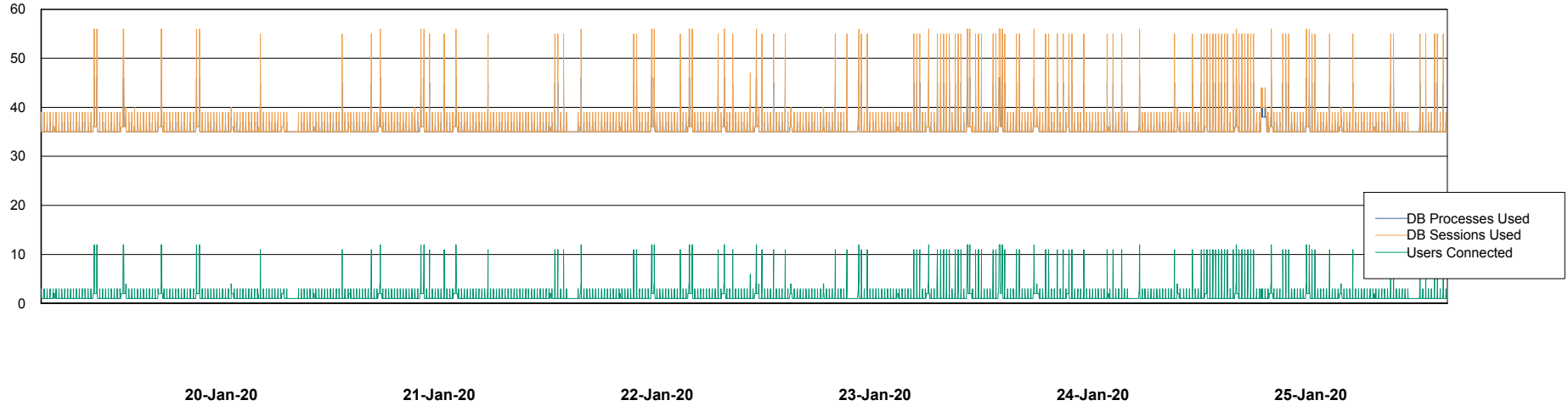
Weekly SLA Customer Report

Customer CUS Production
Database ID 84



Database Performance CUS_ProdDB_Standby

DB Processes Max 300
DB Sessions Max 472



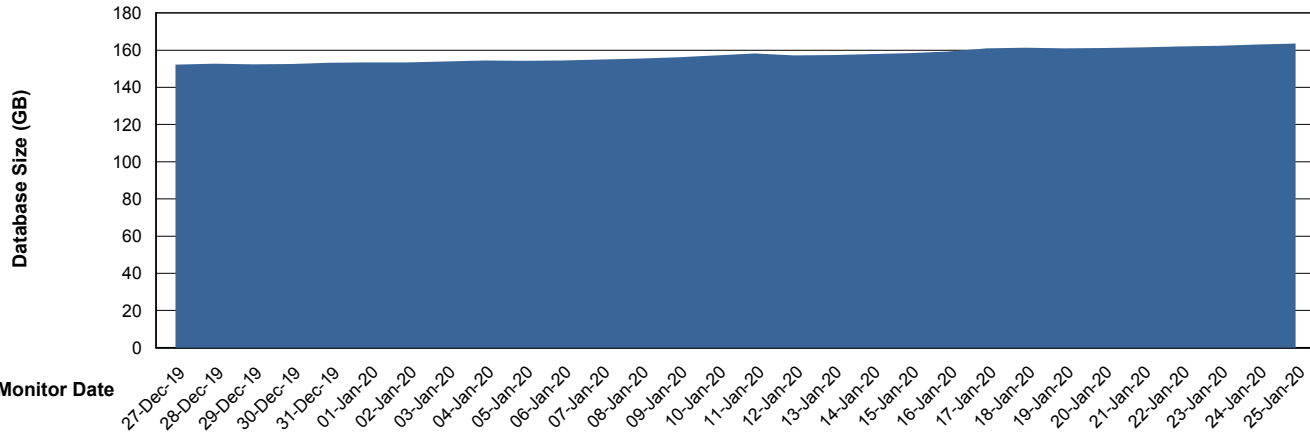
Weekly SLA Customer Report

Customer CUS Production
 Database ID 84



DATABASE SIZE CUS_ProdDB_Primary

Database growth over last month



Database Tablespace CUS_ProdDB_Primary

Date	Tablespace Name	Filesize (Gb)	Usedsize (Gb)	Percentage free
25-Jan-20	ABSDATA	129	68	47
	INDX	102	84	18
24-Jan-20	ABSDATA	129	68	47
	INDX	102	84	18
23-Jan-20	ABSDATA	129	68	47
	INDX	102	84	18
22-Jan-20	ABSDATA	129	68	47
	INDX	102	84	18
21-Jan-20	ABSDATA	129	68	47
	INDX	102	84	18
20-Jan-20	ABSDATA	129	68	47
	INDX	102	84	18
19-Jan-20	ABSDATA	129	68	47
	INDX	102	84	18

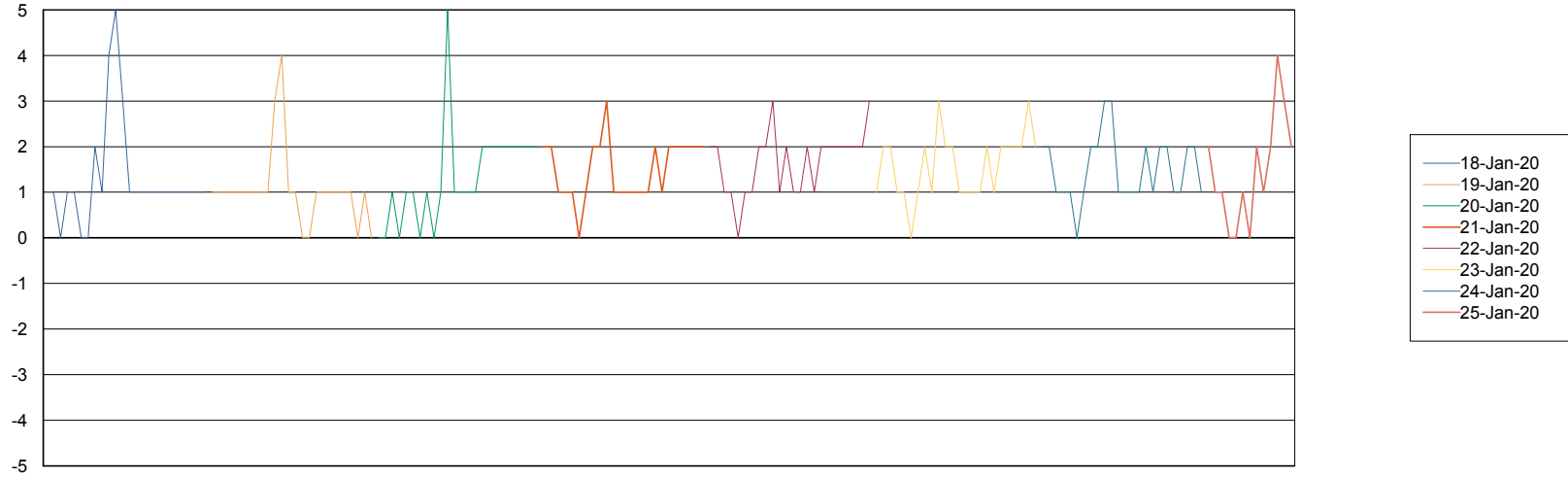
Weekly SLA Customer Report

Customer CUS Production
Database ID 84



Standby Database Health CUS Production

Recovery lag for last 7 days



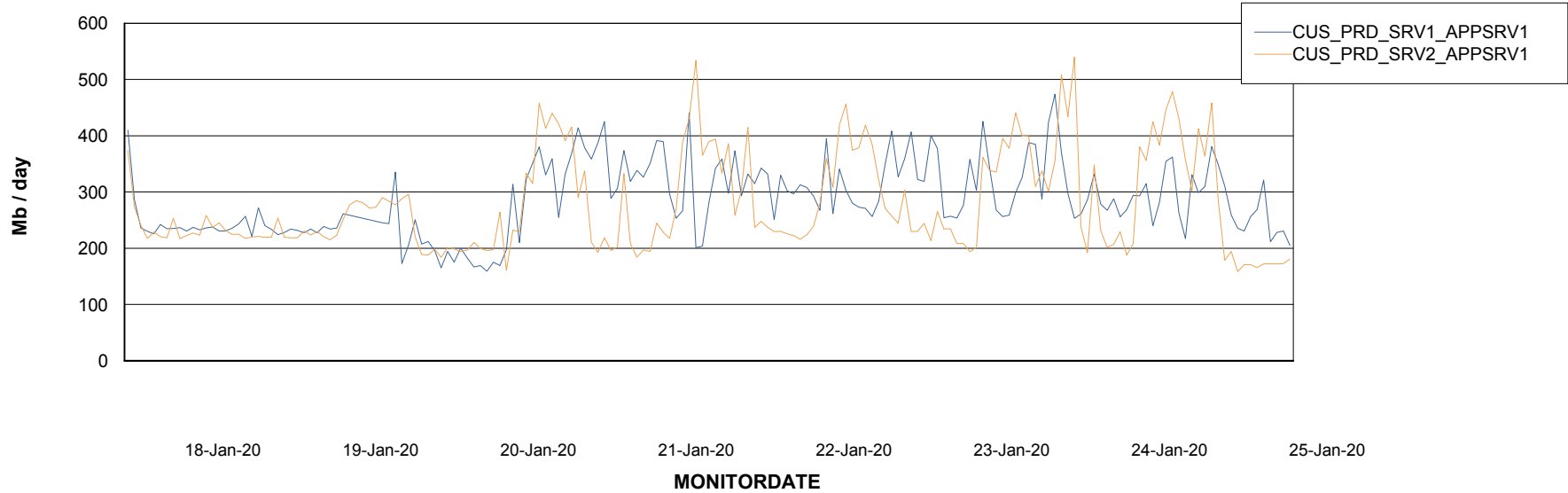
Weekly SLA Customer Report

Customer CUS Production
Database ID 84

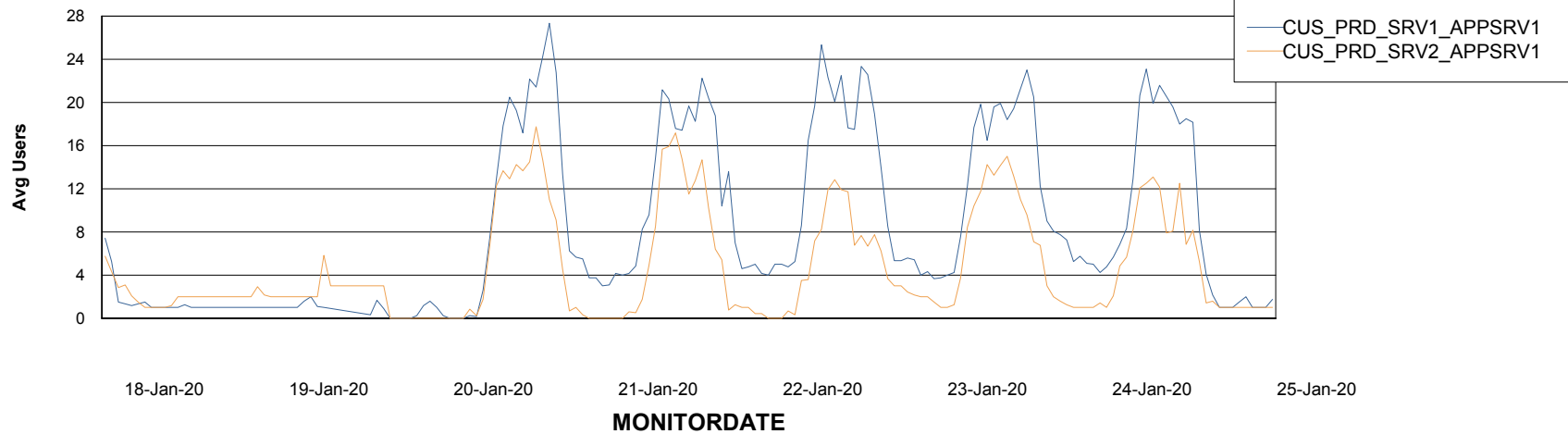


ABSSolute Application Server Services

Avg memory used per ABS Server Service



Avg users per day per ABS server



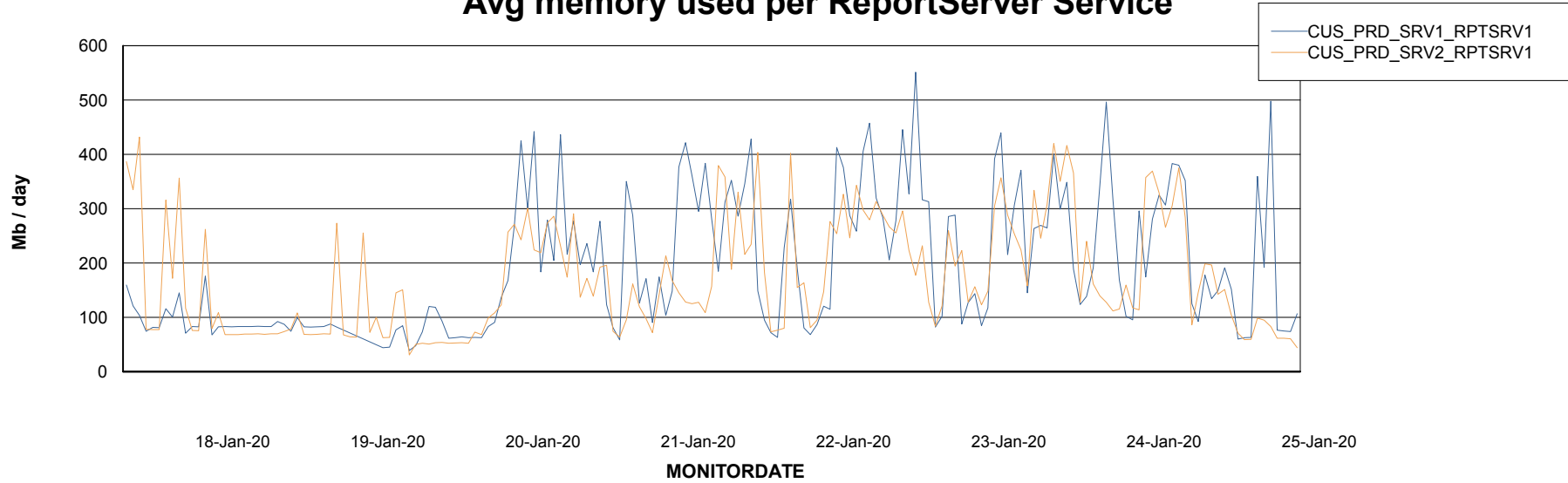
Weekly SLA Customer Report

Customer CUS Production
Database ID 84



ABSSolute Web Component Services

Avg memory used per ReportServer Service



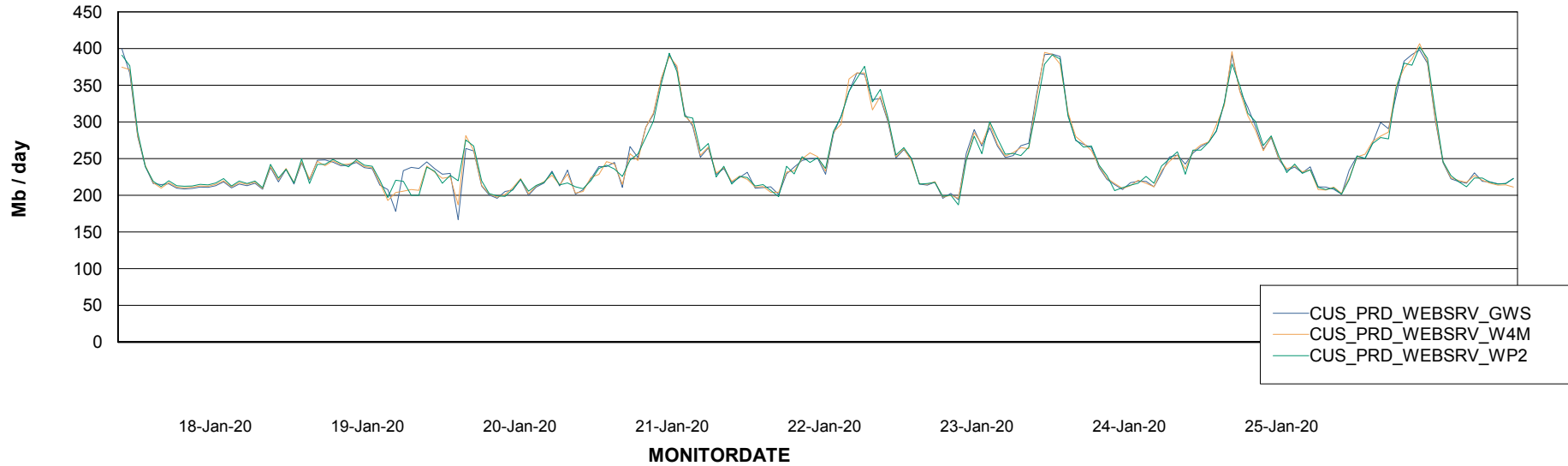
Weekly SLA Customer Report

Customer CUS Production
Database ID 84



ABSSolute Web Component Services

Avg memory used per ABS Web component



Weekly SLA Customer Report

Customer CUS Production
Database ID 84



Disaster per ABS component

