

Weekly SLA Customer Report

Customer VEN_Production
Database ID 35



Harddisk Usage ABSVEN06 Primary DB Server 2019

	Free disk space on c: (%)	Total disk space on c: (Gb)	Free disk space on d: (%)	Total disk space on d: (Gb)	Free disk space on e: (%)	Total disk space on e: (Gb)
11-Jan-20	73	102	52	601	81	400
10-Jan-20	73	102	52	601	85	400
09-Jan-20	73	102	52	601	85	400
08-Jan-20	73	102	52	601	84	400
07-Jan-20	73	102	52	601	84	400
06-Jan-20	73	102	52	601	85	400
05-Jan-20	73	102	52	601	85	400

Harddisk Usage ABSVEN07 Standby DB Server 2019

	Free disk space on c: (%)	Total disk space on c: (Gb)	Free disk space on d: (%)	Total disk space on d: (Gb)	Free disk space on e: (%)	Total disk space on e: (Gb)
11-Jan-20	58	102	24	601	92	400
10-Jan-20	58	102	24	601	93	400
09-Jan-20	58	102	24	601	93	400
08-Jan-20	58	102	24	601	92	400
07-Jan-20	58	102	24	601	92	400
06-Jan-20	58	102	24	601	93	400
05-Jan-20	58	102	24	601	93	400

Weekly SLA Customer Report

Customer VEN_Production
 Database ID 35



Harddisk Usage VEN_PRD_DB_BI

	Free disk space on c: (%)	Total disk space on c: (Gb)	Free disk space on d: (%)	Total disk space on d: (Gb)
11-Jan-20	58	102	47	601
10-Jan-20	58	102	47	601
09-Jan-20	58	102	47	601
08-Jan-20	58	102	47	601
07-Jan-20	58	102	47	601
06-Jan-20	58	102	48	601
05-Jan-20	58	102	48	601

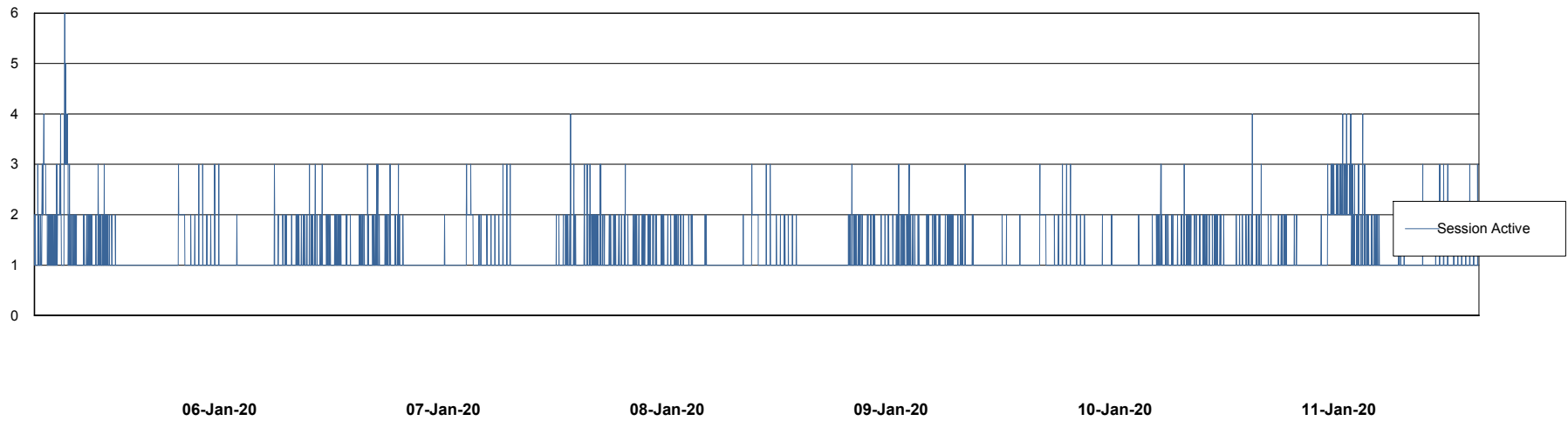
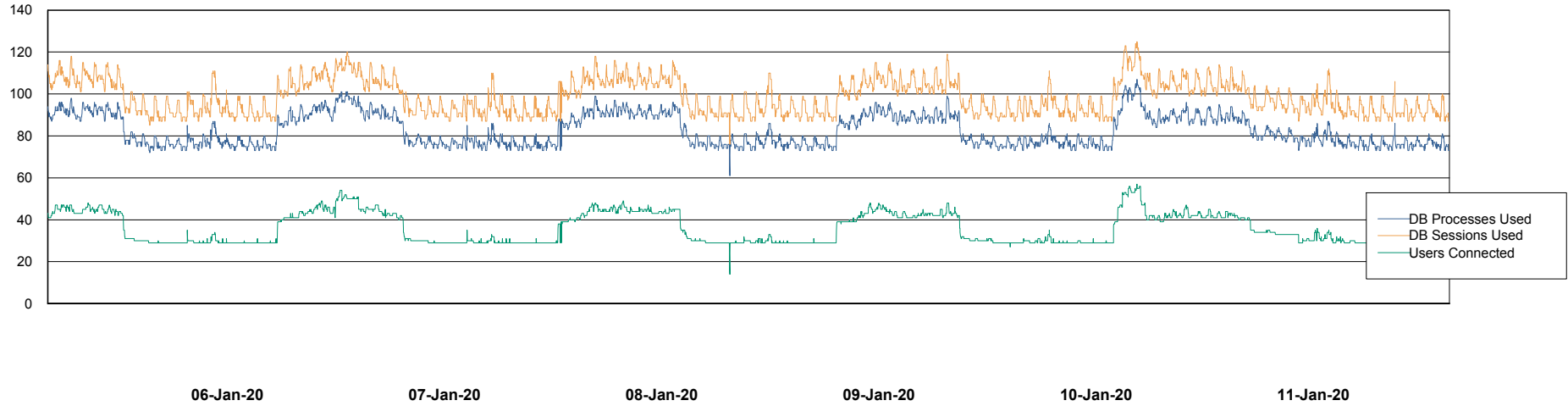
Weekly SLA Customer Report

Customer VEN_Production
Database ID 35



Database Performance ABSVEN06 Primary DB 2019

DB Processes Max 300
DB Sessions Max 472



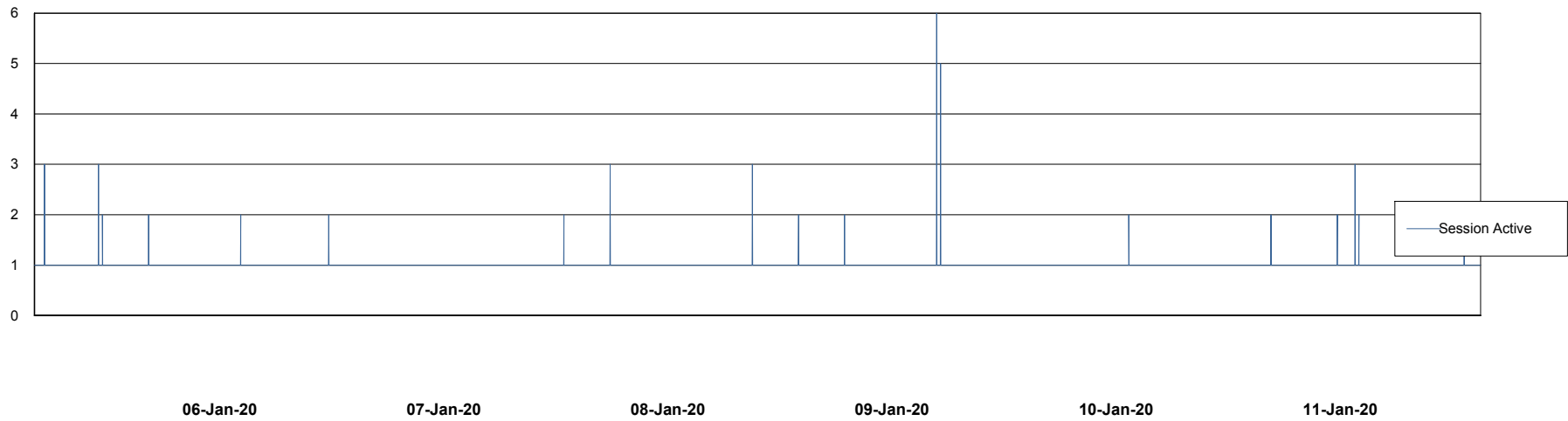
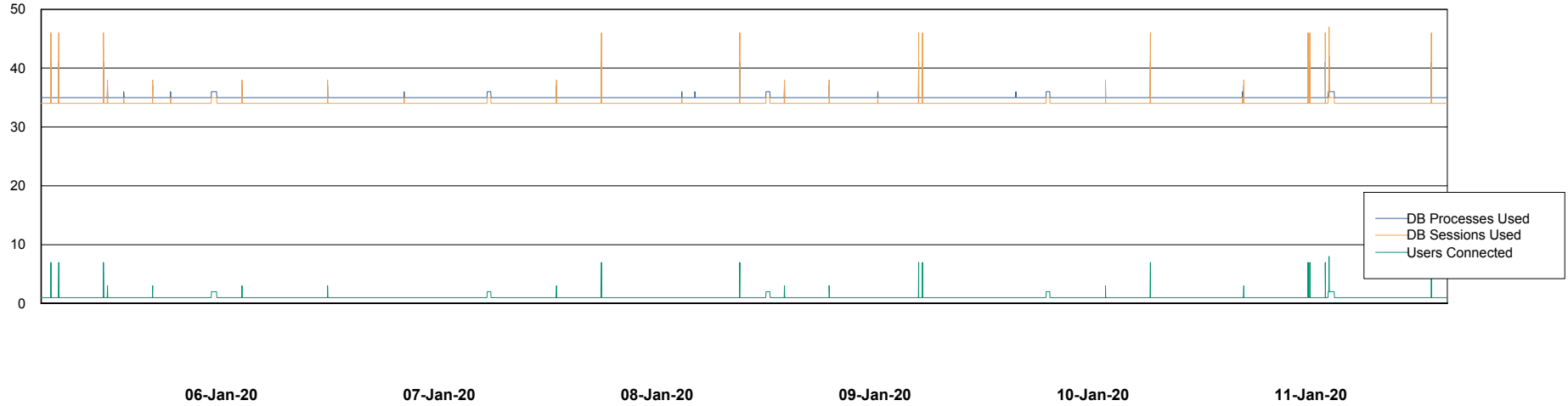
Weekly SLA Customer Report

Customer VEN_Production
Database ID 35



Database Performance ABSVEN07 Standby DB 2019

DB Processes Max 300
DB Sessions Max 472



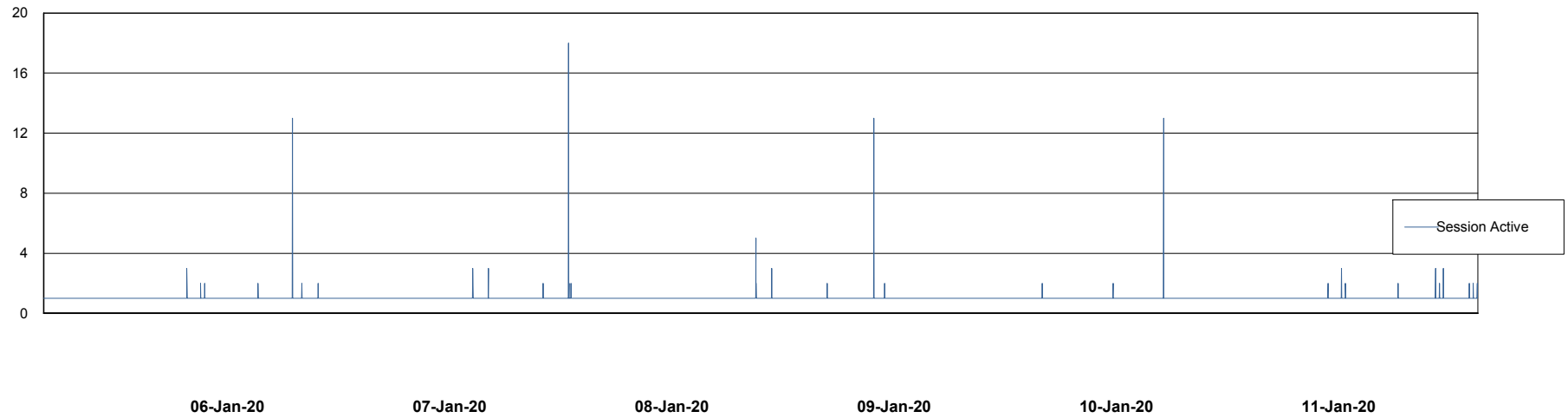
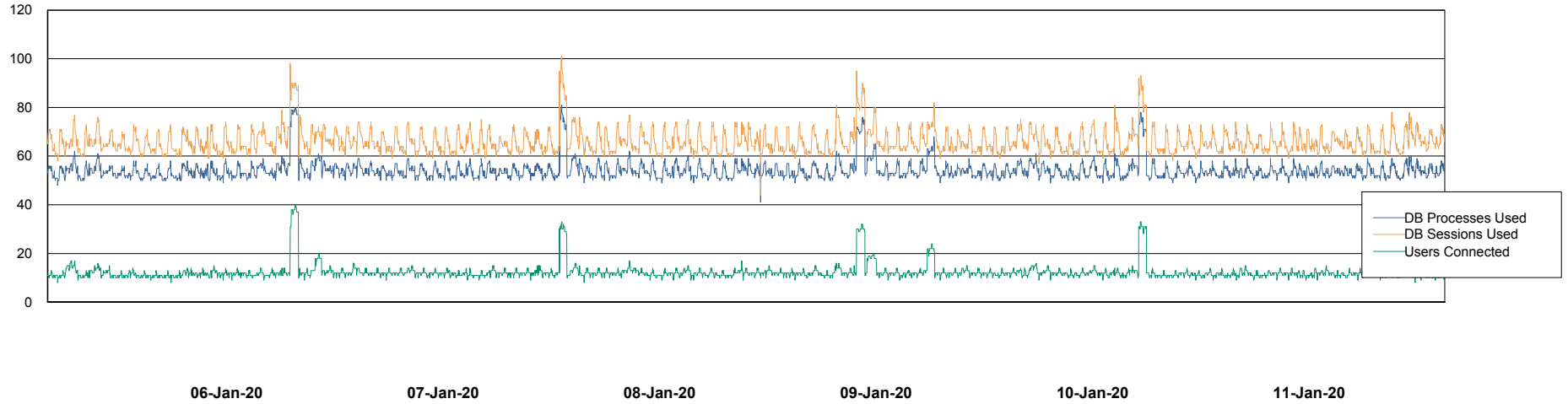
Weekly SLA Customer Report

Customer VEN_Production
Database ID 35



Database Performance VENDB_BI

DB Processes Max 500
DB Sessions Max 772



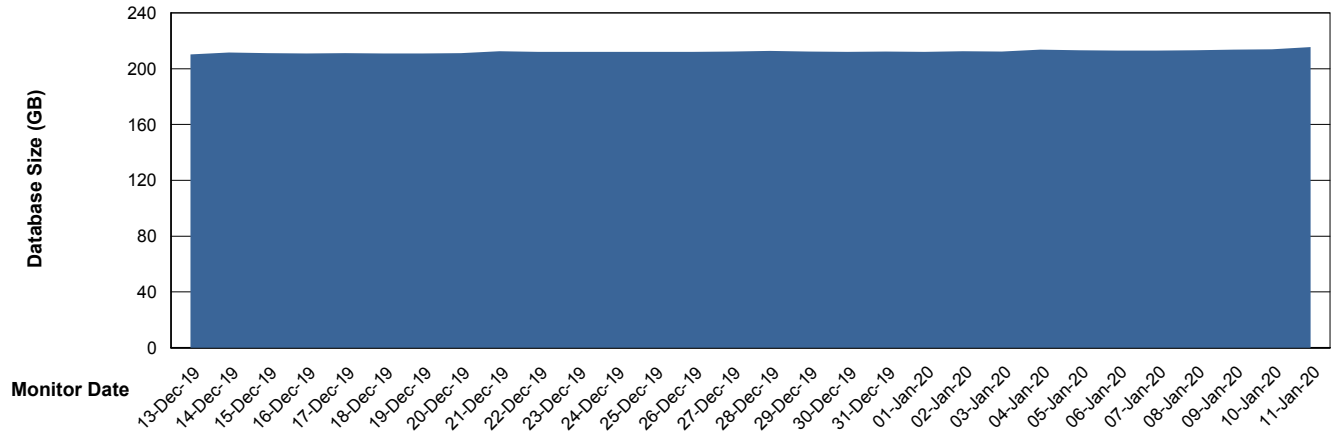
Weekly SLA Customer Report

Customer VEN_Production
Database ID 35



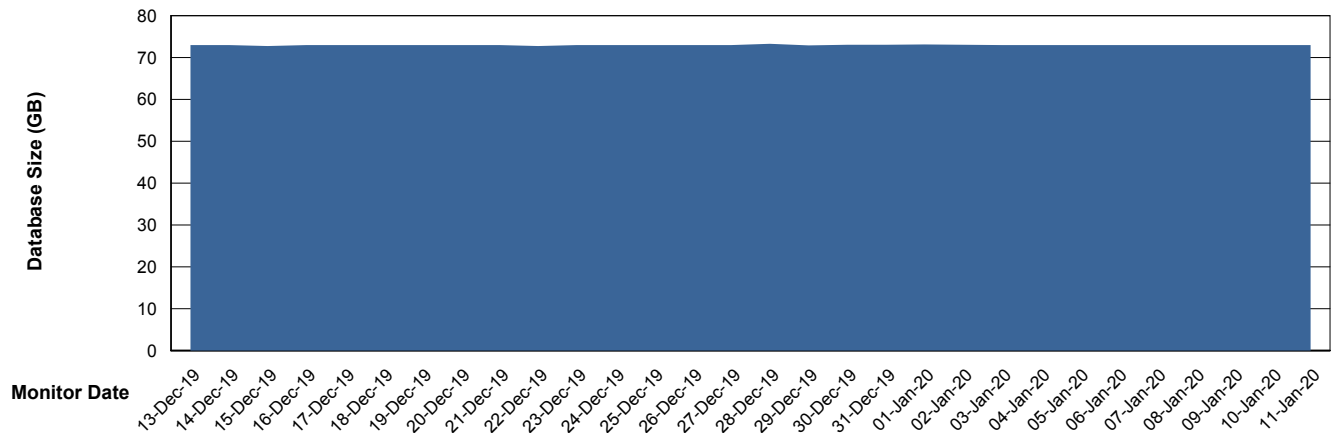
DATABASE SIZE ABSVEN06 Primary DB 2019

Database growth over last month



DATABASE SIZE VENDB_BI

Database growth over last month



Weekly SLA Customer Report

Customer VEN_Production
Database ID 35



Database Tablespace ABSVEN06 Primary DB 2019

Date	Tablespace Name	Filesize (Gb)	Usedsize (Gb)	Percentage free
11-Jan-20	ABSDATA	120	103	14
	INDX	120	102	15
10-Jan-20	ABSDATA	120	102	15
	INDX	120	102	15
09-Jan-20	ABSDATA	120	102	15
	INDX	120	102	15
08-Jan-20	ABSDATA	120	102	15
	INDX	120	102	15
07-Jan-20	ABSDATA	120	102	15
	INDX	120	102	15
06-Jan-20	ABSDATA	120	102	15
	INDX	120	102	15
05-Jan-20	ABSDATA	120	102	15
	INDX	120	102	15

Weekly SLA Customer Report

Customer VEN_Production
 Database ID 35



Database Tablespace VENDB_BI

Date	Tablespace Name	Filesize (Gb)	Usedsize (Gb)	Percentage free
11-Jan-20	ABSDATA	35	25	29
	INDX	42	37	12
10-Jan-20	ABSDATA	35	25	29
	INDX	42	37	12
09-Jan-20	ABSDATA	35	25	29
	INDX	42	37	12
08-Jan-20	ABSDATA	35	25	29
	INDX	42	37	12
07-Jan-20	ABSDATA	35	25	29
	INDX	42	37	12
06-Jan-20	ABSDATA	35	25	29
	INDX	42	37	12
05-Jan-20	ABSDATA	35	25	29
	INDX	42	37	12

BI Status and last ETL error for VENDB_BI

	Sun 5/1/2020	Mon 6/1/2020	Tue 7/1/2020	Wed 8/1/2020	Thu 9/1/2020	Fri 10/1/2020	Sat 11/1/2020
ABS DataWarehouse ETL Health	Not OK	Not OK	Not OK	Not OK	Not OK	Not OK	Not OK
ABS DWHStaging ETL Health	Not OK	Not OK	Not OK	Not OK	Not OK	Not OK	Not OK

BI last ETL error for VENDB_BI

Tue, 7-01-2020	ORA-12899: value too large for column "ABSDWHSTAGING"."STFACT_WORK_ORDERS"."REFERENCE_NUMBER" (actual: 31, maximum: 30)
Mon, 6-01-2020	ORA-12899: value too large for column "ABSDWHSTAGING"."STFACT_WORK_ORDERS"."REFERENCE_NUMBER" (actual: 31, maximum: 30)
Fri, 10-01-2020	ORA-12899: value too large for column "ABSDWHSTAGING"."STFACT_WORK_ORDERS"."REFERENCE_NUMBER" (actual: 31, maximum: 30)
Sun, 5-01-2020	ORA-12899: value too large for column "ABSDWHSTAGING"."STFACT_WORK_ORDERS"."REFERENCE_NUMBER" (actual: 31, maximum: 30)
Wed, 8-01-2020	ORA-12899: value too large for column "ABSDWHSTAGING"."STFACT_WORK_ORDERS"."REFERENCE_NUMBER" (actual: 31, maximum: 30)
Thu, 9-01-2020	ORA-12899: value too large for column "ABSDWHSTAGING"."STFACT_WORK_ORDERS"."REFERENCE_NUMBER" (actual: 31, maximum: 30)
Sat, 11-01-2020	ORA-12899: value too large for column "ABSDWHSTAGING"."STFACT_WORK_ORDERS"."REFERENCE_NUMBER" (actual: 31, maximum: 30)

Weekly SLA Customer Report

Customer VEN_Production
Database ID 35



Standby Database Health VEN_Production

Recovery lag for last 7 days

