

# Weekly SLA Customer Report

Customer CUS Production  
 Database ID 84



Harddisk Usage CUS\_ABSBI

	Free disk space on c: (%)	Total disk space on c: (Gb)	Free disk space on d: (%)	Total disk space on d: (Gb)
11-Jan-20	77	199	68	800
10-Jan-20	77	199	68	800
09-Jan-20	77	199	68	800
08-Jan-20	77	199	68	800
07-Jan-20	77	199	68	800
06-Jan-20	77	199	68	800
05-Jan-20	77	199	68	800

Harddisk Usage CUS\_ABSPROD1

	Free disk space on c: (%)	Total disk space on c: (Gb)
11-Jan-20	46	199
10-Jan-20	46	199
09-Jan-20	46	199
08-Jan-20	46	199
07-Jan-20	46	199
06-Jan-20	46	199
05-Jan-20	46	199

# Weekly SLA Customer Report

Customer CUS Production  
Database ID 84



## Harddisk Usage CUS\_ABSPROD2

	Free disk space on c: (%)	Total disk space on c: (Gb)
11-Jan-20	15	199
10-Jan-20	15	199
09-Jan-20	16	199
08-Jan-20	16	199
07-Jan-20	16	199
06-Jan-20	16	199
05-Jan-20	16	199

## Harddisk Usage CUS\_ABSWEBPROD

	Free disk space on c: (%)	Total disk space on c: (Gb)
11-Jan-20	82	199
10-Jan-20	82	199
09-Jan-20	82	199
08-Jan-20	82	199
07-Jan-20	82	199
06-Jan-20	82	199
05-Jan-20	82	199

# Weekly SLA Customer Report

Customer CUS Production  
Database ID 84



## Harddisk Usage CUS\_PrimaryDBSrv\_ABSDB1

	Free disk space on c: (%)	Total disk space on c: (Gb)	Free disk space on d: (%)	Total disk space on d: (Gb)
11-Jan-20	75	199	54	1,024
10-Jan-20	75	199	54	1,024
09-Jan-20	75	199	55	1,024
08-Jan-20	75	199	55	1,024
07-Jan-20	75	199	55	1,024
06-Jan-20	75	199	56	1,024
05-Jan-20	75	199	56	1,024

## Harddisk Usage CUS\_StandByDBSrv\_ABSDB2

	Free disk space on c: (%)	Total disk space on c: (Gb)	Free disk space on d: (%)	Total disk space on d: (Gb)
11-Jan-20	83	199	63	1,024
10-Jan-20	83	199	64	1,024
09-Jan-20	83	199	65	1,024
08-Jan-20	83	199	65	1,024
07-Jan-20	83	199	66	1,024
06-Jan-20	83	199	67	1,024
05-Jan-20	83	199	67	1,024

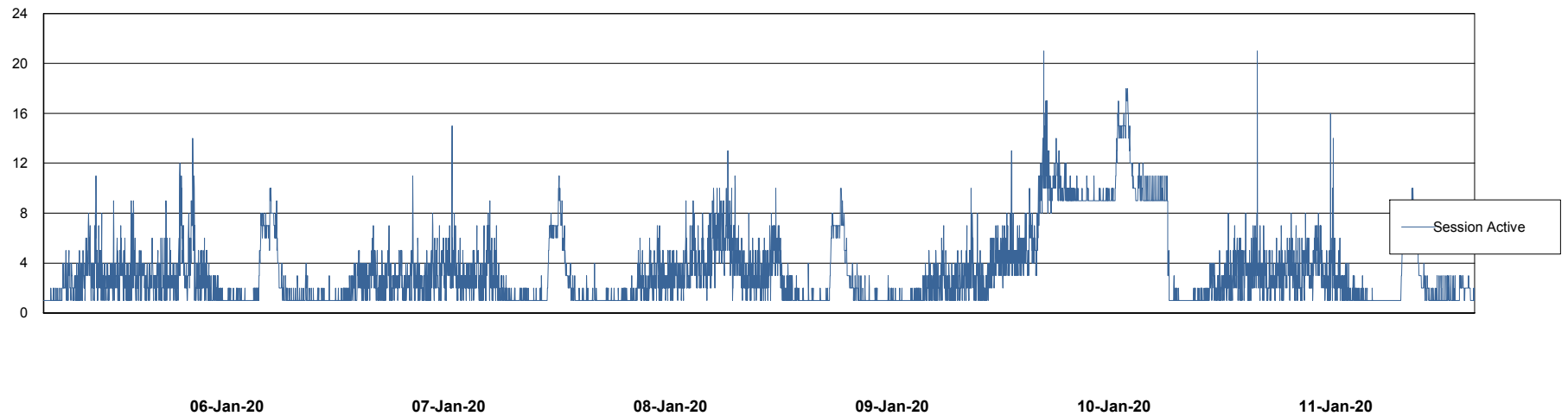
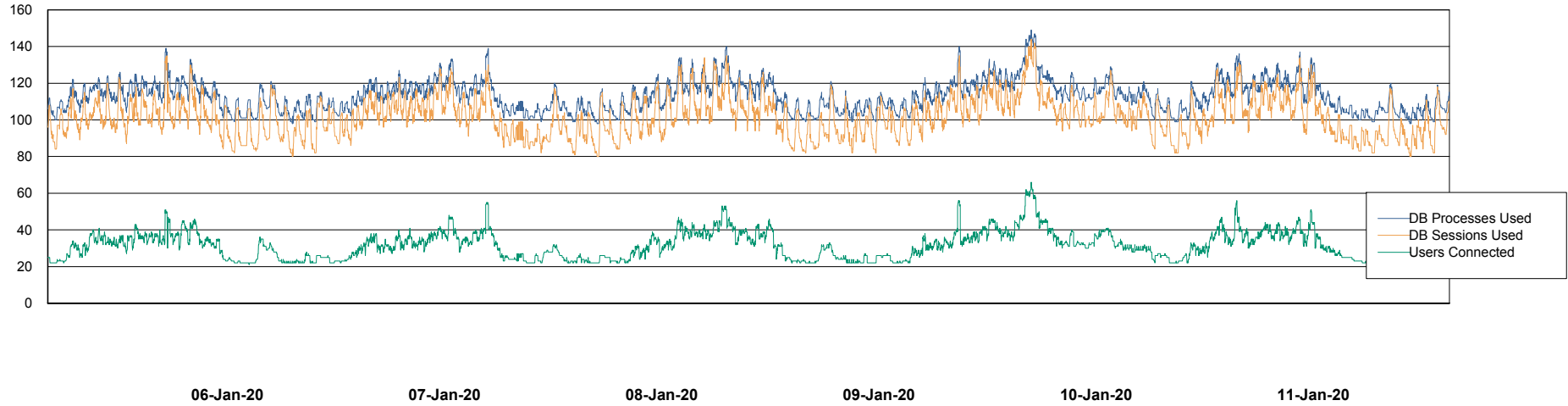
# Weekly SLA Customer Report

Customer CUS Production  
Database ID 84



## Database Performance CUS\_ProdDB\_Primary

DB Processes Max 300  
DB Sessions Max 472



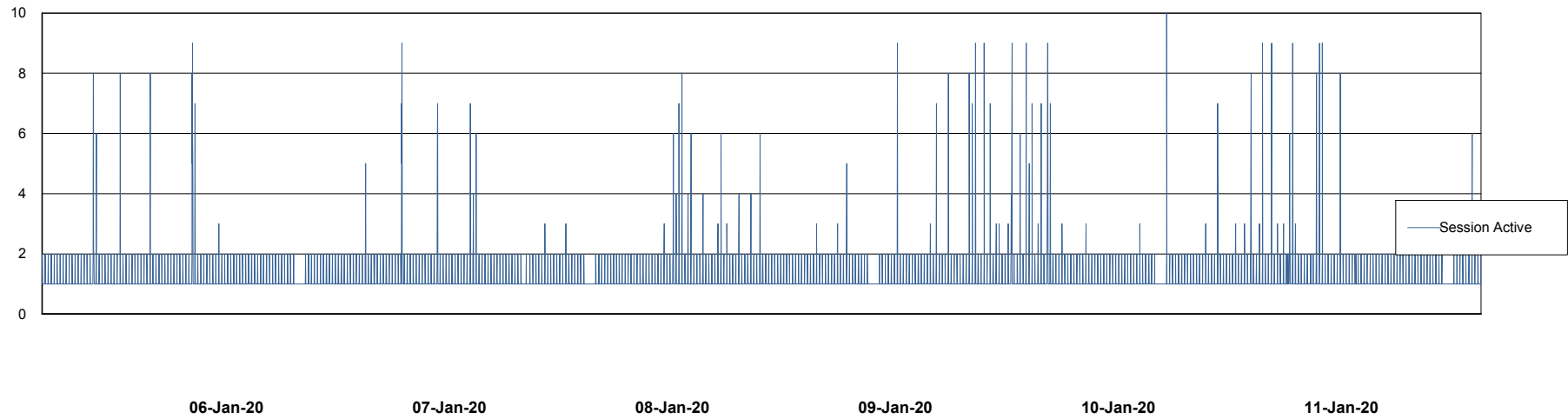
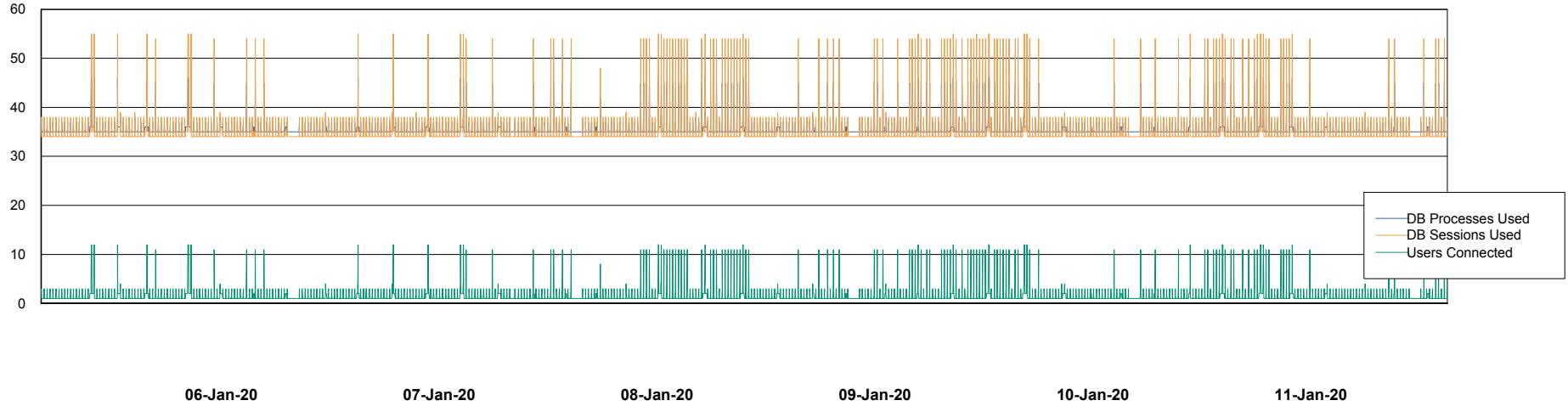
# Weekly SLA Customer Report

Customer CUS Production  
Database ID 84



## Database Performance CUS\_ProdDB\_Standby

DB Processes Max 300  
DB Sessions Max 472



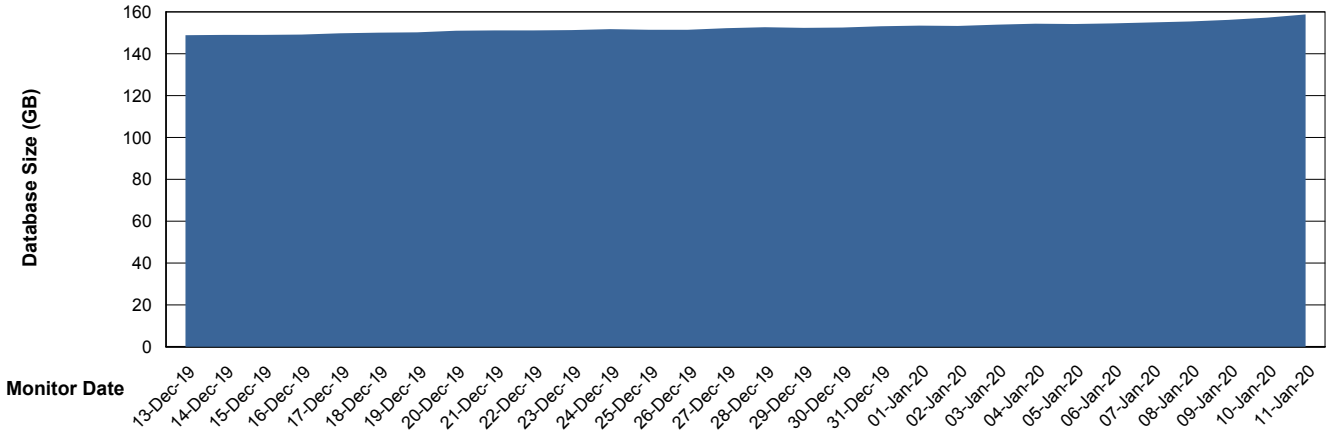
# Weekly SLA Customer Report

Customer CUS Production  
 Database ID 84



DATABASE SIZE CUS\_ProdDB\_Primary

Database growth over last month



Database Tablespace CUS\_ProdDB\_Primary

Date	Tablespace Name	Filesize (Gb)	Usedsize (Gb)	Percentage free
11-Jan-20	ABSDATA	129	67	48
	INDX	102	84	18
10-Jan-20	ABSDATA	129	67	48
	INDX	102	84	18
09-Jan-20	ABSDATA	129	67	48
	INDX	102	84	18
08-Jan-20	ABSDATA	129	65	50
	INDX	102	84	18
07-Jan-20	ABSDATA	129	65	50
	INDX	102	84	18
06-Jan-20	ABSDATA	129	65	50
	INDX	102	83	19
05-Jan-20	ABSDATA	129	64	50
	INDX	96	83	14

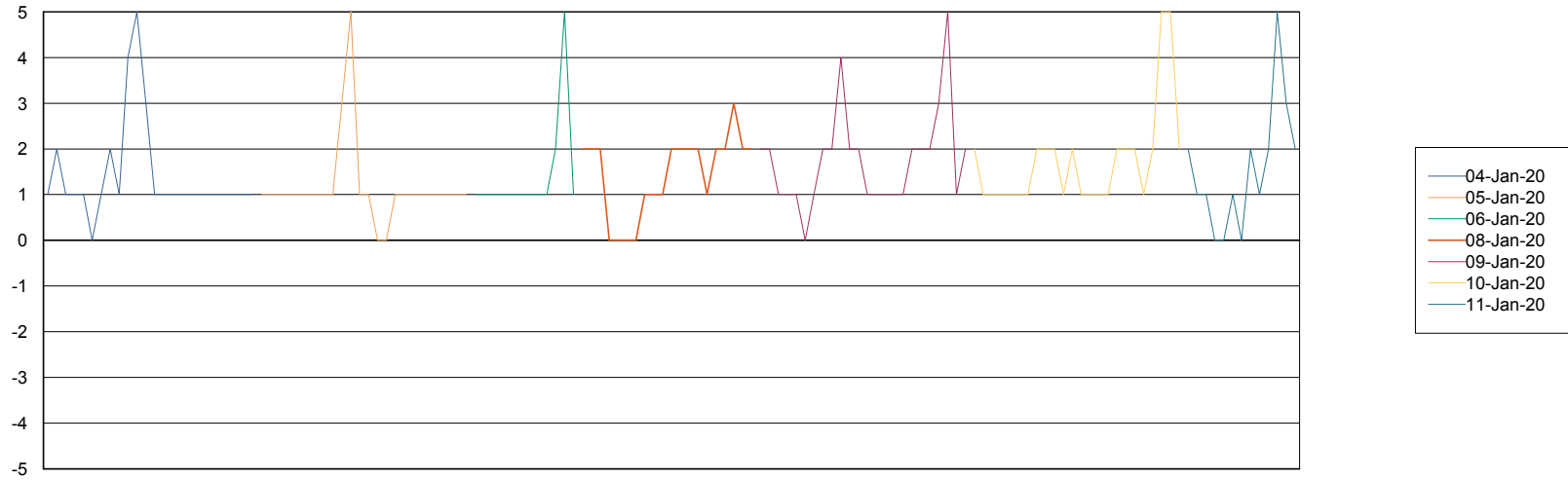
# Weekly SLA Customer Report

Customer CUS Production  
Database ID 84



Standby Database Health CUS Production

### Recovery lag for last 7 days



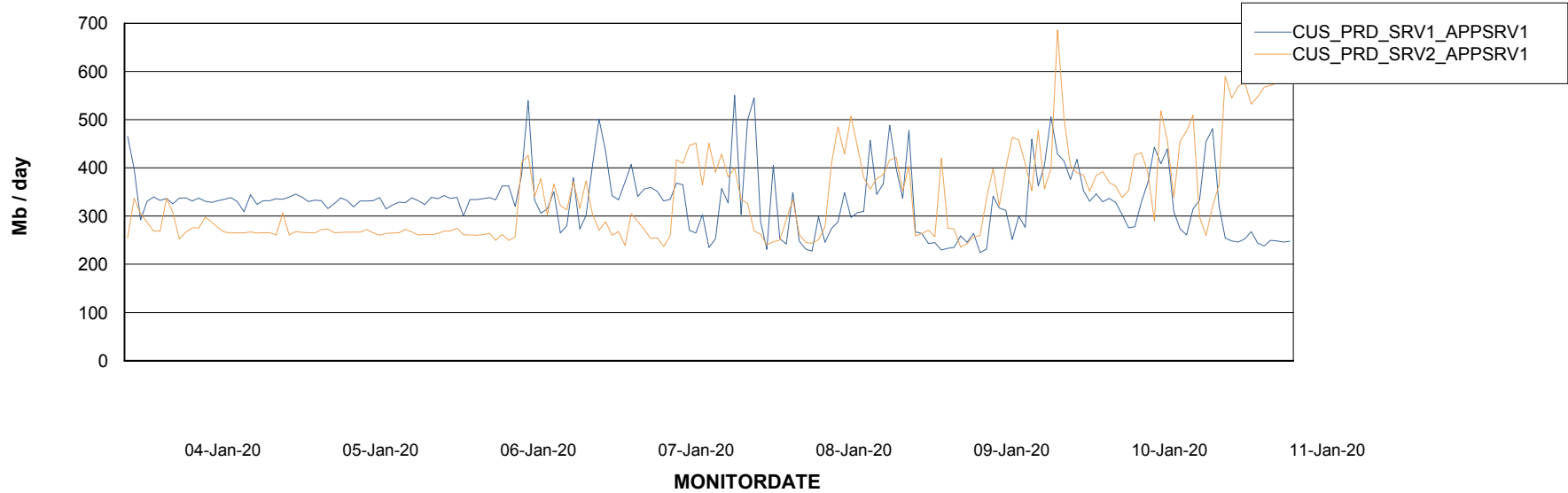
# Weekly SLA Customer Report

Customer CUS Production  
Database ID 84

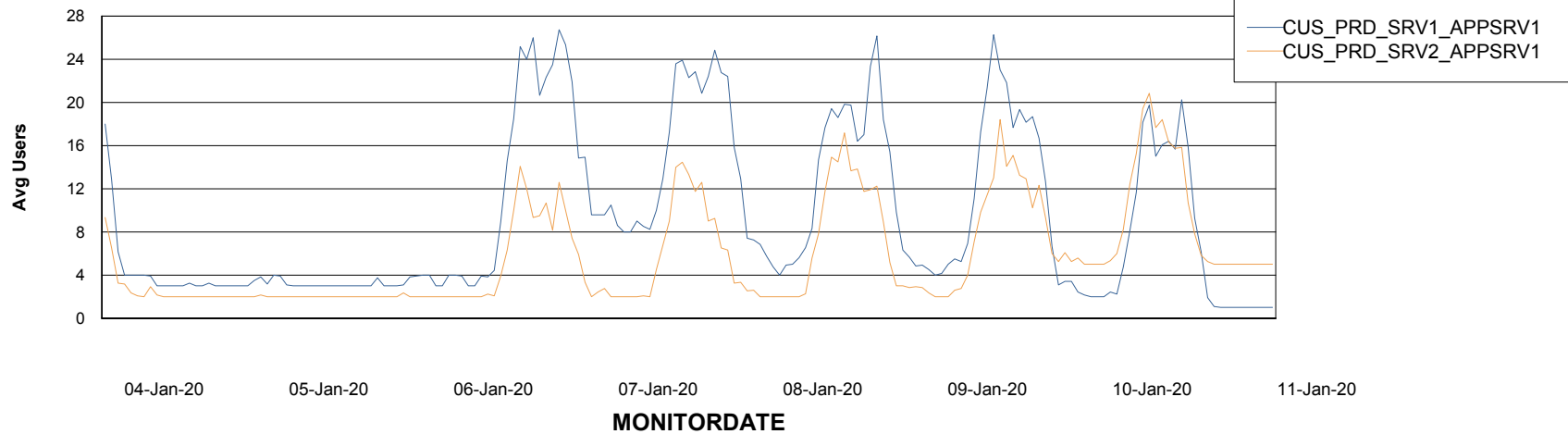


## ABSSolute Application Server Services

### Avg memory used per ABS Server Service



### Avg users per day per ABS server



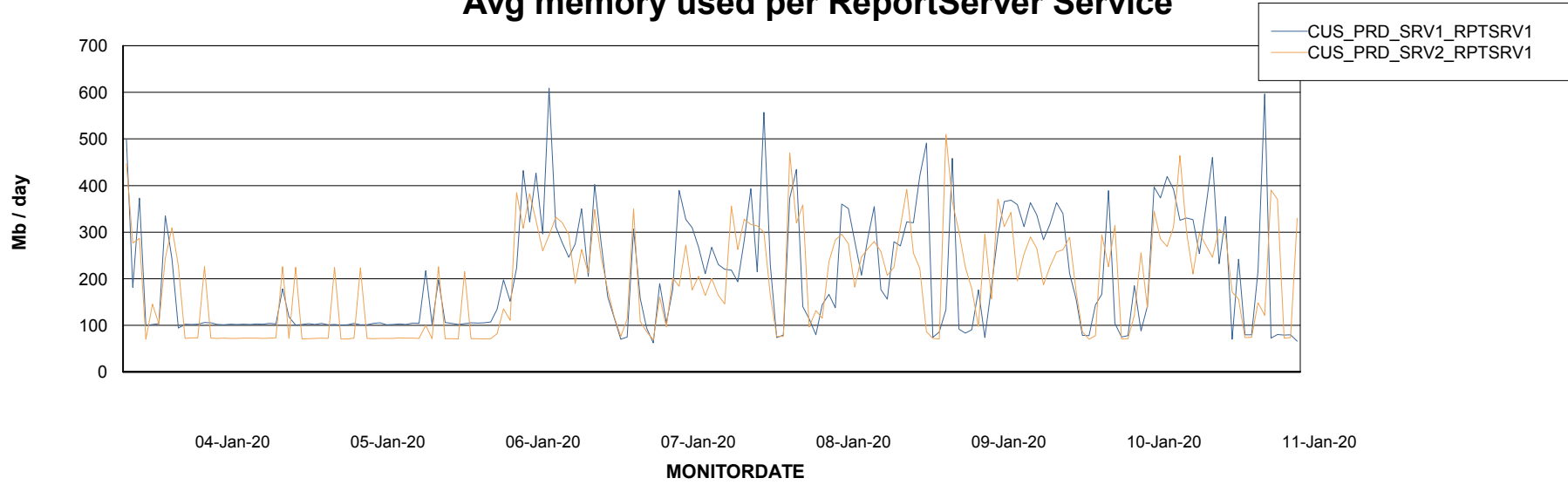
# Weekly SLA Customer Report

Customer CUS Production  
Database ID 84



## ABSSolute Web Component Services

### Avg memory used per ReportServer Service



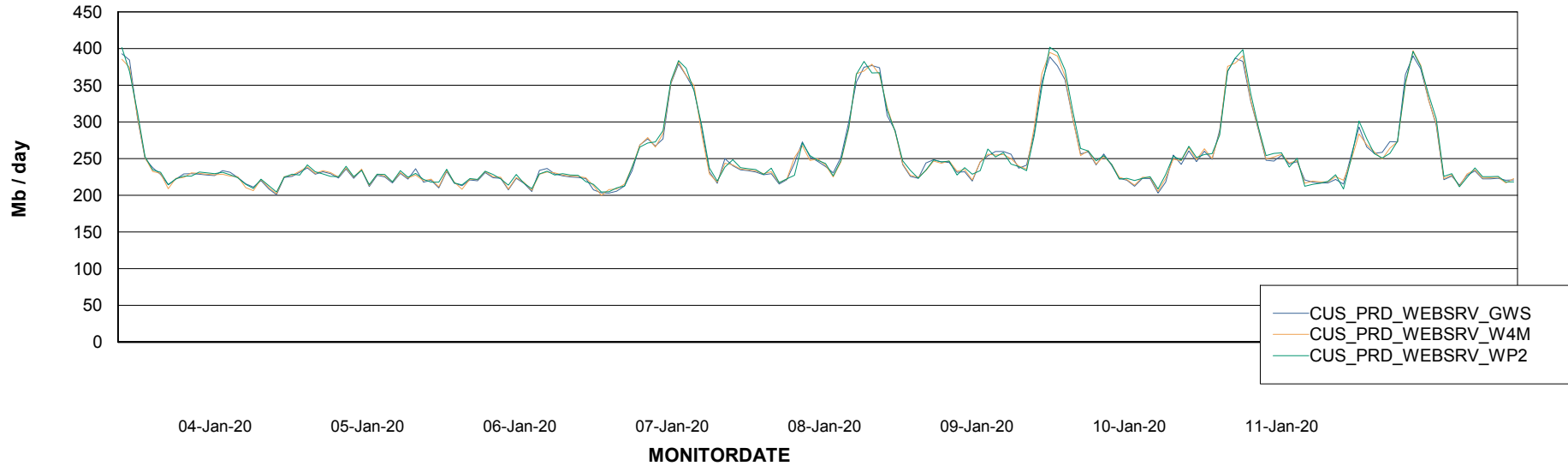
# Weekly SLA Customer Report

Customer CUS Production  
Database ID 84



## ABSSolute Web Component Services

### Avg memory used per ABS Web component



# Weekly SLA Customer Report

Customer CUS Production  
Database ID 84



### Disaster per ABS component

