

Weekly SLA Customer Report

Customer CUS Production
Database ID 84



Harddisk Usage CUS_ABSBI

	Free disk space on c: (%)	Total disk space on c: (Gb)	Free disk space on d: (%)	Total disk space on d: (Gb)
05-Oct-19	78	199	69	800
04-Oct-19	78	199	69	800
03-Oct-19	79	199	69	800
02-Oct-19	79	199	69	800
01-Oct-19	79	199	69	800
30-Sep-19	79	199	69	800
29-Sep-19	79	199	69	800

Harddisk Usage CUS_ABSPROD1

	Free disk space on c: (%)	Total disk space on c: (Gb)
05-Oct-19	27	199
04-Oct-19	27	199
03-Oct-19	28	199
02-Oct-19	31	199
01-Oct-19	31	199
30-Sep-19	32	199
29-Sep-19	32	199

Weekly SLA Customer Report

Customer CUS Production
Database ID 84



Harddisk Usage CUS_ABSPROD2

	Free disk space on c: (%)	Total disk space on c: (Gb)
05-Oct-19	29	199
04-Oct-19	30	199
03-Oct-19	30	199
02-Oct-19	30	199
01-Oct-19	30	199
30-Sep-19	30	199
29-Sep-19	30	199

Harddisk Usage CUS_ABSWEBPROD

	Free disk space on c: (%)	Total disk space on c: (Gb)
05-Oct-19	84	199
04-Oct-19	84	199
03-Oct-19	84	199
02-Oct-19	84	199
01-Oct-19	84	199
30-Sep-19	85	199
29-Sep-19	85	199

Weekly SLA Customer Report

Customer CUS Production
Database ID 84



Harddisk Usage CUS_PrimaryDBSrv_ABSDB1

	Free disk space on c: (%)	Total disk space on c: (Gb)	Free disk space on d: (%)	Total disk space on d: (Gb)
05-Oct-19	80	199	60	1,024
04-Oct-19	80	199	60	1,024
03-Oct-19	80	199	60	1,024
02-Oct-19	80	199	60	1,024
01-Oct-19	80	199	60	1,024
30-Sep-19	80	199	61	1,024
29-Sep-19	80	199	61	1,024

Harddisk Usage CUS_StandByDBSrv_ABSDB2

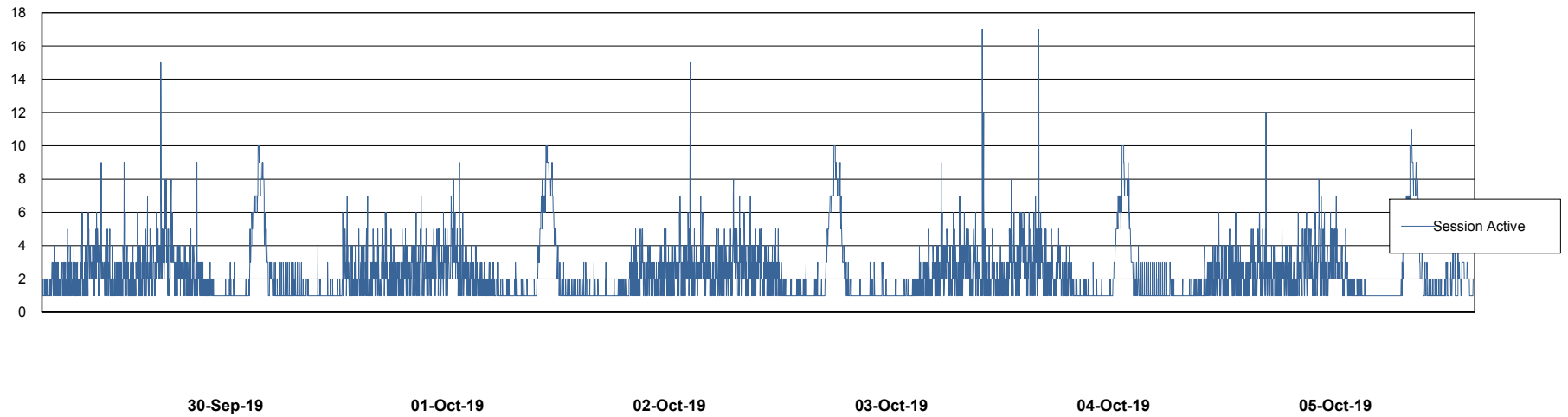
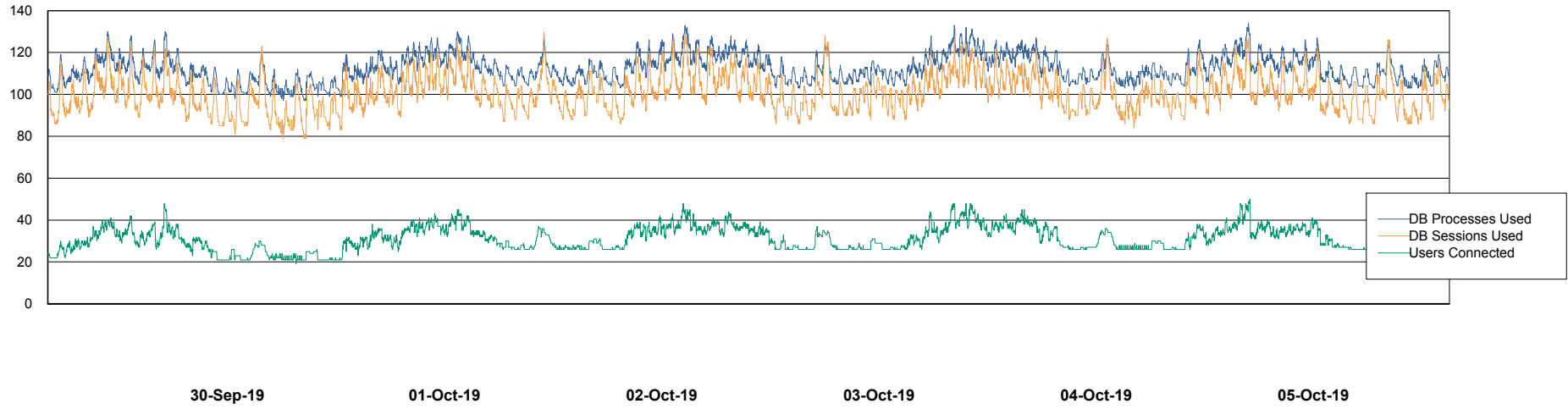
	Free disk space on c: (%)	Total disk space on c: (Gb)	Free disk space on d: (%)	Total disk space on d: (Gb)
05-Oct-19	85	199	64	1,024
04-Oct-19	85	199	64	1,024
03-Oct-19	85	199	64	1,024
02-Oct-19	85	199	64	1,024
01-Oct-19	85	199	64	1,024
30-Sep-19	85	199	65	1,024
29-Sep-19	85	199	65	1,024

Weekly SLA Customer Report

Customer CUS Production
Database ID 84



Database Performance CUS_ProdDB_Primary

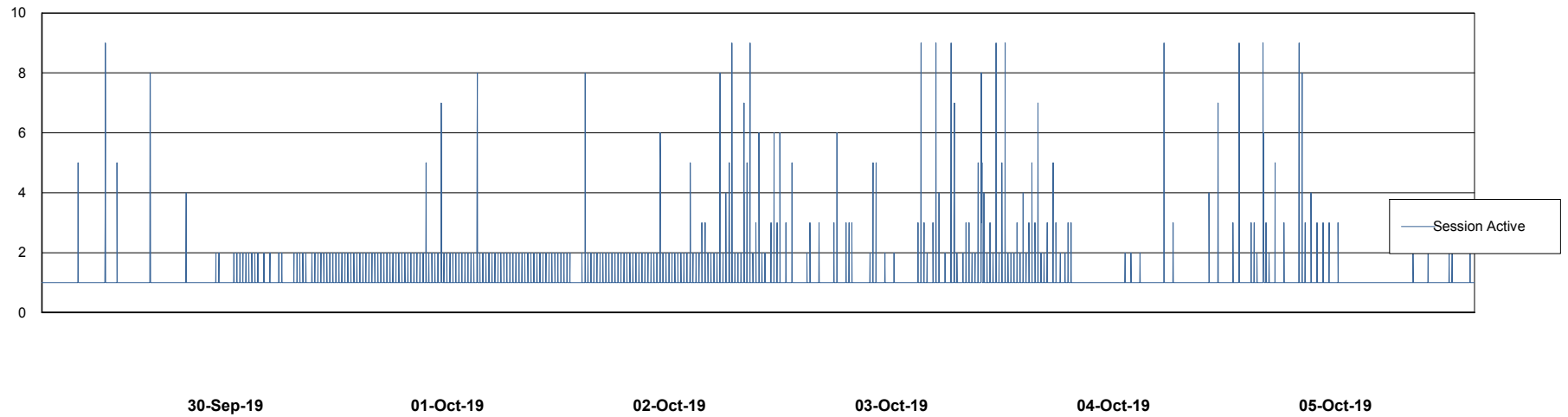
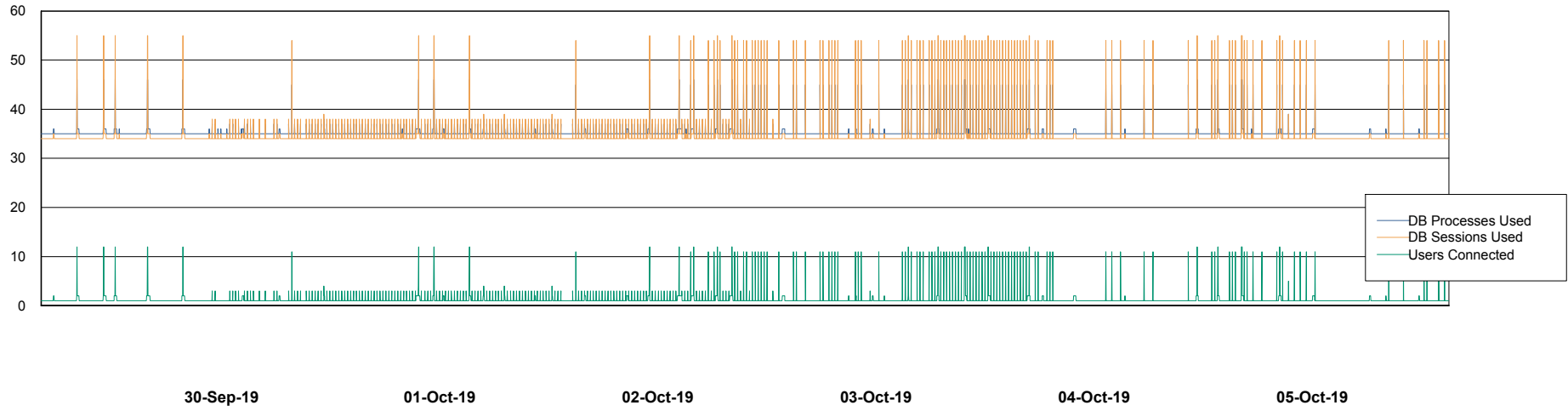


Weekly SLA Customer Report

Customer CUS Production
Database ID 84



Database Performance CUS_ProdDB_Standby



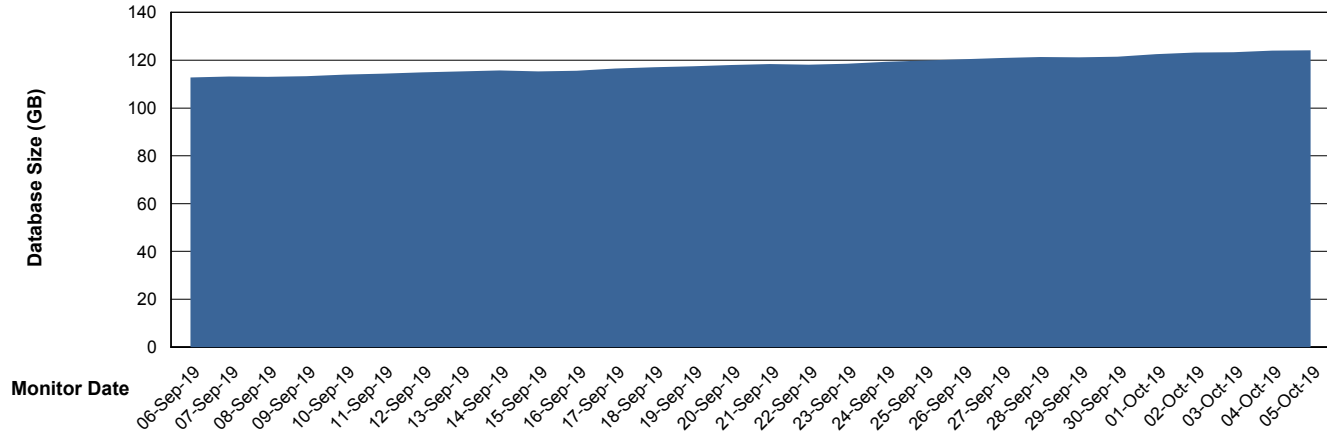
Weekly SLA Customer Report

Customer CUS Production
 Database ID 84



DATABASE SIZE CUS_ProdDB_Primary

Database growth over last month



Database Tablespace CUS_ProdDB_Primary

Date	Tablespace Name	Filesize (Gb)	Usedsize (Gb)	Percentage free
05-Oct-19	ABSDATA	129	55	57
	INDX	96	60	38
04-Oct-19	ABSDATA	129	55	57
	INDX	96	60	38
03-Oct-19	ABSDATA	129	55	57
	INDX	96	60	38
02-Oct-19	ABSDATA	129	55	57
	INDX	96	60	38
01-Oct-19	ABSDATA	129	54	58
	INDX	96	60	38
30-Sep-19	ABSDATA	129	53	59
	INDX	96	60	38
29-Sep-19	ABSDATA	129	53	59
	INDX	96	60	38

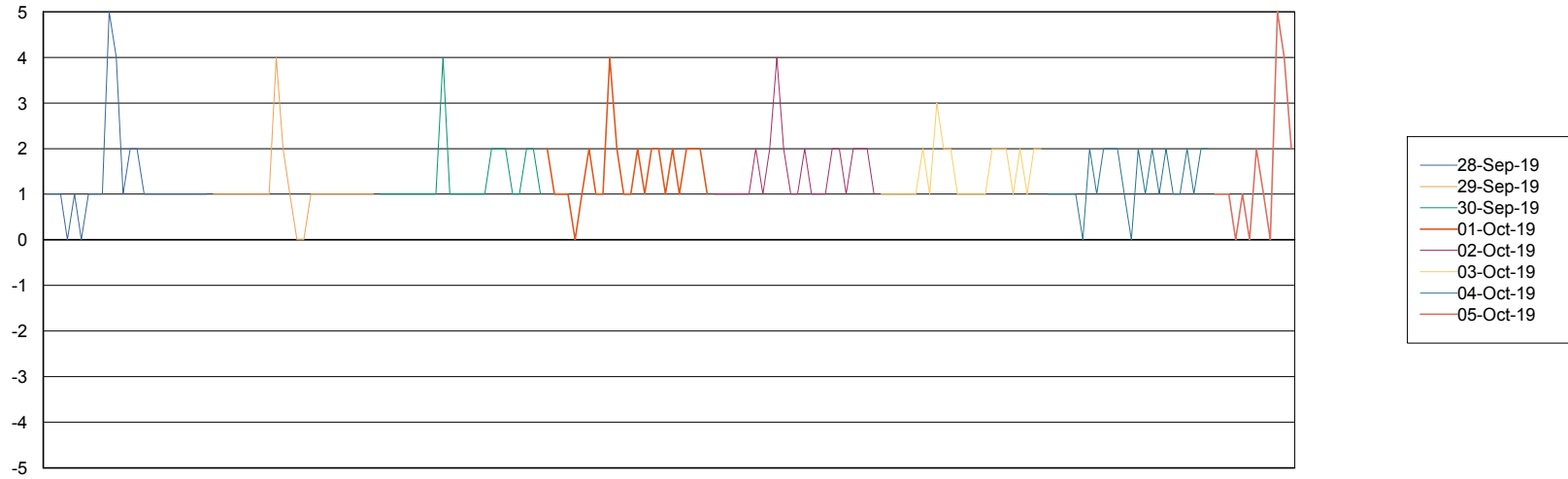
Weekly SLA Customer Report

Customer CUS Production
Database ID 84



Standby Database Health CUS Production

Recovery lag for last 7 days



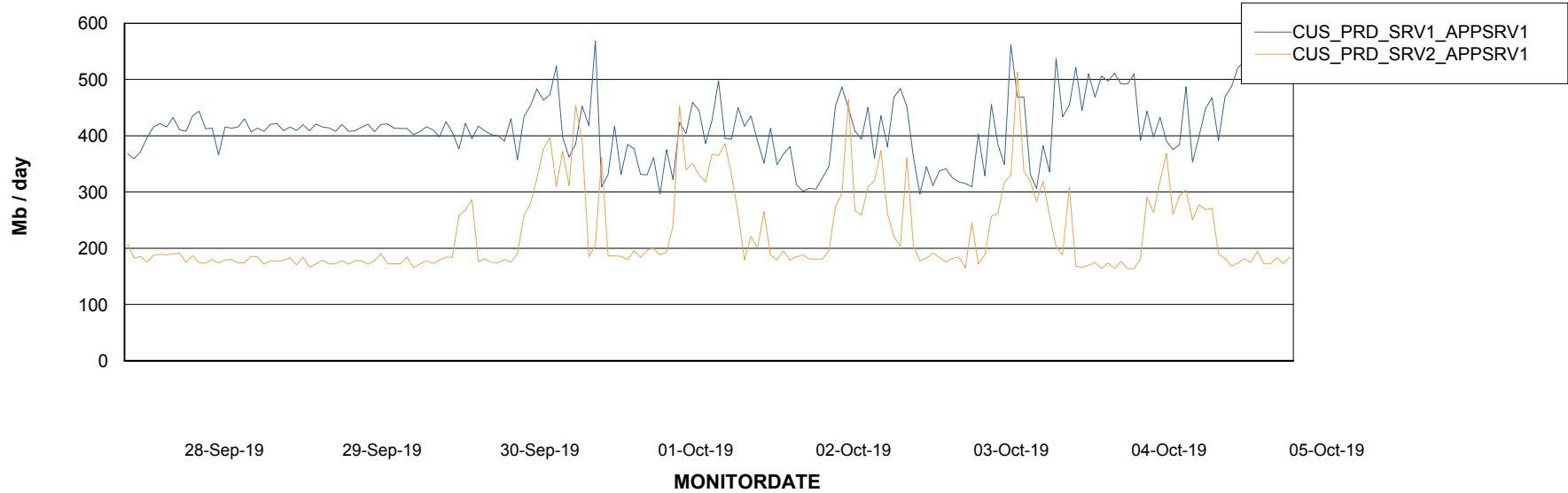
Weekly SLA Customer Report

Customer CUS Production
Database ID 84

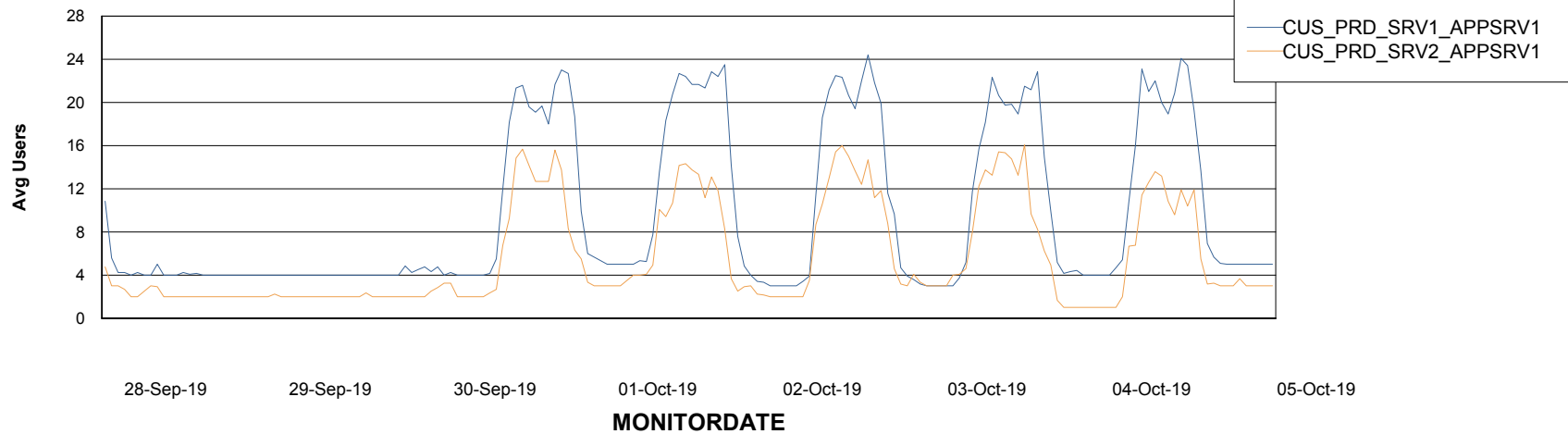


ABSSolute Application Server Services

Avg memory used per ABS Server Service



Avg users per day per ABS server



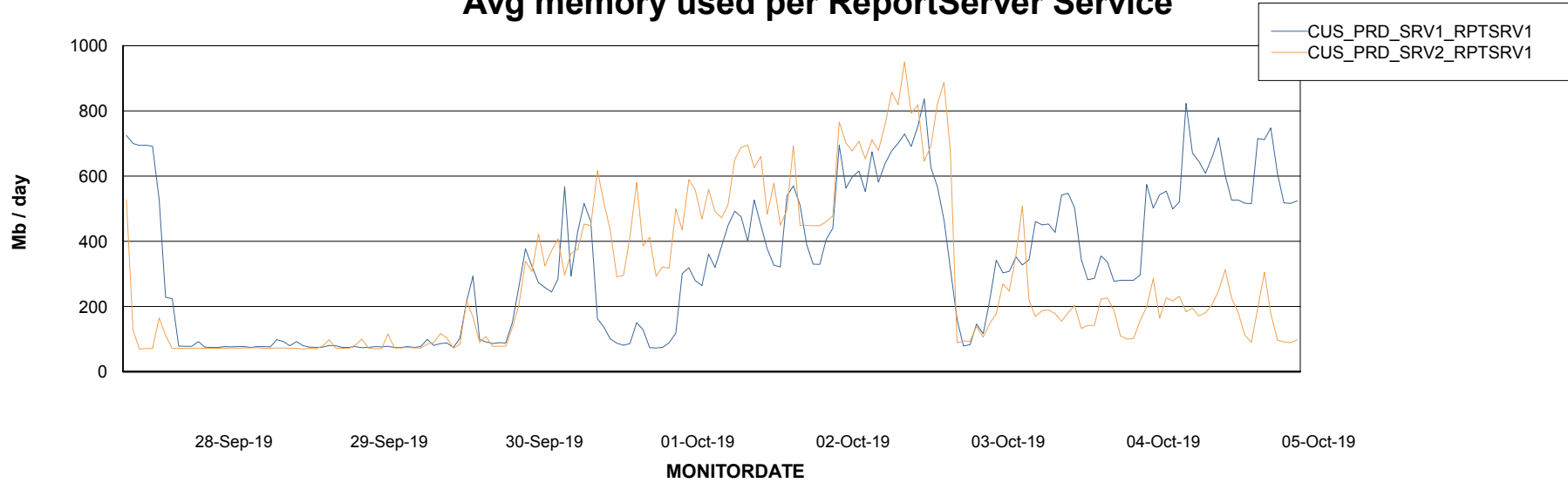
Weekly SLA Customer Report

Customer CUS Production
Database ID 84



ABSSolute Web Component Services

Avg memory used per ReportServer Service



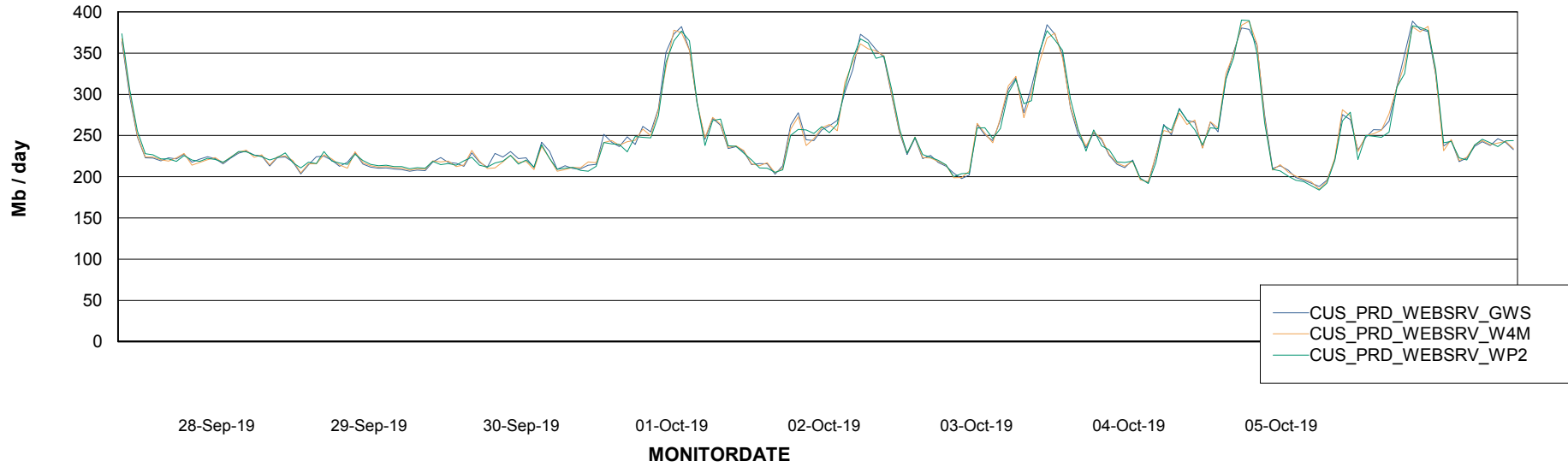
Weekly SLA Customer Report

Customer CUS Production
Database ID 84



ABSSolute Web Component Services

Avg memory used per ABS Web component



Weekly SLA Customer Report

Customer CUS Production
Database ID 84



Disaster per ABS component

