

Weekly SLA Customer Report

Customer NIX_Production
Database ID 51



Harddisk Usage NIX_PRD_ABSAPP01

| | Free disk space on c: (%) | Total disk space on c: (Gb) | Free disk space on e: (%) | Total disk space on e: (Gb) |
|-----------|---------------------------|-----------------------------|---------------------------|-----------------------------|
| 28-Sep-19 | 82 | 207 | 100 | 98 |
| 27-Sep-19 | 82 | 207 | 100 | 98 |
| 26-Sep-19 | 82 | 207 | 100 | 98 |
| 25-Sep-19 | 82 | 207 | 100 | 98 |
| 24-Sep-19 | 82 | 207 | 100 | 98 |
| 23-Sep-19 | 82 | 207 | 100 | 98 |
| 22-Sep-19 | 82 | 207 | 100 | 98 |

Harddisk Usage NIX_PRD_ABSAPP03

| | Free disk space on c: (%) | Total disk space on c: (Gb) |
|-----------|---------------------------|-----------------------------|
| 28-Sep-19 | 42 | 300 |
| 27-Sep-19 | 42 | 300 |
| 26-Sep-19 | 43 | 300 |
| 25-Sep-19 | 43 | 300 |
| 24-Sep-19 | 44 | 300 |
| 23-Sep-19 | 46 | 300 |
| 22-Sep-19 | 47 | 300 |

Weekly SLA Customer Report

Customer NIX_Production
Database ID 51



Harddisk Usage NIX_PRD_ABSWEB02

| | Free disk space on c: (%) | Total disk space on c: (Gb) | Free disk space on d: (%) | Total disk space on d: (Gb) |
|-----------|---------------------------|-----------------------------|---------------------------|-----------------------------|
| 28-Sep-19 | 92 | 300 | 0 | 6 |
| 27-Sep-19 | 92 | 300 | 0 | 6 |
| 26-Sep-19 | 92 | 300 | 0 | 6 |
| 25-Sep-19 | 92 | 300 | 0 | 6 |
| 24-Sep-19 | 92 | 300 | 0 | 6 |
| 23-Sep-19 | 92 | 300 | 0 | 6 |
| 22-Sep-19 | 91 | 300 | 0 | 6 |

Harddisk Usage NIX_PRD_ORACLE_BI

| | Free disk space on c: (%) | Total disk space on c: (Gb) |
|-----------|---------------------------|-----------------------------|
| 28-Sep-19 | 48 | 836 |
| 27-Sep-19 | 48 | 836 |
| 26-Sep-19 | 49 | 836 |
| 25-Sep-19 | 50 | 836 |
| 24-Sep-19 | 50 | 836 |
| 23-Sep-19 | 49 | 836 |
| 22-Sep-19 | 50 | 836 |

Weekly SLA Customer Report

Customer NIX_Production
Database ID 51



Harddisk Usage NIX_PRD_ORCDB1

| | Free disk space on c: (%) | Total disk space on c: (Gb) | Free disk space on d: (%) | Total disk space on d: (Gb) | Free disk space on e: (%) | Total disk space on e: (Gb) | Free disk space on f: (%) | Total disk space on f: (Gb) |
|-----------|---------------------------|-----------------------------|---------------------------|-----------------------------|---------------------------|-----------------------------|---------------------------|-----------------------------|
| 28-Sep-19 | 38 | 554 | 74 | 586 | 73 | 605 | 56 | 293 |
| 27-Sep-19 | 38 | 554 | 74 | 586 | 73 | 605 | 56 | 293 |
| 26-Sep-19 | 38 | 554 | 74 | 586 | 73 | 605 | 58 | 293 |
| 25-Sep-19 | 38 | 554 | 74 | 586 | 73 | 605 | 59 | 293 |
| 24-Sep-19 | 38 | 554 | 74 | 586 | 73 | 605 | 60 | 293 |
| 23-Sep-19 | 38 | 554 | 74 | 586 | 73 | 605 | 62 | 293 |
| 22-Sep-19 | 38 | 554 | 74 | 586 | 73 | 605 | 59 | 293 |

Harddisk Usage NIX_PRD_ORCDB2

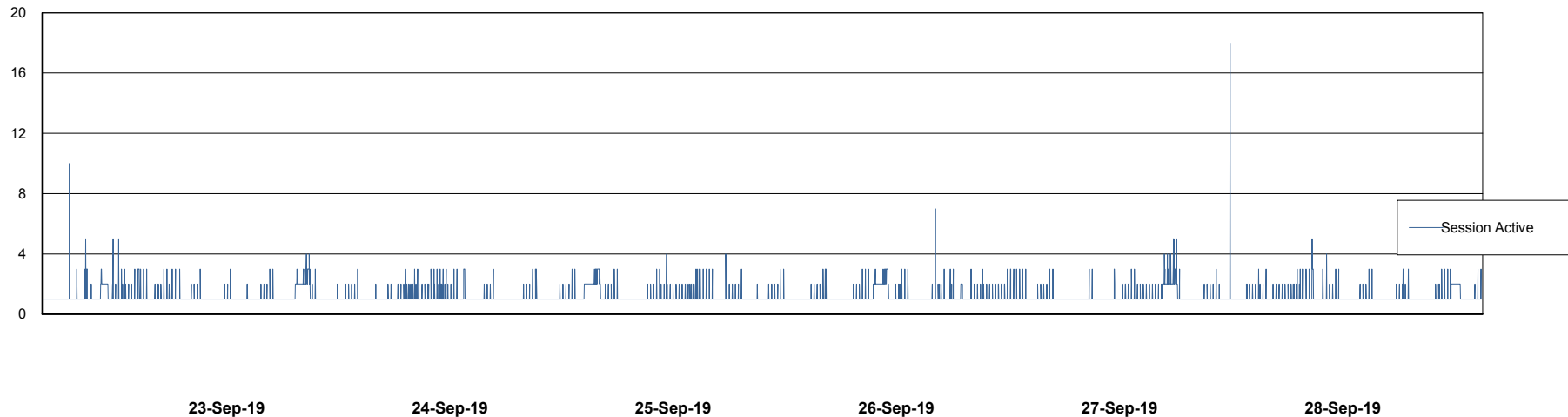
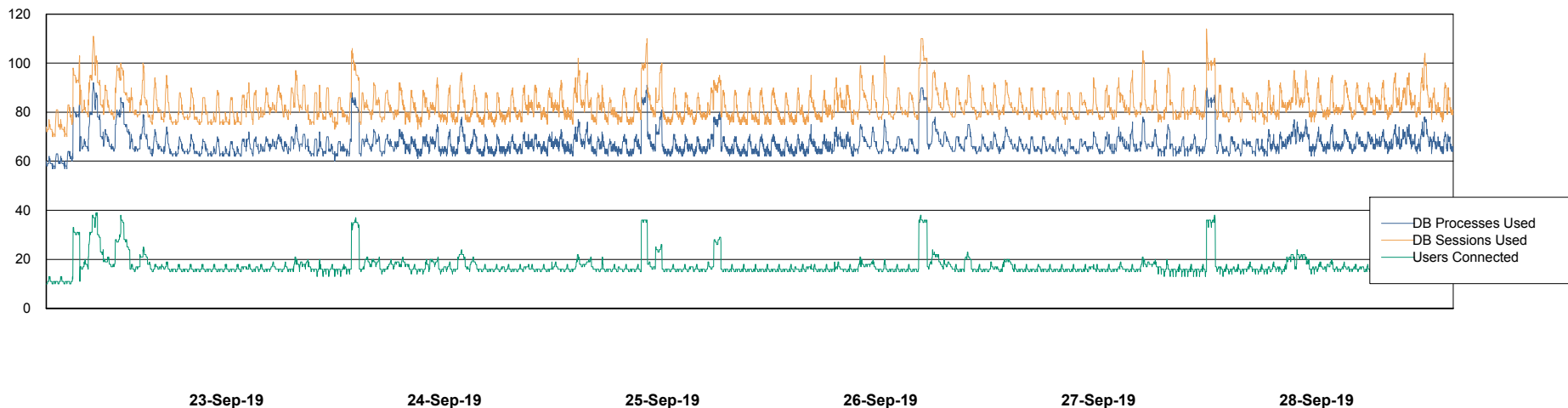
| | Free disk space on c: (%) | Total disk space on c: (Gb) | Total disk space on d: (Gb) | Free disk space on e: (%) | Total disk space on e: (Gb) | Free disk space on f: (%) | Total disk space on f: (Gb) |
|-----------|---------------------------|-----------------------------|-----------------------------|---------------------------|-----------------------------|---------------------------|-----------------------------|
| 28-Sep-19 | 92 | 574 | 488 | 77 | 684 | 87 | 488 |
| 27-Sep-19 | 92 | 574 | 488 | 77 | 684 | 87 | 488 |
| 26-Sep-19 | 92 | 574 | 488 | 77 | 684 | 88 | 488 |
| 25-Sep-19 | 92 | 574 | 488 | 77 | 684 | 89 | 488 |
| 24-Sep-19 | 92 | 574 | 488 | 77 | 684 | 90 | 488 |
| 23-Sep-19 | 92 | 574 | 488 | 77 | 684 | 90 | 488 |
| 22-Sep-19 | 92 | 574 | 488 | 77 | 684 | 89 | 488 |

Weekly SLA Customer Report

Customer NIX_Production
Database ID 51



Database Performance NIXDB_BI

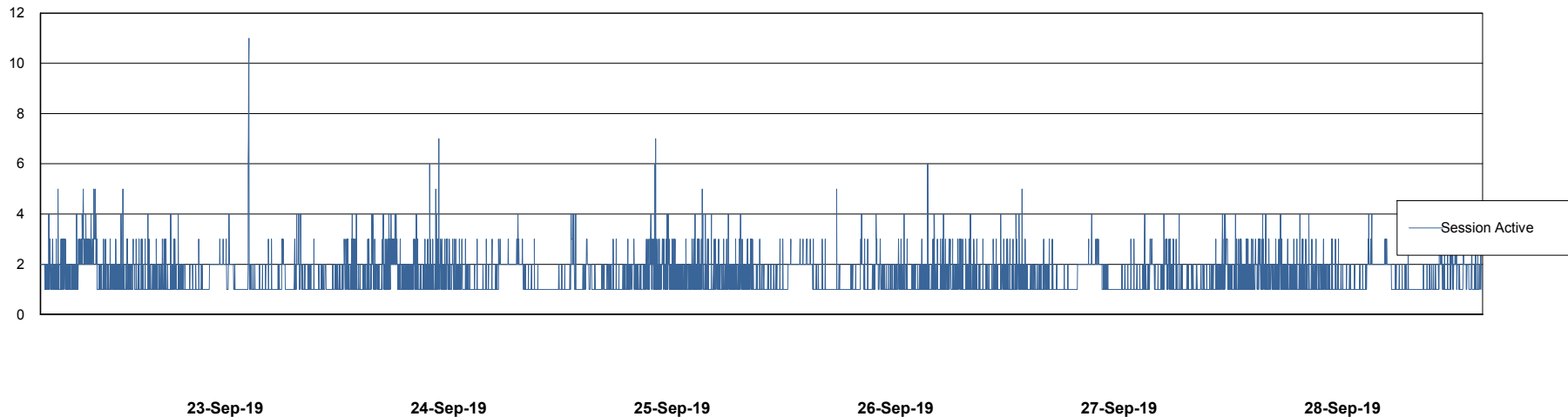
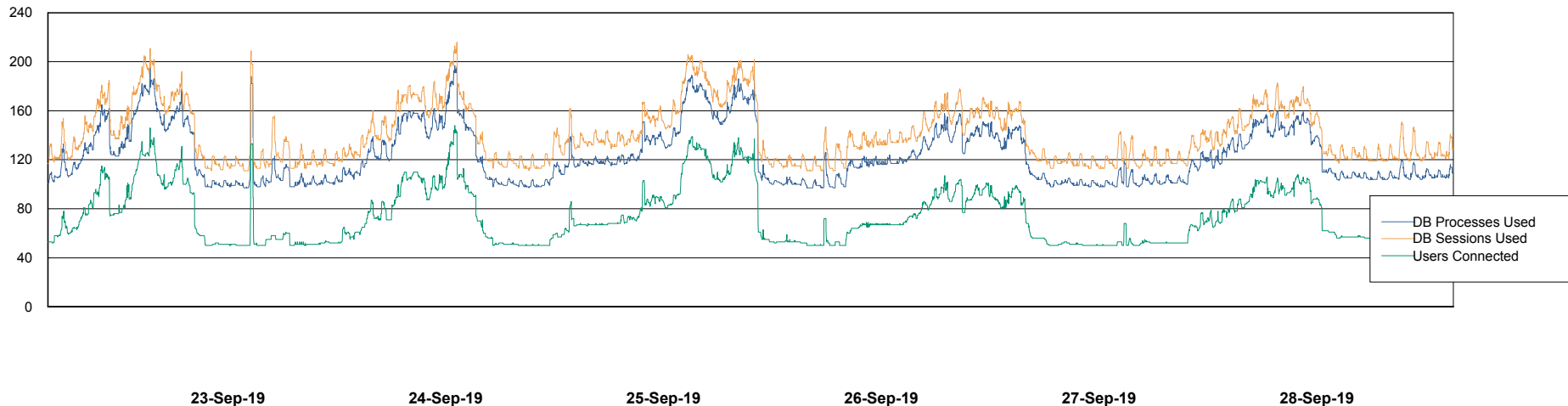


Weekly SLA Customer Report

Customer NIX_Production
Database ID 51



Database Performance NIXDB_Production

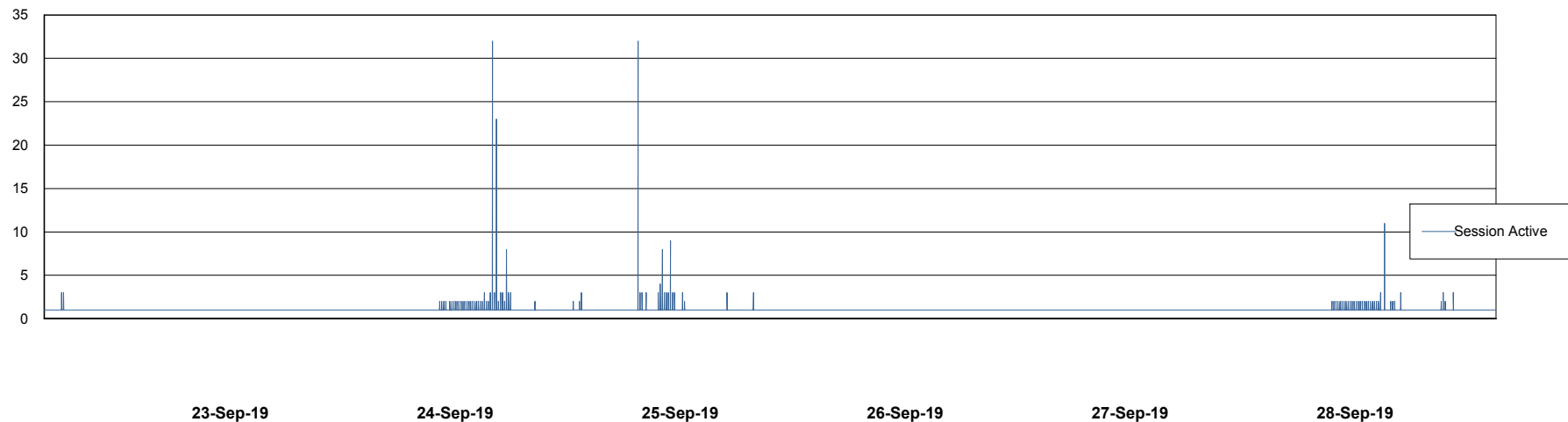
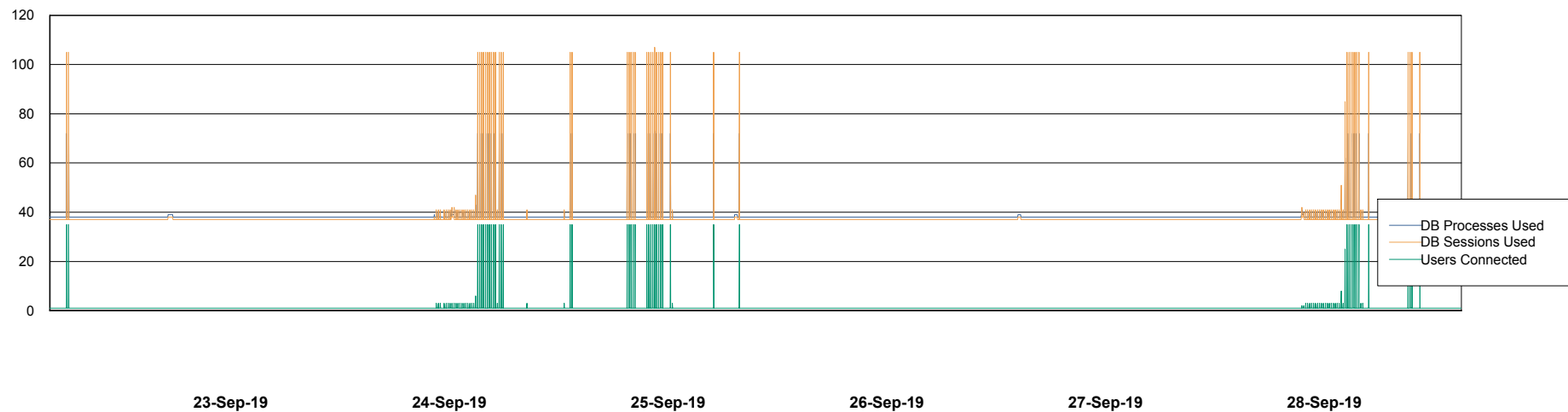


Weekly SLA Customer Report

Customer NIX_Production
Database ID 51



Database Performance NIXDB_Standby



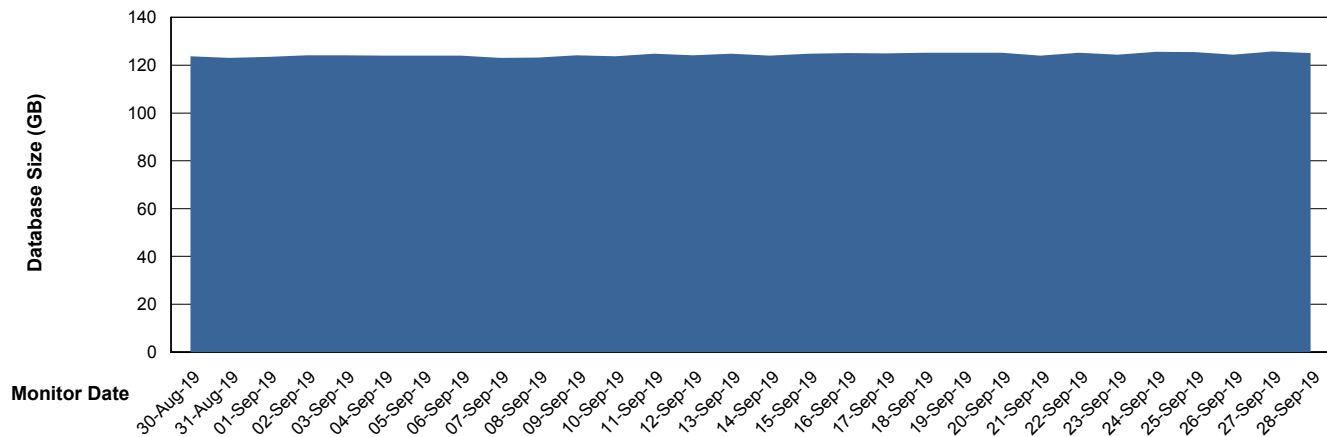
Weekly SLA Customer Report

Customer NIX_Production
Database ID 51



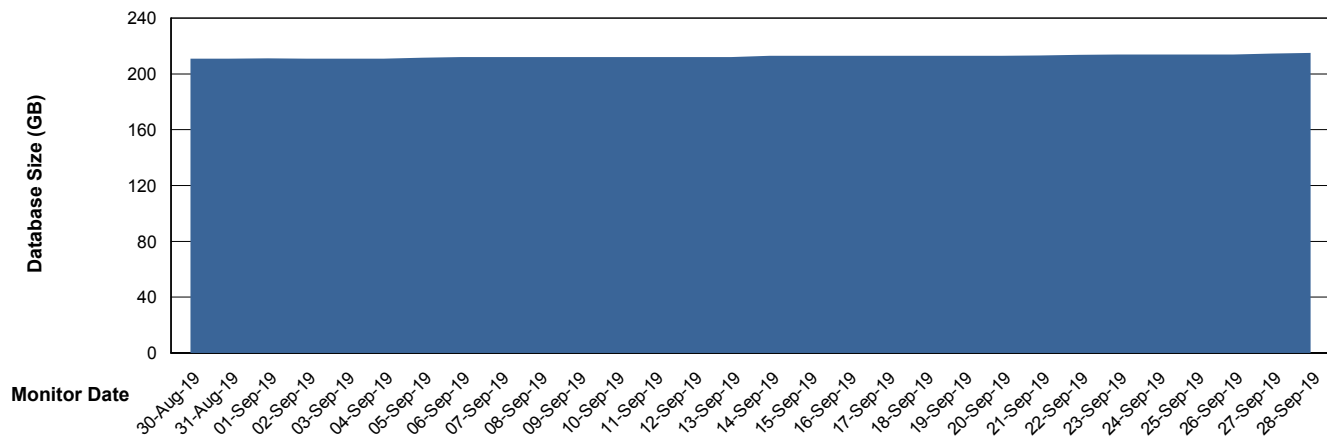
DATABASE SIZE NIXDB_BI

Database growth over last month



DATABASE SIZE NIXDB_Production

Database growth over last month



Weekly SLA Customer Report

Customer NIX_Production
Database ID 51



Database Tablespace NIXDB_BI

| Date | Tablespace Name | Filesize (Gb) | Usedsize (Gb) | Percentage free |
|-----------|-----------------|---------------|---------------|-----------------|
| 28-Sep-19 | ABSDATA | 76 | 61 | 20 |
| | INDX | 80 | 62 | 23 |
| 27-Sep-19 | ABSDATA | 76 | 60 | 21 |
| | INDX | 80 | 62 | 23 |
| 26-Sep-19 | ABSDATA | 76 | 60 | 21 |
| | INDX | 80 | 61 | 24 |
| 25-Sep-19 | ABSDATA | 72 | 60 | 17 |
| | INDX | 72 | 61 | 15 |
| 24-Sep-19 | ABSDATA | 72 | 60 | 17 |
| | INDX | 72 | 61 | 15 |
| 23-Sep-19 | ABSDATA | 72 | 60 | 17 |
| | INDX | 72 | 61 | 15 |
| 22-Sep-19 | ABSDATA | 72 | 60 | 17 |
| | INDX | 72 | 61 | 15 |

Weekly SLA Customer Report

Customer NIX_Production
 Database ID 51

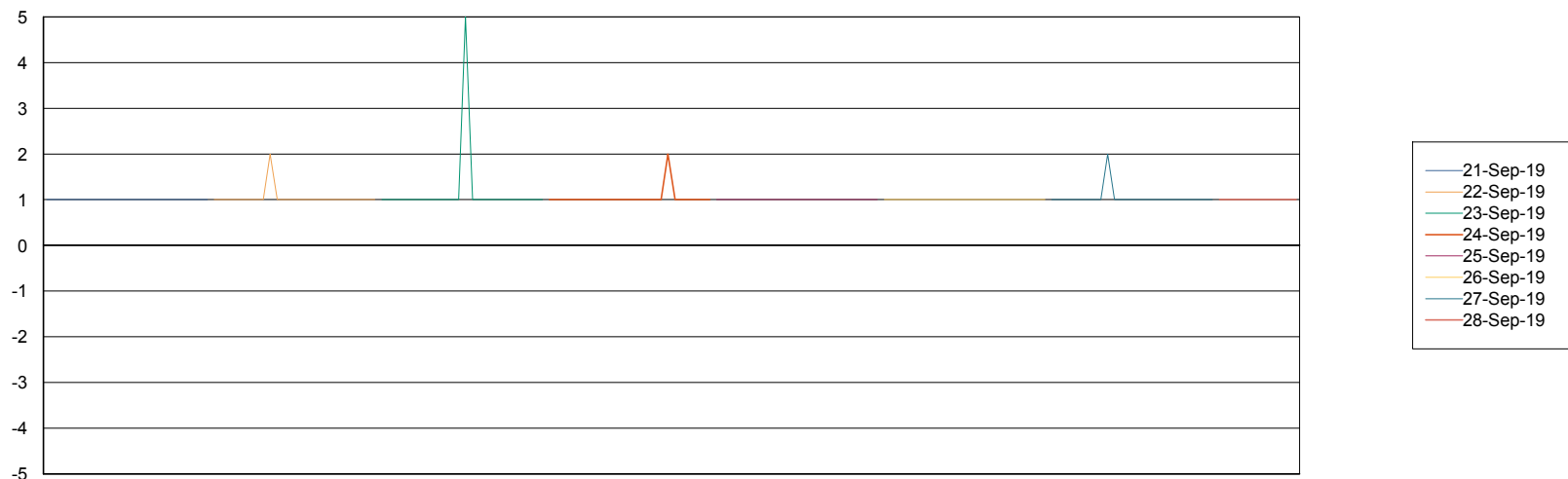


Database Tablespace NIXDB_Production

| Date | Tablespace Name | Filesize (Gb) | Usedsize (Gb) | Percentage free |
|-----------|-----------------|---------------|---------------|-----------------|
| 28-Sep-19 | ABSDATA | 98 | 75 | 23 |
| | INDX | 160 | 130 | 19 |
| 27-Sep-19 | ABSDATA | 98 | 75 | 23 |
| | INDX | 160 | 130 | 19 |
| 26-Sep-19 | ABSDATA | 98 | 75 | 23 |
| | INDX | 160 | 130 | 19 |
| 25-Sep-19 | ABSDATA | 98 | 75 | 23 |
| | INDX | 160 | 130 | 19 |
| 24-Sep-19 | ABSDATA | 98 | 75 | 23 |
| | INDX | 160 | 129 | 19 |
| 23-Sep-19 | ABSDATA | 98 | 74 | 24 |
| | INDX | 160 | 129 | 19 |
| 22-Sep-19 | ABSDATA | 98 | 74 | 24 |
| | INDX | 160 | 129 | 19 |

Standby Database Health NIX_Production

Recovery lag for last 7 days



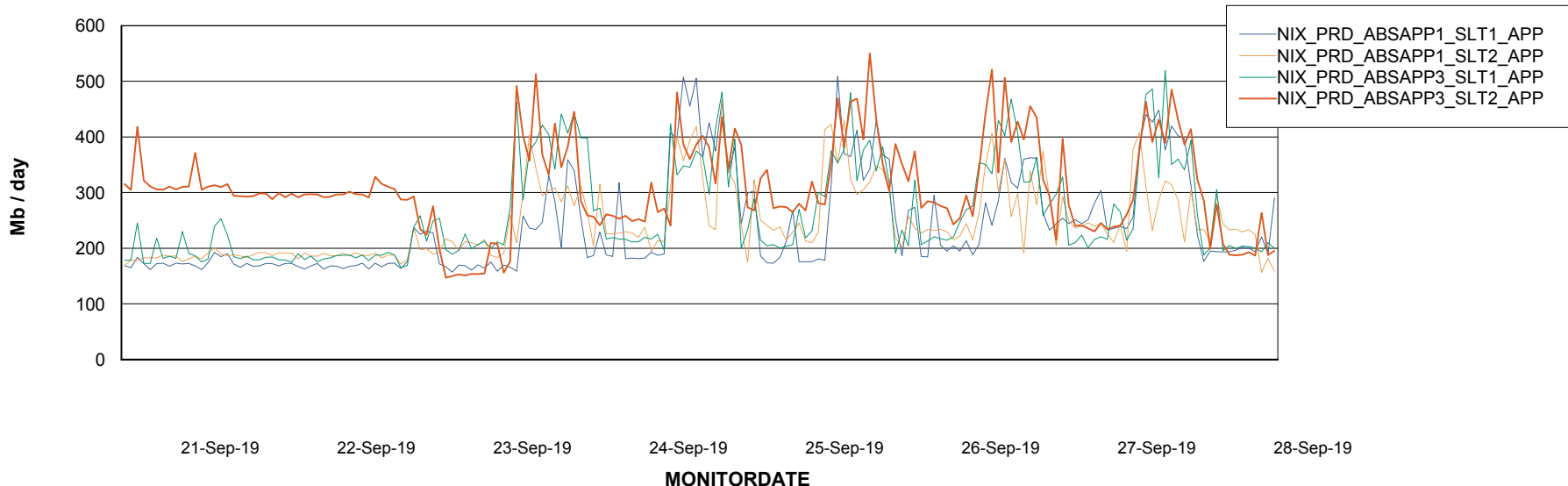
Weekly SLA Customer Report

Customer NIX_Production
Database ID 51

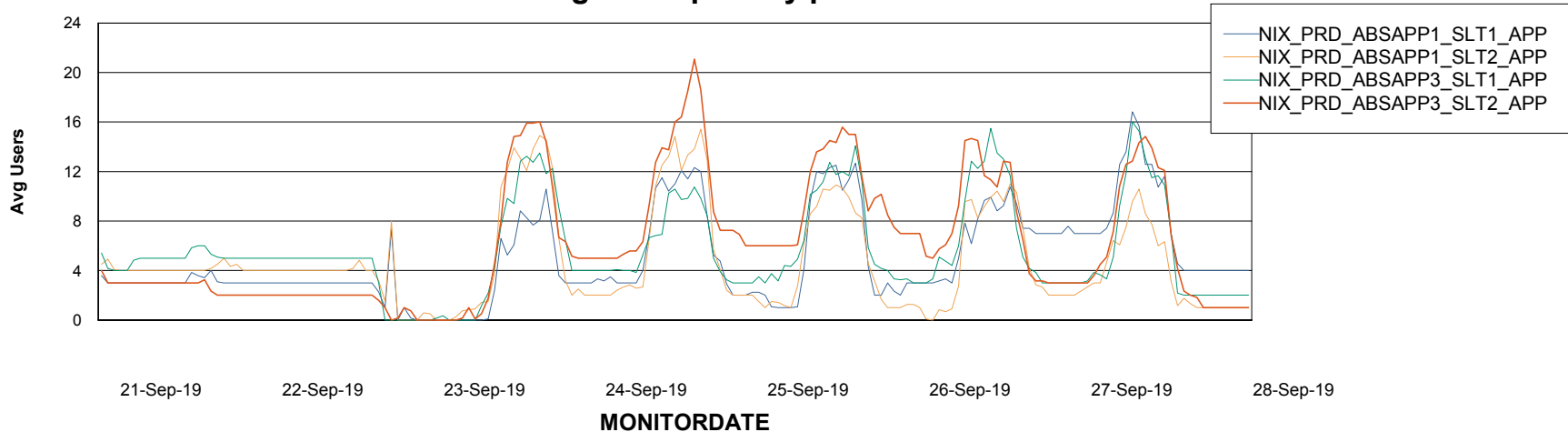


ABSSolute Application Server Services

Avg memory used per ABS Server Service



Avg users per day per ABS server



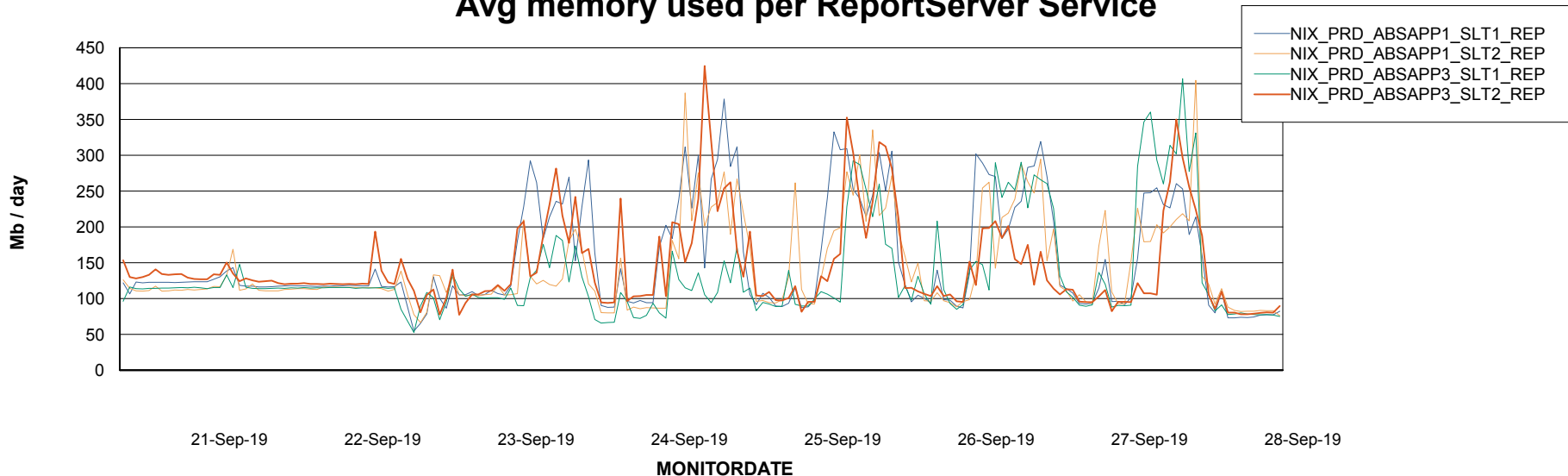
Weekly SLA Customer Report

Customer NIX_Production
Database ID 51



ABSSolute Application ReportServer Services

Avg memory used per ReportServer Service



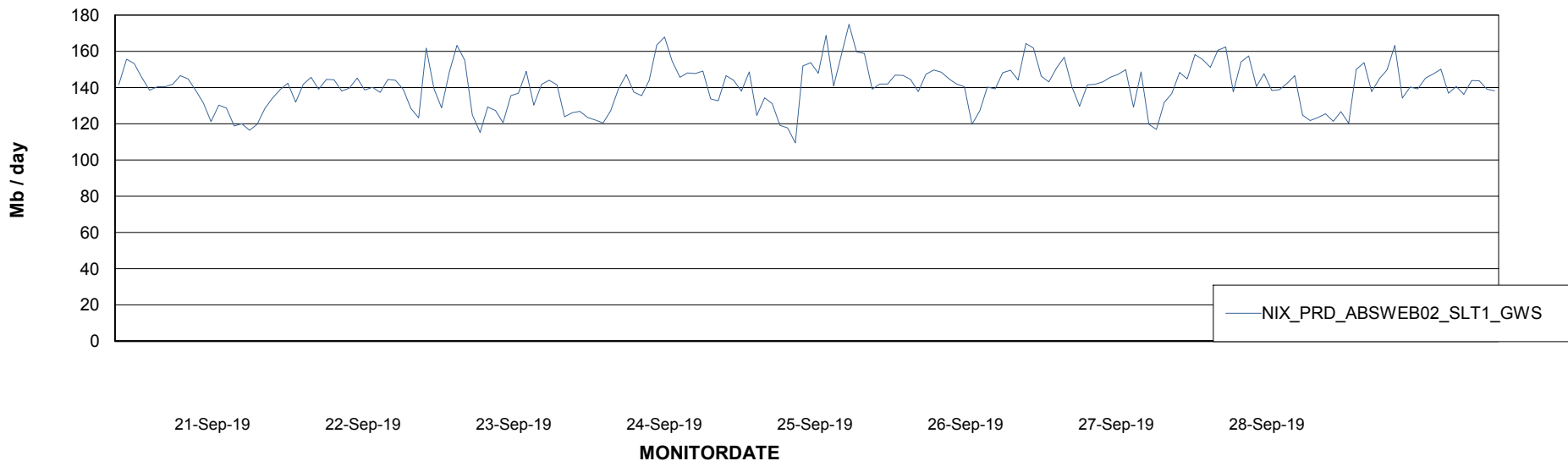
Weekly SLA Customer Report

Customer NIX_Production
Database ID 51



ABSSolute Web Component Services

Avg memory used per ABS Web component



Weekly SLA Customer Report

Customer NIX_Production
Database ID 51



Disaster per ABS component

