

# Weekly SLA Customer Report

Customer STK\_Production  
Database ID 82



Harddisk Usage STK\_PRD\_STAABSAPP1

|           | Free disk space on c: (%) | Total disk space on c: (Gb) |
|-----------|---------------------------|-----------------------------|
| 21-Sep-19 | 72                        | 149                         |
| 20-Sep-19 | 72                        | 149                         |
| 19-Sep-19 | 72                        | 149                         |
| 18-Sep-19 | 72                        | 149                         |
| 17-Sep-19 | 72                        | 149                         |
| 16-Sep-19 | 72                        | 149                         |
| 15-Sep-19 | 73                        | 149                         |

Harddisk Usage STK\_PRD\_STAABSAPP2

|           | Free disk space on c: (%) | Total disk space on c: (Gb) |
|-----------|---------------------------|-----------------------------|
| 21-Sep-19 | 83                        | 149                         |
| 20-Sep-19 | 83                        | 149                         |
| 19-Sep-19 | 83                        | 149                         |
| 18-Sep-19 | 83                        | 149                         |
| 17-Sep-19 | 83                        | 149                         |
| 16-Sep-19 | 83                        | 149                         |
| 15-Sep-19 | 83                        | 149                         |

# Weekly SLA Customer Report

Customer STK\_Production  
Database ID 82



Harddisk Usage STK\_PRD\_STAABSWEB1

|           | Free disk space on c: (%) | Total disk space on c: (Gb) |
|-----------|---------------------------|-----------------------------|
| 21-Sep-19 | 84                        | 100                         |
| 20-Sep-19 | 84                        | 100                         |
| 19-Sep-19 | 84                        | 100                         |
| 18-Sep-19 | 84                        | 100                         |
| 17-Sep-19 | 84                        | 100                         |
| 16-Sep-19 | 84                        | 100                         |
| 15-Sep-19 | 84                        | 100                         |

Harddisk Usage STK\_STAABSDB1 Production DB Server

|           | Free disk space on c: (%) | Total disk space on c: (Gb) | Free disk space on d: (%) | Total disk space on d: (Gb) | Free disk space on e: (%) | Total disk space on e: (Gb) |
|-----------|---------------------------|-----------------------------|---------------------------|-----------------------------|---------------------------|-----------------------------|
| 21-Sep-19 | 70                        | 99                          | 54                        | 350                         | 34                        | 609                         |
| 20-Sep-19 | 70                        | 99                          | 55                        | 350                         | 34                        | 609                         |
| 19-Sep-19 | 70                        | 99                          | 55                        | 350                         | 34                        | 609                         |
| 18-Sep-19 | 70                        | 99                          | 55                        | 350                         | 34                        | 609                         |
| 17-Sep-19 | 70                        | 99                          | 55                        | 350                         | 34                        | 609                         |
| 16-Sep-19 | 70                        | 99                          | 55                        | 350                         | 34                        | 609                         |
| 15-Sep-19 | 70                        | 99                          | 55                        | 350                         | 34                        | 609                         |

# Weekly SLA Customer Report

Customer STK\_Production  
Database ID 82



Harddisk Usage STK\_STAABSDB2 Standby DB Server

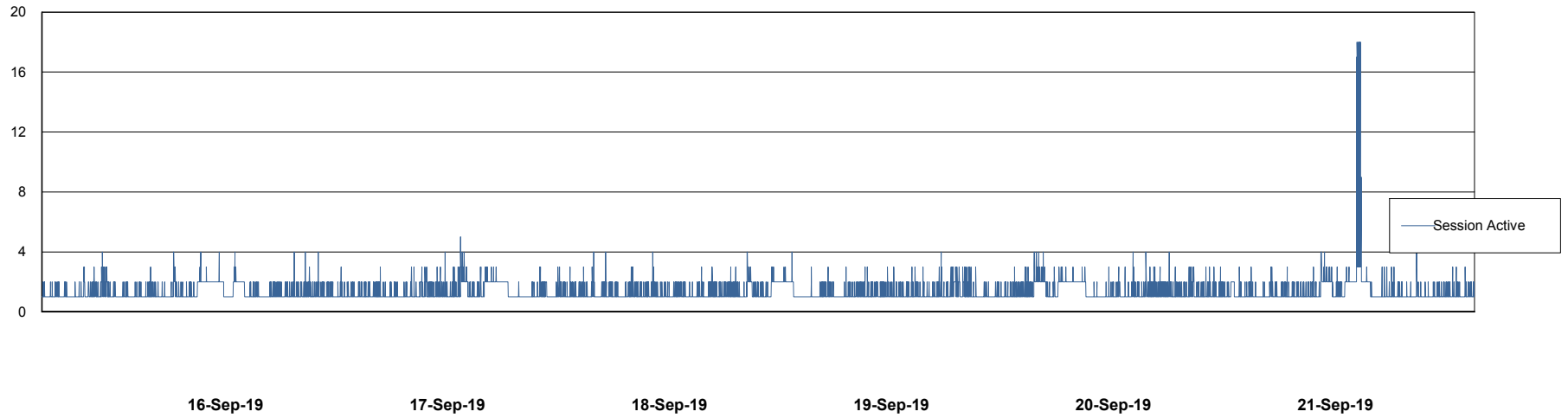
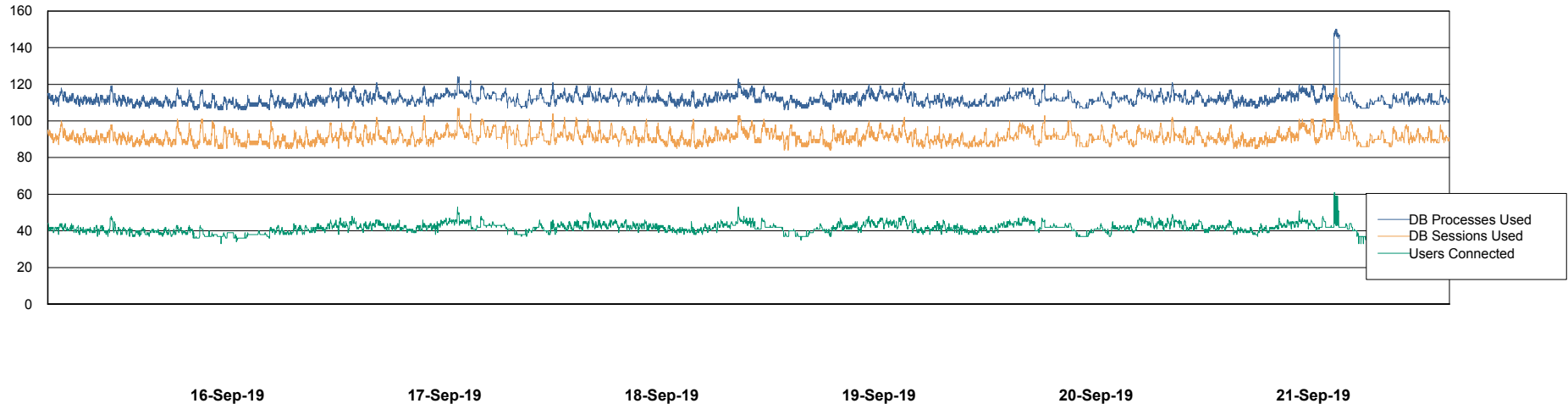
|           | Free disk space on c: (%) | Total disk space on c: (Gb) | Free disk space on d: (%) | Total disk space on d: (Gb) | Free disk space on e: (%) | Total disk space on e: (Gb) |
|-----------|---------------------------|-----------------------------|---------------------------|-----------------------------|---------------------------|-----------------------------|
| 21-Sep-19 | 73                        | 99                          | 47                        | 350                         | 28                        | 1,000                       |
| 20-Sep-19 | 73                        | 99                          | 48                        | 350                         | 28                        | 1,000                       |
| 19-Sep-19 | 73                        | 99                          | 48                        | 350                         | 28                        | 1,000                       |
| 18-Sep-19 | 73                        | 99                          | 47                        | 350                         | 28                        | 1,000                       |
| 17-Sep-19 | 73                        | 99                          | 47                        | 350                         | 28                        | 1,000                       |
| 16-Sep-19 | 72                        | 99                          | 48                        | 350                         | 28                        | 1,000                       |
| 15-Sep-19 | 72                        | 99                          | 48                        | 350                         | 28                        | 1,000                       |

# Weekly SLA Customer Report

Customer STK\_Production  
Database ID 82



## Database Performance STKDB\_ABS1 Production Database

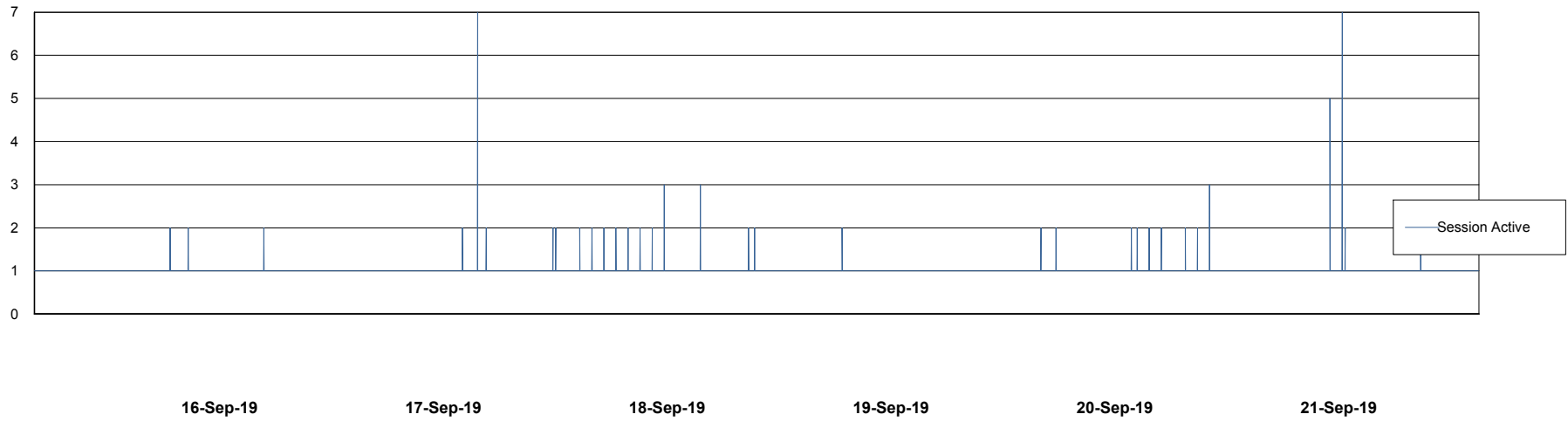
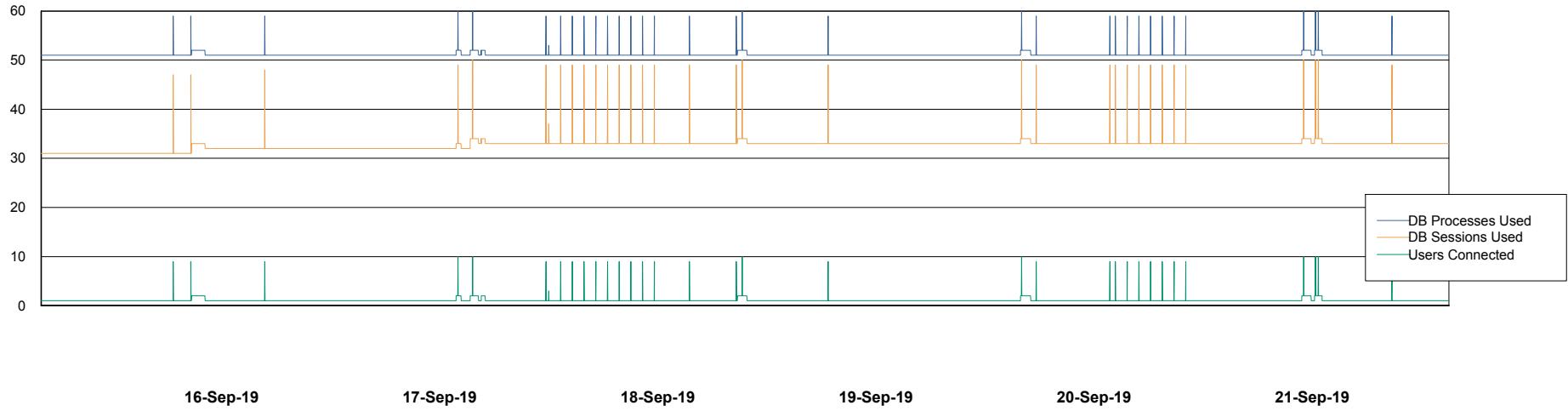


# Weekly SLA Customer Report

Customer STK\_Production  
Database ID 82



## Database Performance STKDB\_ABS1SB Standby Database



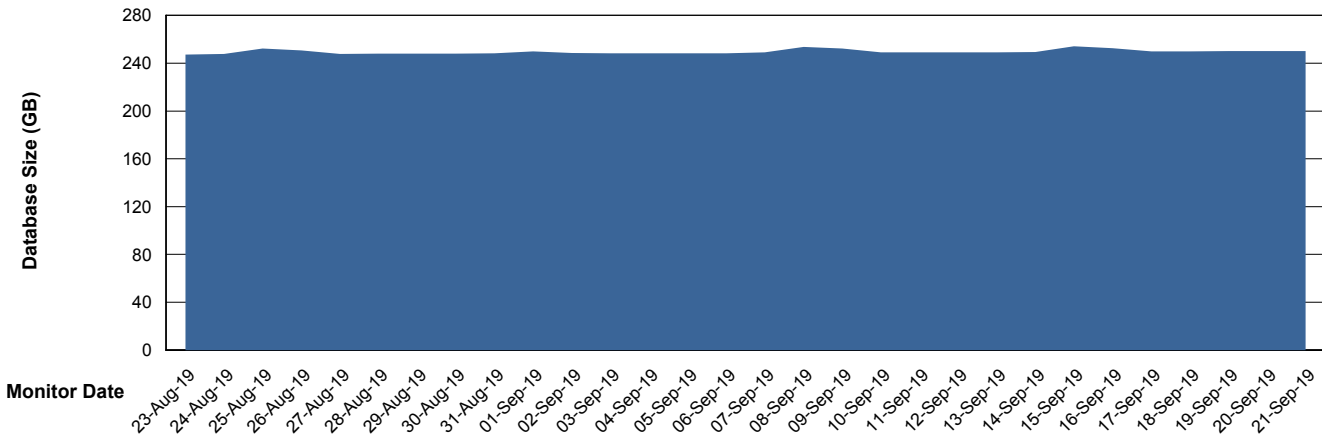
# Weekly SLA Customer Report

Customer STK\_Production  
 Database ID 82



DATABASE SIZE STKDB\_ABS1 Production Database

## Database growth over last month



Database Tablespace STKDB\_ABS1 Production Database

| Date      | Tablespace Name | Filesize (Gb) | Usedsize (Gb) | Percentage free |
|-----------|-----------------|---------------|---------------|-----------------|
| 21-Sep-19 | ABSDATA         | 177           | 107           | 40              |
|           | INDX            | 162           | 137           | 15              |
| 20-Sep-19 | ABSDATA         | 177           | 107           | 40              |
|           | INDX            | 162           | 137           | 15              |
| 19-Sep-19 | ABSDATA         | 177           | 107           | 40              |
|           | INDX            | 162           | 137           | 15              |
| 18-Sep-19 | ABSDATA         | 177           | 107           | 40              |
|           | INDX            | 162           | 136           | 16              |
| 17-Sep-19 | ABSDATA         | 177           | 107           | 40              |
|           | INDX            | 162           | 136           | 16              |
| 16-Sep-19 | ABSDATA         | 177           | 107           | 40              |
|           | INDX            | 162           | 136           | 16              |
| 15-Sep-19 | ABSDATA         | 177           | 107           | 40              |
|           | INDX            | 162           | 136           | 16              |

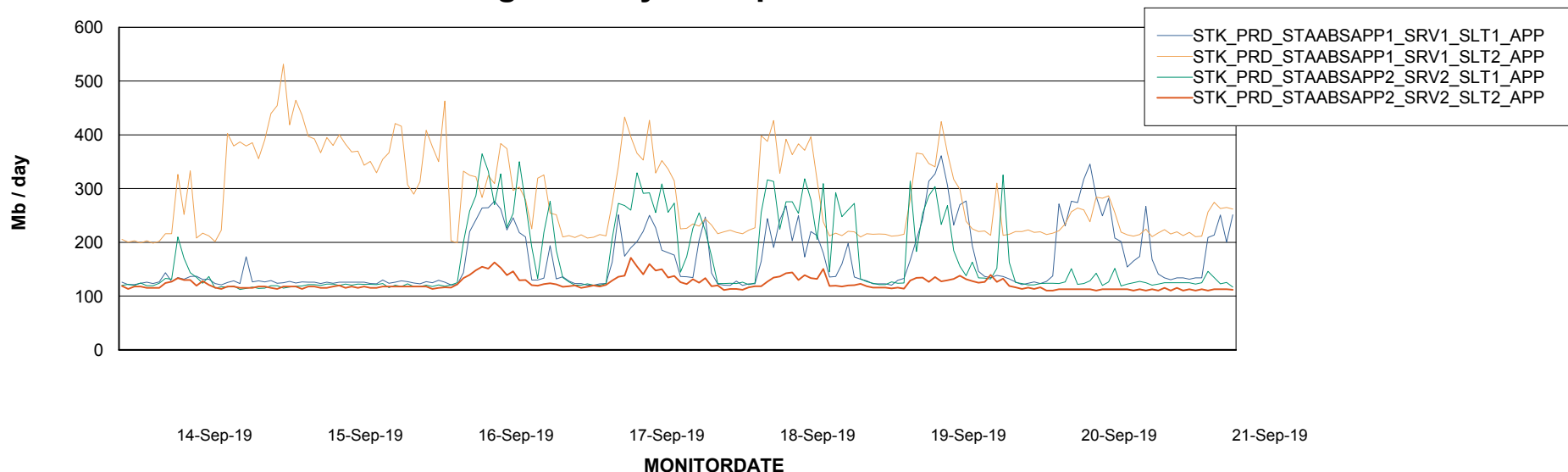
# Weekly SLA Customer Report

Customer STK\_Production  
Database ID 82

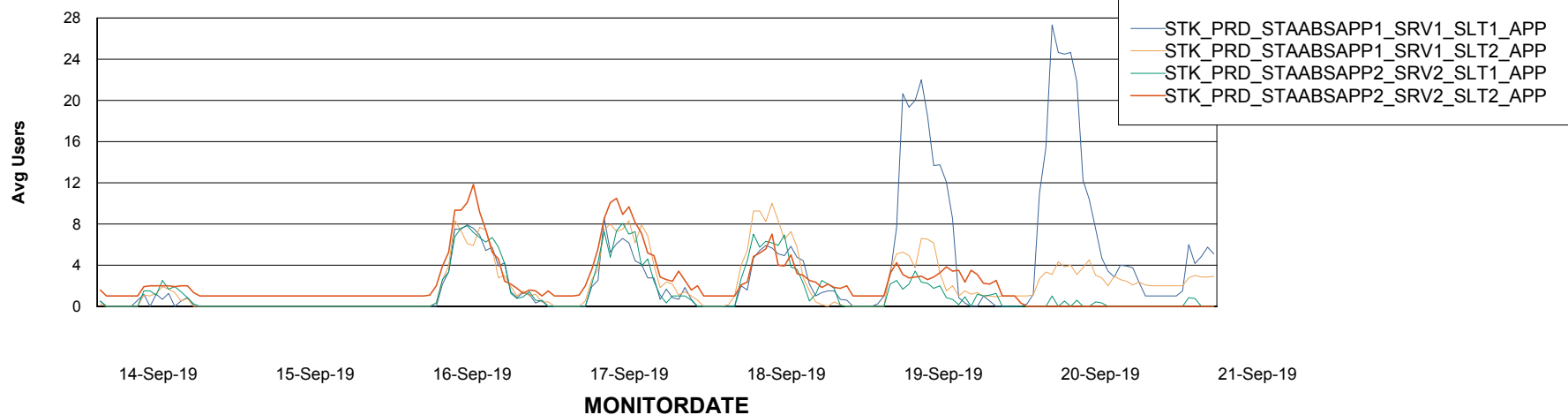


## ABSSolute Application Server Services

### Avg memory used per ABS Server Service



### Avg users per day per ABS server



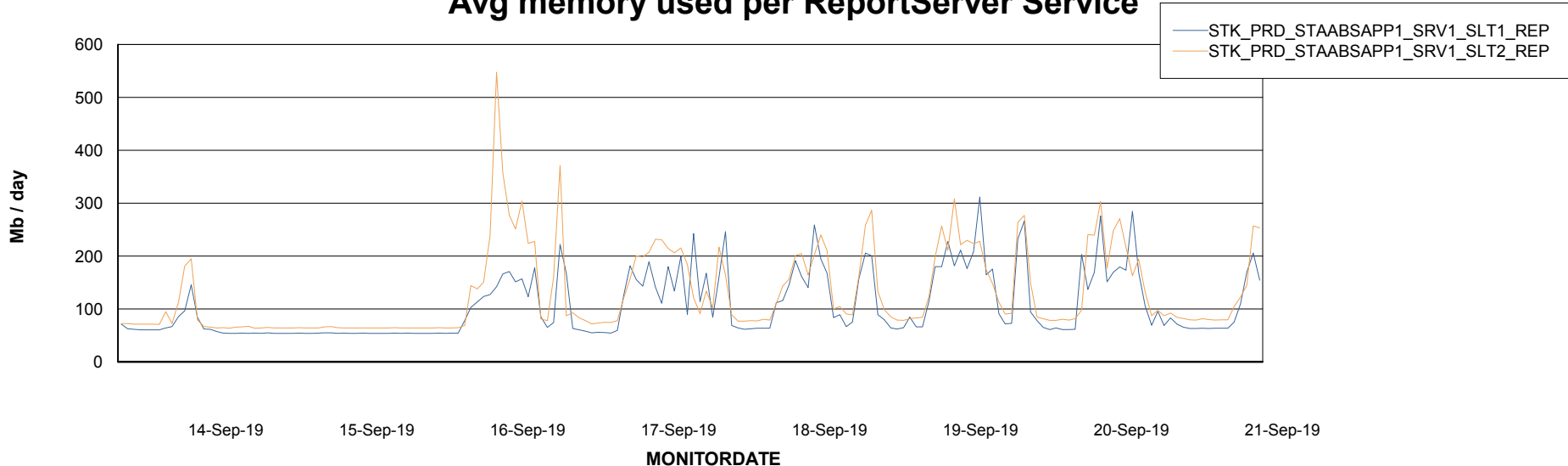
# Weekly SLA Customer Report

Customer STK\_Production  
Database ID 82



## ABSSolute Application ReportServer Services

### Avg memory used per ReportServer Service



### Disaster per ABS component

