

Weekly SLA Customer Report

Customer AUJ_Production
Database ID 41



Harddisk Usage AUJ_PRD_ABS_APP1

	Free disk space on / (%)	Total disk space on / (Gb)	Used disk space on / (Gb)
07-Sep-19	17	241	190
06-Sep-19	17	241	190
05-Sep-19	17	241	190
04-Sep-19	17	241	190
03-Sep-19	17	241	190
02-Sep-19	17	241	190
01-Sep-19	17	241	190

Harddisk Usage AUJ_PRD_ABS_APP2

	Free disk space on / (%)	Total disk space on / (Gb)	Used disk space on / (Gb)
07-Sep-19	16	241	193
06-Sep-19	16	241	193
05-Sep-19	16	241	192
04-Sep-19	16	241	192
03-Sep-19	16	241	192
02-Sep-19	16	241	192
01-Sep-19	16	241	192

Weekly SLA Customer Report

Customer AUJ_Production
Database ID 41



Harddisk Usage AUJ_PRD_ABS_APP3

	Free disk space on / (%)	Total disk space on / (Gb)	Used disk space on / (Gb)
07-Sep-19	91	247	22
06-Sep-19	91	247	22
05-Sep-19	91	247	22
04-Sep-19	91	247	22
03-Sep-19	91	247	22
02-Sep-19	91	247	22
01-Sep-19	91	247	22

Harddisk Usage AUJ_PRD_ORACLE4

	Free disk space on / (%)	Total disk space on / (Gb)	Used disk space on / (Gb)	Free disk space on /bk (%)	Total disk space on /bk (Gb)	Used disk space on /bk (Gb)	Free disk space on /data (%)	Total disk space on /data (Gb)	Used disk space on /da /data
07-Sep-19	97	534	13	54	4,436	1,938	74	4,436	1,079
06-Sep-19	97	534	13	57	4,436	1,805	74	4,436	1,079
05-Sep-19	97	534	13	54	4,436	1,945	74	4,436	1,079
04-Sep-19	97	534	13	54	4,436	1,925	74	4,436	1,079
03-Sep-19	97	534	13	54	4,436	1,937	74	4,436	1,079
02-Sep-19	97	534	13	54	4,436	1,936	74	4,436	1,079
01-Sep-19	97	534	13	54	4,436	1,929	74	4,436	1,079

Weekly SLA Customer Report

Customer AUJ_Production
Database ID 41



Harddisk Usage AUJ_PRD_ORACLE5

	Free disk space on / (%)	Total disk space on / (Gb)	Used disk space on / (Gb)	Free disk space on /bk (%)	Total disk space on /bk (Gb)	Used disk space on /bk (Gb)	Free disk space on /data (%)	Total disk space on /data (Gb)	Used disk space on /da /data
07-Sep-19	97	534	16	94	4,436	233	75	4,436	1,064
06-Sep-19	97	534	16	94	4,436	237	75	4,436	1,065
05-Sep-19	97	534	16	94	4,436	237	75	4,436	1,065
04-Sep-19	97	534	16	94	4,436	238	75	4,436	1,065
03-Sep-19	97	534	16	94	4,436	237	75	4,436	1,065
02-Sep-19	97	534	16	95	4,436	230	75	4,436	1,065
01-Sep-19	97	534	16	95	4,436	224	75	4,436	1,064

Harddisk Usage AUJ_PRD_ORACLE6

	Free disk space on / (%)	Total disk space on / (Gb)	Used disk space on / (Gb)	Free disk space on /bk (%)	Total disk space on /bk (Gb)	Used disk space on /bk (Gb)	Free disk space on /data (%)	Total disk space on /data (Gb)	Used disk space on /da /data
07-Sep-19	87	534	68	87	534	68	75	4,436	1,056
06-Sep-19	86	534	72	86	534	72	75	4,436	1,057
05-Sep-19	86	534	72	86	534	72	75	4,436	1,057
04-Sep-19	86	534	73	86	534	73	75	4,436	1,057
03-Sep-19	86	534	71	86	534	71	75	4,436	1,057
02-Sep-19	88	534	62	88	534	62	75	4,436	1,057
01-Sep-19	89	534	57	89	534	57	75	4,436	1,057

Weekly SLA Customer Report

Customer AUJ_Production
Database ID 41



Harddisk Usage AUJ_PRD_ORACLE_BI1

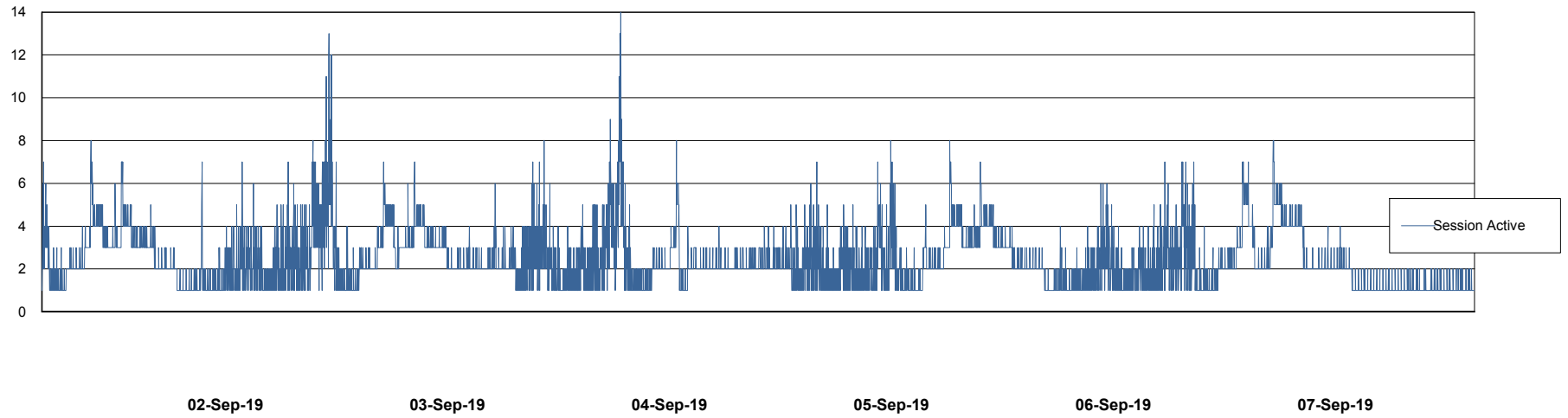
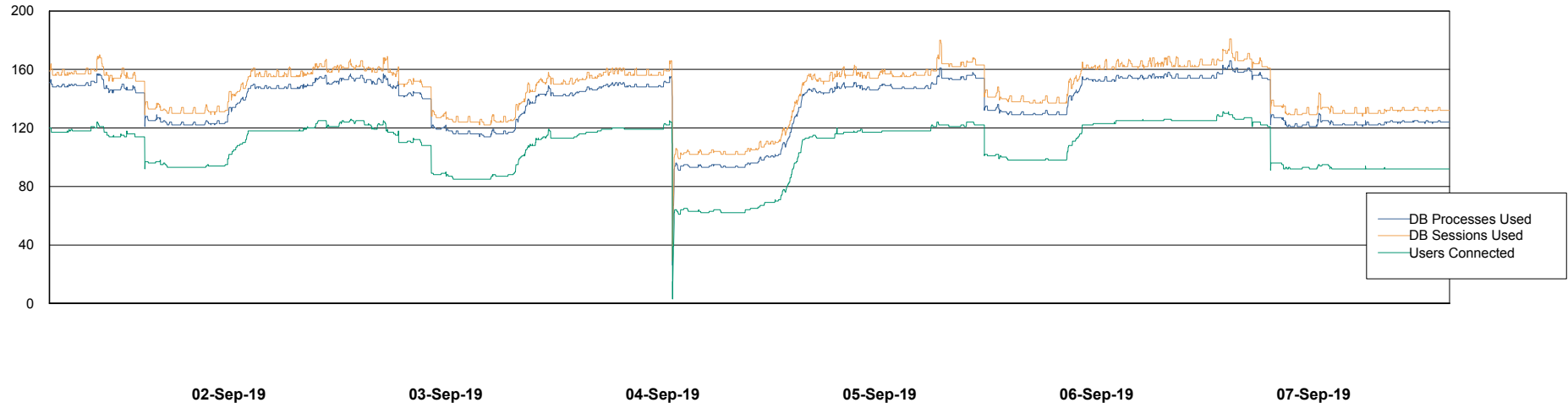
	Free disk space on / (%)	Total disk space on / (Gb)	Used disk space on / (Gb)
07-Sep-19	27	526	366
06-Sep-19	27	526	363
05-Sep-19	27	526	363
04-Sep-19	27	526	363
03-Sep-19	27	526	363
02-Sep-19	27	526	363
01-Sep-19	27	526	365

Weekly SLA Customer Report

Customer AUJ_Production
Database ID 41



Database Performance AUJ_DB4_Primary

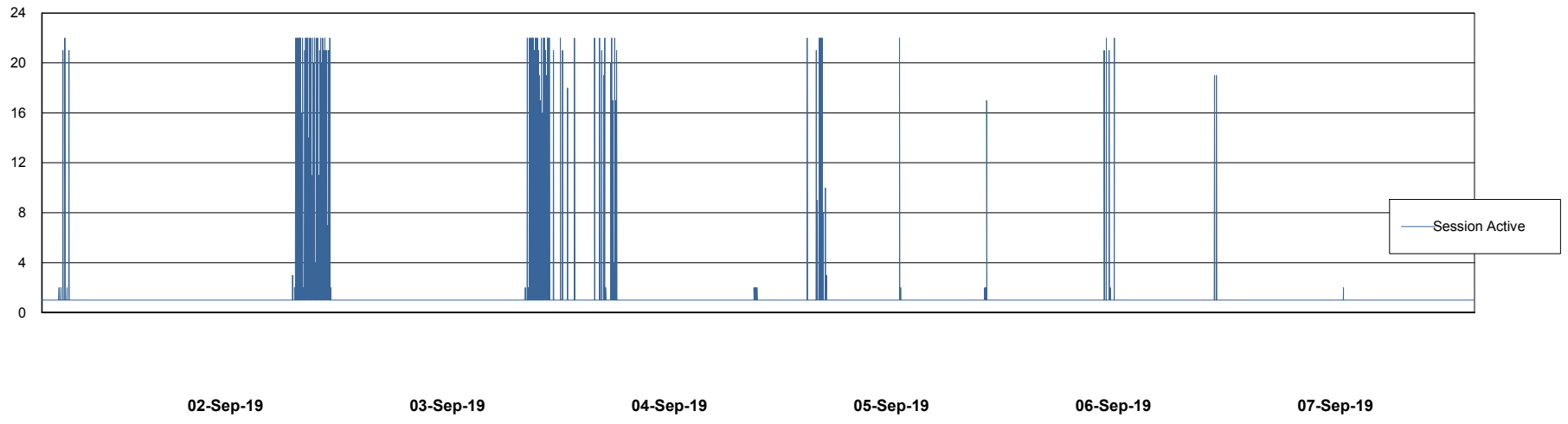
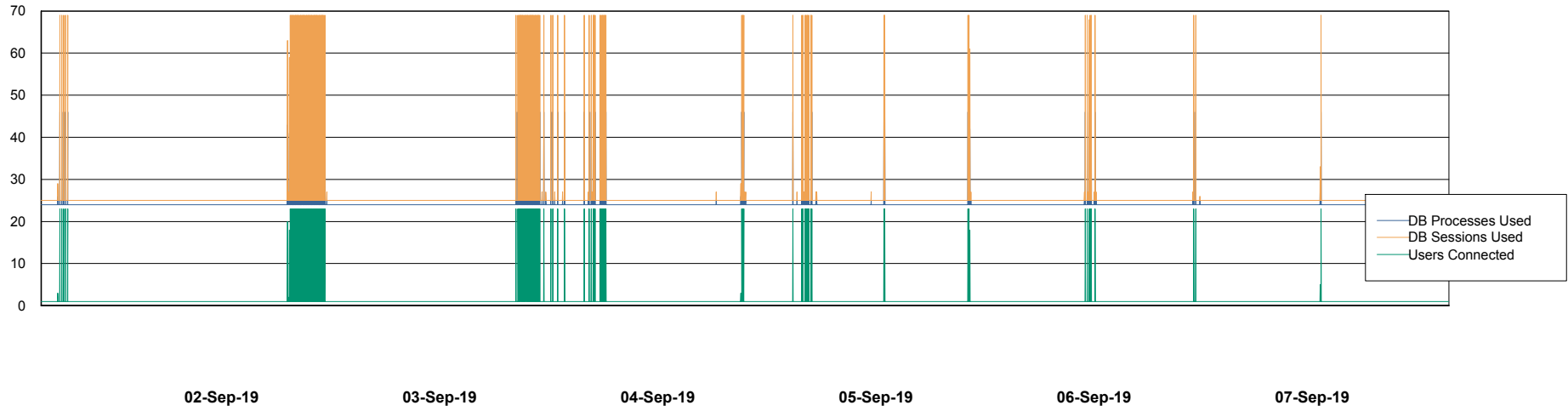


Weekly SLA Customer Report

Customer AUJ_Production
Database ID 41



Database Performance AUJ_DB5_Standby

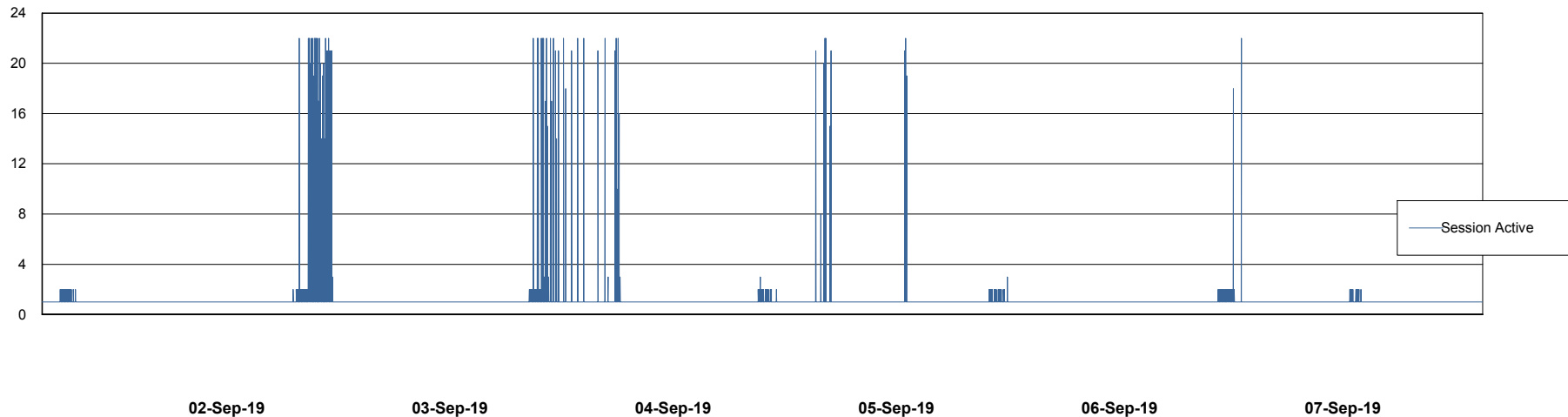
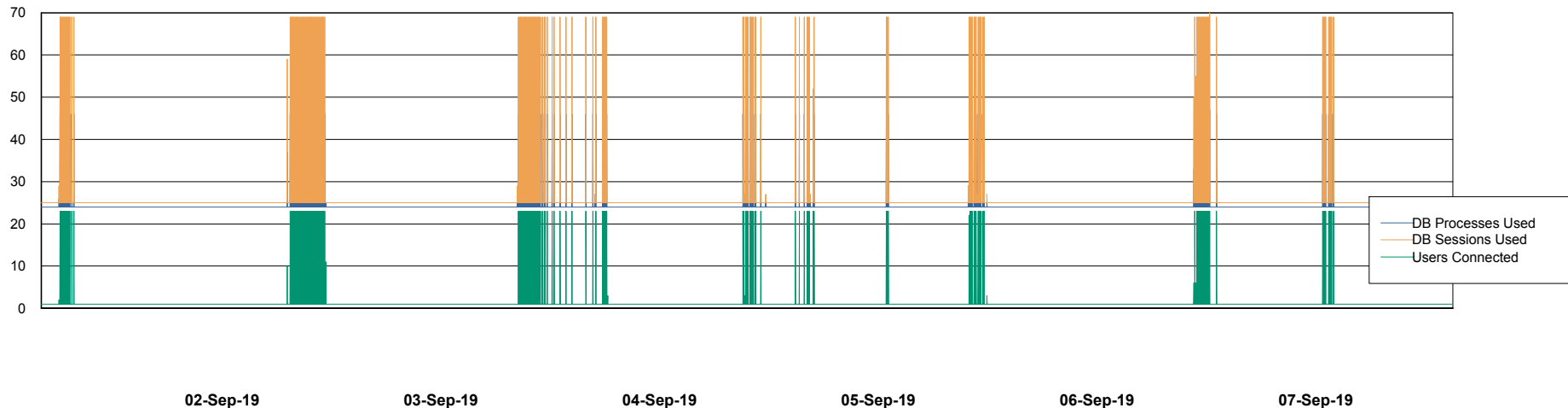


Weekly SLA Customer Report

Customer AUJ_Production
Database ID 41



Database Performance AUJ_DB6_Standby2

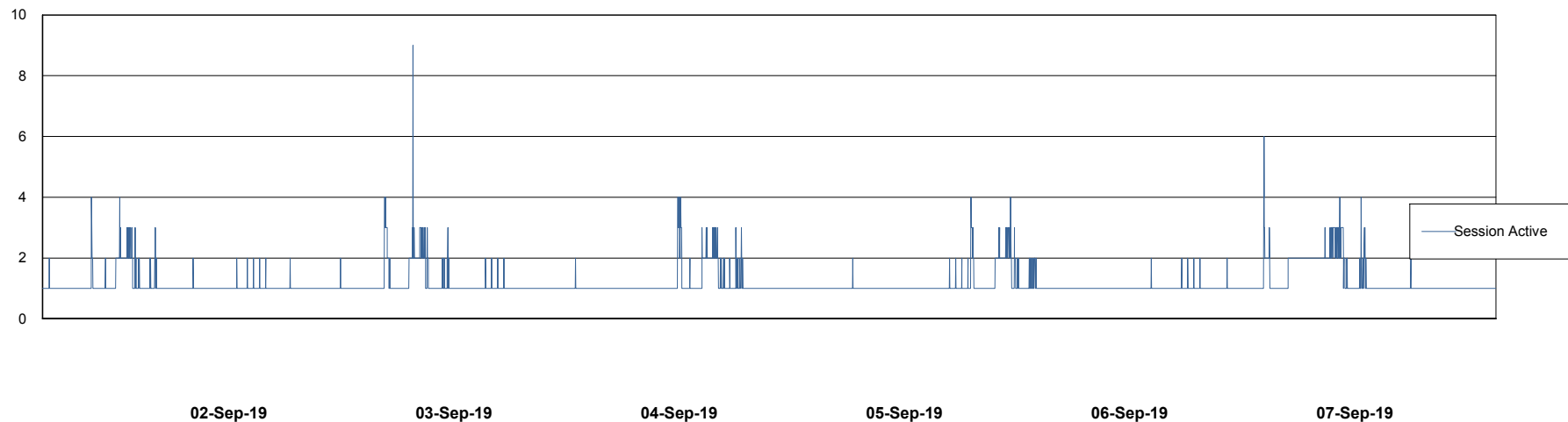
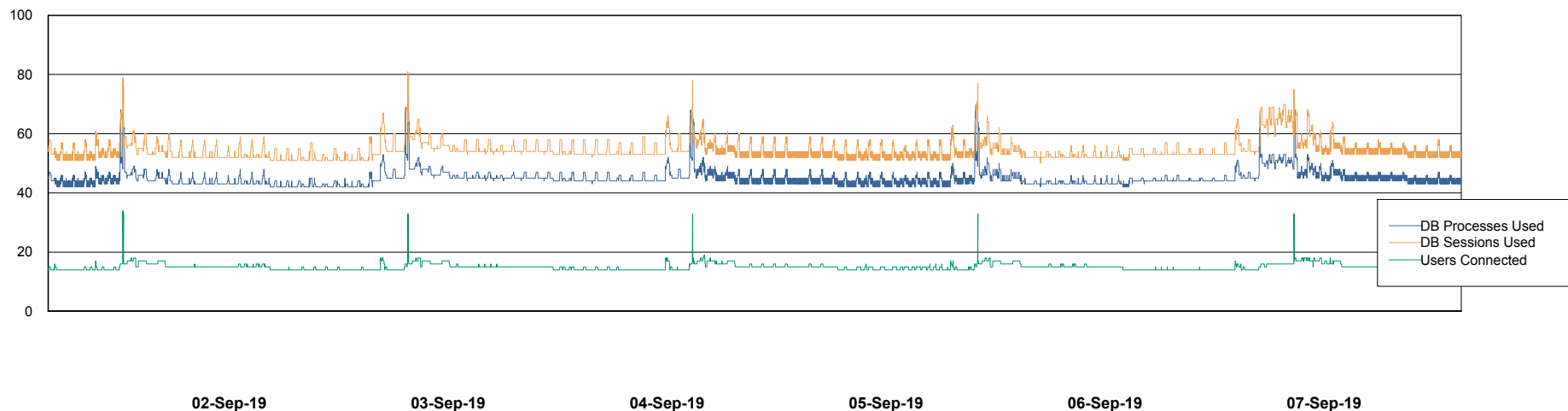


Weekly SLA Customer Report

Customer AUJ_Production
Database ID 41



Database Performance AUJDB_BI

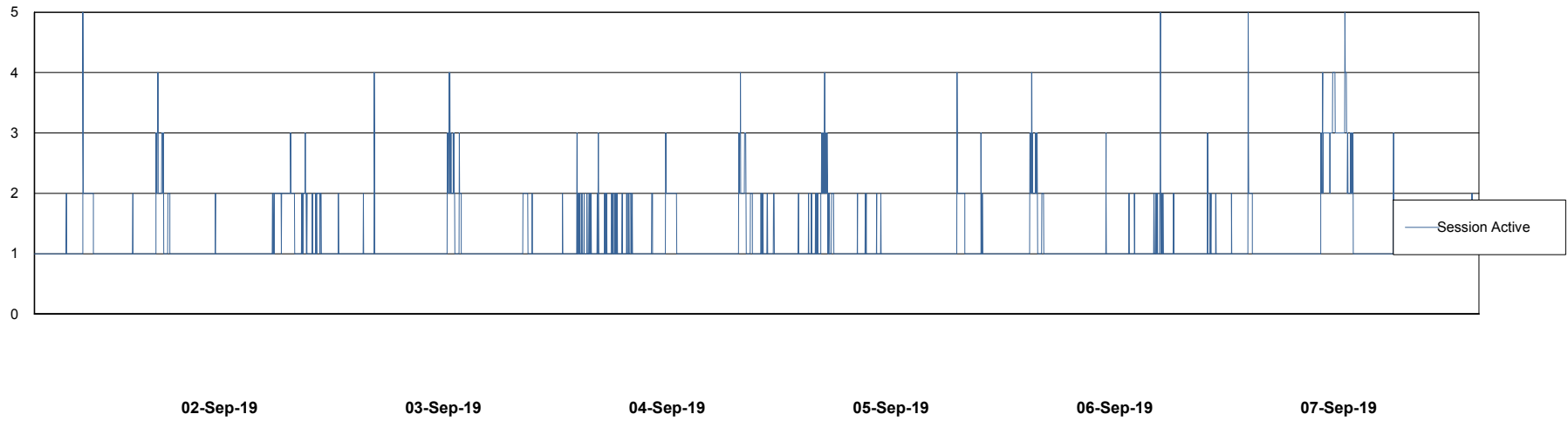
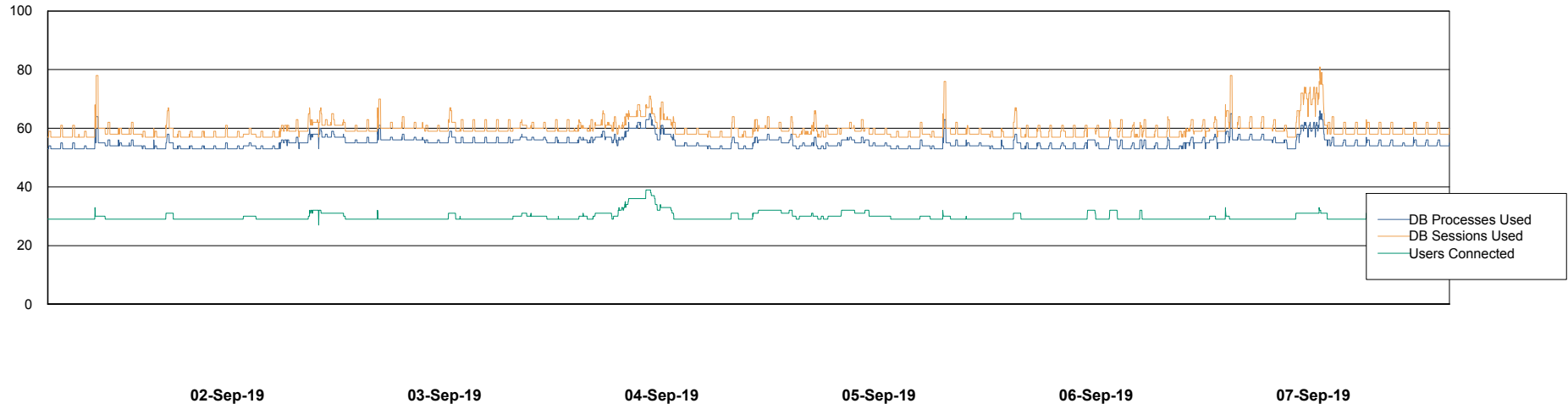


Weekly SLA Customer Report

Customer AUJ_Production
Database ID 41



Database Performance AUJDB_BI_TS1



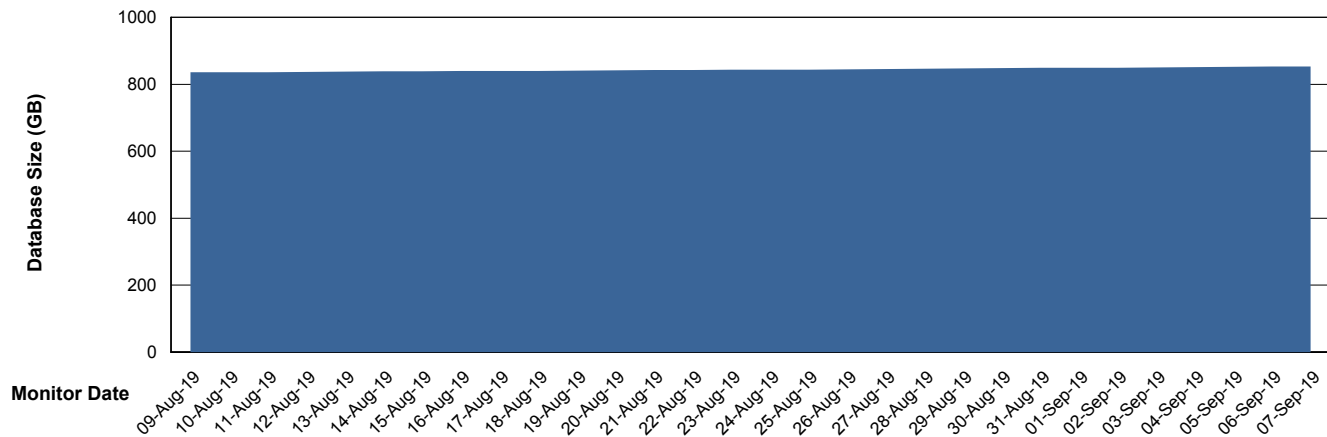
Weekly SLA Customer Report

Customer AUJ_Production
Database ID 41



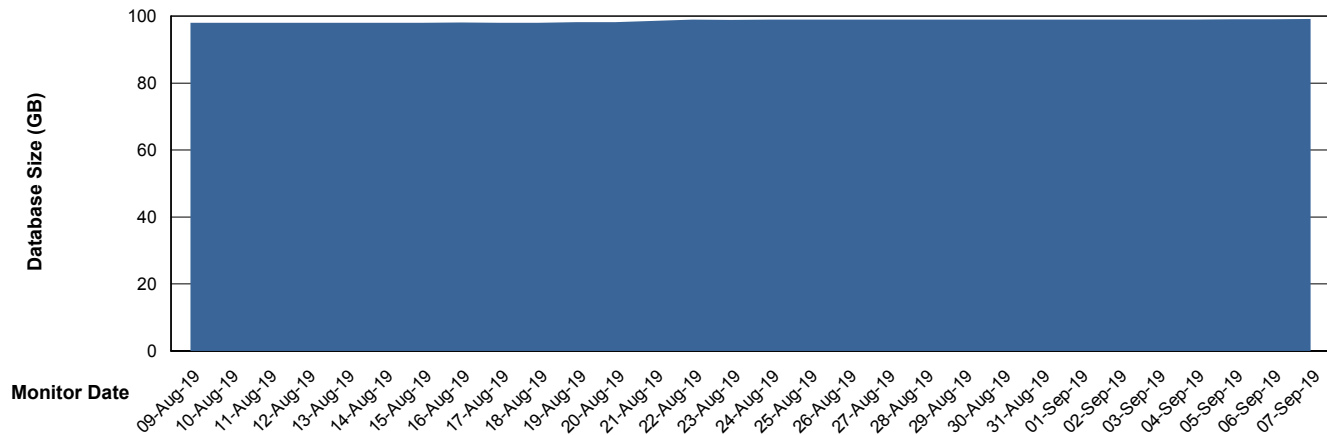
DATABASE SIZE AUJ_DB4_Primary

Database growth over last month



DATABASE SIZE AUJDB_BI

Database growth over last month



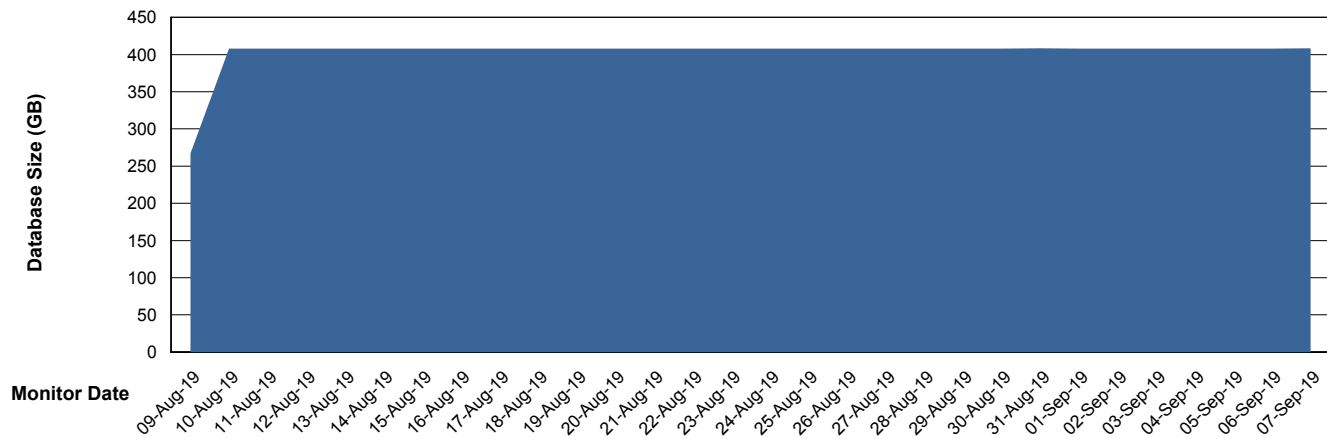
Weekly SLA Customer Report

Customer AUJ_Production
Database ID 41



DATABASE SIZE AUJDB_BI_TS1

Database growth over last month



Weekly SLA Customer Report

Customer AUJ_Production
 Database ID 41



Database Tablespace AUJ_DB4_Primary

Date	Tablespace Name	Filesize (Gb)	Usedsize (Gb)	Percentage free
07-Sep-19	ABSDATA	469	360	23
	INDX	531	491	8
06-Sep-19	ABSDATA	469	360	23
	INDX	531	491	8
05-Sep-19	ABSDATA	469	360	23
	INDX	531	491	8
04-Sep-19	ABSDATA	469	359	23
	INDX	531	490	8
03-Sep-19	ABSDATA	469	359	23
	INDX	531	490	8
02-Sep-19	ABSDATA	469	359	23
	INDX	531	489	8
01-Sep-19	ABSDATA	469	358	24
	INDX	531	489	8

Weekly SLA Customer Report

Customer AUJ_Production
 Database ID 41



Database Tablespace AUJDB_BI

Date	Tablespace Name	Filesize (Gb)	Usedsize (Gb)	Percentage free
07-Sep-19	ABSDATA	113	80	29
	INDX	68	15	78
06-Sep-19	ABSDATA	113	80	29
	INDX	68	15	78
05-Sep-19	ABSDATA	113	80	29
	INDX	68	15	78
04-Sep-19	ABSDATA	113	80	29
	INDX	68	15	78
03-Sep-19	ABSDATA	113	80	29
	INDX	68	15	78
02-Sep-19	ABSDATA	113	80	29
	INDX	68	15	78
01-Sep-19	ABSDATA	113	80	29
	INDX	68	15	78

Weekly SLA Customer Report

Customer AUJ_Production
 Database ID 41



Database Tablespace AUJDB_BI_TS1

Date	Tablespace Name	Filesize (Gb)	Usedsize (Gb)	Percentage free
07-Sep-19	ABSDATA	282	236	16
	INDX	382	169	56
06-Sep-19	ABSDATA	282	236	16
	INDX	382	169	56
05-Sep-19	ABSDATA	282	236	16
	INDX	382	169	56
04-Sep-19	ABSDATA	282	236	16
	INDX	382	169	56
03-Sep-19	ABSDATA	282	236	16
	INDX	382	169	56
02-Sep-19	ABSDATA	282	236	16
	INDX	382	169	56
01-Sep-19	ABSDATA	282	236	16
	INDX	382	169	56

BI Status and last ETL error for AUJDB_BI

	Sun 1/9/2019	Mon 2/9/2019	Tue 3/9/2019	Wed 4/9/2019	Thu 5/9/2019	Fri 6/9/2019	Sat 7/9/2019
ABS DataWarehouse ETL Health	OK	OK	OK	OK	OK	OK	OK
ABS DWHStaging ETL Health	OK	OK	OK	OK	OK	OK	OK

BI Status and last ETL error for AUJDB_BI_TS1

	Sun 1/9/2019	Mon 2/9/2019	Tue 3/9/2019	Wed 4/9/2019	Thu 5/9/2019	Fri 6/9/2019	Sat 7/9/2019
ABS DataWarehouse ETL Health	OK	OK	OK	OK	OK	OK	Not OK
ABS DWHStaging ETL Health	OK	OK	OK	OK	OK	OK	OK

BI last ETL error for AUJDB_BI_TS1

Sat, 7-09-2019 ORA-01722: invalid number

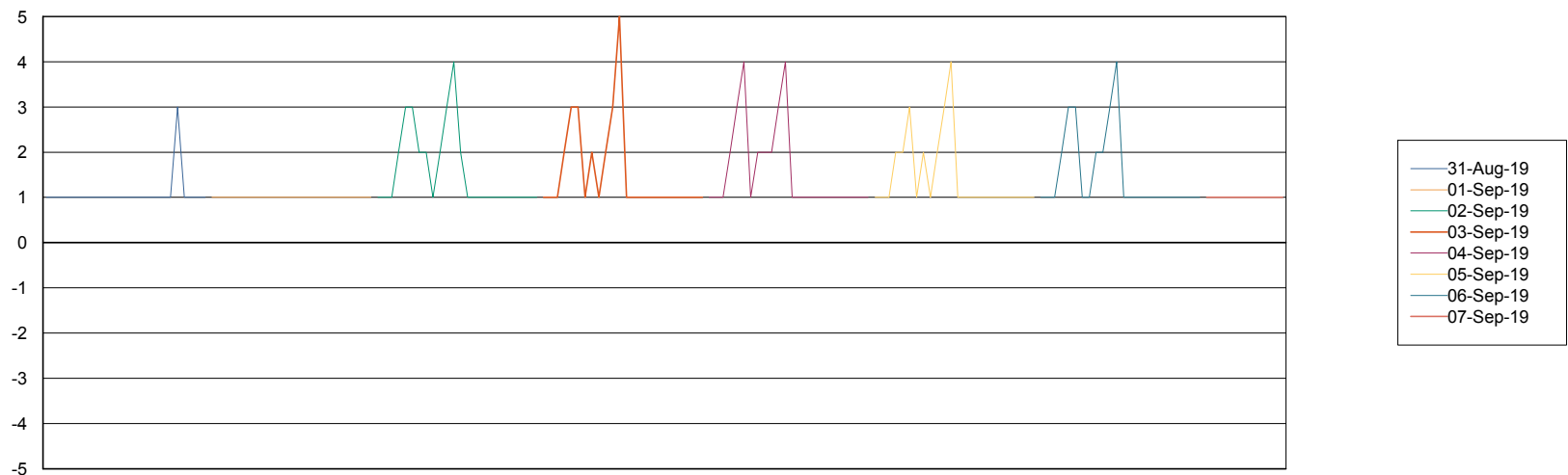
Weekly SLA Customer Report

Customer AUJ_Production
Database ID 41



Standby Database Health AUJ_Production

Recovery lag for last 7 days



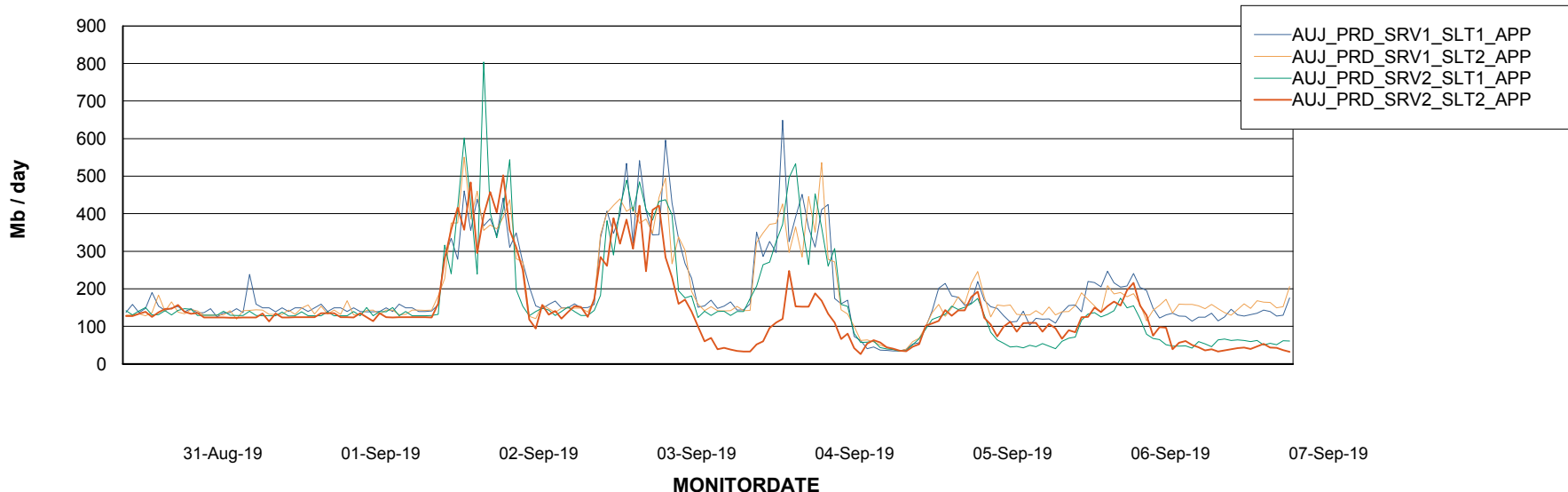
Weekly SLA Customer Report

Customer AUJ_Production
Database ID 41

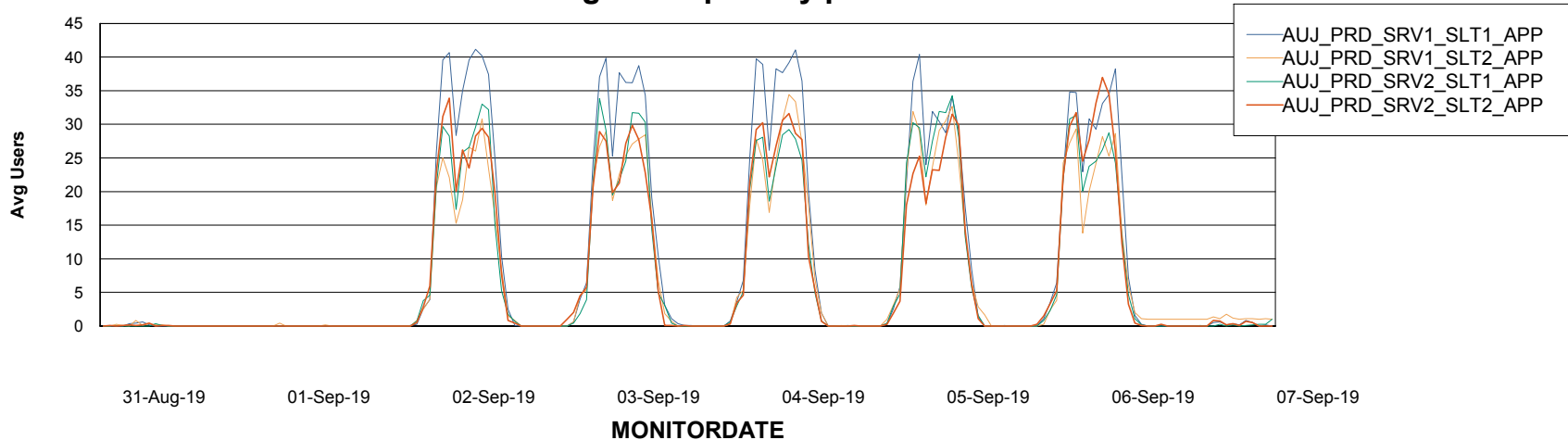


ABSSolute Application Server Services

Avg memory used per ABS Server Service



Avg users per day per ABS server



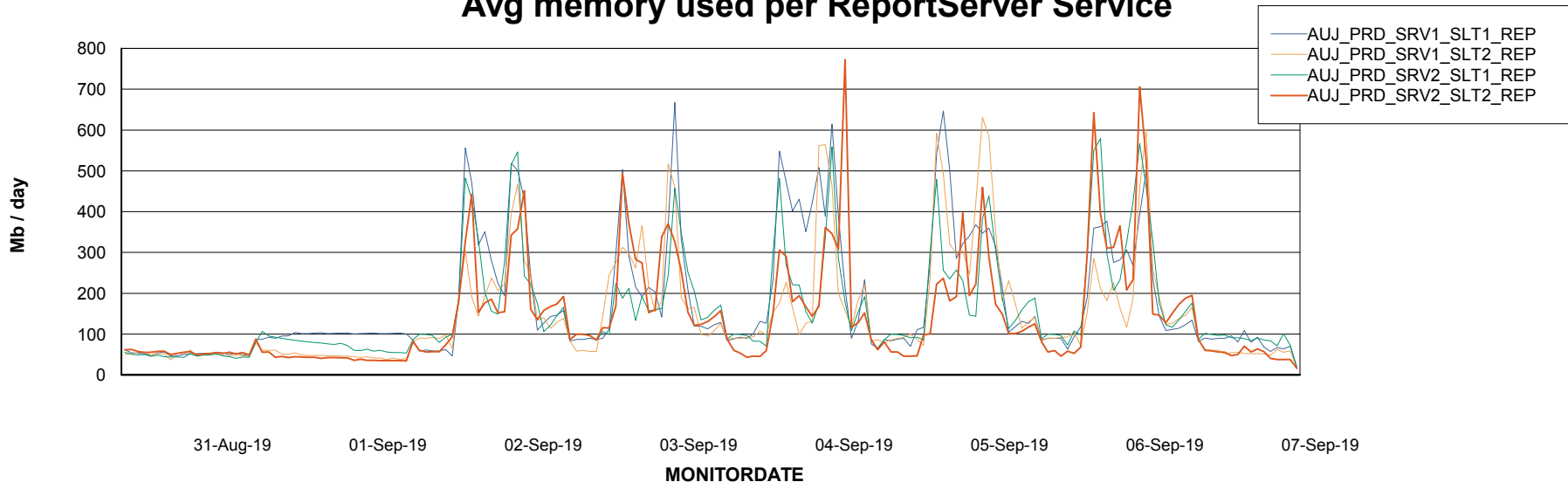
Weekly SLA Customer Report

Customer AUJ_Production
Database ID 41



ABSolute Application ReportServer Services

Avg memory used per ReportServer Service



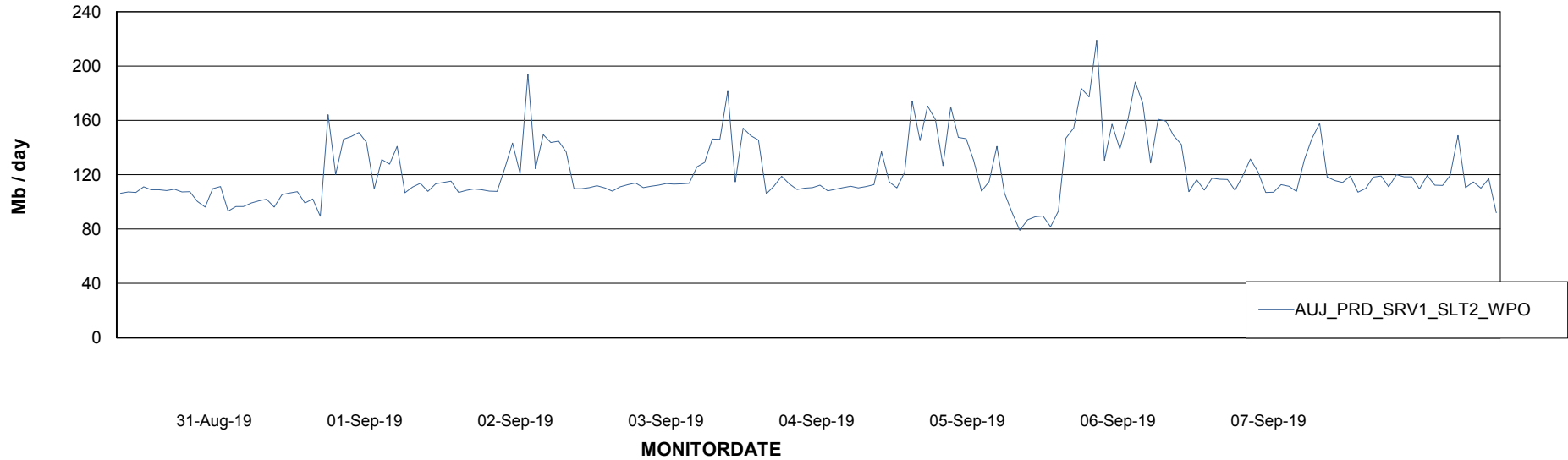
Weekly SLA Customer Report

Customer AUJ_Production
Database ID 41



ABSSolute Web Component Services

Avg memory used per ABS Web component



Weekly SLA Customer Report

Customer AUJ_Production
Database ID 41



Disaster per ABS component

