

# Weekly SLA Customer Report

Customer AUJ\_Production  
Database ID 41



## Harddisk Usage AUJ\_PRD\_ABS\_APP1

	Free disk space on / (%)	Total disk space on / (Gb)	Used disk space on / (Gb)
31-Aug-19	17	241	190
30-Aug-19	17	241	190
29-Aug-19	17	241	190
28-Aug-19	17	241	190
27-Aug-19	17	241	190
26-Aug-19	17	241	190
25-Aug-19	17	241	190

## Harddisk Usage AUJ\_PRD\_ABS\_APP2

	Free disk space on / (%)	Total disk space on / (Gb)	Used disk space on / (Gb)
31-Aug-19	16	241	192
30-Aug-19	16	241	192
29-Aug-19	16	241	192
28-Aug-19	16	241	192
27-Aug-19	16	241	192
26-Aug-19	16	241	192
25-Aug-19	16	241	192

# Weekly SLA Customer Report

Customer AUJ\_Production  
Database ID 41



## Harddisk Usage AUJ\_PRD\_ABS\_APP3

	Free disk space on / (%)	Total disk space on / (Gb)	Used disk space on / (Gb)
31-Aug-19	91	247	22
30-Aug-19	91	247	22
29-Aug-19	91	247	22
28-Aug-19	91	247	22
27-Aug-19	91	247	22
26-Aug-19	91	247	22
25-Aug-19	91	247	22

## Harddisk Usage AUJ\_PRD\_ORACLE4

	Free disk space on / (%)	Total disk space on / (Gb)	Used disk space on / (Gb)	Free disk space on /bk (%)	Total disk space on /bk (Gb)	Used disk space on /bk (Gb)	Free disk space on /data (%)	Total disk space on /data (Gb)	Used disk space on /da /data
31-Aug-19	97	534	13	55	4,436	1,909	74	4,436	1,079
30-Aug-19	97	534	13	50	4,436	2,091	74	4,436	1,079
29-Aug-19	97	534	13	54	4,436	1,953	74	4,436	1,079
28-Aug-19	97	534	13	53	4,436	1,985	74	4,436	1,079
27-Aug-19	97	534	13	52	4,436	2,017	74	4,436	1,079
26-Aug-19	97	534	13	56	4,436	1,859	74	4,436	1,079
25-Aug-19	97	534	13	57	4,436	1,831	74	4,436	1,079

# Weekly SLA Customer Report

Customer AUJ\_Production  
Database ID 41



## Harddisk Usage AUJ\_PRD\_ORACLE5

	Free disk space on / (%)	Total disk space on / (Gb)	Used disk space on / (Gb)	Free disk space on /bk (%)	Total disk space on /bk (Gb)	Used disk space on /bk (Gb)	Free disk space on /data (%)	Total disk space on /data (Gb)	Used disk space on /da /data
31-Aug-19	97	534	16	95	4,436	231	75	4,436	1,064
30-Aug-19	97	534	16	94	4,436	234	75	4,436	1,065
29-Aug-19	97	534	16	94	4,436	234	75	4,436	1,065
28-Aug-19	97	534	16	94	4,436	233	75	4,436	1,065
27-Aug-19	97	534	16	94	4,436	232	75	4,436	1,065
26-Aug-19	97	534	16	95	4,436	225	75	4,436	1,065
25-Aug-19	97	534	16	95	4,436	220	75	4,436	1,064

## Harddisk Usage AUJ\_PRD\_ORACLE6

	Free disk space on / (%)	Total disk space on / (Gb)	Used disk space on / (Gb)	Free disk space on /bk (%)	Total disk space on /bk (Gb)	Used disk space on /bk (Gb)	Free disk space on /data (%)	Total disk space on /data (Gb)	Used disk space on /da /data
31-Aug-19	87	534	66	87	534	66	75	4,436	1,056
30-Aug-19	86	534	69	86	534	69	75	4,436	1,057
29-Aug-19	86	534	69	86	534	69	75	4,436	1,057
28-Aug-19	87	534	68	87	534	68	75	4,436	1,057
27-Aug-19	87	534	66	87	534	66	75	4,436	1,057
26-Aug-19	89	534	57	89	534	57	75	4,436	1,057
25-Aug-19	90	534	53	90	534	53	75	4,436	1,057

# Weekly SLA Customer Report

Customer AUJ\_Production  
Database ID 41



Harddisk Usage AUJ\_PRD\_ORACLE\_BI1

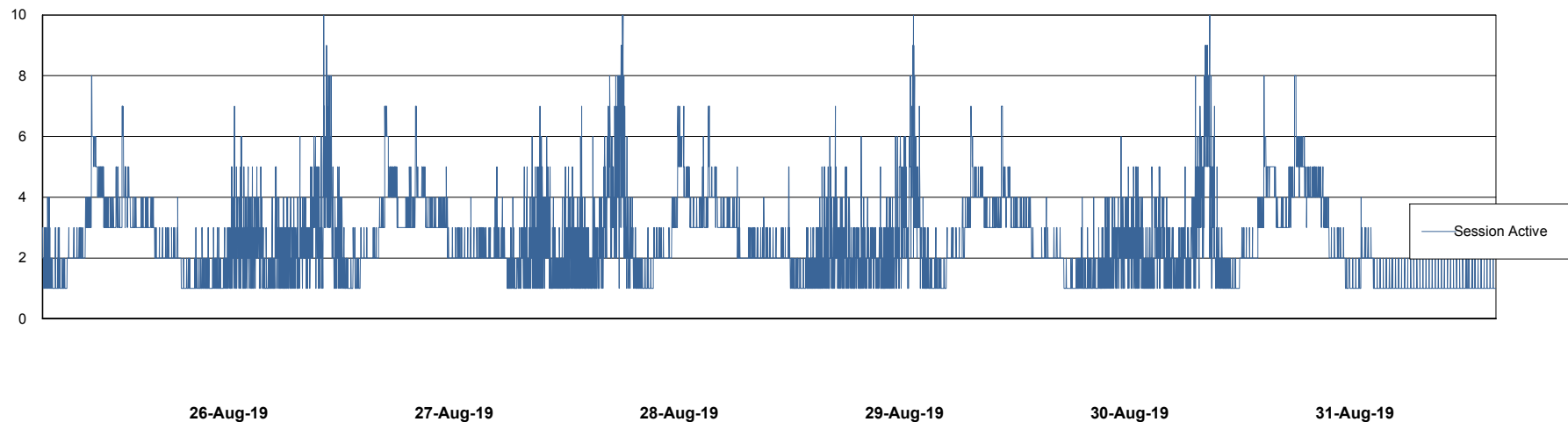
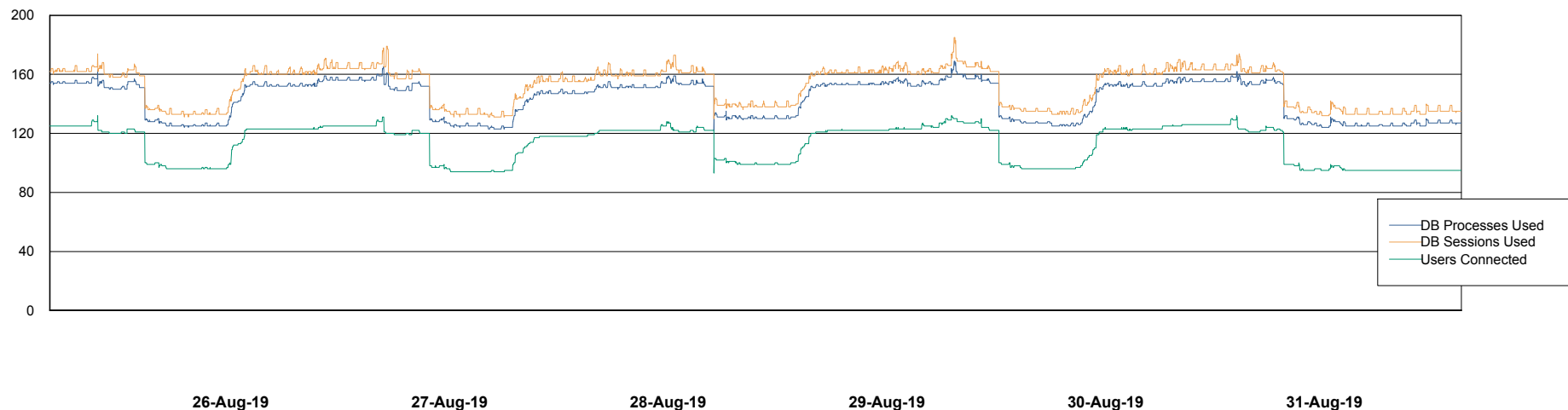
	Free disk space on / (%)	Total disk space on / (Gb)	Used disk space on / (Gb)
31-Aug-19	27	526	366
30-Aug-19	27	526	363
29-Aug-19	27	526	363
28-Aug-19	27	526	363
27-Aug-19	27	526	363
26-Aug-19	27	526	363
25-Aug-19	27	526	365

# Weekly SLA Customer Report

Customer AUJ\_Production  
Database ID 41



## Database Performance AUJ\_DB4\_Primary

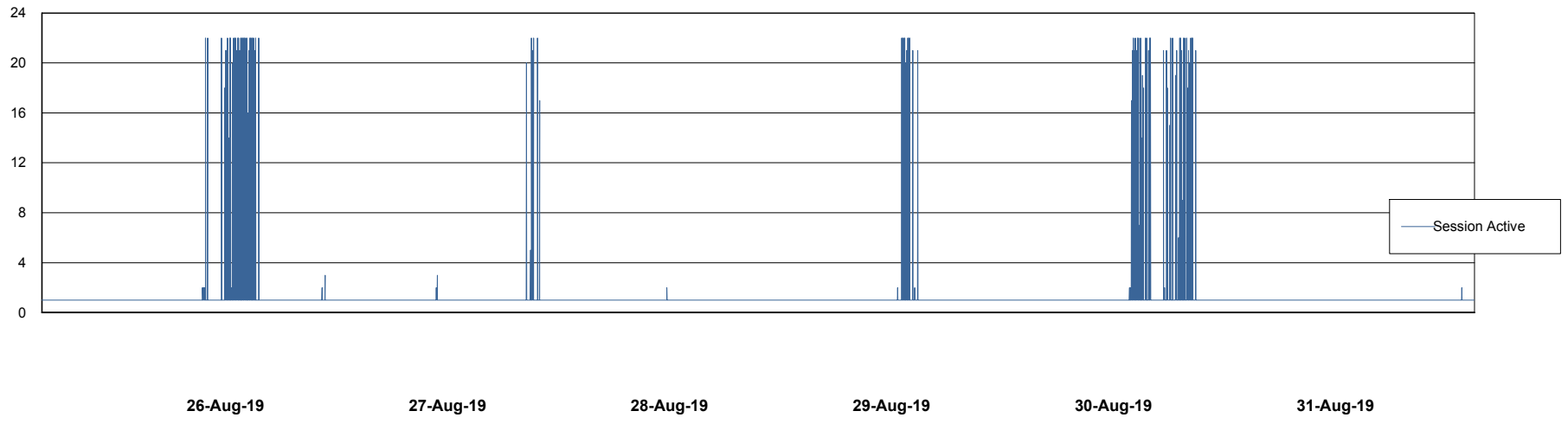
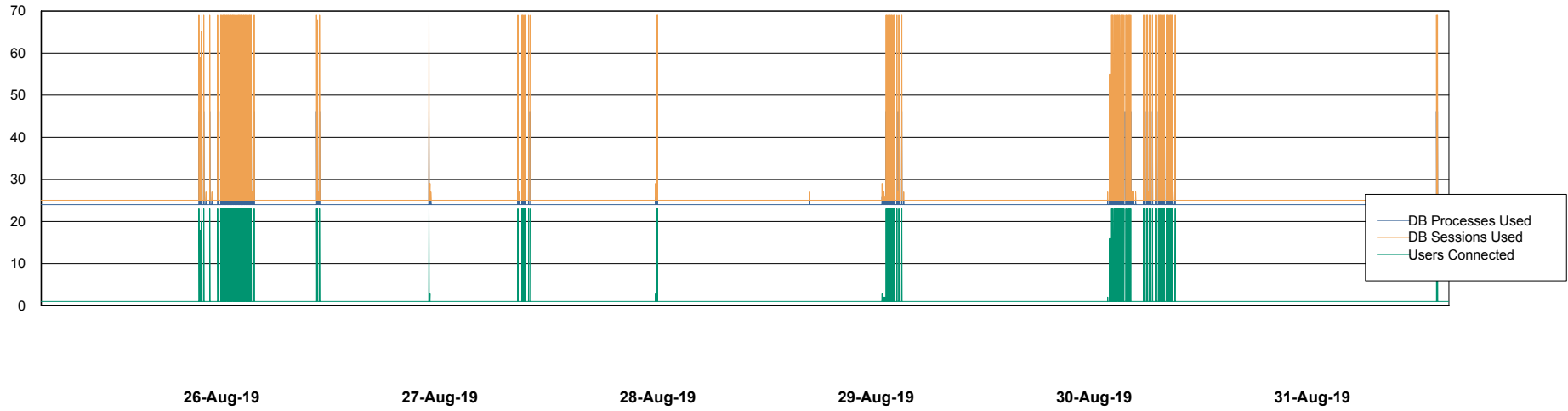


# Weekly SLA Customer Report

Customer AUJ\_Production  
Database ID 41



## Database Performance AUJ\_DB5\_Standby

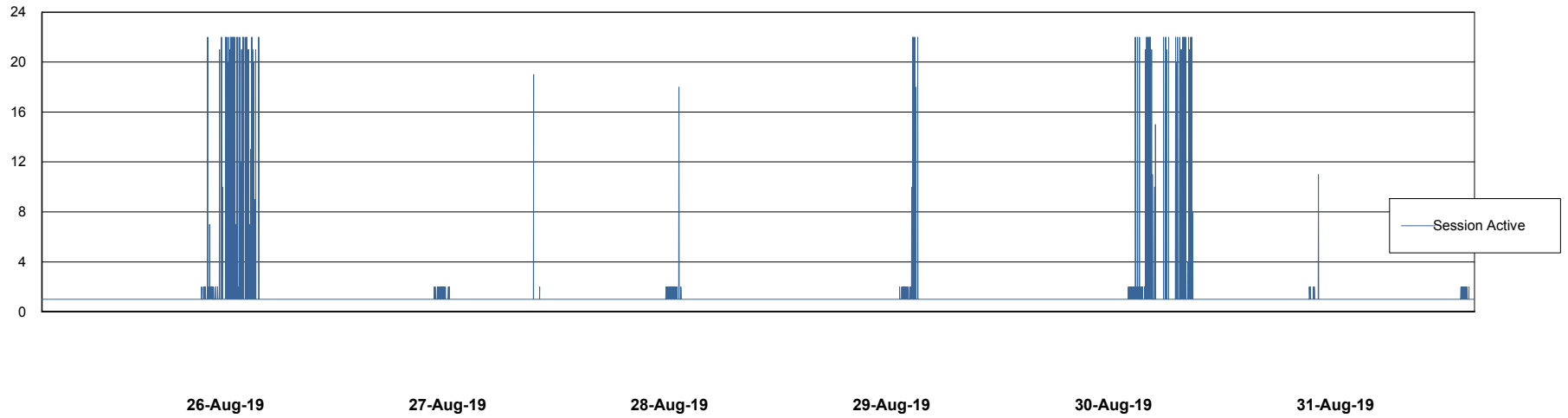
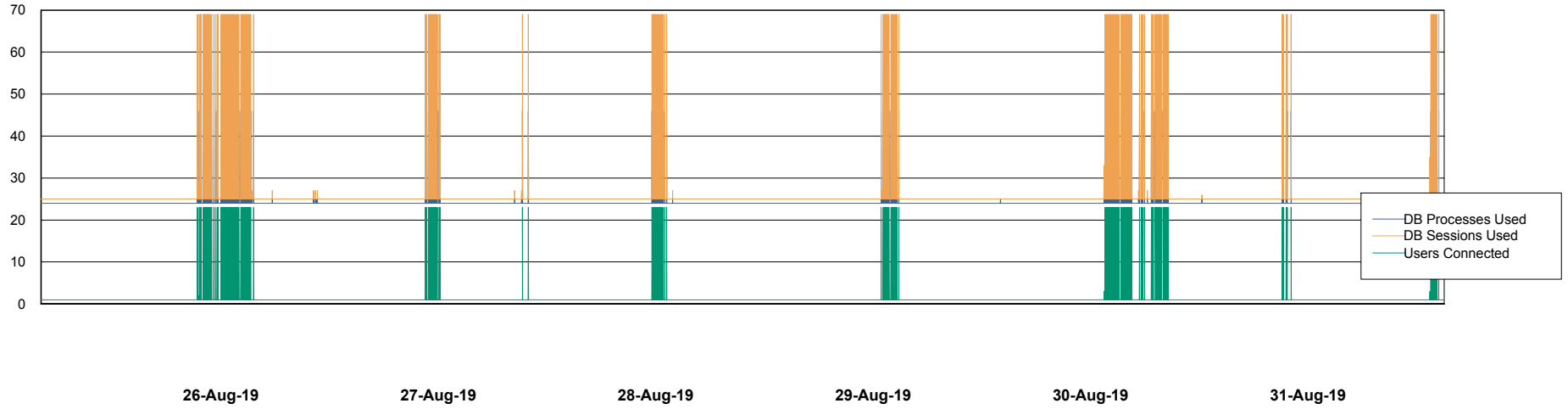


# Weekly SLA Customer Report

Customer AUJ\_Production  
Database ID 41



## Database Performance AUJ\_DB6\_Standby2

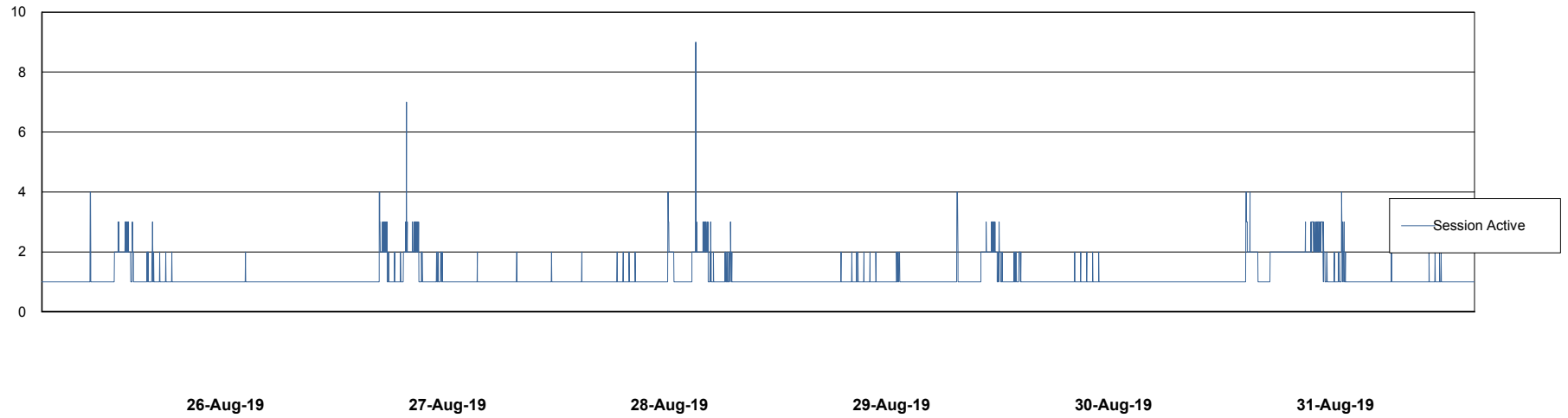
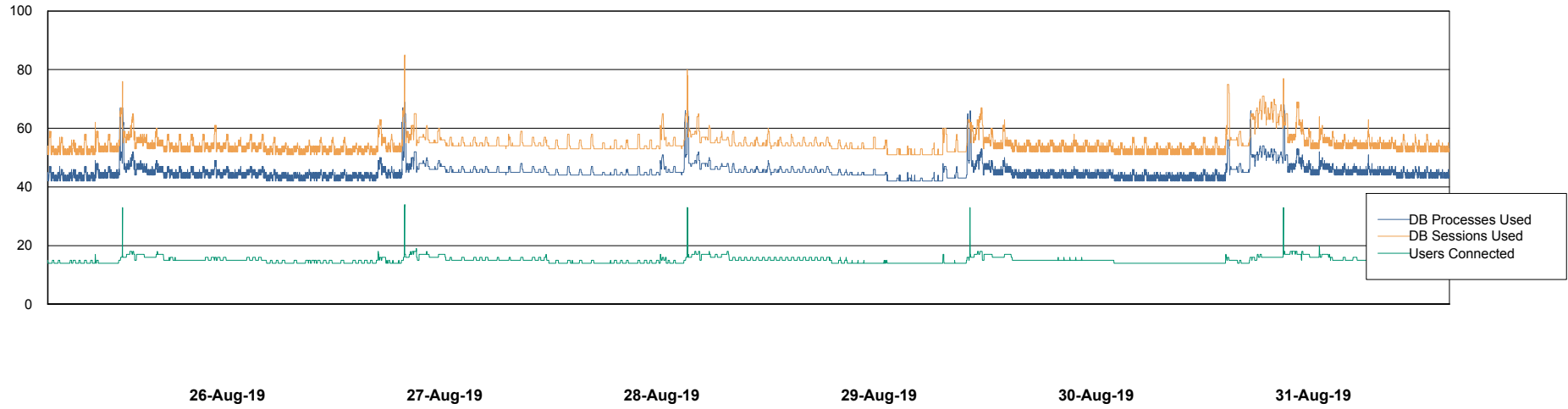


# Weekly SLA Customer Report

Customer AUJ\_Production  
Database ID 41



## Database Performance AUJDB\_BI

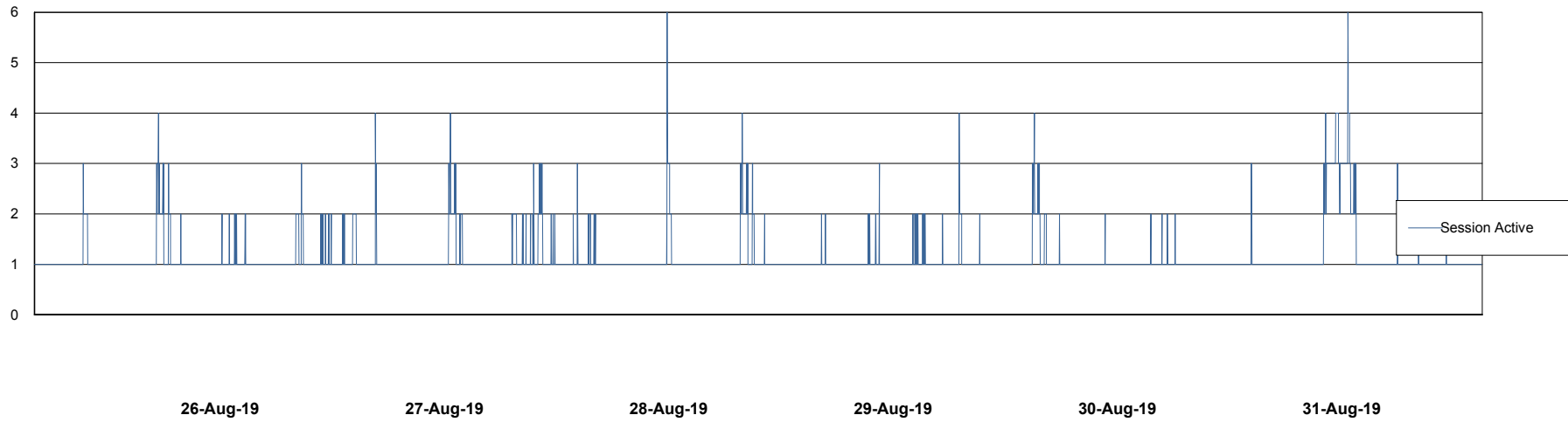
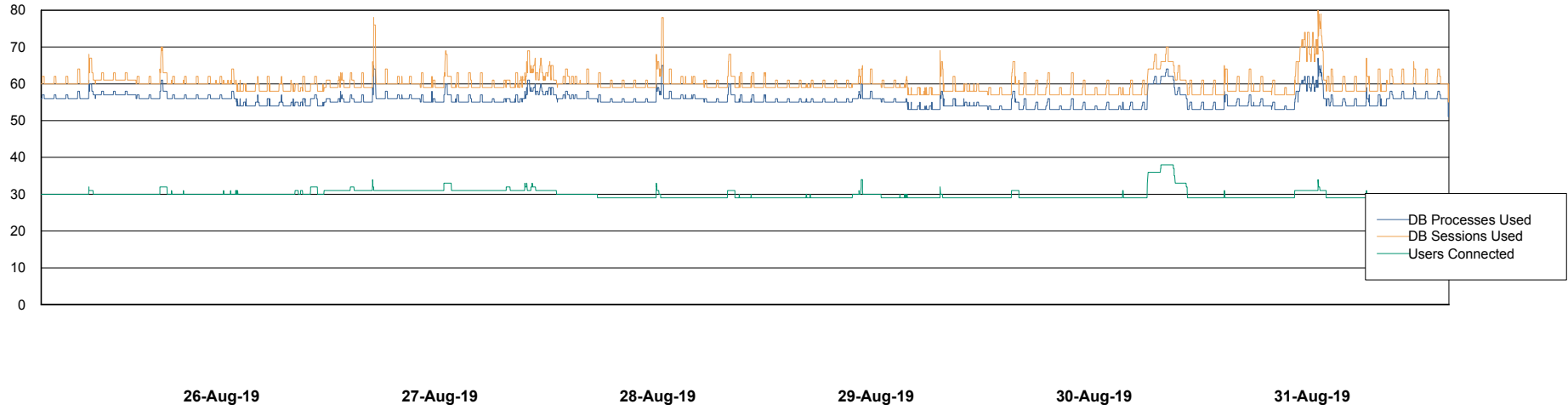


# Weekly SLA Customer Report

Customer AUJ\_Production  
Database ID 41



## Database Performance AUJDB\_BI\_TS1



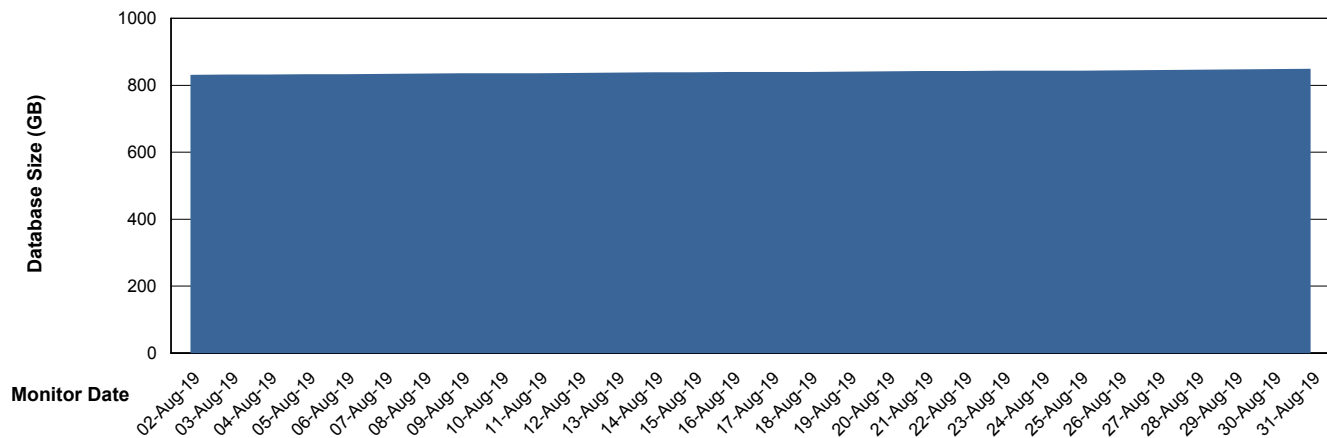
# Weekly SLA Customer Report

Customer AUJ\_Production  
Database ID 41



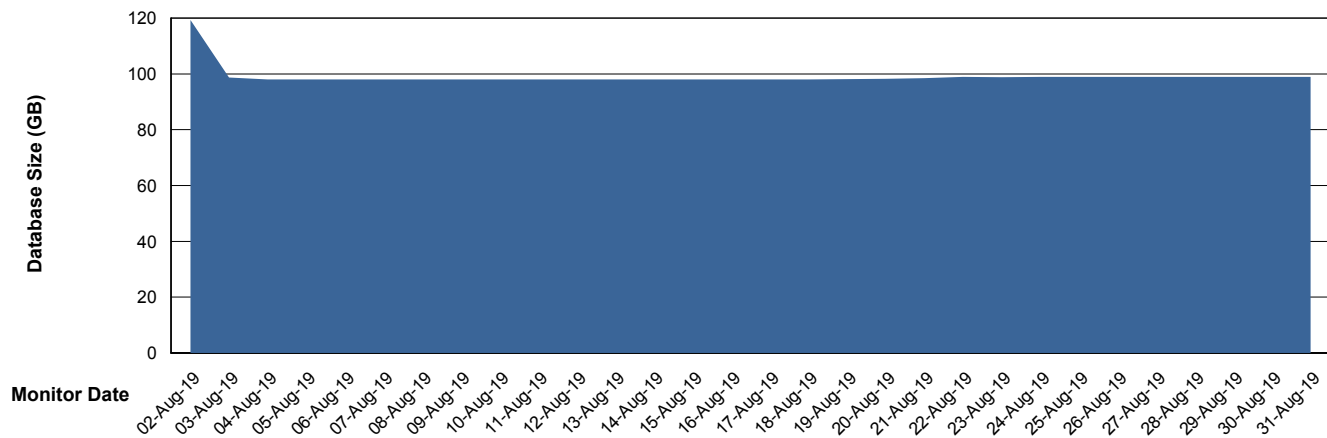
DATABASE SIZE AUJ\_DB4\_Primary

### Database growth over last month



DATABASE SIZE AUJDB\_BI

### Database growth over last month



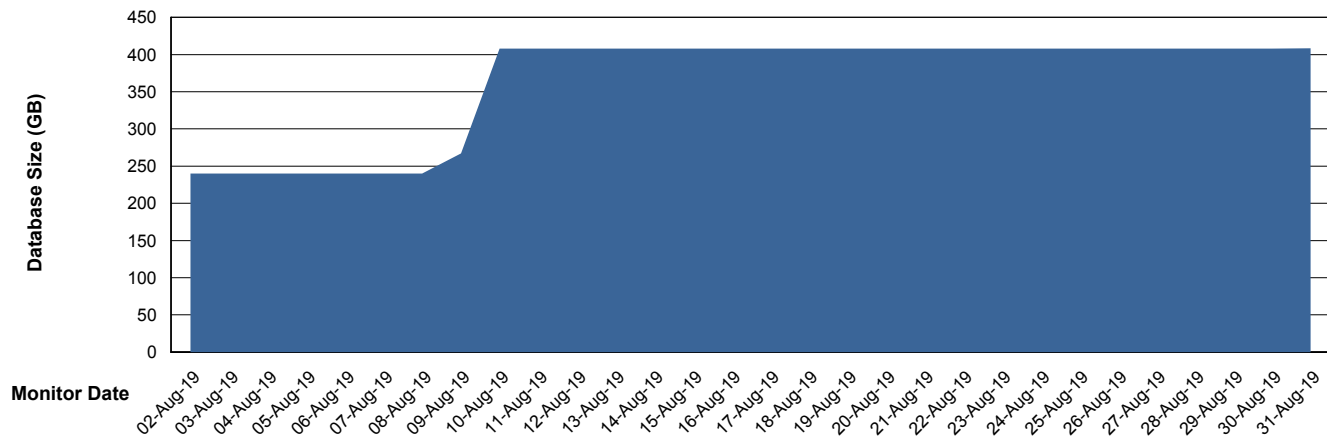
# Weekly SLA Customer Report

Customer AUJ\_Production  
Database ID 41



DATABASE SIZE AUJDB\_BI\_TS1

### Database growth over last month



# Weekly SLA Customer Report

Customer AUJ\_Production  
 Database ID 41



Database Tablespace AUJ\_DB4\_Primary

Date	Tablespace Name	Filesize (Gb)	Usedsize (Gb)	Percentage free
31-Aug-19	ABSDATA	469	358	24
	INDX	531	489	8
30-Aug-19	ABSDATA	469	358	24
	INDX	531	489	8
29-Aug-19	ABSDATA	469	358	24
	INDX	531	488	8
28-Aug-19	ABSDATA	469	358	24
	INDX	531	488	8
27-Aug-19	ABSDATA	469	357	24
	INDX	531	487	8
26-Aug-19	ABSDATA	469	357	24
	INDX	531	486	8
25-Aug-19	ABSDATA	469	356	24
	INDX	531	486	8

# Weekly SLA Customer Report

Customer AUJ\_Production  
Database ID 41



## Database Tablespace AUJDB\_BI

Date	Tablespace Name	Filesize (Gb)	Usedsize (Gb)	Percentage free
31-Aug-19	ABSDATA	113	80	29
	INDX	68	15	78
30-Aug-19	ABSDATA	113	80	29
	INDX	68	15	78
29-Aug-19	ABSDATA	113	80	29
	INDX	68	15	78
28-Aug-19	ABSDATA	113	80	29
	INDX	68	15	78
27-Aug-19	ABSDATA	113	80	29
	INDX	68	15	78
26-Aug-19	ABSDATA	113	79	30
	INDX	68	15	78
25-Aug-19	ABSDATA	113	79	30
	INDX	68	15	78

# Weekly SLA Customer Report

Customer AUJ\_Production  
 Database ID 41



Database Tablespace AUJDB\_BI\_TS1

Date	Tablespace Name	Filesize (Gb)	Usedsize (Gb)	Percentage free
31-Aug-19	ABSDATA	282	236	16
	INDX	382	168	56
30-Aug-19	ABSDATA	282	236	16
	INDX	382	168	56
29-Aug-19	ABSDATA	282	236	16
	INDX	382	168	56
28-Aug-19	ABSDATA	282	236	16
	INDX	382	168	56
27-Aug-19	ABSDATA	282	236	16
	INDX	382	168	56
26-Aug-19	ABSDATA	282	236	16
	INDX	382	168	56
25-Aug-19	ABSDATA	282	236	16
	INDX	382	168	56

BI Status and last ETL error for AUJDB\_BI

	Sun 25/8/2019	Mon 26/8/2019	Tue 27/8/2019	Wed 28/8/2019	Thu 29/8/2019	Fri 30/8/2019	Sat 31/8/2019
<b>ABS DataWarehouse ETL Health</b>	OK	OK	OK	OK	OK	OK	OK
<b>ABS DWHStaging ETL Health</b>	OK	OK	OK	OK	OK	OK	OK

BI Status and last ETL error for AUJDB\_BI\_TS1

	Sun 25/8/2019	Mon 26/8/2019	Tue 27/8/2019	Wed 28/8/2019	Thu 29/8/2019	Fri 30/8/2019	Sat 31/8/2019
<b>ABS DataWarehouse ETL Health</b>	OK	OK	OK	OK	OK	OK	Not OK
<b>ABS DWHStaging ETL Health</b>	OK	OK	OK	OK	OK	OK	OK

BI last ETL error for AUJDB\_BI\_TS1

Sat, 31-08-2019 ORA-01722: invalid number

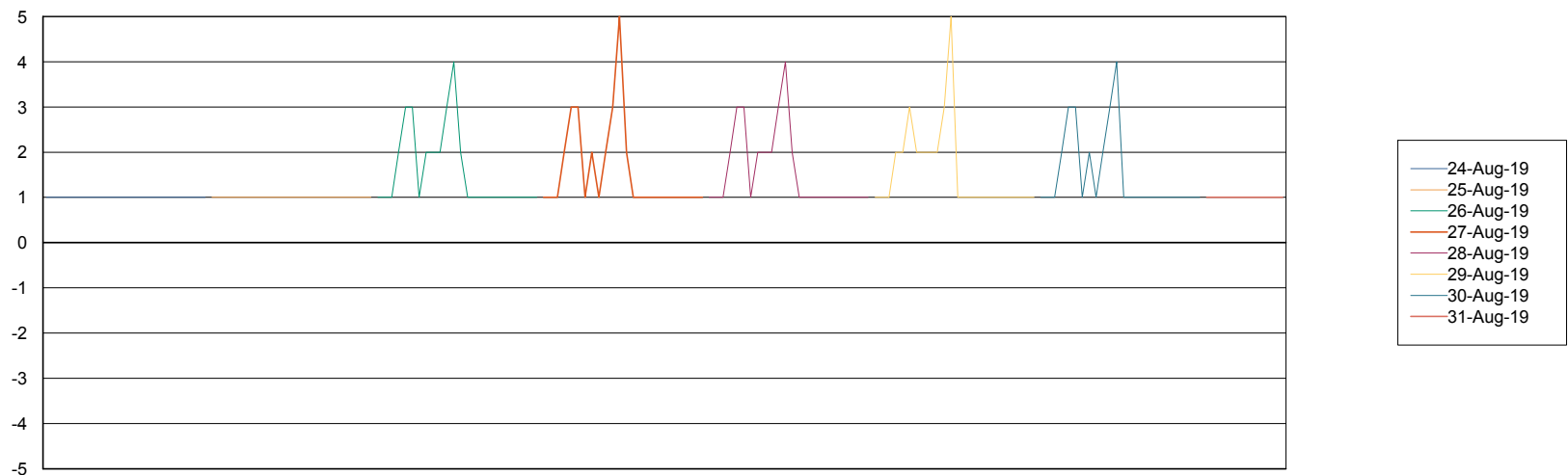
# Weekly SLA Customer Report

Customer AUJ\_Production  
Database ID 41



Standby Database Health AUJ\_Production

### Recovery lag for last 7 days



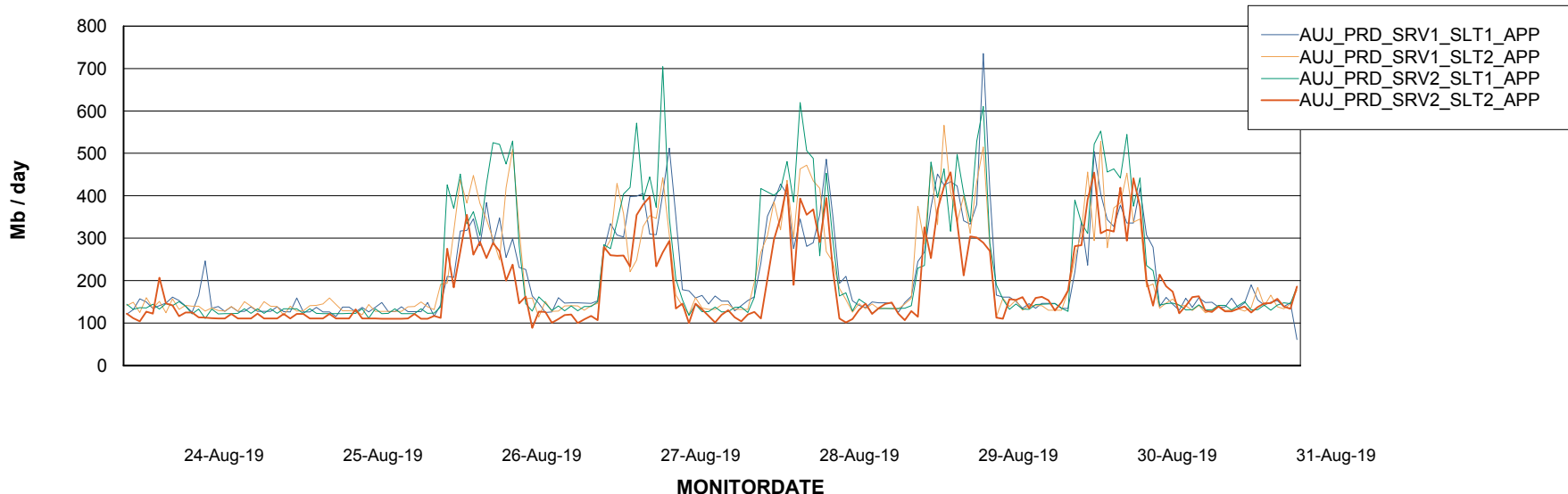
# Weekly SLA Customer Report

Customer AUJ\_Production  
Database ID 41

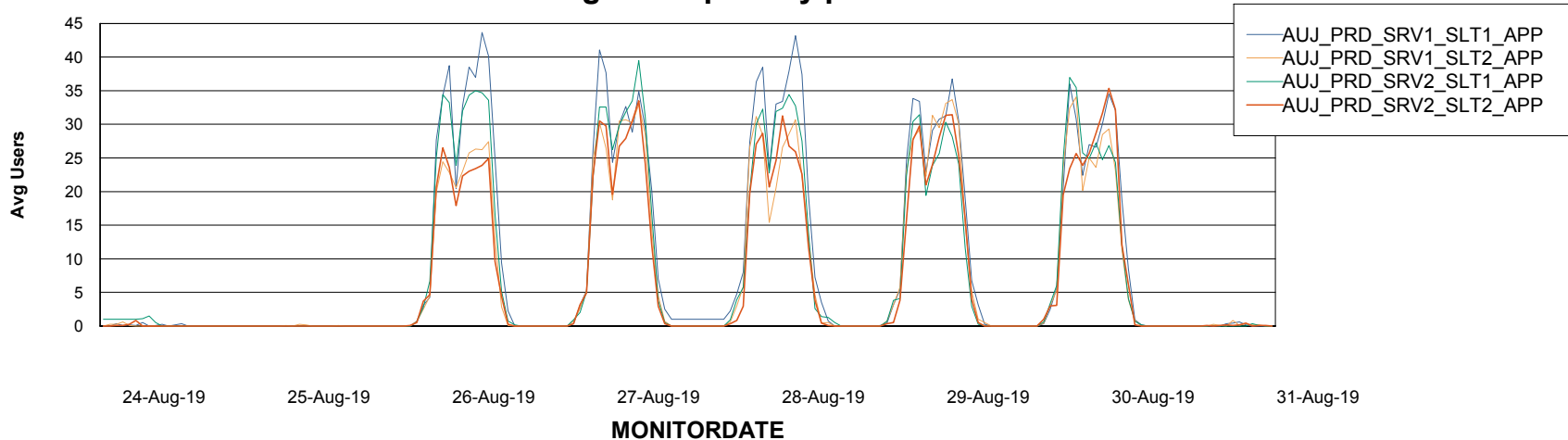


## ABSSolute Application Server Services

### Avg memory used per ABS Server Service



### Avg users per day per ABS server



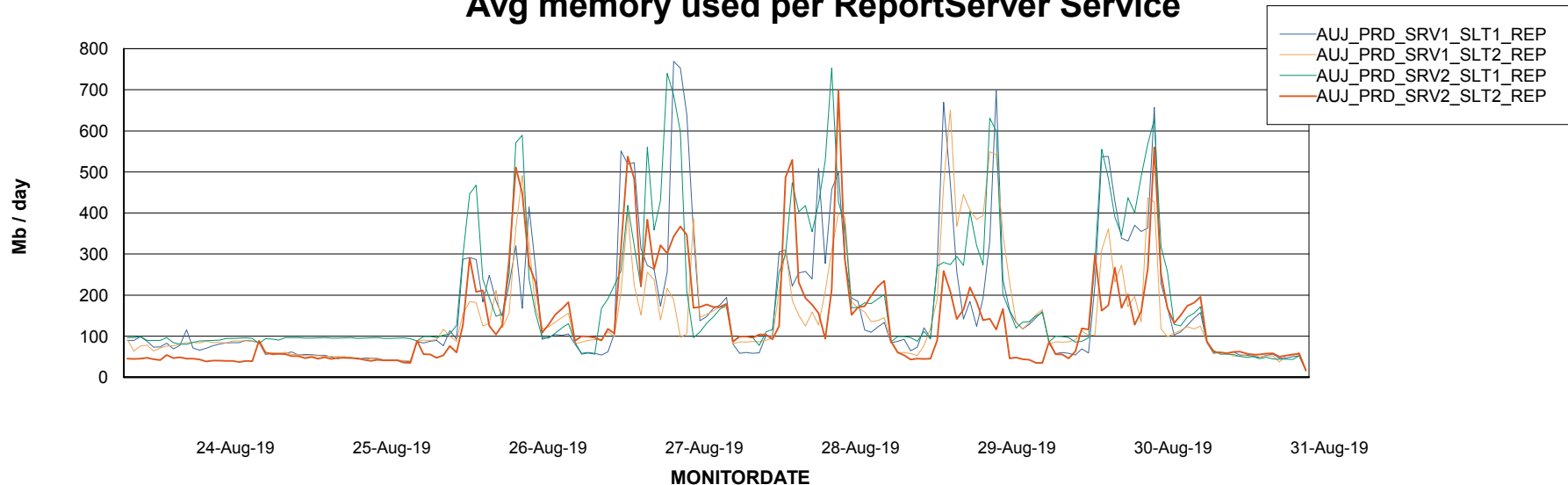
# Weekly SLA Customer Report

Customer AUJ\_Production  
Database ID 41



## ABSSolute Application ReportServer Services

### Avg memory used per ReportServer Service



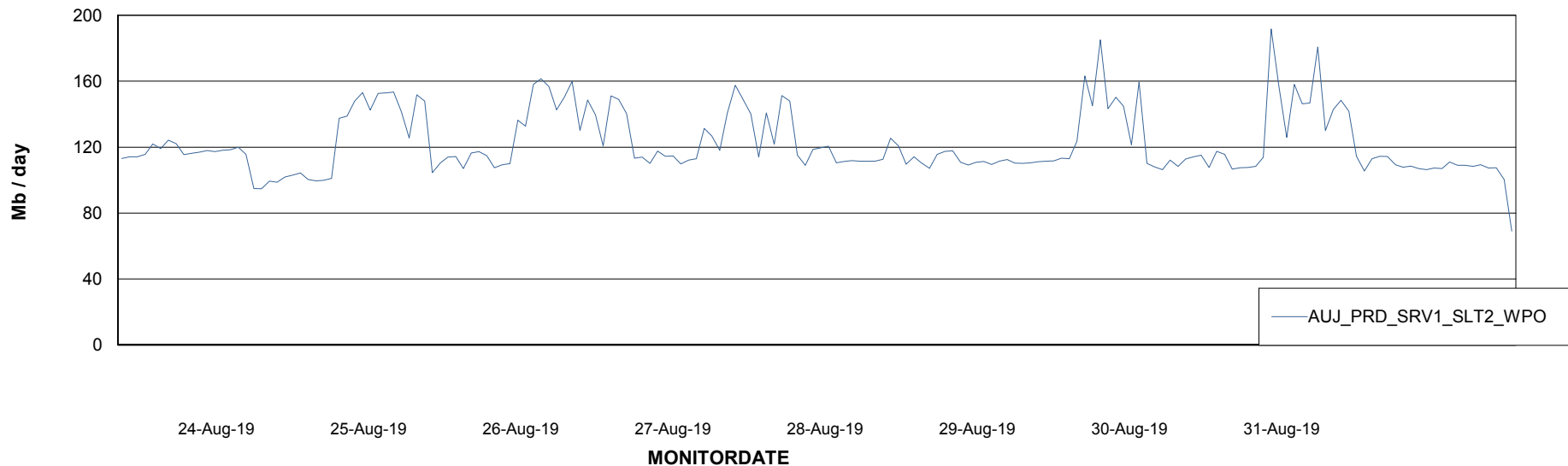
# Weekly SLA Customer Report

Customer AUJ\_Production  
Database ID 41



## ABSolute Web Component Services

### Avg memory used per ABS Web component



# Weekly SLA Customer Report

Customer AUJ\_Production  
Database ID 41



### Disaster per ABS component

