

# Weekly SLA Customer Report

Customer CUS Production  
Database ID 84



## Harddisk Usage CUS\_ABSBI

	Free disk space on c: (%)	Total disk space on c: (Gb)	Free disk space on d: (%)	Total disk space on d: (Gb)
10-Aug-19	78	199	78	800
09-Aug-19	78	199	78	800
08-Aug-19	78	199	79	800
07-Aug-19	78	199	79	800
06-Aug-19	78	199	79	800
05-Aug-19	78	199	79	800
04-Aug-19	78	199	80	800

## Harddisk Usage CUS\_ABSPROD1

	Free disk space on c: (%)	Total disk space on c: (Gb)
10-Aug-19	36	199
09-Aug-19	36	199
08-Aug-19	36	199
07-Aug-19	36	199
06-Aug-19	36	199
05-Aug-19	36	199
04-Aug-19	36	199

# Weekly SLA Customer Report

Customer CUS Production  
Database ID 84



## Harddisk Usage CUS\_ABSPROD2

	Free disk space on c: (%)	Total disk space on c: (Gb)
10-Aug-19	36	199
09-Aug-19	36	199
08-Aug-19	36	199
07-Aug-19	36	199
06-Aug-19	37	199
05-Aug-19	37	199
04-Aug-19	37	199

## Harddisk Usage CUS\_ABSWEBPROD

	Free disk space on c: (%)	Total disk space on c: (Gb)
10-Aug-19	86	199
09-Aug-19	86	199
08-Aug-19	86	199
07-Aug-19	86	199
06-Aug-19	86	199
05-Aug-19	86	199
04-Aug-19	86	199

# Weekly SLA Customer Report

Customer CUS Production  
Database ID 84



## Harddisk Usage CUS\_PrimaryDBSrv\_ABSDB1

	Free disk space on c: (%)	Total disk space on c: (Gb)	Free disk space on d: (%)	Total disk space on d: (Gb)
10-Aug-19	83	199	63	1,024
09-Aug-19	83	199	63	1,024
08-Aug-19	83	199	63	1,024
07-Aug-19	83	199	63	1,024
06-Aug-19	83	199	63	1,024
05-Aug-19	83	199	64	1,024
04-Aug-19	83	199	68	1,024

## Harddisk Usage CUS\_StandByDBSrv\_ABSDB2

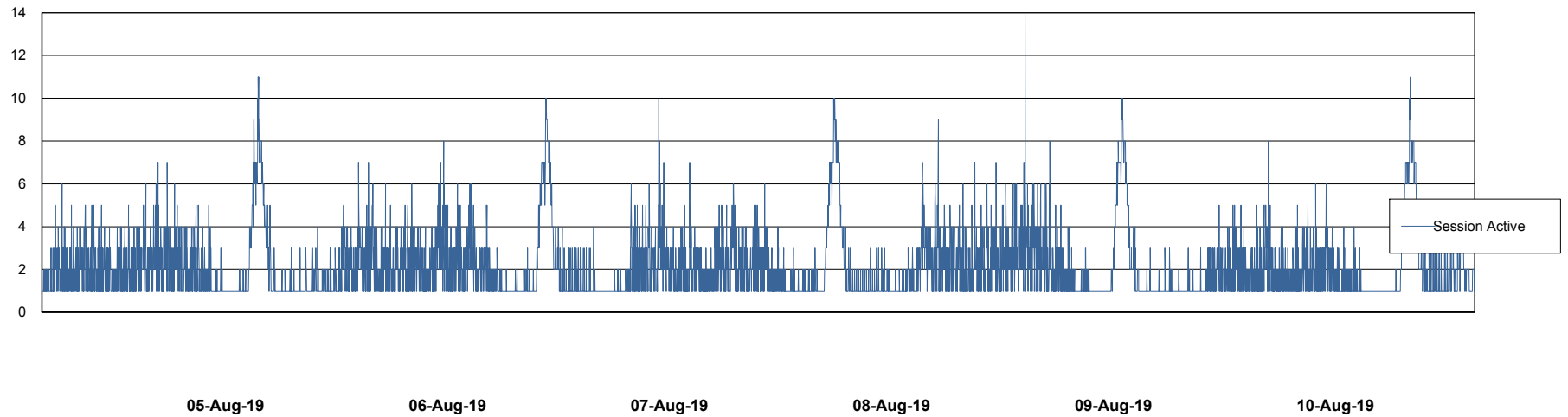
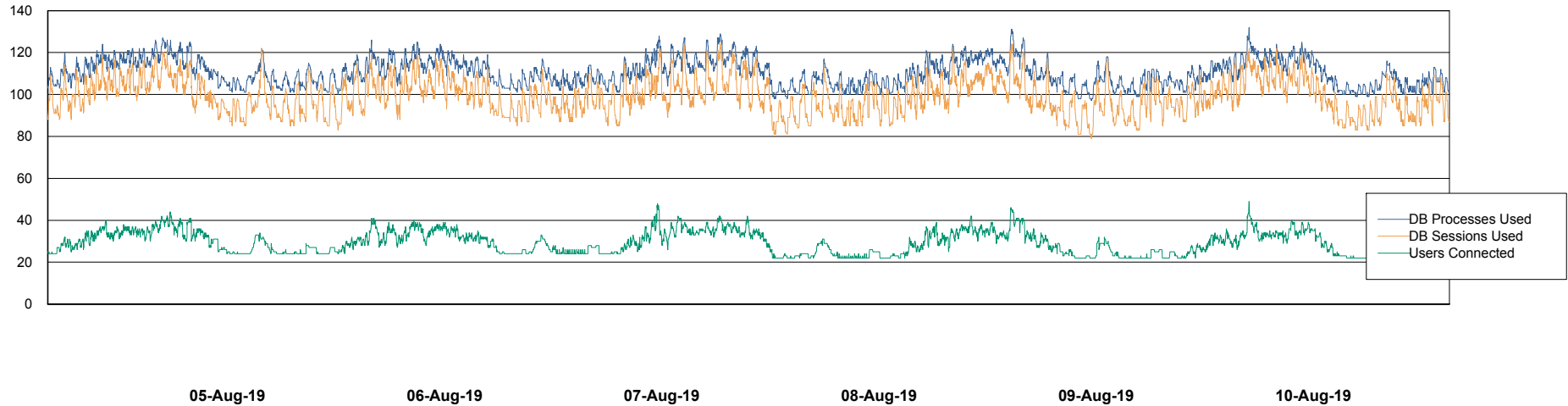
	Free disk space on c: (%)	Total disk space on c: (Gb)	Free disk space on d: (%)	Total disk space on d: (Gb)
10-Aug-19	86	199	71	1,024
09-Aug-19	86	199	71	1,024
08-Aug-19	86	199	71	1,024
07-Aug-19	86	199	71	1,024
06-Aug-19	86	199	71	1,024
05-Aug-19	86	199	72	1,024
04-Aug-19	86	199	75	1,024

# Weekly SLA Customer Report

Customer CUS Production  
Database ID 84



## Database Performance CUS\_ProdDB\_Primary

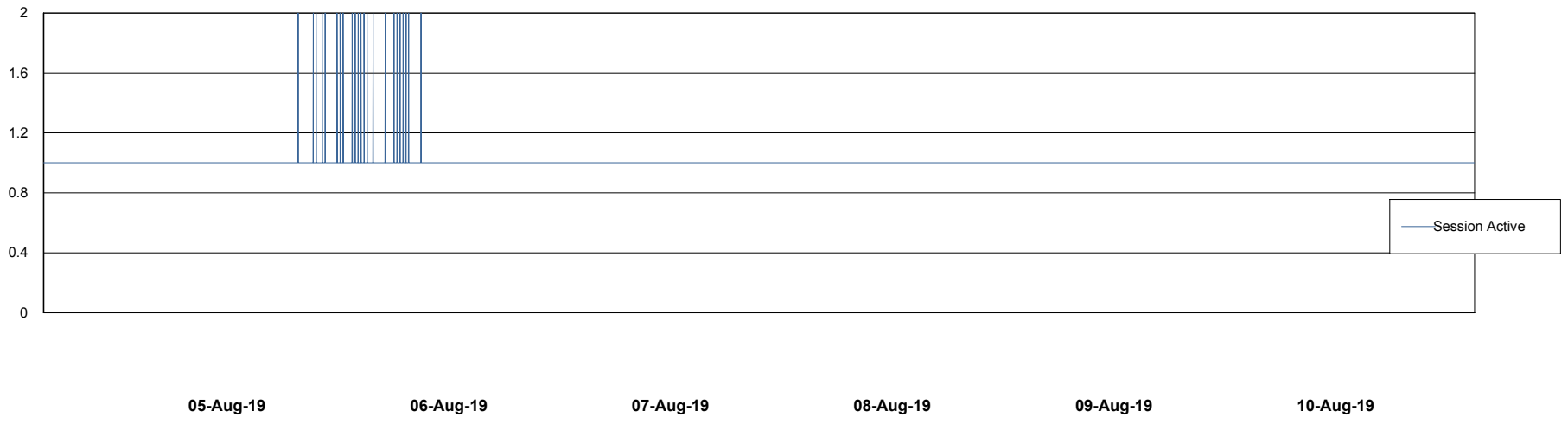
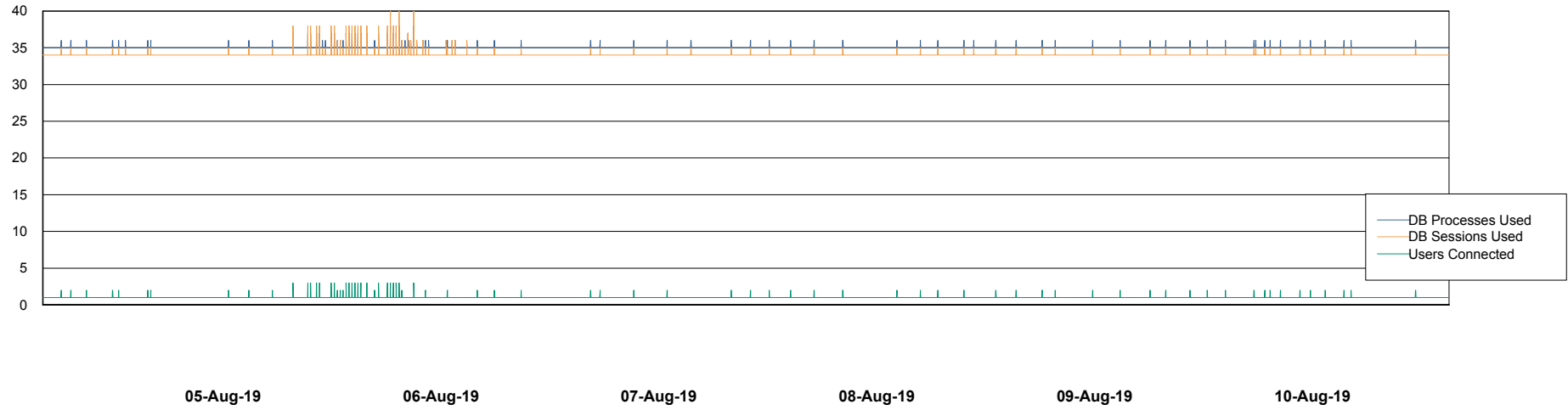


# Weekly SLA Customer Report

Customer CUS Production  
Database ID 84



## Database Performance CUS\_ProdDB\_Standby



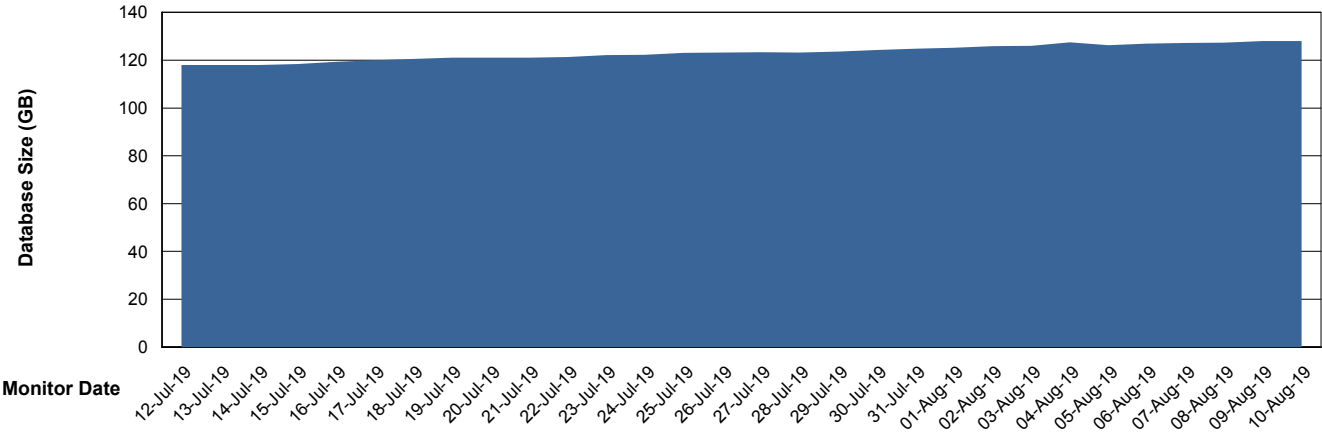
# Weekly SLA Customer Report

Customer CUS Production  
 Database ID 84



DATABASE SIZE CUS\_ProdDB\_Primary

Database growth over last month



Database Tablespace CUS\_ProdDB\_Primary

Date	Tablespace Name	Filesize (Gb)	Usedsize (Gb)	Percentage free
10-Aug-19	ABSDATA	140	115	18
	INDX	80	4	95
09-Aug-19	ABSDATA	140	115	18
	INDX	80	4	95
08-Aug-19	ABSDATA	140	115	18
	INDX	80	4	95
07-Aug-19	ABSDATA	140	114	19
	INDX	80	4	95
06-Aug-19	ABSDATA	140	114	19
	INDX	80	4	95
05-Aug-19	ABSDATA	140	114	19
	INDX	80	4	95
04-Aug-19	ABSDATA	130	113	13
	INDX	80	4	95

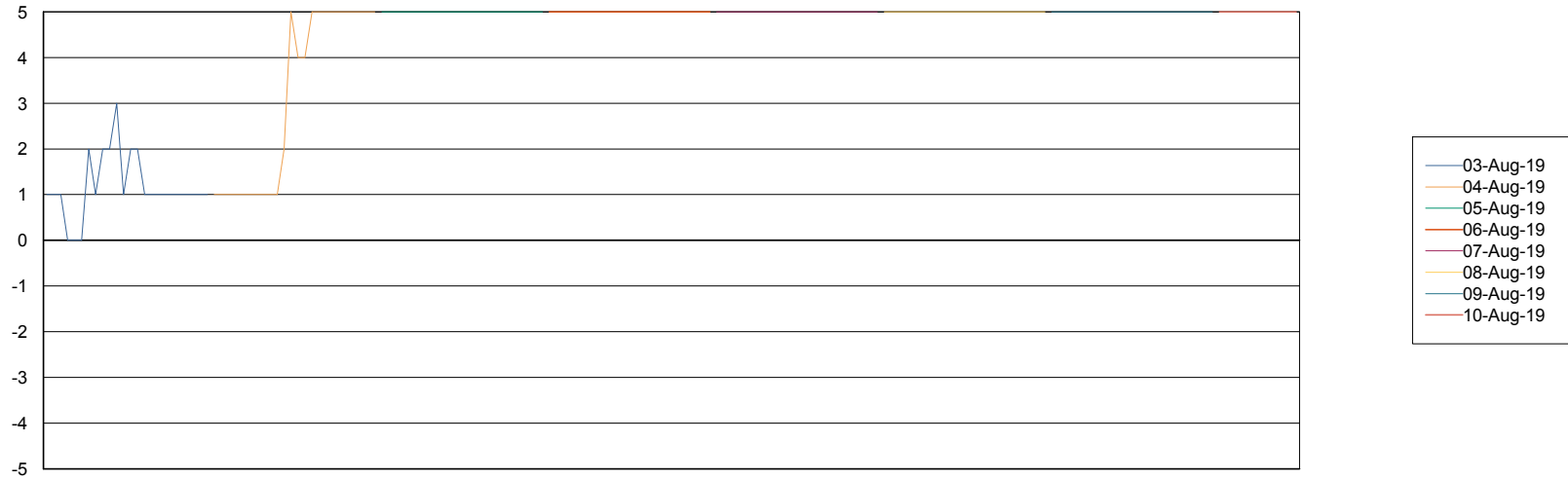
# Weekly SLA Customer Report

Customer CUS Production  
Database ID 84



Standby Database Health CUS Production

### Recovery lag for last 7 days



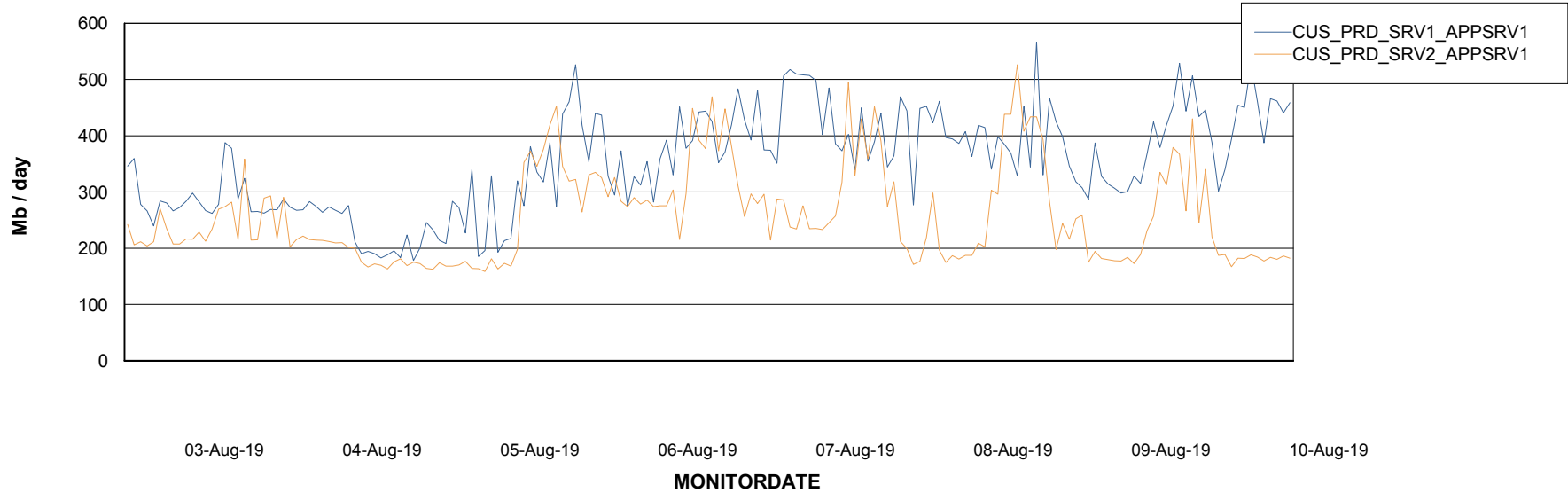
# Weekly SLA Customer Report

Customer CUS Production  
Database ID 84

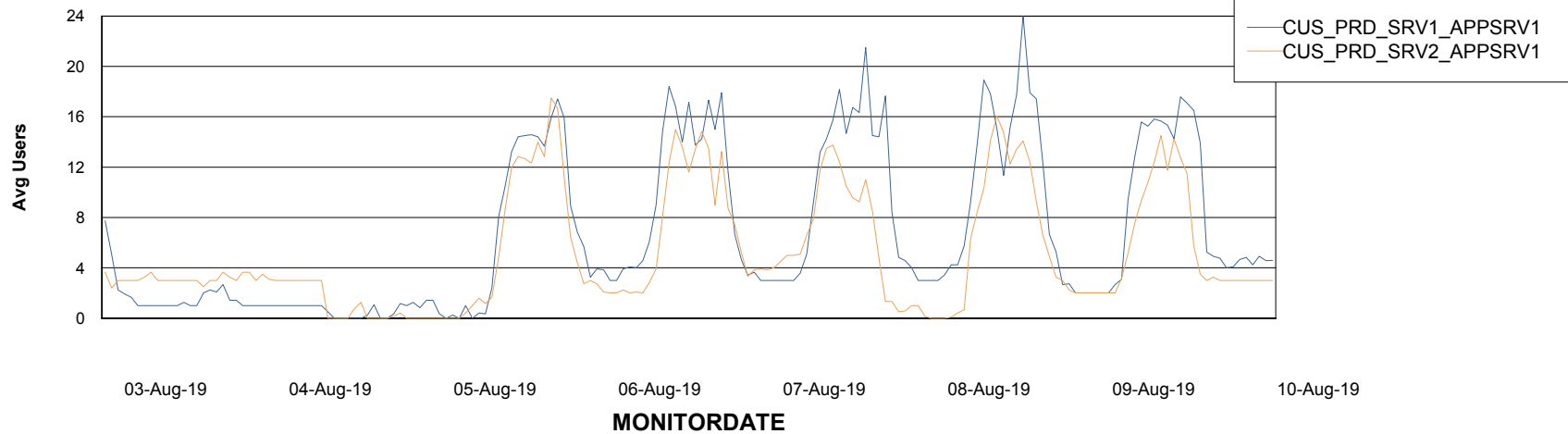


## ABSolute Application Server Services

### Avg memory used per ABS Server Service



### Avg users per day per ABS server



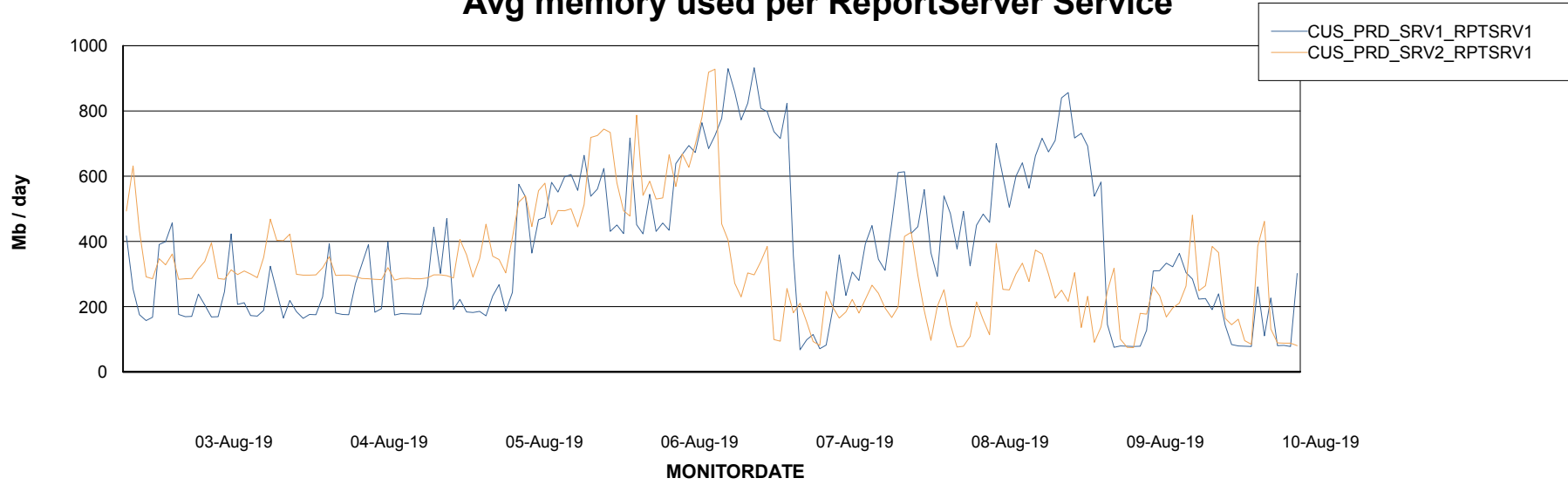
# Weekly SLA Customer Report

Customer CUS Production  
Database ID 84



## ABSSolute Web Component Services

### Avg memory used per ReportServer Service



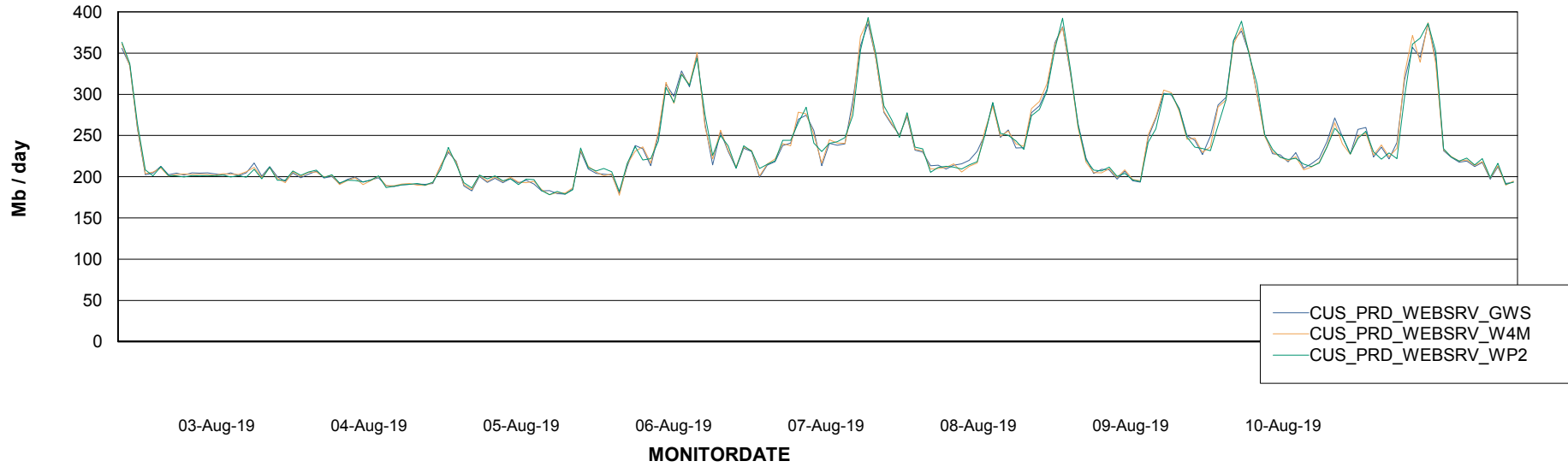
# Weekly SLA Customer Report

Customer CUS Production  
Database ID 84



## ABSSolute Web Component Services

### Avg memory used per ABS Web component



# Weekly SLA Customer Report

Customer CUS Production  
Database ID 84



### Disaster per ABS component

