

# Weekly SLA Customer Report

Customer CUS Production  
Database ID 84



## Harddisk Usage CUS\_ABSBI

	Free disk space on c: (%)	Total disk space on c: (Gb)	Free disk space on d: (%)	Total disk space on d: (Gb)
16-Mar-19	78	199	51	800
15-Mar-19	78	199	52	800
14-Mar-19	78	199	52	800
13-Mar-19	78	199	52	800
12-Mar-19	79	199	52	800
11-Mar-19	79	199	52	800
10-Mar-19	79	199	53	800

## Harddisk Usage CUS\_ABSPROD1

	Free disk space on c: (%)	Total disk space on c: (Gb)
16-Mar-19	26	199
15-Mar-19	26	199
14-Mar-19	26	199
13-Mar-19	26	199
12-Mar-19	29	199
11-Mar-19	30	199
10-Mar-19	30	199

# Weekly SLA Customer Report

Customer CUS Production  
Database ID 84



## Harddisk Usage CUS\_ABSPROD2

	Free disk space on c: (%)	Total disk space on c: (Gb)
16-Mar-19	70	199
15-Mar-19	70	199
14-Mar-19	71	199
13-Mar-19	71	199
12-Mar-19	71	199
11-Mar-19	71	199
10-Mar-19	71	199

## Harddisk Usage CUS\_ABSWEBPROD

	Free disk space on c: (%)	Total disk space on c: (Gb)
16-Mar-19	86	199
15-Mar-19	86	199
14-Mar-19	86	199
13-Mar-19	86	199
12-Mar-19	86	199
11-Mar-19	86	199
10-Mar-19	86	199

# Weekly SLA Customer Report

Customer CUS Production  
Database ID 84



## Harddisk Usage CUS\_PrimaryDBSrv\_ABSDB1

	Free disk space on c: (%)	Total disk space on c: (Gb)	Free disk space on d: (%)	Total disk space on d: (Gb)
16-Mar-19	83	199	71	1,024
15-Mar-19	83	199	71	1,024
14-Mar-19	83	199	71	1,024
13-Mar-19	84	199	71	1,024
12-Mar-19	84	199	66	1,024
11-Mar-19	84	199	64	1,024
10-Mar-19	84	199	65	1,024

## Harddisk Usage CUS\_StandByDBSrv\_ABSDB2

	Free disk space on c: (%)	Total disk space on c: (Gb)	Free disk space on d: (%)	Total disk space on d: (Gb)
16-Mar-19	86	199	81	1,024
15-Mar-19	86	199	81	1,024
14-Mar-19	86	199	81	1,024
13-Mar-19	86	199	81	1,024
12-Mar-19	86	199	82	1,024
11-Mar-19	86	199	82	1,024
10-Mar-19	86	199	82	1,024

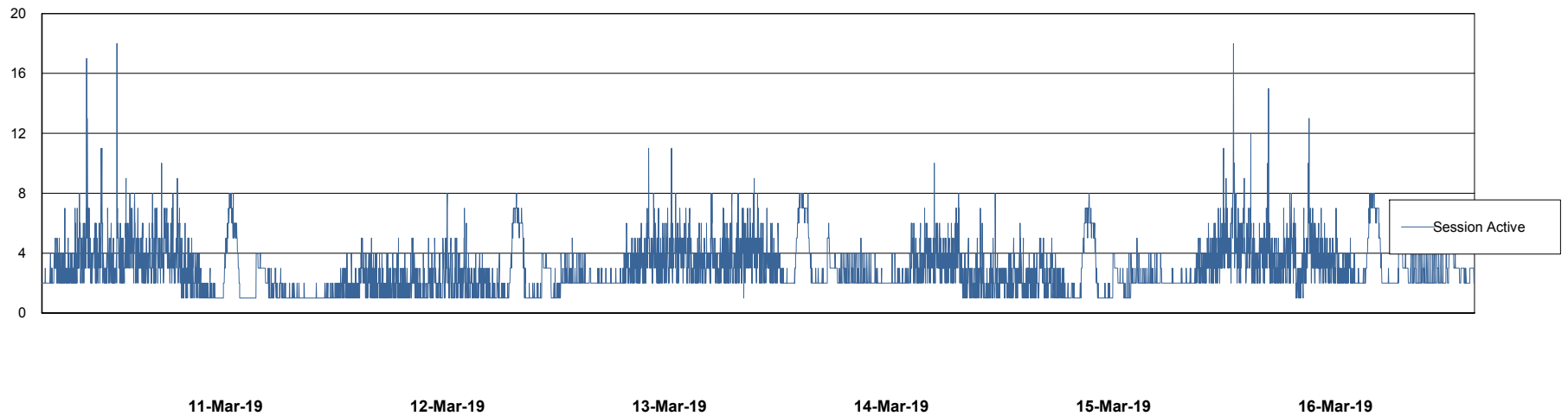
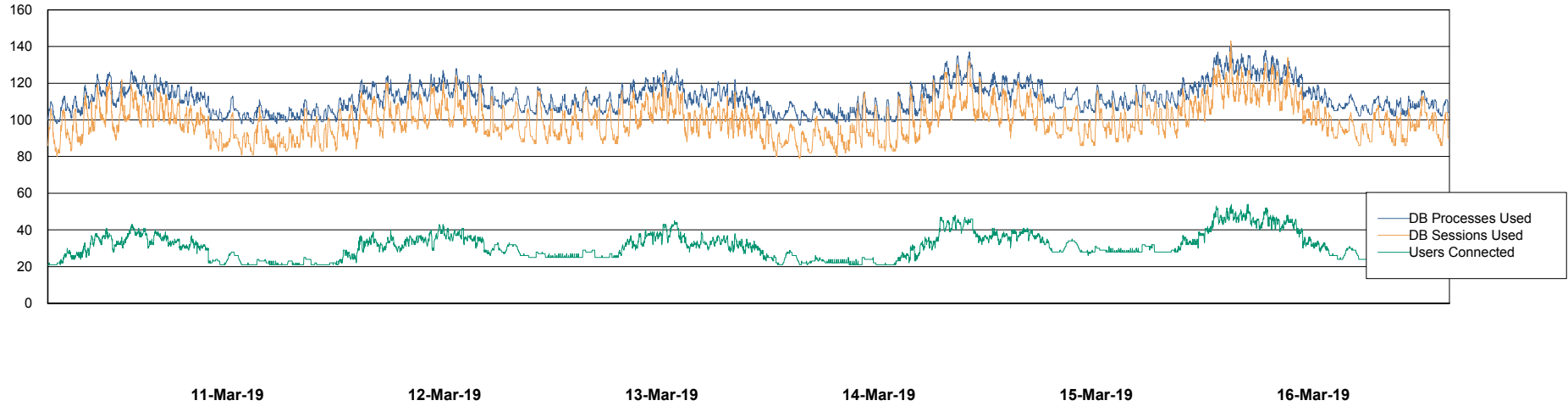
# Weekly SLA Customer Report

Customer CUS Production  
Database ID 84



## Database Performance CUS\_ProdDB\_Primary

DB Processes Max 300  
DB Sessions Max 472



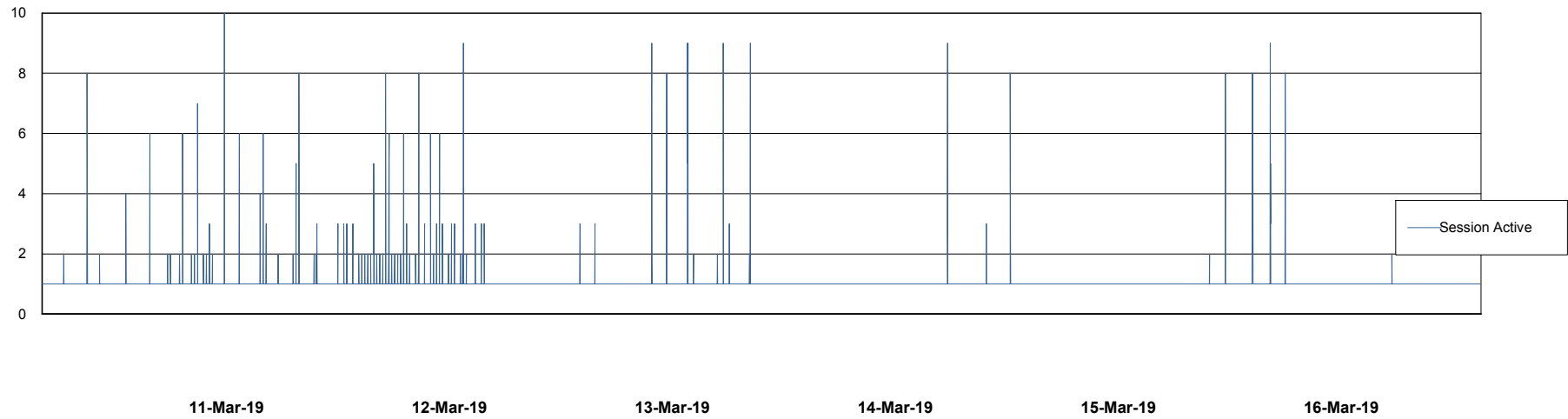
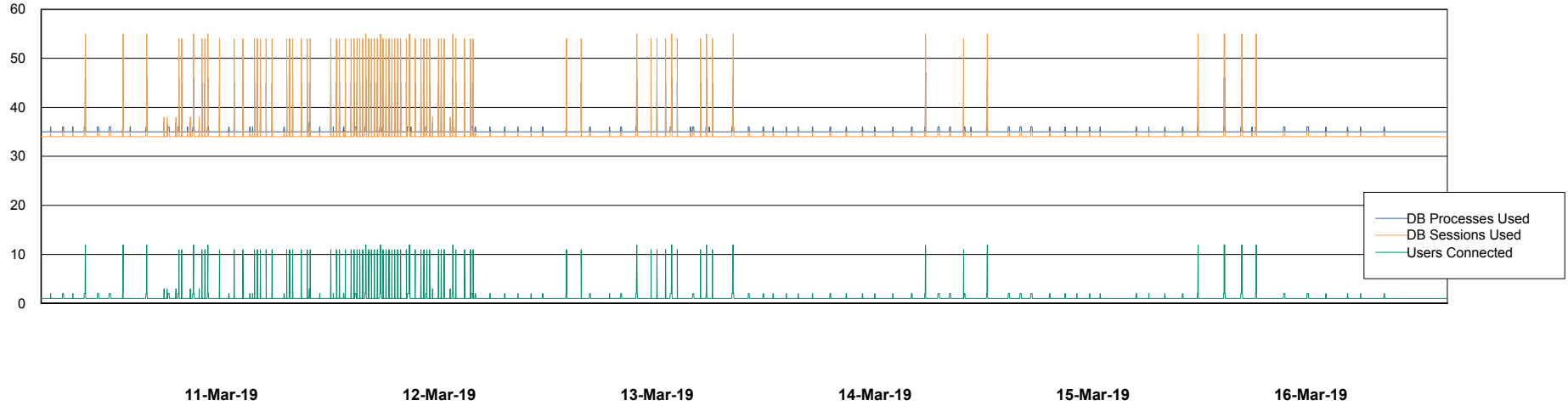
# Weekly SLA Customer Report

Customer CUS Production  
Database ID 84



## Database Performance CUS\_ProdDB\_Standby

DB Processes Max 300  
DB Sessions Max 472



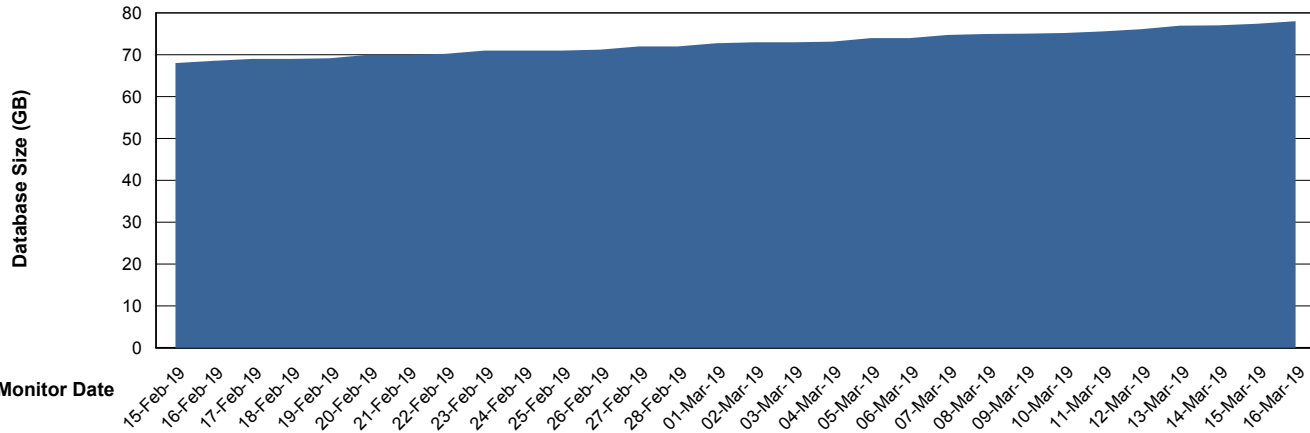
# Weekly SLA Customer Report

Customer CUS Production  
 Database ID 84



DATABASE SIZE CUS\_ProdDB\_Primary

Database growth over last month



Database Tablespace CUS\_ProdDB\_Primary

Date	Tablespace Name	Filesize (Gb)	Usedsize (Gb)	Percentage free
16-Mar-19	ABSDATA	80	68	15
	INDX	4	4	0
15-Mar-19	ABSDATA	80	68	15
	INDX	4	4	0
14-Mar-19	ABSDATA	80	67	16
	INDX	4	3	25
13-Mar-19	ABSDATA	80	66	18
	INDX	4	3	25
12-Mar-19	ABSDATA	80	66	18
	INDX	4	1	75
11-Mar-19	ABSDATA	80	66	18
	INDX	4	1	75
10-Mar-19	ABSDATA	80	66	18
	INDX	4	1	75

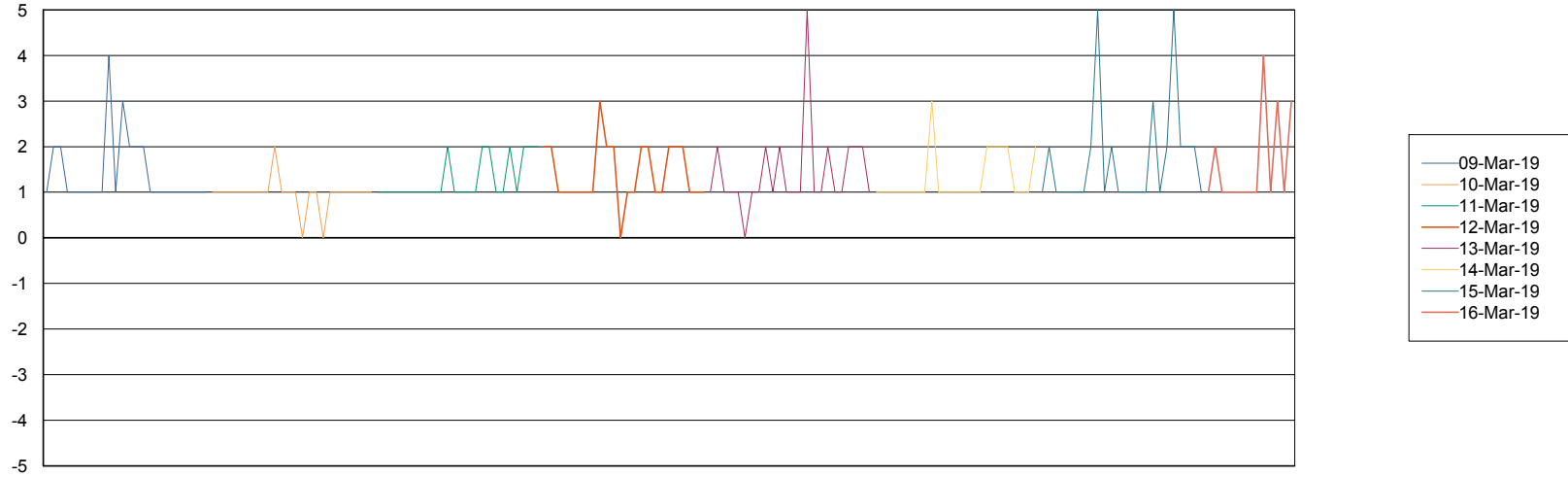
# Weekly SLA Customer Report

Customer CUS Production  
Database ID 84



Standby Database Health CUS Production

### Recovery lag for last 7 days



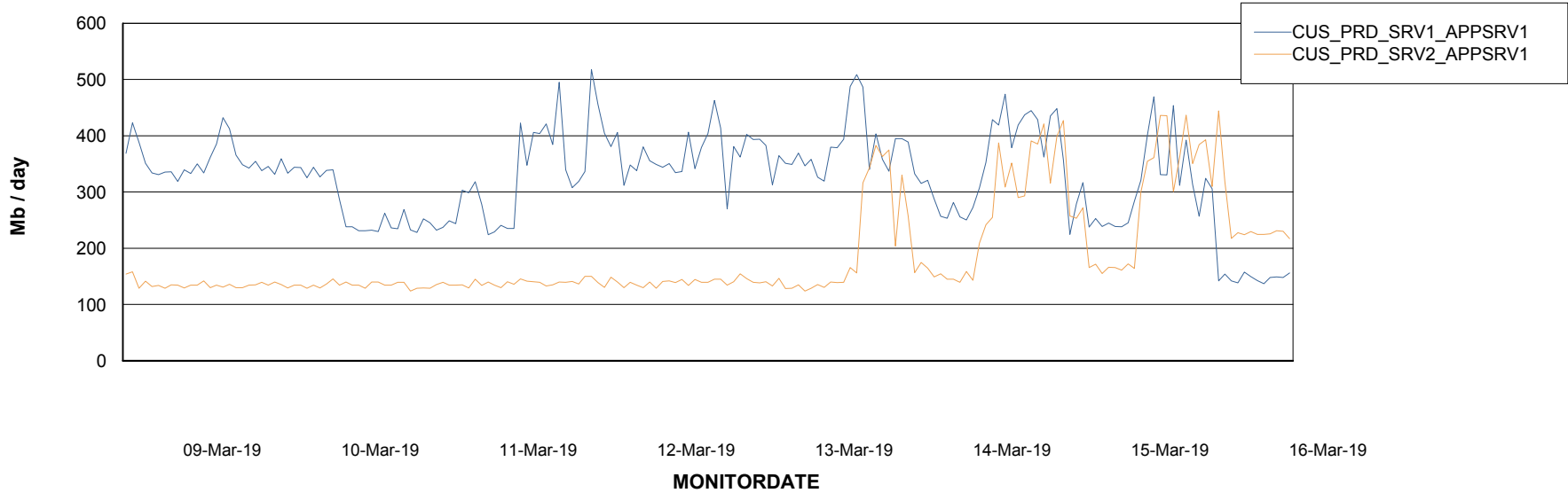
# Weekly SLA Customer Report

Customer CUS Production  
Database ID 84

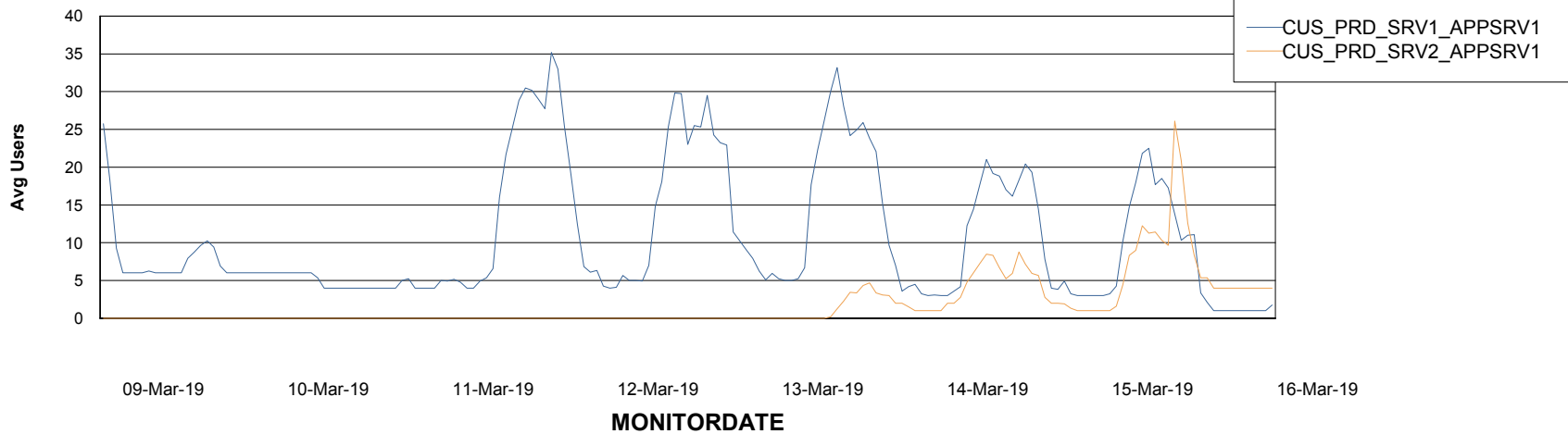


## ABSSolute Application Server Services

### Avg memory used per ABS Server Service



### Avg users per day per ABS server



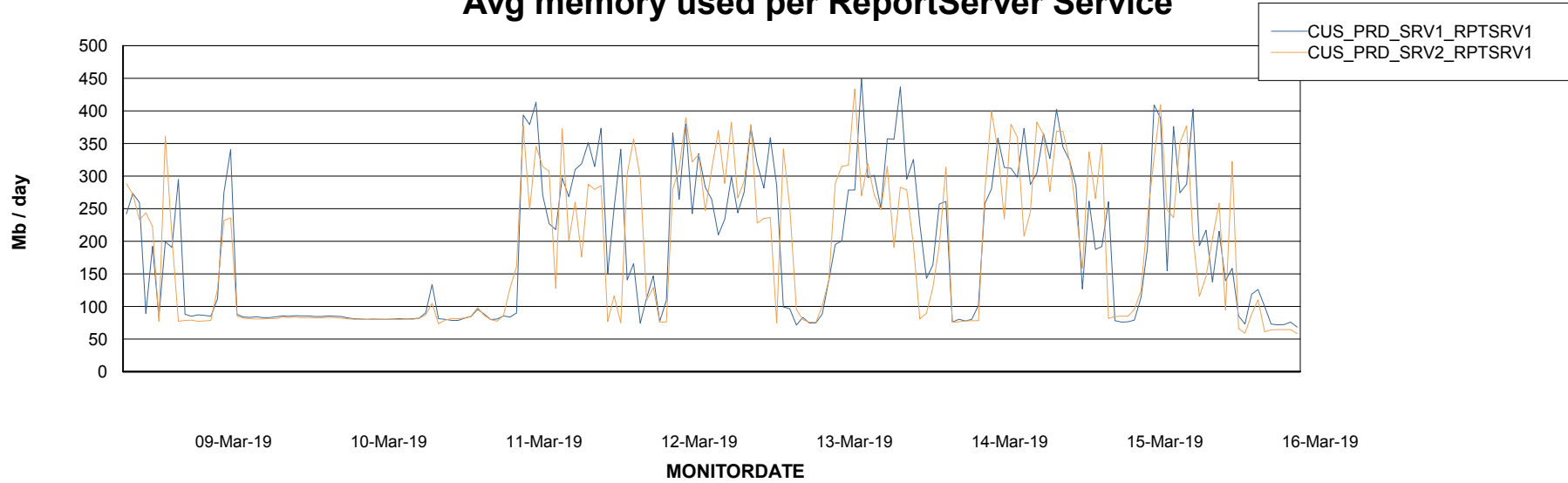
# Weekly SLA Customer Report

Customer CUS Production  
Database ID 84



## ABSSolute Web Component Services

### Avg memory used per ReportServer Service



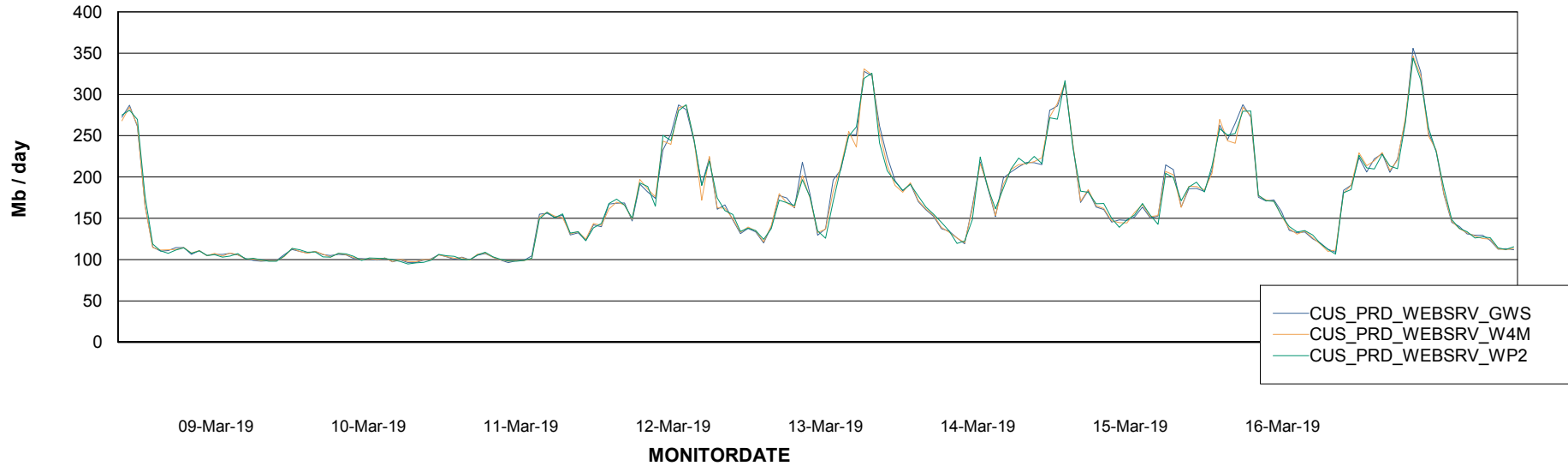
# Weekly SLA Customer Report

Customer CUS Production  
Database ID 84



## ABSolute Web Component Services

### Avg memory used per ABS Web component



# Weekly SLA Customer Report

Customer CUS Production  
Database ID 84



## Disaster per ABS component

