

# Weekly SLA Customer Report

Customer CSC\_Production  
Database ID 50



## Harddisk Usage CSC\_PRD\_ABS01

	Free disk space on c: (%)	Total disk space on c: (Gb)	Free disk space on d: (%)	Total disk space on d: (Gb)
09-Mar-19	44	110	52	210
08-Mar-19	44	110	52	210
07-Mar-19	44	110	52	210
06-Mar-19	44	110	52	210
05-Mar-19	44	110	52	210
04-Mar-19	44	110	52	210
03-Mar-19	44	110	52	210

## Harddisk Usage CSC\_PRD\_ABS02

	Free disk space on c: (%)	Total disk space on c: (Gb)
09-Mar-19	16	80
08-Mar-19	16	80
07-Mar-19	16	80
06-Mar-19	16	80
05-Mar-19	16	80
04-Mar-19	16	80
03-Mar-19	16	80

# Weekly SLA Customer Report

Customer CSC\_Production  
Database ID 50



## Harddisk Usage CSC\_PRD\_ABS4

	Free disk space on c: (%)	Total disk space on c: (Gb)
09-Mar-19	48	80
08-Mar-19	48	80
07-Mar-19	48	80
06-Mar-19	48	80
05-Mar-19	48	80
04-Mar-19	48	80
03-Mar-19	48	80

## Harddisk Usage CSC\_PRD\_ABS5

	Free disk space on c: (%)	Total disk space on c: (Gb)
09-Mar-19	43	80
08-Mar-19	43	80
07-Mar-19	43	80
06-Mar-19	43	80
05-Mar-19	43	80
04-Mar-19	43	80
03-Mar-19	43	80

# Weekly SLA Customer Report

Customer CSC\_Production  
 Database ID 50



Harddisk Usage CSC\_PRD\_SRV\_Primary

	Free disk space on c: (%)	Total disk space on c: (Gb)	Free disk space on d: (%)	Total disk space on d: (Gb)	Free disk space on e: (%)	Total disk space on e: (Gb)
09-Mar-19	71	150	48	600	21	900
08-Mar-19	71	150	48	600	23	900
07-Mar-19	71	150	48	600	22	900
06-Mar-19	71	150	48	600	38	900
05-Mar-19	71	150	48	600	29	900
04-Mar-19	71	150	48	600	40	900
03-Mar-19	71	150	48	600	30	900

Harddisk Usage CSC\_PRD\_SRV\_Standby

	Free disk space on c: (%)	Total disk space on c: (Gb)	Free disk space on d: (%)	Total disk space on d: (Gb)	Free disk space on e: (%)	Total disk space on e: (Gb)
09-Mar-19	79	150	72	600	50	700
08-Mar-19	79	150	72	600	50	700
07-Mar-19	79	150	72	600	50	700
06-Mar-19	79	150	72	600	50	700
05-Mar-19	79	150	72	600	50	700
04-Mar-19	79	150	72	600	50	700
03-Mar-19	79	150	72	600	49	700

# Weekly SLA Customer Report

Customer CSC\_Production  
Database ID 50



Harddisk Usage CSC\_PRD\_WEBSRV

		Total disk space on c: (Gb)
09-Mar-19	45	59
08-Mar-19	45	59
07-Mar-19	45	59
06-Mar-19	45	59
05-Mar-19	45	59
04-Mar-19	45	59
03-Mar-19	45	59

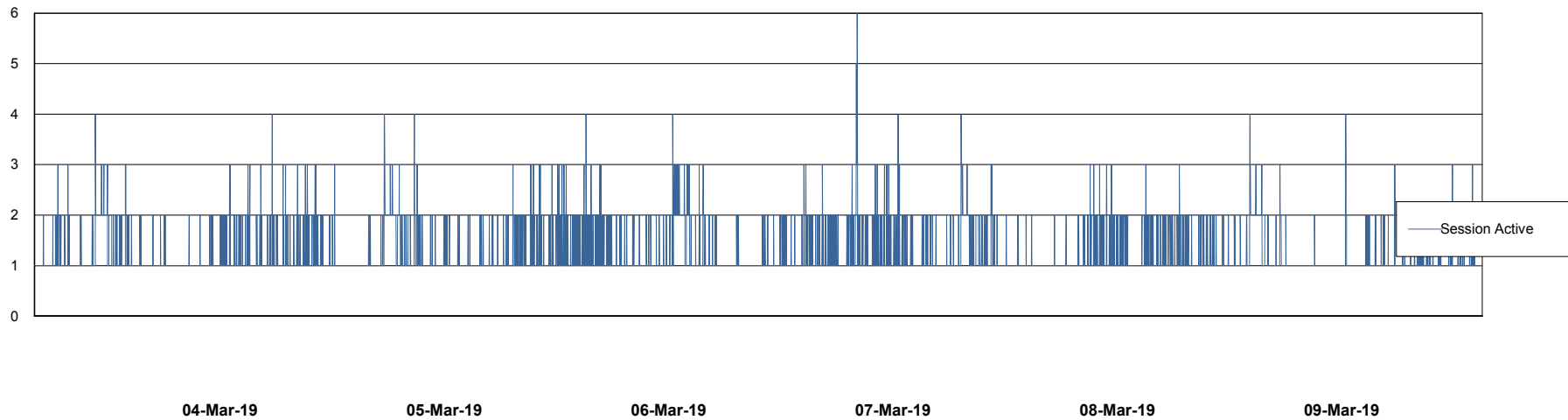
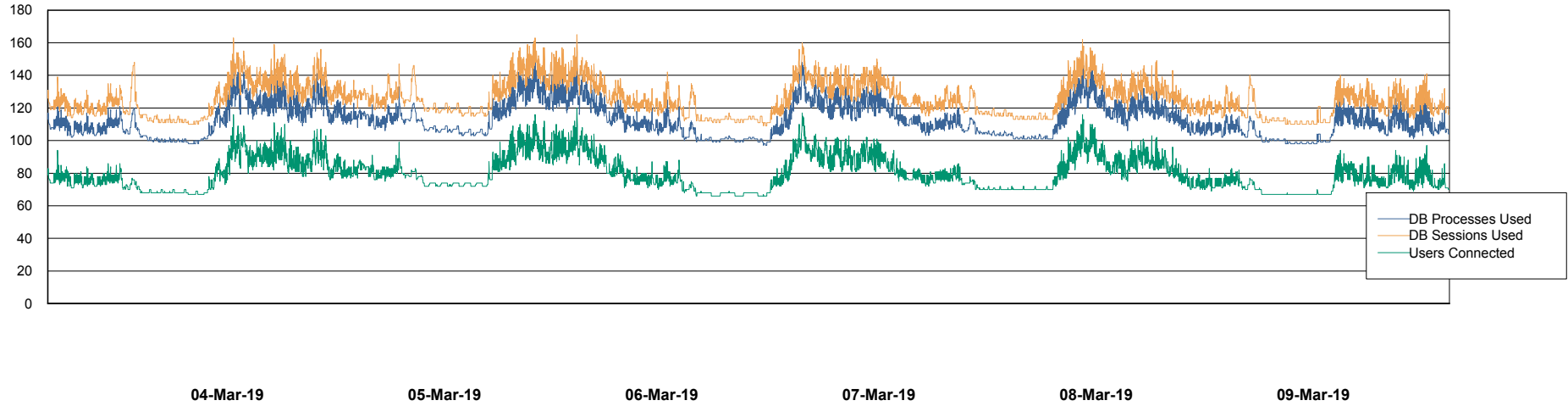
# Weekly SLA Customer Report

Customer CSC\_Production  
Database ID 50



## Database Performance CSCDB\_Primary

DB Processes Max 500  
DB Sessions Max 800



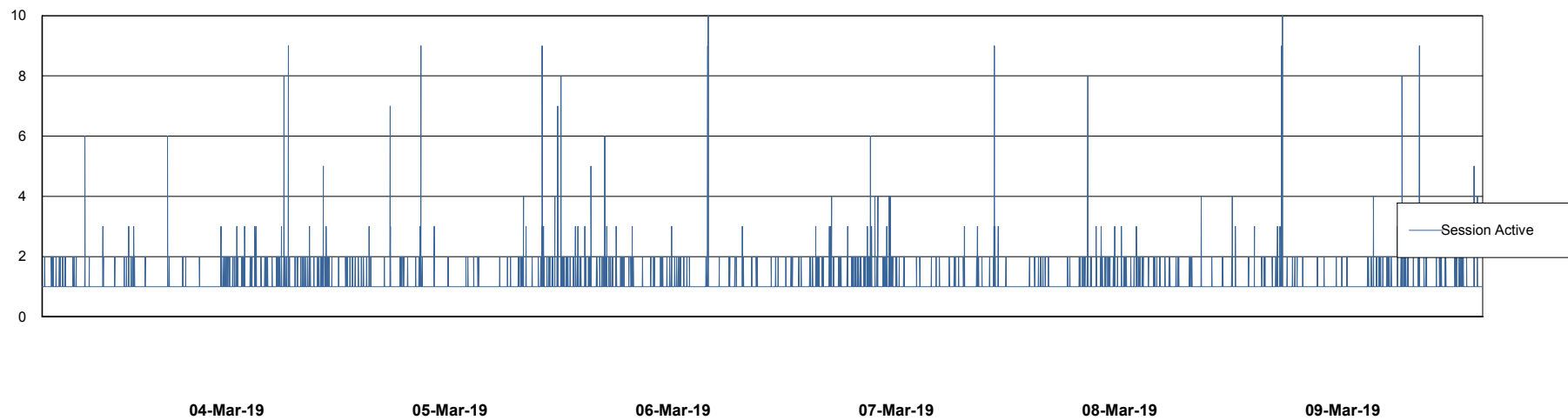
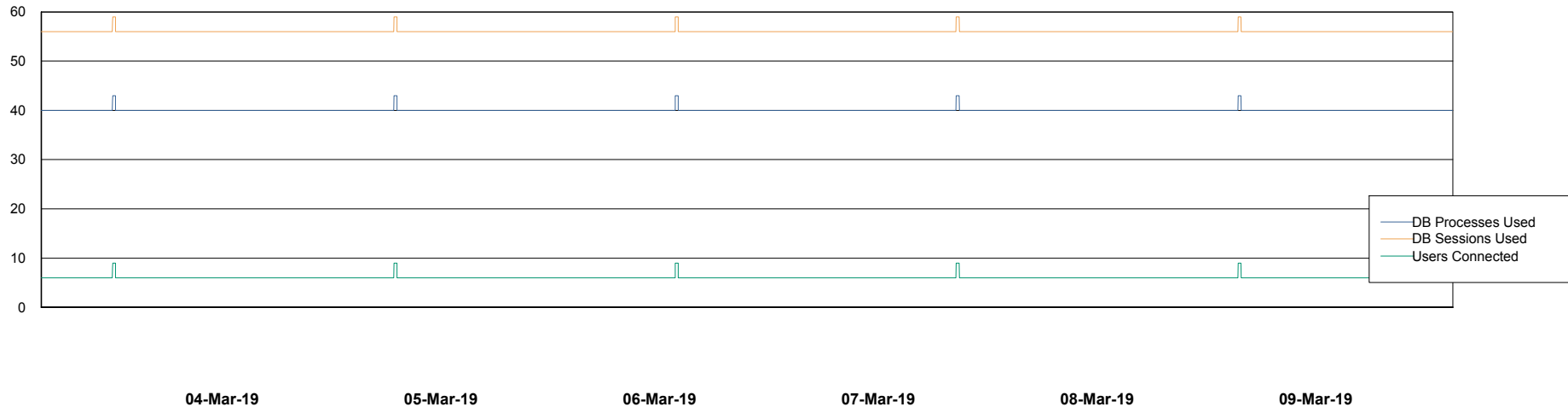
# Weekly SLA Customer Report

Customer CSC\_Production  
Database ID 50



## Database Performance CSCDB\_Standby

DB Processes Max 500  
DB Sessions Max 800



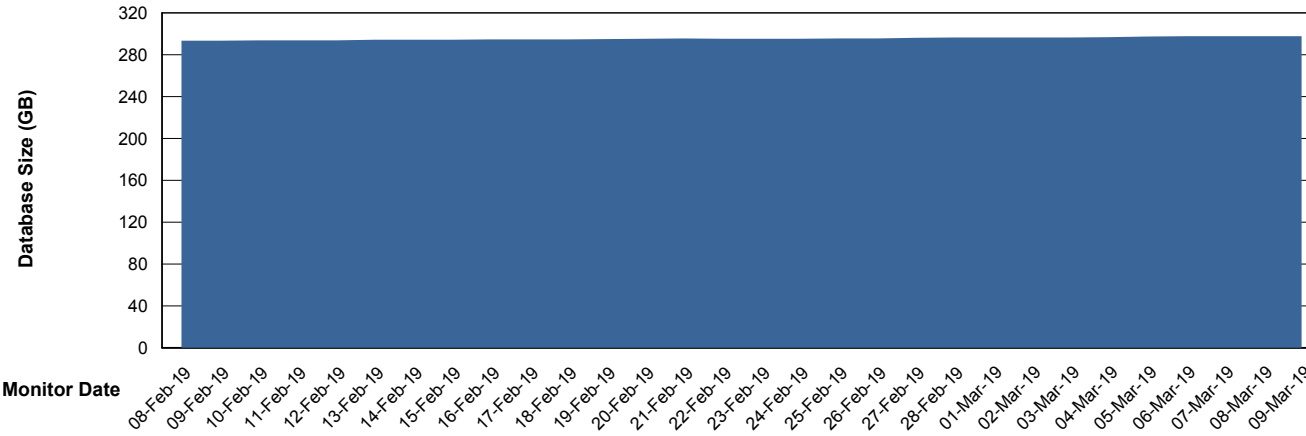
# Weekly SLA Customer Report

Customer CSC\_Production  
 Database ID 50



DATABASE SIZE CSCDB\_Primary

Database growth over last month



Database Tablespace CSCDB\_Primary

Date	Tablespace Name	Filesize (Gb)	Usedsize (Gb)	Percentage free
09-Mar-19	ABSDATA	131	104	21
	INDX	219	191	13
08-Mar-19	ABSDATA	131	104	21
	INDX	219	191	13
07-Mar-19	ABSDATA	131	104	21
	INDX	219	191	13
06-Mar-19	ABSDATA	131	104	21
	INDX	219	191	13
05-Mar-19	ABSDATA	131	104	21
	INDX	219	191	13
04-Mar-19	ABSDATA	131	104	21
	INDX	219	190	13
03-Mar-19	ABSDATA	131	104	21
	INDX	219	190	13

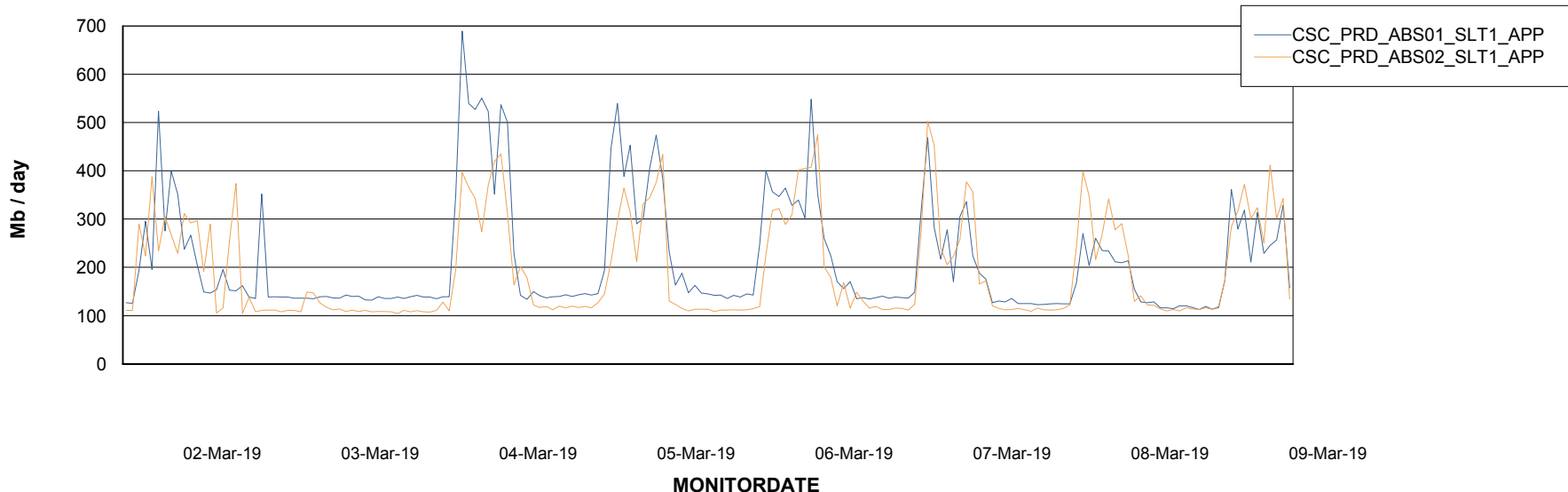
# Weekly SLA Customer Report

Customer CSC\_Production  
Database ID 50

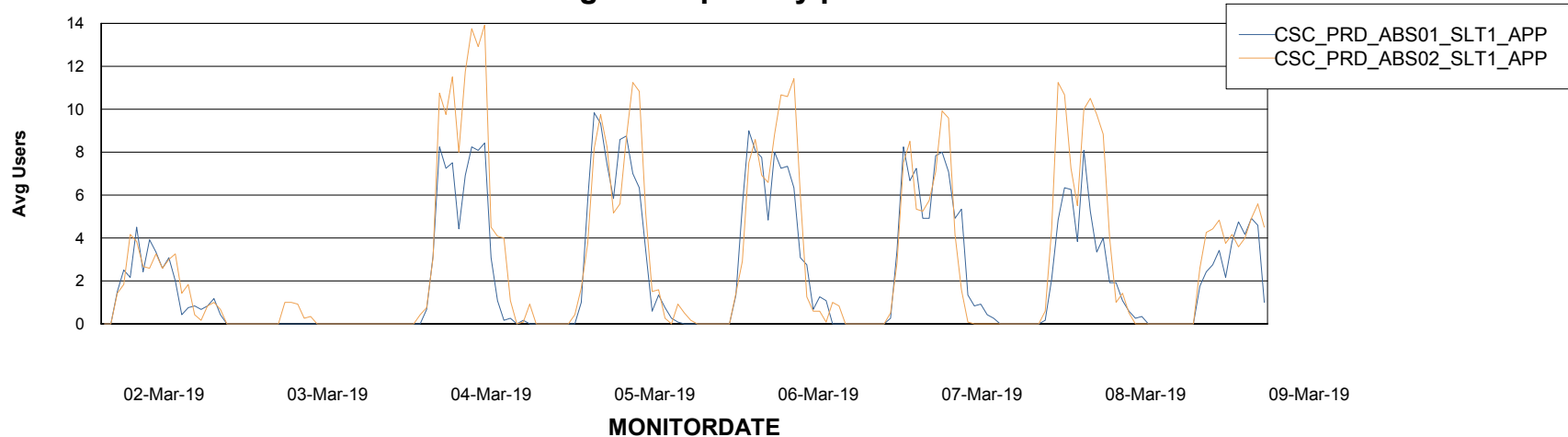


## ABSSolute Application Server Services

### Avg memory used per ABS Server Service



### Avg users per day per ABS server



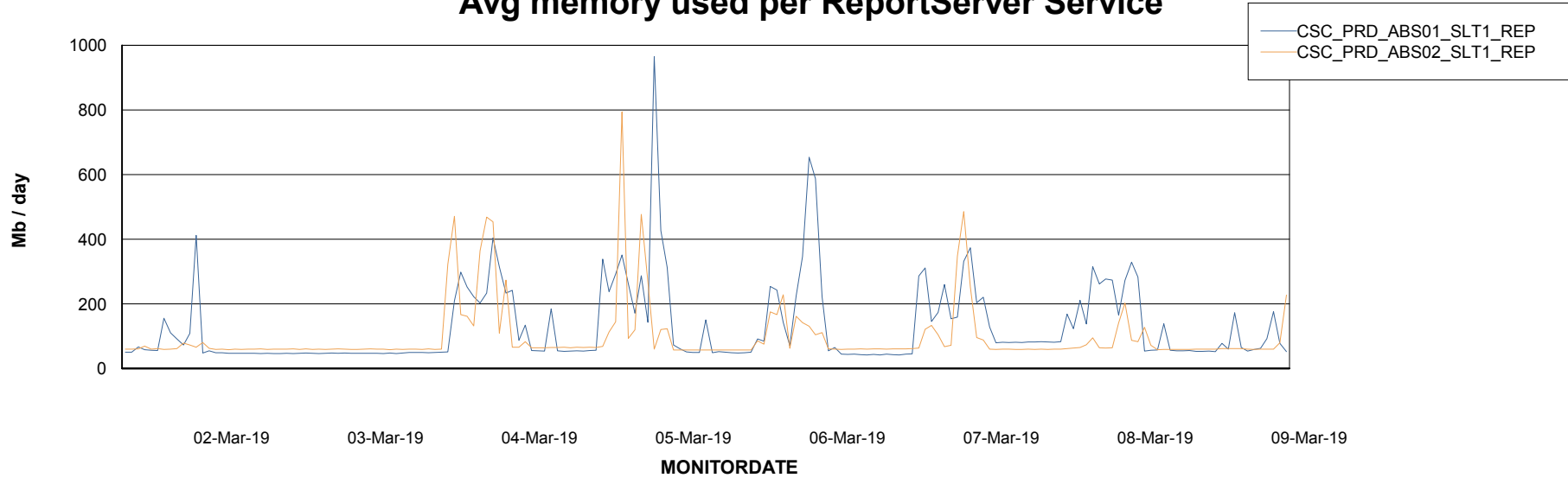
# Weekly SLA Customer Report

Customer CSC\_Production  
Database ID 50



## ABSSolute Application ReportServer Services

### Avg memory used per ReportServer Service



### Disaster per ABS component

