

# Weekly SLA Customer Report

Customer CUS Production  
 Database ID 84



Harddisk Usage CUS\_ABSBI

	Free disk space on c: (%)	Total disk space on c: (Gb)	Free disk space on d: (%)	Total disk space on d: (Gb)
16-Feb-19	79	199	57	800
15-Feb-19	79	199	58	800
14-Feb-19	79	199	58	800
13-Feb-19	79	199	58	800
12-Feb-19	79	199	58	800
11-Feb-19	79	199	58	800
10-Feb-19	79	199	58	800

Harddisk Usage CUS\_ABSPROD1

	Free disk space on c: (%)	Total disk space on c: (Gb)
16-Feb-19	32	199
15-Feb-19	32	199
14-Feb-19	32	199
13-Feb-19	33	199
12-Feb-19	33	199
11-Feb-19	33	199
10-Feb-19	33	199

# Weekly SLA Customer Report

Customer CUS Production  
Database ID 84



## Harddisk Usage CUS\_ABSPROD2

	Free disk space on c: (%)	Total disk space on c: (Gb)
16-Feb-19	72	199
15-Feb-19	72	199
14-Feb-19	72	199
13-Feb-19	73	199
12-Feb-19	73	199
11-Feb-19	73	199
10-Feb-19	73	199

## Harddisk Usage CUS\_ABSWEBPROD

	Free disk space on c: (%)	Total disk space on c: (Gb)
16-Feb-19	86	199
15-Feb-19	86	199
14-Feb-19	86	199
13-Feb-19	86	199
12-Feb-19	86	199
11-Feb-19	86	199
10-Feb-19	86	199

# Weekly SLA Customer Report

Customer CUS Production  
Database ID 84



## Harddisk Usage CUS\_PrimaryDBSrv\_ABSDB1

	Free disk space on c: (%)	Total disk space on c: (Gb)	Free disk space on d: (%)	Total disk space on d: (Gb)
16-Feb-19	84	199	68	1,024
15-Feb-19	84	199	68	1,024
14-Feb-19	84	199	68	1,024
13-Feb-19	84	199	68	1,024
12-Feb-19	84	199	68	1,024
11-Feb-19	84	199	70	1,024
10-Feb-19	84	199	71	1,024

## Harddisk Usage CUS\_StandByDBSrv\_ABSDB2

	Free disk space on c: (%)	Total disk space on c: (Gb)	Free disk space on d: (%)	Total disk space on d: (Gb)
16-Feb-19	86	199	82	1,024
15-Feb-19	86	199	82	1,024
14-Feb-19	86	199	82	1,024
13-Feb-19	86	199	83	1,024
12-Feb-19	86	199	83	1,024
11-Feb-19	86	199	83	1,024
10-Feb-19	86	199	83	1,024

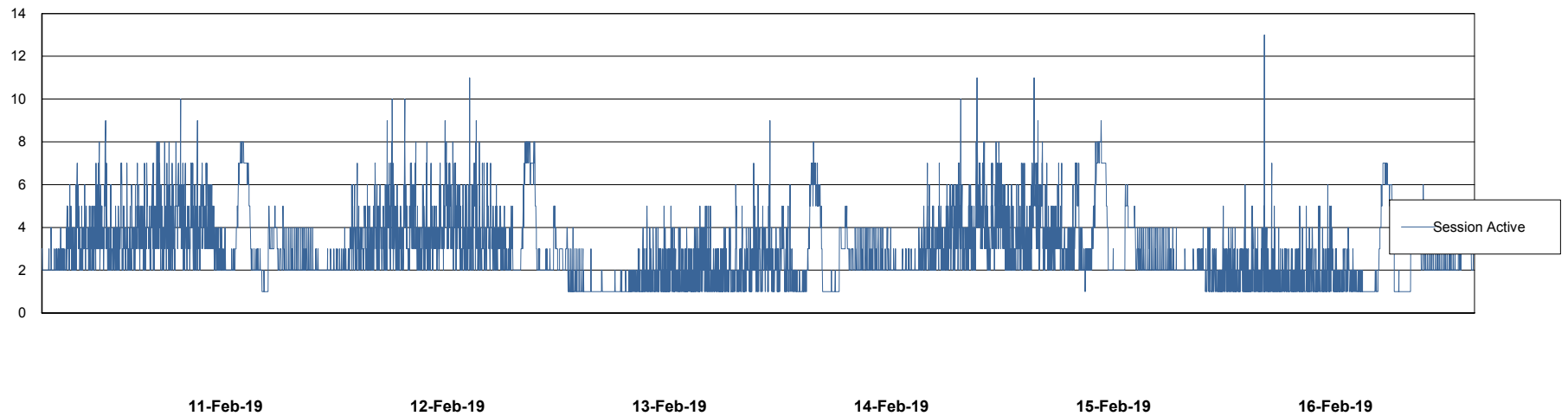
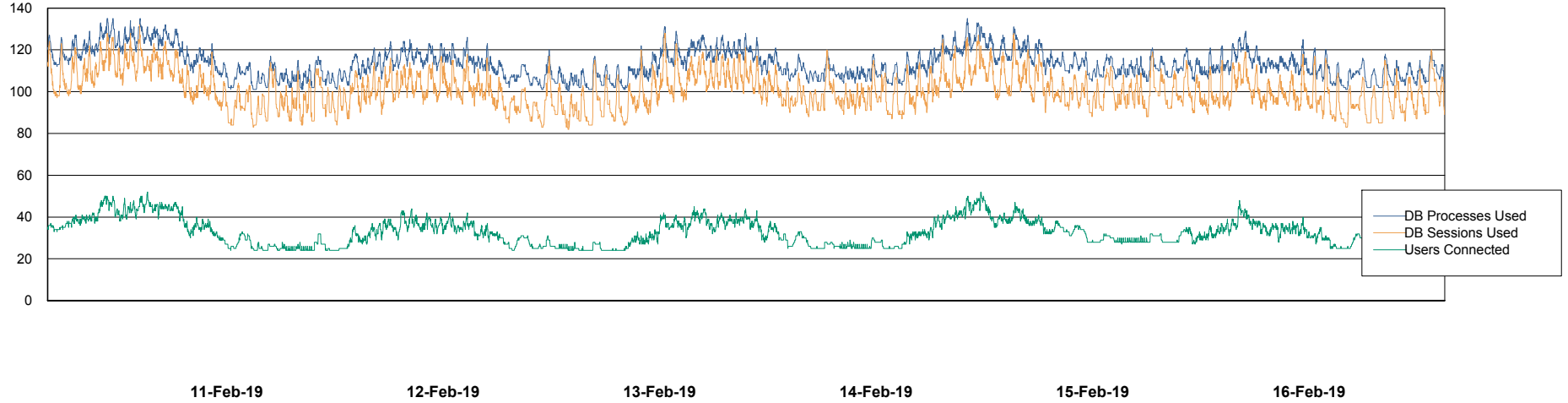
# Weekly SLA Customer Report

Customer CUS Production  
Database ID 84



## Database Performance CUS\_ProdDB\_Primary

DB Processes Max 300  
DB Sessions Max 472



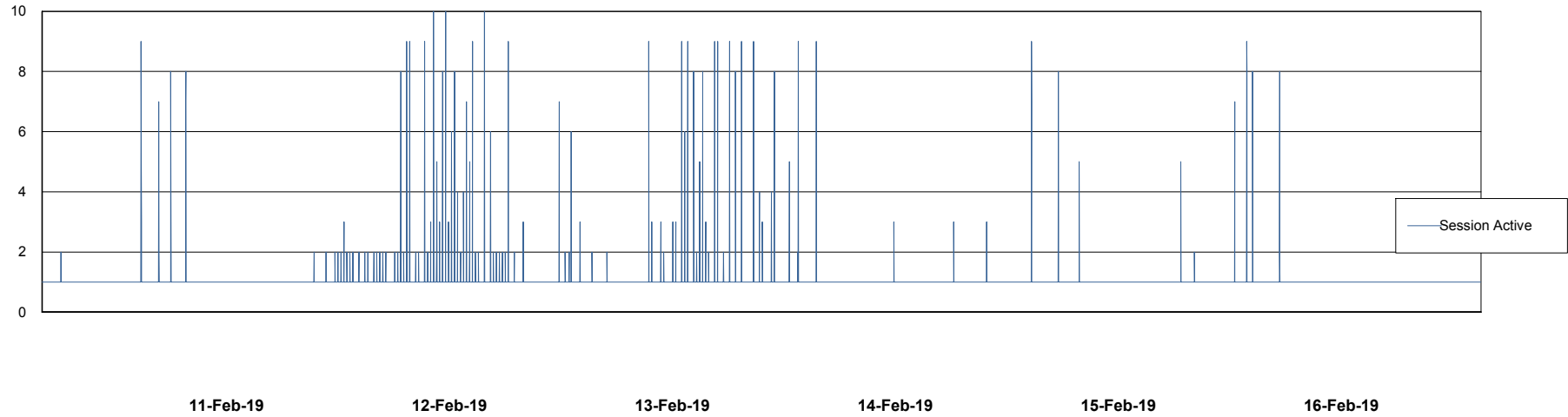
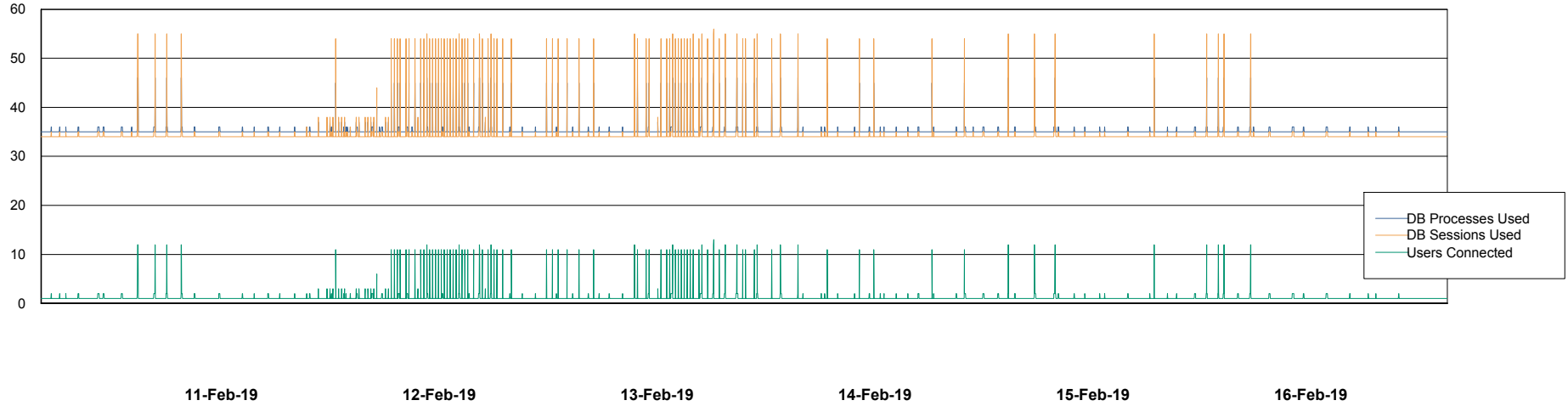
# Weekly SLA Customer Report

Customer CUS Production  
Database ID 84



## Database Performance CUS\_ProdDB\_Standby

DB Processes Max 300  
DB Sessions Max 472



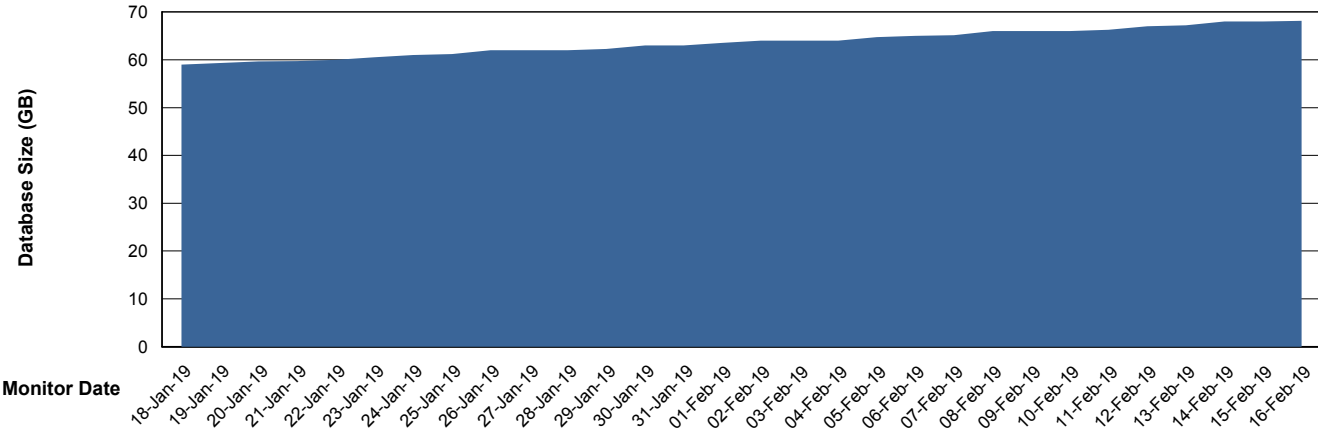
# Weekly SLA Customer Report

Customer CUS Production  
 Database ID 84



DATABASE SIZE CUS\_ProdDB\_Primary

Database growth over last month



Database Tablespace CUS\_ProdDB\_Primary

Date	Tablespace Name	Filesize (Gb)	Usedsize (Gb)	Percentage free
16-Feb-19	ABSDATA	69	59	14
	INDX	4	0	100
15-Feb-19	ABSDATA	69	59	14
	INDX	4	0	100
14-Feb-19	ABSDATA	69	59	14
	INDX	4	0	100
13-Feb-19	ABSDATA	69	58	16
	INDX	4	0	100
12-Feb-19	ABSDATA	69	57	17
	INDX	4	0	100
11-Feb-19	ABSDATA	69	57	17
	INDX	4	0	100
10-Feb-19	ABSDATA	69	57	17
	INDX	4	0	100

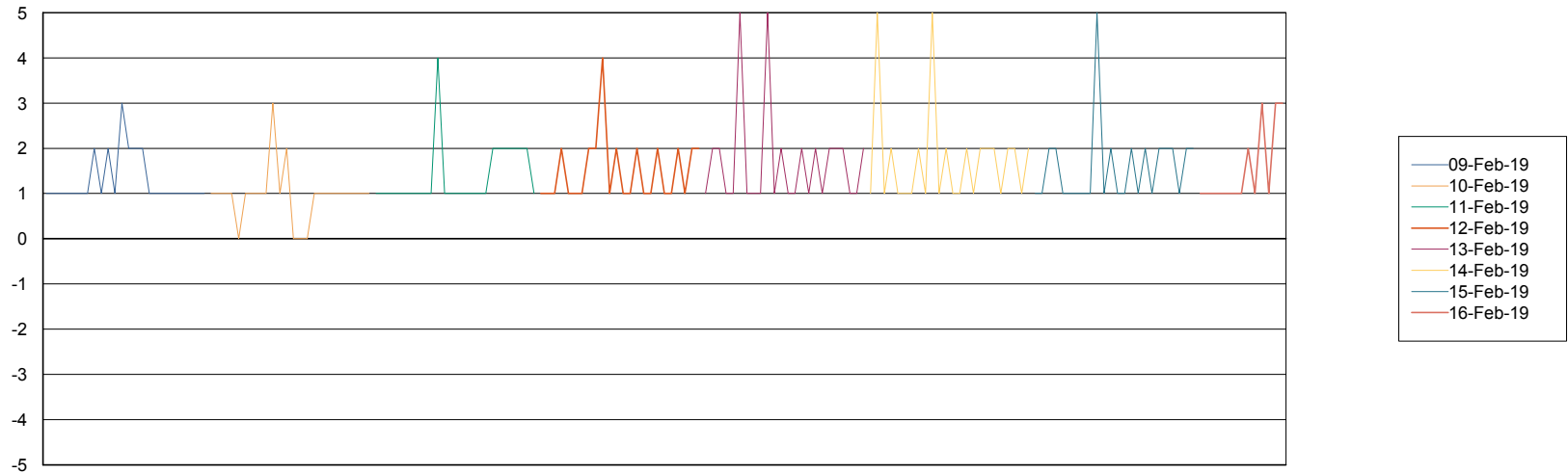
# Weekly SLA Customer Report

Customer CUS Production  
Database ID 84



Standby Database Health CUS Production

### Recovery lag for last 7 days



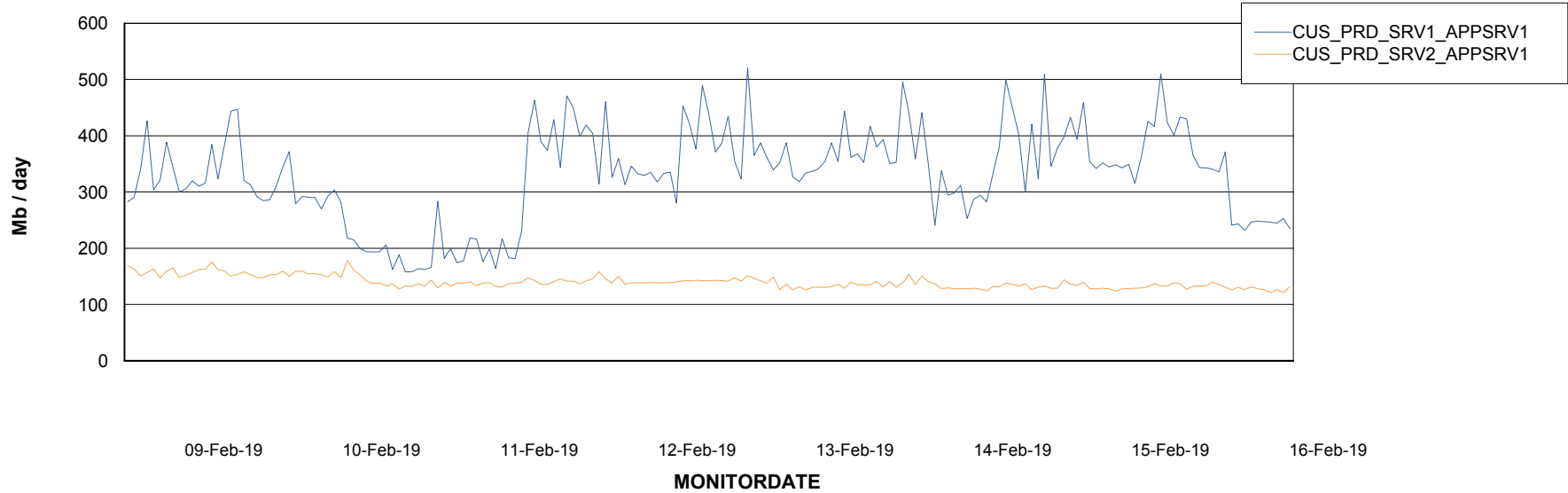
# Weekly SLA Customer Report

Customer CUS Production  
Database ID 84

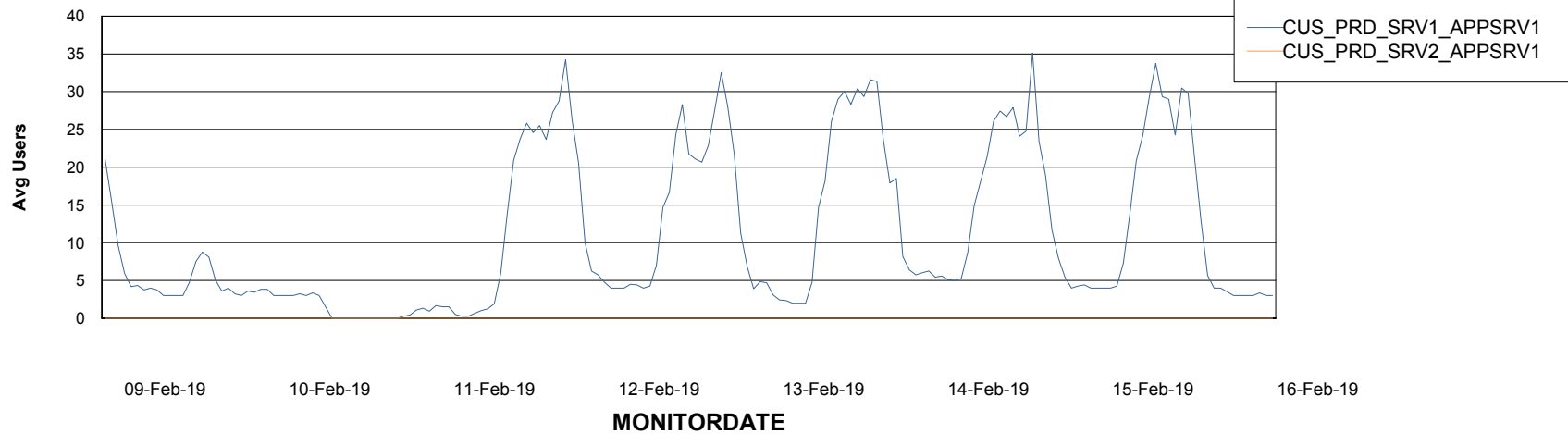


## ABSSolute Application Server Services

### Avg memory used per ABS Server Service



### Avg users per day per ABS server



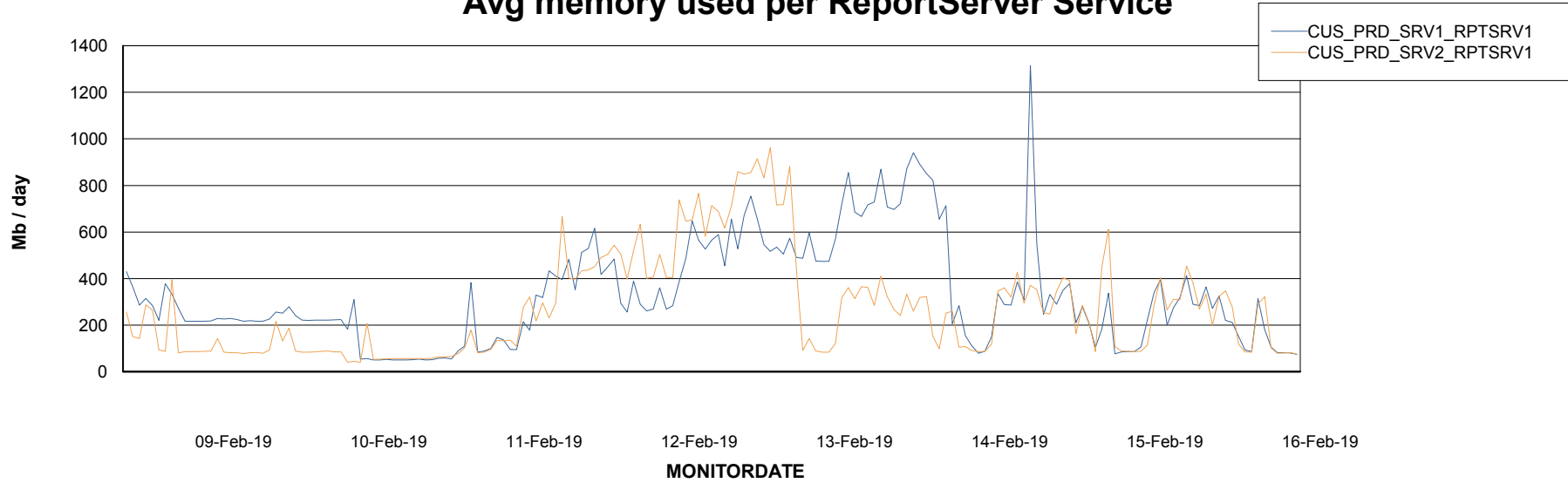
# Weekly SLA Customer Report

Customer CUS Production  
Database ID 84



## ABSolute Web Component Services

### Avg memory used per ReportServer Service



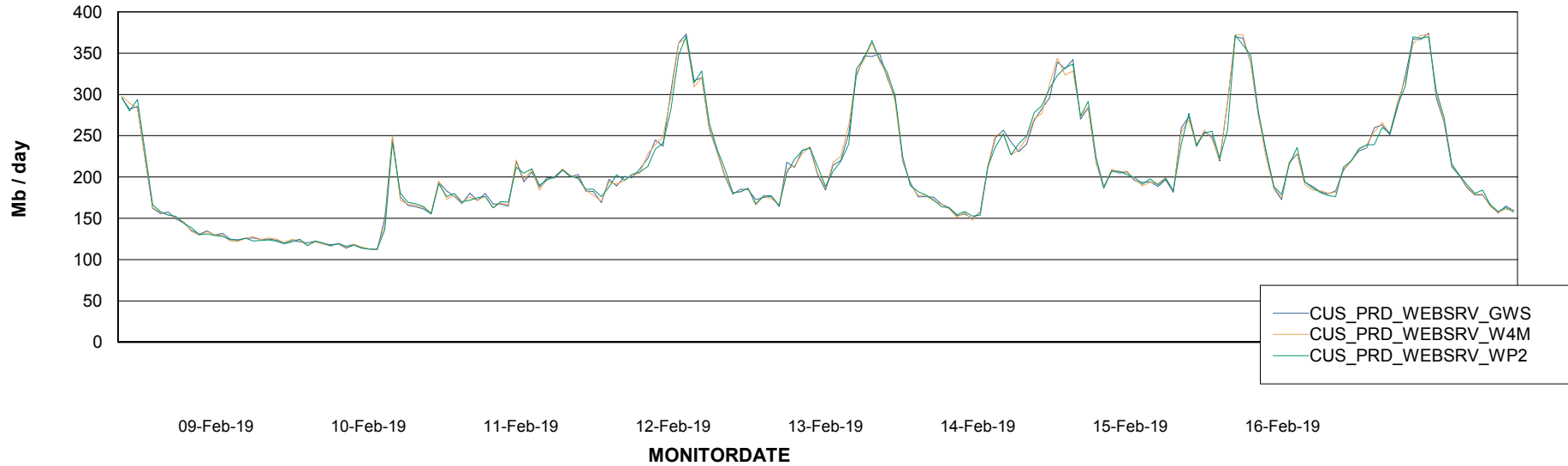
# Weekly SLA Customer Report

Customer CUS Production  
Database ID 84



## ABSSolute Web Component Services

### Avg memory used per ABS Web component



# Weekly SLA Customer Report

Customer CUS Production  
Database ID 84



## Disaster per ABS component

