

# Weekly SLA Customer Report

Customer PCO Production  
Database ID 44



## Harddisk Usage PCO\_PRD\_ORACLE1

	Free disk space on c: (%)	Total disk space on c: (Gb)	Free disk space on d: (%)	Total disk space on d: (Gb)
26-Jan-19	83	447	64	1,676
25-Jan-19	83	447	65	1,676
24-Jan-19	83	447	65	1,676
23-Jan-19	83	447	65	1,676
22-Jan-19	83	447	65	1,676
21-Jan-19	83	447	64	1,676
20-Jan-19	83	447	64	1,676

## Harddisk Usage PCO\_PRD\_ORACLE2

	Free disk space on c: (%)	Total disk space on c: (Gb)	Free disk space on d: (%)	Total disk space on d: (Gb)
26-Jan-19	77	279	49	838
25-Jan-19	77	279	50	838
24-Jan-19	77	279	50	838
23-Jan-19	77	279	50	838
22-Jan-19	77	279	49	838
21-Jan-19	77	279	49	838
20-Jan-19	77	279	49	838

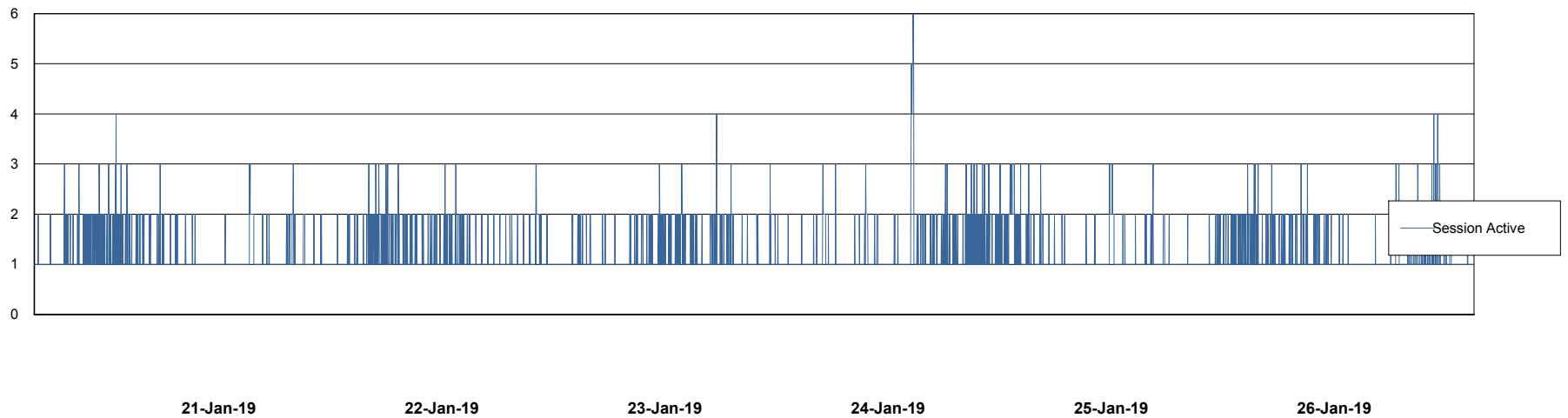
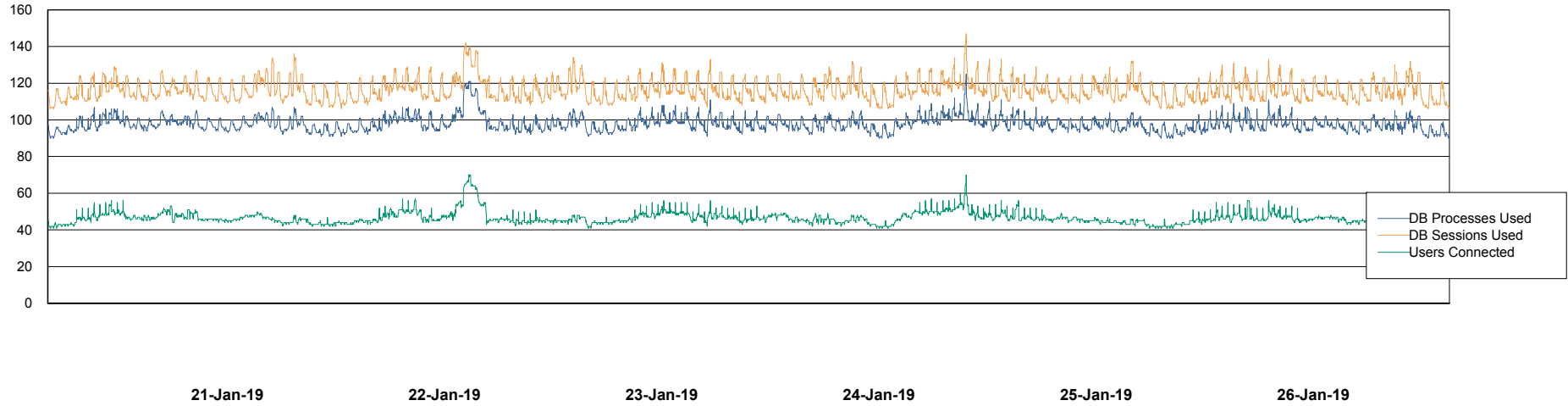
# Weekly SLA Customer Report

Customer PCO Production  
Database ID 44



## Database Performance PCODB\_Production

DB Processes Max 350  
DB Sessions Max 560



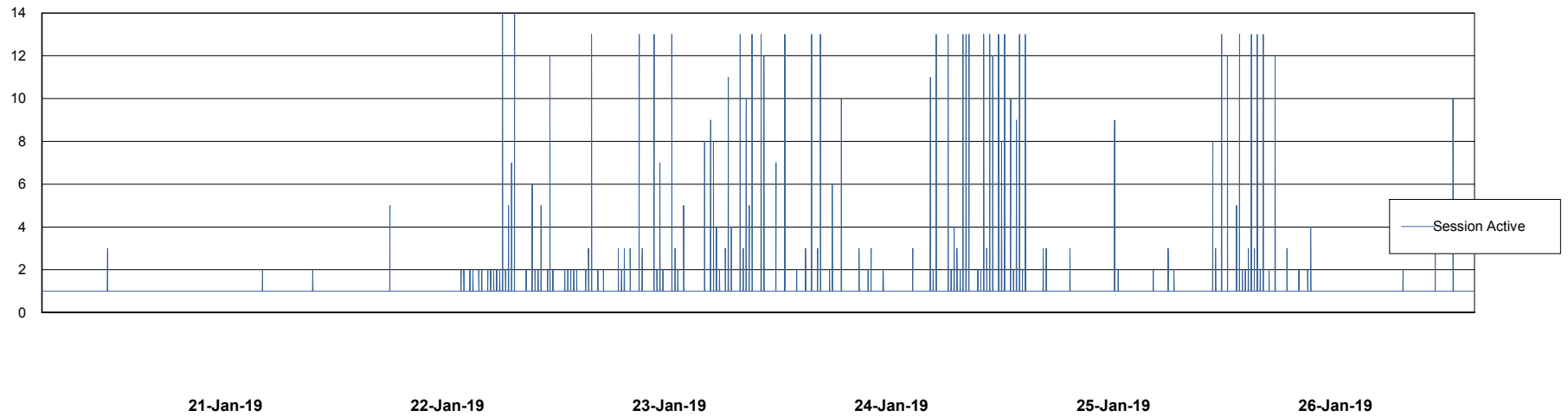
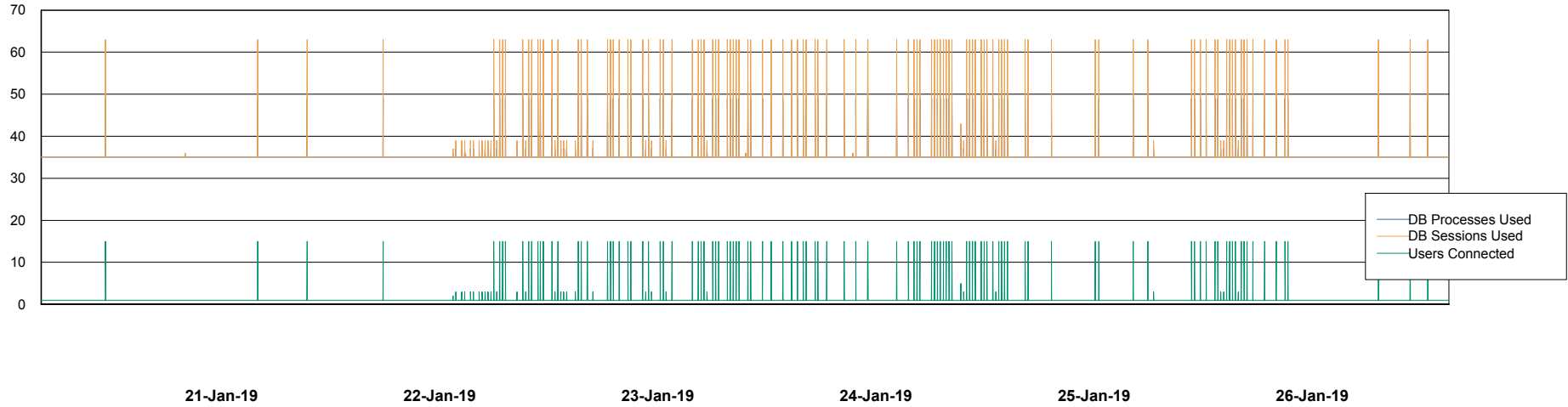
# Weekly SLA Customer Report

Customer PCO Production  
Database ID 44



## Database Performance PCODB\_Standby

DB Processes Max 350  
DB Sessions Max 552



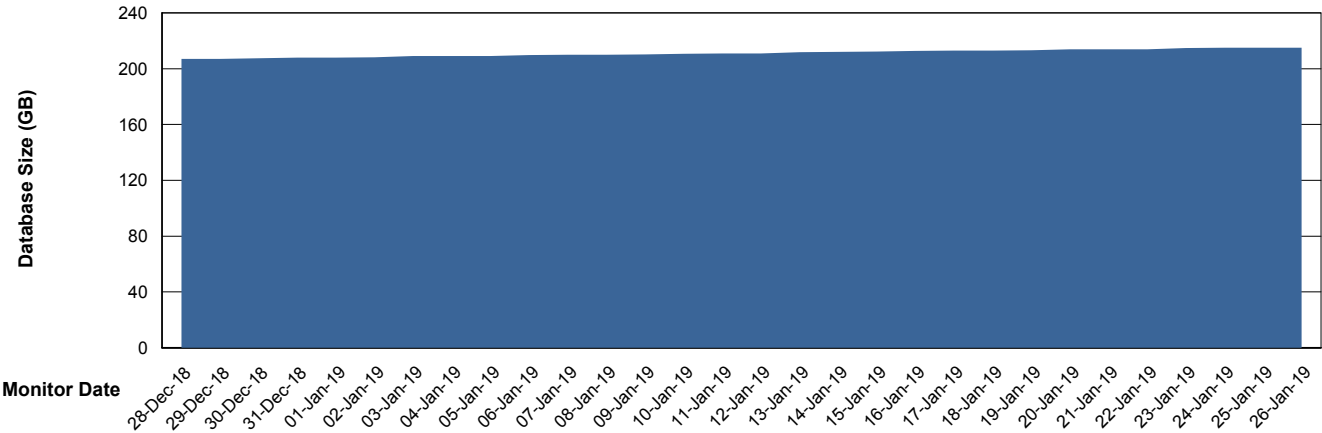
# Weekly SLA Customer Report

Customer PCO Production  
 Database ID 44



DATABASE SIZE PCODB\_Production

Database growth over last month



Database Tablespace PCODB\_Production

Date	Tablespace Name	Filesize (Gb)	Usedsize (Gb)	Percentage free
26-Jan-19	ABSDATA	150	82	45
	INDX	200	113	44
25-Jan-19	ABSDATA	150	82	45
	INDX	200	113	44
24-Jan-19	ABSDATA	150	82	45
	INDX	200	113	44
23-Jan-19	ABSDATA	150	82	45
	INDX	200	113	44
22-Jan-19	ABSDATA	150	82	45
	INDX	200	113	44
21-Jan-19	ABSDATA	150	82	45
	INDX	200	113	44
20-Jan-19	ABSDATA	150	82	45
	INDX	200	113	44

# Weekly SLA Customer Report

Customer PCO Production  
Database ID 44



Standby Database Health      PCO Production

### Recovery lag for last 7 days

