

# Weekly SLA Customer Report

Customer CUS Production  
Database ID 84



## Harddisk Usage CUS\_ABSBI

	Free disk space on c: (%)	Total disk space on c: (Gb)	Free disk space on d: (%)	Total disk space on d: (Gb)
05-Jan-19	81	199	66	800
04-Jan-19	81	199	66	800
03-Jan-19	81	199	66	800
02-Jan-19	81	199	66	800
01-Jan-19	81	199	66	800
31-Dec-18	81	199	66	800
30-Dec-18	81	199	66	800

## Harddisk Usage CUS\_ABSPROD1

	Free disk space on c: (%)	Total disk space on c: (Gb)
05-Jan-19	26	199
04-Jan-19	62	199
03-Jan-19	63	199
02-Jan-19	63	199
01-Jan-19	63	199
31-Dec-18	63	199
30-Dec-18	63	199

# Weekly SLA Customer Report

Customer CUS Production  
Database ID 84



## Harddisk Usage CUS\_ABSPROD2

	Free disk space on c: (%)	Total disk space on c: (Gb)
05-Jan-19	77	199
04-Jan-19	77	199
03-Jan-19	77	199
02-Jan-19	77	199
01-Jan-19	77	199
31-Dec-18	77	199
30-Dec-18	77	199

## Harddisk Usage CUS\_ABSWEBPROD

	Free disk space on c: (%)	Total disk space on c: (Gb)
05-Jan-19	87	199
04-Jan-19	87	199
03-Jan-19	87	199
02-Jan-19	88	199
01-Jan-19	88	199
31-Dec-18	88	199
30-Dec-18	88	199

# Weekly SLA Customer Report

Customer CUS Production  
Database ID 84



## Harddisk Usage CUS\_PrimaryDBSrv\_ABSDB1

	Free disk space on c: (%)	Total disk space on c: (Gb)	Free disk space on d: (%)	Total disk space on d: (Gb)
05-Jan-19	84	199	80	1,024
04-Jan-19	84	199	80	1,024
03-Jan-19	84	199	80	1,024
02-Jan-19	84	199	80	1,024
01-Jan-19	84	199	80	1,024
31-Dec-18	84	199	80	1,024
30-Dec-18	84	199	80	1,024

## Harddisk Usage CUS\_StandByDBSrv\_ABSDB2

	Free disk space on c: (%)	Total disk space on c: (Gb)	Free disk space on d: (%)	Total disk space on d: (Gb)
05-Jan-19	86	199	85	1,024
04-Jan-19	86	199	85	1,024
03-Jan-19	86	199	85	1,024
02-Jan-19	86	199	85	1,024
01-Jan-19	86	199	84	1,024
31-Dec-18	86	199	85	1,024
30-Dec-18	86	199	85	1,024

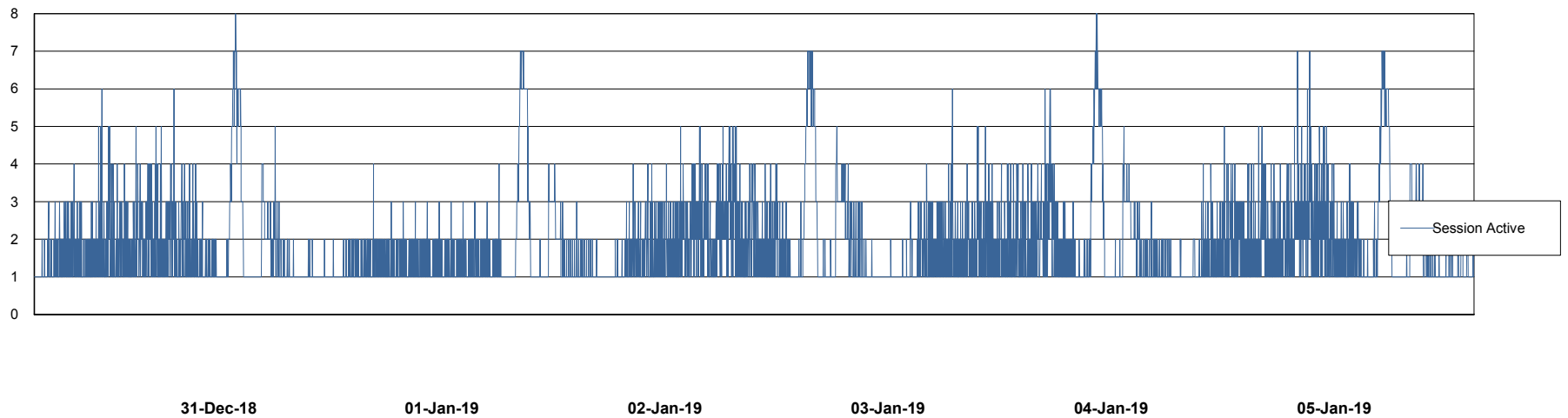
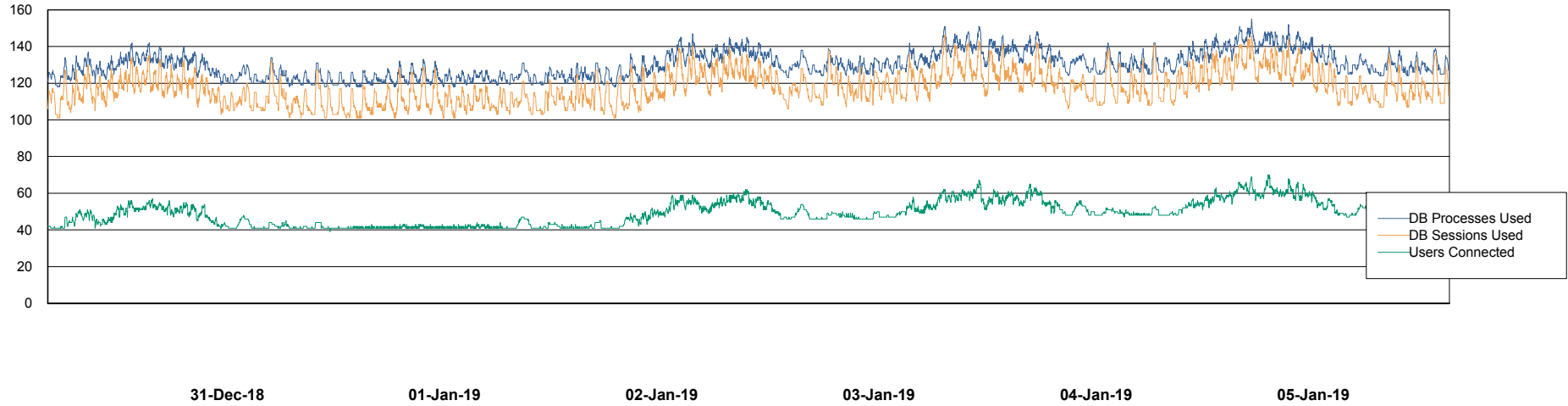
# Weekly SLA Customer Report

Customer CUS Production  
Database ID 84



## Database Performance CUS\_ProdDB\_Primary

DB Processes Max 300  
DB Sessions Max 472



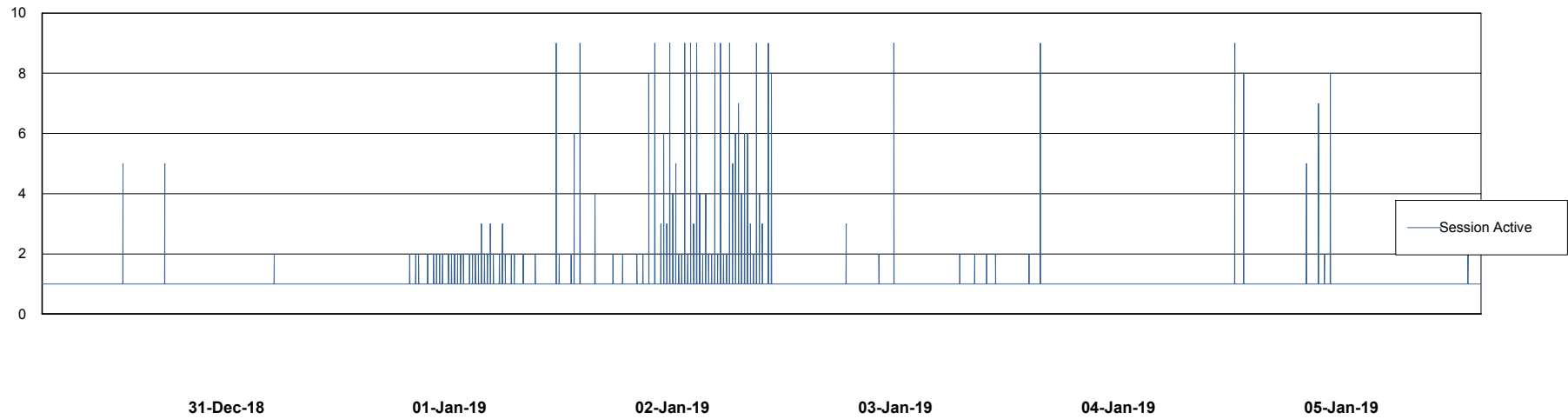
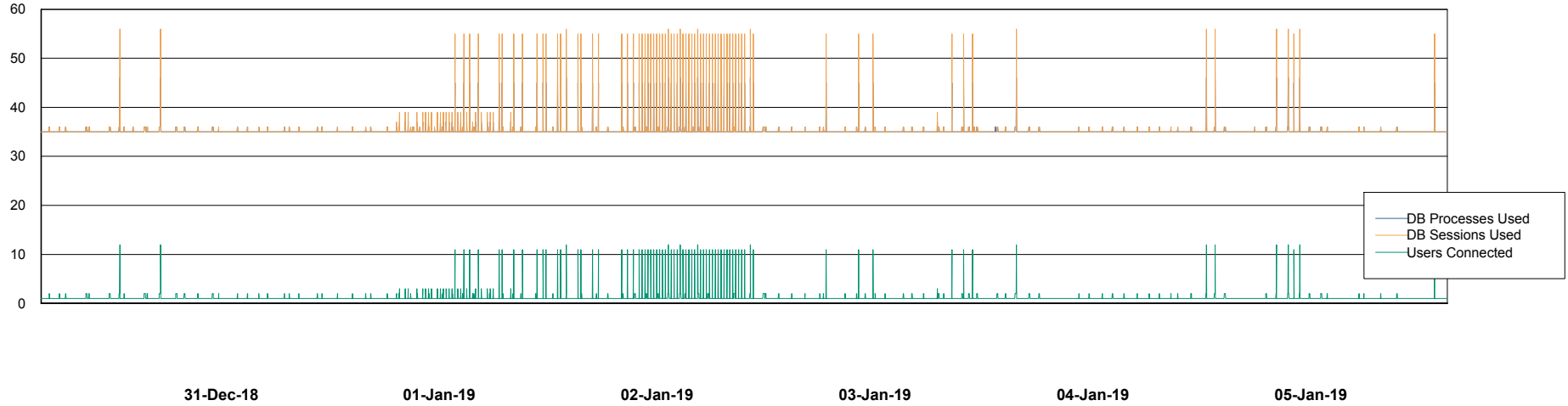
# Weekly SLA Customer Report

Customer CUS Production  
Database ID 84



## Database Performance CUS\_ProdDB\_Standby

DB Processes Max 300  
DB Sessions Max 472



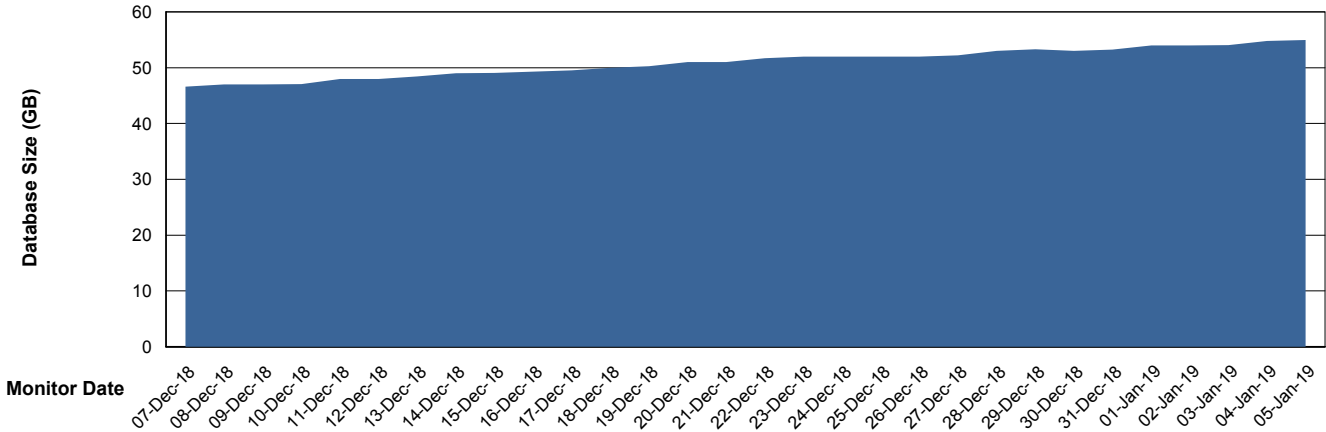
# Weekly SLA Customer Report

Customer CUS Production  
 Database ID 84



DATABASE SIZE CUS\_ProdDB\_Primary

Database growth over last month



Database Tablespace CUS\_ProdDB\_Primary

Date	Tablespace Name	Filesize (Gb)	Usedsize (Gb)	Percentage free
05-Jan-19	ABSDATA	54	47	13
	INDX	12	0	100
04-Jan-19	ABSDATA	54	47	13
	INDX	12	0	100
03-Jan-19	ABSDATA	54	46	15
	INDX	12	0	100
02-Jan-19	ABSDATA	54	45	17
	INDX	12	0	100
01-Jan-19	ABSDATA	54	44	19
	INDX	12	0	100
31-Dec-18	ABSDATA	54	44	19
	INDX	12	0	100
30-Dec-18	ABSDATA	54	44	19
	INDX	12	0	100

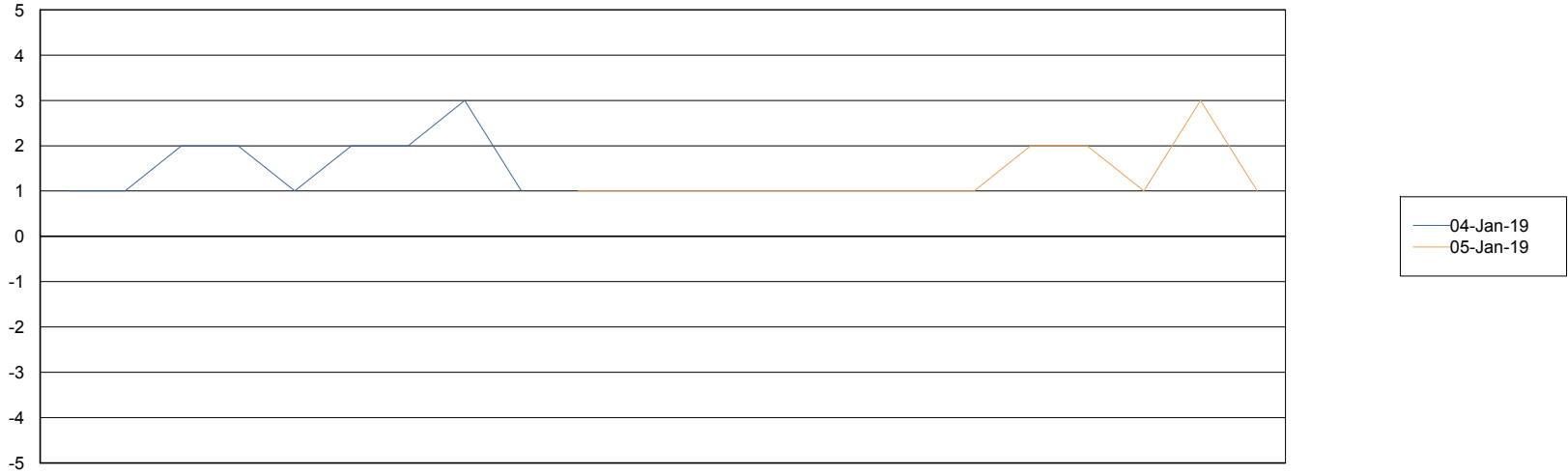
# Weekly SLA Customer Report

Customer CUS Production  
Database ID 84



Standby Database Health CUS Production

### Recovery lag for last 7 days



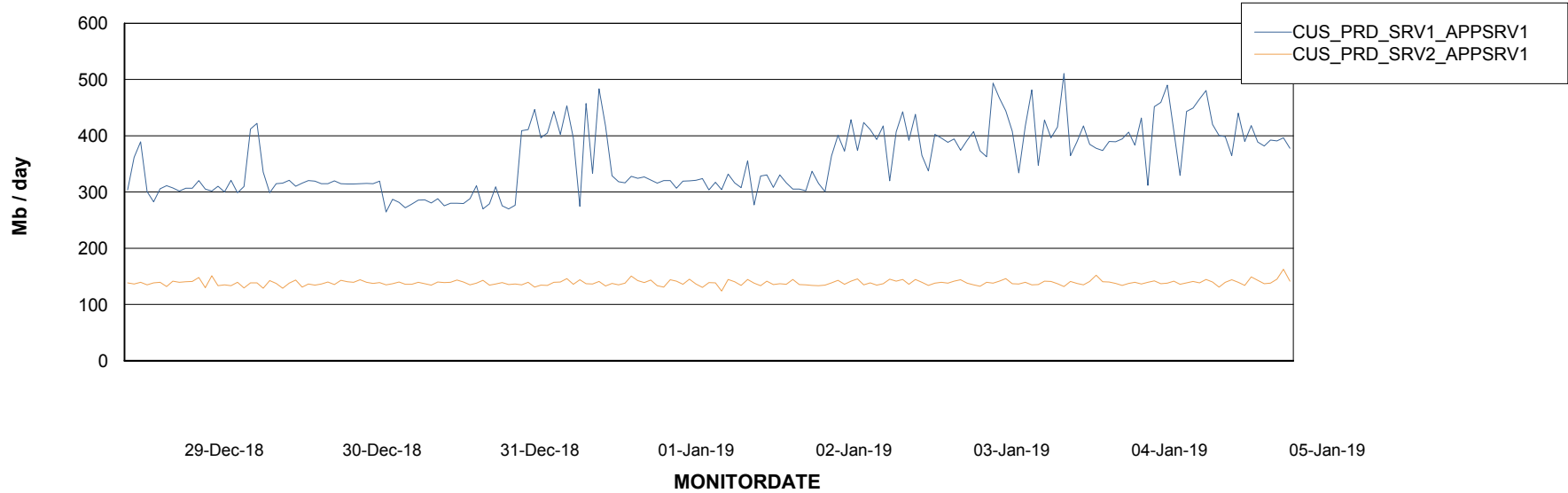
# Weekly SLA Customer Report

Customer CUS Production  
Database ID 84

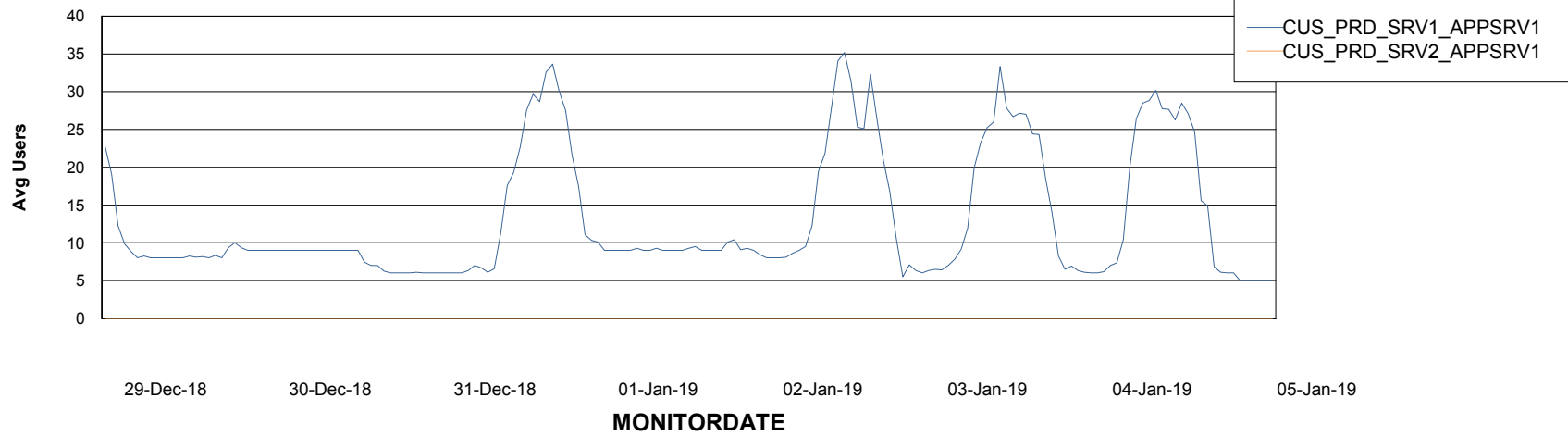


## ABSSolute Application Server Services

### Avg memory used per ABS Server Service



### Avg users per day per ABS server



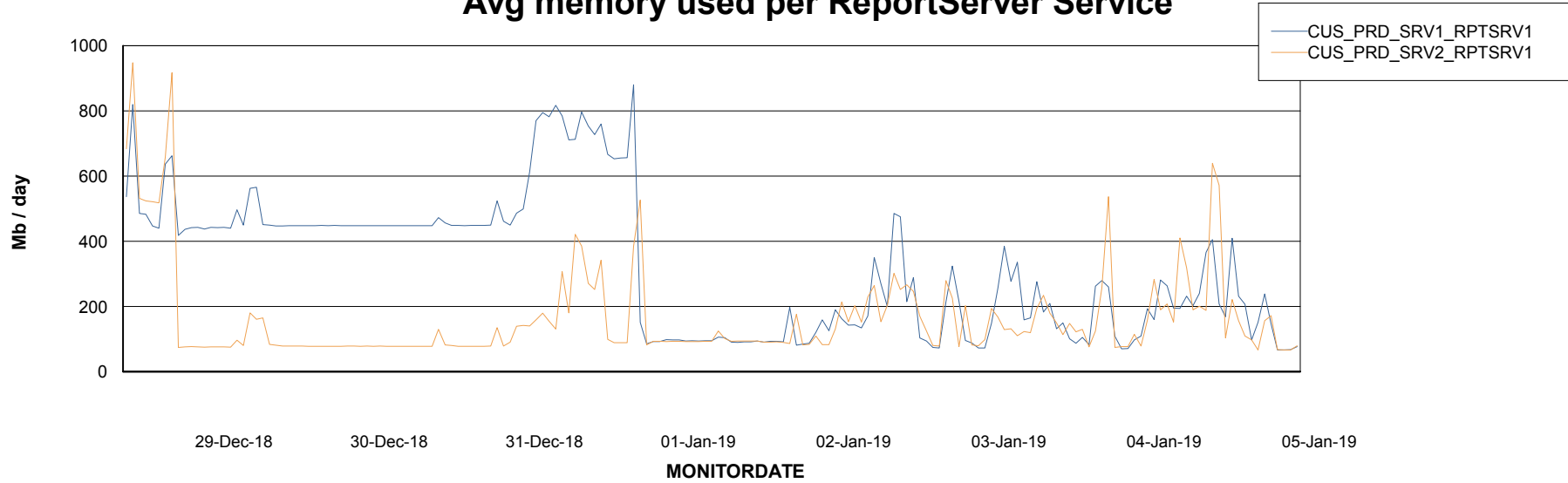
# Weekly SLA Customer Report

Customer CUS Production  
Database ID 84



## ABSolute Web Component Services

### Avg memory used per ReportServer Service



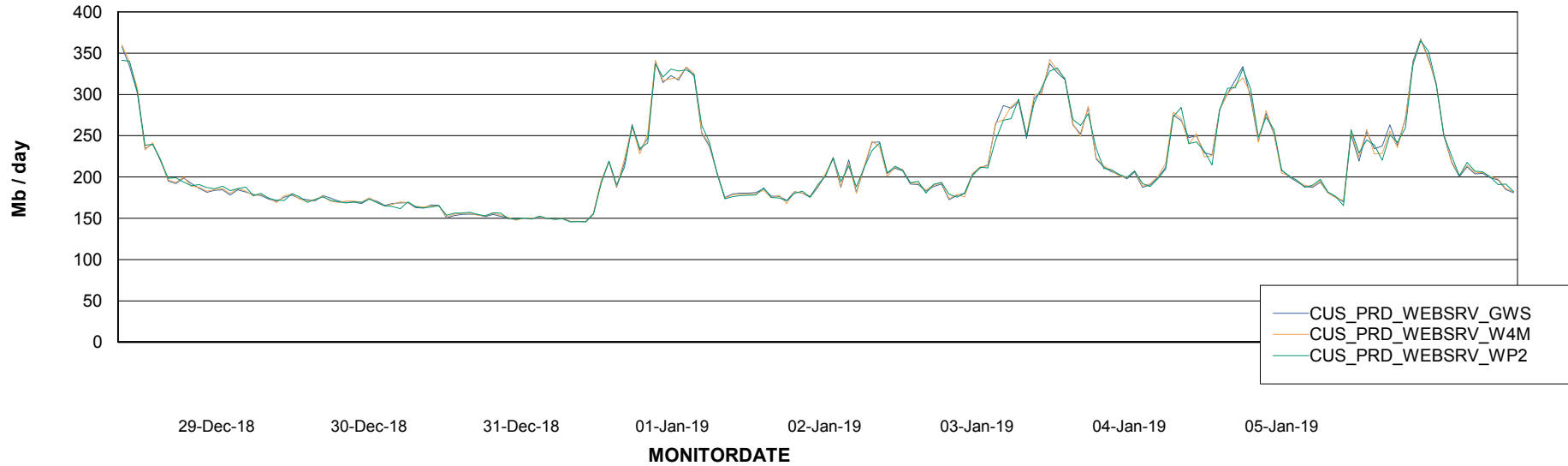
# Weekly SLA Customer Report

Customer CUS Production  
Database ID 84



## ABSolute Web Component Services

### Avg memory used per ABS Web component



# Weekly SLA Customer Report

Customer CUS Production  
Database ID 84



## Disaster per ABS component

