

# Weekly SLA Customer Report

Customer AUJ\_Production  
Database ID 41



## Harddisk Usage AUJ\_PRD\_ABS\_APP1

	Free disk space on / (%)	Total disk space on / (Gb)	Used disk space on / (Gb)
22-Dec-18	24	241	174
21-Dec-18	24	241	174
20-Dec-18	24	241	174
19-Dec-18	24	241	174
18-Dec-18	24	241	174
17-Dec-18	24	241	174
16-Dec-18	24	241	174

## Harddisk Usage AUJ\_PRD\_ABS\_APP2

	Free disk space on / (%)	Total disk space on / (Gb)	Used disk space on / (Gb)
22-Dec-18	20	241	182
21-Dec-18	20	241	182
20-Dec-18	20	241	182
19-Dec-18	20	241	182
18-Dec-18	20	241	182
17-Dec-18	21	241	182
16-Dec-18	21	241	182

# Weekly SLA Customer Report

Customer AUJ\_Production  
 Database ID 41



Harddisk Usage AUJ\_PRD\_ABS\_APP3

	Free disk space on / (%)	Total disk space on / (Gb)	Used disk space on / (Gb)
22-Dec-18	91	247	22
21-Dec-18	91	247	22
20-Dec-18	91	247	22
19-Dec-18	91	247	22
18-Dec-18	91	247	22
17-Dec-18	91	247	22
16-Dec-18	91	247	22

Harddisk Usage AUJ\_PRD\_ORACLE4

	Free disk space on / (%)	Total disk space on / (Gb)	Used disk space on / (Gb)	Free disk space on /bk (%)	Total disk space on /bk (Gb)	Used disk space on /bk (Gb)	Free disk space on /data (%)	Total disk space on /data (Gb)	Used disk space on /da /data
22-Dec-18	98	534	12	62	4,436	1,616	75	4,436	1,061
21-Dec-18	98	534	12	61	4,436	1,637	75	4,436	1,061
20-Dec-18	98	534	12	61	4,436	1,635	75	4,436	1,061
19-Dec-18	98	534	12	61	4,436	1,635	75	4,436	1,061
18-Dec-18	98	534	12	61	4,436	1,635	75	4,436	1,061
17-Dec-18	98	534	12	61	4,436	1,634	75	4,436	1,061
16-Dec-18	98	534	12	61	4,436	1,627	75	4,436	1,061

# Weekly SLA Customer Report

Customer AUJ\_Production  
Database ID 41



## Harddisk Usage AUJ\_PRD\_ORACLE5

	Free disk space on / (%)	Total disk space on / (Gb)	Used disk space on / (Gb)	Free disk space on /bk (%)	Total disk space on /bk (Gb)	Used disk space on /bk (Gb)	Free disk space on /data (%)	Total disk space on /data (Gb)	Used disk space on /da /data
22-Dec-18	98	534	12	94	4,436	235	75	4,436	1,064
21-Dec-18	98	534	12	94	4,436	238	75	4,436	1,064
20-Dec-18	98	534	12	94	4,436	237	75	4,436	1,064
19-Dec-18	98	534	12	94	4,436	238	75	4,436	1,064
18-Dec-18	98	534	12	94	4,436	237	75	4,436	1,064
17-Dec-18	98	534	12	95	4,436	230	75	4,436	1,064
16-Dec-18	98	534	12	95	4,436	224	75	4,436	1,064

## Harddisk Usage AUJ\_PRD\_ORACLE6

	Free disk space on / (%)	Total disk space on / (Gb)	Used disk space on / (Gb)	Free disk space on /bk (%)	Total disk space on /bk (Gb)	Used disk space on /bk (Gb)	Free disk space on /data (%)	Total disk space on /data (Gb)	Used disk space on /da /data
22-Dec-18	86	534	70	86	534	70	75	4,436	1,056
21-Dec-18	86	534	73	86	534	73	75	4,436	1,056
20-Dec-18	86	534	72	86	534	72	75	4,436	1,056
19-Dec-18	86	534	73	86	534	73	75	4,436	1,056
18-Dec-18	86	534	71	86	534	71	75	4,436	1,056
17-Dec-18	88	534	62	88	534	62	75	4,436	1,056
16-Dec-18	87	534	68	87	534	68	75	4,436	1,056

# Weekly SLA Customer Report

Customer AUJ\_Production  
Database ID 41



Harddisk Usage AUJ\_PRD\_ORACLE\_BI1

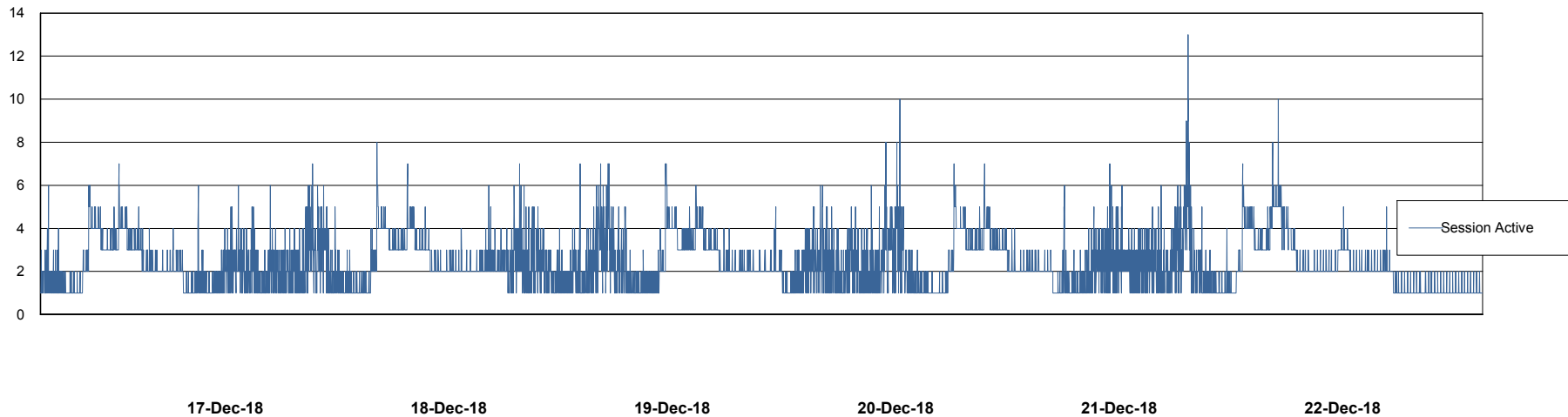
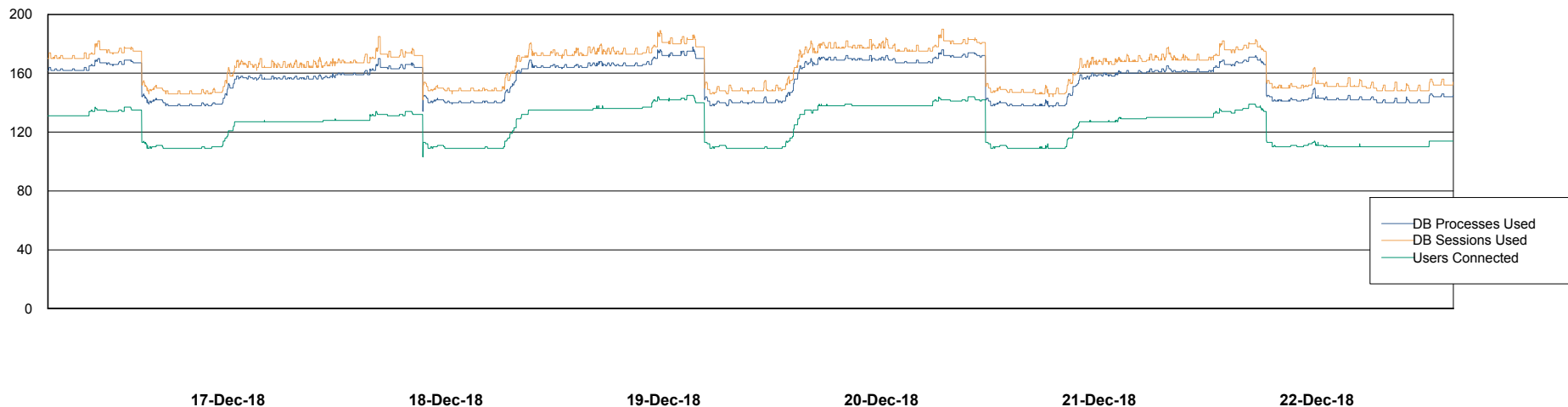
	Free disk space on / (%)	Total disk space on / (Gb)	Used disk space on / (Gb)
22-Dec-18	8	526	457
21-Dec-18	9	526	454
20-Dec-18	9	526	454
19-Dec-18	9	526	454
18-Dec-18	9	526	454
17-Dec-18	9	526	453
16-Dec-18	9	526	456

# Weekly SLA Customer Report

Customer AUJ\_Production  
Database ID 41



## Database Performance AUJ\_DB4\_Primary

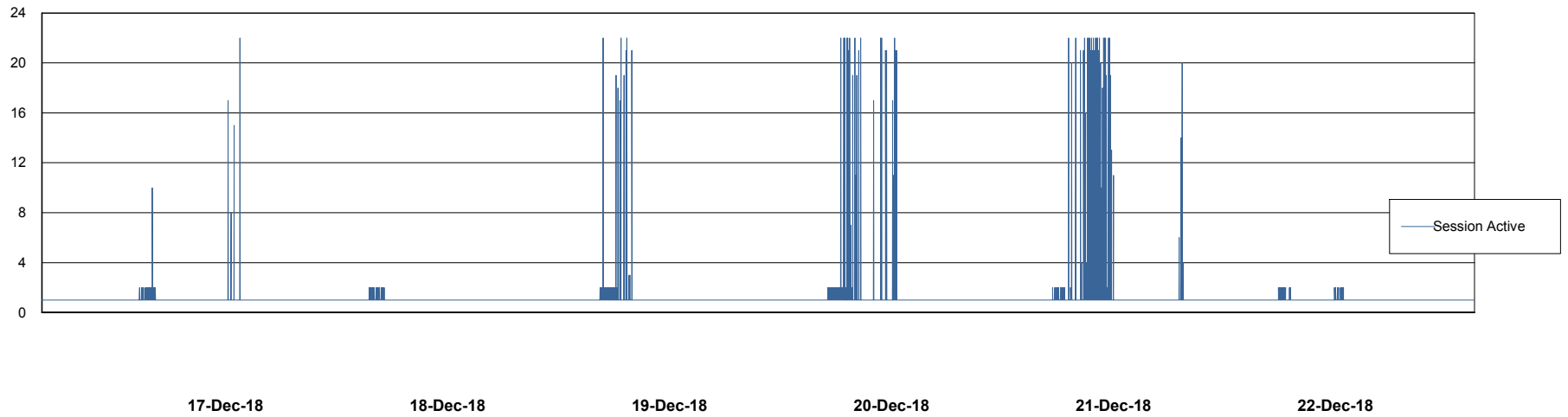
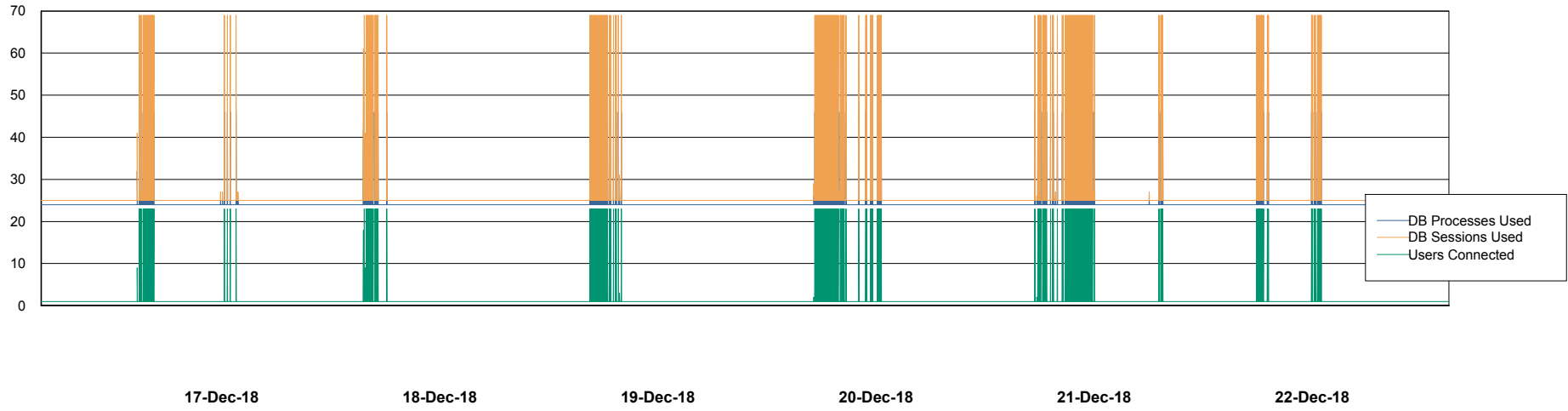


# Weekly SLA Customer Report

Customer AUJ\_Production  
Database ID 41



## Database Performance AUJ\_DB5\_Standby

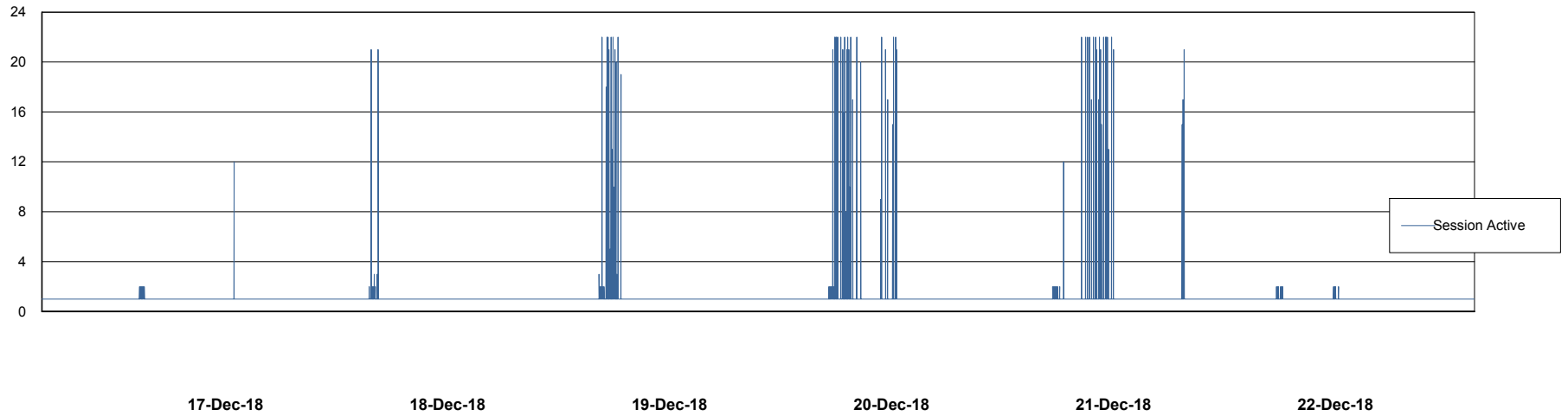
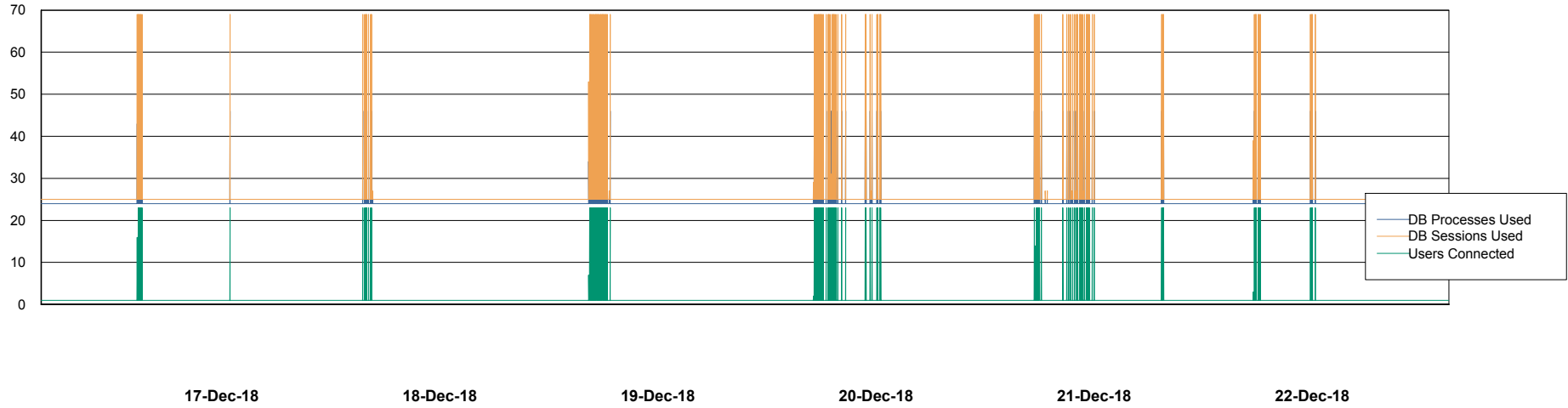


# Weekly SLA Customer Report

Customer AUJ\_Production  
Database ID 41



## Database Performance AUJ\_DB6\_Standby2

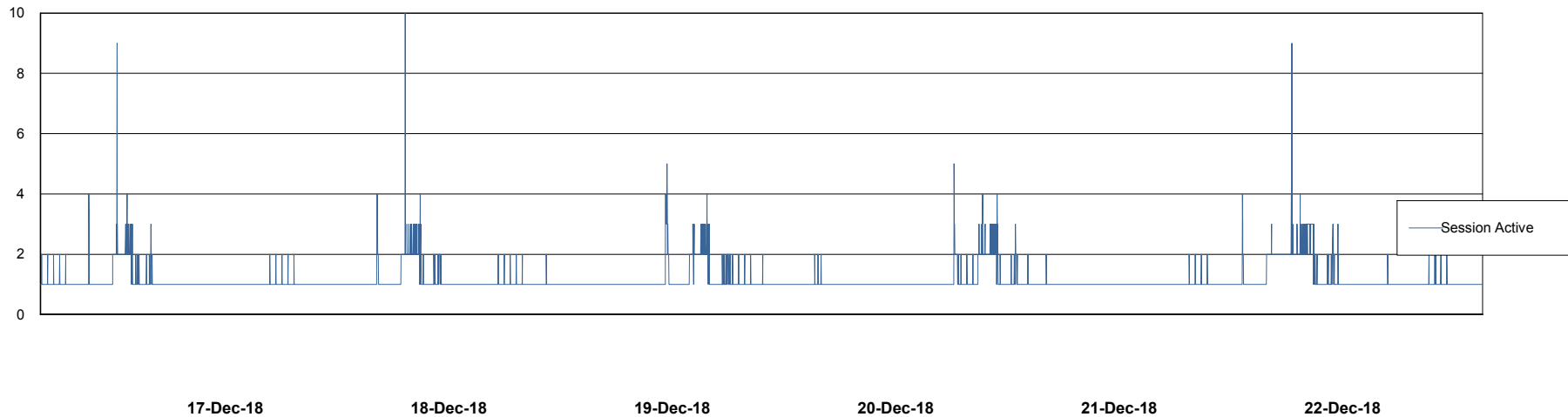
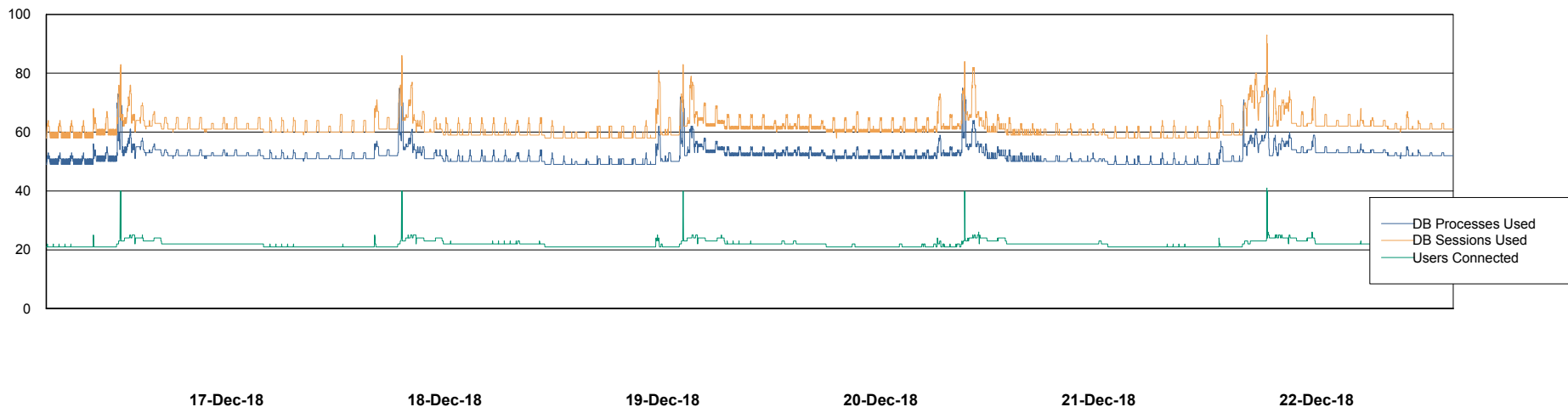


# Weekly SLA Customer Report

Customer AUJ\_Production  
Database ID 41



## Database Performance AUJDB\_BI

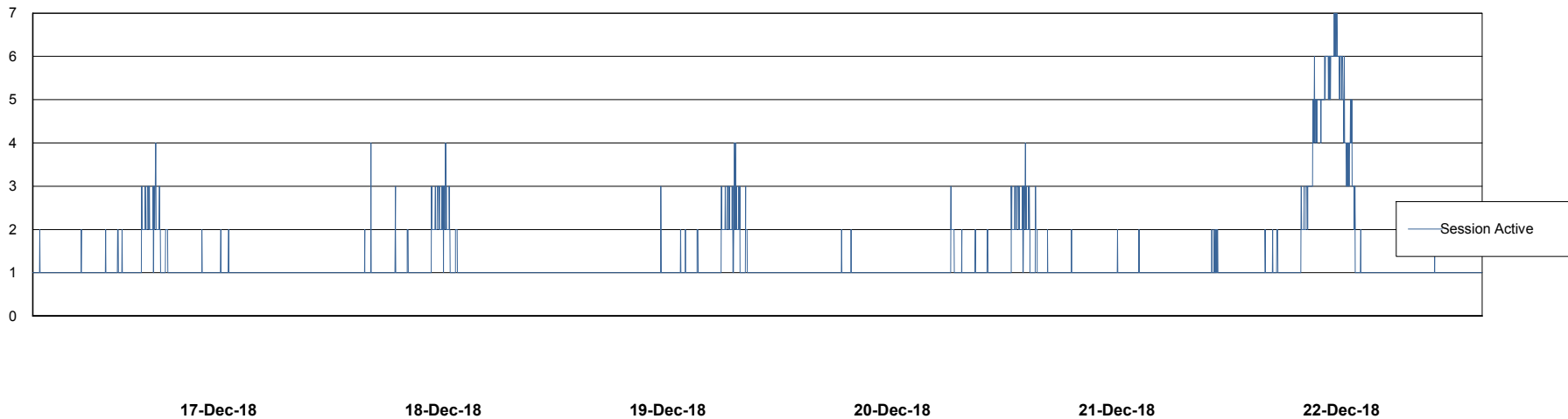
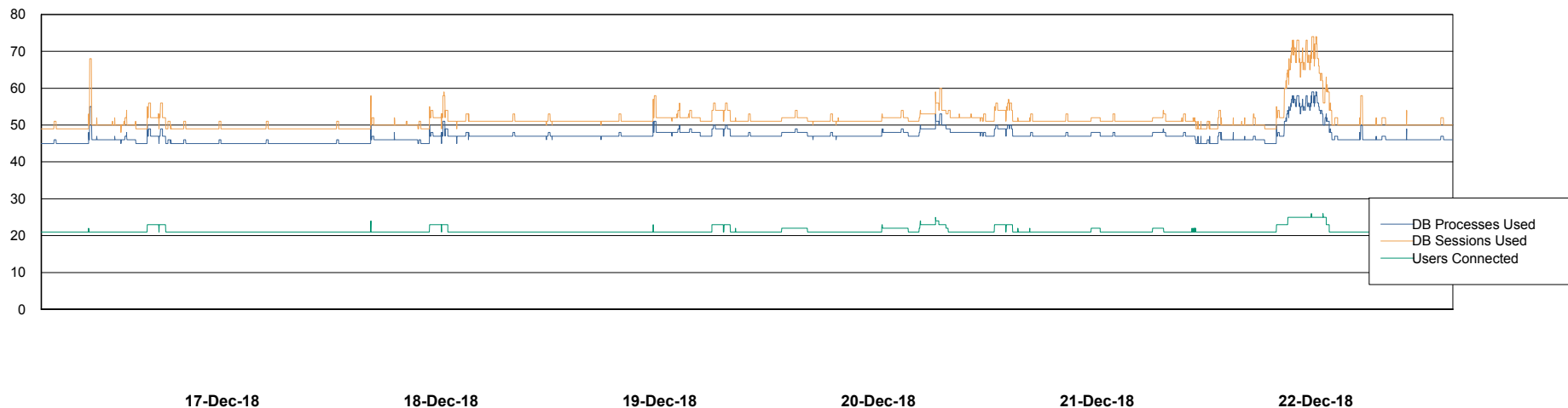


# Weekly SLA Customer Report

Customer AUJ\_Production  
Database ID 41



## Database Performance AUJDB\_BI\_TS1



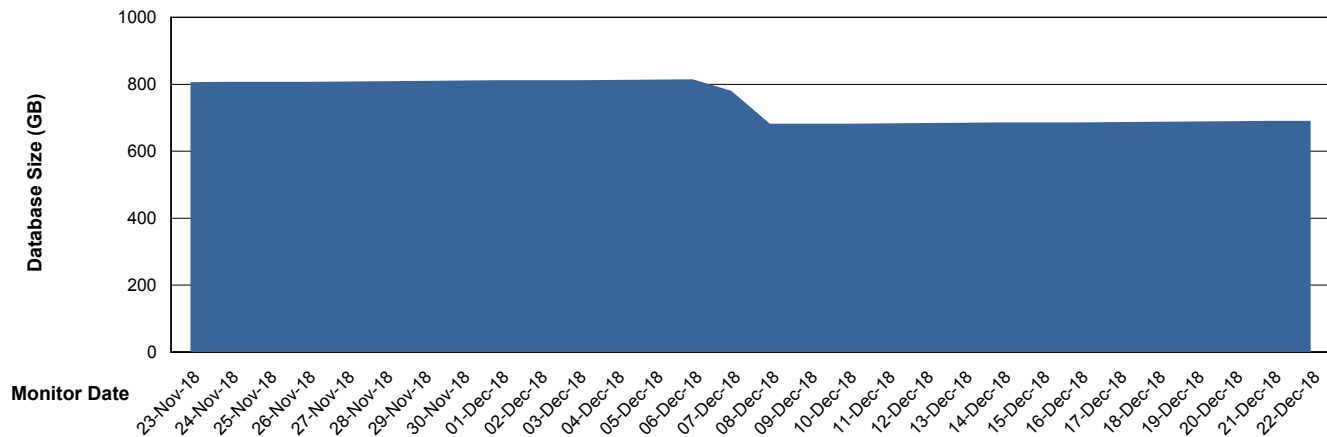
# Weekly SLA Customer Report

Customer AUJ\_Production  
Database ID 41



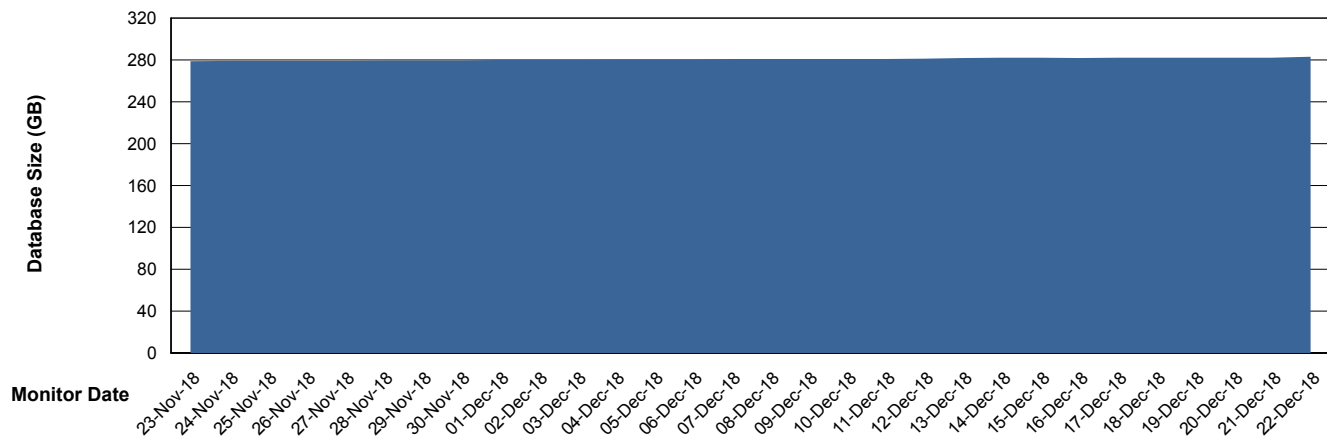
DATABASE SIZE AUJ\_DB4\_Primary

### Database growth over last month



DATABASE SIZE AUJDB\_BI

### Database growth over last month



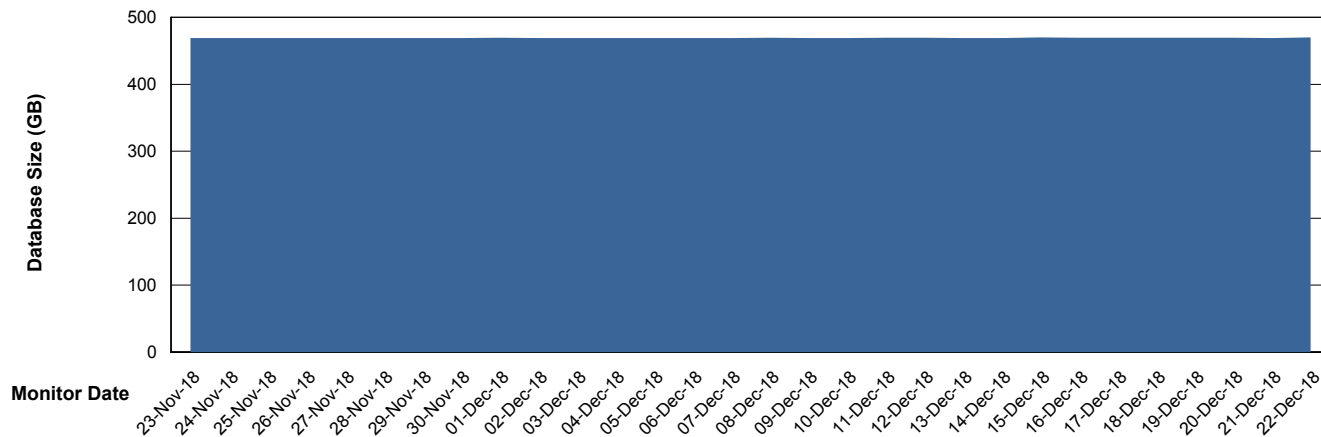
# Weekly SLA Customer Report

Customer AUJ\_Production  
Database ID 41



DATABASE SIZE AUJDB\_BI\_TS1

### Database growth over last month



# Weekly SLA Customer Report

Customer AUJ\_Production  
Database ID 41



Database Tablespace AUJ\_DB4\_Primary

Date	Tablespace Name	Filesize (Gb)	Usedsize (Gb)	Percentage free
22-Dec-18	ABSDATA	469	294	37
	INDX	531	396	25
21-Dec-18	ABSDATA	469	294	37
	INDX	531	396	25
20-Dec-18	ABSDATA	469	293	38
	INDX	531	395	26
19-Dec-18	ABSDATA	469	293	38
	INDX	531	394	26
18-Dec-18	ABSDATA	469	293	38
	INDX	531	394	26
17-Dec-18	ABSDATA	469	292	38
	INDX	531	393	26
16-Dec-18	ABSDATA	469	292	38
	INDX	531	393	26

# Weekly SLA Customer Report

Customer AUJ\_Production  
Database ID 41



## Database Tablespace AUJDB\_BI

Date	Tablespace Name	Filesize (Gb)	Usedsize (Gb)	Percentage free
22-Dec-18	ABSDATA	113	63	44
	INDX	242	215	11
21-Dec-18	ABSDATA	113	63	44
	INDX	242	215	11
20-Dec-18	ABSDATA	113	63	44
	INDX	242	215	11
19-Dec-18	ABSDATA	113	63	44
	INDX	242	215	11
18-Dec-18	ABSDATA	113	62	45
	INDX	242	215	11
17-Dec-18	ABSDATA	113	62	45
	INDX	242	215	11
16-Dec-18	ABSDATA	113	62	45
	INDX	242	215	11

# Weekly SLA Customer Report

Customer AUJ\_Production  
 Database ID 41



Database Tablespace AUJDB\_BI\_TS1

Date	Tablespace Name	Filesize (Gb)	Usedsize (Gb)	Percentage free
22-Dec-18	ABSDATA	282	190	33
	INDX	410	276	33
21-Dec-18	ABSDATA	282	190	33
	INDX	410	276	33
20-Dec-18	ABSDATA	282	190	33
	INDX	410	276	33
19-Dec-18	ABSDATA	282	190	33
	INDX	410	276	33
18-Dec-18	ABSDATA	282	190	33
	INDX	410	276	33
17-Dec-18	ABSDATA	282	190	33
	INDX	410	276	33
16-Dec-18	ABSDATA	282	190	33
	INDX	410	276	33

BI Status and last ETL error for AUJDB\_BI

	Sun 16/12/2018	Mon 17/12/2018	Tue 18/12/2018	Wed 19/12/2018	Thu 20/12/2018	Fri 21/12/2018	Sat 22/12/2018
<b>ABS DataWarehouse ETL Health</b>	OK	OK	OK	OK	OK	OK	OK
<b>ABS DWHStaging ETL Health</b>	OK	OK	OK	OK	OK	OK	OK

BI Status and last ETL error for AUJDB\_BI\_TS1

	Sun 16/12/2018	Mon 17/12/2018	Tue 18/12/2018	Wed 19/12/2018	Thu 20/12/2018	Fri 21/12/2018	Sat 22/12/2018
<b>ABS DataWarehouse ETL Health</b>	OK	OK	OK	OK	OK	OK	Not OK
<b>ABS DWHStaging ETL Health</b>	OK	OK	OK	OK	OK	OK	OK

BI last ETL error for AUJDB\_BI\_TS1

Sat, 22-12-2018 ORA-01722: invalid number

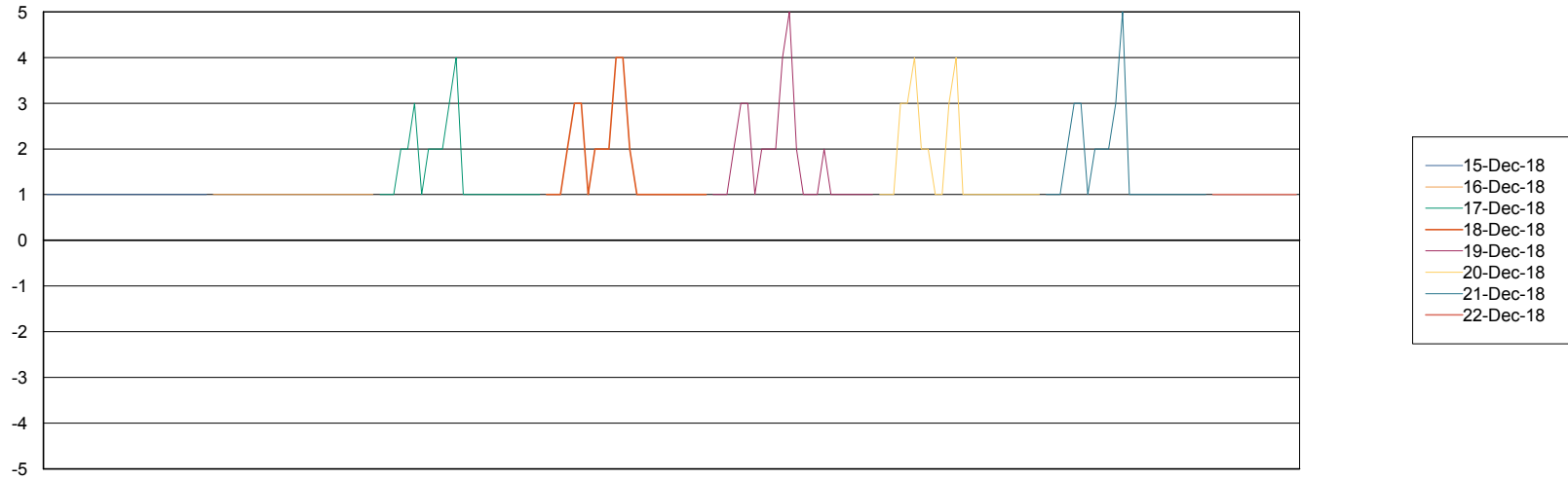
# Weekly SLA Customer Report

Customer AUJ\_Production  
Database ID 41



Standby Database Health AUJ\_Production

### Recovery lag for last 7 days



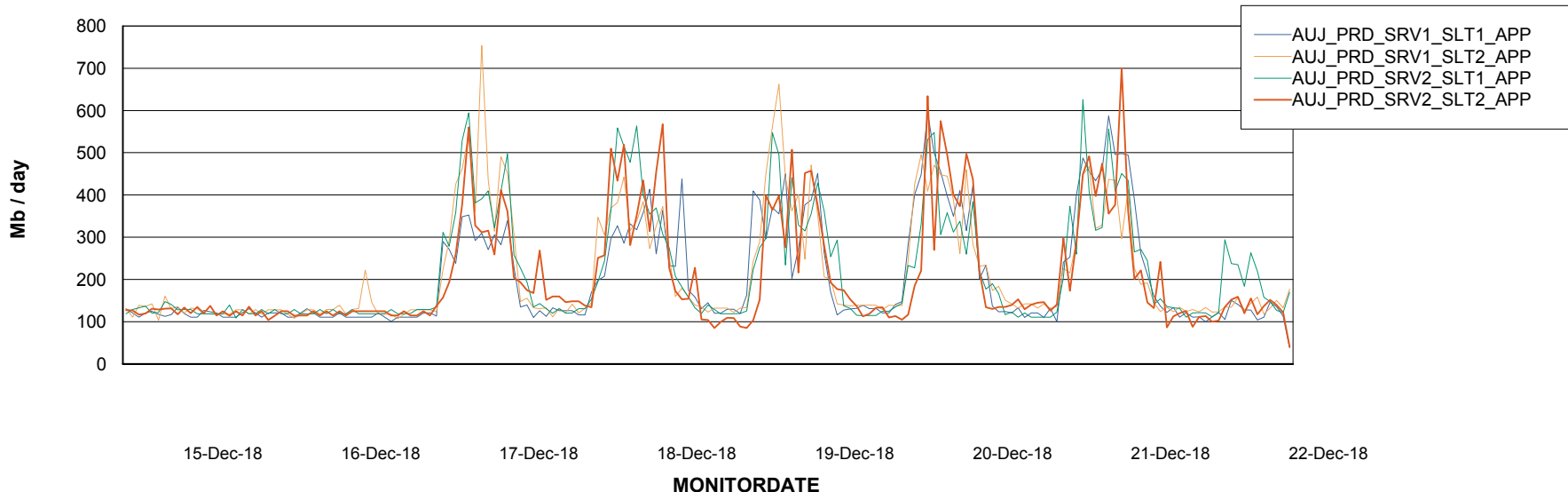
# Weekly SLA Customer Report

Customer AUJ\_Production  
Database ID 41

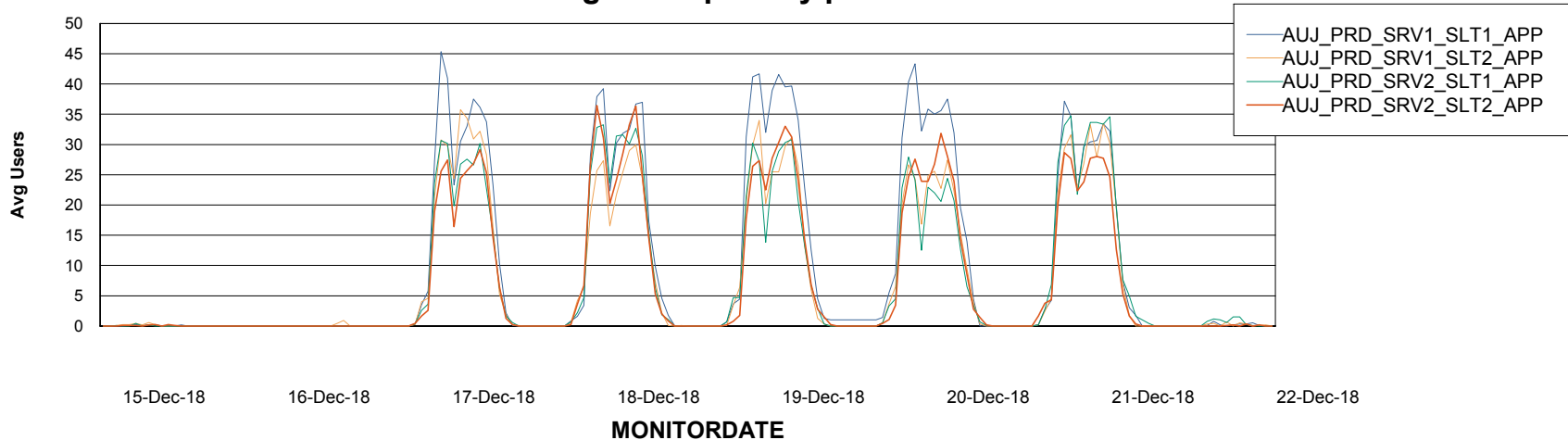


## ABSSolute Application Server Services

### Avg memory used per ABS Server Service



### Avg users per day per ABS server



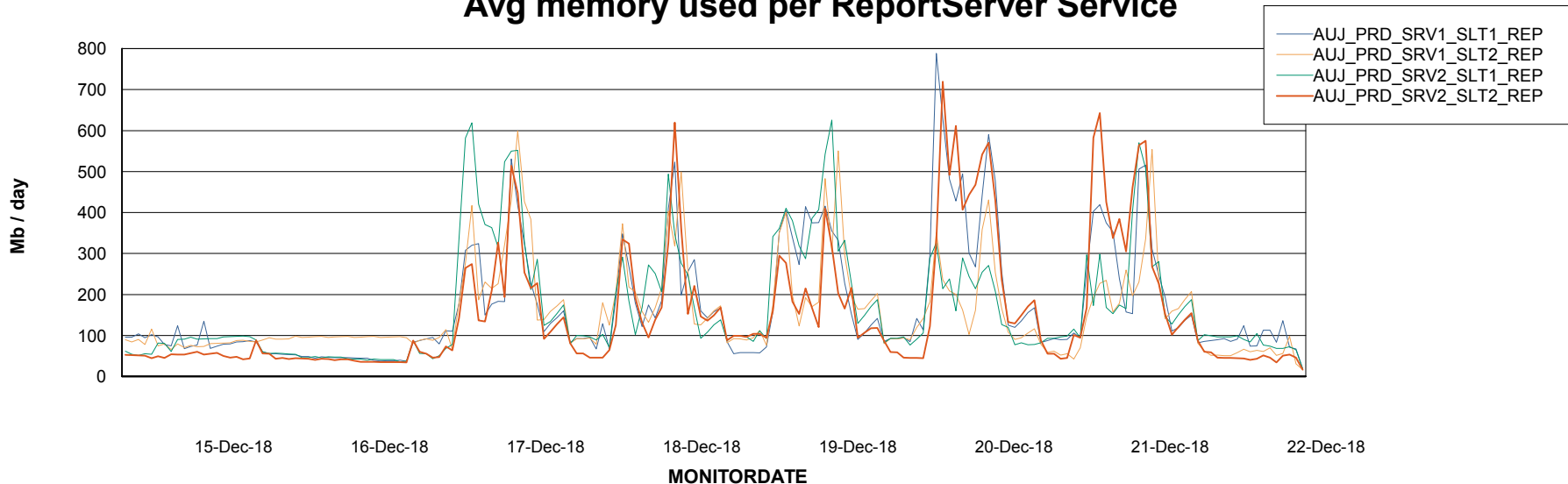
# Weekly SLA Customer Report

Customer AUJ\_Production  
Database ID 41



## ABSolute Application ReportServer Services

### Avg memory used per ReportServer Service



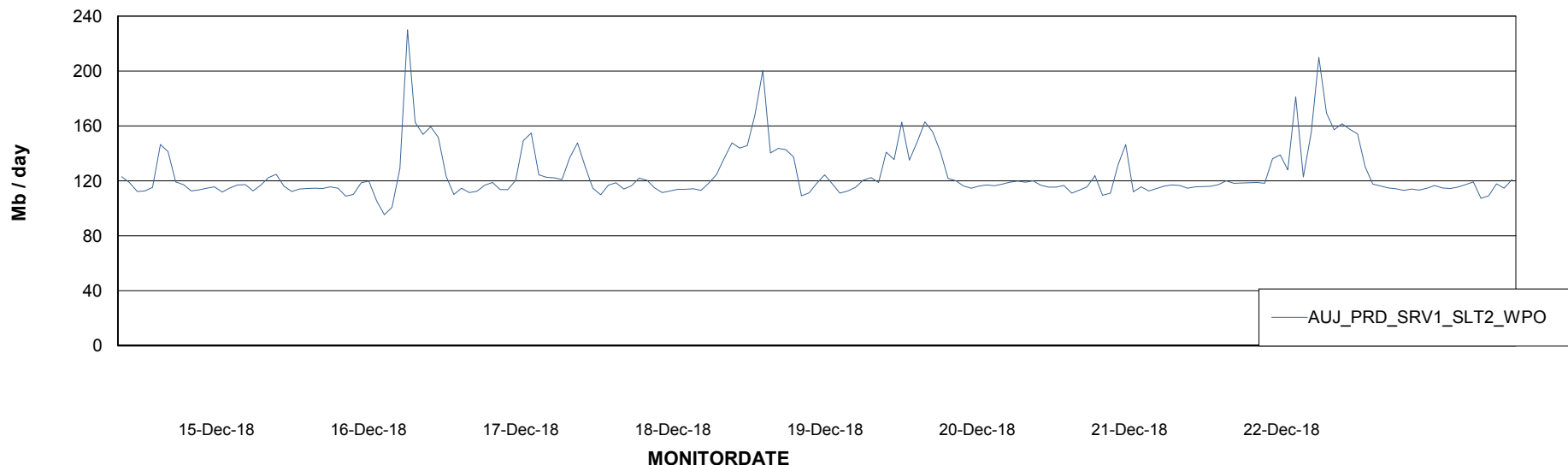
# Weekly SLA Customer Report

Customer AUJ\_Production  
Database ID 41



## ABSSolute Web Component Services

### Avg memory used per ABS Web component



# Weekly SLA Customer Report

Customer AUJ\_Production  
Database ID 41



## Disaster per ABS component

