

# Weekly SLA Customer Report

Customer CUS Production  
Database ID 84



## Harddisk Usage CUS\_ABSBI

	Free disk space on c: (%)	Total disk space on c: (Gb)	Free disk space on d: (%)	Total disk space on d: (Gb)
08-Dec-18	80	199	67	800
07-Dec-18	80	199	67	800
06-Dec-18	80	199	67	800
05-Dec-18	80	199	67	800
04-Dec-18	80	199	67	800
03-Dec-18	80	199	67	800
02-Dec-18	81	199	67	800

## Harddisk Usage CUS\_ABSPROD1

	Free disk space on c: (%)	Total disk space on c: (Gb)
08-Dec-18	64	199
07-Dec-18	64	199
06-Dec-18	64	199
05-Dec-18	64	199
04-Dec-18	64	199
03-Dec-18	64	199
02-Dec-18	64	199

# Weekly SLA Customer Report

Customer CUS Production  
Database ID 84



## Harddisk Usage CUS\_ABSPROD2

	Free disk space on c: (%)	Total disk space on c: (Gb)
08-Dec-18	78	199
07-Dec-18	78	199
06-Dec-18	78	199
05-Dec-18	79	199
04-Dec-18	79	199
03-Dec-18	79	199
02-Dec-18	79	199

## Harddisk Usage CUS\_ABSWEBPROD

	Free disk space on c: (%)	Total disk space on c: (Gb)
08-Dec-18	88	199
07-Dec-18	88	199
06-Dec-18	88	199
05-Dec-18	88	199
04-Dec-18	88	199
03-Dec-18	88	199
02-Dec-18	88	199

# Weekly SLA Customer Report

Customer CUS Production  
Database ID 84



## Harddisk Usage CUS\_PrimaryDBSrv\_ABSDB1

	Free disk space on c: (%)	Total disk space on c: (Gb)	Free disk space on d: (%)	Total disk space on d: (Gb)
08-Dec-18	84	199	81	1,024
07-Dec-18	84	199	81	1,024
06-Dec-18	84	199	82	1,024
05-Dec-18	84	199	83	1,024
04-Dec-18	84	199	83	1,024
03-Dec-18	84	199	84	1,024
02-Dec-18	84	199	84	1,024

## Harddisk Usage CUS\_StandByDBSrv\_ABSDB2

	Free disk space on c: (%)	Total disk space on c: (Gb)	Free disk space on d: (%)	Total disk space on d: (Gb)
08-Dec-18	86	199	86	1,024
07-Dec-18	86	199	86	1,024
06-Dec-18	86	199	86	1,024
05-Dec-18	86	199	86	1,024
04-Dec-18	86	199	86	1,024
03-Dec-18	86	199	87	1,024
02-Dec-18	86	199	87	1,024

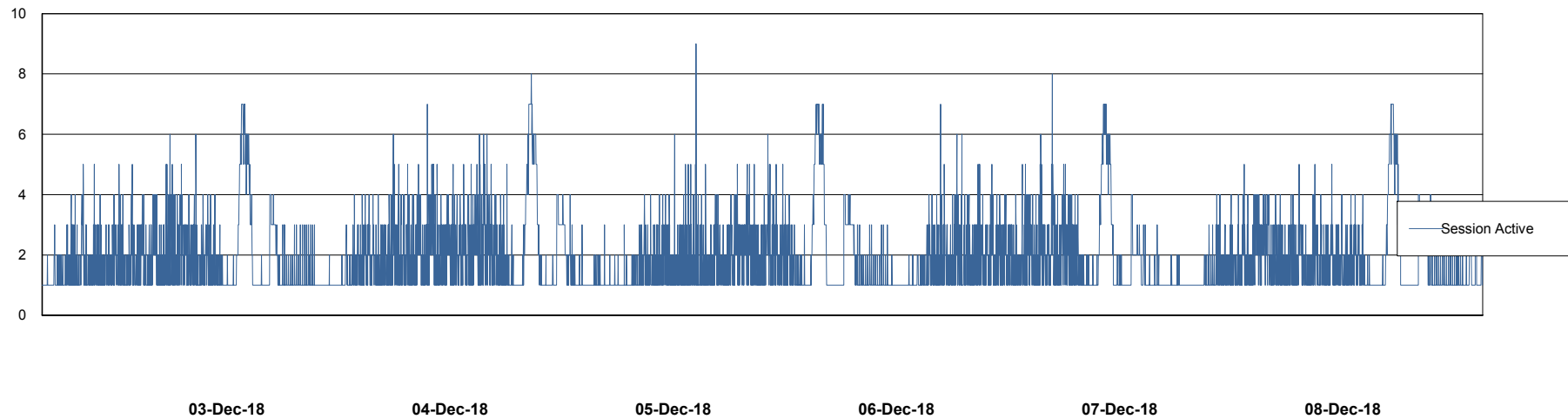
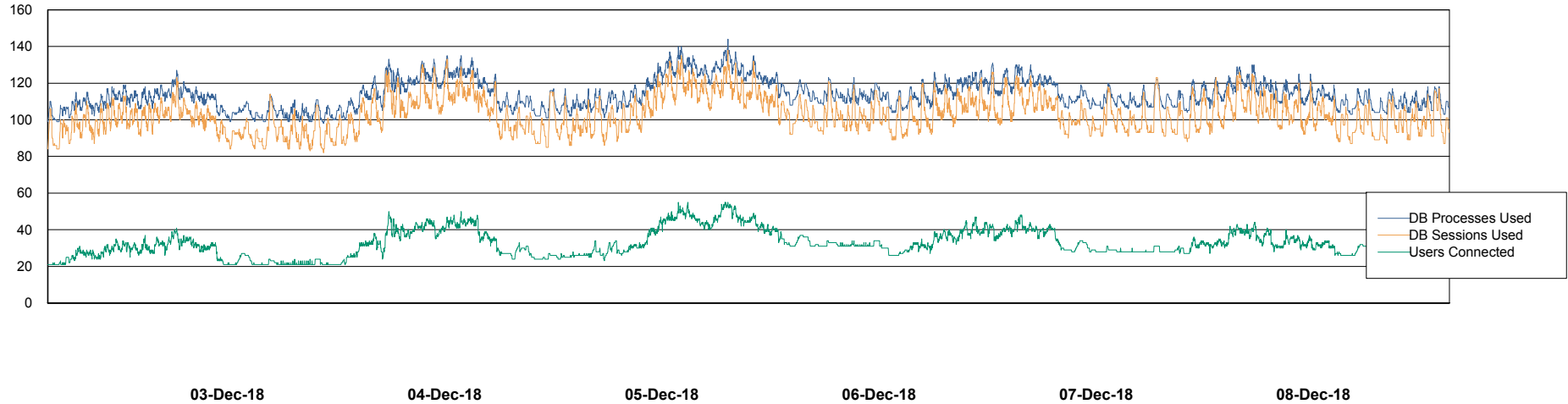
# Weekly SLA Customer Report

Customer CUS Production  
Database ID 84



## Database Performance CUS\_ProdDB\_Primary

DB Processes Max 300  
DB Sessions Max 472



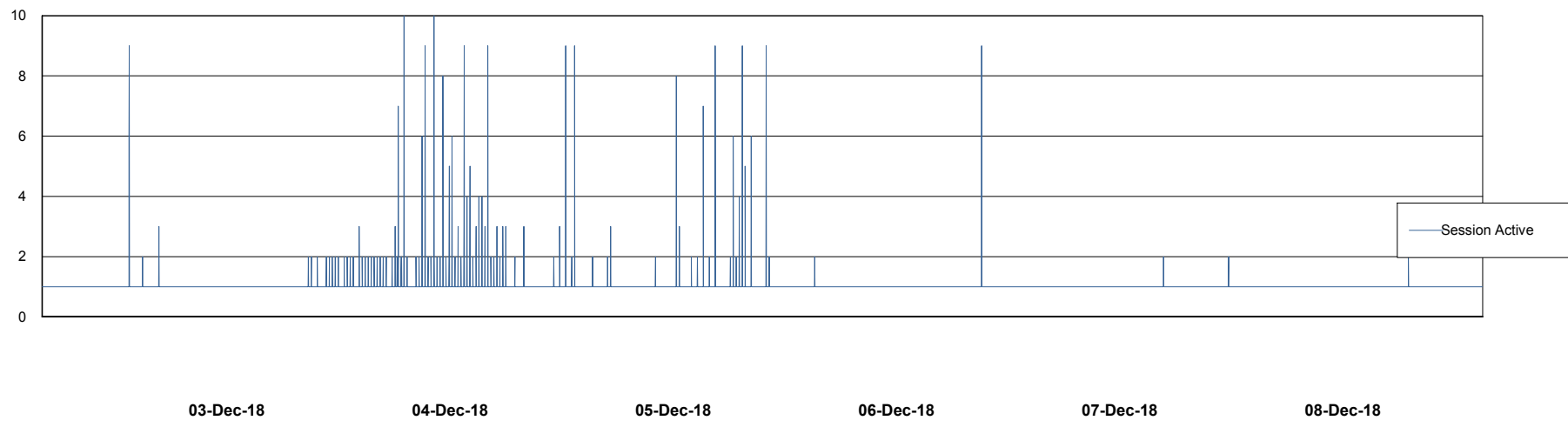
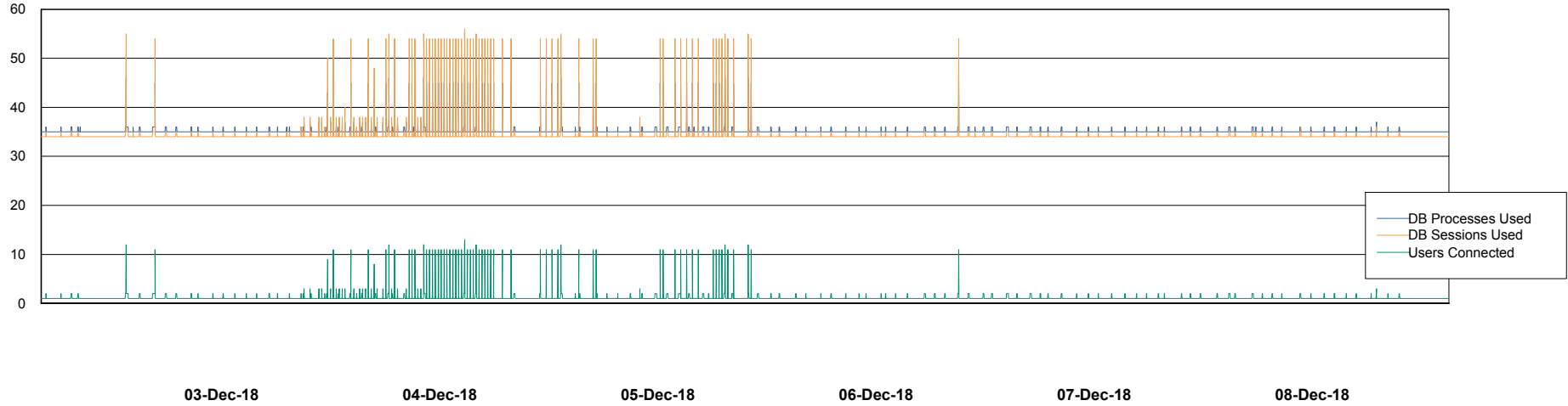
# Weekly SLA Customer Report

Customer CUS Production  
Database ID 84



## Database Performance CUS\_ProdDB\_Standby

DB Processes Max 300  
DB Sessions Max 472



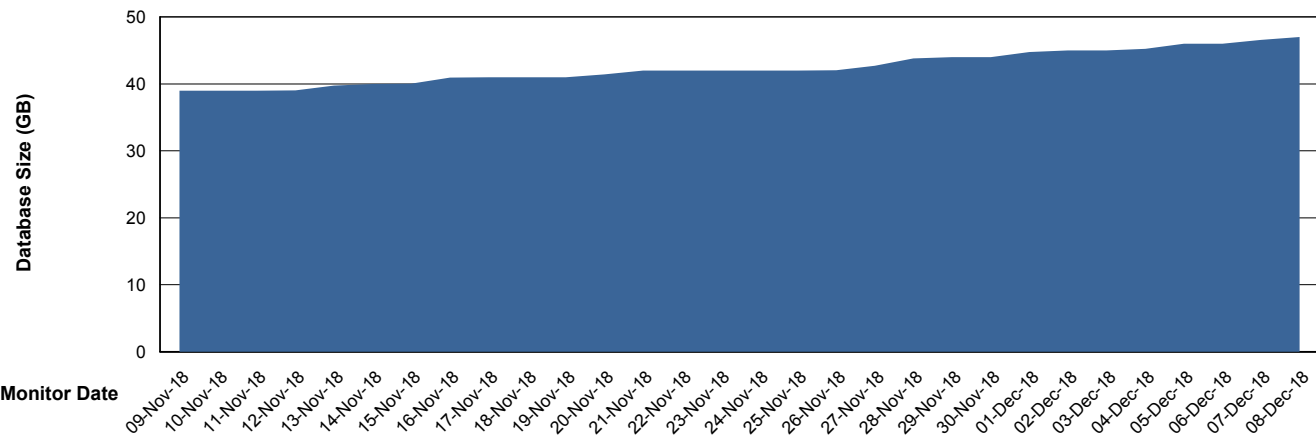
# Weekly SLA Customer Report

Customer CUS Production  
 Database ID 84



DATABASE SIZE CUS\_ProdDB\_Primary

Database growth over last month



Database Tablespace CUS\_ProdDB\_Primary

Date	Tablespace Name	Filesize (Gb)	Usedsize (Gb)	Percentage free
08-Dec-18	ABSDATA	40	39	3
	INDX	12	0	100
07-Dec-18	ABSDATA	40	39	3
	INDX	12	0	100
06-Dec-18	ABSDATA	40	37	8
	INDX	12	0	100
05-Dec-18	ABSDATA	40	37	8
	INDX	12	0	100
04-Dec-18	ABSDATA	40	37	8
	INDX	12	0	100
03-Dec-18	ABSDATA	40	36	10
	INDX	12	0	100
02-Dec-18	ABSDATA	40	36	10
	INDX	12	0	100

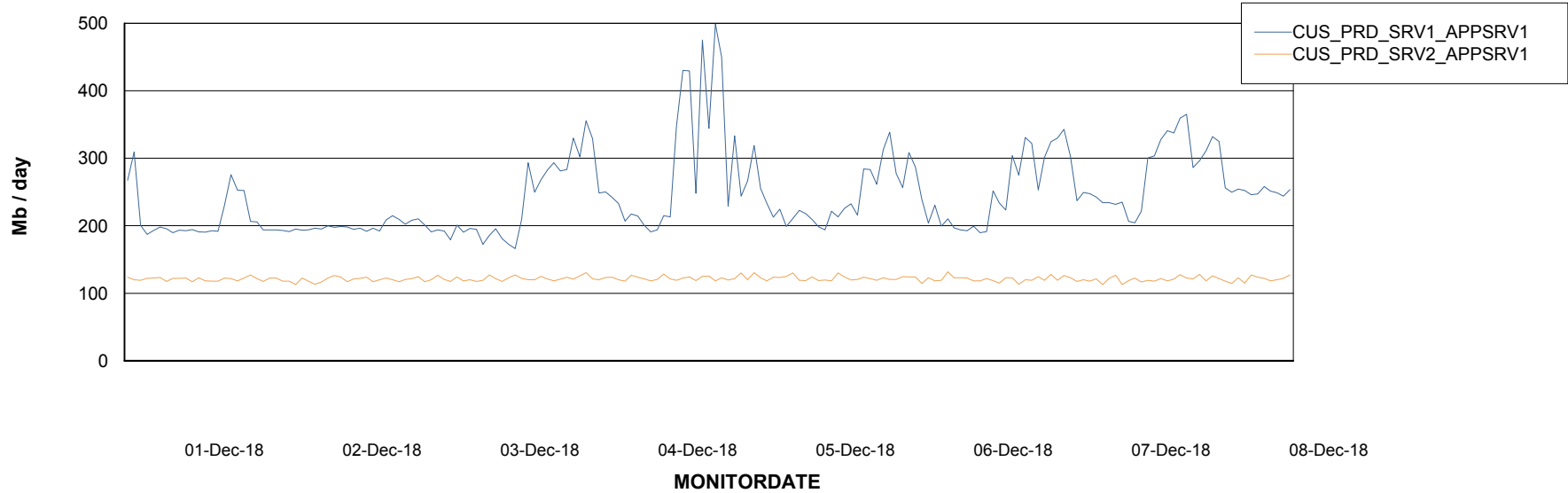
# Weekly SLA Customer Report

Customer CUS Production  
Database ID 84

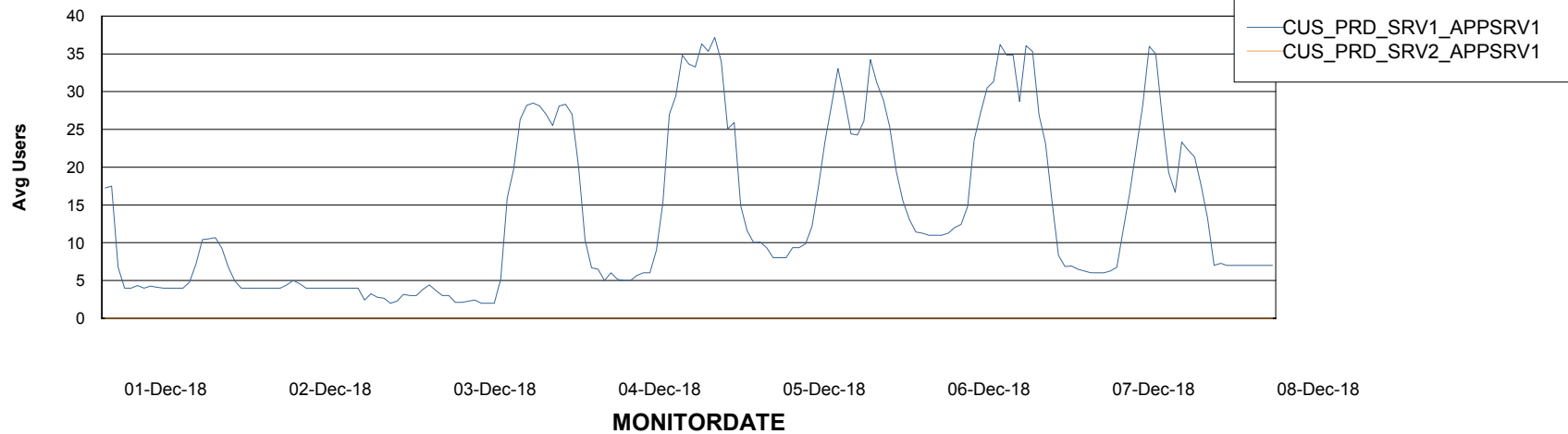


## ABSSolute Application Server Services

### Avg memory used per ABS Server Service



### Avg users per day per ABS server



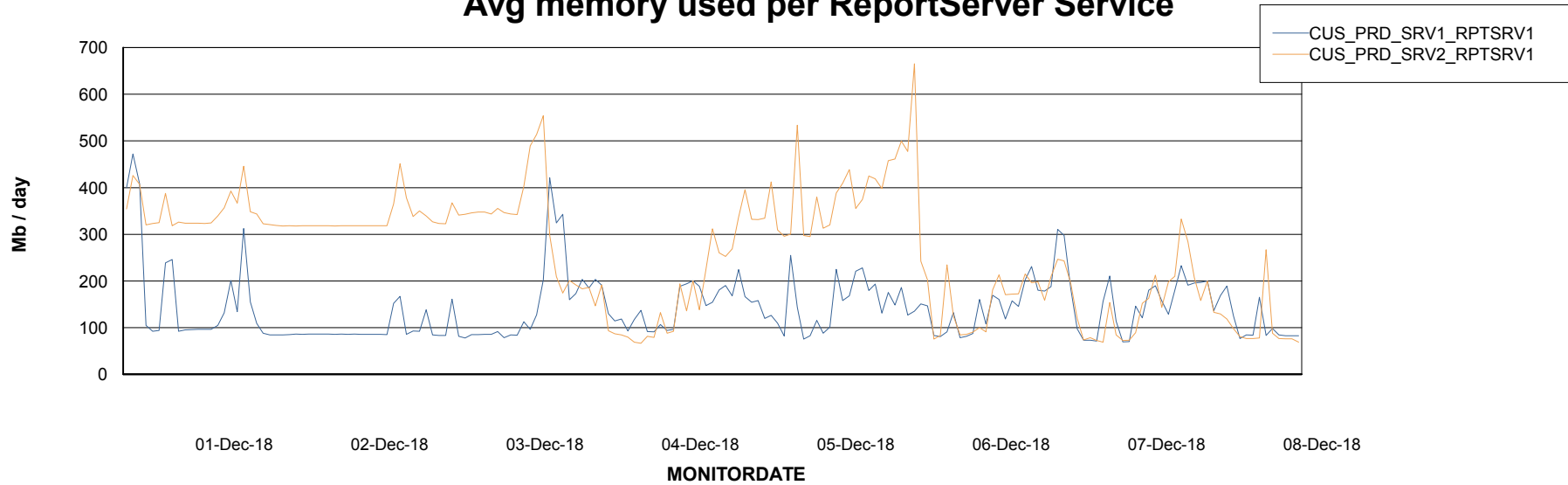
# Weekly SLA Customer Report

Customer CUS Production  
Database ID 84



## ABSSolute Web Component Services

### Avg memory used per ReportServer Service



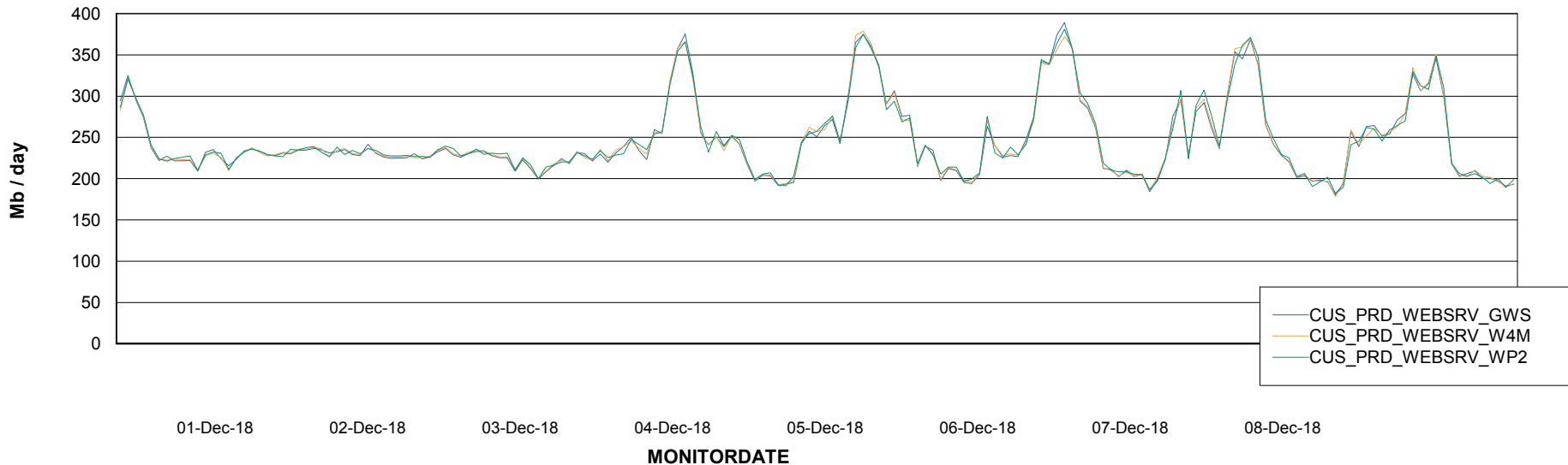
# Weekly SLA Customer Report

Customer CUS Production  
Database ID 84



## ABSSolute Web Component Services

### Avg memory used per ABS Web component



# Weekly SLA Customer Report

Customer CUS Production  
Database ID 84



## Disaster per ABS component

