

# Weekly SLA Customer Report

Customer AUJ\_Production  
Database ID 41



## Harddisk Usage AUJ\_PRD\_ABS\_APP1

	Free disk space on / (%)	Total disk space on / (Gb)	Used disk space on / (Gb)
24-Nov-18	25	241	173
23-Nov-18	25	241	173
22-Nov-18	25	241	173
21-Nov-18	25	241	172
20-Nov-18	25	241	172
19-Nov-18	25	241	172
18-Nov-18	25	241	172

## Harddisk Usage AUJ\_PRD\_ABS\_APP2

	Free disk space on / (%)	Total disk space on / (Gb)	Used disk space on / (Gb)
24-Nov-18	21	241	181
23-Nov-18	21	241	181
22-Nov-18	21	241	181
21-Nov-18	21	241	180
20-Nov-18	21	241	180
19-Nov-18	21	241	180
18-Nov-18	21	241	180

# Weekly SLA Customer Report

Customer AUJ\_Production  
 Database ID 41



Harddisk Usage AUJ\_PRD\_ABS\_APP3

	Free disk space on / (%)	Total disk space on / (Gb)	Used disk space on / (Gb)
24-Nov-18	91	247	22
23-Nov-18	91	247	22
22-Nov-18	91	247	22
21-Nov-18	91	247	22
20-Nov-18	91	247	22
19-Nov-18	91	247	22
18-Nov-18	91	247	22

Harddisk Usage AUJ\_PRD\_ORACLE4

	Free disk space on / (%)	Total disk space on / (Gb)	Used disk space on / (Gb)	Free disk space on /bk (%)	Total disk space on /bk (Gb)	Used disk space on /bk (Gb)	Free disk space on /data (%)	Total disk space on /data (Gb)	Used disk space on /da /data
24-Nov-18	98	534	12	63	4,436	1,559	75	4,436	1,061
23-Nov-18	98	534	12	63	4,436	1,578	75	4,436	1,061
22-Nov-18	98	534	12	63	4,436	1,577	75	4,436	1,061
21-Nov-18	98	534	12	63	4,436	1,576	75	4,436	1,061
20-Nov-18	98	534	12	63	4,436	1,575	75	4,436	1,061
19-Nov-18	98	534	12	63	4,436	1,573	75	4,436	1,061
18-Nov-18	98	534	12	63	4,436	1,566	75	4,436	1,061

# Weekly SLA Customer Report

Customer AUJ\_Production  
Database ID 41



## Harddisk Usage AUJ\_PRD\_ORACLE5

	Free disk space on / (%)	Total disk space on / (Gb)	Used disk space on / (Gb)	Free disk space on /bk (%)	Total disk space on /bk (Gb)	Used disk space on /bk (Gb)	Free disk space on /data (%)	Total disk space on /data (Gb)	Used disk space on /da /data
24-Nov-18	98	534	12	95	4,436	231	75	4,436	1,064
23-Nov-18	98	534	12	94	4,436	235	75	4,436	1,064
22-Nov-18	98	534	12	94	4,436	236	75	4,436	1,064
21-Nov-18	98	534	12	94	4,436	237	75	4,436	1,064
20-Nov-18	98	534	12	94	4,436	237	75	4,436	1,064
19-Nov-18	98	534	12	95	4,436	229	75	4,436	1,064
18-Nov-18	98	534	12	95	4,436	224	75	4,436	1,064

## Harddisk Usage AUJ\_PRD\_ORACLE6

	Free disk space on / (%)	Total disk space on / (Gb)	Used disk space on / (Gb)	Free disk space on /bk (%)	Total disk space on /bk (Gb)	Used disk space on /bk (Gb)	Free disk space on /data (%)	Total disk space on /data (Gb)	Used disk space on /da /data
24-Nov-18	87	534	66	87	534	66	75	4,436	1,056
23-Nov-18	86	534	70	86	534	70	75	4,436	1,056
22-Nov-18	86	534	71	86	534	71	75	4,436	1,056
21-Nov-18	86	534	72	86	534	72	75	4,436	1,056
20-Nov-18	86	534	70	86	534	70	75	4,436	1,056
19-Nov-18	88	534	61	88	534	61	75	4,436	1,056
18-Nov-18	89	534	57	89	534	57	75	4,436	1,056

# Weekly SLA Customer Report

Customer AUJ\_Production  
Database ID 41



Harddisk Usage AUJ\_PRD\_ORACLE\_BI1

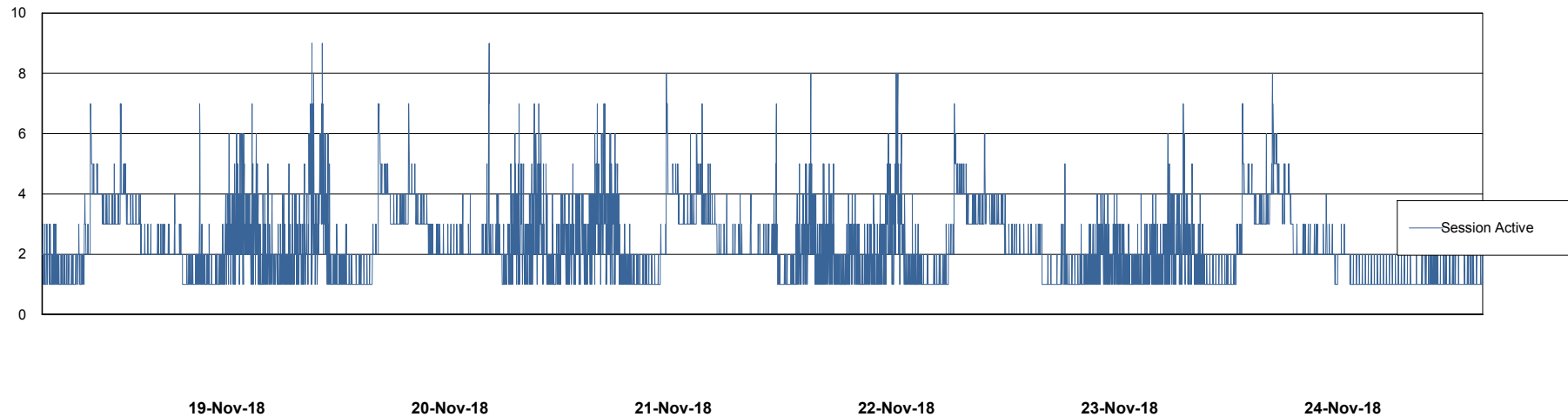
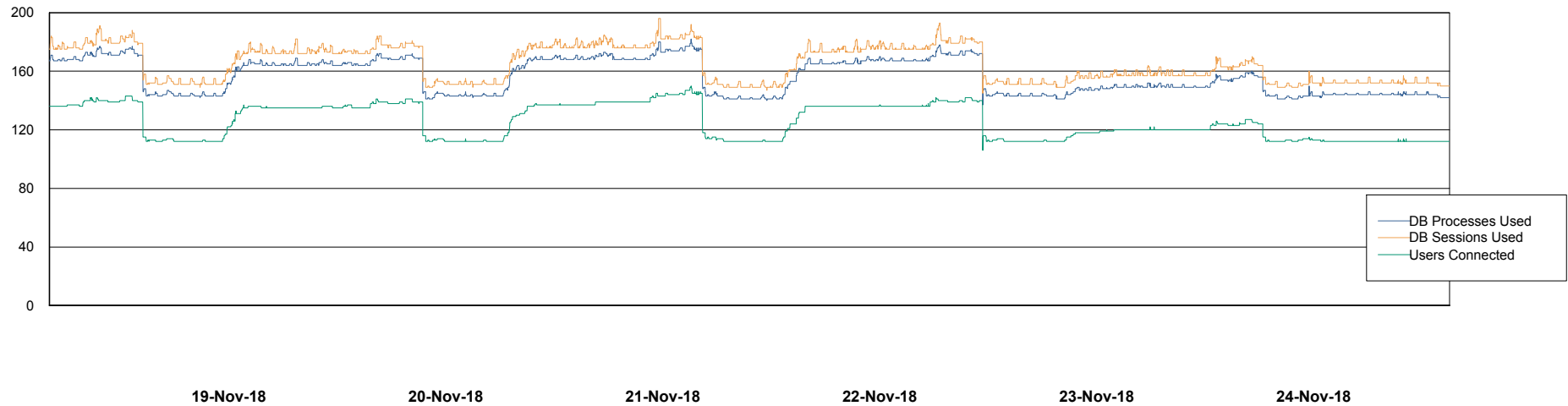
	Free disk space on / (%)	Total disk space on / (Gb)	Used disk space on / (Gb)
24-Nov-18	8	526	458
23-Nov-18	9	526	455
22-Nov-18	9	526	455
21-Nov-18	9	526	455
20-Nov-18	9	526	454
19-Nov-18	9	526	453
18-Nov-18	8	526	457

# Weekly SLA Customer Report

Customer AUJ\_Production  
Database ID 41



## Database Performance AUJ\_DB4\_Primary

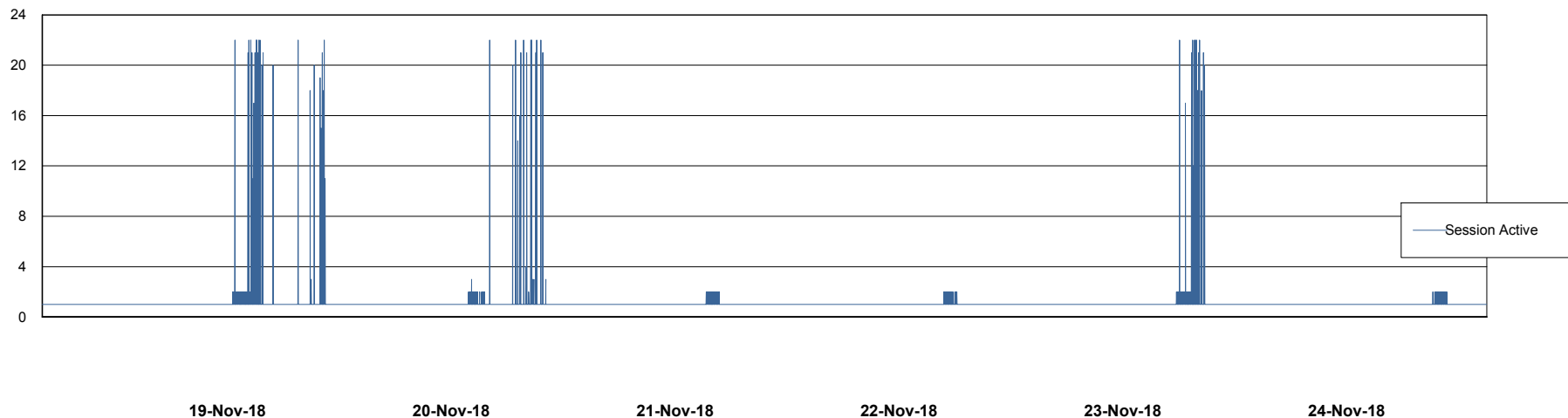
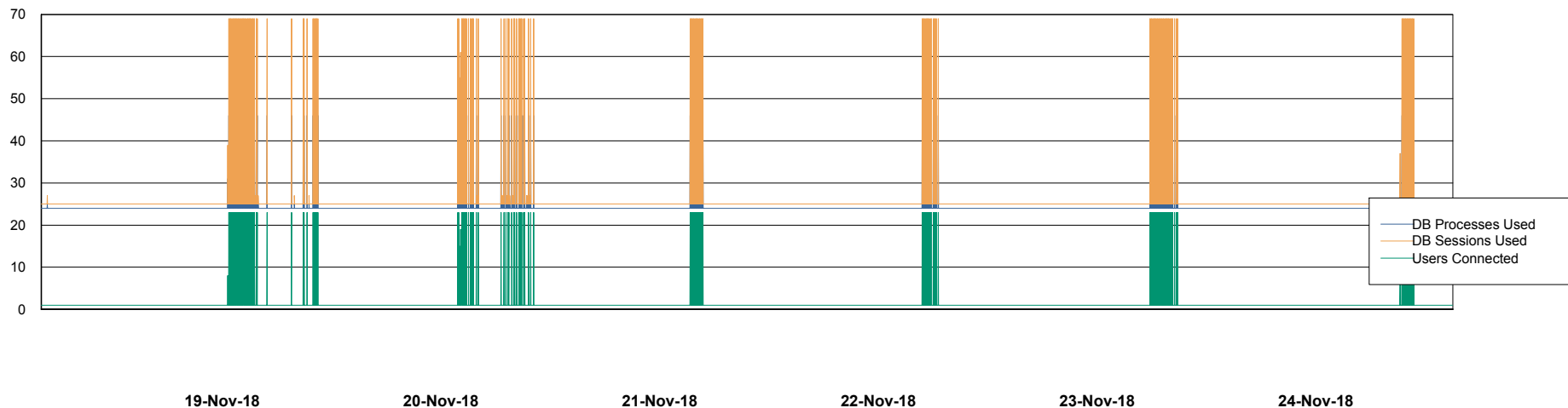


# Weekly SLA Customer Report

Customer AUJ\_Production  
Database ID 41



## Database Performance AUJ\_DB5\_Standby

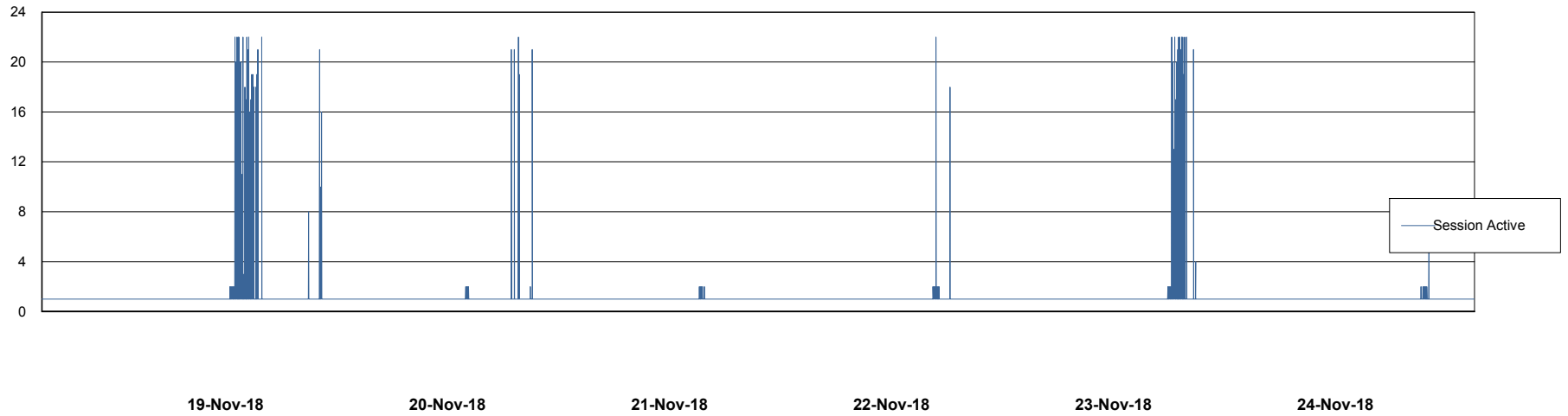
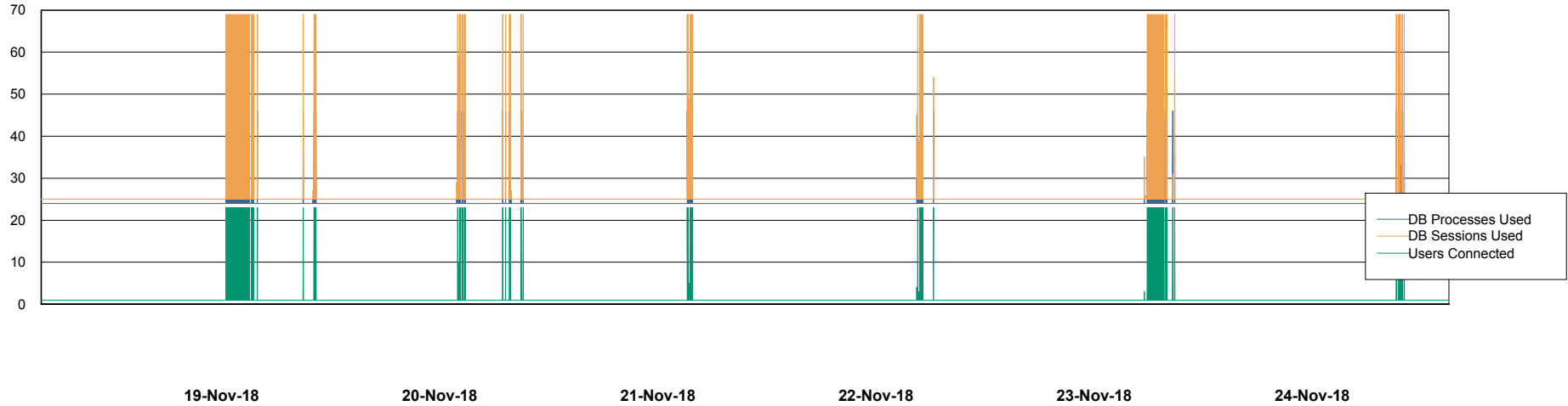


# Weekly SLA Customer Report

Customer AUJ\_Production  
Database ID 41



## Database Performance AUJ\_DB6\_Standby2

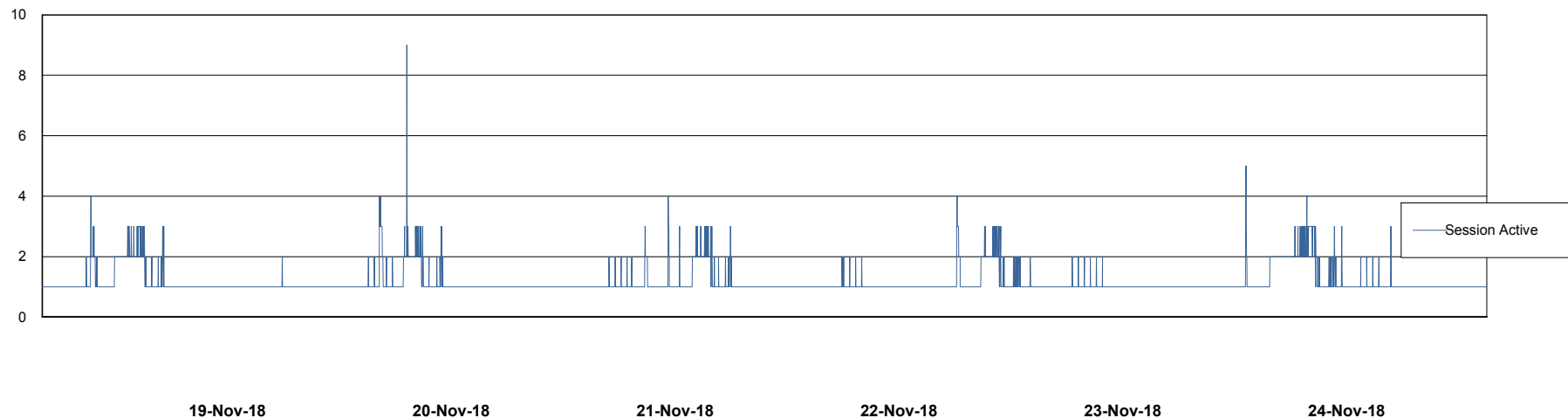
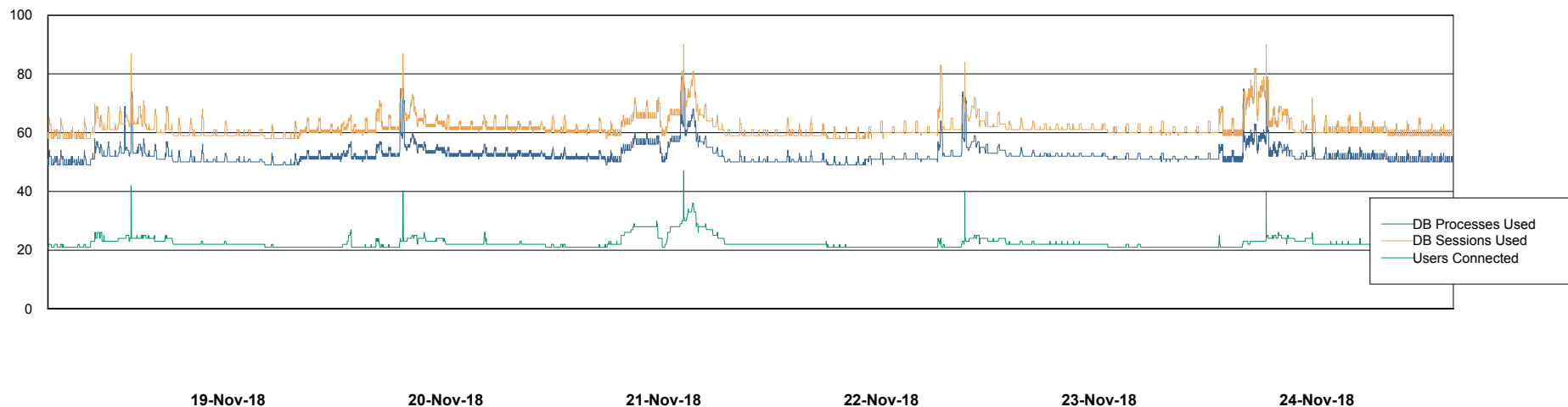


# Weekly SLA Customer Report

Customer AUJ\_Production  
Database ID 41



## Database Performance AUJDB\_BI

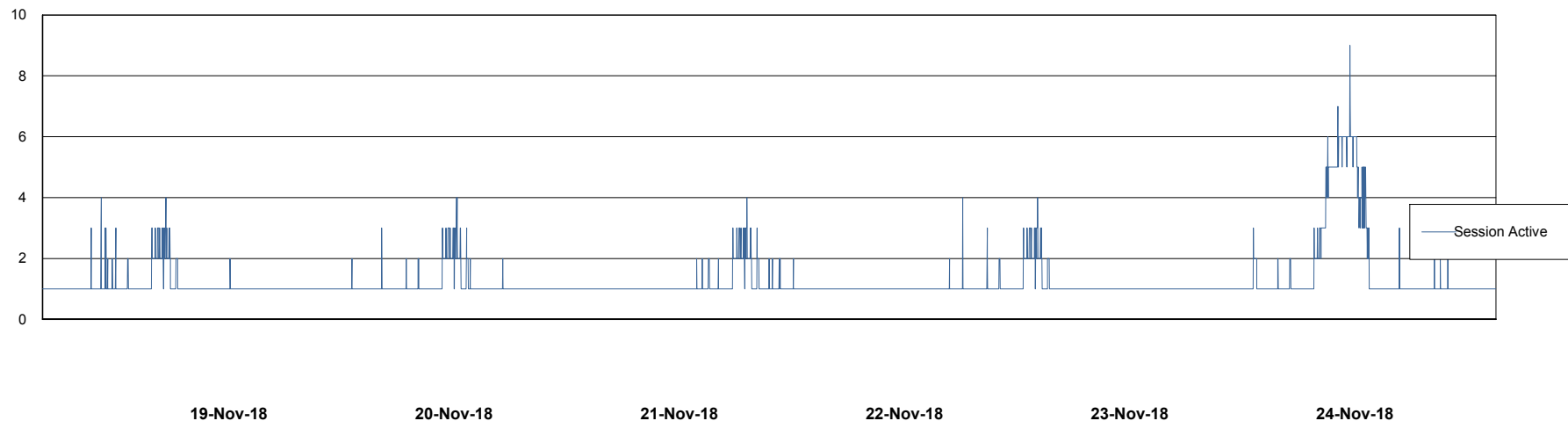
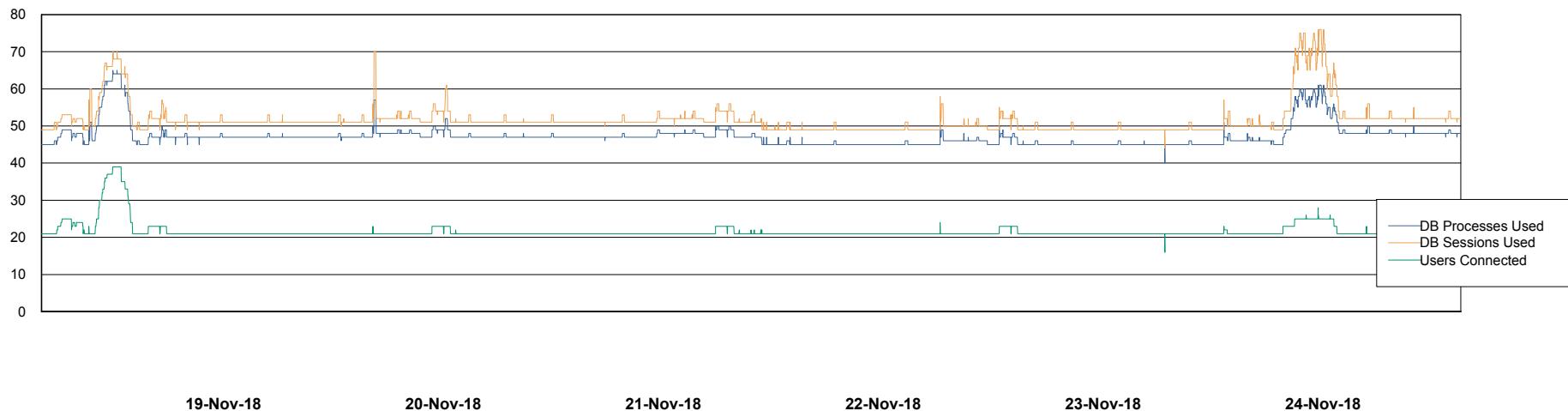


# Weekly SLA Customer Report

Customer AUJ\_Production  
Database ID 41



## Database Performance AUJDB\_BI\_TS1



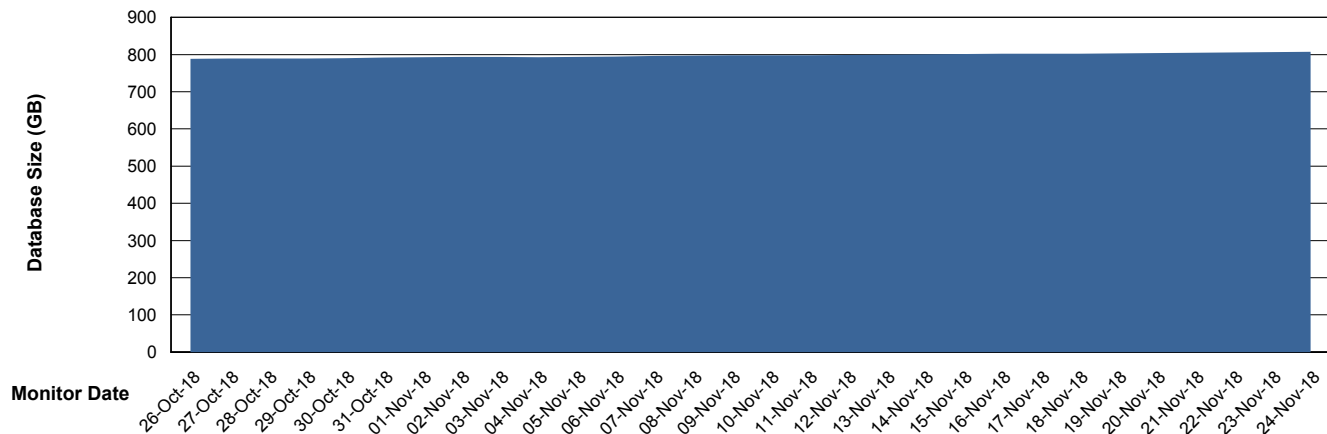
# Weekly SLA Customer Report

Customer AUJ\_Production  
 Database ID 41



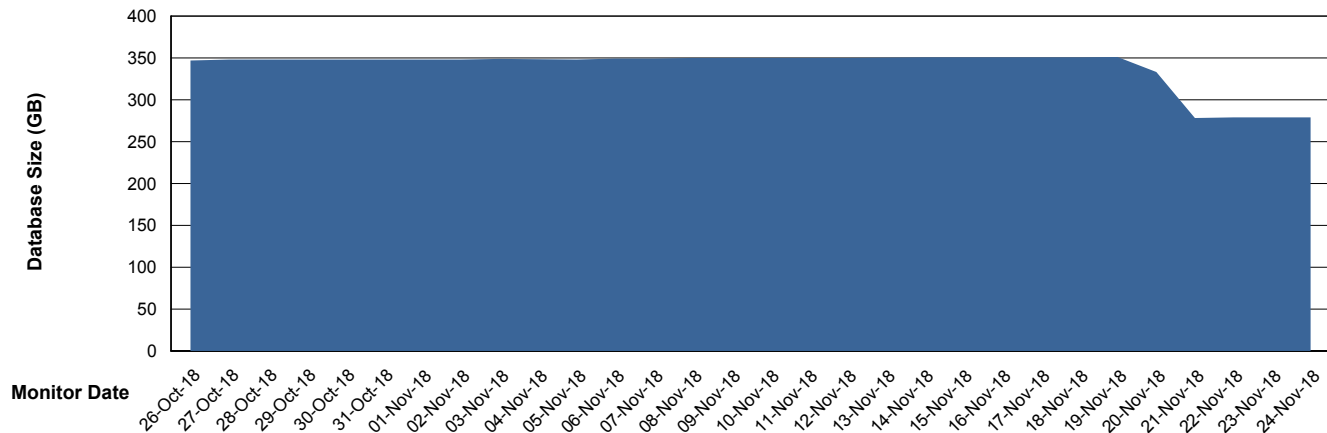
DATABASE SIZE AUJ\_DB4\_Primary

### Database growth over last month



DATABASE SIZE AUJDB\_BI

### Database growth over last month



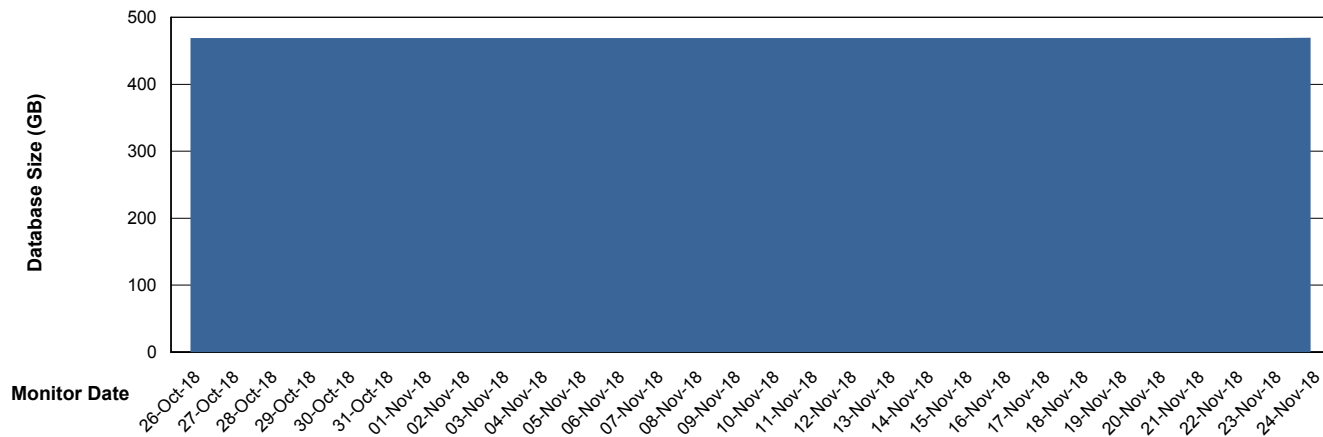
# Weekly SLA Customer Report

Customer AUJ\_Production  
Database ID 41



DATABASE SIZE AUJDB\_BI\_TS1

### Database growth over last month



# Weekly SLA Customer Report

Customer AUJ\_Production  
Database ID 41



Database Tablespace AUJ\_DB4\_Primary

Date	Tablespace Name	Filesize (Gb)	Usedsize (Gb)	Percentage free
24-Nov-18	ABSDATA	469	370	21
	INDX	531	435	18
23-Nov-18	ABSDATA	469	370	21
	INDX	531	435	18
22-Nov-18	ABSDATA	469	370	21
	INDX	531	435	18
21-Nov-18	ABSDATA	469	369	21
	INDX	531	435	18
20-Nov-18	ABSDATA	469	369	21
	INDX	531	434	18
19-Nov-18	ABSDATA	469	369	21
	INDX	531	433	18
18-Nov-18	ABSDATA	469	368	22
	INDX	531	433	18

# Weekly SLA Customer Report

Customer AUJ\_Production  
 Database ID 41



Database Tablespace AUJDB\_BI

Date	Tablespace Name	Filesize (Gb)	Usedsize (Gb)	Percentage free
24-Nov-18	ABSDATA	113	62	45
	INDX	242	212	12
23-Nov-18	ABSDATA	113	62	45
	INDX	242	212	12
22-Nov-18	ABSDATA	113	62	45
	INDX	242	212	12
21-Nov-18	ABSDATA	113	62	45
	INDX	242	212	12
20-Nov-18	ABSDATA	113	109	4
	INDX	242	238	2
19-Nov-18	ABSDATA	113	109	4
	INDX	242	238	2
18-Nov-18	ABSDATA	113	108	4
	INDX	242	238	2

# Weekly SLA Customer Report

Customer AUJ\_Production  
 Database ID 41



Database Tablespace AUJDB\_BI\_TS1

Date	Tablespace Name	Filesize (Gb)	Usedsize (Gb)	Percentage free
24-Nov-18	ABSDATA	282	189	33
	INDX	410	276	33
23-Nov-18	ABSDATA	282	189	33
	INDX	410	276	33
22-Nov-18	ABSDATA	282	189	33
	INDX	410	276	33
21-Nov-18	ABSDATA	282	189	33
	INDX	410	276	33
20-Nov-18	ABSDATA	282	189	33
	INDX	410	276	33
19-Nov-18	ABSDATA	282	189	33
	INDX	410	276	33
18-Nov-18	ABSDATA	282	189	33
	INDX	410	276	33

BI Status and last ETL error for AUJDB\_BI

	Sun 18/11/2018	Mon 19/11/2018	Tue 20/11/2018	Wed 21/11/2018	Thu 22/11/2018	Fri 23/11/2018	Sat 24/11/2018
<b>ABS DataWarehouse ETL Health</b>	OK	OK	OK	OK	OK	OK	OK
<b>ABS DWHStaging ETL Health</b>	OK	OK	OK	OK	OK	OK	OK

BI Status and last ETL error for AUJDB\_BI\_TS1

	Sun 18/11/2018	Mon 19/11/2018	Tue 20/11/2018	Wed 21/11/2018	Thu 22/11/2018	Fri 23/11/2018	Sat 24/11/2018
<b>ABS DataWarehouse ETL Health</b>	OK	OK	OK	OK	OK	OK	Not OK
<b>ABS DWHStaging ETL Health</b>	OK	OK	OK	OK	OK	OK	OK

BI last ETL error for AUJDB\_BI\_TS1

Sat, 24-11-2018 ORA-01722: invalid number

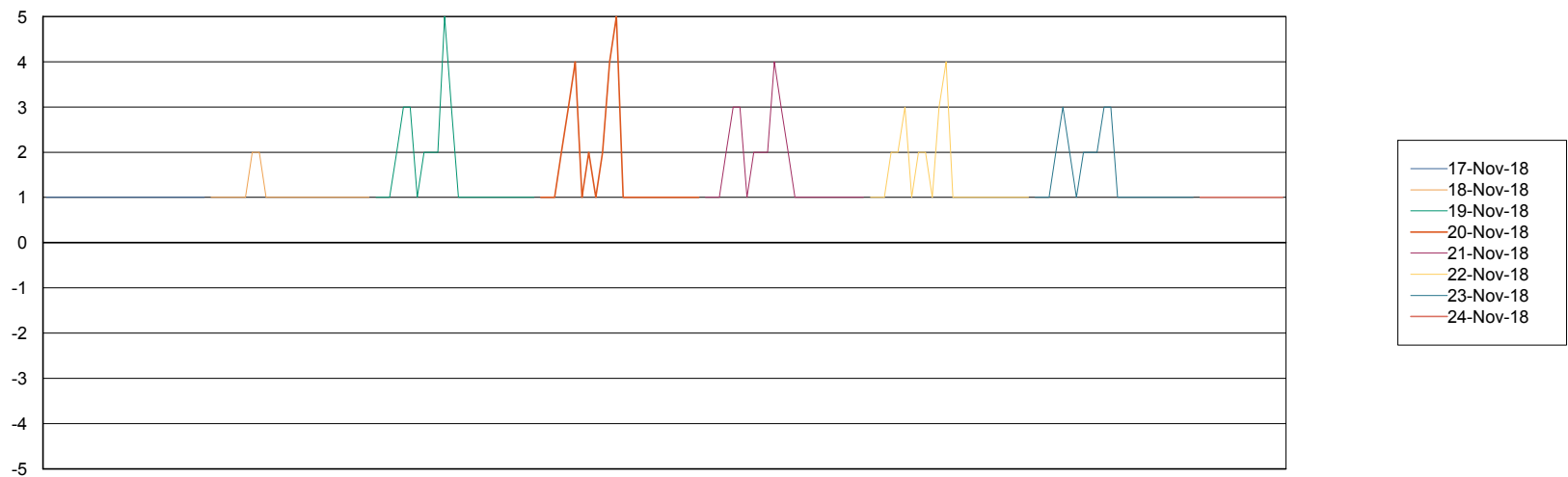
# Weekly SLA Customer Report

Customer AUJ\_Production  
Database ID 41



Standby Database Health AUJ\_Production

### Recovery lag for last 7 days



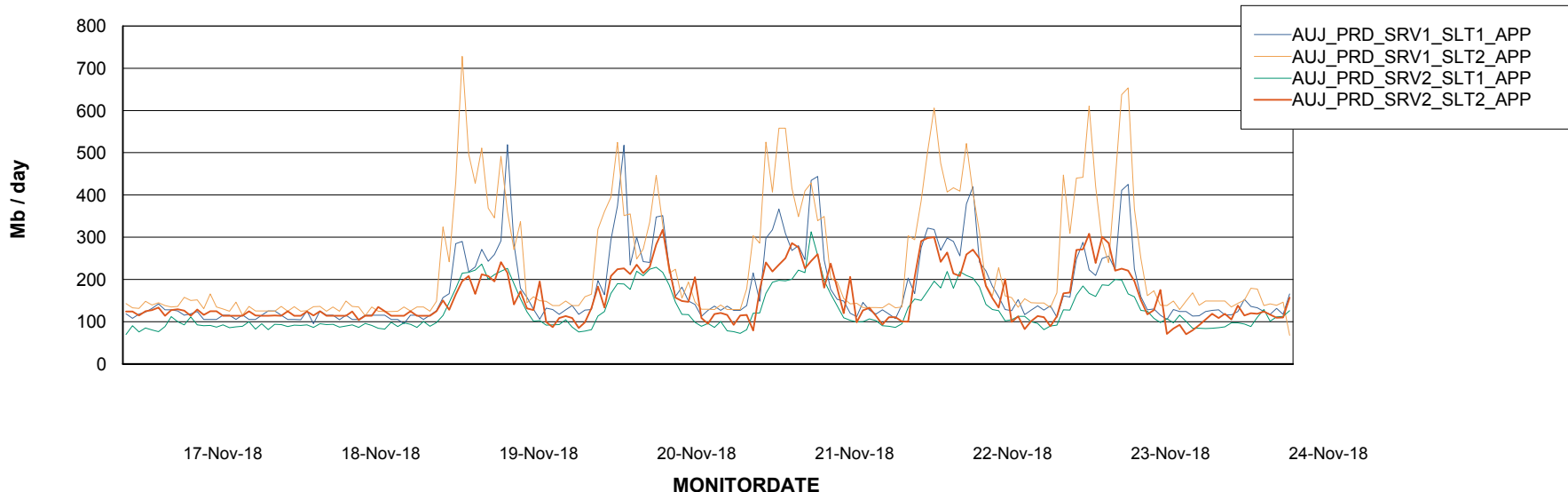
# Weekly SLA Customer Report

Customer AUJ\_Production  
Database ID 41

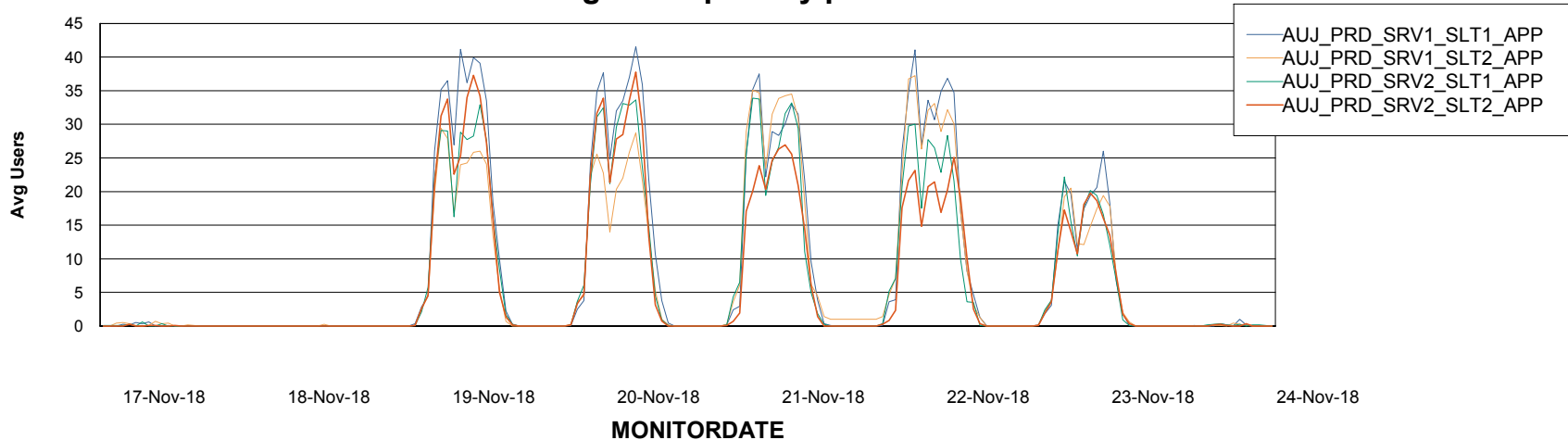


## ABSSolute Application Server Services

### Avg memory used per ABS Server Service



### Avg users per day per ABS server



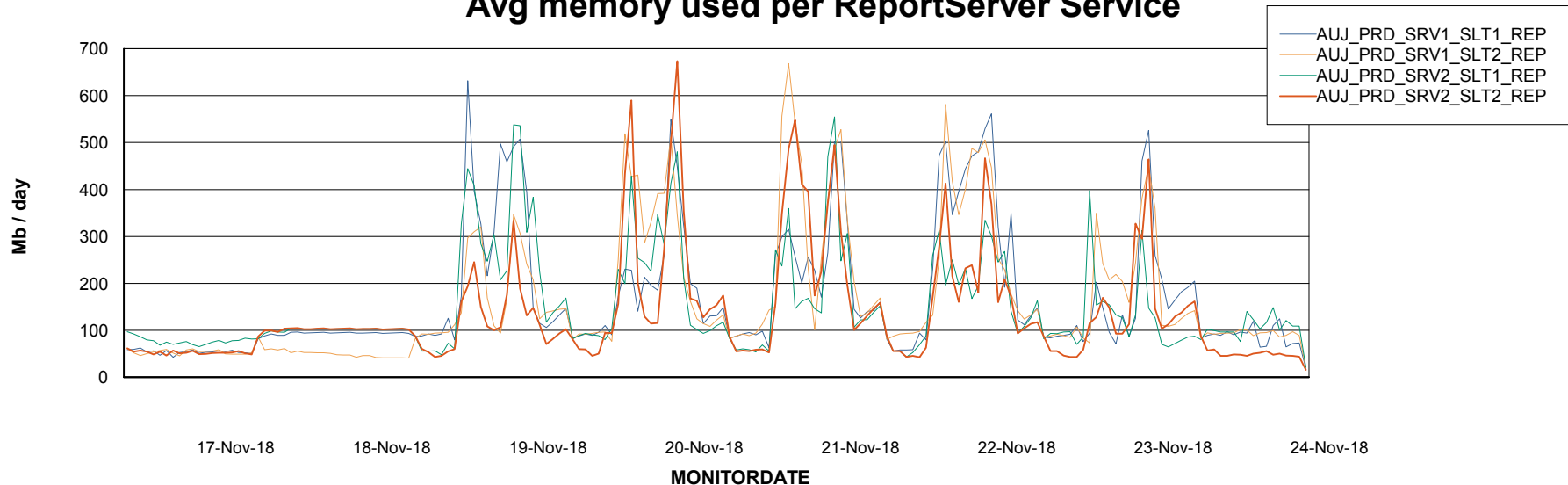
# Weekly SLA Customer Report

Customer AUJ\_Production  
Database ID 41



## ABSolute Application ReportServer Services

### Avg memory used per ReportServer Service



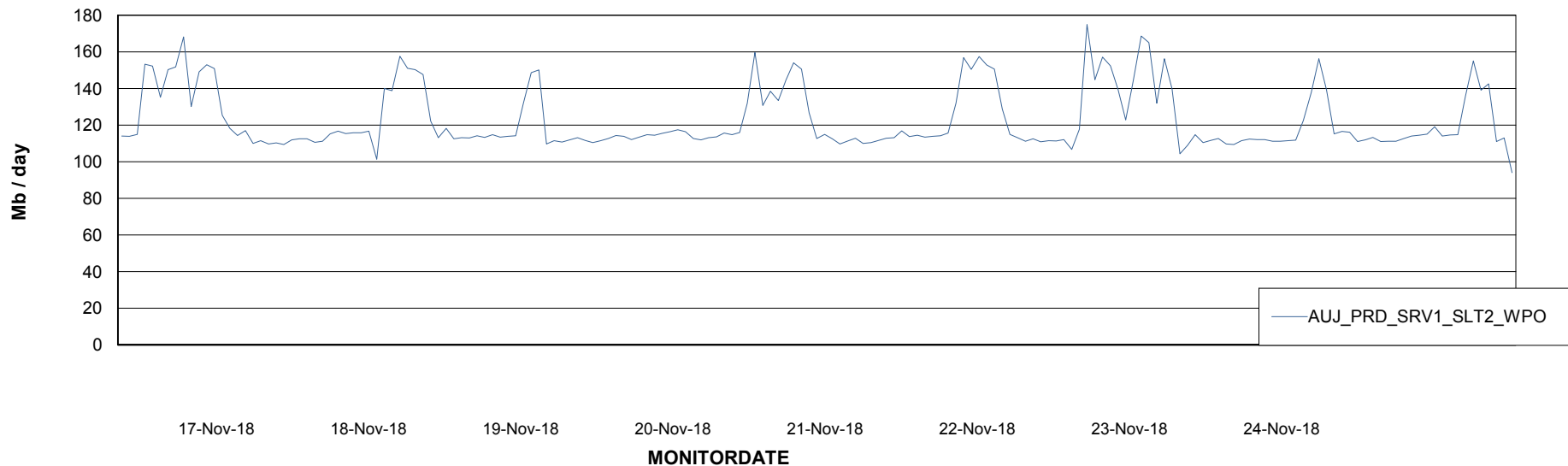
# Weekly SLA Customer Report

Customer AUJ\_Production  
Database ID 41



## ABSSolute Web Component Services

### Avg memory used per ABS Web component



# Weekly SLA Customer Report

Customer AUJ\_Production  
Database ID 41



## Disaster per ABS component

