

Weekly SLA Customer Report

Customer AUJ_Production
Database ID 41



Harddisk Usage AUJ_PRD_ABS_APP1

	Free disk space on / (%)	Total disk space on / (Gb)	Used disk space on / (Gb)
10-Nov-18	10	241	206
09-Nov-18	10	241	206
08-Nov-18	10	241	206
07-Nov-18	10	241	206
06-Nov-18	10	241	207
05-Nov-18	10	241	207
04-Nov-18	10	241	207

Harddisk Usage AUJ_PRD_ABS_APP2

	Free disk space on / (%)	Total disk space on / (Gb)	Used disk space on / (Gb)
10-Nov-18	21	241	180
09-Nov-18	21	241	180
08-Nov-18	22	241	180
07-Nov-18	22	241	180
06-Nov-18	22	241	180
05-Nov-18	22	241	179
04-Nov-18	22	241	179

Weekly SLA Customer Report

Customer AUJ_Production
 Database ID 41



Harddisk Usage AUJ_PRD_ABS_APP3

	Free disk space on / (%)	Total disk space on / (Gb)	Used disk space on / (Gb)
10-Nov-18	91	247	22
09-Nov-18	91	247	22
08-Nov-18	91	247	22
07-Nov-18	91	247	22
06-Nov-18	91	247	22
05-Nov-18	91	247	22
04-Nov-18	91	247	22

Harddisk Usage AUJ_PRD_ORACLE4

	Free disk space on / (%)	Total disk space on / (Gb)	Used disk space on / (Gb)	Free disk space on /bk (%)	Total disk space on /bk (Gb)	Used disk space on /bk (Gb)	Free disk space on /data (%)	Total disk space on /data (Gb)	Used disk space on /da /data
10-Nov-18	98	534	12	63	4,436	1,543	78	4,436	909
09-Nov-18	98	534	12	63	4,436	1,561	78	4,436	909
08-Nov-18	98	534	12	63	4,436	1,560	78	4,436	909
07-Nov-18	98	534	12	63	4,436	1,560	78	4,436	909
06-Nov-18	98	534	12	63	4,436	1,559	78	4,436	909
05-Nov-18	98	534	11	63	4,436	1,556	78	4,436	909
04-Nov-18	98	534	12	63	4,436	1,550	78	4,436	909

Weekly SLA Customer Report

Customer AUJ_Production
 Database ID 41



Harddisk Usage AUJ_PRD_ORACLE5

	Free disk space on / (%)	Total disk space on / (Gb)	Used disk space on / (Gb)	Free disk space on /bk (%)	Total disk space on /bk (Gb)	Used disk space on /bk (Gb)	Free disk space on /data (%)	Total disk space on /data (Gb)	Used disk space on /da /data
10-Nov-18	98	534	12	94	4,436	232	78	4,436	911
09-Nov-18	98	534	12	94	4,436	237	78	4,436	912
08-Nov-18	98	534	12	94	4,436	238	78	4,436	912
07-Nov-18	98	534	12	94	4,436	239	78	4,436	912
06-Nov-18	98	534	12	94	4,436	238	78	4,436	912
05-Nov-18	98	534	12	95	4,436	231	78	4,436	912
04-Nov-18	98	534	12	95	4,436	225	78	4,436	911

Harddisk Usage AUJ_PRD_ORACLE6

	Free disk space on / (%)	Total disk space on / (Gb)	Used disk space on / (Gb)	Free disk space on /bk (%)	Total disk space on /bk (Gb)	Used disk space on /bk (Gb)	Free disk space on /data (%)	Total disk space on /data (Gb)	Used disk space on /da /data
10-Nov-18	87	534	67	87	534	67	79	4,436	903
09-Nov-18	86	534	72	86	534	72	79	4,436	904
08-Nov-18	86	534	73	86	534	73	79	4,436	904
07-Nov-18	85	534	74	85	534	74	79	4,436	904
06-Nov-18	86	534	72	86	534	72	79	4,436	904
05-Nov-18	88	534	63	88	534	63	79	4,436	904
04-Nov-18	88	534	58	88	534	58	79	4,436	903

Weekly SLA Customer Report

Customer AUJ_Production
Database ID 41



Harddisk Usage AUJ_PRD_ORACLE_BI1

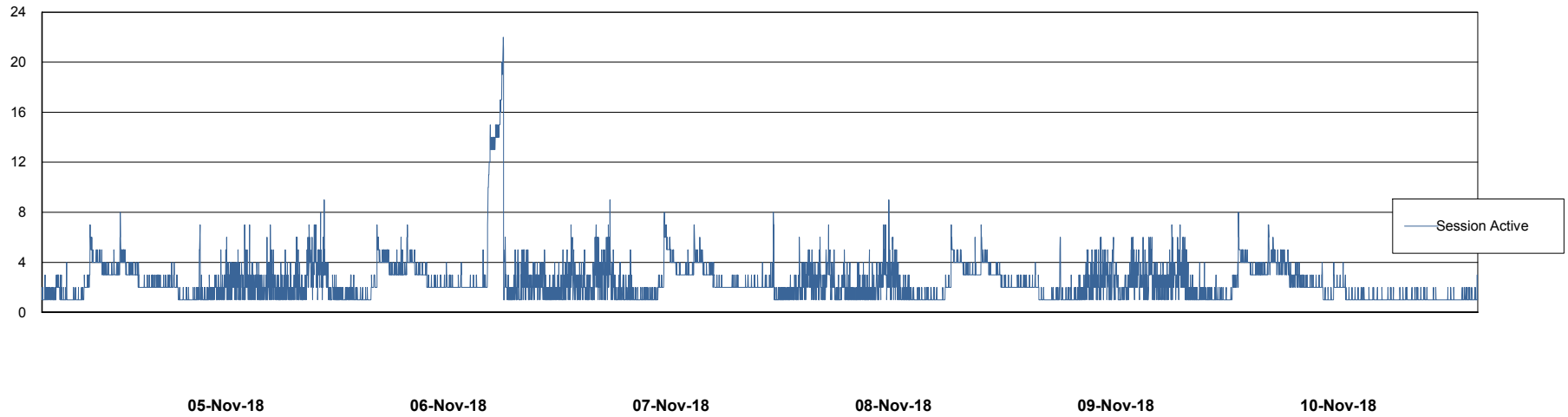
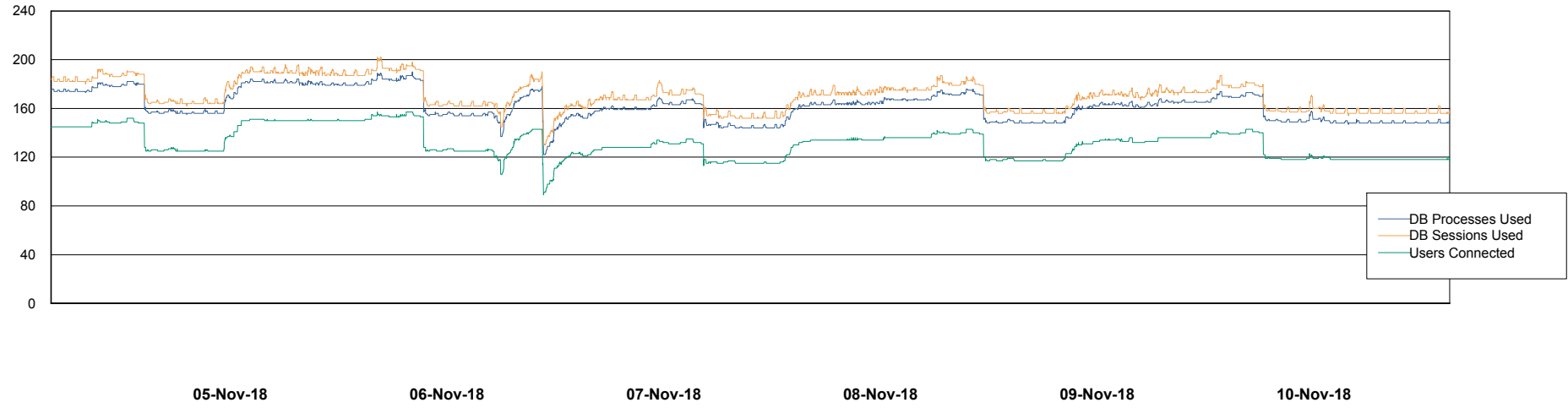
	Free disk space on / (%)	Total disk space on / (Gb)	Used disk space on / (Gb)
10-Nov-18	8	526	459
09-Nov-18	9	526	455
08-Nov-18	9	526	455
07-Nov-18	9	526	455
06-Nov-18	9	526	454
05-Nov-18	9	526	453
04-Nov-18	8	526	457

Weekly SLA Customer Report

Customer AUJ_Production
Database ID 41



Database Performance AUJ_DB4_Primary

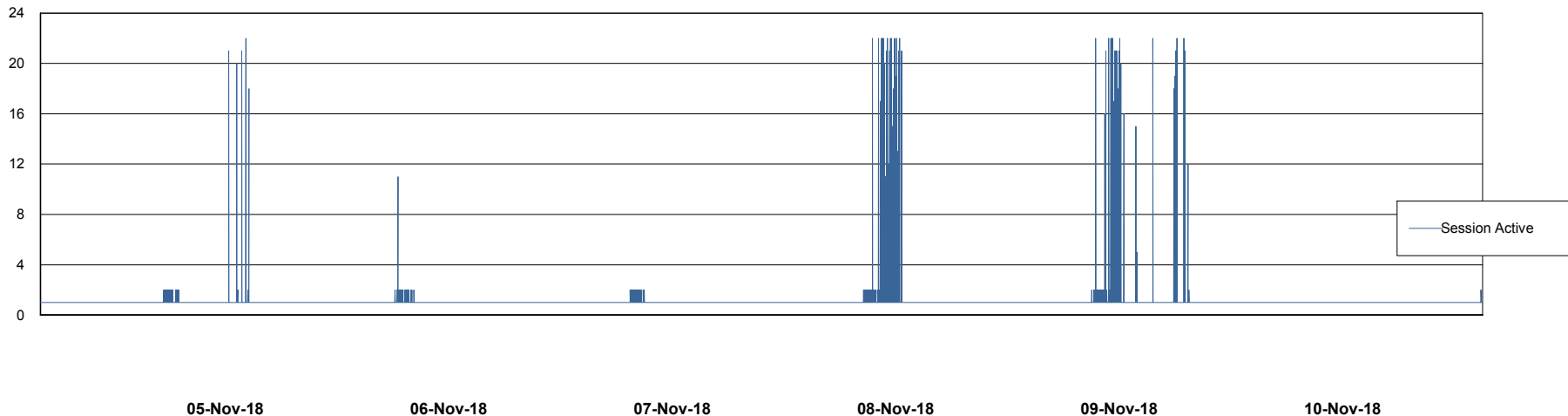
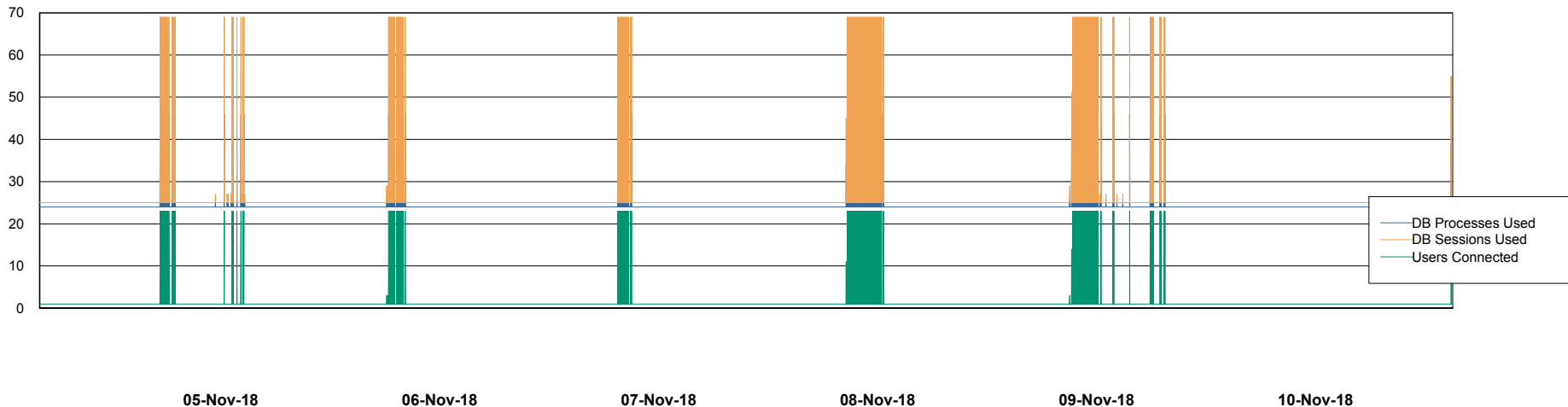


Weekly SLA Customer Report

Customer AUJ_Production
Database ID 41



Database Performance AUJ_DB5_Standby

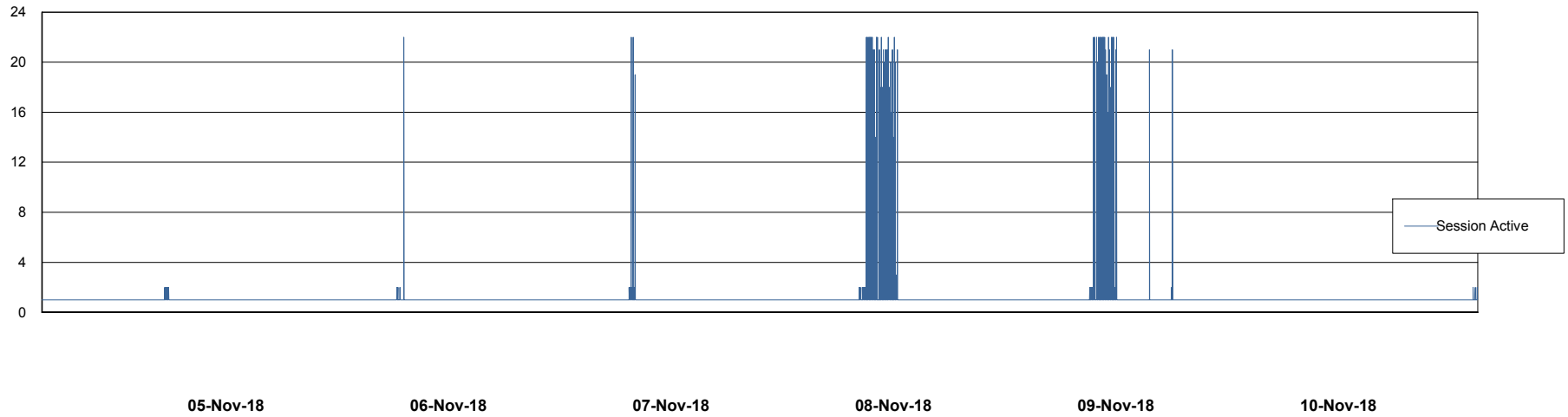
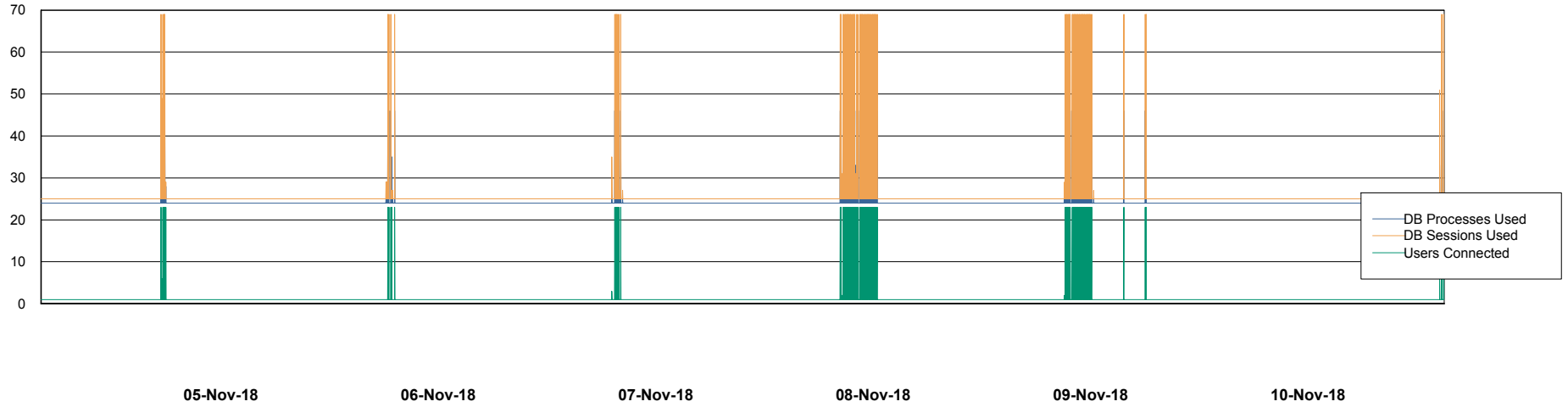


Weekly SLA Customer Report

Customer AUJ_Production
Database ID 41



Database Performance AUJ_DB6_Standby2

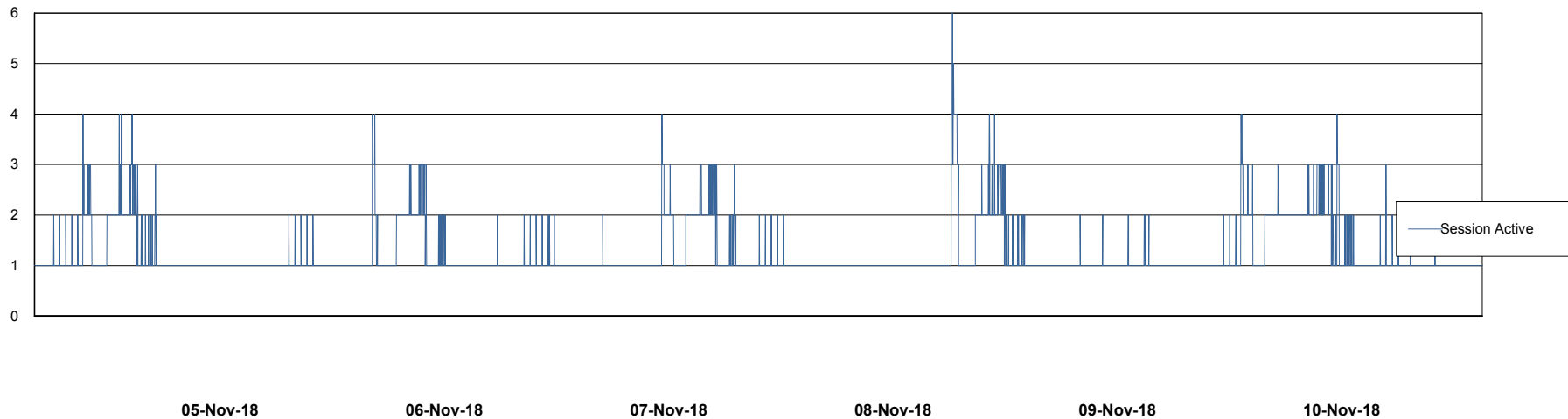
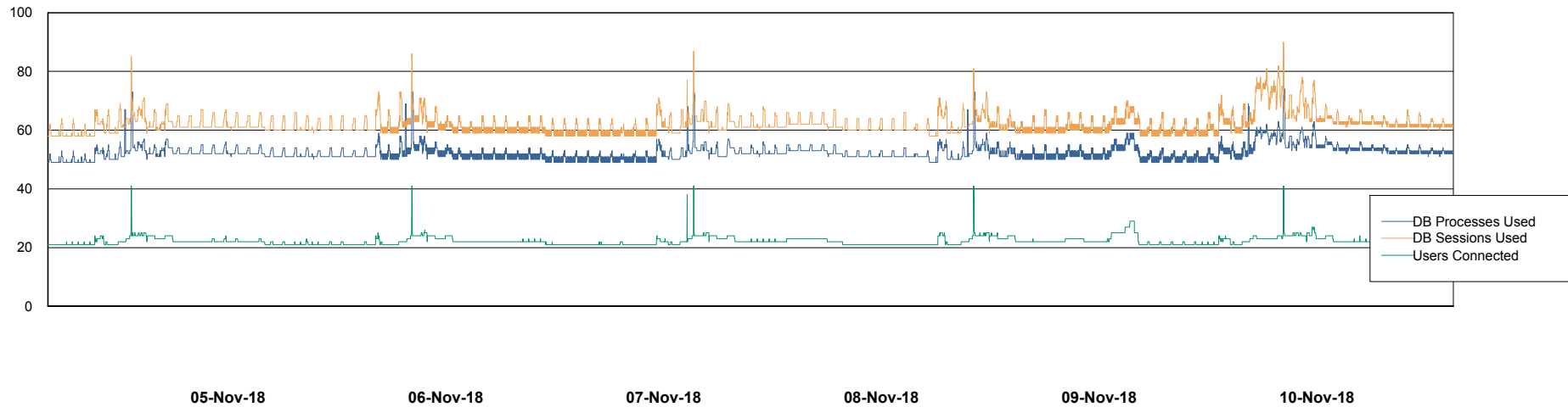


Weekly SLA Customer Report

Customer AUJ_Production
Database ID 41



Database Performance AUJDB_BI

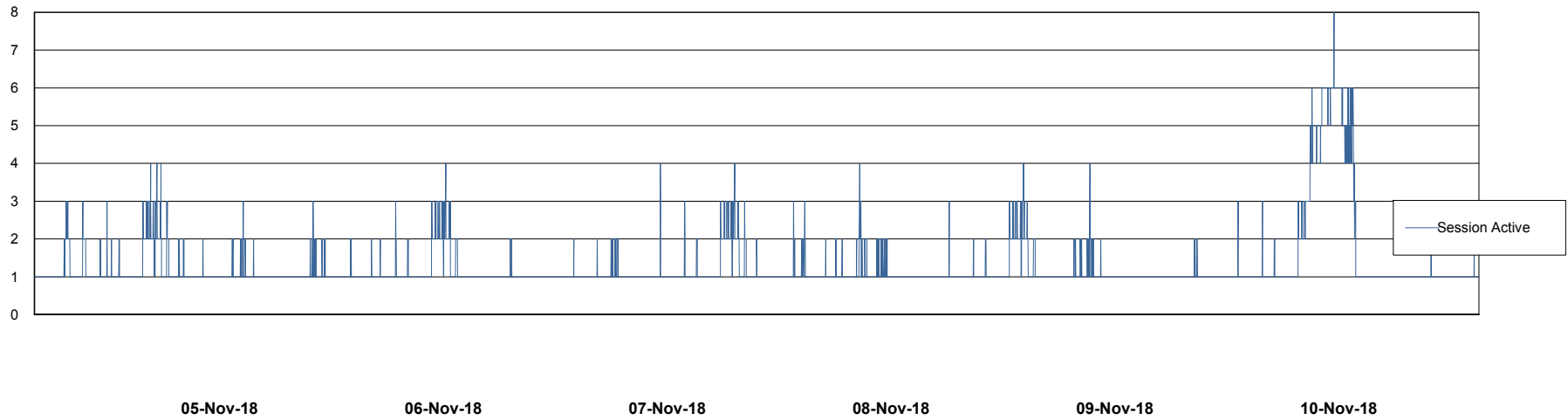
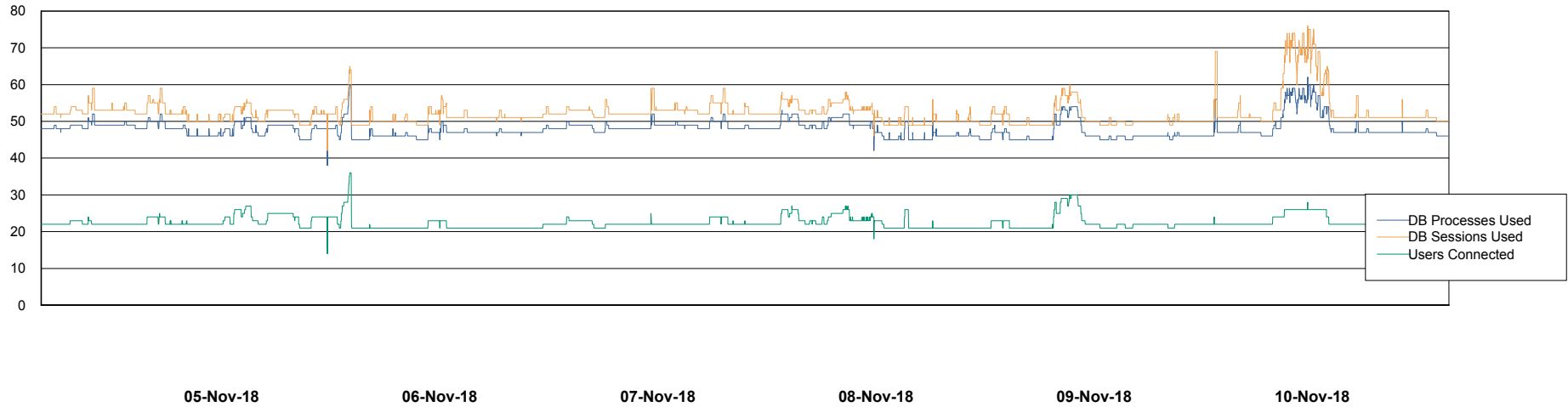


Weekly SLA Customer Report

Customer AUJ_Production
Database ID 41



Database Performance AUJDB_BI_TS1



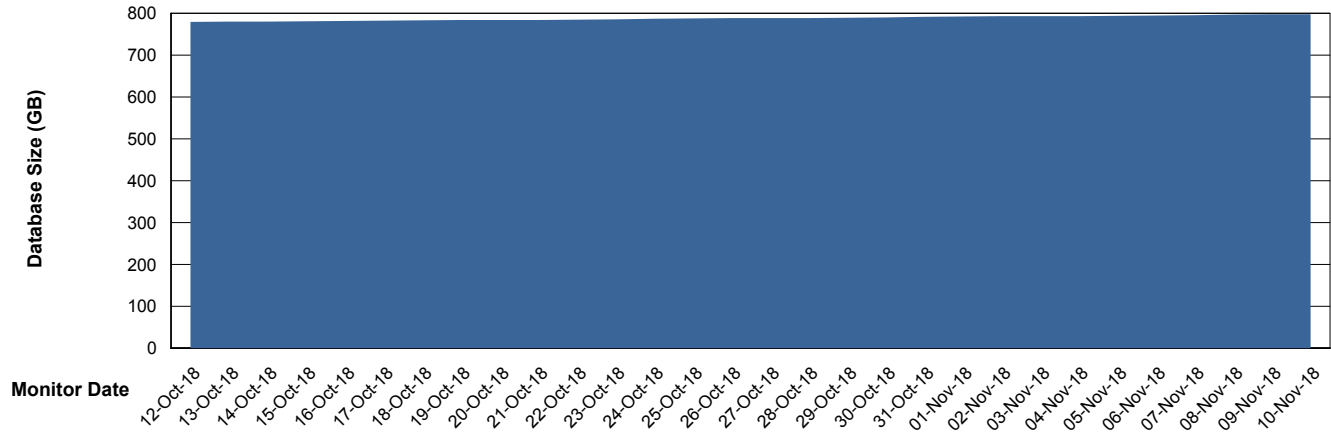
Weekly SLA Customer Report

Customer AUJ_Production
Database ID 41



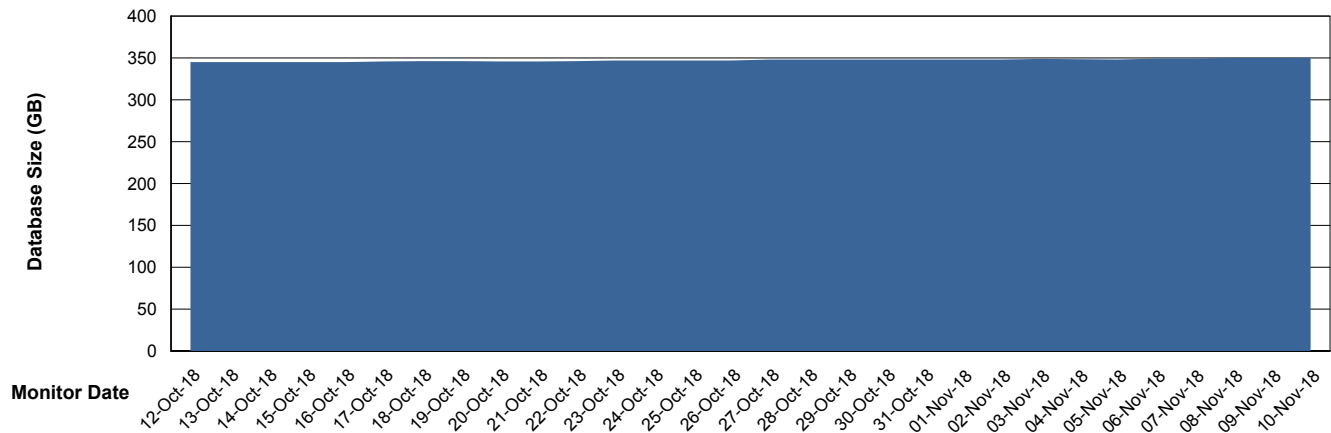
DATABASE SIZE AUJ_DB4_Primary

Database growth over last month



DATABASE SIZE AUJDB_BI

Database growth over last month



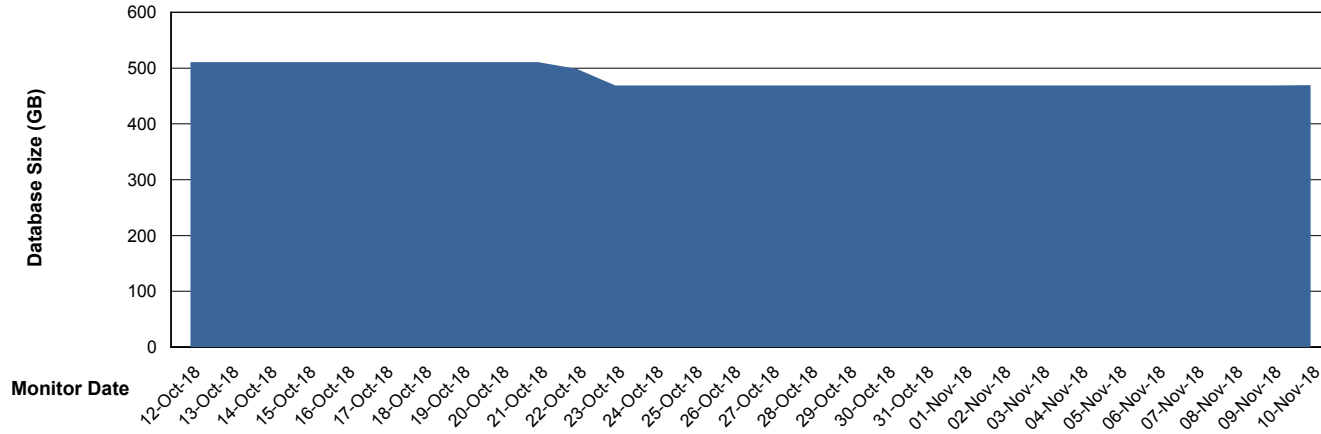
Weekly SLA Customer Report

Customer AUJ_Production
Database ID 41



DATABASE SIZE AUJDB_BI_TS1

Database growth over last month



Weekly SLA Customer Report

Customer AUJ_Production
 Database ID 41



Database Tablespace AUJ_DB4_Primary

Date	Tablespace Name	Filesize (Gb)	Usedsize (Gb)	Percentage free
10-Nov-18	ABSDATA	404	366	9
	INDX	444	430	3
09-Nov-18	ABSDATA	404	366	9
	INDX	444	430	3
08-Nov-18	ABSDATA	404	366	9
	INDX	444	430	3
07-Nov-18	ABSDATA	404	366	9
	INDX	444	429	3
06-Nov-18	ABSDATA	404	365	10
	INDX	444	428	4
05-Nov-18	ABSDATA	404	365	10
	INDX	444	428	4
04-Nov-18	ABSDATA	404	365	10
	INDX	444	427	4

Weekly SLA Customer Report

Customer AUJ_Production
 Database ID 41



Database Tablespace AUJDB_BI

Date	Tablespace Name	Filesize (Gb)	Usedsize (Gb)	Percentage free
10-Nov-18	ABSDATA	113	108	4
	INDX	242	237	2
09-Nov-18	ABSDATA	113	108	4
	INDX	242	237	2
08-Nov-18	ABSDATA	113	108	4
	INDX	242	237	2
07-Nov-18	ABSDATA	113	108	4
	INDX	242	237	2
06-Nov-18	ABSDATA	113	108	4
	INDX	242	237	2
05-Nov-18	ABSDATA	113	108	4
	INDX	242	236	2
04-Nov-18	ABSDATA	113	108	4
	INDX	242	236	2

Weekly SLA Customer Report

Customer AUJ_Production
 Database ID 41



Database Tablespace AUJDB_BI_TS1

Date	Tablespace Name	Filesize (Gb)	Usedsize (Gb)	Percentage free
10-Nov-18	ABSDATA	282	189	33
	INDX	410	276	33
09-Nov-18	ABSDATA	282	189	33
	INDX	410	276	33
08-Nov-18	ABSDATA	282	189	33
	INDX	410	276	33
07-Nov-18	ABSDATA	282	189	33
	INDX	410	276	33
06-Nov-18	ABSDATA	282	189	33
	INDX	410	276	33
05-Nov-18	ABSDATA	282	189	33
	INDX	410	276	33
04-Nov-18	ABSDATA	282	189	33
	INDX	410	276	33

BI Status and last ETL error for AUJDB_BI

	Sun 4/11/2018	Mon 5/11/2018	Tue 6/11/2018	Wed 7/11/2018	Thu 8/11/2018	Fri 9/11/2018	Sat 10/11/2018
ABS DataWarehouse ETL Health	OK	OK	OK	OK	OK	OK	OK
ABS DWHStaging ETL Health	OK	OK	OK	OK	OK	OK	OK

BI Status and last ETL error for AUJDB_BI_TS1

	Sun 4/11/2018	Mon 5/11/2018	Tue 6/11/2018	Wed 7/11/2018	Thu 8/11/2018	Fri 9/11/2018	Sat 10/11/2018
ABS DataWarehouse ETL Health	OK	OK	OK	OK	OK	OK	Not OK
ABS DWHStaging ETL Health	OK	OK	OK	OK	OK	OK	OK

BI last ETL error for AUJDB_BI_TS1

Sat, 10-11-2018 ORA-01722: invalid number

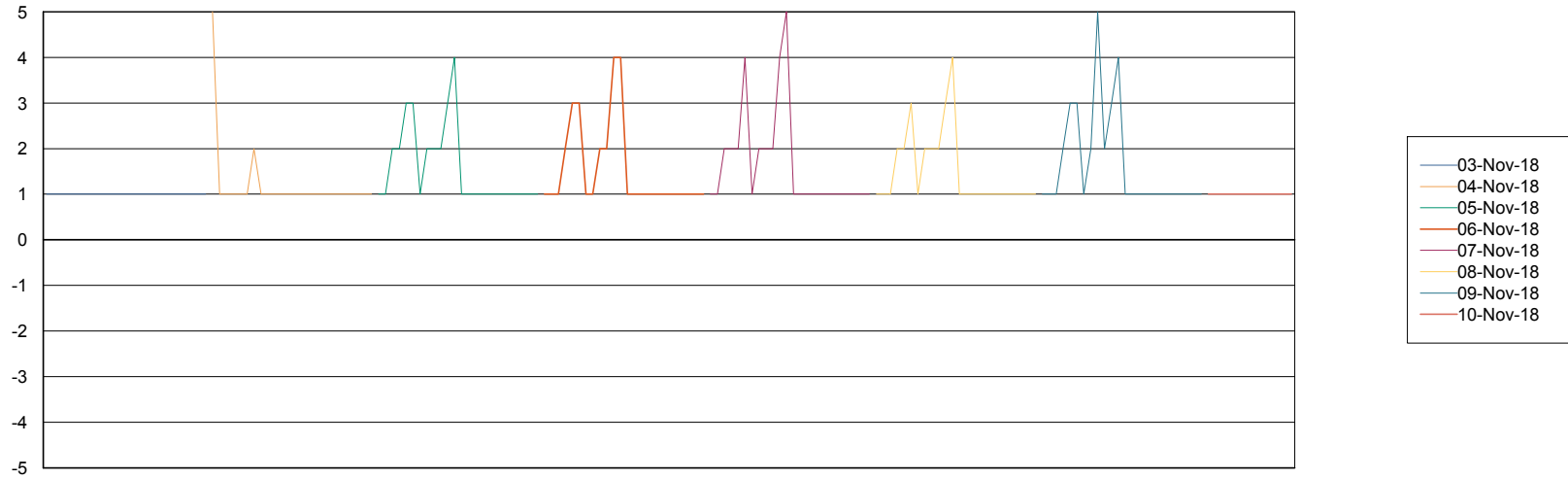
Weekly SLA Customer Report

Customer AUJ_Production
Database ID 41



Standby Database Health AUJ_Production

Recovery lag for last 7 days



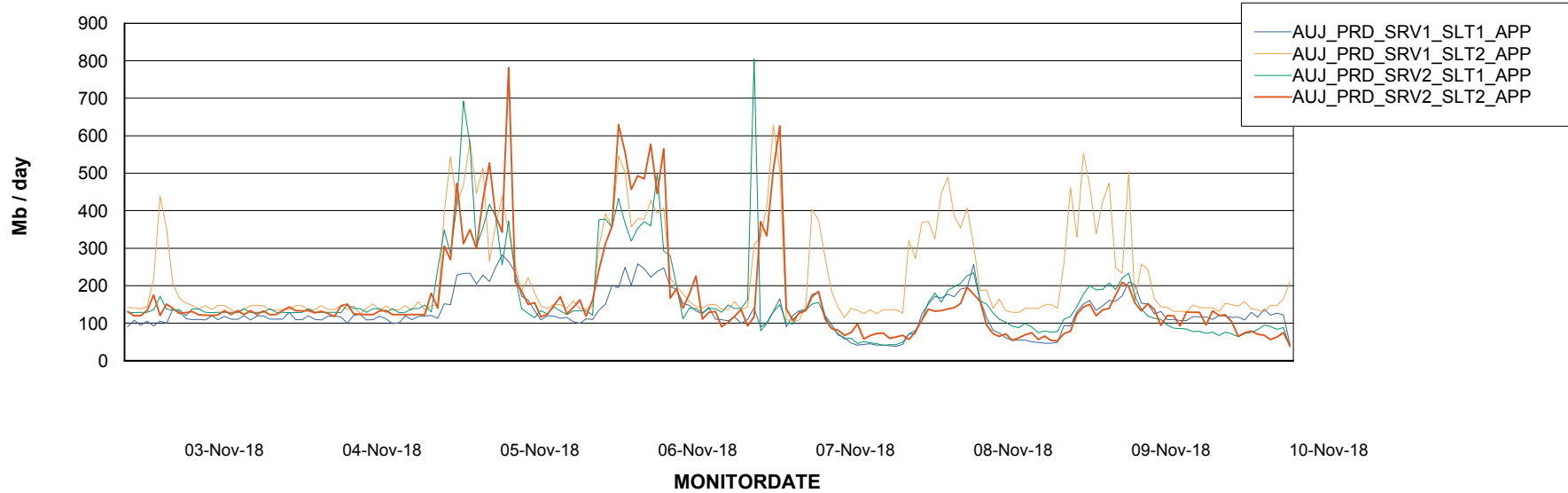
Weekly SLA Customer Report

Customer AUJ_Production
Database ID 41

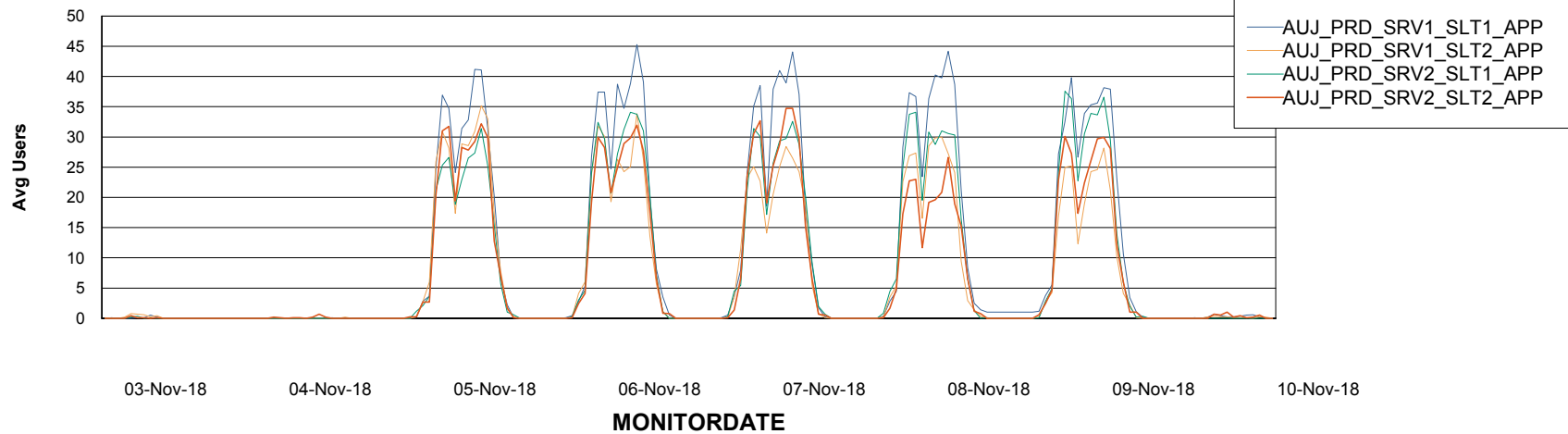


ABSSolute Application Server Services

Avg memory used per ABS Server Service



Avg users per day per ABS server



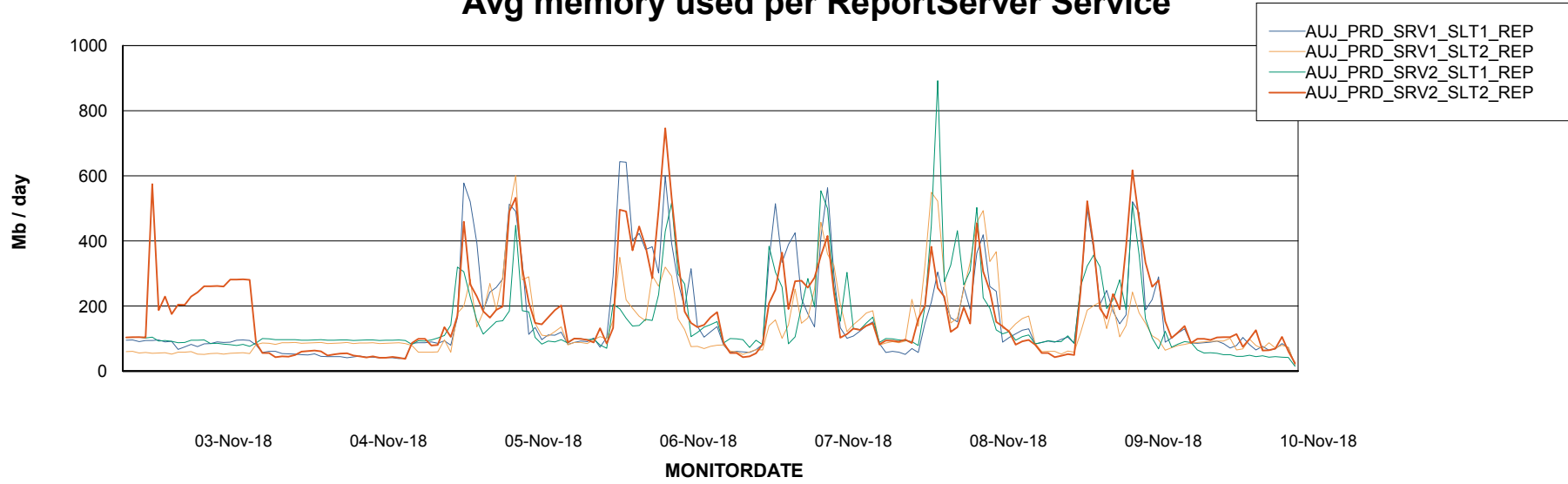
Weekly SLA Customer Report

Customer AUJ_Production
Database ID 41



ABSSolute Application ReportServer Services

Avg memory used per ReportServer Service



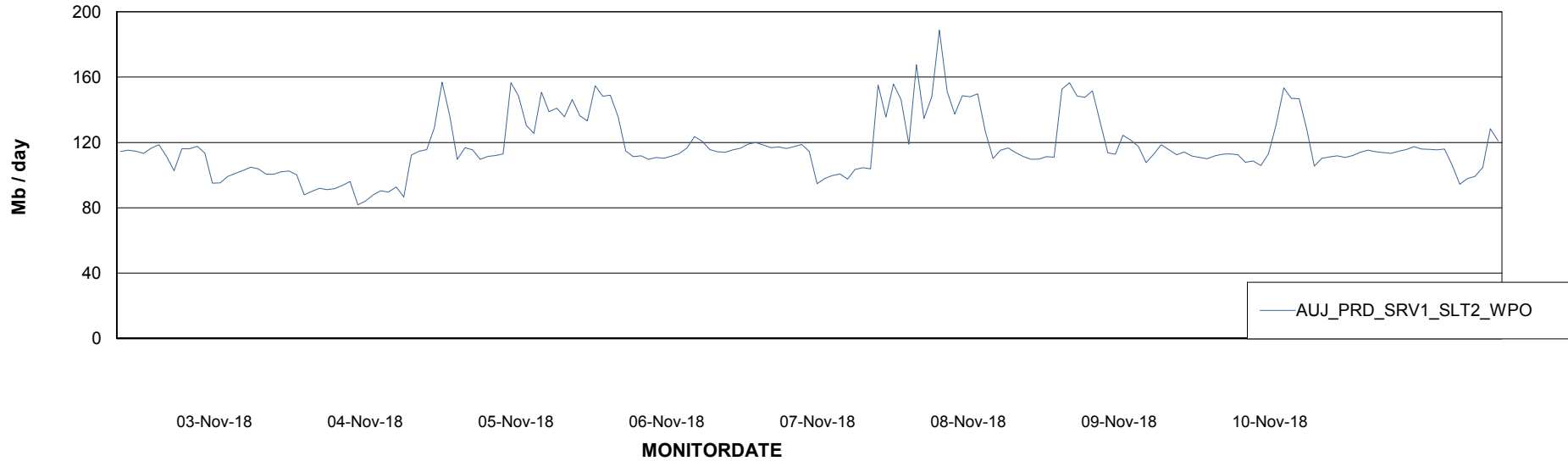
Weekly SLA Customer Report

Customer AUJ_Production
Database ID 41



ABSSolute Web Component Services

Avg memory used per ABS Web component



Weekly SLA Customer Report

Customer AUJ_Production
Database ID 41



Disaster per ABS component

