

# Weekly SLA Customer Report

Customer AUJ\_Production  
Database ID 41



## Harddisk Usage AUJ\_PRD\_ABS\_APP1

	Free disk space on / (%)	Total disk space on / (Gb)	Used disk space on / (Gb)
27-Oct-18	10	241	206
26-Oct-18	10	241	206
25-Oct-18	10	241	206
24-Oct-18	10	241	206
23-Oct-18	10	241	206
22-Oct-18	10	241	206
21-Oct-18	10	241	206

## Harddisk Usage AUJ\_PRD\_ABS\_APP2

	Free disk space on / (%)	Total disk space on / (Gb)	Used disk space on / (Gb)
27-Oct-18	22	241	179
26-Oct-18	22	241	179
25-Oct-18	22	241	179
24-Oct-18	22	241	179
23-Oct-18	22	241	179
22-Oct-18	22	241	179
21-Oct-18	22	241	179

# Weekly SLA Customer Report

Customer AUJ\_Production  
Database ID 41



## Harddisk Usage AUJ\_PRD\_ABS\_APP3

	Free disk space on / (%)	Total disk space on / (Gb)	Used disk space on / (Gb)
27-Oct-18	91	247	22
26-Oct-18	91	247	22
25-Oct-18	91	247	22
24-Oct-18	91	247	22
23-Oct-18	91	247	22
22-Oct-18	91	247	22
21-Oct-18	91	247	22

## Harddisk Usage AUJ\_PRD\_ORACLE4

	Free disk space on / (%)	Total disk space on / (Gb)	Used disk space on / (Gb)	Free disk space on /bk (%)	Total disk space on /bk (Gb)	Used disk space on /bk (Gb)	Free disk space on /data (%)	Total disk space on /data (Gb)	Used disk space on /da /data
27-Oct-18	98	534	11	64	4,436	1,528	78	4,436	909
26-Oct-18	98	534	11	63	4,436	1,546	78	4,436	909
25-Oct-18	98	534	11	63	4,436	1,544	78	4,436	909
24-Oct-18	98	534	11	63	4,436	1,544	78	4,436	909
23-Oct-18	98	534	11	63	4,436	1,543	78	4,436	909
22-Oct-18	98	534	11	63	4,436	1,541	78	4,436	909
21-Oct-18	98	534	11	64	4,436	1,533	78	4,436	909

# Weekly SLA Customer Report

Customer AUJ\_Production  
Database ID 41



## Harddisk Usage AUJ\_PRD\_ORACLE5

	Free disk space on / (%)	Total disk space on / (Gb)	Used disk space on / (Gb)	Free disk space on /bk (%)	Total disk space on /bk (Gb)	Used disk space on /bk (Gb)	Free disk space on /data (%)	Total disk space on /data (Gb)	Used disk space on /da /data
27-Oct-18	98	534	12	94	4,436	233	78	4,436	911
26-Oct-18	98	534	12	94	4,436	236	78	4,436	912
25-Oct-18	98	534	12	94	4,436	236	78	4,436	912
24-Oct-18	98	534	12	94	4,436	237	78	4,436	912
23-Oct-18	98	534	12	94	4,436	237	78	4,436	912
22-Oct-18	98	534	12	95	4,436	229	78	4,436	911
21-Oct-18	98	534	12	95	4,436	223	78	4,436	911

## Harddisk Usage AUJ\_PRD\_ORACLE6

	Free disk space on / (%)	Total disk space on / (Gb)	Used disk space on / (Gb)	Free disk space on /bk (%)	Total disk space on /bk (Gb)	Used disk space on /bk (Gb)	Free disk space on /data (%)	Total disk space on /data (Gb)	Used disk space on /da /data
27-Oct-18	87	534	67	87	534	67	79	4,436	903
26-Oct-18	86	534	71	86	534	71	79	4,436	904
25-Oct-18	86	534	71	86	534	71	79	4,436	904
24-Oct-18	86	534	72	86	534	72	79	4,436	904
23-Oct-18	86	534	70	86	534	70	79	4,436	904
22-Oct-18	88	534	61	88	534	61	79	4,436	903
21-Oct-18	89	534	56	89	534	56	79	4,436	903

# Weekly SLA Customer Report

Customer AUJ\_Production  
Database ID 41



Harddisk Usage AUJ\_PRD\_ORACLE\_BI1

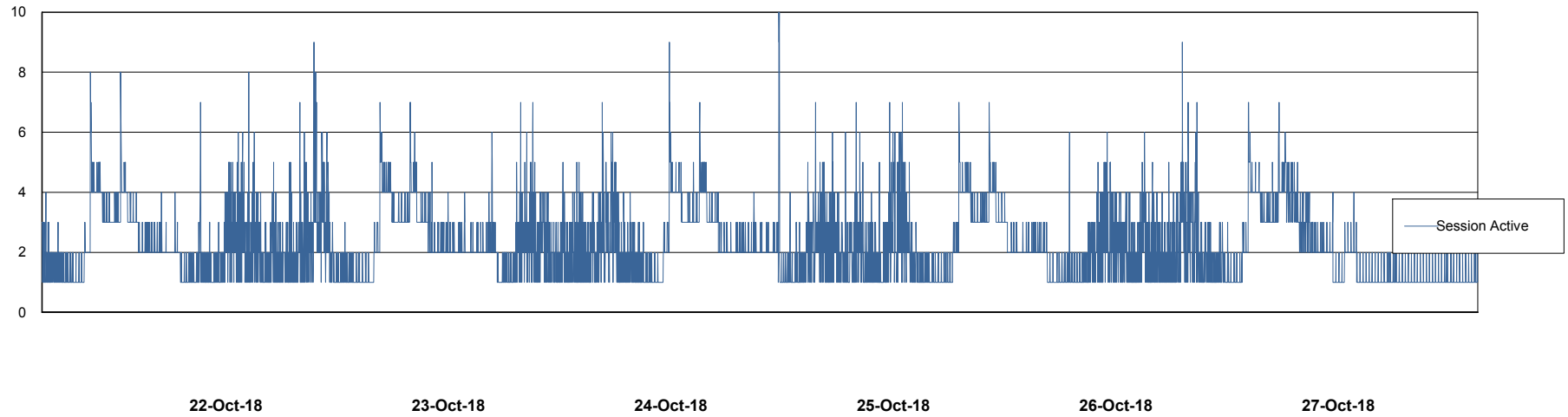
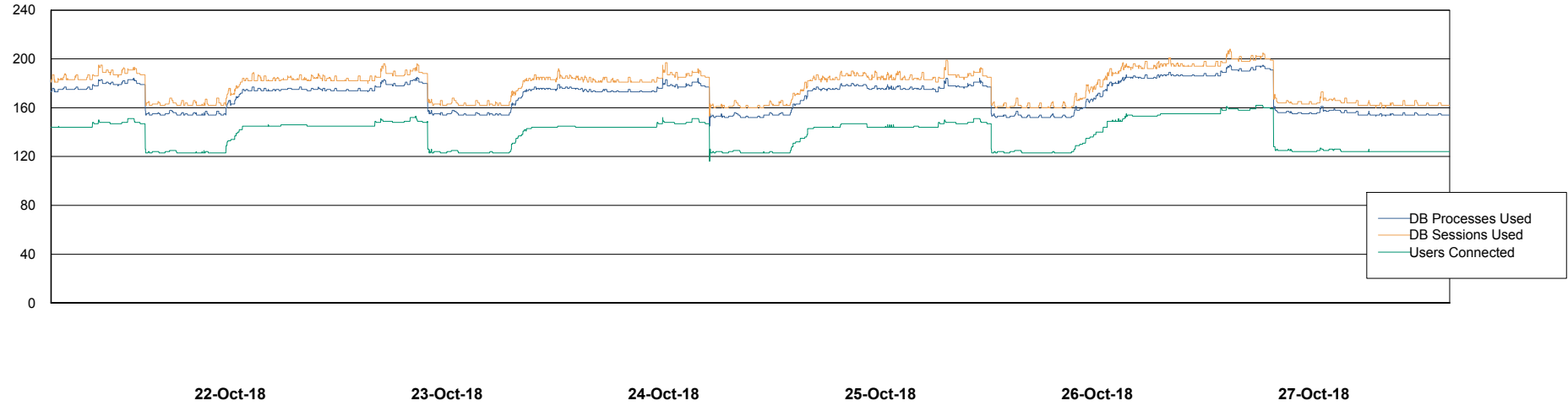
	Free disk space on / (%)	Total disk space on / (Gb)	Used disk space on / (Gb)
27-Oct-18	8	526	459
26-Oct-18	9	526	455
25-Oct-18	9	526	454
24-Oct-18	9	526	455
23-Oct-18	9	526	454
22-Oct-18	9	526	453
21-Oct-18	8	526	457

# Weekly SLA Customer Report

Customer AUJ\_Production  
Database ID 41



## Database Performance AUJ\_DB4\_Primary

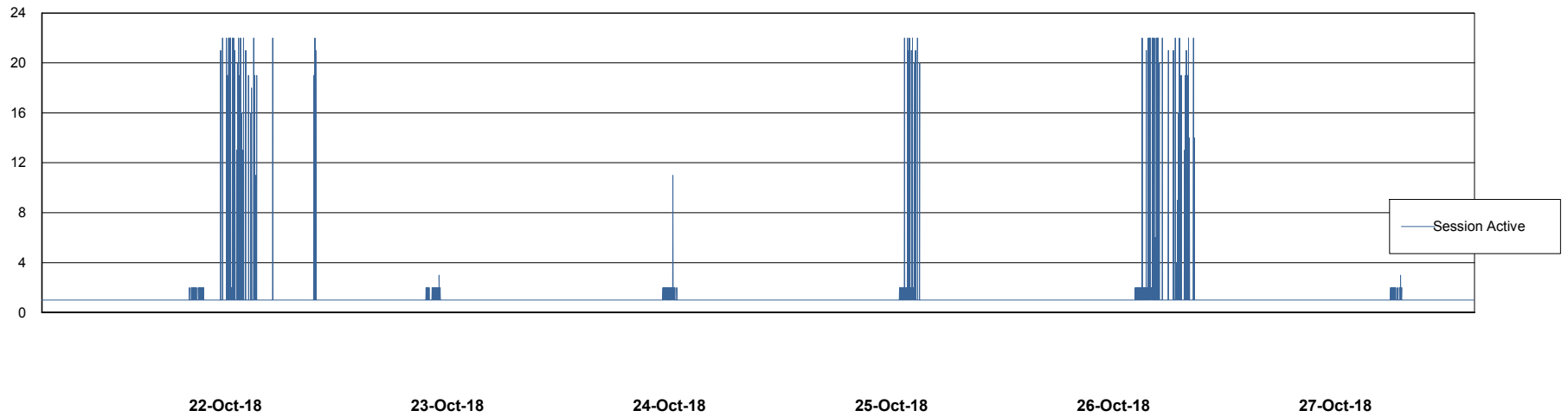
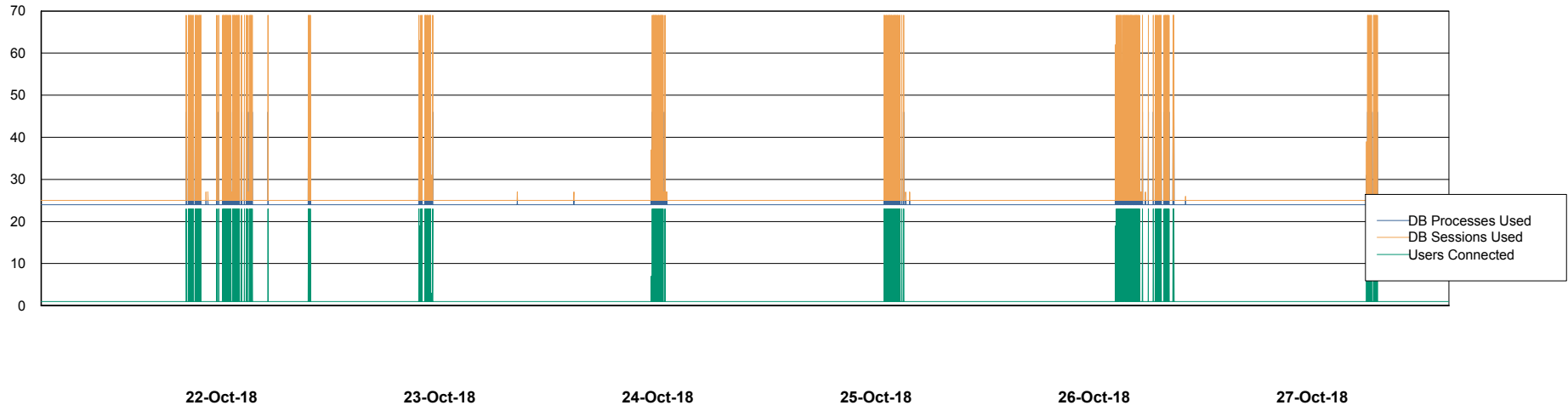


# Weekly SLA Customer Report

Customer AUJ\_Production  
Database ID 41



## Database Performance AUJ\_DB5\_Standby

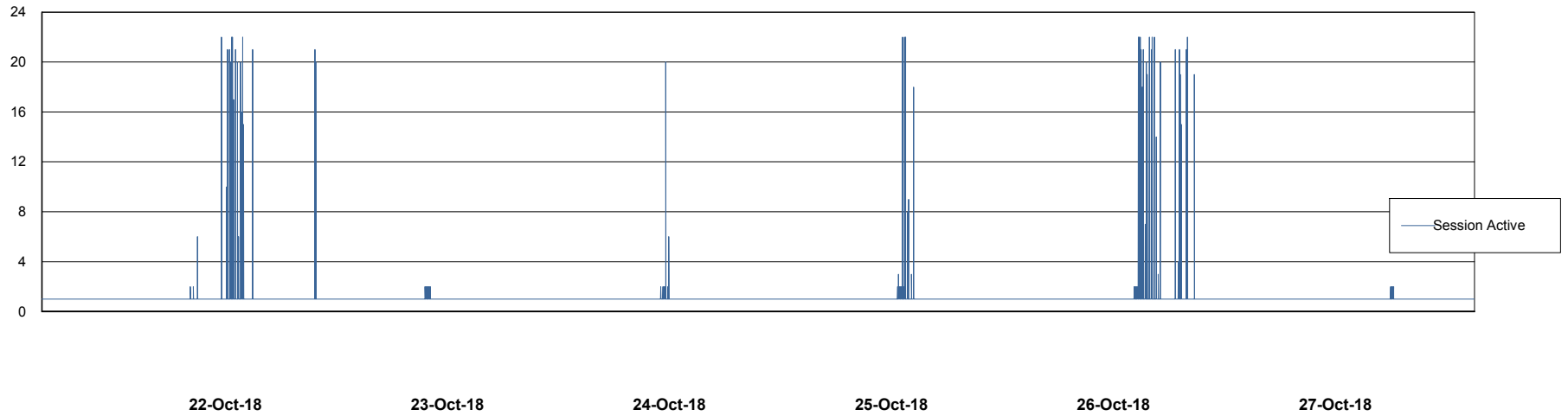
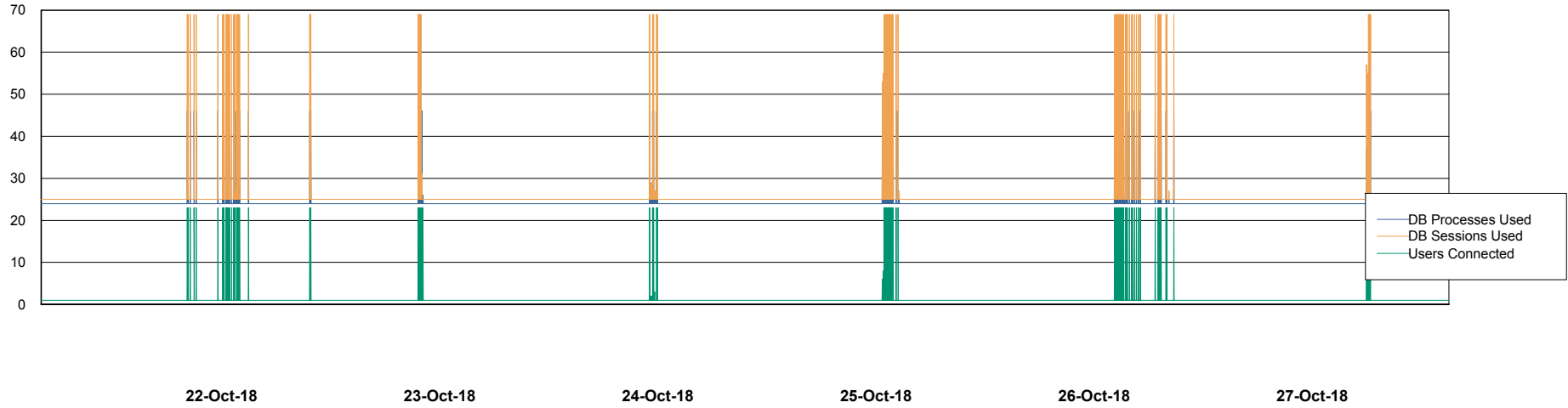


# Weekly SLA Customer Report

Customer AUJ\_Production  
Database ID 41



## Database Performance AUJ\_DB6\_Standby2

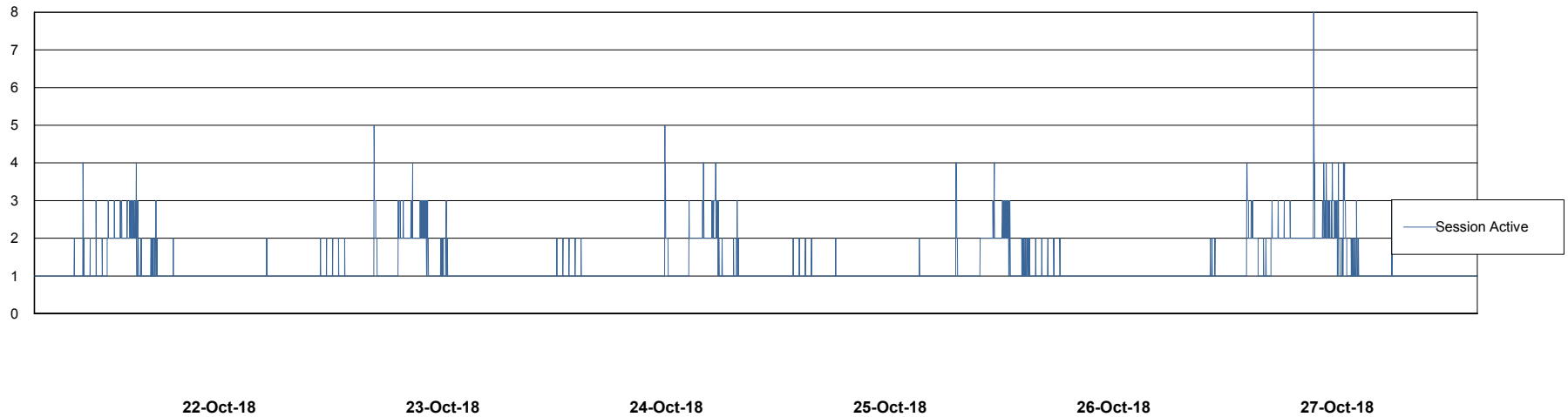
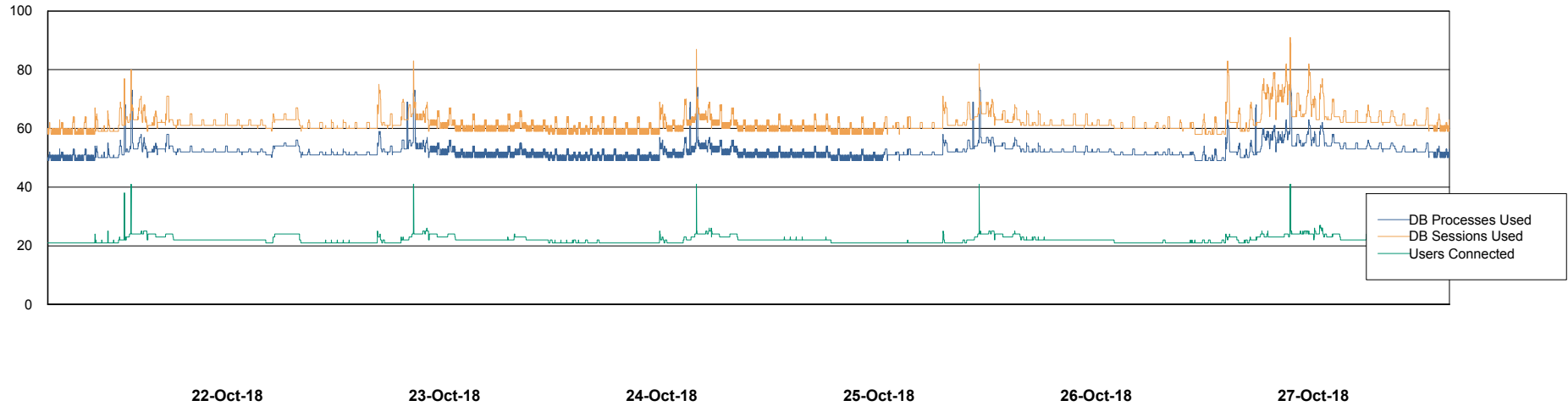


# Weekly SLA Customer Report

Customer AUJ\_Production  
Database ID 41



## Database Performance AUJDB\_BI

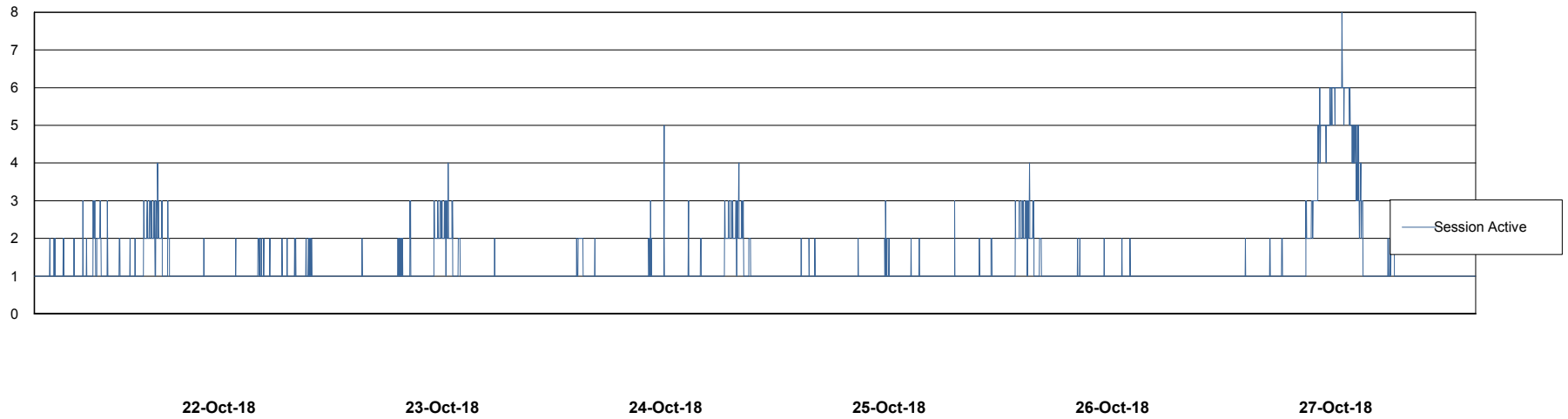
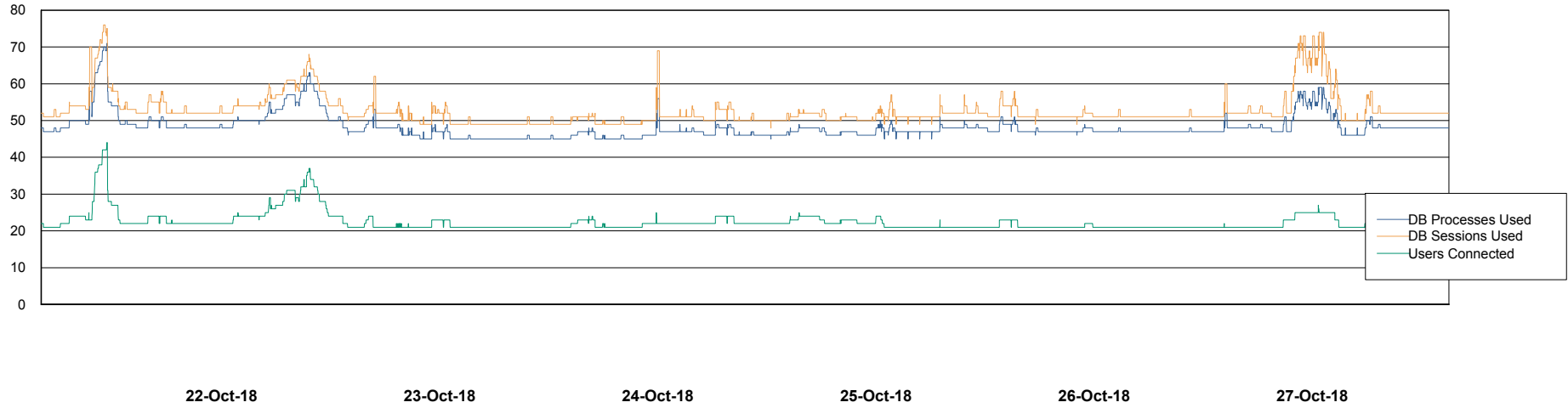


# Weekly SLA Customer Report

Customer AUJ\_Production  
Database ID 41



## Database Performance AUJDB\_BI\_TS1



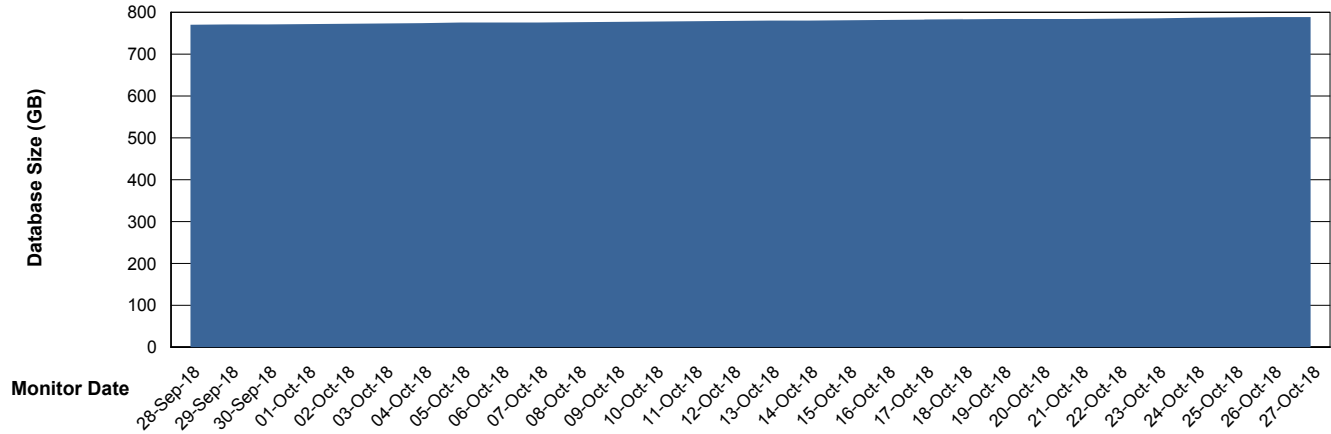
# Weekly SLA Customer Report

Customer AUJ\_Production  
Database ID 41



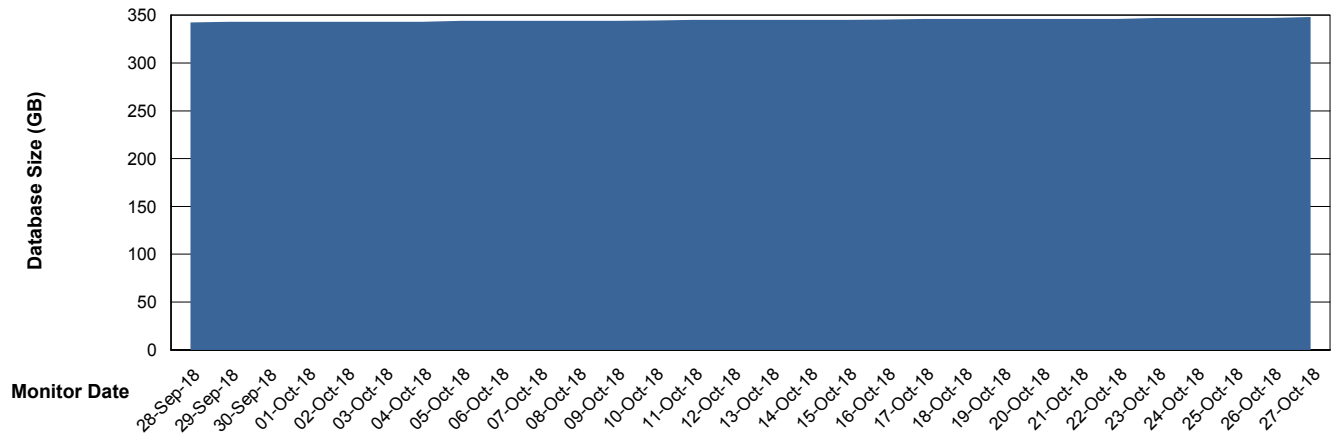
DATABASE SIZE AUJ\_DB4\_Primary

### Database growth over last month



DATABASE SIZE AUJDB\_BI

### Database growth over last month



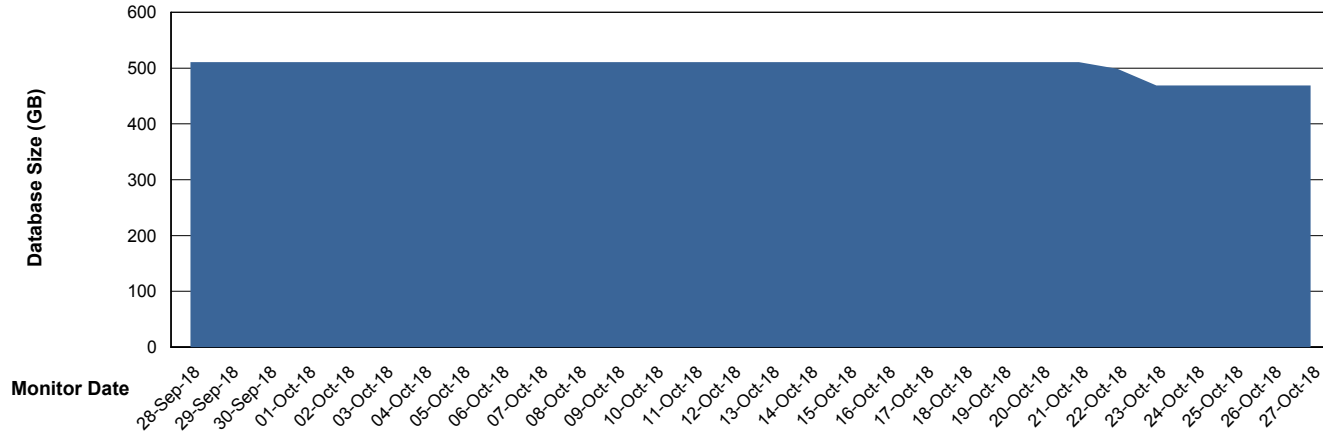
# Weekly SLA Customer Report

Customer AUJ\_Production  
Database ID 41



DATABASE SIZE AUJDB\_BI\_TS1

### Database growth over last month



# Weekly SLA Customer Report

Customer AUJ\_Production  
Database ID 41



## Database Tablespace AUJ\_DB4\_Primary

Date	Tablespace Name	Filesize (Gb)	Usedsize (Gb)	Percentage free
27-Oct-18	ABSDATA	404	363	10
	INDX	444	424	5
26-Oct-18	ABSDATA	404	363	10
	INDX	444	424	5
25-Oct-18	ABSDATA	404	362	10
	INDX	444	424	5
24-Oct-18	ABSDATA	404	362	10
	INDX	444	424	5
23-Oct-18	ABSDATA	404	362	10
	INDX	444	423	5
22-Oct-18	ABSDATA	404	361	11
	INDX	444	422	5
21-Oct-18	ABSDATA	404	361	11
	INDX	444	422	5

# Weekly SLA Customer Report

Customer AUJ\_Production  
 Database ID 41



Database Tablespace AUJDB\_BI

Date	Tablespace Name	Filesize (Gb)	Usedsize (Gb)	Percentage free
27-Oct-18	ABSDATA	113	107	5
	INDX	242	236	2
26-Oct-18	ABSDATA	113	107	5
	INDX	242	236	2
25-Oct-18	ABSDATA	113	107	5
	INDX	242	235	3
24-Oct-18	ABSDATA	113	107	5
	INDX	242	235	3
23-Oct-18	ABSDATA	113	107	5
	INDX	242	235	3
22-Oct-18	ABSDATA	113	107	5
	INDX	242	235	3
21-Oct-18	ABSDATA	113	107	5
	INDX	242	235	3

# Weekly SLA Customer Report

Customer AUJ\_Production  
 Database ID 41



Database Tablespace AUJDB\_BI\_TS1

Date	Tablespace Name	Filesize (Gb)	Usedsize (Gb)	Percentage free
27-Oct-18	ABSDATA	282	189	33
	INDX	410	276	33
26-Oct-18	ABSDATA	282	189	33
	INDX	410	276	33
25-Oct-18	ABSDATA	282	189	33
	INDX	410	276	33
24-Oct-18	ABSDATA	282	189	33
	INDX	410	276	33
23-Oct-18	ABSDATA	282	189	33
	INDX	410	276	33
22-Oct-18	ABSDATA	282	220	22
	INDX	410	287	30
21-Oct-18	ABSDATA	282	220	22
	INDX	410	287	30

BI Status and last ETL error for AUJDB\_BI

	Sun 21/10/2018	Mon 22/10/2018	Tue 23/10/2018	Wed 24/10/2018	Thu 25/10/2018	Fri 26/10/2018	Sat 27/10/2018
<b>ABS DataWarehouse ETL Health</b>	OK	Not OK	OK	OK	OK	OK	OK
<b>ABS DWHStaging ETL Health</b>	OK	OK	OK	OK	OK	OK	OK

BI Status and last ETL error for AUJDB\_BI\_TS1

	Sun 21/10/2018	Mon 22/10/2018	Tue 23/10/2018	Wed 24/10/2018	Thu 25/10/2018	Fri 26/10/2018	Sat 27/10/2018
<b>ABS DataWarehouse ETL Health</b>	OK	OK	OK	OK	OK	OK	Not OK
<b>ABS DWHStaging ETL Health</b>	OK	Not OK	OK	OK	OK	OK	OK

BI last ETL error for AUJDB\_BI\_TS1

Mon, 22-10-2018 ORA-02291: integrity constraint (ABSDWHSTAGING2.FK\_TOG\_SALESJOURNAL\_GROUP) violated - parent key not found  
 Sat, 27-10-2018 ORA-01722: invalid number

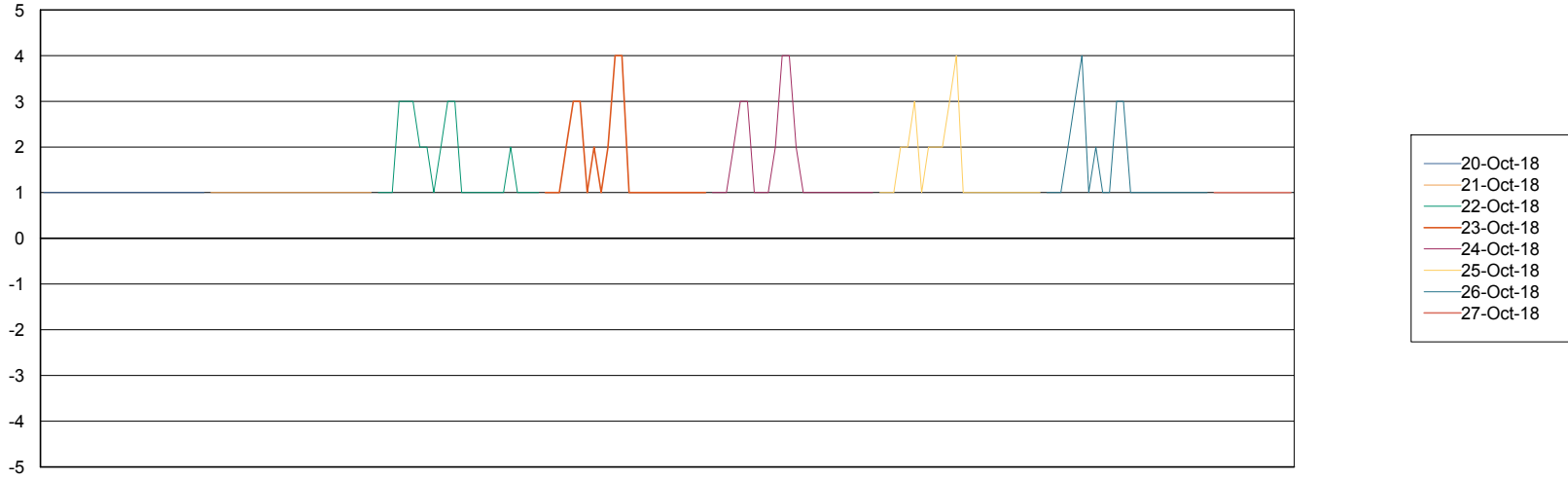
# Weekly SLA Customer Report

Customer AUJ\_Production  
Database ID 41



Standby Database Health AUJ\_Production

### Recovery lag for last 7 days



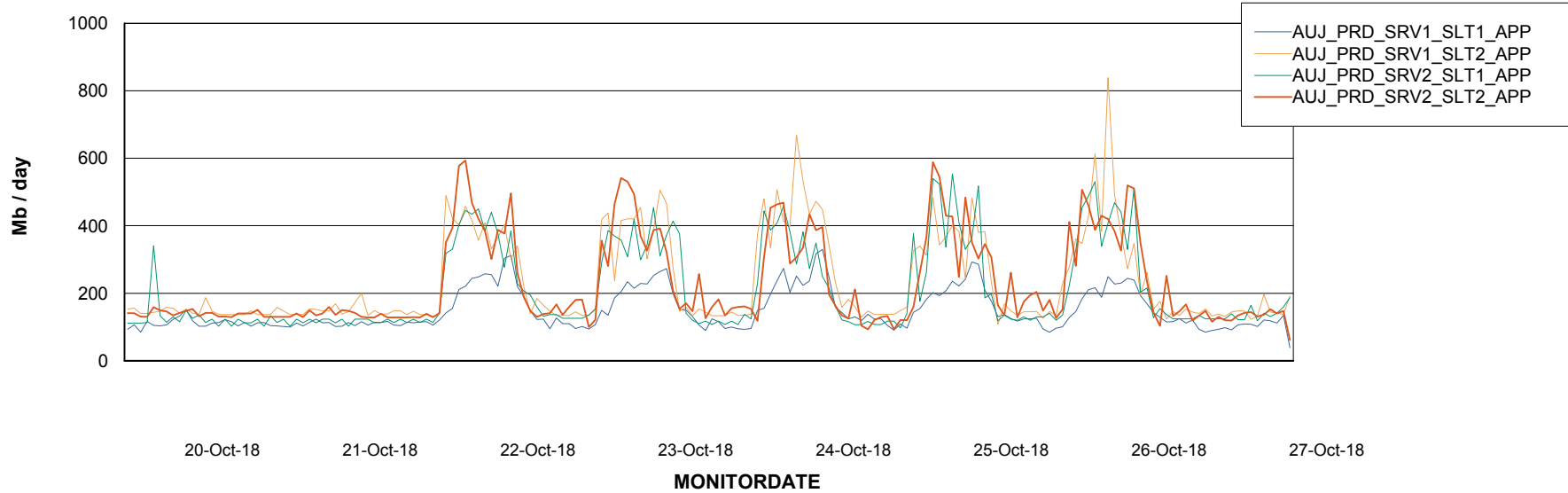
# Weekly SLA Customer Report

Customer AUJ\_Production  
Database ID 41

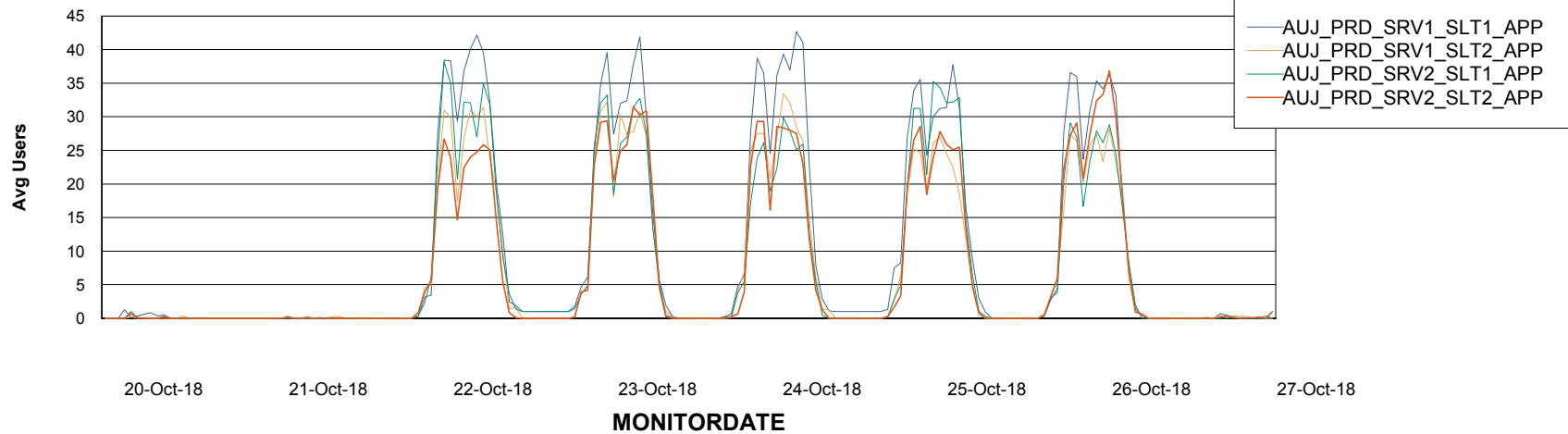


## ABSSolute Application Server Services

### Avg memory used per ABS Server Service



### Avg users per day per ABS server



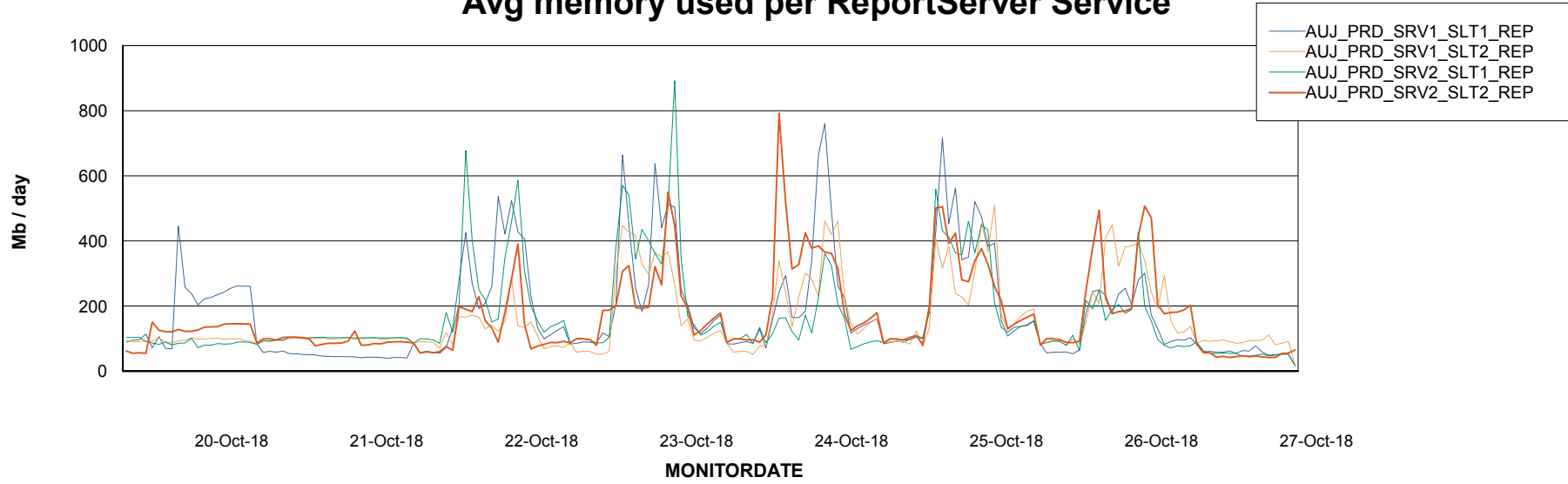
# Weekly SLA Customer Report

Customer AUJ\_Production  
Database ID 41



## ABSSolute Application ReportServer Services

### Avg memory used per ReportServer Service



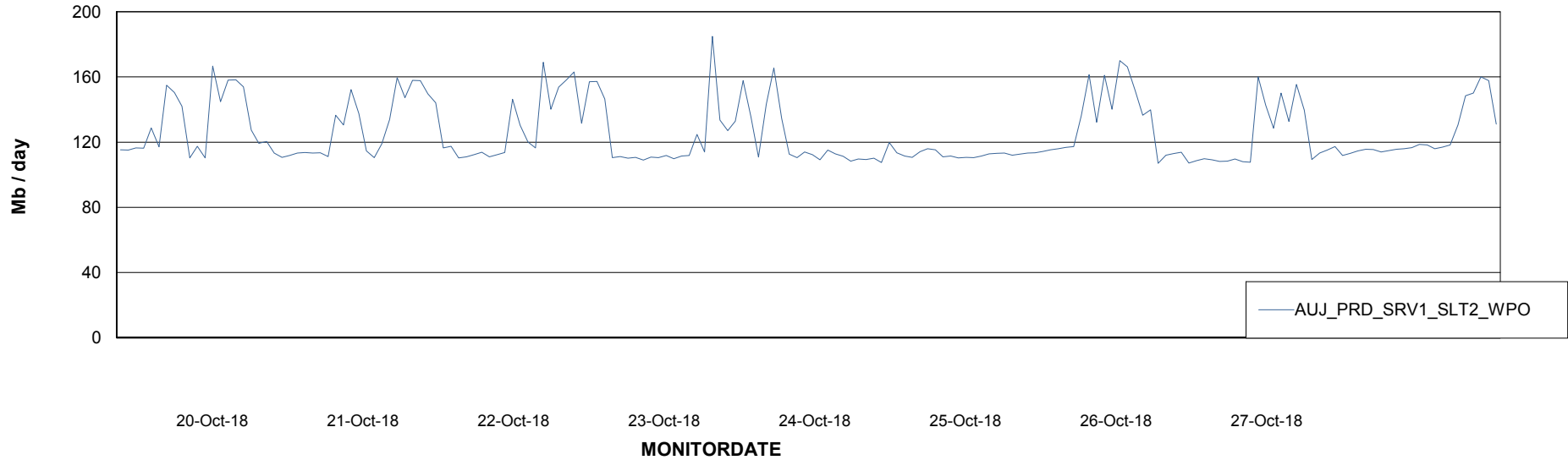
# Weekly SLA Customer Report

Customer AUJ\_Production  
Database ID 41



## ABSSolute Web Component Services

### Avg memory used per ABS Web component



# Weekly SLA Customer Report

Customer AUJ\_Production  
Database ID 41



## Disaster per ABS component

