

Weekly SLA Customer Report

Customer NIX_Production
Database ID 51



Harddisk Usage NIX_PRD_ABSAPP01

	Free disk space on c: (%)	Total disk space on c: (Gb)	Free disk space on e: (%)	Total disk space on e: (Gb)
25-Aug-18	88	207	99	98
24-Aug-18	88	207	99	98
23-Aug-18	88	207	99	98
22-Aug-18	88	207	99	98
21-Aug-18	88	207	99	98
20-Aug-18	88	207	99	98
19-Aug-18	88	207	99	98

Harddisk Usage NIX_PRD_ABSAPP03

	Free disk space on c: (%)	Total disk space on c: (Gb)
25-Aug-18	86	300
24-Aug-18	87	300
23-Aug-18	86	300
22-Aug-18	86	300
21-Aug-18	87	300
20-Aug-18	87	300
19-Aug-18	87	300

Weekly SLA Customer Report

Customer NIX_Production
 Database ID 51



Harddisk Usage NIX_PRD_ABSWEB02

	Free disk space on c: (%)	Total disk space on c: (Gb)	Free disk space on d: (%)	Total disk space on d: (Gb)
25-Aug-18	94	300	0	6
24-Aug-18	94	300	0	6
23-Aug-18	94	300	0	6
22-Aug-18	94	300	0	6
21-Aug-18	94	300	0	6
20-Aug-18	94	300	0	6
19-Aug-18	94	300	0	6

Harddisk Usage NIX_PRD_ORACLE_BI1

	Free disk space on c: (%)	Total disk space on c: (Gb)	Free disk space on e: (%)	Total disk space on e: (Gb)	Free disk space on f: (%)	Total disk space on f: (Gb)	Free disk space on g: (%)	Total disk space on g: (Gb)
25-Aug-18	41	279	56	558	34	279	61	558
24-Aug-18	41	279	56	558	34	279	57	558
23-Aug-18	41	279	57	558	34	279	58	558
22-Aug-18	40	279	57	558	34	279	59	558
21-Aug-18	40	279	57	558	34	279	61	558
20-Aug-18	39	279	57	558	34	279	61	558
19-Aug-18	40	279	57	558	34	279	63	558

Weekly SLA Customer Report

Customer NIX_Production
Database ID 51



Harddisk Usage NIX_PRD_ORCDB1

	Free disk space on c: (%)	Total disk space on c: (Gb)	Free disk space on d: (%)	Total disk space on d: (Gb)	Free disk space on e: (%)	Total disk space on e: (Gb)	Free disk space on f: (%)	Total disk space on f: (Gb)
25-Aug-18	82	554	82	586	80	605	30	293
24-Aug-18	82	554	82	586	80	605	32	293
23-Aug-18	82	554	81	586	80	605	34	293
22-Aug-18	82	554	81	586	80	605	36	293
21-Aug-18	82	554	81	586	80	605	40	293
20-Aug-18	82	554	81	586	80	605	43	293
19-Aug-18	82	554	81	586	80	605	47	293

Harddisk Usage NIX_PRD_ORCDB2

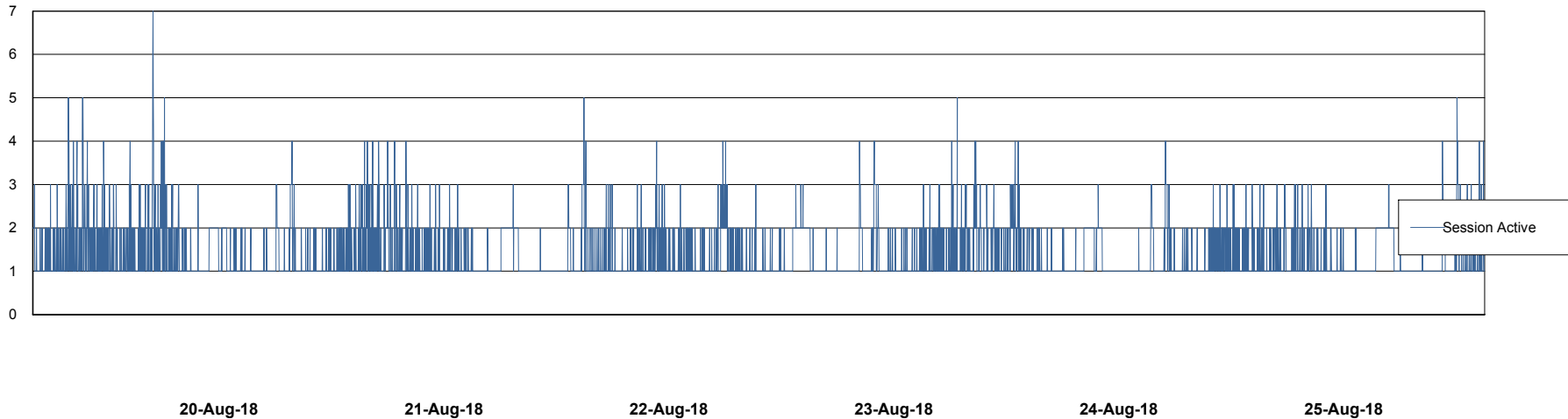
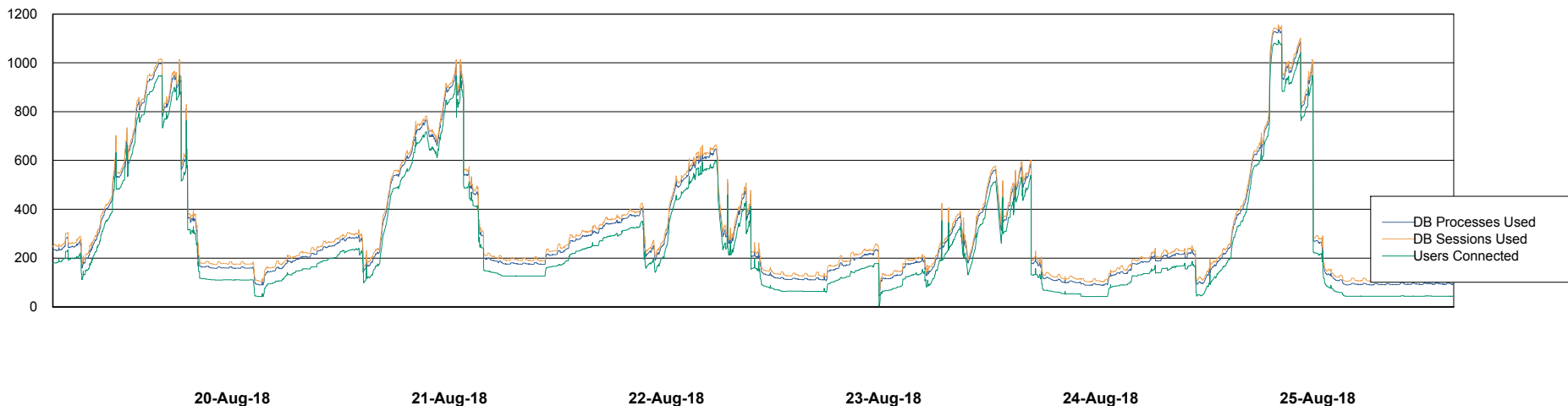
	Free disk space on c: (%)	Total disk space on c: (Gb)	Total disk space on d: (Gb)	Free disk space on e: (%)	Total disk space on e: (Gb)	Free disk space on f: (%)	Total disk space on f: (Gb)
25-Aug-18	94	574	488	82	684	85	488
24-Aug-18	94	574	488	82	684	85	488
23-Aug-18	94	574	488	82	684	86	488
22-Aug-18	94	574	488	82	684	86	488
21-Aug-18	94	574	488	82	684	87	488
20-Aug-18	94	574	488	82	684	88	488
19-Aug-18	94	574	488	82	684	88	488

Weekly SLA Customer Report

Customer NIX_Production
Database ID 51



Database Performance NIXDB_Production

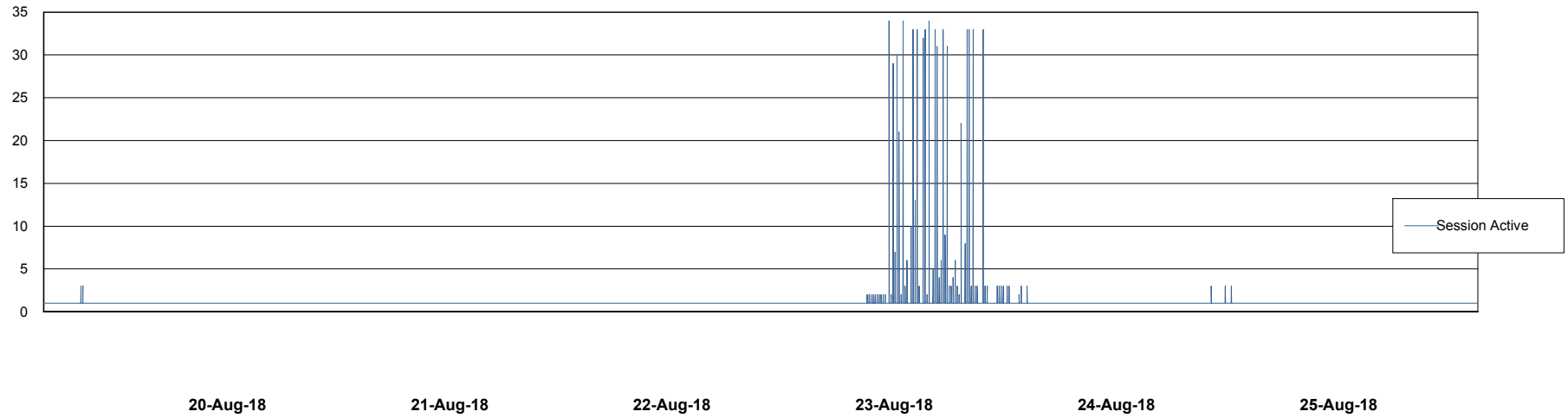
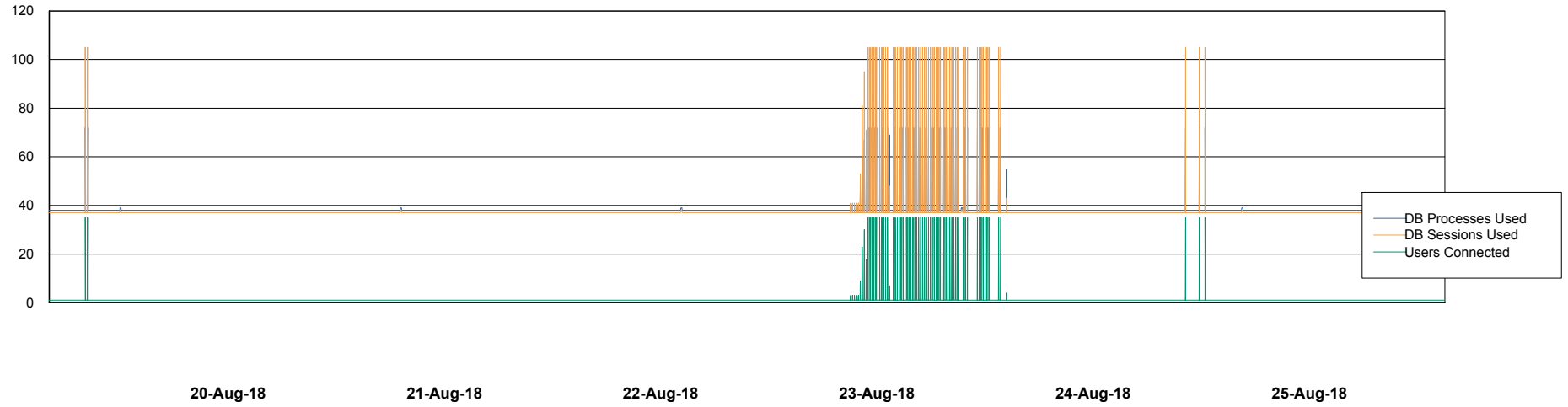


Weekly SLA Customer Report

Customer NIX_Production
Database ID 51



Database Performance NIXDB_Standby



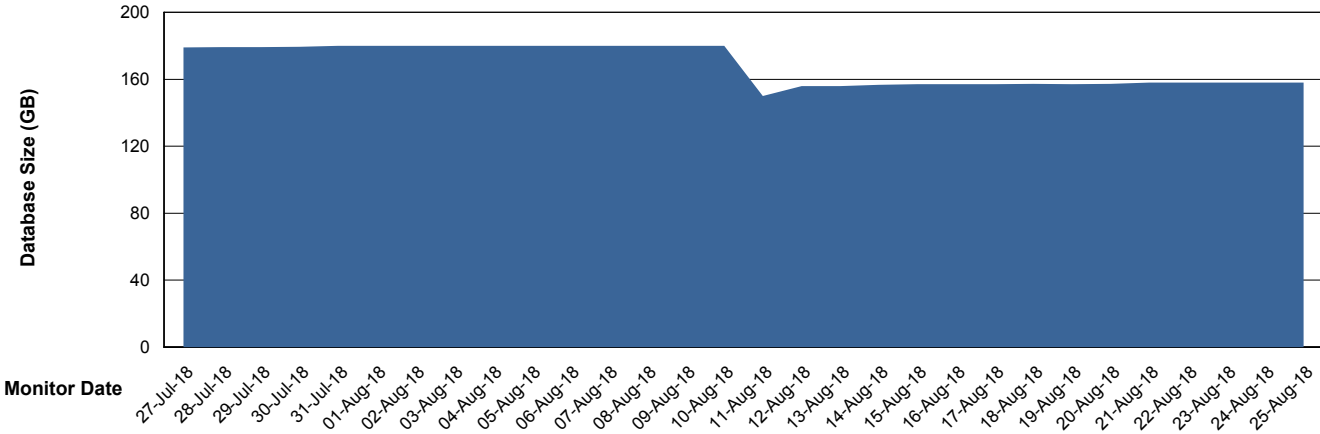
Weekly SLA Customer Report

Customer NIX_Production
 Database ID 51



DATABASE SIZE NIXDB_Production

Database growth over last month



Database Tablespace NIXDB_Production

Date	Tablespace Name	Filesize (Gb)	Usedsize (Gb)	Percentage free
25-Aug-18	ABSDATA	76	61	20
	INDX	120	95	21
24-Aug-18	ABSDATA	76	61	20
	INDX	120	95	21
23-Aug-18	ABSDATA	76	61	20
	INDX	120	95	21
22-Aug-18	ABSDATA	76	61	20
	INDX	120	95	21
21-Aug-18	ABSDATA	76	61	20
	INDX	120	95	21
20-Aug-18	ABSDATA	76	61	20
	INDX	120	95	21
19-Aug-18	ABSDATA	76	61	20
	INDX	120	95	21

Weekly SLA Customer Report

Customer NIX_Production
Database ID 51



Standby Database Health NIX_Production

Recovery lag for last 7 days



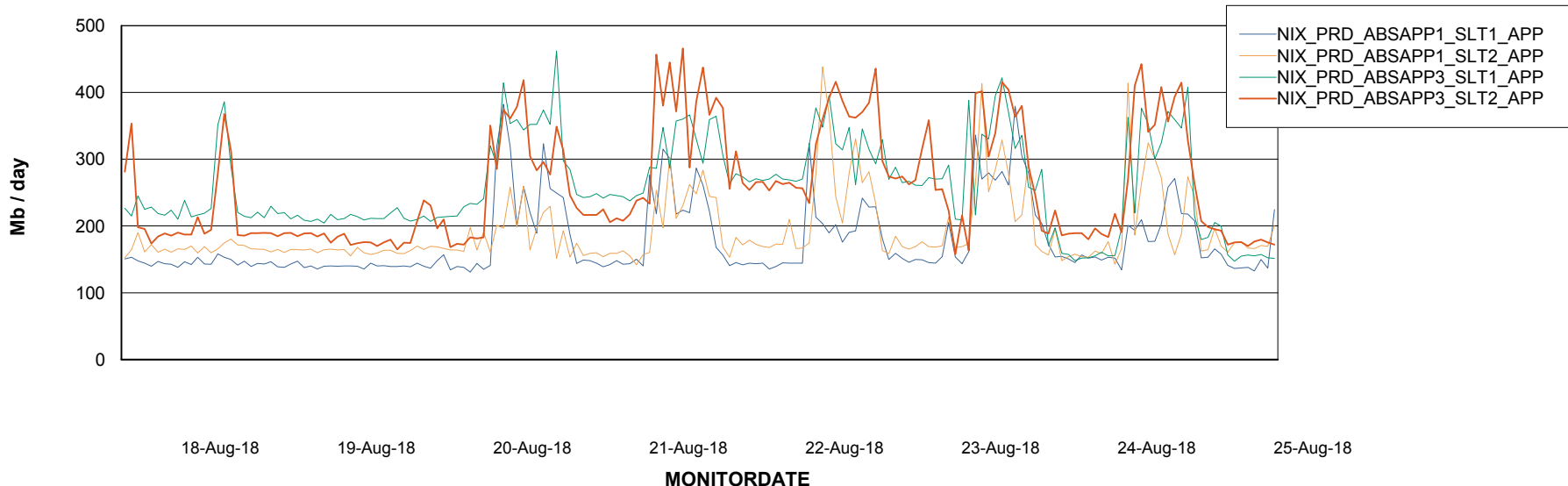
Weekly SLA Customer Report

Customer NIX_Production
Database ID 51

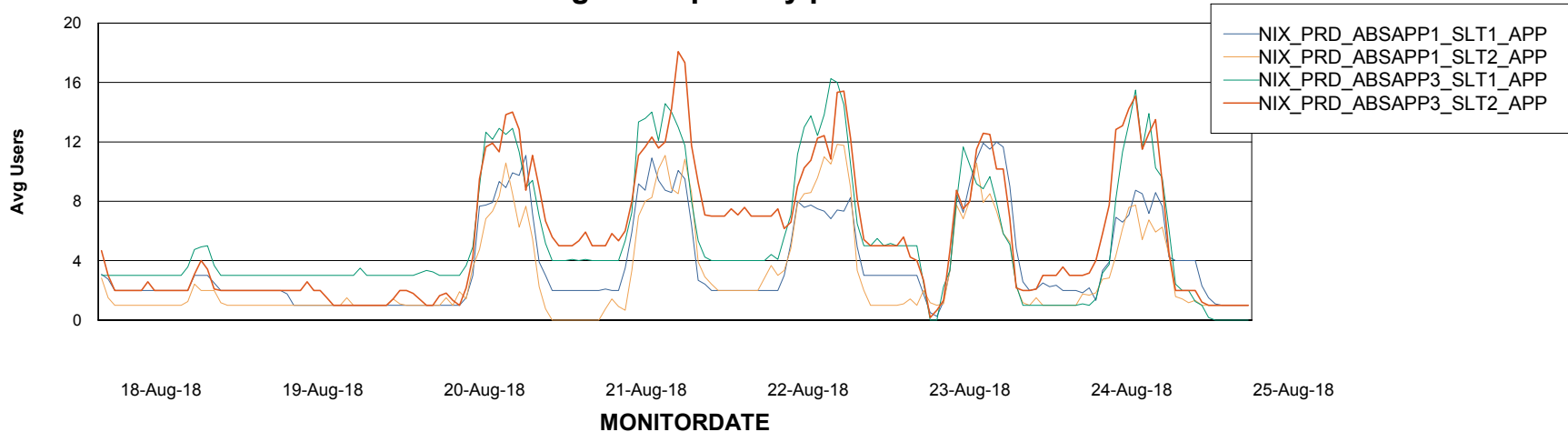


ABSSolute Application Server Services

Avg memory used per ABS Server Service



Avg users per day per ABS server



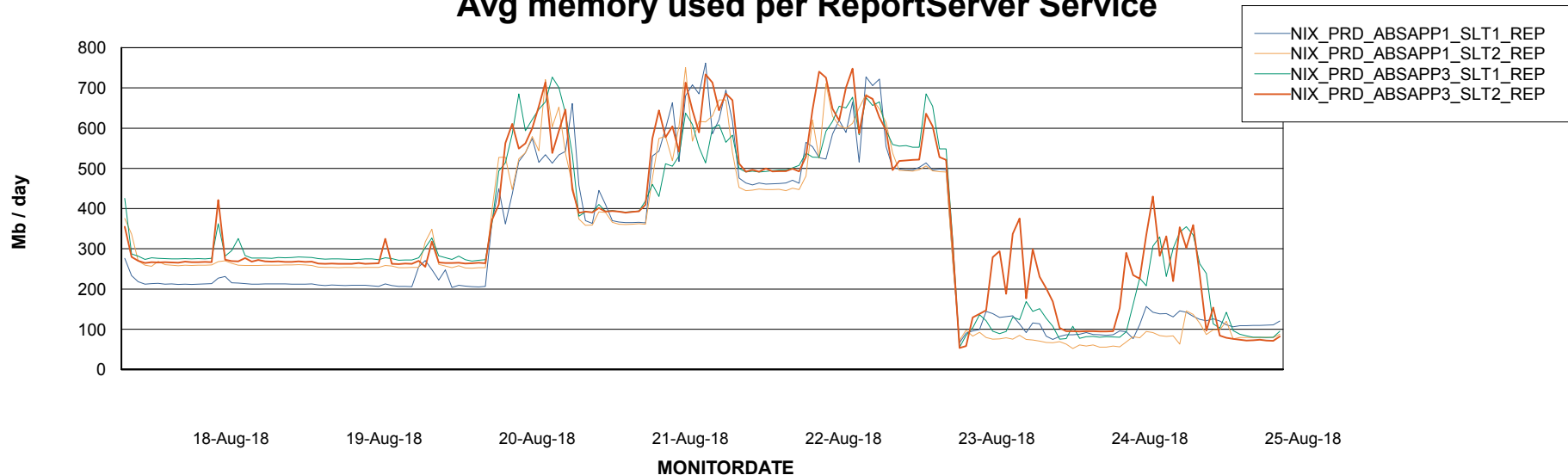
Weekly SLA Customer Report

Customer NIX_Production
Database ID 51



ABSSolute Application ReportServer Services

Avg memory used per ReportServer Service



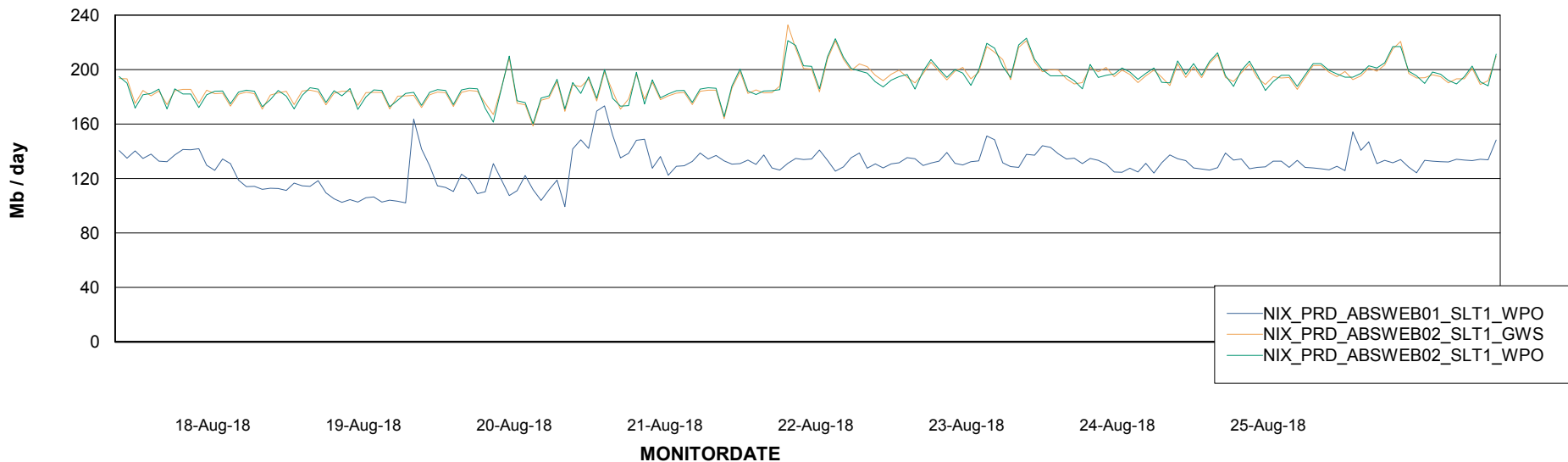
Weekly SLA Customer Report

Customer NIX_Production
Database ID 51



ABSSolute Web Component Services

Avg memory used per ABS Web component



Weekly SLA Customer Report

Customer NIX_Production
Database ID 51



Disaster per ABS component

