

Weekly SLA Customer Report

Customer NIX_Production
 Database ID 51



Harddisk Usage NIX_PRD_ABSAPP02

	Free disk space on c: (%)	Total disk space on c: (Gb)
21-Jul-18	82	200
20-Jul-18	82	200
19-Jul-18	82	200
18-Jul-18	82	200
17-Jul-18	82	200
16-Jul-18	82	200
15-Jul-18	82	200

Harddisk Usage NIX_PRD_ABSAPP03

	Free disk space on c: (%)	Total disk space on c: (Gb)
21-Jul-18	67	200
20-Jul-18	67	200
19-Jul-18	68	200
18-Jul-18	68	200
17-Jul-18	67	200
16-Jul-18	67	200
15-Jul-18	67	200

Weekly SLA Customer Report

Customer NIX_Production
Database ID 51



Harddisk Usage NIX_PRD_ABSWEB01

	Free disk space on c: (%)	Total disk space on c: (Gb)
21-Jul-18	91	300
20-Jul-18	91	300
19-Jul-18	91	300
18-Jul-18	91	300
17-Jul-18	91	300
16-Jul-18	91	300
15-Jul-18	91	300

Harddisk Usage NIX_PRD_ORACLE_B11

	Free disk space on c: (%)	Total disk space on c: (Gb)	Free disk space on e: (%)	Total disk space on e: (Gb)	Free disk space on f: (%)	Total disk space on f: (Gb)	Free disk space on g: (%)	Total disk space on g: (Gb)
21-Jul-18	42	279	56	558	34	279	58	558
20-Jul-18	42	279	57	558	34	279	55	558
19-Jul-18	42	279	57	558	34	279	56	558
18-Jul-18	44	279	57	558	34	279	57	558
17-Jul-18	42	279	57	558	34	279	58	558
16-Jul-18	42	279	57	558	35	279	59	558
15-Jul-18	42	279	57	558	35	279	60	558

Weekly SLA Customer Report

Customer NIX_Production
Database ID 51



Harddisk Usage NIX_PRD_ORCDB1

	Free disk space on c: (%)	Total disk space on c: (Gb)	Free disk space on e: (%)	Total disk space on e: (Gb)	Free disk space on f: (%)	Total disk space on f: (Gb)	Free disk space on g: (%)	Total disk space on g: (Gb)
21-Jul-18	55	279	66	558	74	558	58	279
20-Jul-18	55	279	66	558	74	558	58	279
19-Jul-18	55	279	66	558	74	558	58	279
18-Jul-18	55	279	66	558	75	558	58	279
17-Jul-18	55	279	66	558	76	558	59	279
16-Jul-18	55	279	66	558	76	558	59	279
15-Jul-18	55	279	66	558	76	558	57	279

Harddisk Usage NIX_PRD_ORCDB2

	Free disk space on c: (%)	Total disk space on c: (Gb)	Free disk space on e: (%)	Total disk space on e: (Gb)	Free disk space on f: (%)	Total disk space on f: (Gb)	Free disk space on g: (%)	Total disk space on g: (Gb)
21-Jul-18	55	279	66	558	74	558	58	279
20-Jul-18	55	279	66	558	74	558	58	279
19-Jul-18	55	279	66	558	74	558	58	279
18-Jul-18	55	279	66	558	75	558	58	279
17-Jul-18	55	279	66	558	76	558	59	279
16-Jul-18	55	279	66	558	76	558	59	279
15-Jul-18	55	279	66	558	76	558	57	279

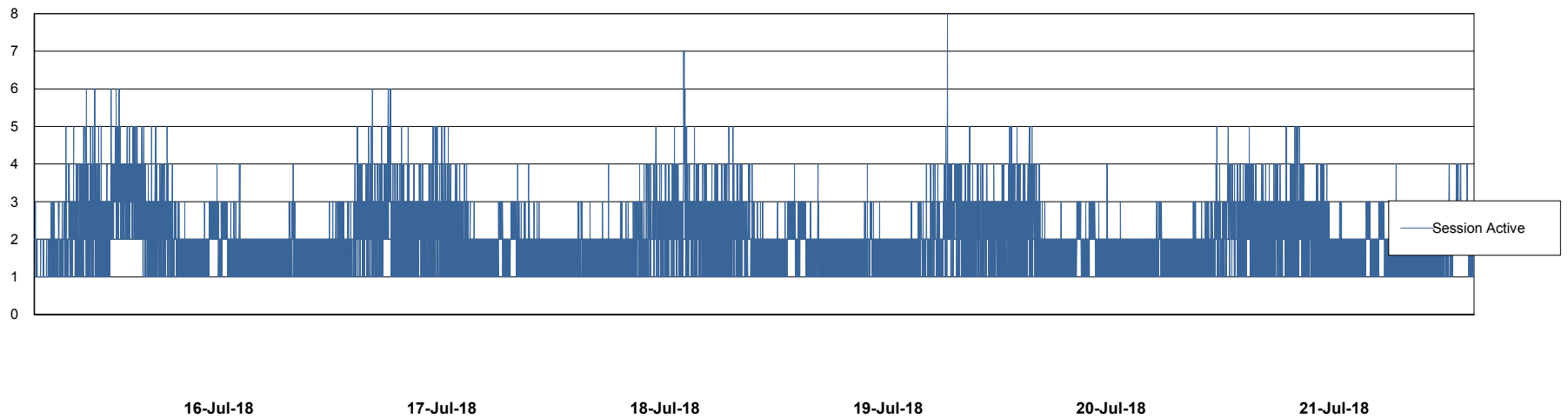
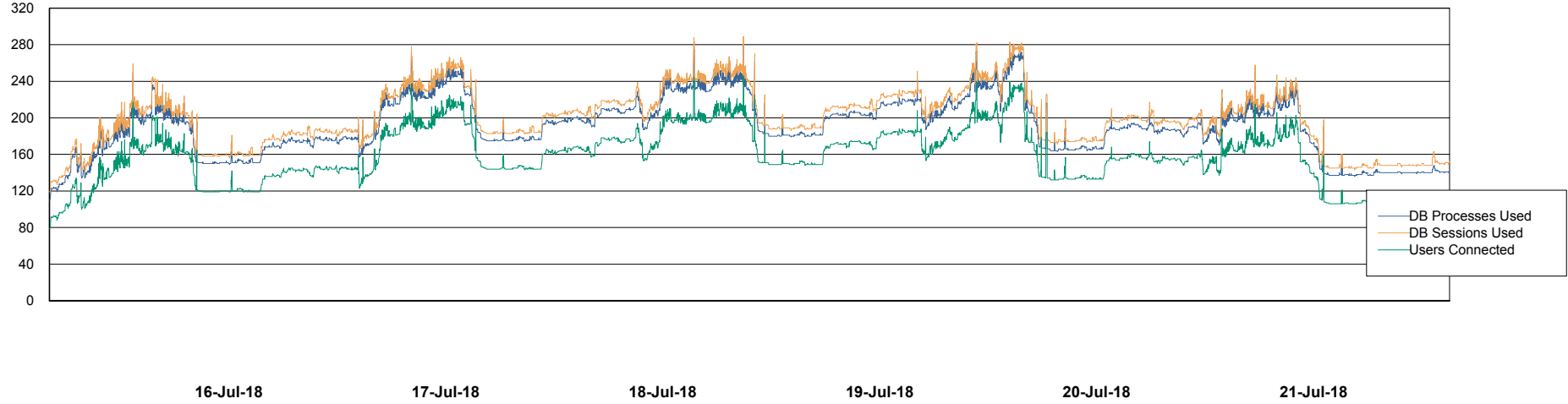
Weekly SLA Customer Report

Customer NIX_Production
Database ID 51



Database Performance NIXDB_Production

DB Processes Max 500
DB Sessions Max 800



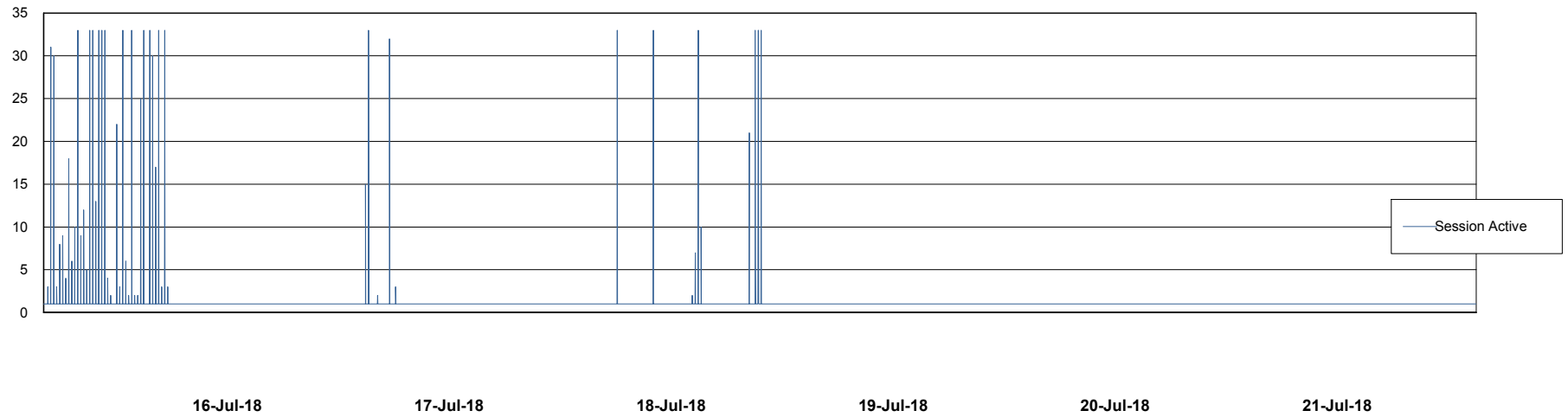
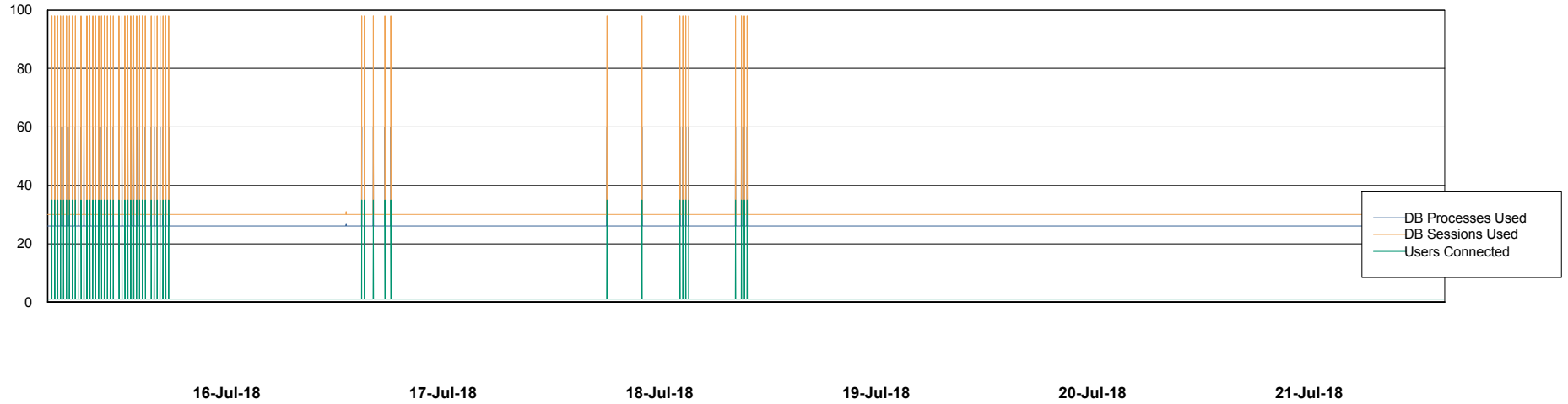
Weekly SLA Customer Report

Customer NIX_Production
Database ID 51



Database Performance NIXDB_Standby

DB Processes Max 500
DB Sessions Max 800



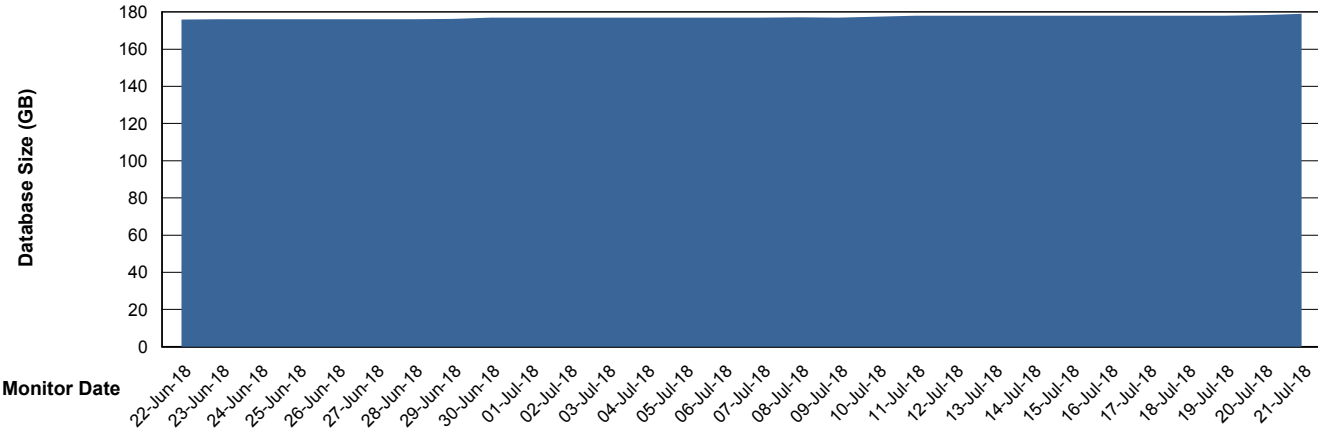
Weekly SLA Customer Report

Customer NIX_Production
 Database ID 51



DATABASE SIZE NIXDB_Production

Database growth over last month



Database Tablespace NIXDB_Production

Date	Tablespace Name	Filesize (Gb)	Usedsize (Gb)	Percentage free
21-Jul-18	ABSDATA	74	61	18
	INDX	144	117	19
20-Jul-18	ABSDATA	74	61	18
	INDX	144	117	19
19-Jul-18	ABSDATA	74	60	19
	INDX	144	116	19
18-Jul-18	ABSDATA	74	60	19
	INDX	144	116	19
17-Jul-18	ABSDATA	74	60	19
	INDX	135	116	14
16-Jul-18	ABSDATA	74	60	19
	INDX	135	116	14
15-Jul-18	ABSDATA	74	60	19
	INDX	135	116	14

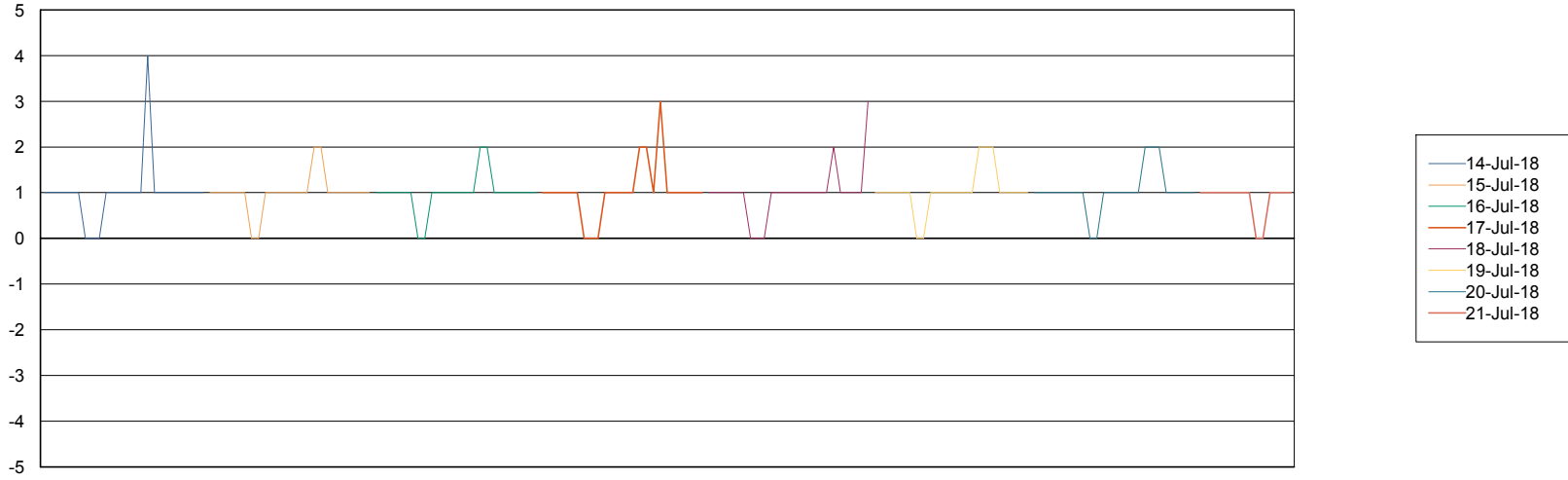
Weekly SLA Customer Report

Customer NIX_Production
Database ID 51



Standby Database Health NIX_Production

Recovery lag for last 7 days



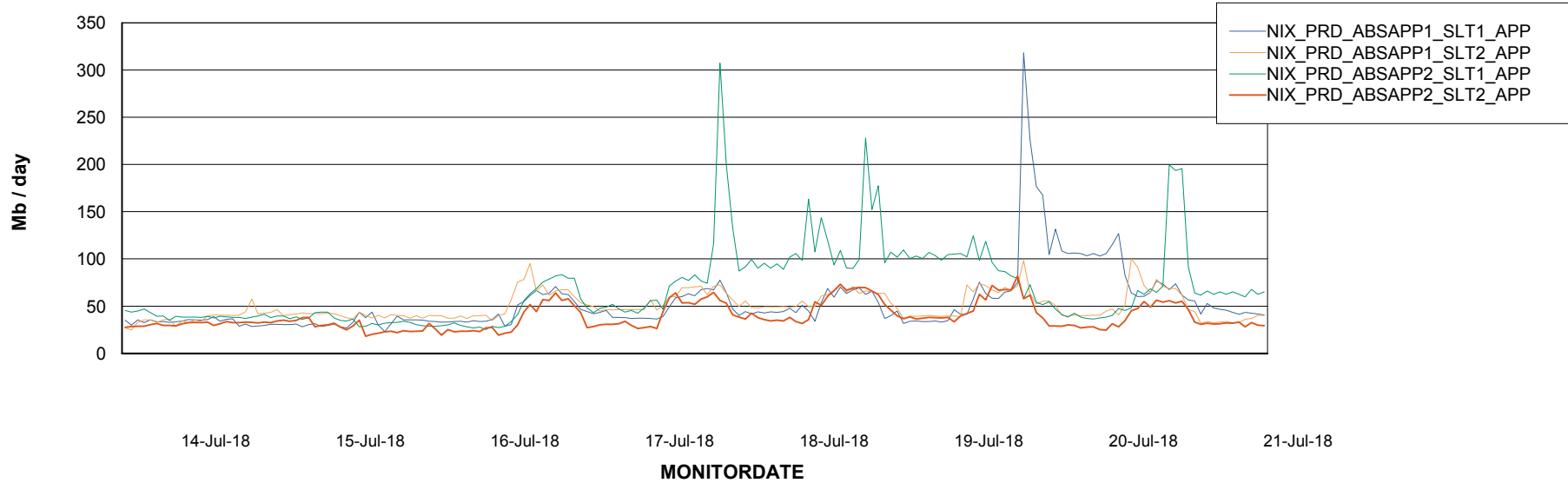
Weekly SLA Customer Report

Customer NIX_Production
Database ID 51

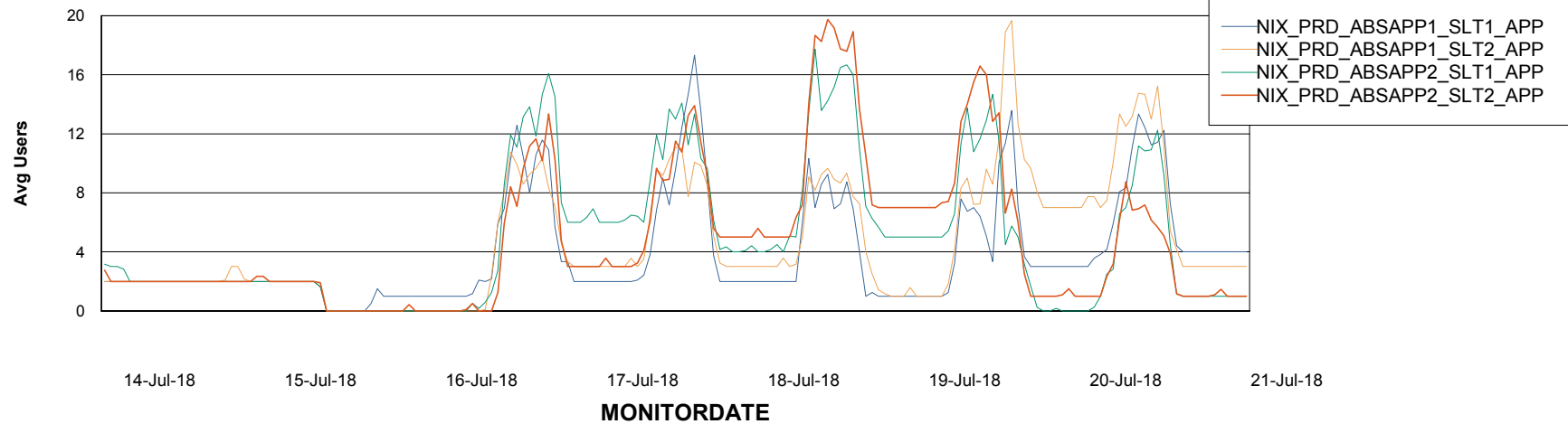


ABSSolute Application Server Services

Avg memory used per ABS Server Service



Avg users per day per ABS server



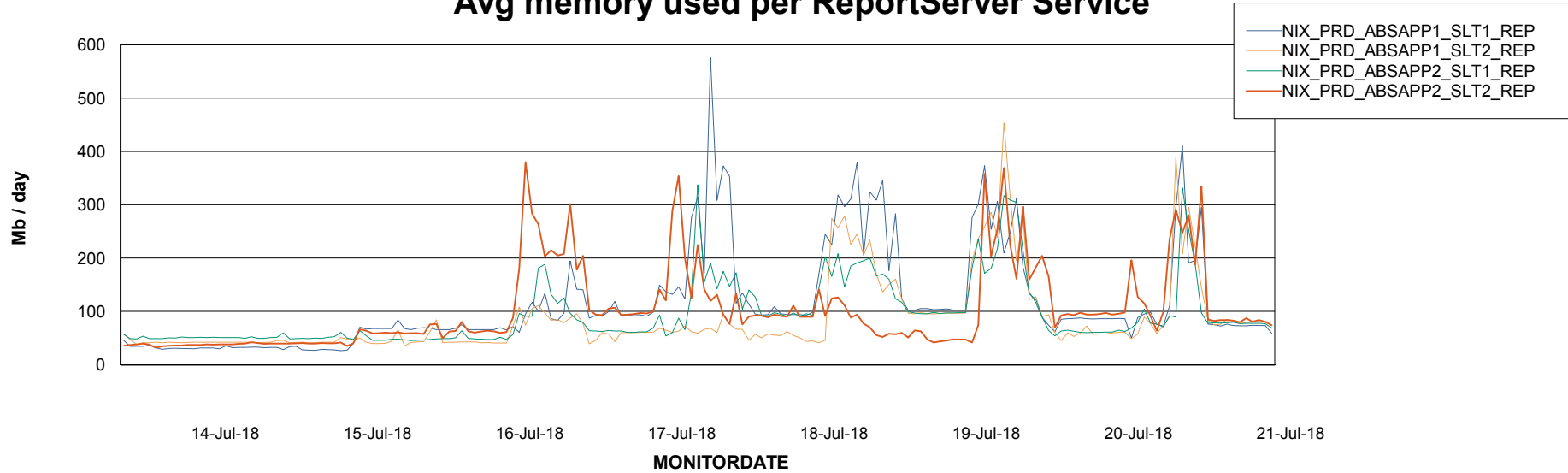
Weekly SLA Customer Report

Customer NIX_Production
Database ID 51



ABSSolute Application ReportServer Services

Avg memory used per ReportServer Service



Disaster per ABS component

