

# Weekly SLA Customer Report

Customer AUJ\_Production  
Database ID 41



## Harddisk Usage AUJ\_PRD\_ABS\_APP1

	Free disk space on / (%)	Total disk space on / (Gb)	Used disk space on / (Gb)
07-Jul-18	12	241	201
06-Jul-18	12	241	201
05-Jul-18	12	241	201
04-Jul-18	19	241	186
03-Jul-18	22	241	178
02-Jul-18	22	241	178
01-Jul-18	22	241	178

## Harddisk Usage AUJ\_PRD\_ABS\_APP2

	Free disk space on / (%)	Total disk space on / (Gb)	Used disk space on / (Gb)
07-Jul-18	24	241	175
06-Jul-18	24	241	175
05-Jul-18	24	241	174
04-Jul-18	24	241	173
03-Jul-18	24	241	173
02-Jul-18	24	241	173
01-Jul-18	25	241	173

# Weekly SLA Customer Report

Customer AUJ\_Production  
Database ID 41



## Harddisk Usage AUJ\_PRD\_ABS\_APP3

	Free disk space on / (%)	Total disk space on / (Gb)	Used disk space on / (Gb)
07-Jul-18	91	247	22
06-Jul-18	91	247	22
05-Jul-18	91	247	22
04-Jul-18	91	247	22
03-Jul-18	91	247	22
02-Jul-18	91	247	22
01-Jul-18	91	247	22

## Harddisk Usage AUJ\_PRD\_ORACLE4

	Free disk space on / (%)	Total disk space on / (Gb)	Used disk space on / (Gb)	Free disk space on /bk (%)	Total disk space on /bk (Gb)	Used disk space on /bk (Gb)	Free disk space on /data (%)	Total disk space on /data (Gb)	Used disk space on /da /data
07-Jul-18	98	534	11	67	4,436	1,407	78	4,436	908
06-Jul-18	98	534	11	66	4,436	1,423	78	4,436	908
05-Jul-18	98	534	11	66	4,436	1,422	78	4,436	908
04-Jul-18	98	534	11	66	4,436	1,421	78	4,436	908
03-Jul-18	98	534	11	66	4,436	1,420	78	4,436	908
02-Jul-18	98	534	11	66	4,436	1,418	78	4,436	908
01-Jul-18	98	534	11	66	4,436	1,412	78	4,436	908

# Weekly SLA Customer Report

Customer AUJ\_Production  
Database ID 41



## Harddisk Usage AUJ\_PRD\_ORACLE5

	Free disk space on / (%)	Total disk space on / (Gb)	Used disk space on / (Gb)	Free disk space on /bk (%)	Total disk space on /bk (Gb)	Used disk space on /bk (Gb)	Free disk space on /data (%)	Total disk space on /data (Gb)	Used disk space on /da /data
07-Jul-18	98	534	12	95	4,436	231	78	4,436	911
06-Jul-18	98	534	12	94	4,436	235	78	4,436	911
05-Jul-18	98	534	12	94	4,436	235	78	4,436	911
04-Jul-18	98	534	12	94	4,436	235	78	4,436	911
03-Jul-18	98	534	12	94	4,436	235	78	4,436	911
02-Jul-18	98	534	12	95	4,436	228	78	4,436	911
01-Jul-18	98	534	12	95	4,436	223	78	4,436	911

## Harddisk Usage AUJ\_PRD\_ORACLE6

	Free disk space on / (%)	Total disk space on / (Gb)	Used disk space on / (Gb)	Free disk space on /bk (%)	Total disk space on /bk (Gb)	Used disk space on /bk (Gb)	Free disk space on /data (%)	Total disk space on /data (Gb)	Used disk space on /da /data
07-Jul-18	87	534	66	87	534	66	79	4,436	903
06-Jul-18	86	534	70	86	534	70	79	4,436	903
05-Jul-18	86	534	70	86	534	70	79	4,436	903
04-Jul-18	86	534	70	86	534	70	79	4,436	903
03-Jul-18	86	534	69	86	534	69	79	4,436	903
02-Jul-18	88	534	60	88	534	60	79	4,436	903
01-Jul-18	89	534	56	89	534	56	79	4,436	903

# Weekly SLA Customer Report

Customer AUJ\_Production  
Database ID 41



Harddisk Usage AUJ\_PRD\_ORACLE\_BI1

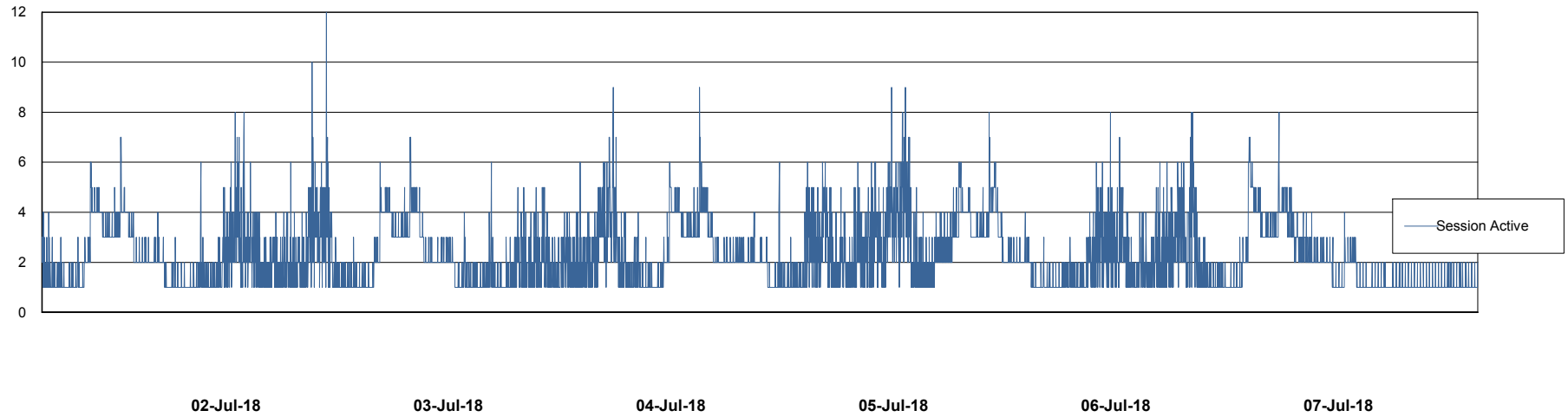
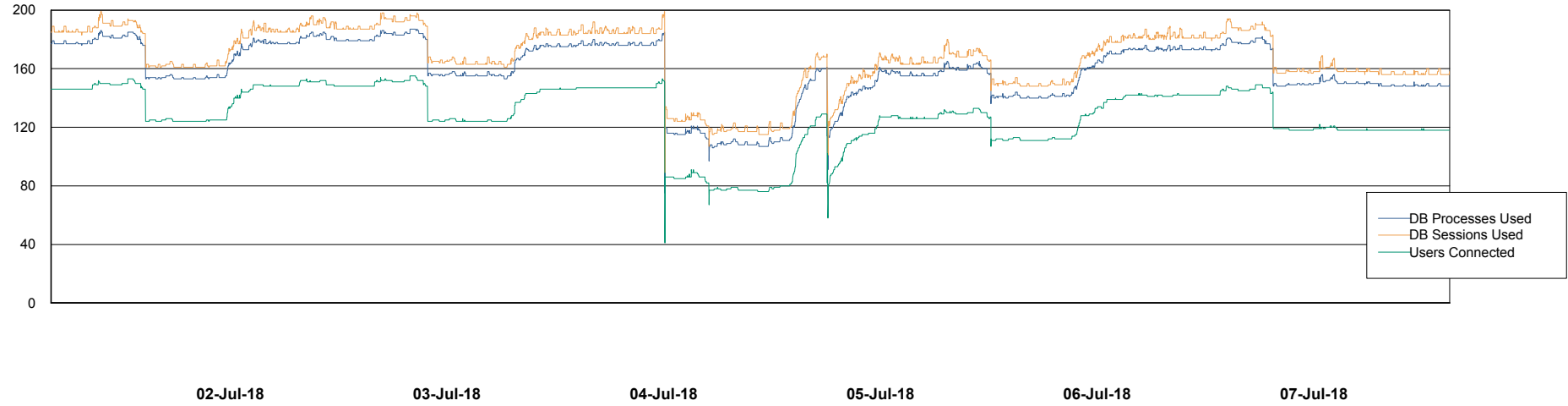
	Free disk space on / (%)	Total disk space on / (Gb)	Used disk space on / (Gb)
07-Jul-18	8	526	458
06-Jul-18	9	526	454
05-Jul-18	9	526	454
04-Jul-18	9	526	454
03-Jul-18	9	526	454
02-Jul-18	9	526	453
01-Jul-18	8	526	456

# Weekly SLA Customer Report

Customer AUJ\_Production  
Database ID 41



## Database Performance AUJ\_DB4\_Primary

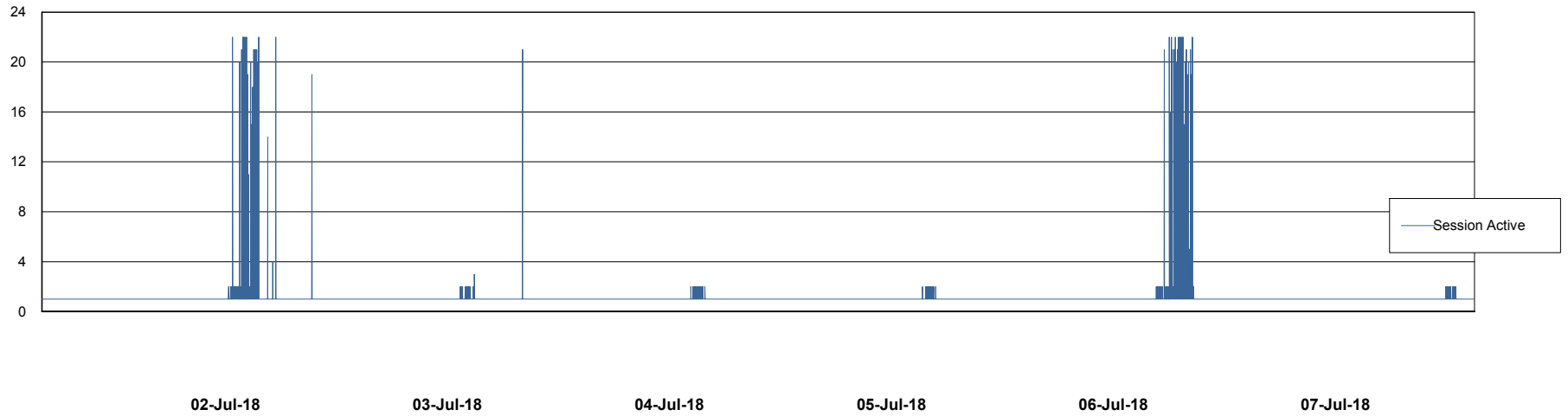
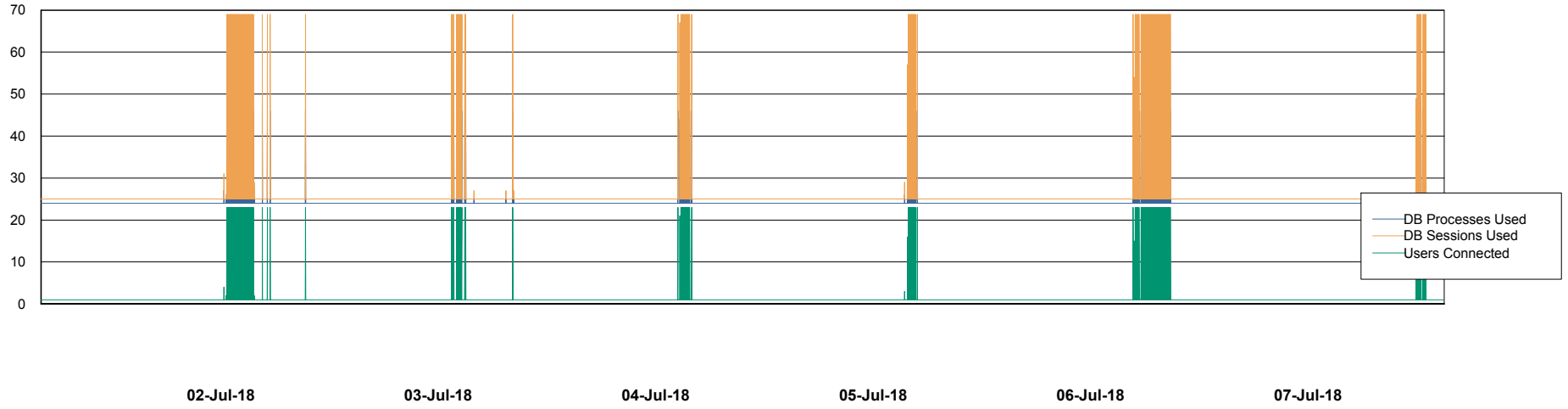


# Weekly SLA Customer Report

Customer AUJ\_Production  
Database ID 41



## Database Performance AUJ\_DB5\_Standby

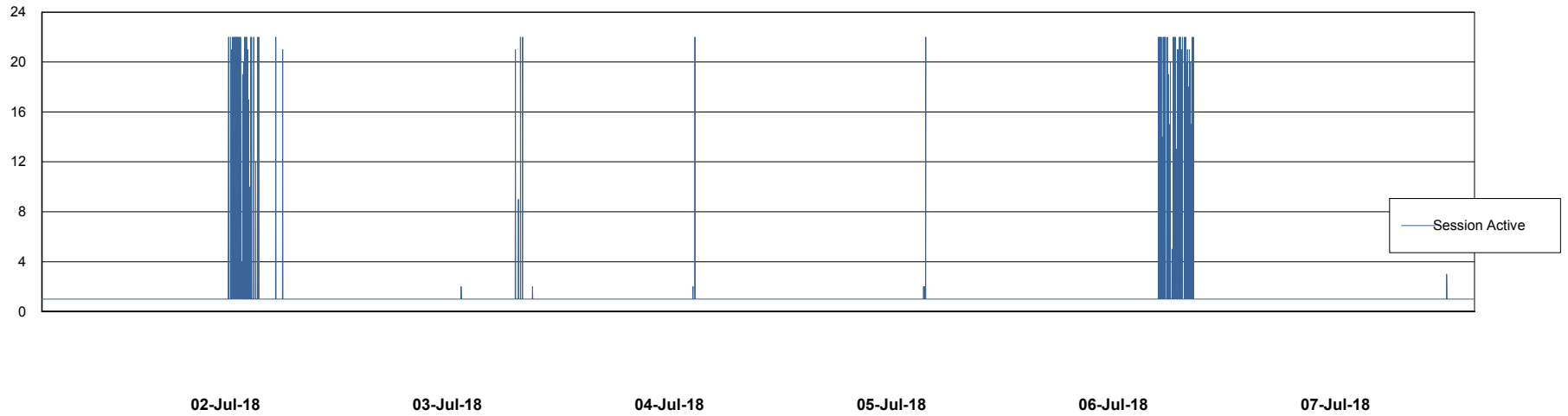
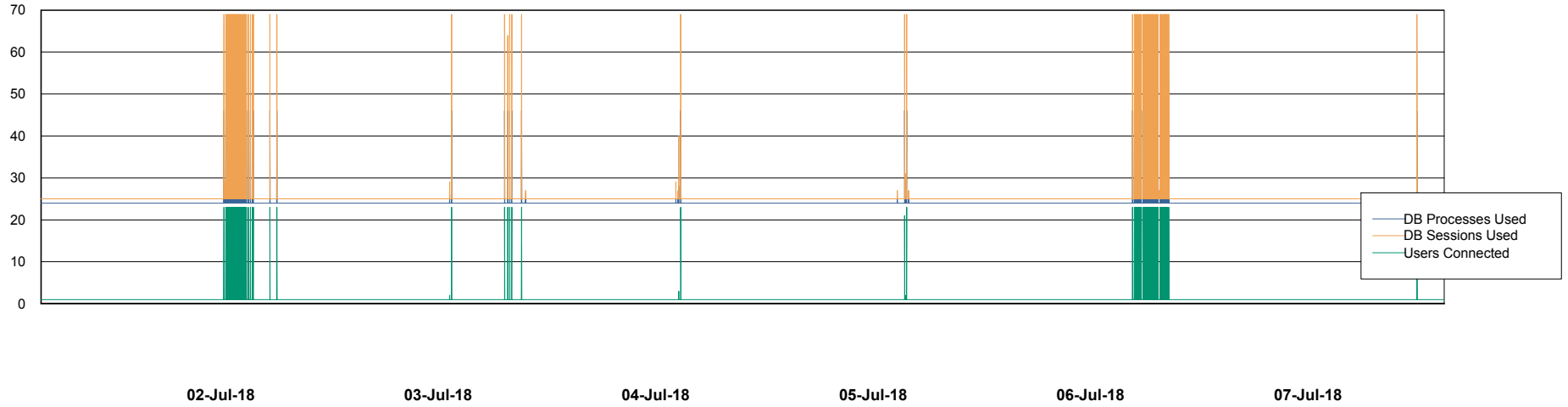


# Weekly SLA Customer Report

Customer AUJ\_Production  
Database ID 41



## Database Performance AUJ\_DB6\_Standby2

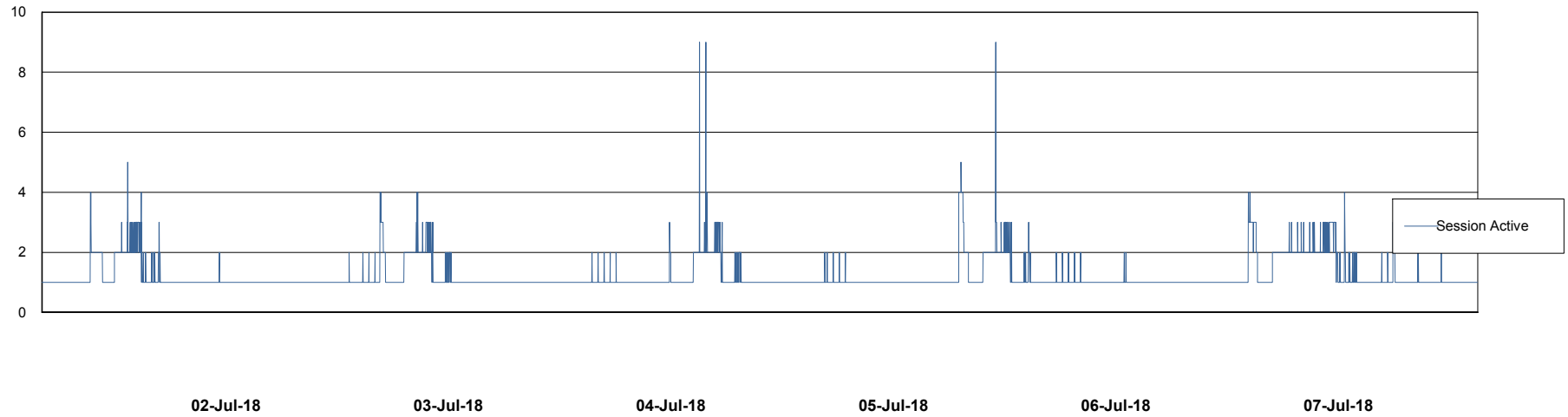
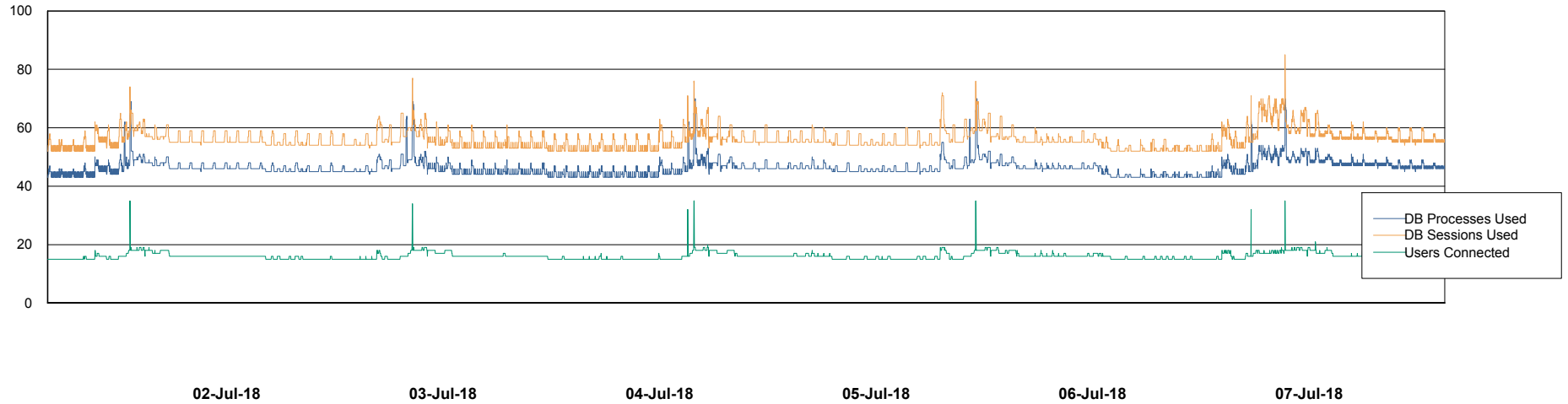


# Weekly SLA Customer Report

Customer AUJ\_Production  
Database ID 41



## Database Performance AUJDB\_BI

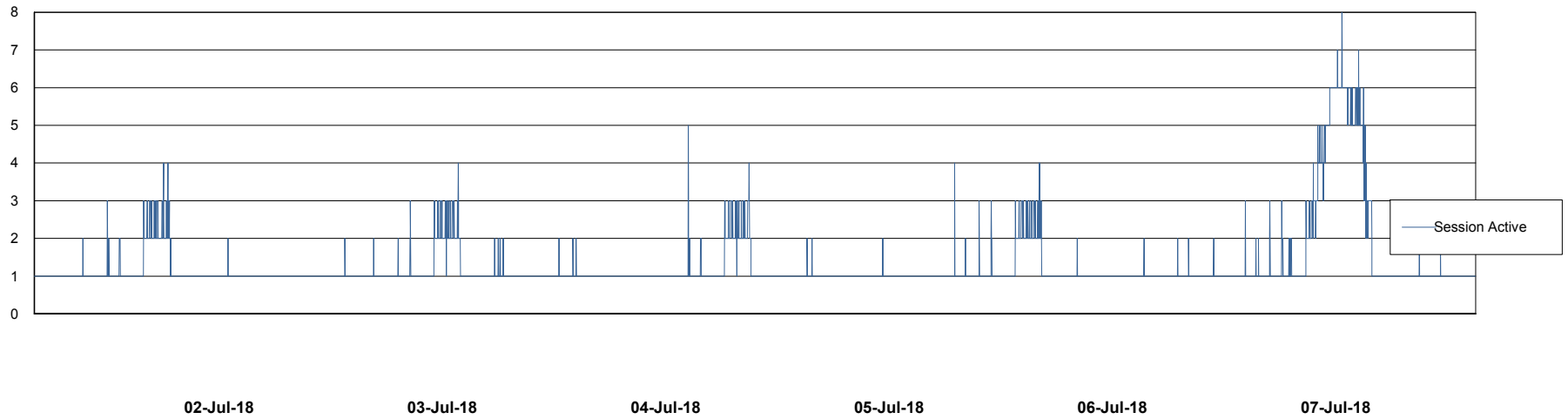
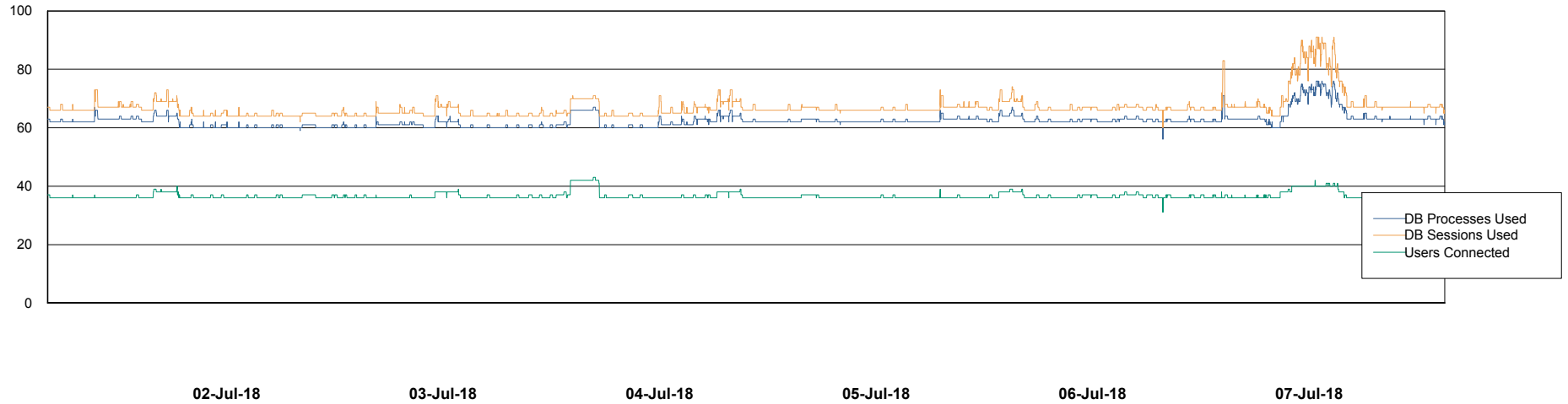


# Weekly SLA Customer Report

Customer AUJ\_Production  
Database ID 41



## Database Performance AUJDB\_BI\_TS1



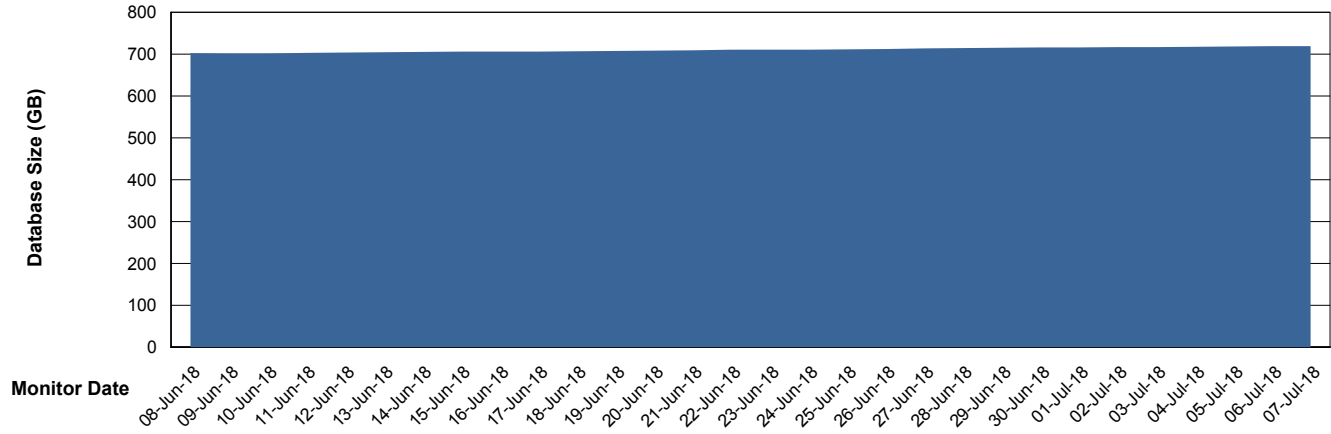
# Weekly SLA Customer Report

Customer AUJ\_Production  
Database ID 41



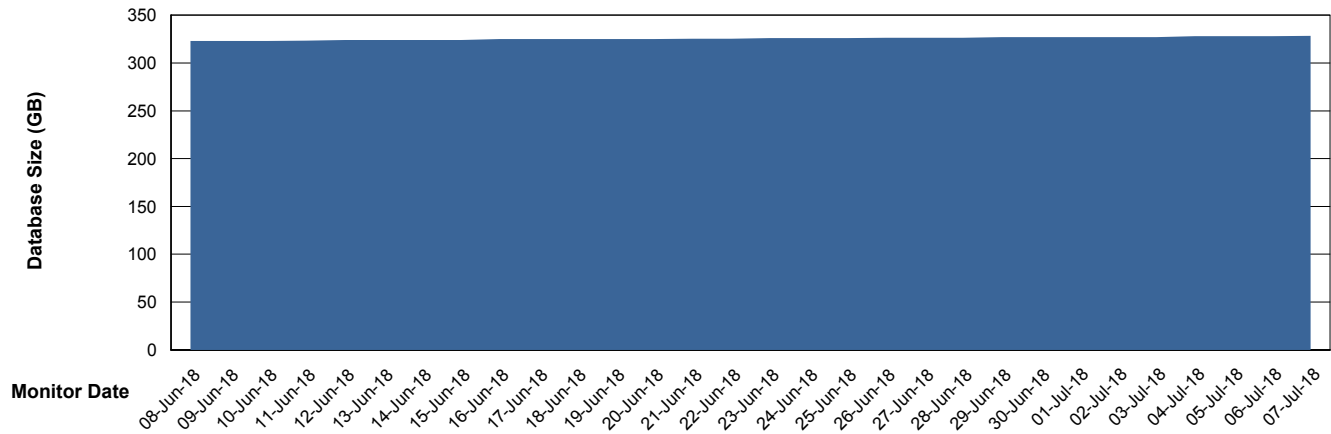
DATABASE SIZE AUJ\_DB4\_Primary

### Database growth over last month



DATABASE SIZE AUJDB\_BI

### Database growth over last month



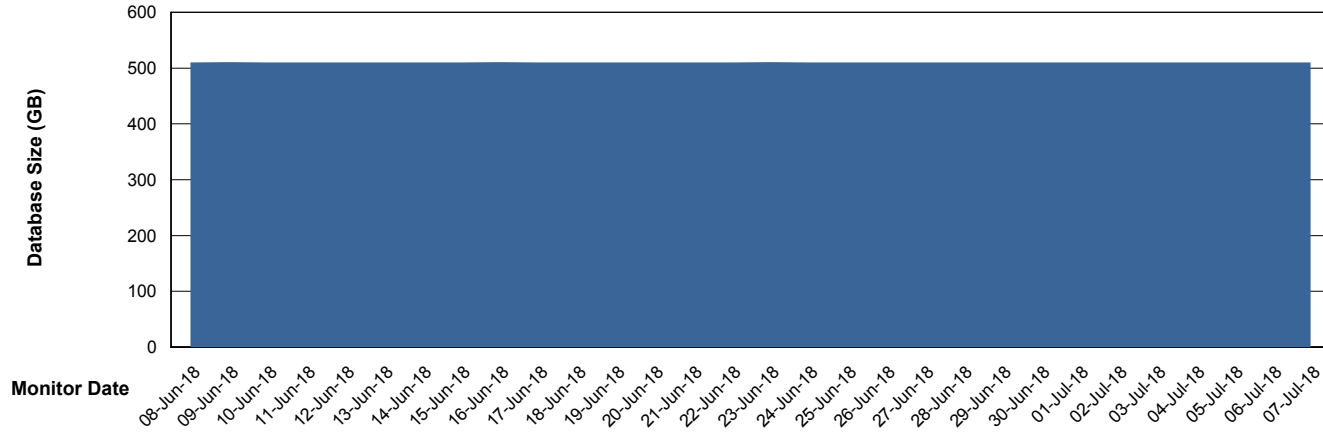
# Weekly SLA Customer Report

Customer AUJ\_Production  
Database ID 41



DATABASE SIZE AUJDB\_BI\_TS1

### Database growth over last month



# Weekly SLA Customer Report

Customer AUJ\_Production  
 Database ID 41



Database Tablespace AUJ\_DB4\_Primary

Date	Tablespace Name	Filesize (Gb)	Usedsize (Gb)	Percentage free
07-Jul-18	ABSDATA	404	335	17
	INDX	444	383	14
06-Jul-18	ABSDATA	404	335	17
	INDX	444	383	14
05-Jul-18	ABSDATA	404	334	17
	INDX	444	383	14
04-Jul-18	ABSDATA	404	334	17
	INDX	444	383	14
03-Jul-18	ABSDATA	404	334	17
	INDX	444	382	14
02-Jul-18	ABSDATA	404	333	18
	INDX	444	382	14
01-Jul-18	ABSDATA	404	333	18
	INDX	444	381	14

# Weekly SLA Customer Report

Customer AUJ\_Production  
 Database ID 41



Database Tablespace AUJDB\_BI

Date	Tablespace Name	Filesize (Gb)	Usedsize (Gb)	Percentage free
07-Jul-18	ABSDATA	113	101	11
	INDX	242	223	8
06-Jul-18	ABSDATA	113	101	11
	INDX	242	223	8
05-Jul-18	ABSDATA	113	101	11
	INDX	242	223	8
04-Jul-18	ABSDATA	113	101	11
	INDX	242	222	8
03-Jul-18	ABSDATA	113	101	11
	INDX	242	222	8
02-Jul-18	ABSDATA	113	101	11
	INDX	242	222	8
01-Jul-18	ABSDATA	113	101	11
	INDX	242	222	8

# Weekly SLA Customer Report

Customer AUJ\_Production  
 Database ID 41



Database Tablespace AUJDB\_BI\_TS1

Date	Tablespace Name	Filesize (Gb)	Usedsize (Gb)	Percentage free
07-Jul-18	ABSDATA	282	220	22
	INDX	410	287	30
06-Jul-18	ABSDATA	282	220	22
	INDX	410	287	30
05-Jul-18	ABSDATA	282	220	22
	INDX	410	287	30
04-Jul-18	ABSDATA	282	220	22
	INDX	410	287	30
03-Jul-18	ABSDATA	282	220	22
	INDX	410	287	30
02-Jul-18	ABSDATA	282	220	22
	INDX	410	287	30
01-Jul-18	ABSDATA	282	220	22
	INDX	410	287	30

BI Status and last ETL error for AUJDB\_BI

	Sun 1/7/2018	Mon 2/7/2018	Tue 3/7/2018	Wed 4/7/2018	Thu 5/7/2018	Fri 6/7/2018	Sat 7/7/2018
<b>ABS DataWarehouse ETL Health</b>	OK	OK	OK	OK	OK	OK	OK
<b>ABS DWHStaging ETL Health</b>	OK	OK	OK	OK	OK	OK	OK

BI Status and last ETL error for AUJDB\_BI\_TS1

	Sun 1/7/2018	Mon 2/7/2018	Tue 3/7/2018	Wed 4/7/2018	Thu 5/7/2018	Fri 6/7/2018	Sat 7/7/2018
<b>ABS DataWarehouse ETL Health</b>	OK	OK	OK	OK	OK	OK	OK
<b>ABS DWHStaging ETL Health</b>	OK	OK	OK	OK	OK	OK	OK

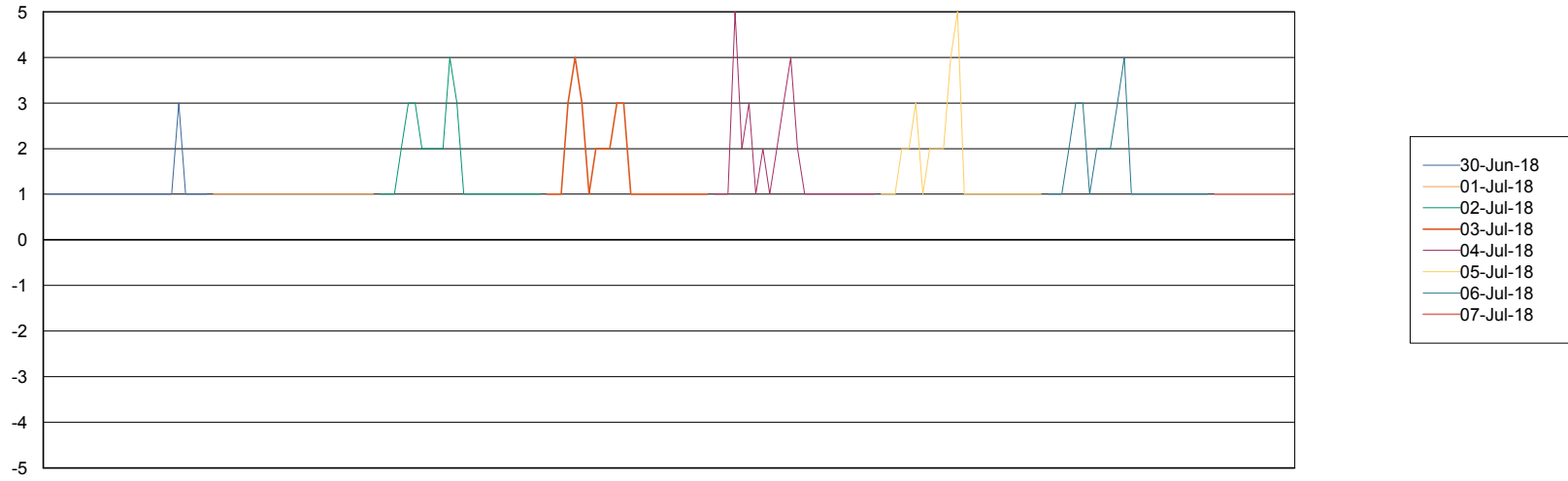
# Weekly SLA Customer Report

Customer AUJ\_Production  
Database ID 41



Standby Database Health AUJ\_Production

### Recovery lag for last 7 days



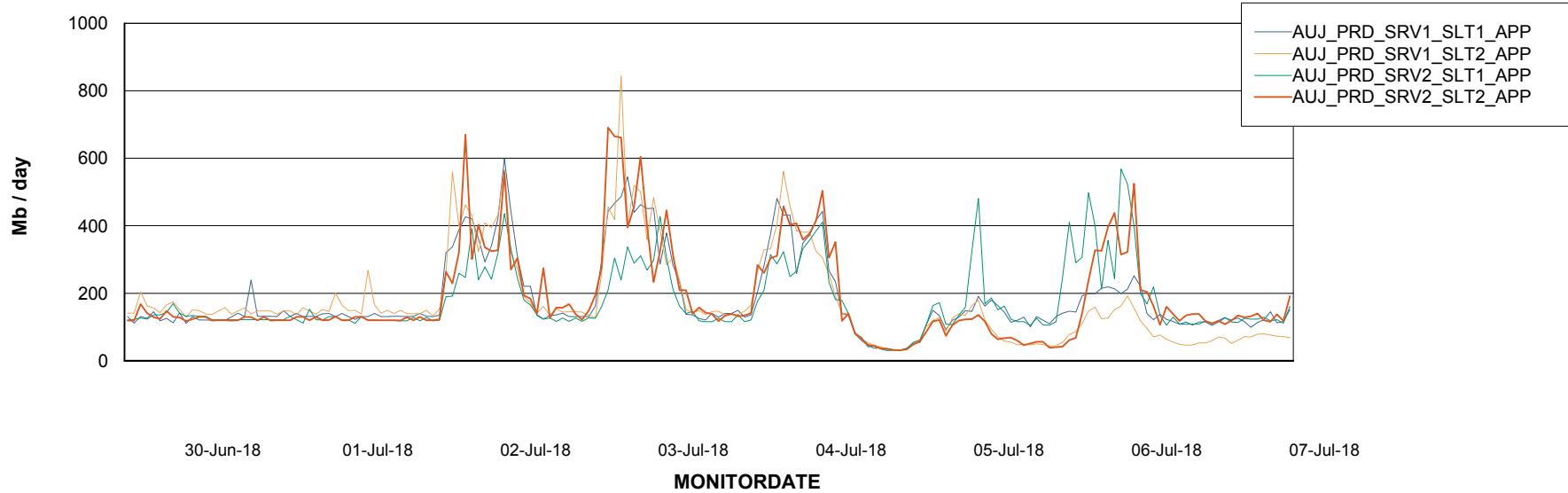
# Weekly SLA Customer Report

Customer AUJ\_Production  
Database ID 41

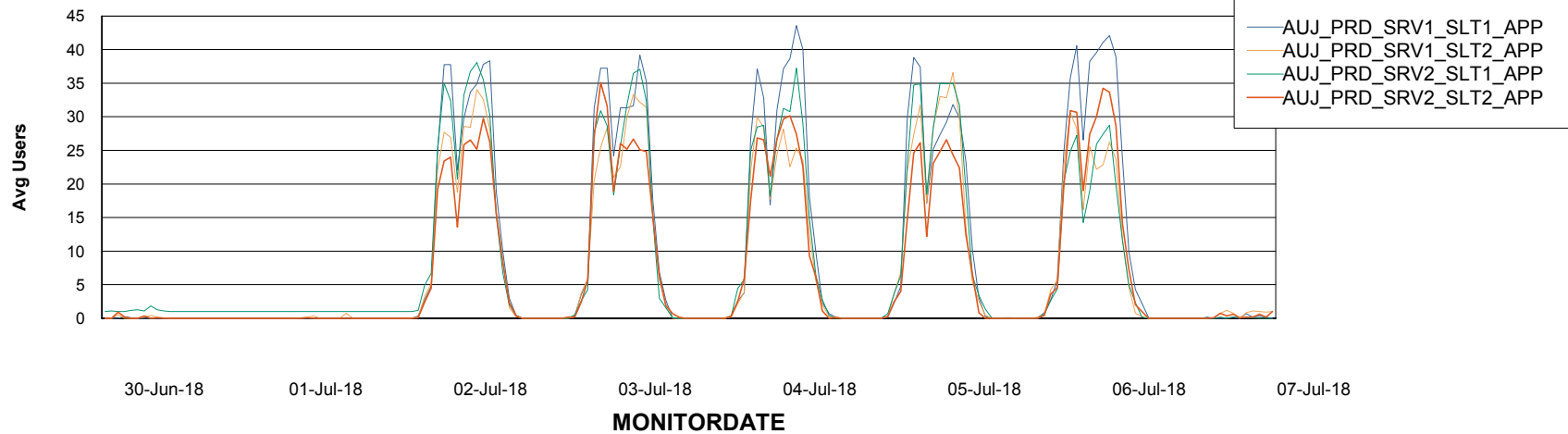


## ABSSolute Application Server Services

### Avg memory used per ABS Server Service



### Avg users per day per ABS server



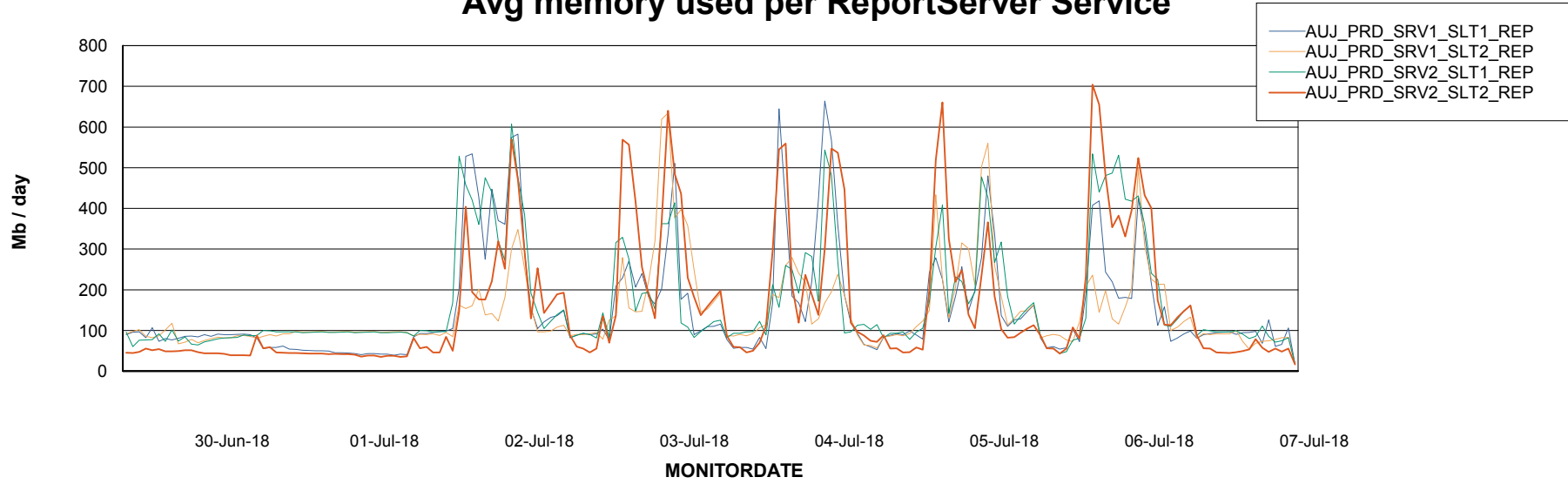
# Weekly SLA Customer Report

Customer AUJ\_Production  
Database ID 41



## ABSolute Application ReportServer Services

### Avg memory used per ReportServer Service



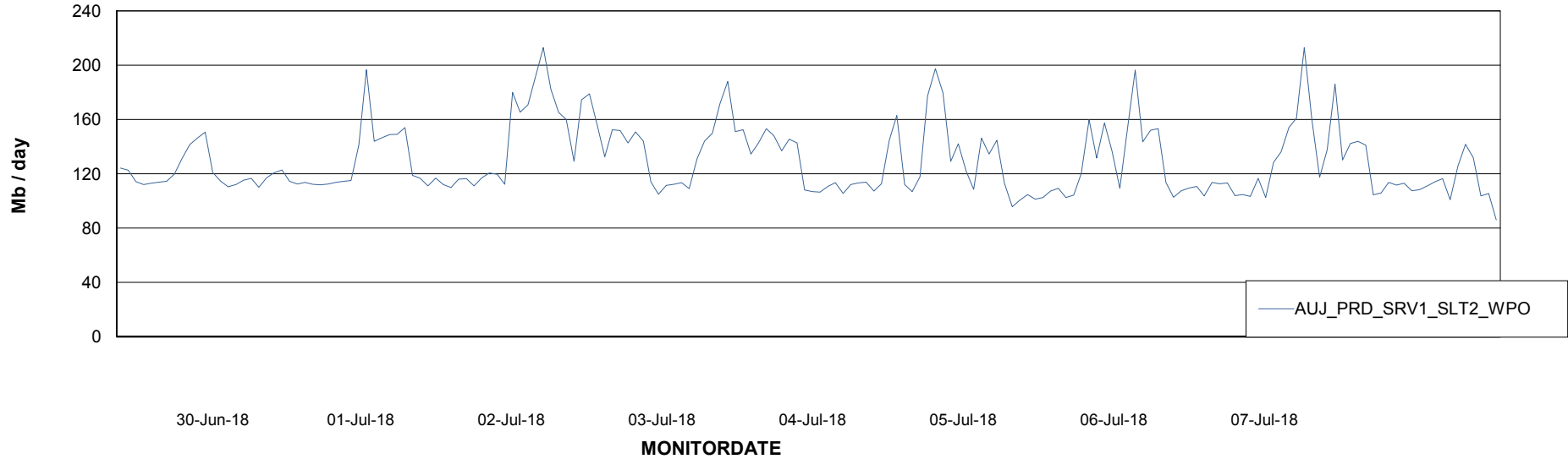
# Weekly SLA Customer Report

Customer AUJ\_Production  
Database ID 41



## ABSSolute Web Component Services

### Avg memory used per ABS Web component



# Weekly SLA Customer Report

Customer AUJ\_Production  
Database ID 41



## Disaster per ABS component

