

Weekly SLA Customer Report

Customer NIX_Production
Database ID 51



Harddisk Usage NIX_PRD_ABSAPP02

	Free disk space on c: (%)	Total disk space on c: (Gb)
21/04/2018	82	200
20/04/2018	82	200
19/04/2018	82	200
18/04/2018	81	200
17/04/2018	82	200
16/04/2018	82	200
15/04/2018	82	200

Harddisk Usage NIX_PRD_ABSAPP03

	Free disk space on c: (%)	Total disk space on c: (Gb)
21/04/2018	69	200
20/04/2018	69	200
19/04/2018	69	200
18/04/2018	69	200
17/04/2018	69	200
16/04/2018	69	200
15/04/2018	69	200

Weekly SLA Customer Report

Customer NIX_Production
Database ID 51



Harddisk Usage NIX_PRD_ABSWEB01

	Free disk space on c: (%)	Total disk space on c: (Gb)
21/04/2018	90	300
20/04/2018	90	300
19/04/2018	90	300
18/04/2018	90	300
17/04/2018	90	300
16/04/2018	90	300
15/04/2018	90	300

Harddisk Usage NIX_PRD_ORACLE_B11

	Free disk space on c: (%)	Total disk space on c: (Gb)	Free disk space on e: (%)	Total disk space on e: (Gb)	Free disk space on f: (%)	Total disk space on f: (Gb)	Free disk space on g: (%)	Total disk space on g: (Gb)
21/04/2018	40	279	57	558	35	279	60	558
20/04/2018	40	279	57	558	35	279	56	558
19/04/2018	39	279	57	558	35	279	57	558
18/04/2018	39	279	57	558	35	279	58	558
17/04/2018	39	279	57	558	35	279	59	558
16/04/2018	40	279	57	558	35	279	61	558
15/04/2018	41	279	57	558	35	279	62	558

Weekly SLA Customer Report

Customer NIX_Production
Database ID 51



Harddisk Usage NIX_PRD_ORCDB1

	Free disk space on c: (%)	Total disk space on c: (Gb)	Free disk space on e: (%)	Total disk space on e: (Gb)	Free disk space on f: (%)	Total disk space on f: (Gb)	Free disk space on g: (%)	Total disk space on g: (Gb)
21/04/2018	64	279	67	558	77	558	58	279
20/04/2018	64	279	67	558	76	558	58	279
19/04/2018	64	279	68	558	67	558	58	279
18/04/2018	64	279	68	558	68	558	58	279
17/04/2018	65	279	69	558	68	558	58	279
16/04/2018	65	279	69	558	69	558	58	279
15/04/2018	65	279	69	558	69	558	58	279

Harddisk Usage NIX_PRD_ORCDB2

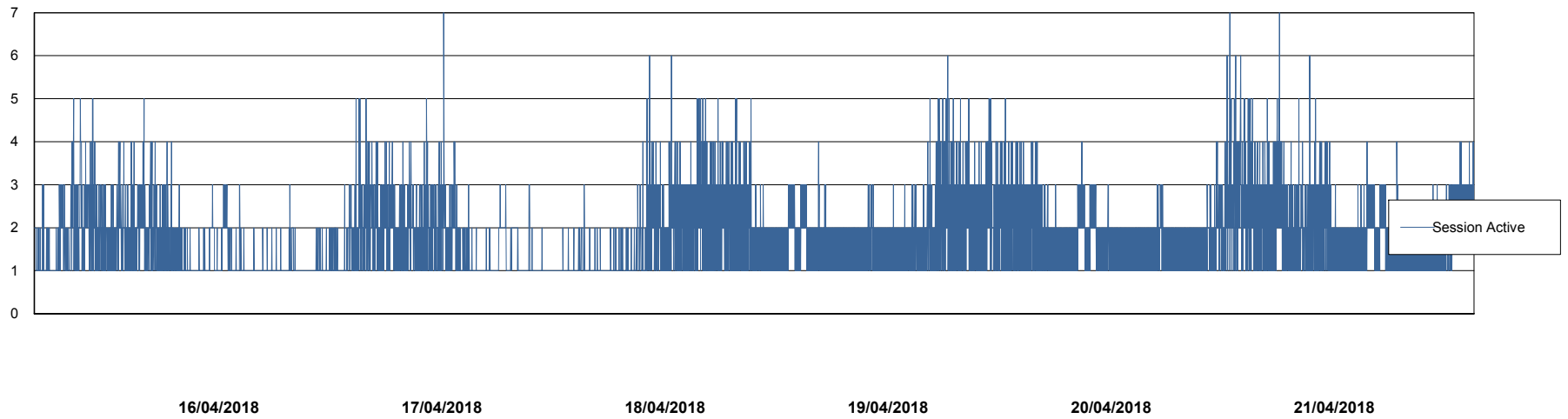
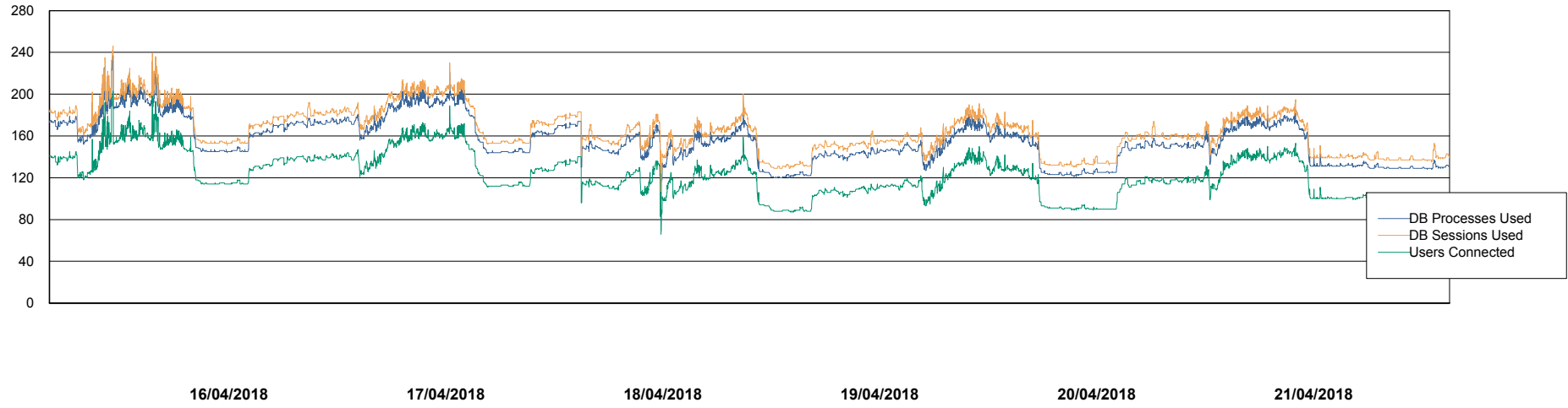
	Free disk space on c: (%)	Total disk space on c: (Gb)	Free disk space on e: (%)	Total disk space on e: (Gb)	Free disk space on f: (%)	Total disk space on f: (Gb)	Free disk space on g: (%)	Total disk space on g: (Gb)
21/04/2018	64	279	67	558	77	558	58	279
20/04/2018	64	279	67	558	76	558	58	279
19/04/2018	64	279	68	558	67	558	58	279
18/04/2018	64	279	68	558	68	558	58	279
17/04/2018	65	279	69	558	68	558	58	279
16/04/2018	65	279	69	558	69	558	58	279
15/04/2018	65	279	69	558	69	558	58	279

Weekly SLA Customer Report

Customer NIX_Production
Database ID 51



Database Performance NIXDB_Production

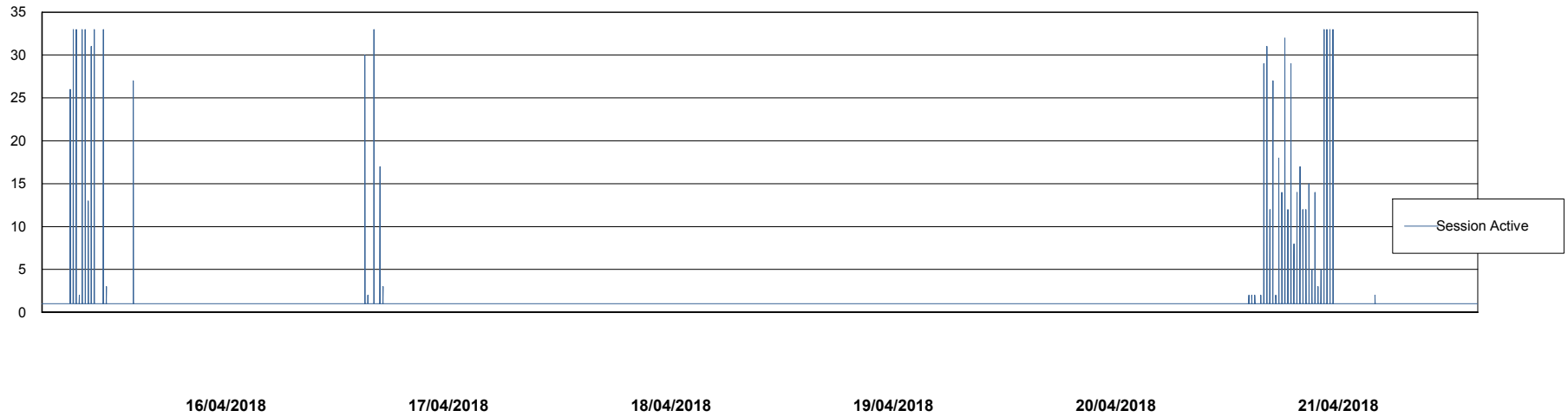
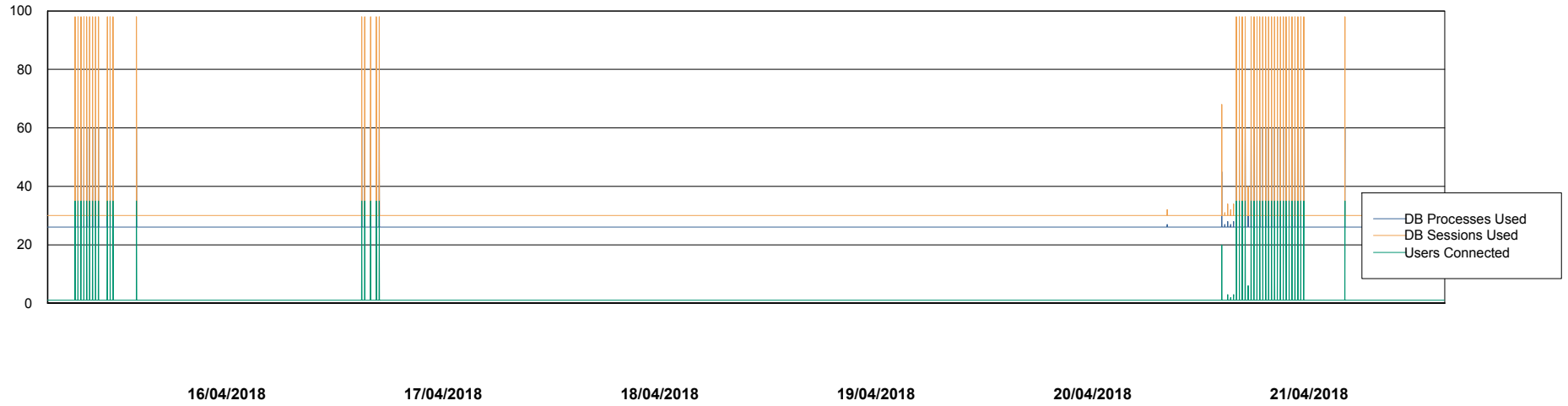


Weekly SLA Customer Report

Customer NIX_Production
Database ID 51



Database Performance NIXDB_Standby



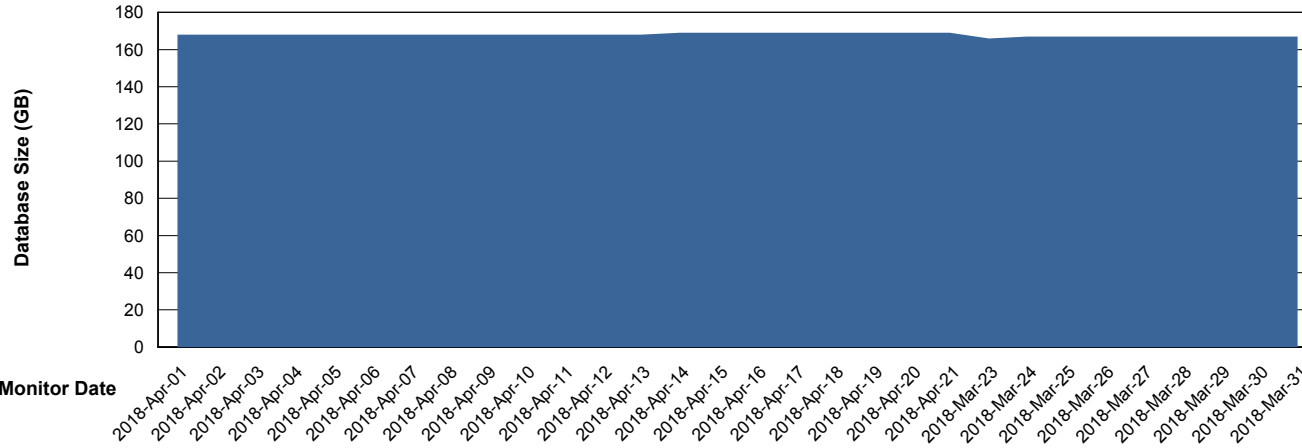
Weekly SLA Customer Report

Customer NIX_Production
 Database ID 51



DATABASE SIZE NIXDB_Production

Database growth over last month



Database Tablespace NIXDB_Production

Date	Tablespace Name	Filesize (Gb)	Usedsize (Gb)	Percentage free
21/04/2018	ABSDATA	68	58	15
	INDX	130	110	15
20/04/2018	ABSDATA	68	58	15
	INDX	130	110	15
19/04/2018	ABSDATA	68	58	15
	INDX	130	110	15
18/04/2018	ABSDATA	68	58	15
	INDX	130	110	15
17/04/2018	ABSDATA	68	58	15
	INDX	130	110	15
16/04/2018	ABSDATA	68	58	15
	INDX	130	110	15
15/04/2018	ABSDATA	68	58	15
	INDX	130	109	16

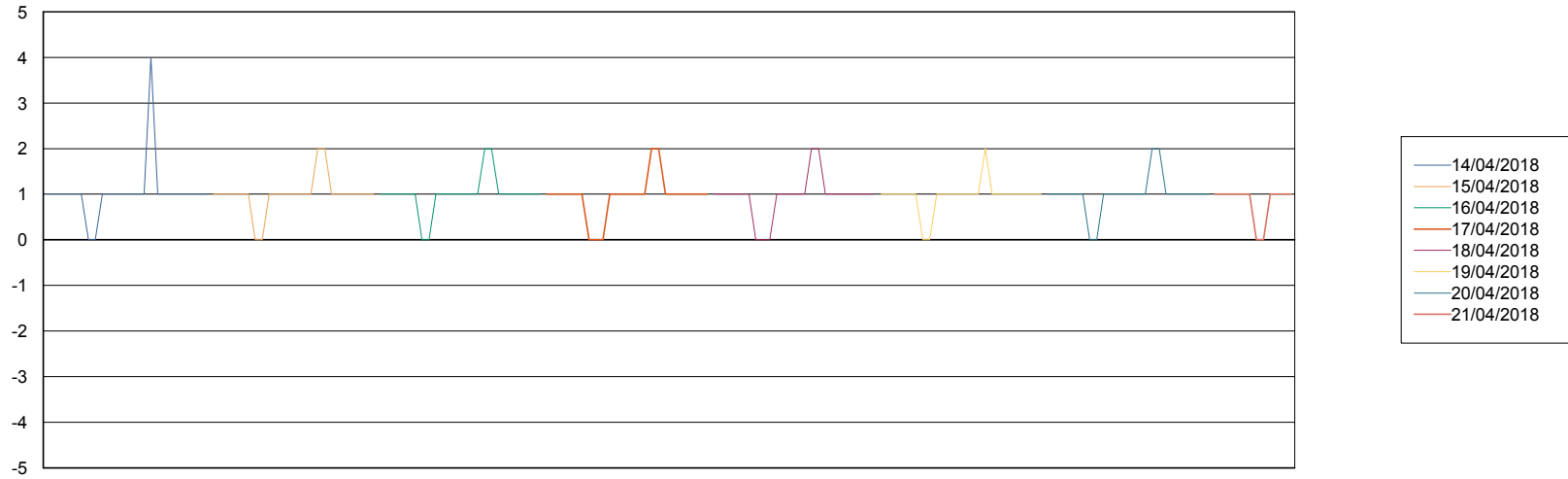
Weekly SLA Customer Report

Customer NIX_Production
Database ID 51



Standby Database Health NIX_Production

Recovery lag for last 7 days



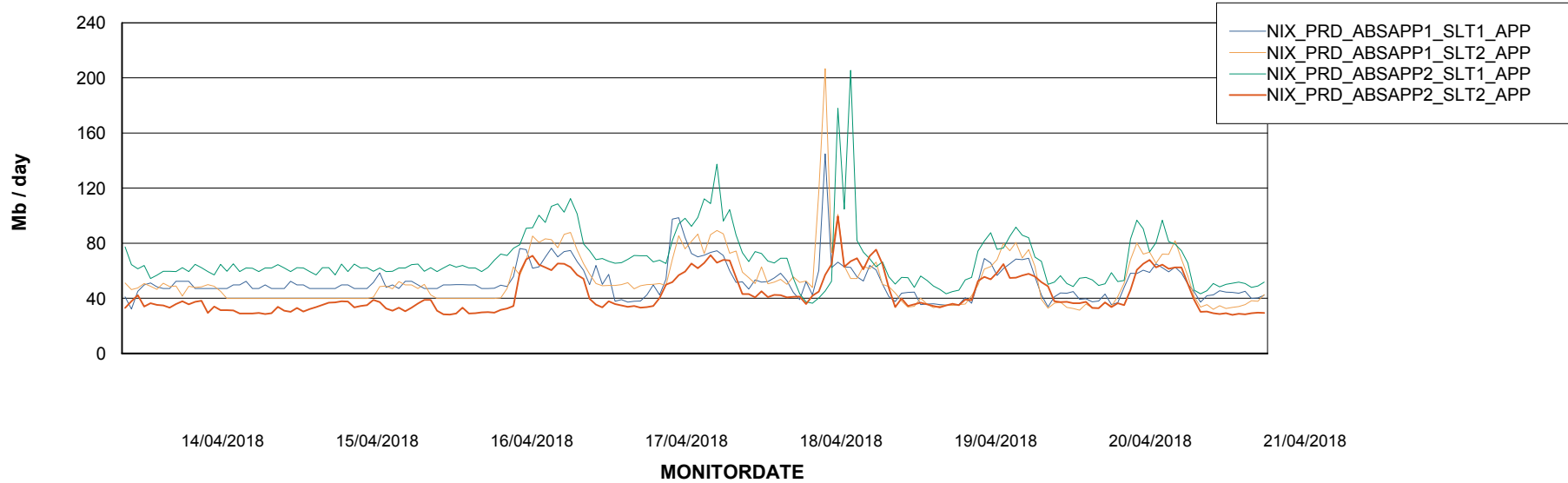
Weekly SLA Customer Report

Customer NIX_Production
Database ID 51

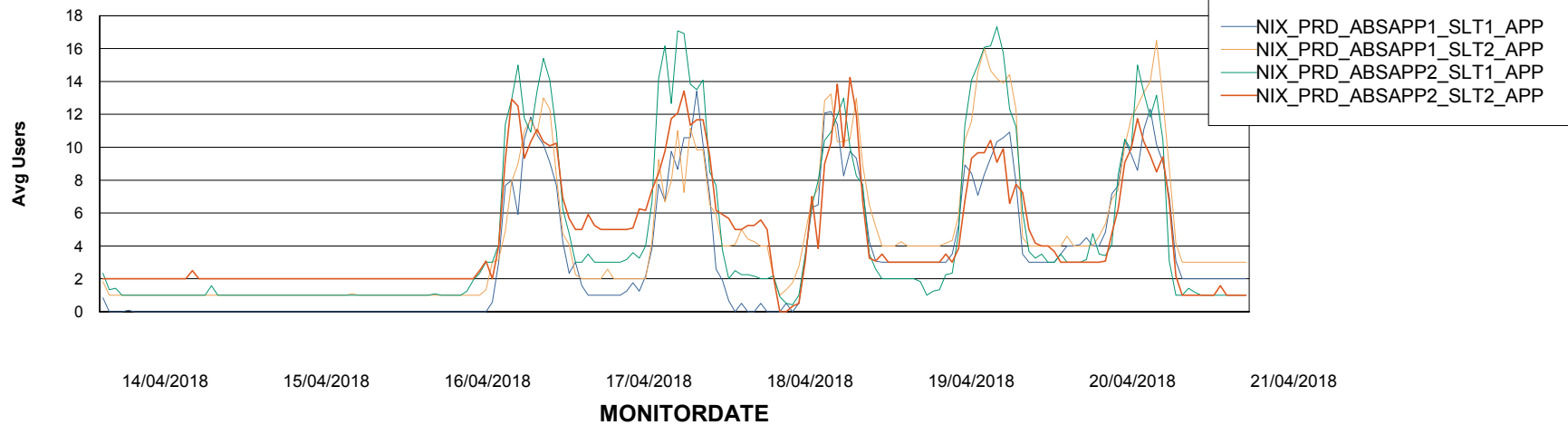


ABSSolute Application Server Services

Avg memory used per ABS Server Service



Avg users per day per ABS server



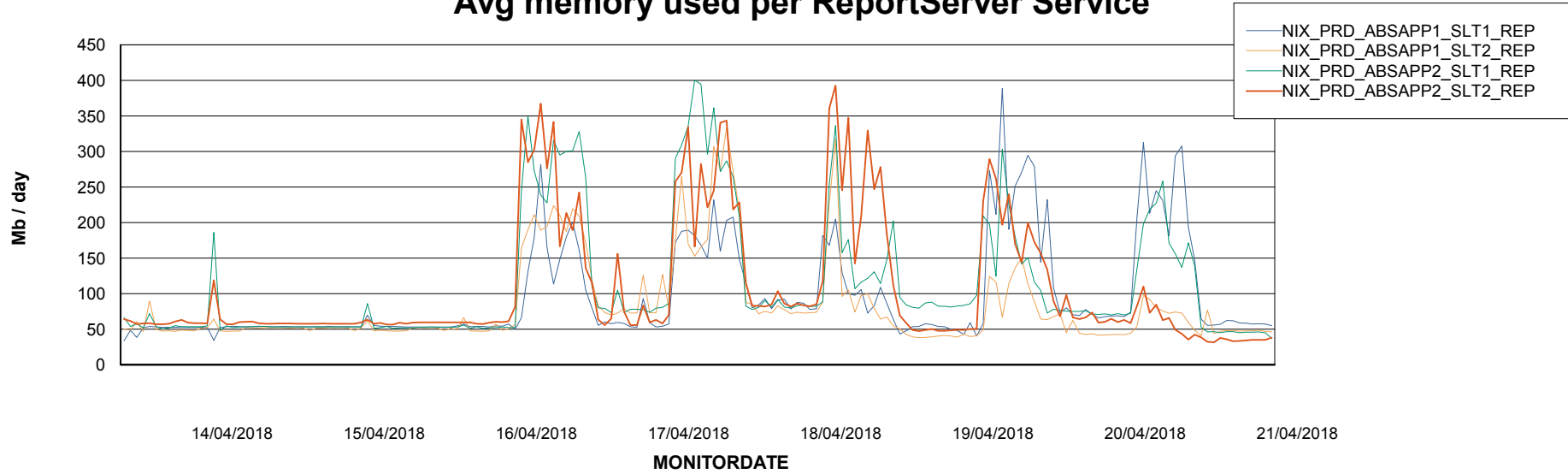
Weekly SLA Customer Report

Customer NIX_Production
Database ID 51



ABSSolute Application ReportServer Services

Avg memory used per ReportServer Service



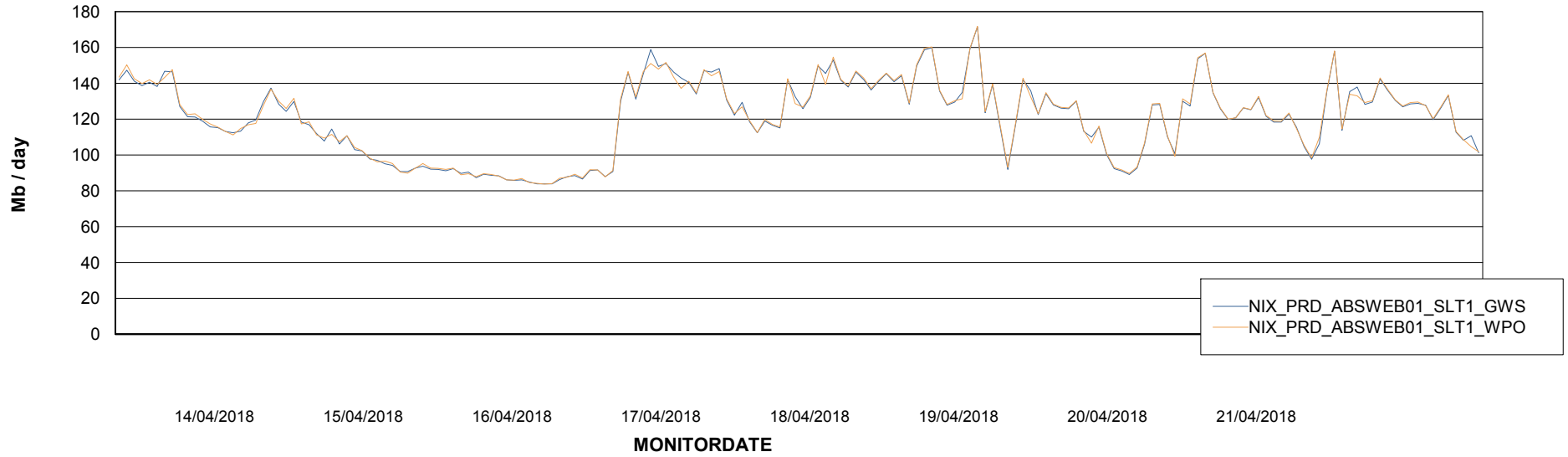
Weekly SLA Customer Report

Customer NIX_Production
Database ID 51



ABSSolute Web Component Services

Avg memory used per ABS Web component



Weekly SLA Customer Report

Customer NIX_Production
Database ID 51



Disaster per ABS component

