

# Weekly SLA Customer Report

Customer PHS\_Production  
Database ID 47



Harddisk Usage PHS\_BI\_GCAB779a

	Free disk space on c: (%)	Total disk space on c: (Gb)	Free disk space on d: (%)	Total disk space on d: (Gb)
24/02/2018	19	150	34	200
23/02/2018	19	150	34	200
22/02/2018	19	150	34	200
21/02/2018	19	150	34	200
20/02/2018	19	150	34	200
19/02/2018	19	150	34	200
18/02/2018	19	150	34	200

Harddisk Usage PHS\_PRDWEB\_DCAB573b

	Free disk space on c: (%)	Total disk space on c: (Gb)
24/02/2018	82	100
23/02/2018	82	100
22/02/2018	82	100
21/02/2018	82	100
20/02/2018	82	100
19/02/2018	82	100
18/02/2018	82	100

# Weekly SLA Customer Report

Customer PHS\_Production  
Database ID 47



Harddisk Usage PHS\_PRD\_GCAB574b

	Free disk space on c: (%)	Total disk space on c: (Gb)	Free disk space on d: (%)	Total disk space on d: (Gb)	Free disk space on f: (%)	Total disk space on f: (Gb)
24/02/2018	75	150	38	300	47	200
23/02/2018	75	150	38	300	50	200
22/02/2018	75	150	38	300	50	200
21/02/2018	75	150	38	300	50	200
20/02/2018	75	150	38	300	50	200
19/02/2018	75	150	39	300	49	200
18/02/2018	75	150	39	300	51	200

Harddisk Usage PHS\_PRD\_GCAB576b

	Free disk space on c: (%)	Total disk space on c: (Gb)	Free disk space on d: (%)	Total disk space on d: (Gb)	Free disk space on f: (%)	Total disk space on f: (Gb)
24/02/2018	78	150	41	300	80	100
23/02/2018	78	150	41	300	80	100
22/02/2018	78	150	41	300	80	100
21/02/2018	78	150	41	300	80	100
20/02/2018	78	150	41	300	80	100
19/02/2018	78	150	41	300	77	100
18/02/2018	78	150	41	300	80	100

# Weekly SLA Customer Report

Customer PHS\_Production  
Database ID 47



Harddisk Usage PHS\_TST\_GCAB575b

	Free disk space on c: (%)	Total disk space on c: (Gb)	Free disk space on d: (%)	Total disk space on d: (Gb)
24/02/2018	16	50	35	300
23/02/2018	16	50	35	300
22/02/2018	16	50	35	300
21/02/2018	16	50	35	300
20/02/2018	16	50	35	300
19/02/2018	16	50	35	300
18/02/2018	16	50	35	300

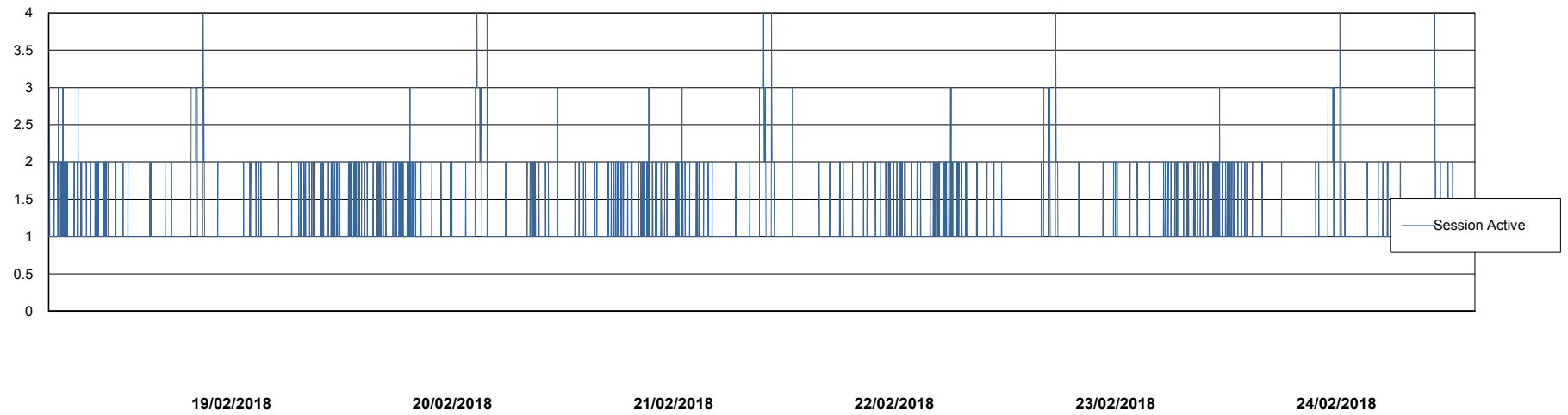
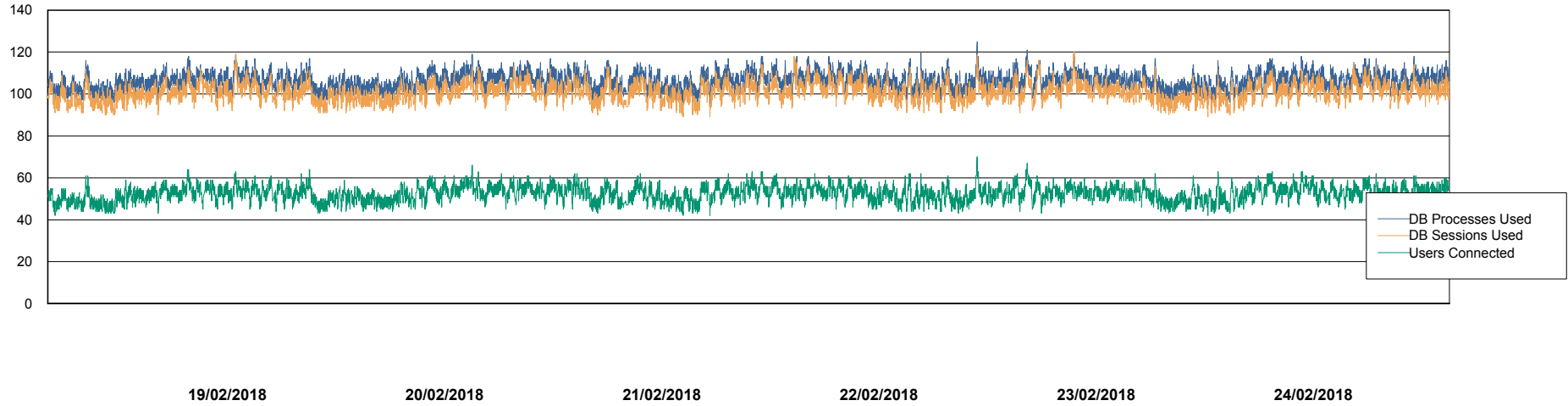
# Weekly SLA Customer Report

Customer PHS\_Production  
Database ID 47



## Database Performance PHSDB\_Production

DB Processes Max 500  
DB Sessions Max 772



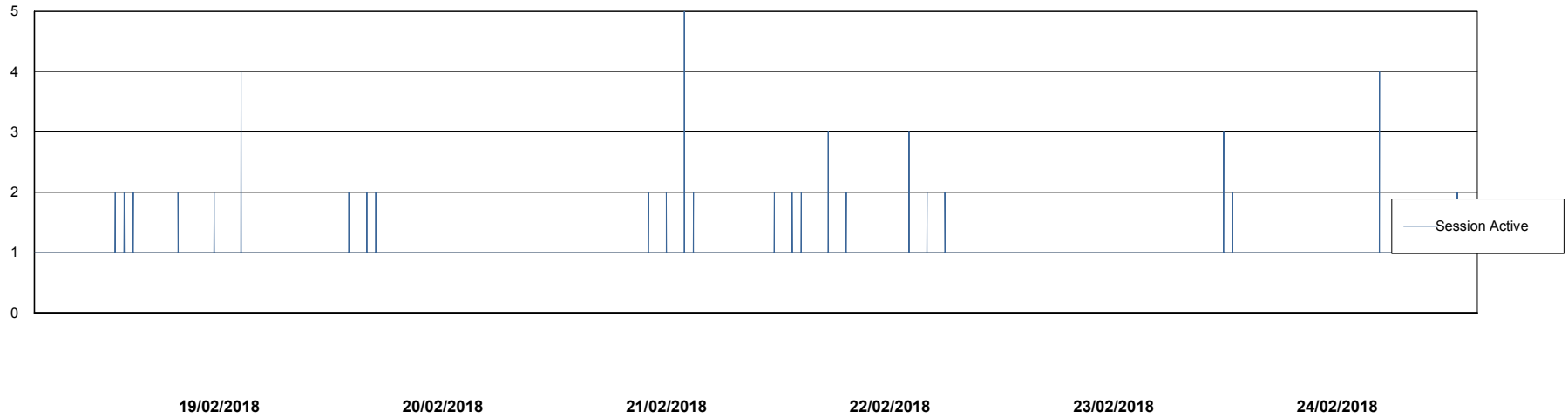
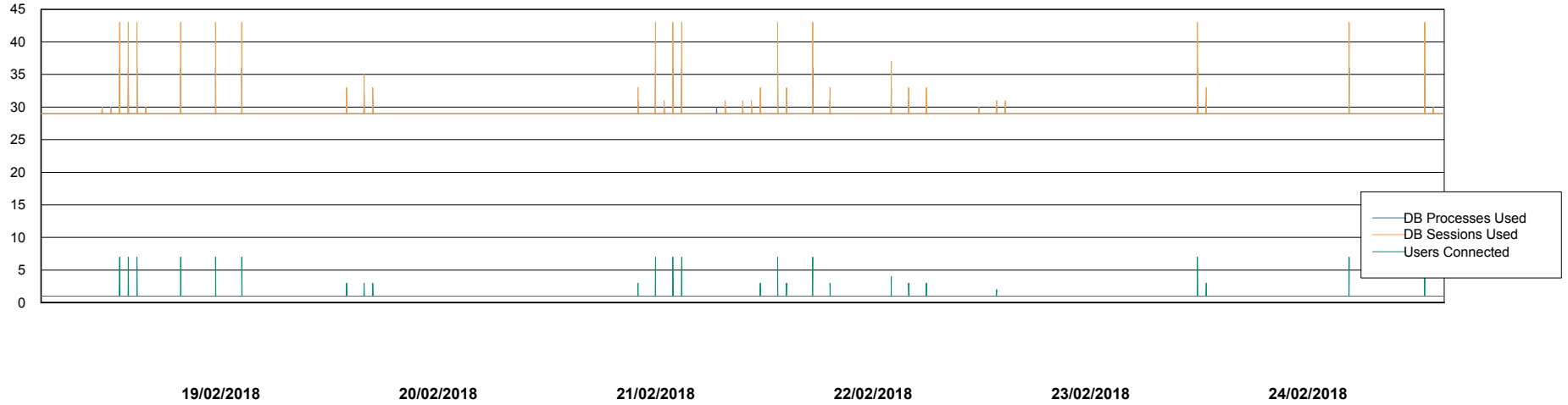
# Weekly SLA Customer Report

Customer PHS\_Production  
Database ID 47



## Database Performance PHSDB\_Standby

DB Processes Max 500  
DB Sessions Max 772



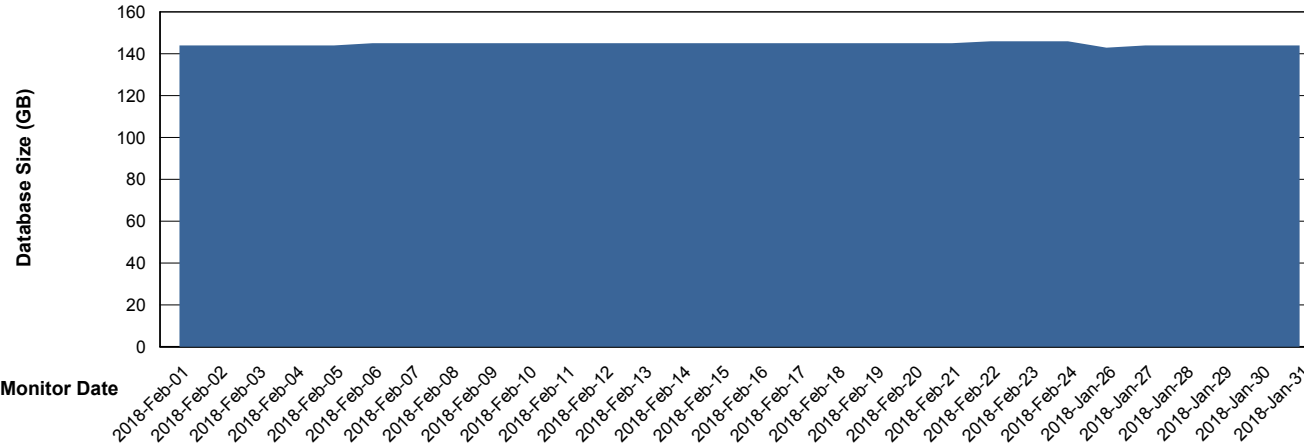
# Weekly SLA Customer Report

Customer PHS\_Production  
 Database ID 47



DATABASE SIZE PHSDB\_Production

Database growth over last month



Database Tablespace PHSDB\_Production

Date	Tablespace Name	Filesize (Gb)	Usedsize (Gb)	Percentage free
24/02/2018	ABSDATA	2	139	12
	INDX	2	4	33
23/02/2018	ABSDATA	2	139	12
	INDX	2	4	33
22/02/2018	ABSDATA	2	139	12
	INDX	2	4	33
21/02/2018	ABSDATA	2	139	12
	INDX	2	4	33
20/02/2018	ABSDATA	2	139	12
	INDX	2	4	33
19/02/2018	ABSDATA	2	138	13
	INDX	2	4	33
18/02/2018	ABSDATA	2	138	13
	INDX	2	4	33

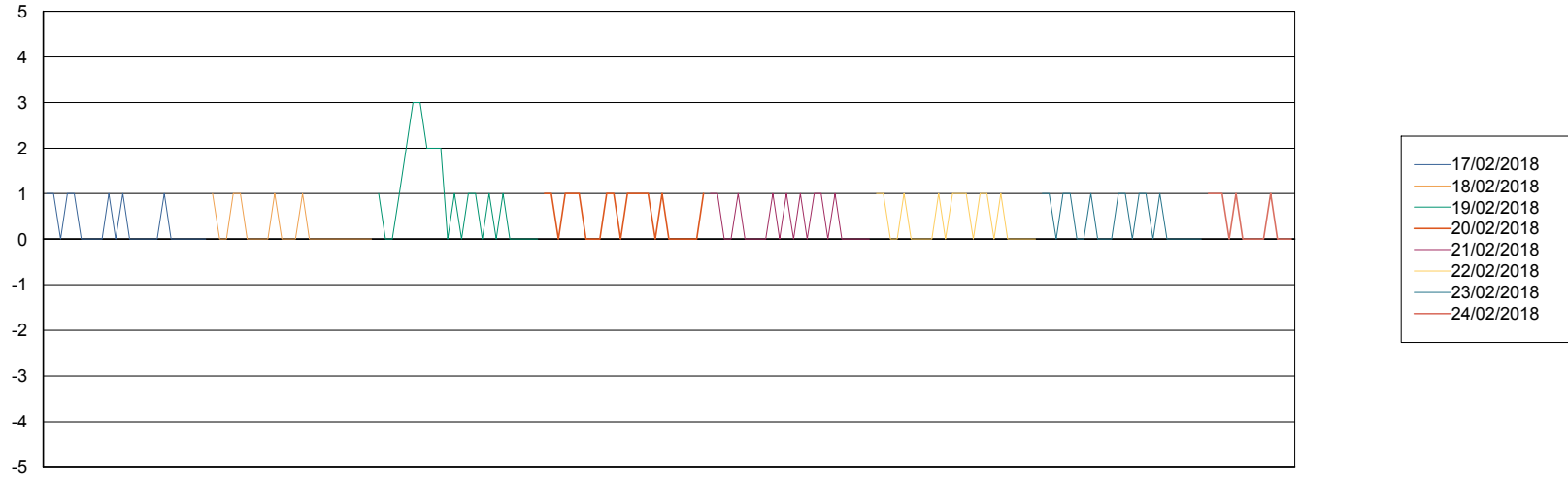
# Weekly SLA Customer Report

Customer PHS\_Production  
Database ID 47



Standby Database Health PHS\_Production

## Recovery lag for last 7 days



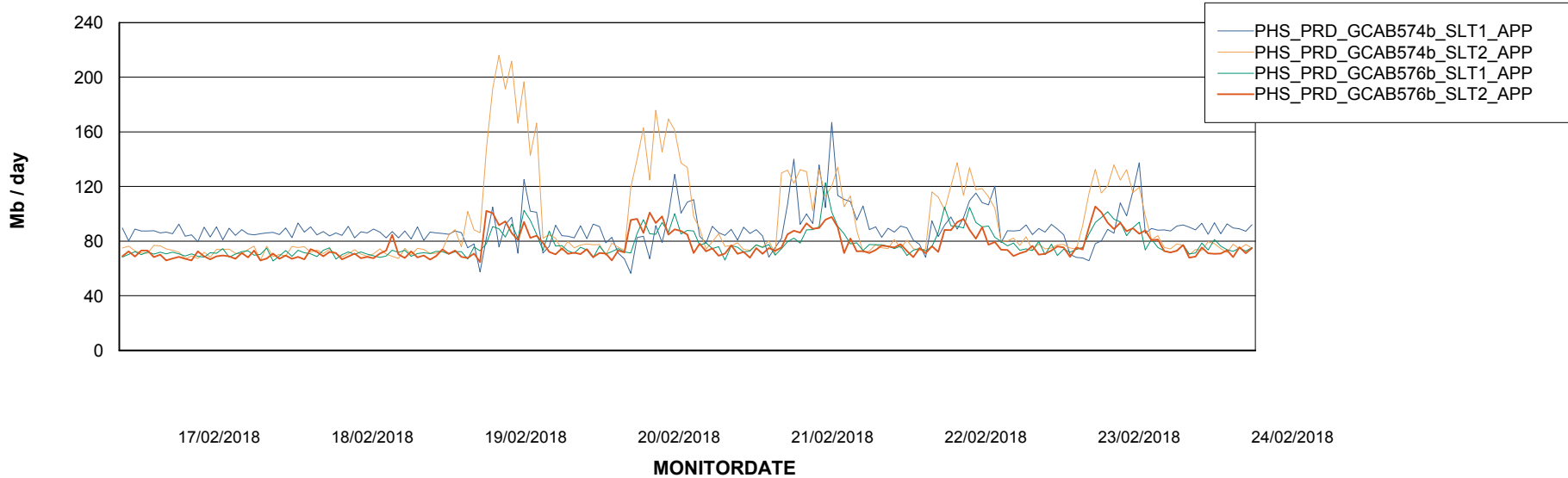
# Weekly SLA Customer Report

Customer PHS\_Production  
Database ID 47

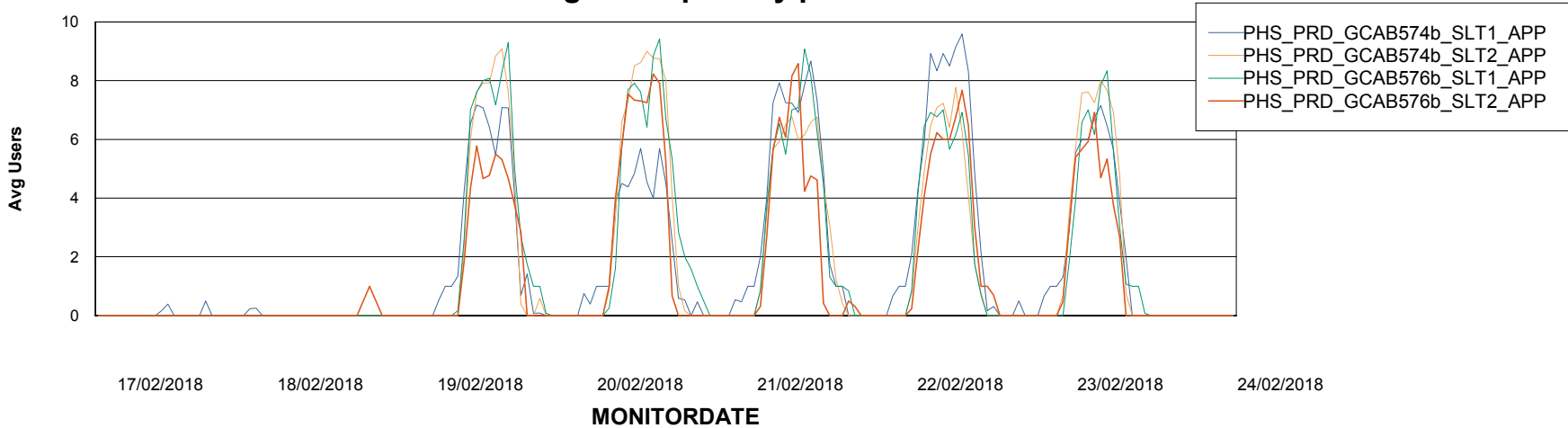


## ABSolute Application Server Services

### Avg memory used per ABS Server Service



### Avg users per day per ABS server



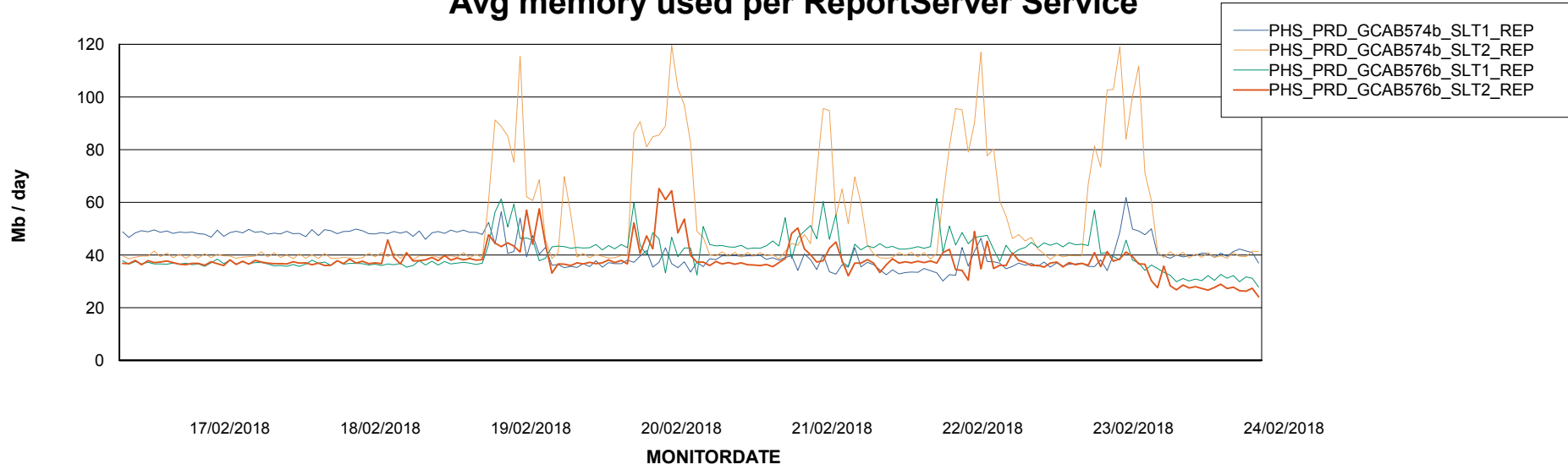
# Weekly SLA Customer Report

Customer PHS\_Production  
Database ID 47



## ABSSolute Application ReportServer Services

### Avg memory used per ReportServer Service



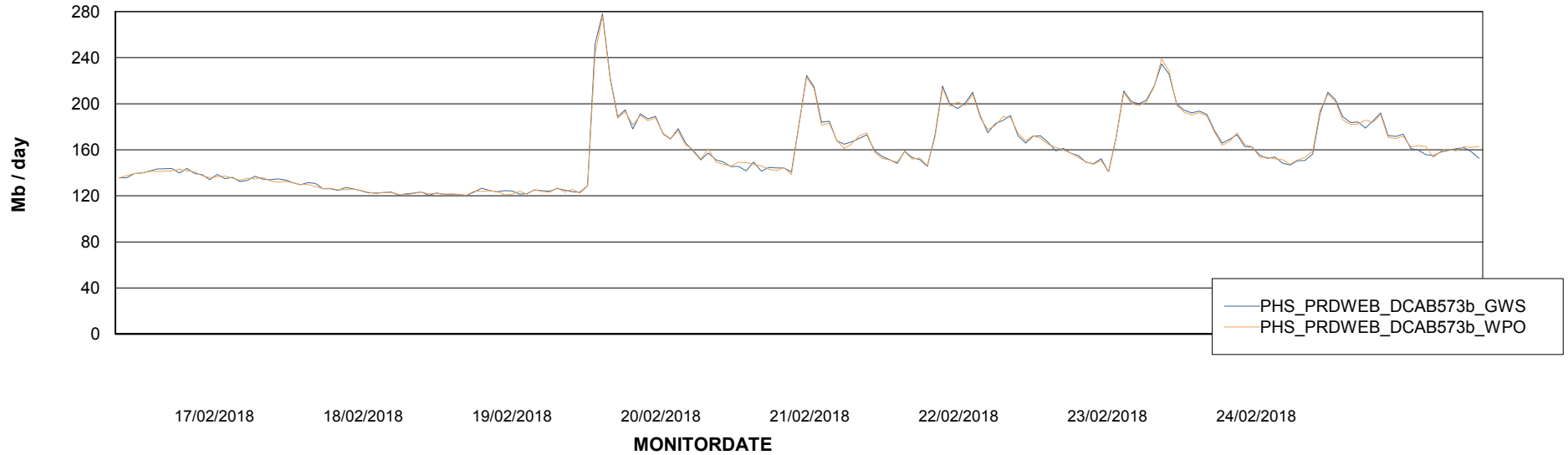
# Weekly SLA Customer Report

Customer PHS\_Production  
Database ID 47



## ABSSolute Web Component Services

### Avg memory used per ABS Web component



# Weekly SLA Customer Report

Customer PHS\_Production  
Database ID 47



## Disaster per ABS component

