

# Weekly SLA Customer Report

Customer PHS\_Production  
Database ID 47



## Harddisk Usage PHS\_BI\_GCAB779a

	Free disk space on c: (%)	Total disk space on c: (Gb)	Free disk space on d: (%)	Total disk space on d: (Gb)
02/12/2017	15	150	16	150
01/12/2017	15	150	16	150
30/11/2017	15	150	16	150
29/11/2017	15	150	16	150
28/11/2017	15	150	16	150
27/11/2017	15	150	16	150
26/11/2017	15	150	16	150

## Harddisk Usage PHS\_PRDWEB\_DCAB573b

	Free disk space on c: (%)	Total disk space on c: (Gb)
02/12/2017	83	100
01/12/2017	83	100
30/11/2017	83	100
29/11/2017	83	100
28/11/2017	83	100
27/11/2017	83	100
26/11/2017	83	100

# Weekly SLA Customer Report

Customer PHS\_Production  
Database ID 47



Harddisk Usage PHS\_PRD\_GCAB574b

	Free disk space on c: (%)	Total disk space on c: (Gb)	Free disk space on d: (%)	Total disk space on d: (Gb)	Free disk space on f: (%)	Total disk space on f: (Gb)
02/12/2017	76	150	41	300	48	200
01/12/2017	76	150	41	300	51	200
30/11/2017	76	150	41	300	51	200
29/11/2017	76	150	41	300	51	200
28/11/2017	76	150	41	300	51	200
27/11/2017	76	150	41	300	50	200
26/11/2017	76	150	41	300	52	200

Harddisk Usage PHS\_PRD\_GCAB576b

	Free disk space on c: (%)	Total disk space on c: (Gb)	Free disk space on d: (%)	Total disk space on d: (Gb)	Free disk space on f: (%)	Total disk space on f: (Gb)
02/12/2017	78	150	43	300	79	100
01/12/2017	78	150	43	300	79	100
30/11/2017	78	150	43	300	79	100
29/11/2017	78	150	43	300	79	100
28/11/2017	78	150	43	300	79	100
27/11/2017	78	150	43	300	76	100
26/11/2017	78	150	43	300	79	100

## Weekly SLA Customer Report

Customer PHS\_Production  
Database ID 47



Harddisk Usage PHS\_TST\_GCAB575b

	Free disk space on c: (%)	Total disk space on c: (Gb)	Free disk space on d: (%)	Total disk space on d: (Gb)
02/12/2017	15	50	35	300
01/12/2017	15	50	35	300
30/11/2017	15	50	35	300
29/11/2017	15	50	35	300
28/11/2017	15	50	35	300
27/11/2017	15	50	35	300
26/11/2017	15	50	35	300

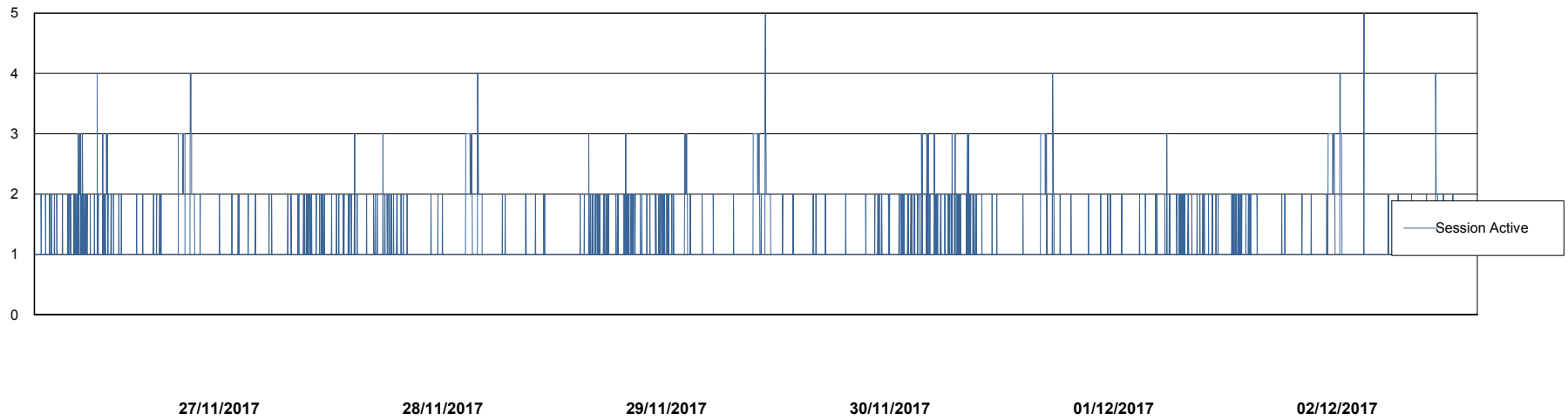
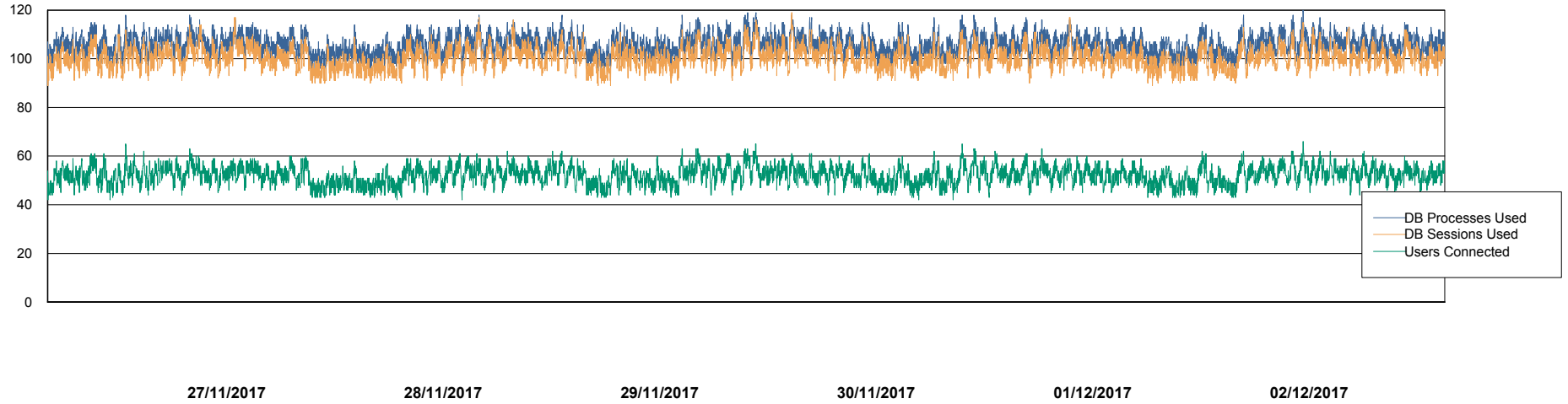
# Weekly SLA Customer Report

Customer PHS\_Production  
Database ID 47



## Database Performance PHSDB\_Production

DB Processes Max 500  
DB Sessions Max 772



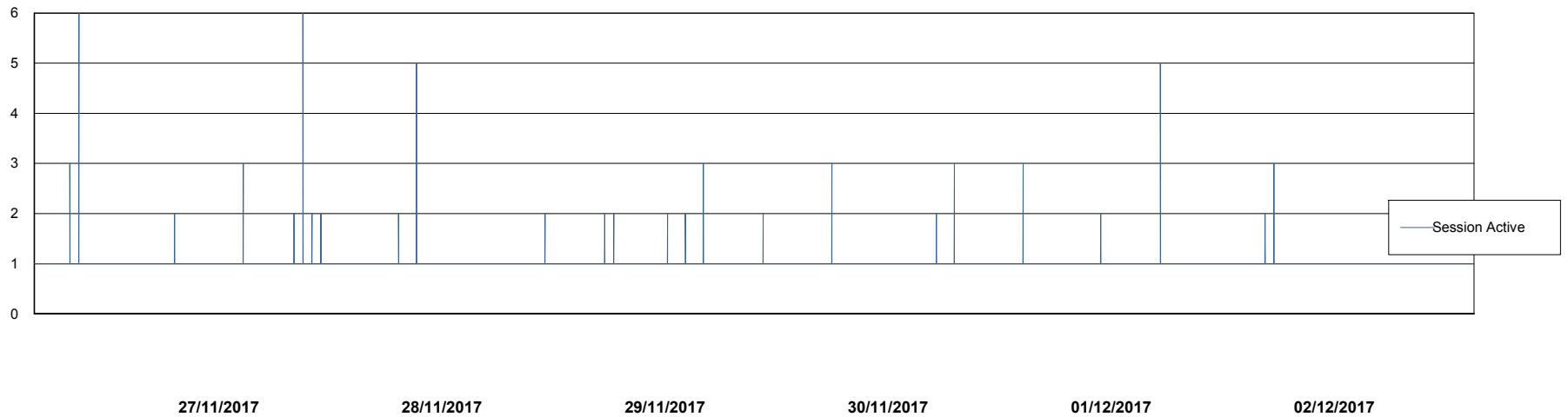
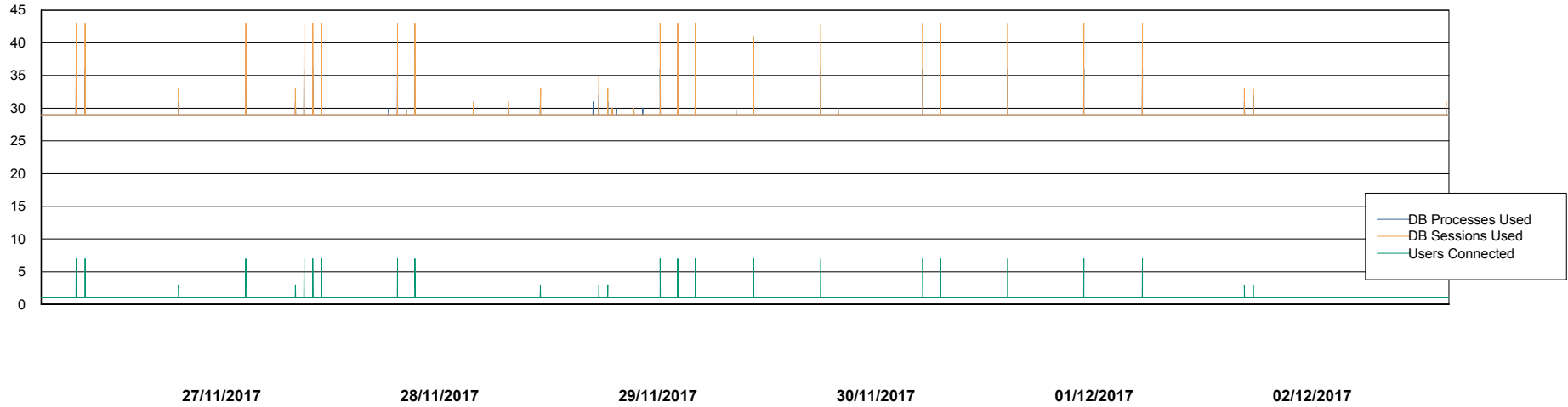
# Weekly SLA Customer Report

Customer PHS\_Production  
Database ID 47



## Database Performance PHSDB\_Standby

DB Processes Max 500  
DB Sessions Max 772



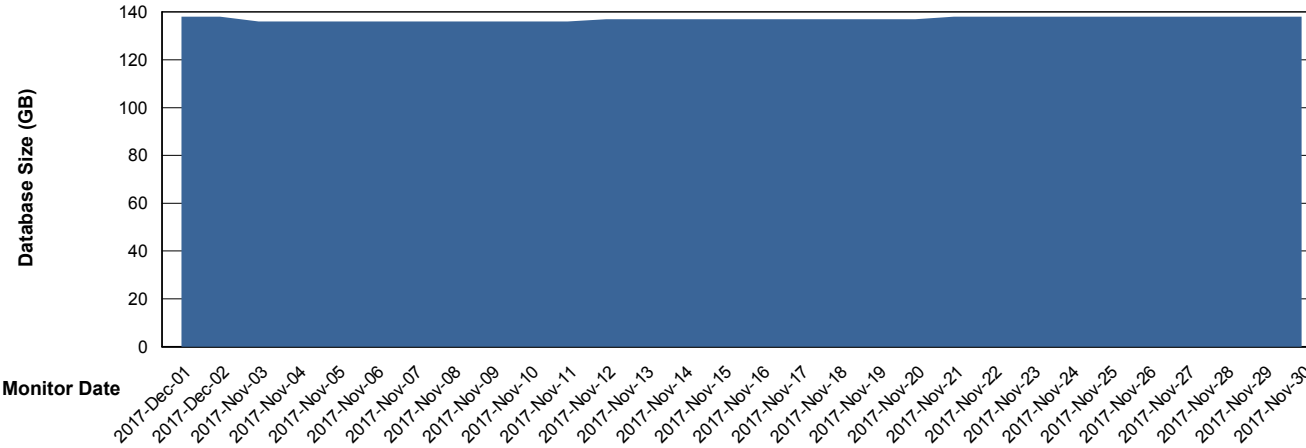
# Weekly SLA Customer Report

Customer PHS\_Production  
 Database ID 47



DATABASE SIZE PHSDB\_Production

## Database growth over last month



Database Tablespace PHSDB\_Production

Date	Tablespace Name	Filesize (Gb)	Usedsize (Gb)	Percentage free
02/12/2017	ABSDATA	2	132	14
	INDX	2	3	50
01/12/2017	ABSDATA	2	132	14
	INDX	2	3	50
30/11/2017	ABSDATA	2	132	14
	INDX	2	3	50
29/11/2017	ABSDATA	2	131	14
	INDX	2	3	50
28/11/2017	ABSDATA	2	131	14
	INDX	2	3	50
27/11/2017	ABSDATA	2	131	14
	INDX	2	3	50
26/11/2017	ABSDATA	2	130	15
	INDX	2	3	50

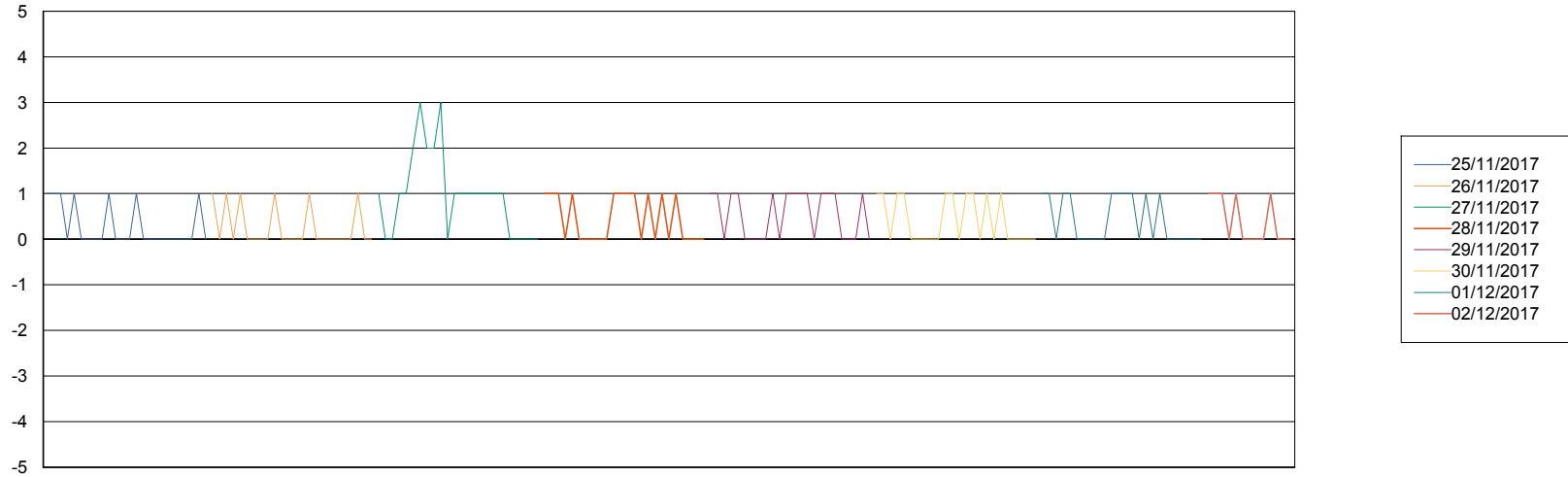
# Weekly SLA Customer Report

Customer PHS\_Production  
Database ID 47



Standby Database Health PHS\_Production

## Recovery lag for last 7 days



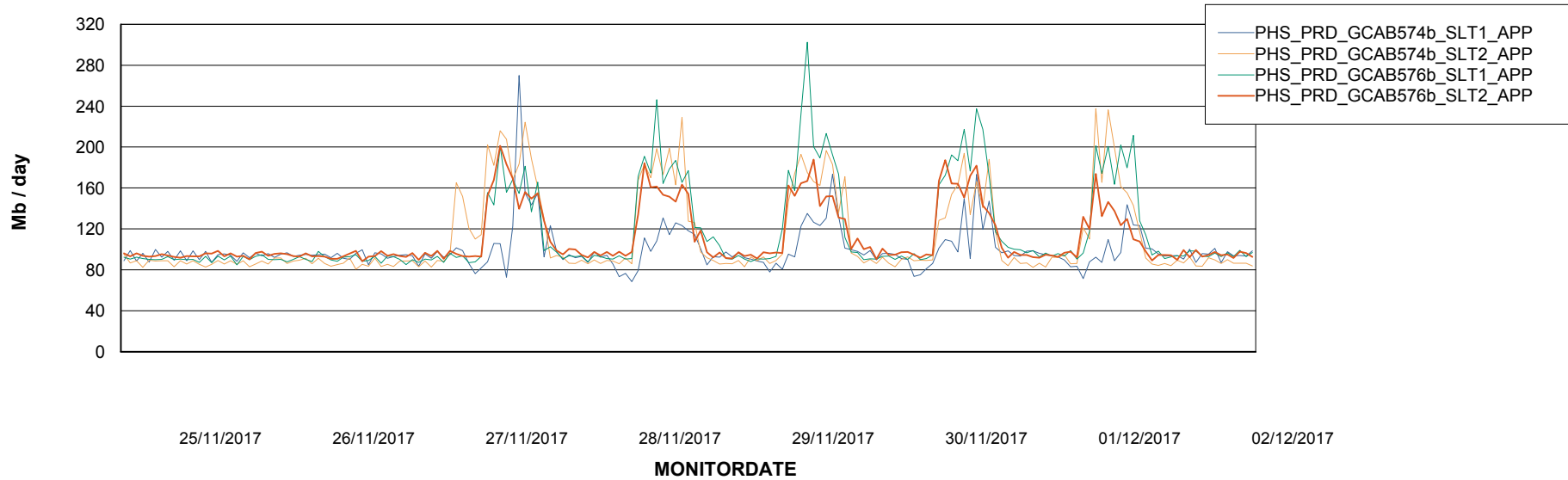
# Weekly SLA Customer Report

Customer PHS\_Production  
Database ID 47

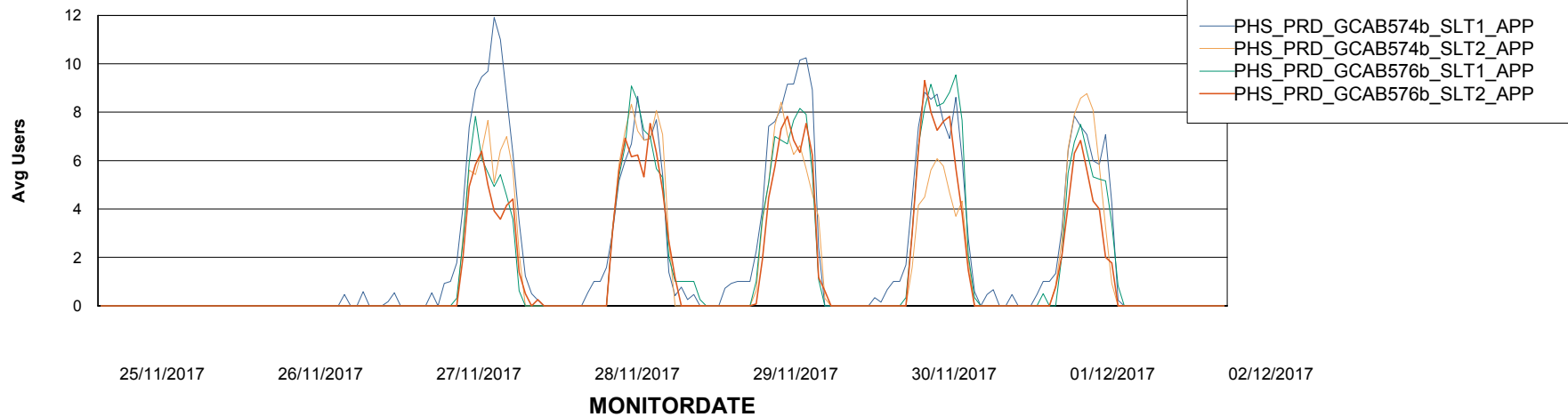


## ABSSolute Application Server Services

### Avg memory used per ABS Server Service



### Avg users per day per ABS server



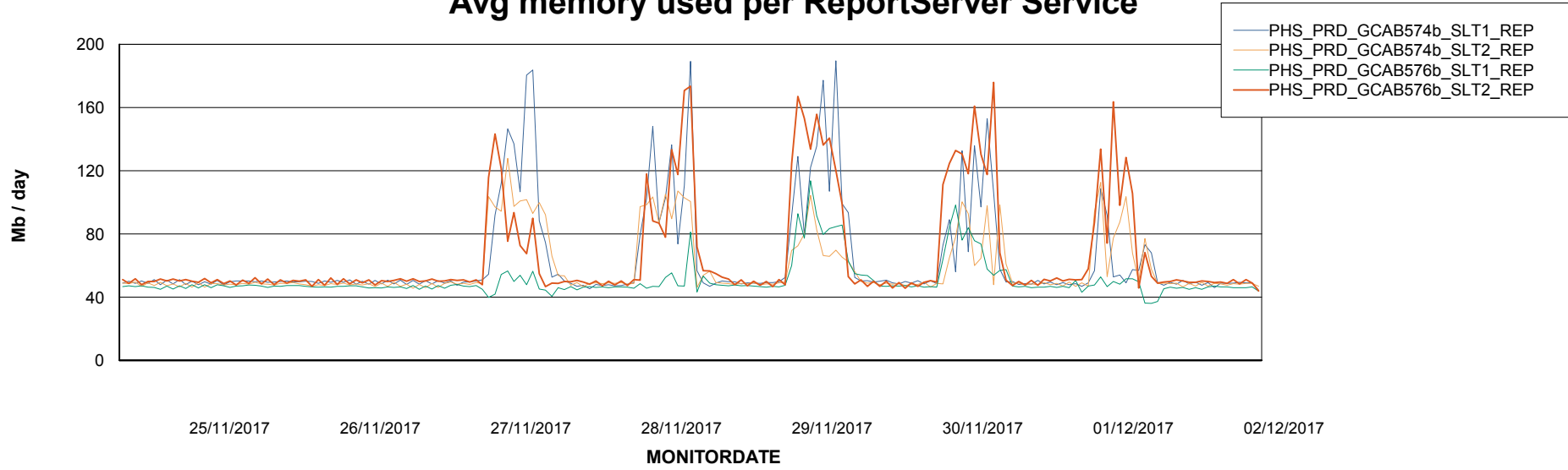
# Weekly SLA Customer Report

Customer PHS\_Production  
Database ID 47



## ABSSolute Application ReportServer Services

### Avg memory used per ReportServer Service



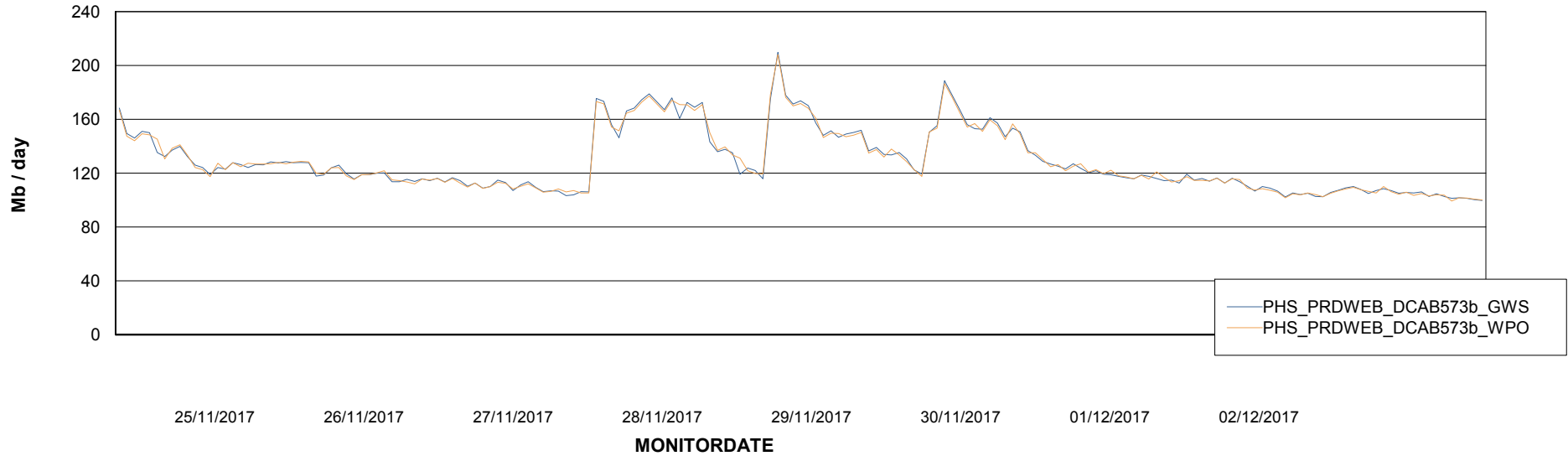
# Weekly SLA Customer Report

Customer PHS\_Production  
Database ID 47



## ABSSolute Web Component Services

### Avg memory used per ABS Web component



# Weekly SLA Customer Report

Customer PHS\_Production  
Database ID 47



## Disaster per ABS component

