

# Weekly SLA Customer Report

Customer BGG\_Production  
Database ID 58



## Harddisk Usage BGG\_PRD\_BI

	Free disk space on / (%)	Total disk space on / (Gb)	Used disk space on / (Gb)	Free disk space on /home (%)
11-11-2017	25	1	1	40
10-11-2017	25	1	1	40
9-11-2017	25	1	1	40
8-11-2017	25	1	1	41
7-11-2017	25	1	1	41
6-11-2017	25	1	1	41
5-11-2017	25	1	1	42

## Harddisk Usage BGG\_PRD\_DB1

	Free disk space on / (%)	Total disk space on / (Gb)	Used disk space on / (Gb)	Free disk space on /home (%)
11-11-2017	16	1	1	56
10-11-2017	16	1	1	56
9-11-2017	16	1	1	56
8-11-2017	16	1	1	56
7-11-2017	16	1	1	56
6-11-2017	16	1	1	56
5-11-2017	16	1	1	56

# Weekly SLA Customer Report

Customer BGG\_Production  
Database ID 58



## Harddisk Usage BGG\_PRD\_SRV1

	Free disk space on / (%)	Total disk space on / (Gb)	Used disk space on / (Gb)	Free disk space on /home (%)
11-11-2017	23	1	1	92
10-11-2017	23	1	1	92
9-11-2017	23	1	1	92
8-11-2017	23	1	1	92
7-11-2017	23	1	1	93
6-11-2017	23	1	1	94
5-11-2017	23	1	1	94

## Harddisk Usage BGG\_PRD\_SRV2

	Free disk space on / (%)	Total disk space on / (Gb)	Used disk space on / (Gb)	Free disk space on /home (%)
11-11-2017	27	1	1	97
10-11-2017	27	1	1	97
9-11-2017	27	1	1	97
8-11-2017	27	1	1	97
7-11-2017	27	1	1	98
6-11-2017	27	1	1	98
5-11-2017	27	1	1	98

# Weekly SLA Customer Report

Customer BGG\_Production  
Database ID 58



## Harddisk Usage BGG\_PRD\_SRV3

	Free disk space on / (%)	Total disk space on / (Gb)	Used disk space on / (Gb)	Free disk space on /home (%)
11-11-2017	26	1	1	98
10-11-2017	27	1	1	98
9-11-2017	16	1	1	98
8-11-2017	13	1	1	98
7-11-2017	17	1	1	98
6-11-2017	20	1	1	98
5-11-2017	24	1	1	98

## Harddisk Usage BGG\_PRD\_SRV4

	Free disk space on / (%)	Total disk space on / (Gb)	Used disk space on / (Gb)	Free disk space on /home (%)
11-11-2017	25	1	1	98
10-11-2017	25	1	1	98
9-11-2017	25	1	1	98
8-11-2017	25	1	1	98
7-11-2017	25	1	1	98
6-11-2017	25	1	1	98
5-11-2017	25	1	1	98

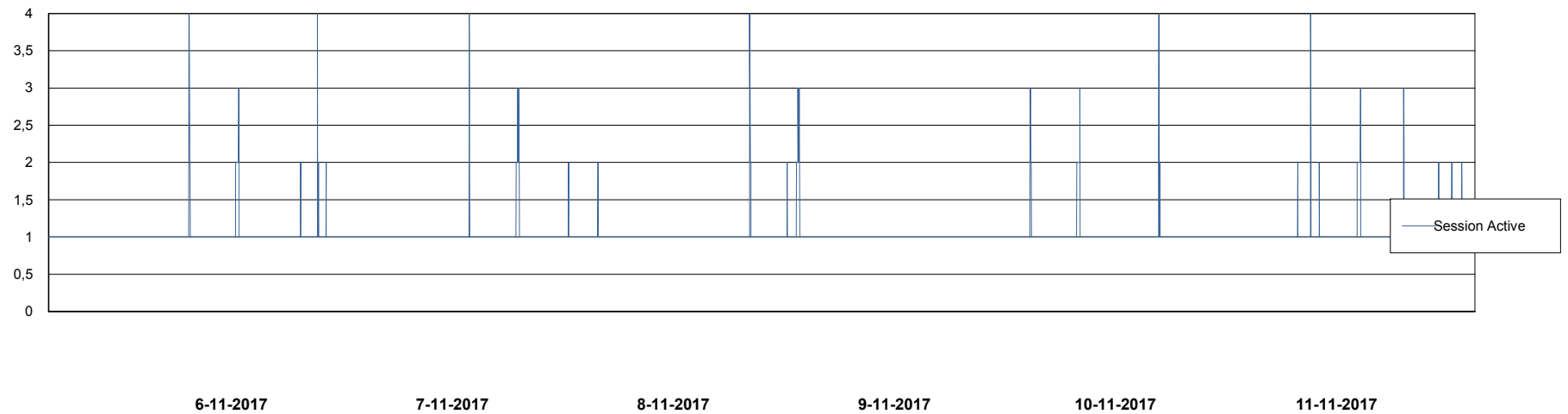
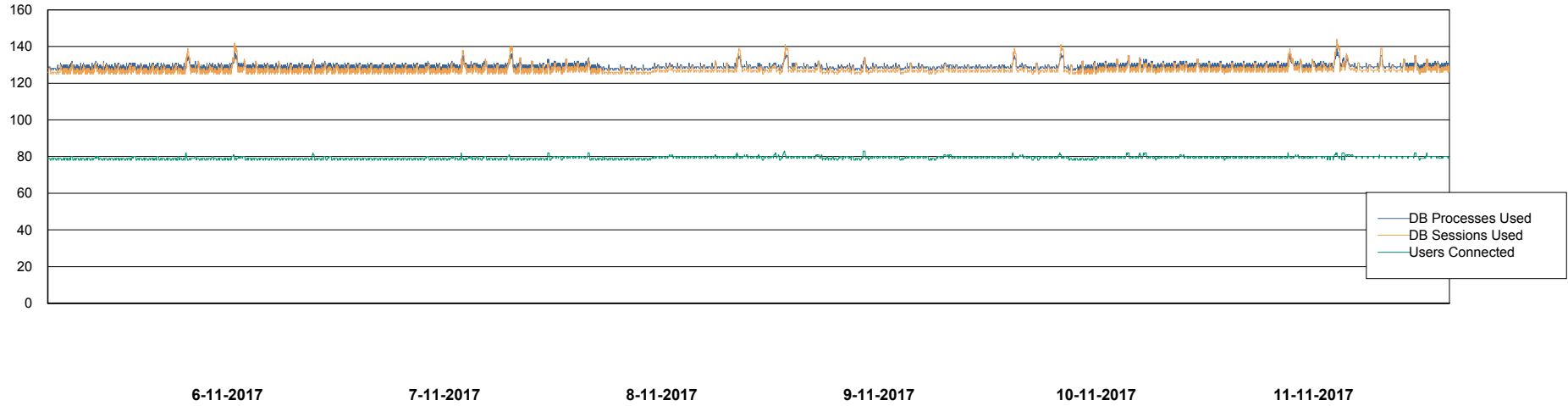
# Weekly SLA Customer Report

Customer BGG\_Production  
Database ID 58



## Database Performance BGGDB\_BI

DB Processes Max 300  
DB Sessions Max 472



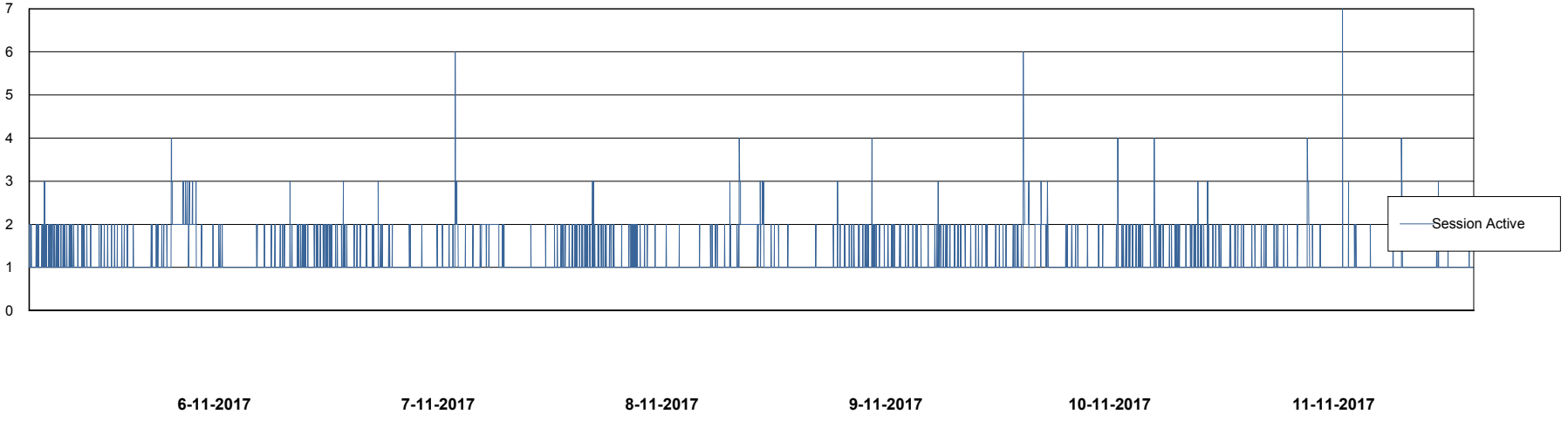
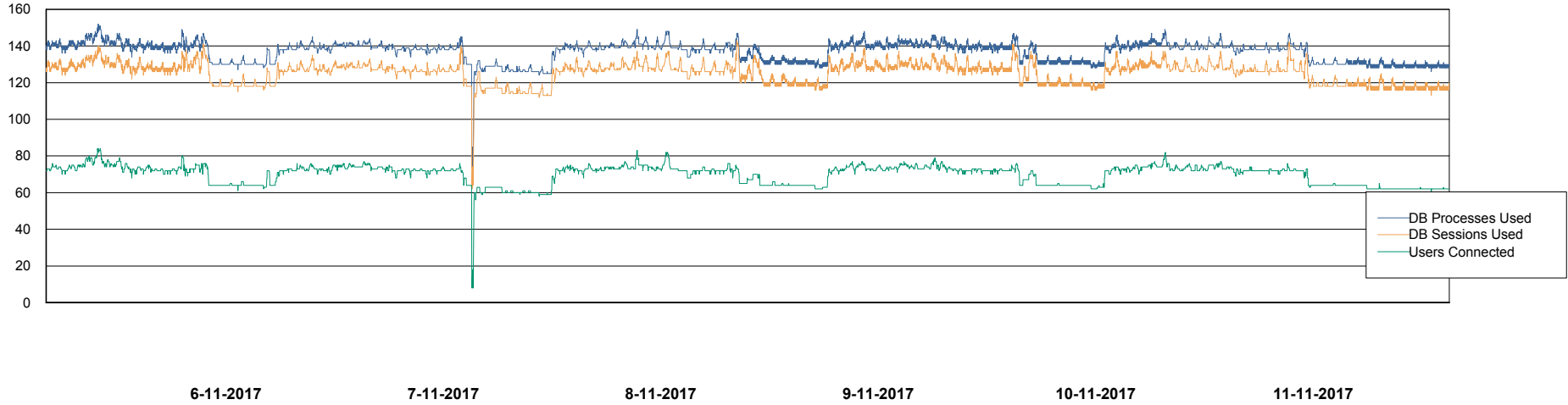
# Weekly SLA Customer Report

Customer BGG\_Production  
Database ID 58



## Database Performance BGGDB\_Production

DB Processes Max 300  
DB Sessions Max 474



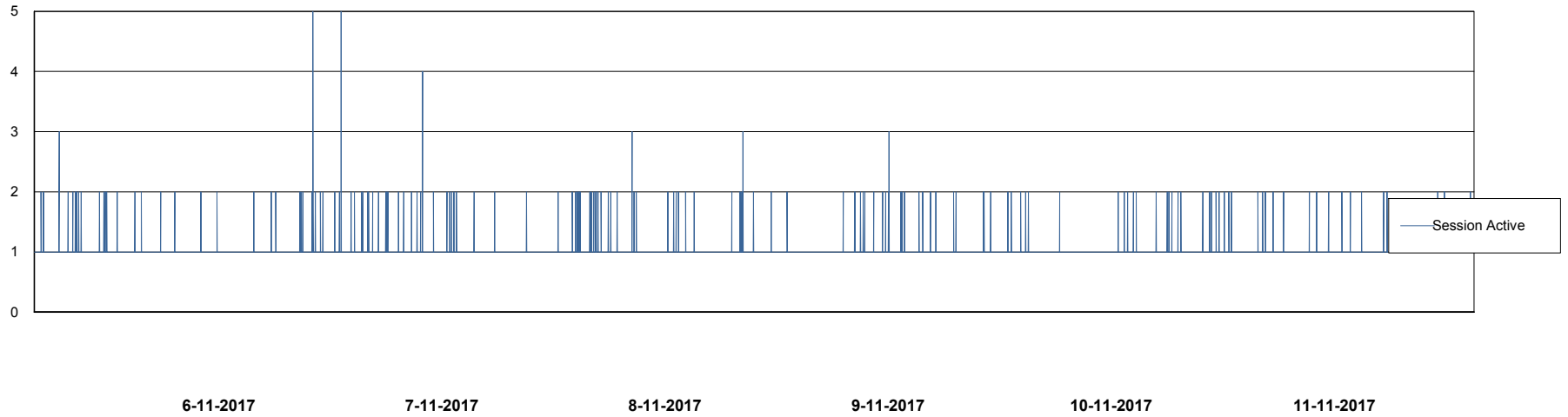
# Weekly SLA Customer Report

Customer BGG\_Production  
Database ID 58



## Database Performance BGGDB\_Standby

DB Processes Max 300  
DB Sessions Max 474



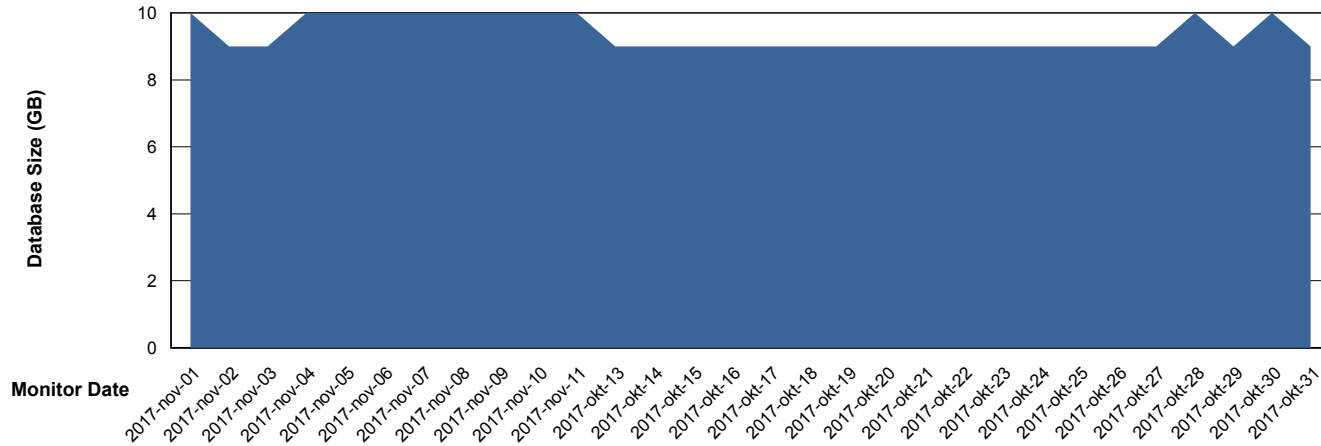
# Weekly SLA Customer Report

Customer BGG\_Production  
Database ID 58



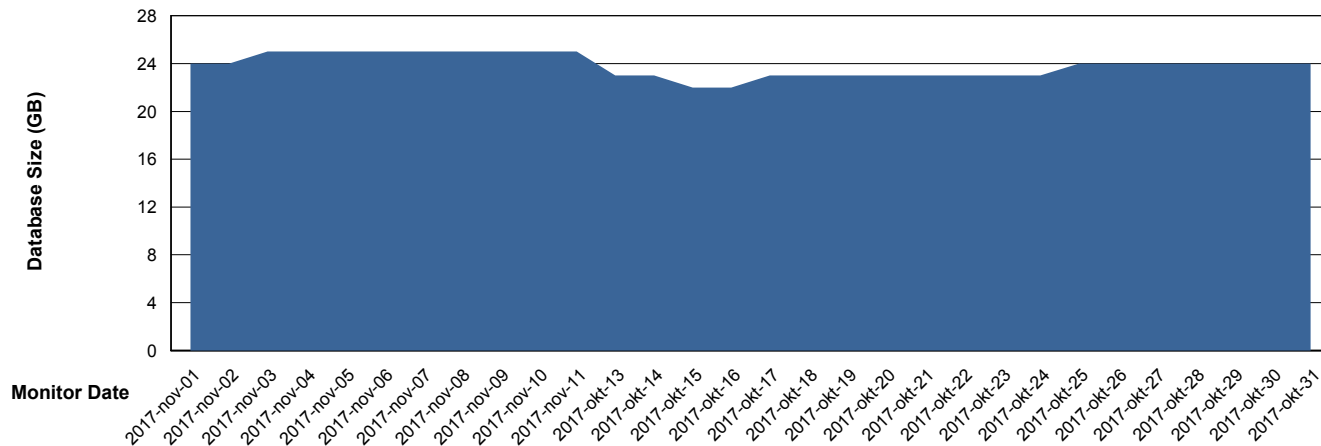
DATABASE SIZE BGGDB\_BI

### Database growth over last month



DATABASE SIZE BGGDB\_Production

### Database growth over last month



# Weekly SLA Customer Report

Customer BGG\_Production  
 Database ID 58



Database Tablespace		BGGDB_BI			
Date	Tablespace Name	Filesize (Gb)	Usedsize (Gb)	Percentage free	
11-11-2017	ABSDATA	2	4	20	
	INDX	2	4	50	
10-11-2017	ABSDATA	2	4	20	
	INDX	2	4	50	
9-11-2017	ABSDATA	2	4	20	
	INDX	2	4	50	
8-11-2017	ABSDATA	2	4	20	
	INDX	2	4	50	
7-11-2017	ABSDATA	2	4	20	
	INDX	2	4	50	
6-11-2017	ABSDATA	2	4	20	
	INDX	2	4	50	
5-11-2017	ABSDATA	2	4	20	
	INDX	2	4	50	

# Weekly SLA Customer Report

Customer BGG\_Production  
 Database ID 58



Database Tablespace BGGDB\_Production

Date	Tablespace Name	Filesize (Gb)	Usedsize (Gb)	Percentage free
11-11-2017	ABSDATA	2	22	15
	INDX	2	1	88
10-11-2017	ABSDATA	2	22	15
	INDX	2	1	88
9-11-2017	ABSDATA	2	22	15
	INDX	2	1	88
8-11-2017	ABSDATA	2	22	15
	INDX	2	1	88
7-11-2017	ABSDATA	2	21	19
	INDX	2	1	88
6-11-2017	ABSDATA	2	21	19
	INDX	2	1	88
5-11-2017	ABSDATA	2	21	19
	INDX	2	1	88

BI Status and last ETL error for BGGDB\_BI

	ma 6/11/2017	di 7/11/2017	wo 8/11/2017	do 9/11/2017	vr 10/11/2017	za 11/11/2017
<b>ABS DataWarehouse ETL Health</b>	OK	OK	OK	OK	OK	OK
<b>ABS DWHStaging ETL Health</b>	OK	OK	OK	OK	OK	OK

# Weekly SLA Customer Report

Customer BGG\_Production  
Database ID 58



Standby Database Health BGG\_Production

## Recovery lag for last 7 days



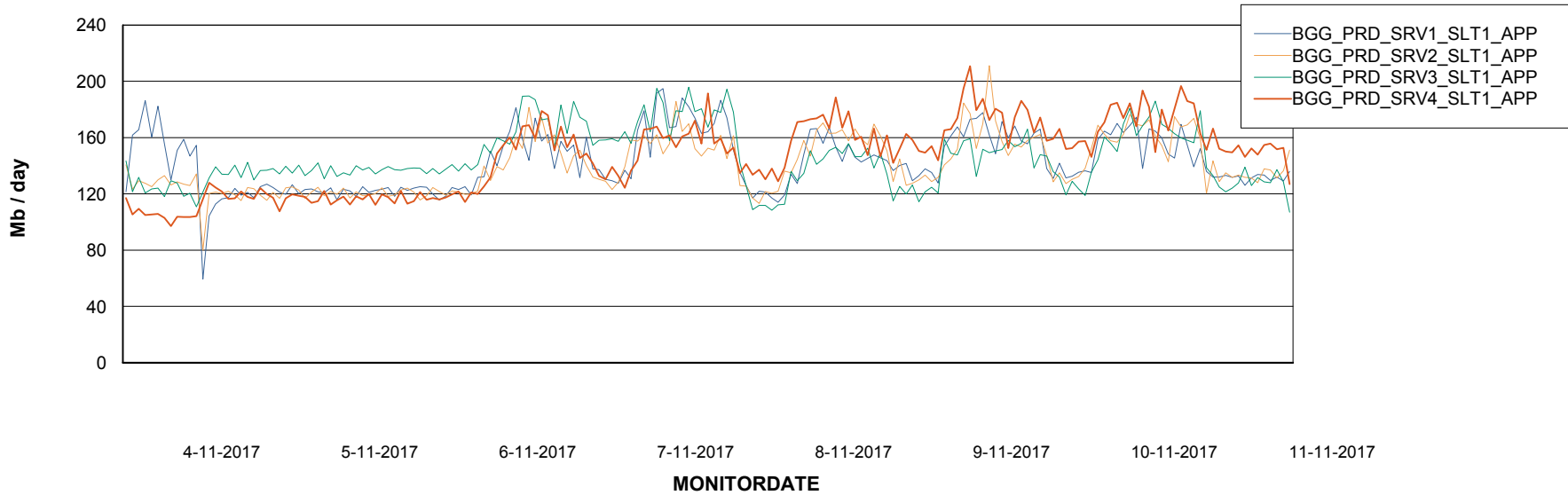
# Weekly SLA Customer Report

Customer BGG\_Production  
Database ID 58

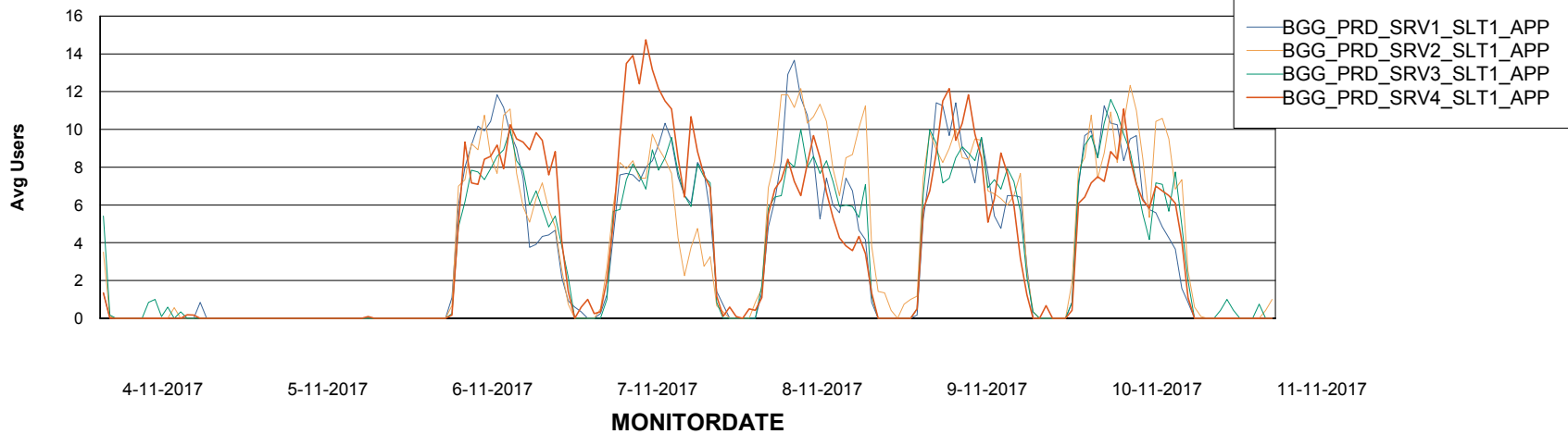


## ABSSolute Application Server Services

### Avg memory used per ABS Server Service



### Avg users per day per ABS server



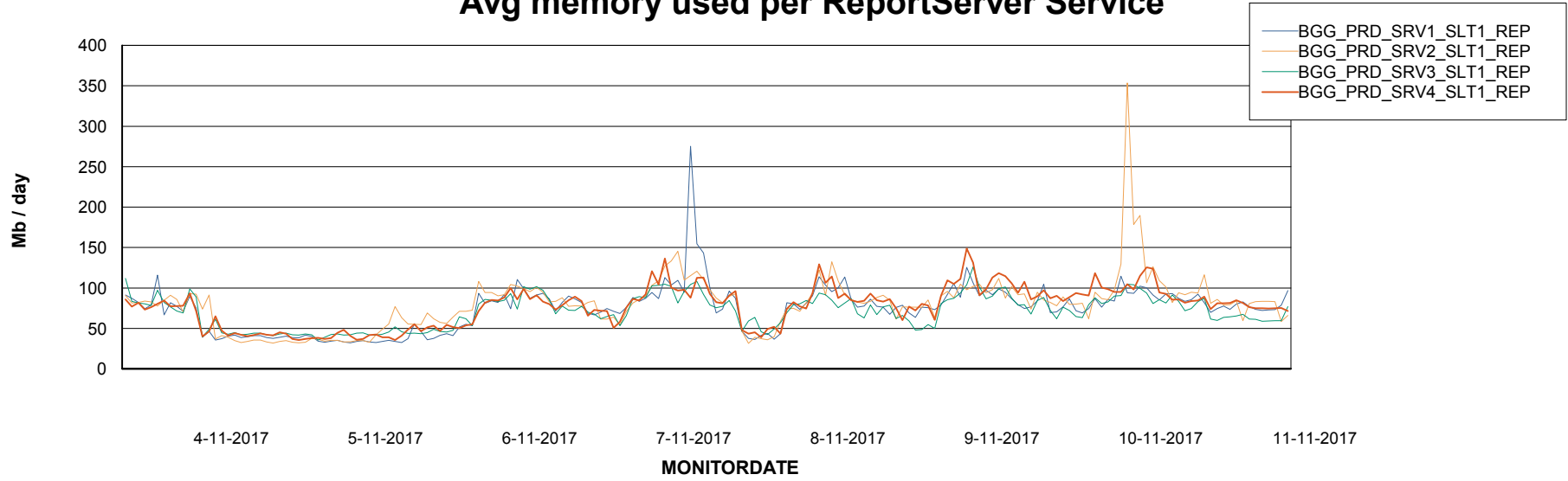
# Weekly SLA Customer Report

Customer BGG\_Production  
Database ID 58



## ABSSolute Application ReportServer Services

### Avg memory used per ReportServer Service



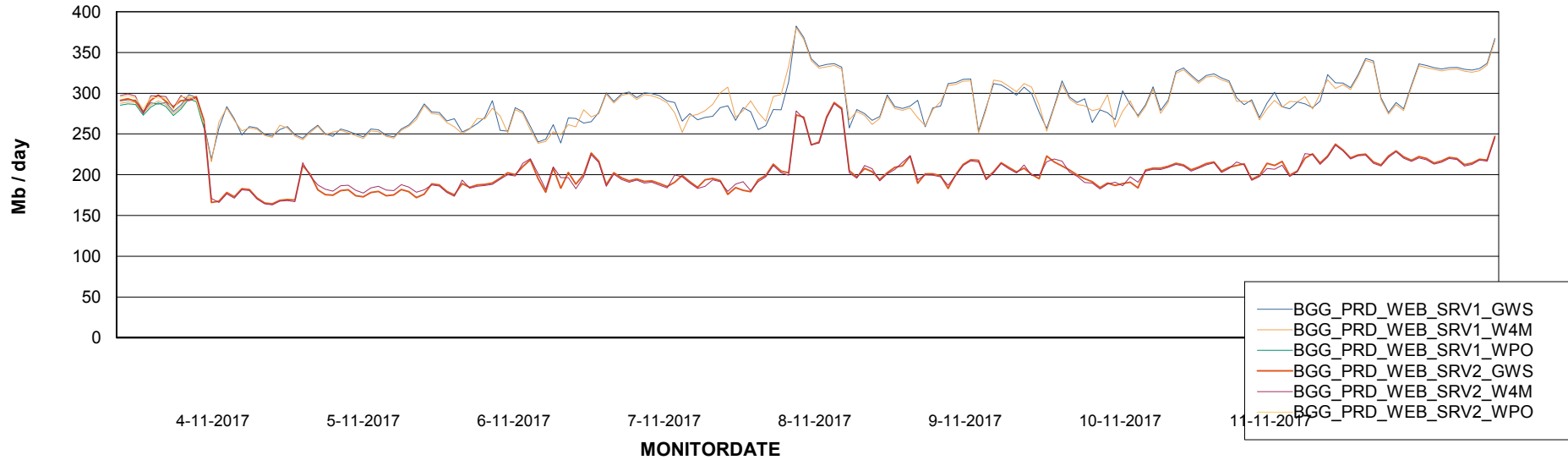
# Weekly SLA Customer Report

Customer BGG\_Production  
Database ID 58



## ABSolute Web Component Services

### Avg memory used per ABS Web component



# Weekly SLA Customer Report

Customer BGG\_Production  
Database ID 58



## Disaster per ABS component

