

# Weekly SLA Customer Report

Customer PHS\_Production  
Database ID 47



## Harddisk Usage PHS\_BI\_GCAB779a

	Free disk space on c: (%)	Total disk space on c: (Gb)	Free disk space on d: (%)	Total disk space on d: (Gb)
28-10-2017	15	150	17	150
27-10-2017	15	150	17	150
26-10-2017	15	150	17	150
25-10-2017	15	150	18	150
24-10-2017	16	150	18	150
23-10-2017	17	150	18	150
22-10-2017	17	150	18	150

## Harddisk Usage PHS\_PRD\_GCAB574b

	Free disk space on c: (%)	Total disk space on c: (Gb)	Free disk space on d: (%)	Total disk space on d: (Gb)	Free disk space on f: (%)	Total disk space on f: (Gb)
28-10-2017	76	150	41	300	49	200
27-10-2017	76	150	41	300	52	200
26-10-2017	76	150	41	300	52	200
25-10-2017	76	150	41	300	51	200
24-10-2017	76	150	41	300	51	200
23-10-2017	76	150	41	300	50	200
22-10-2017	76	150	41	300	51	200

# Weekly SLA Customer Report

Customer PHS\_Production  
 Database ID 47



Harddisk Usage PHS\_PRD\_GCAB576b

	Free disk space on c: (%)	Total disk space on c: (Gb)	Free disk space on d: (%)	Total disk space on d: (Gb)	Free disk space on f: (%)	Total disk space on f: (Gb)
28-10-2017	78	150	43	300	79	100
27-10-2017	78	150	43	300	78	100
26-10-2017	78	150	43	300	78	100
25-10-2017	78	150	43	300	78	100
24-10-2017	78	150	43	300	78	100
23-10-2017	78	150	43	300	75	100
22-10-2017	78	150	43	300	78	100

Harddisk Usage PHS\_PRDWEB\_DCAB573b

	Free disk space on c: (%)	Total disk space on c: (Gb)
28-10-2017	83	100
27-10-2017	83	100
26-10-2017	83	100
25-10-2017	83	100
24-10-2017	83	100
23-10-2017	83	100
22-10-2017	83	100

# Weekly SLA Customer Report

Customer PHS\_Production  
 Database ID 47



Harddisk Usage PHS\_TST\_GCAB575b

	Free disk space on c: (%)	Total disk space on c: (Gb)	Free disk space on d: (%)	Total disk space on d: (Gb)
28-10-2017	15	50	35	300
27-10-2017	15	50	35	300
26-10-2017	15	50	35	300
25-10-2017	15	50	35	300
24-10-2017	15	50	35	300
23-10-2017	15	50	35	300
22-10-2017	15	50	35	300

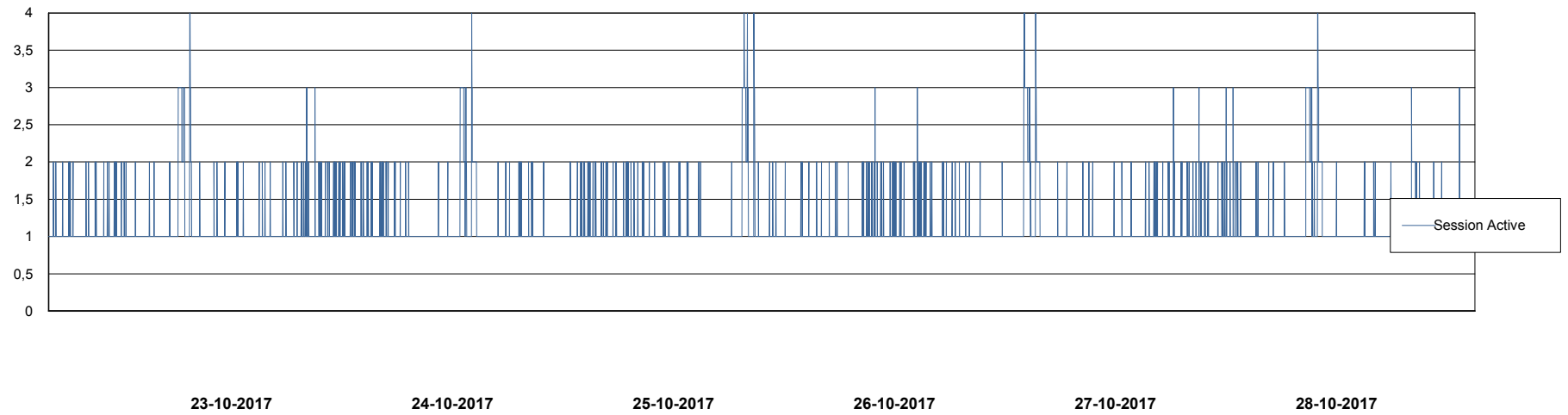
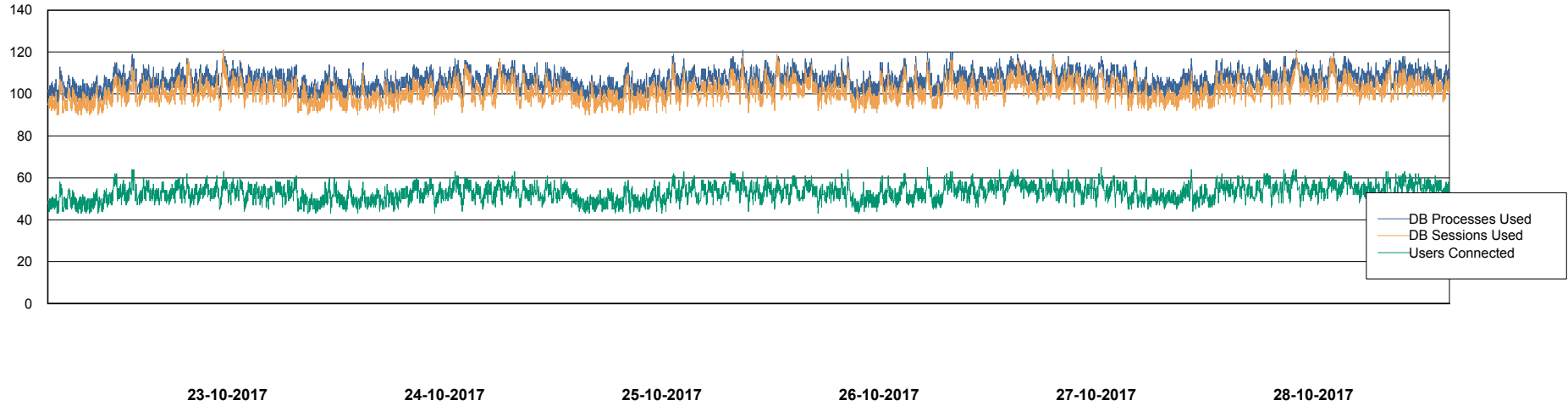
# Weekly SLA Customer Report

Customer PHS\_Production  
Database ID 47



## Database Performance PHSDB\_Production

DB Processes Max 500  
DB Sessions Max 772



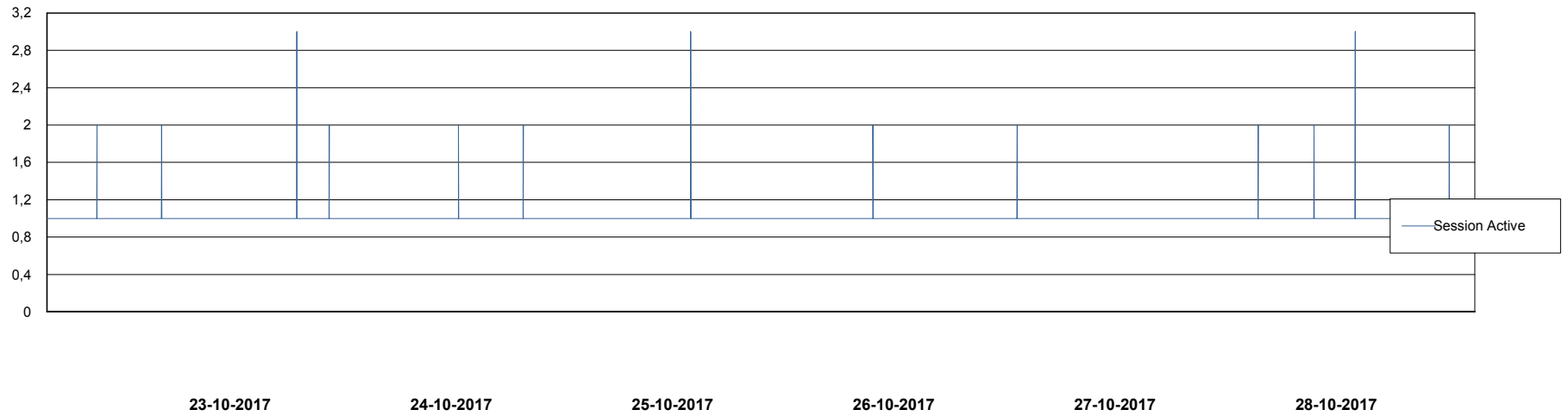
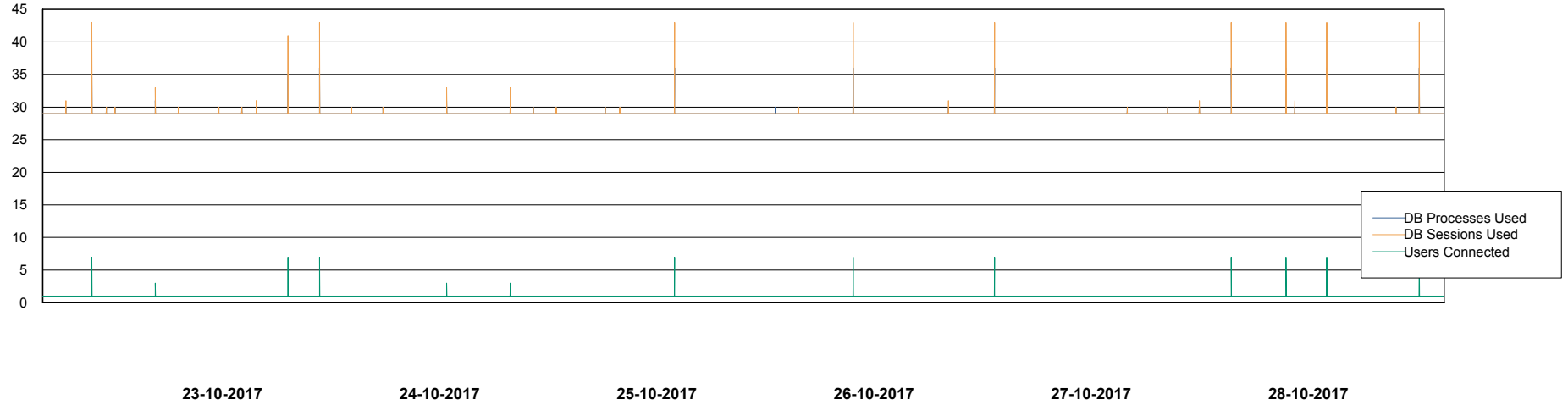
# Weekly SLA Customer Report

Customer PHS\_Production  
Database ID 47



## Database Performance PHSDB\_Standby

DB Processes Max 500  
DB Sessions Max 772



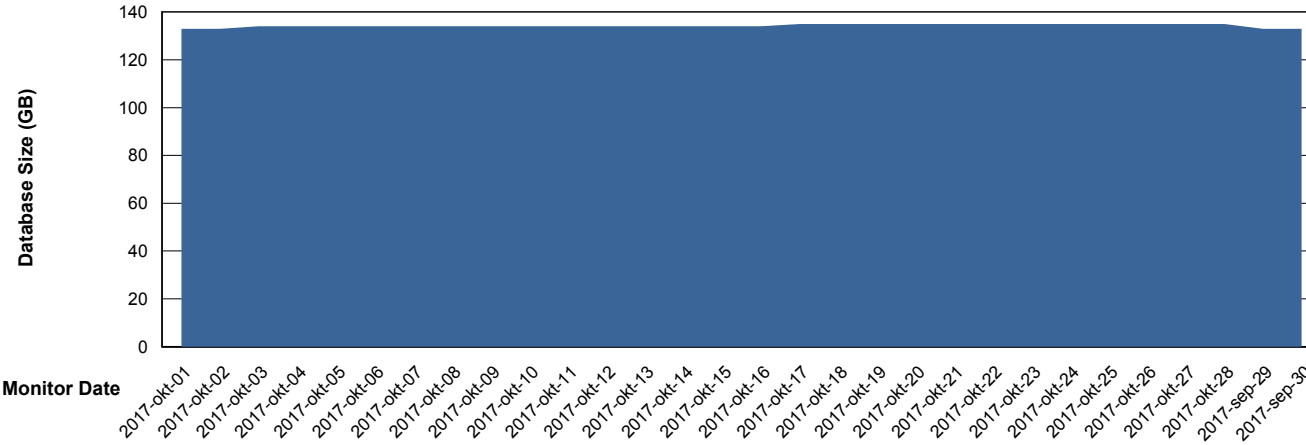
# Weekly SLA Customer Report

Customer PHS\_Production  
 Database ID 47



DATABASE SIZE PHSDB\_Production

## Database growth over last month



Database Tablespace PHSDB\_Production

Date	Tablespace Name	Filesize (Gb)	Usedsize (Gb)	Percentage free
28-10-2017	ABSDATA	2	129	16
	INDX	2	3	40
27-10-2017	ABSDATA	2	129	16
	INDX	2	3	40
26-10-2017	ABSDATA	2	129	16
	INDX	2	3	40
25-10-2017	ABSDATA	2	129	16
	INDX	2	3	40
24-10-2017	ABSDATA	2	129	16
	INDX	2	3	40
23-10-2017	ABSDATA	2	129	16
	INDX	2	3	40
22-10-2017	ABSDATA	2	129	16
	INDX	2	3	40

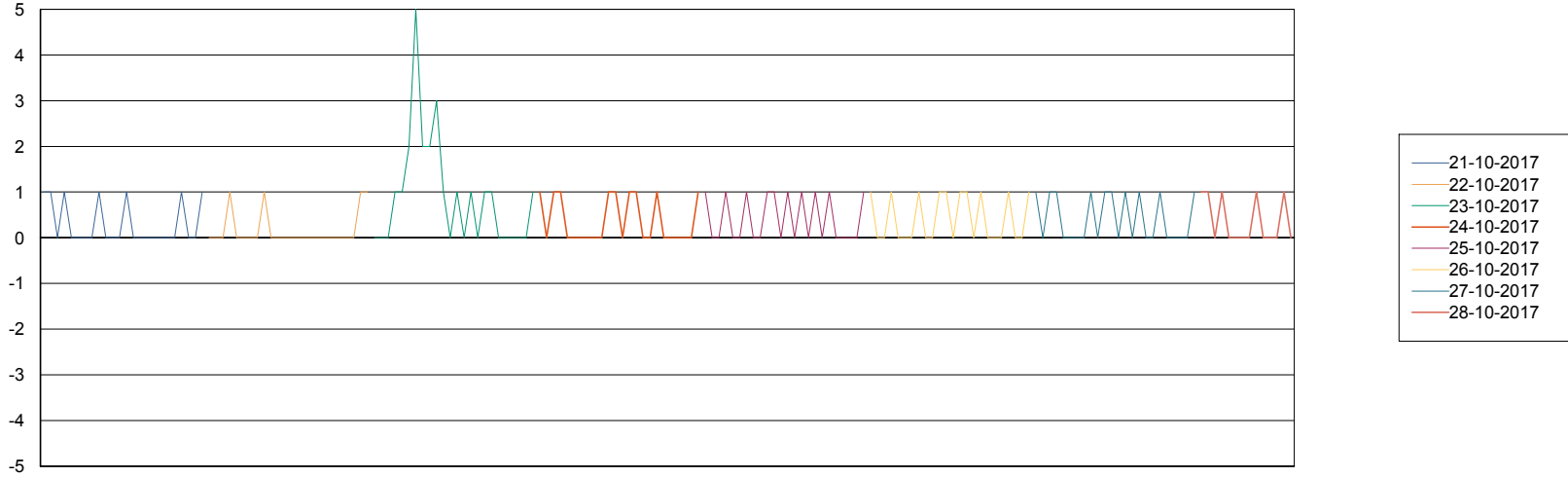
# Weekly SLA Customer Report

Customer PHS\_Production  
Database ID 47



Standby Database Health PHS\_Production

## Recovery lag for last 7 days



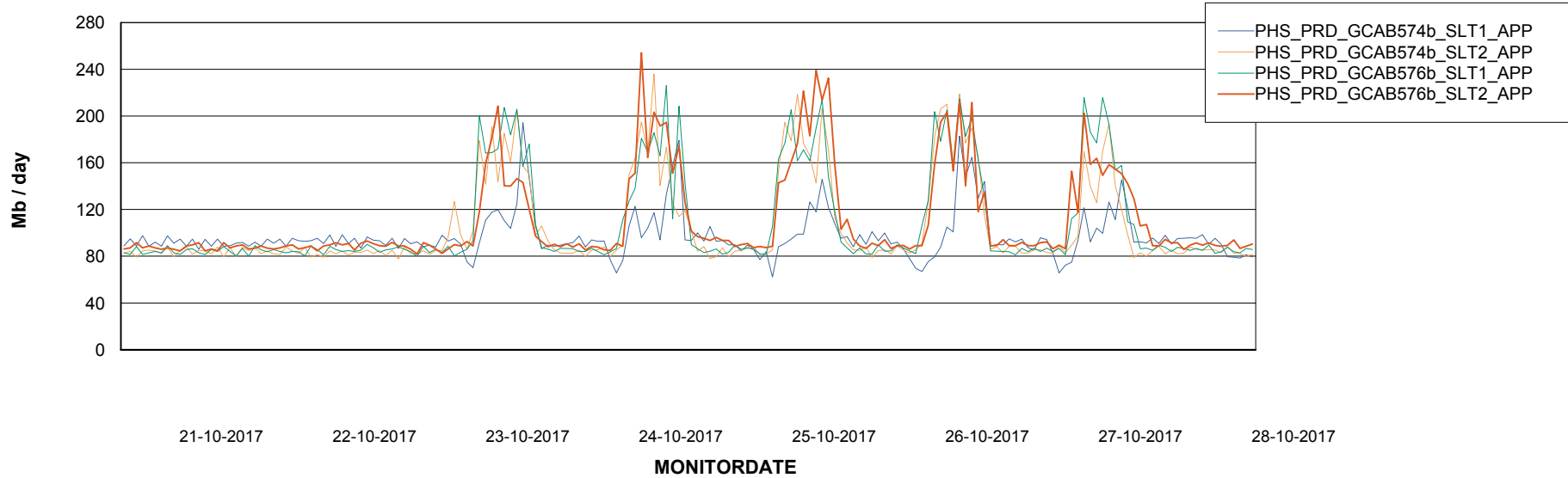
# Weekly SLA Customer Report

Customer PHS\_Production  
Database ID 47

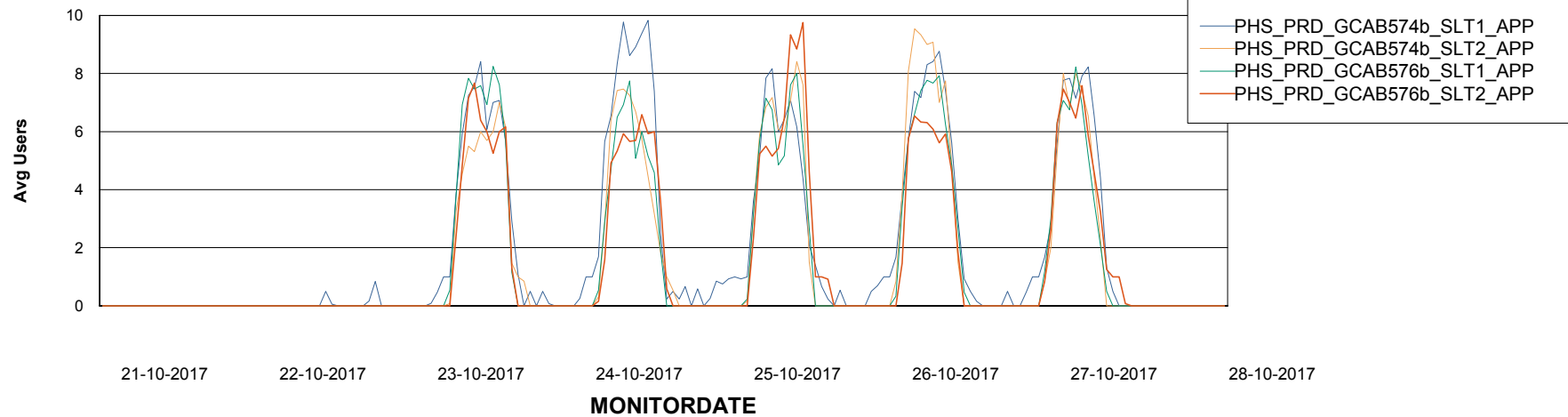


## ABSSolute Application Server Services

### Avg memory used per ABS Server Service



### Avg users per day per ABS server



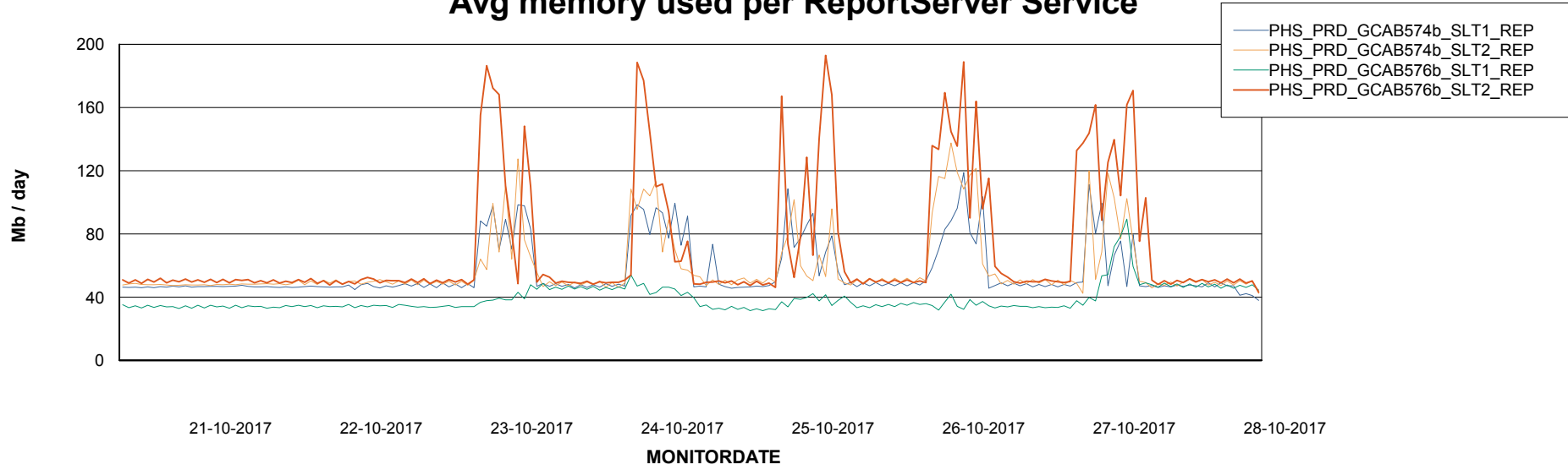
# Weekly SLA Customer Report

Customer PHS\_Production  
Database ID 47



## ABSSolute Application ReportServer Services

### Avg memory used per ReportServer Service



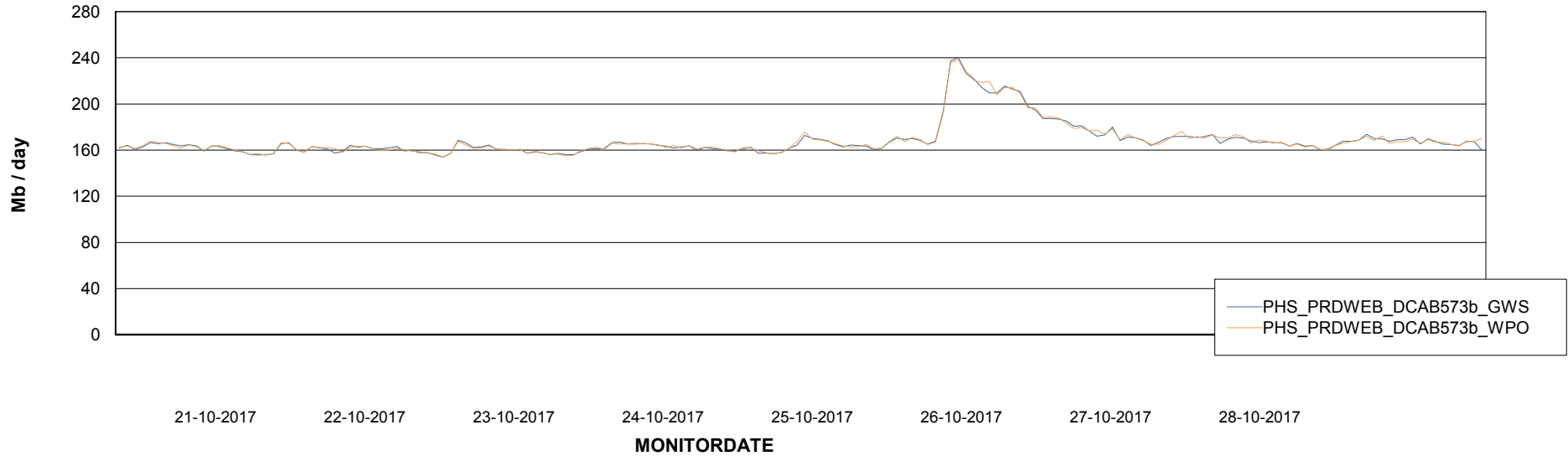
# Weekly SLA Customer Report

Customer PHS\_Production  
Database ID 47



## ABSSolute Web Component Services

### Avg memory used per ABS Web component



# Weekly SLA Customer Report

Customer PHS\_Production  
Database ID 47



## Disaster per ABS component

