

Weekly SLA Customer Report

Customer AUJ_Production
Database ID 41



Harddisk Usage AUJ_PRD_ABS_APP1

	Free disk space on / (%)	Total disk space on / (Gb)	Used disk space on / (Gb)
21-10-2017	27	241	167
20-10-2017	27	241	166
19-10-2017	27	241	166
18-10-2017	27	241	166
17-10-2017	27	241	166
16-10-2017	27	241	166
15-10-2017	27	241	166

Harddisk Usage AUJ_PRD_ABS_APP2

	Free disk space on / (%)	Total disk space on / (Gb)	Used disk space on / (Gb)
21-10-2017	32	241	155
20-10-2017	33	241	155
19-10-2017	33	241	155
18-10-2017	33	241	154
17-10-2017	33	241	154
16-10-2017	33	241	154
15-10-2017	33	241	154

Weekly SLA Customer Report

Customer AUJ_Production
Database ID 41



Harddisk Usage AUJ_PRD_ABS_APP3

	Free disk space on / (%)	Total disk space on / (Gb)	Used disk space on / (Gb)
21-10-2017	91	247	22
20-10-2017	91	247	22
19-10-2017	91	247	22
18-10-2017	91	247	22
17-10-2017	91	247	22
16-10-2017	91	247	22
15-10-2017	91	247	22

Harddisk Usage AUJ_PRD_ORACLE_BI1

	Free disk space on / (%)	Total disk space on / (Gb)	Used disk space on / (Gb)
21-10-2017	13	526	435
20-10-2017	13	526	435
19-10-2017	13	526	435
18-10-2017	13	526	435
17-10-2017	13	526	435
16-10-2017	13	526	434
15-10-2017	13	526	434

Weekly SLA Customer Report

Customer AUJ_Production
Database ID 41



Harddisk Usage AUJ_PRD_ORACLE4

	Free disk space on / (%)	Total disk space on / (Gb)	Used disk space on / (Gb)	Free disk space on /bk (%)	Total disk space on /bk (Gb)	Used disk space on /bk (Gb)	Free disk space on /data (%)	Total disk space on /data (Gb)	Used disk space on /da /data
21-10-2017	98	534	10	73	4,436	1,151	83	4,436	725
20-10-2017	98	534	10	72	4,436	1,160	83	4,436	725
19-10-2017	98	534	10	72	4,436	1,159	83	4,436	725
18-10-2017	98	534	10	73	4,436	1,158	83	4,436	725
17-10-2017	98	534	10	73	4,436	1,157	83	4,436	725
16-10-2017	98	534	10	73	4,436	1,156	83	4,436	725
15-10-2017	98	534	10	73	4,436	1,151	83	4,436	725

Harddisk Usage AUJ_PRD_ORACLE5

	Free disk space on / (%)	Total disk space on / (Gb)	Used disk space on / (Gb)	Free disk space on /bk (%)	Total disk space on /bk (Gb)	Used disk space on /bk (Gb)	Free disk space on /data (%)	Total disk space on /data (Gb)	Used disk space on /da /data
21-10-2017	98	534	11	95	4,436	224	83	4,436	728
20-10-2017	98	534	11	95	4,436	227	83	4,436	728
19-10-2017	98	534	11	95	4,436	226	83	4,436	728
18-10-2017	98	534	11	95	4,436	227	83	4,436	728
17-10-2017	98	534	11	95	4,436	225	83	4,436	728
16-10-2017	98	534	11	95	4,436	218	83	4,436	728
15-10-2017	98	534	11	95	4,436	213	83	4,436	728

Weekly SLA Customer Report

Customer AUJ_Production
Database ID 41



Harddisk Usage AUJ_PRD_ORACLE6

	Free disk space on / (%)	Total disk space on / (Gb)	Used disk space on / (Gb)	Free disk space on /bk (%)	Total disk space on /bk (Gb)	Used disk space on /bk (Gb)	Free disk space on /data (%)	Total disk space on /data (Gb)	Used disk space on /da /data
21-10-2017	89	534	58	89	534	58	83	4,436	720
20-10-2017	88	534	61	88	534	61	83	4,436	720
19-10-2017	88	534	61	88	534	61	83	4,436	720
18-10-2017	88	534	61	88	534	61	83	4,436	720
17-10-2017	89	534	57	89	534	57	83	4,436	720
16-10-2017	90	534	50	90	534	50	83	4,436	720
15-10-2017	91	534	46	91	534	46	83	4,436	720

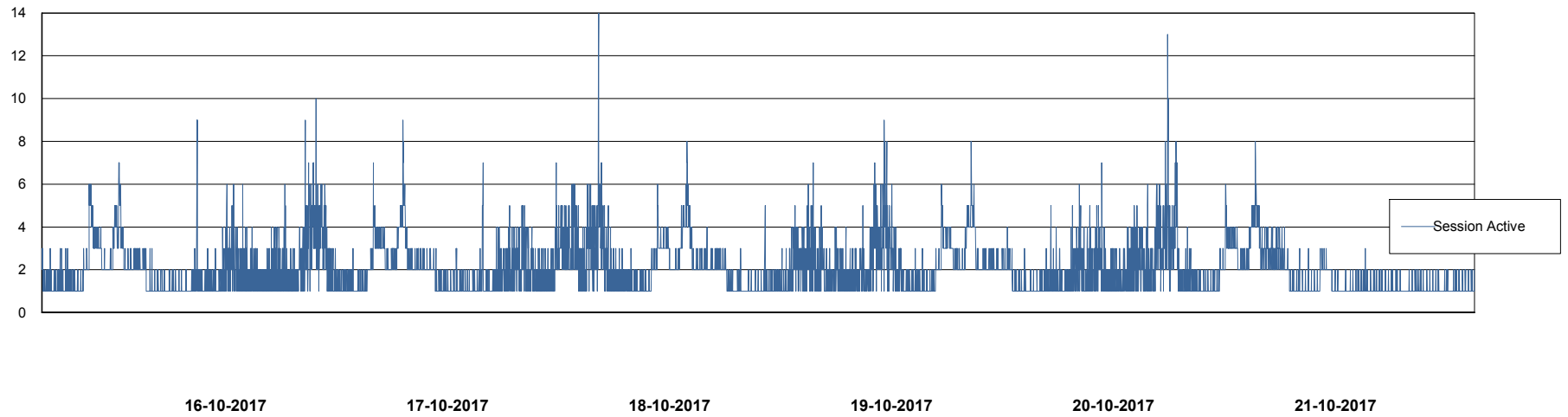
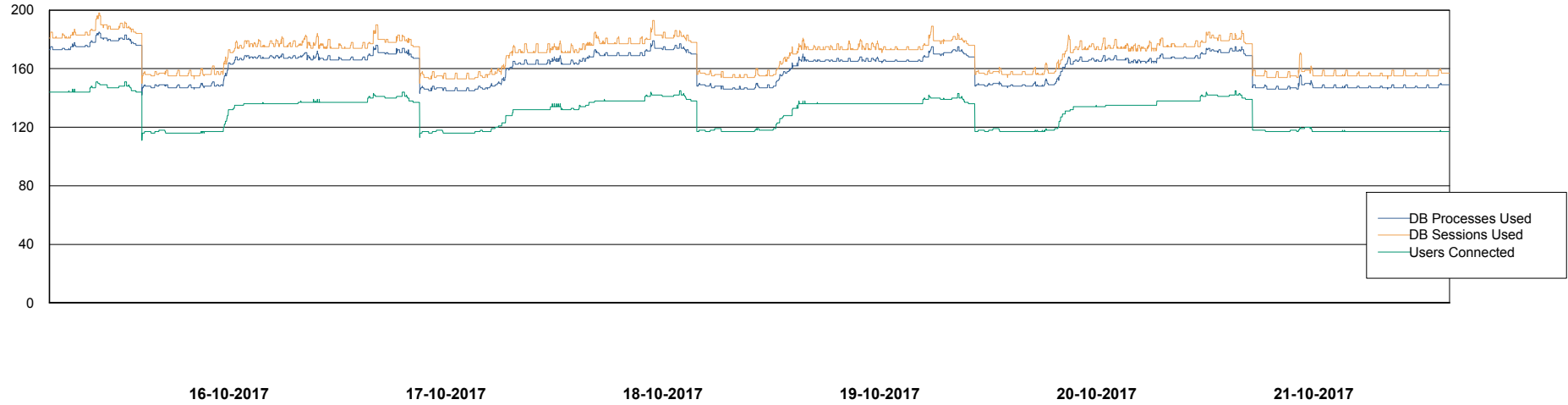
Weekly SLA Customer Report

Customer AUJ_Production
Database ID 41



Database Performance AUJ_DB4_Primary

DB Processes Max 300
DB Sessions Max 480



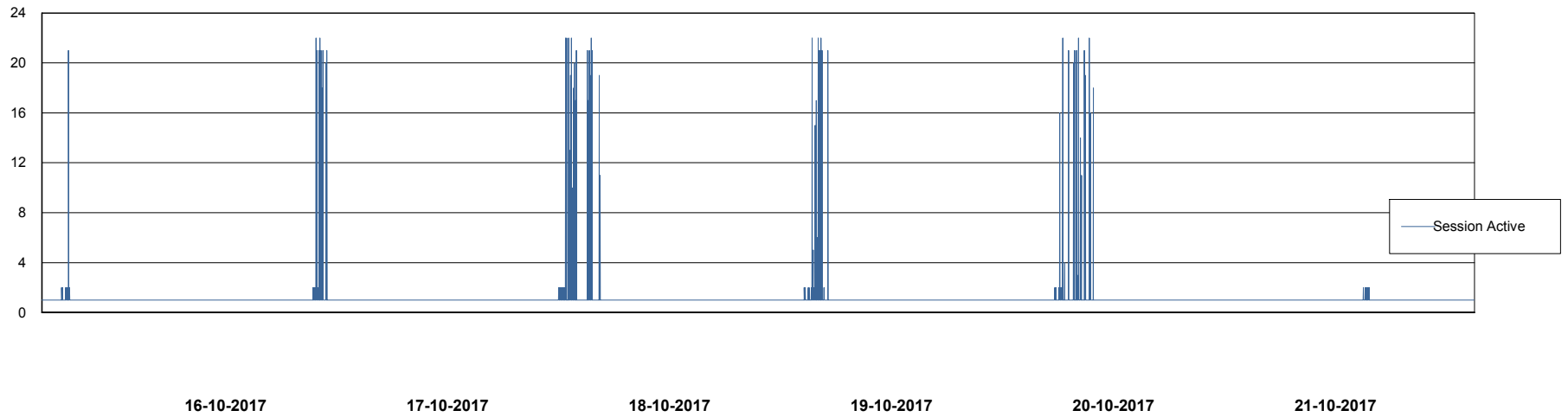
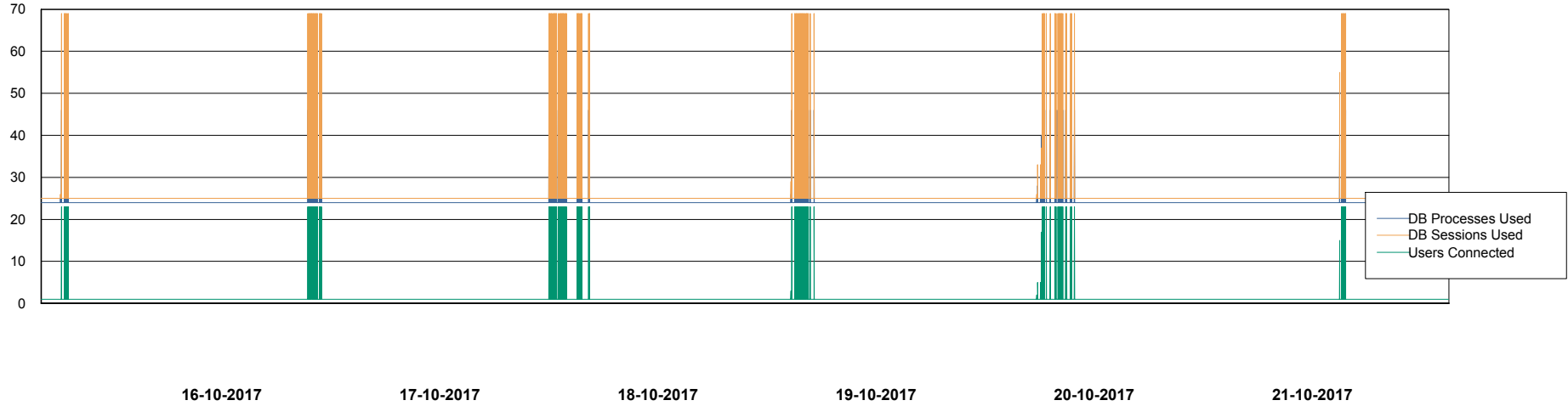
Weekly SLA Customer Report

Customer AUJ_Production
Database ID 41



Database Performance AUJ_DB5_Standby

DB Processes Max 300
DB Sessions Max 480



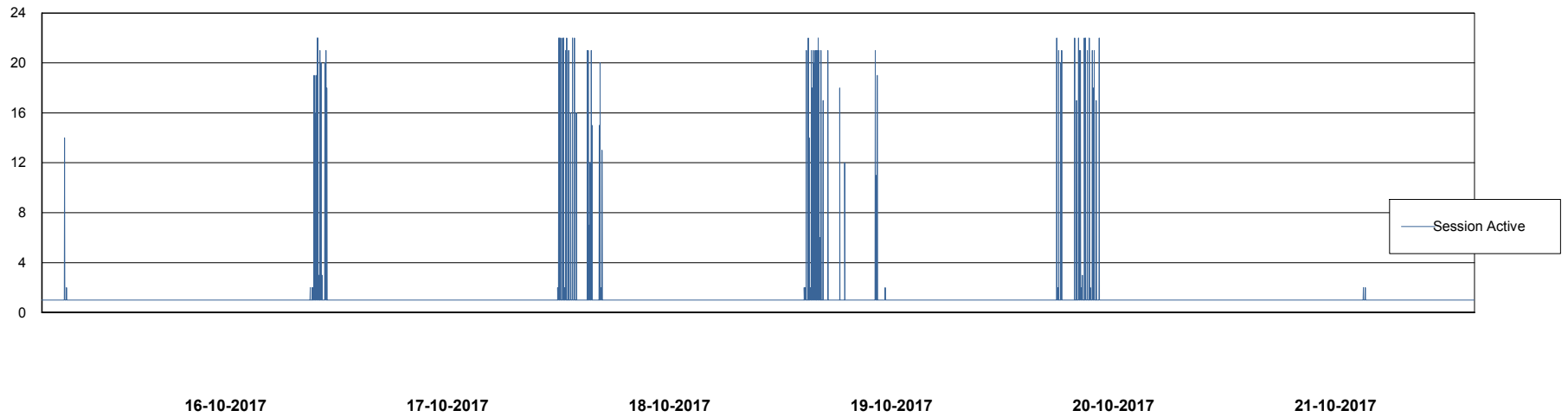
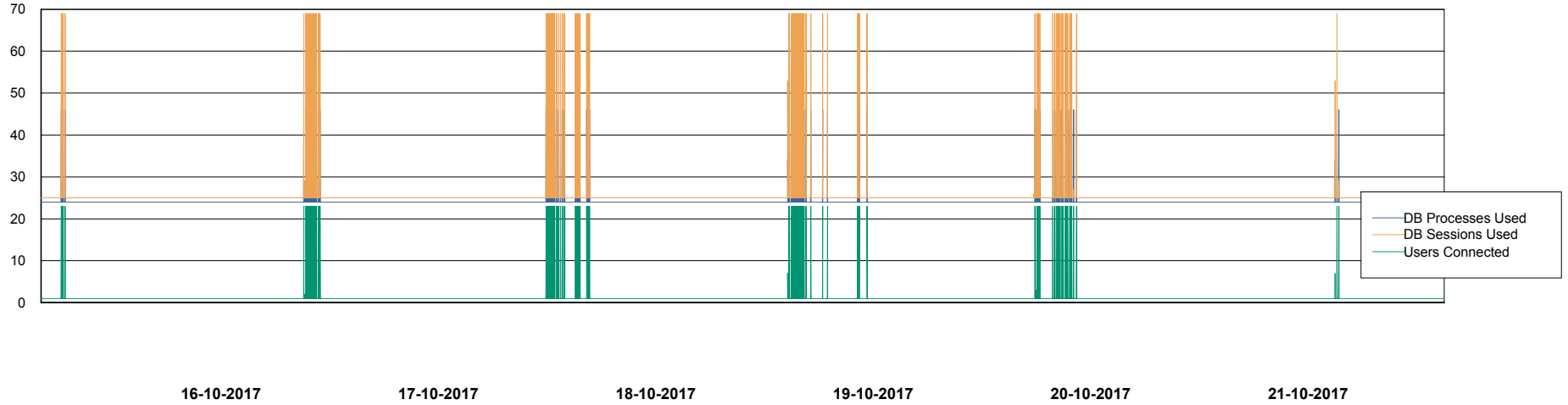
Weekly SLA Customer Report

Customer AUJ_Production
Database ID 41



Database Performance AUJ_DB6_Standby2

DB Processes Max 300
DB Sessions Max 480



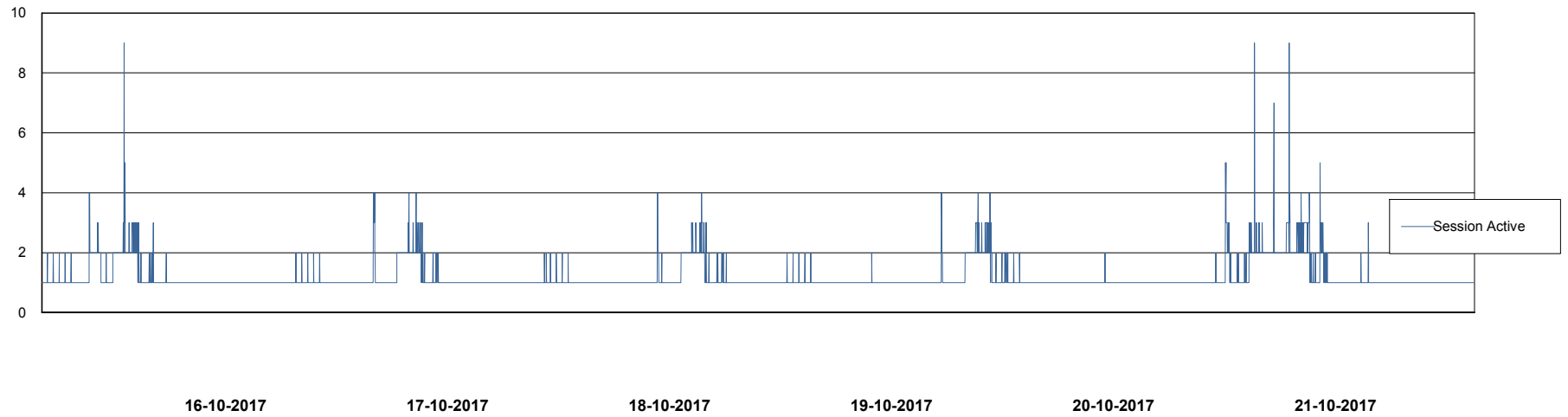
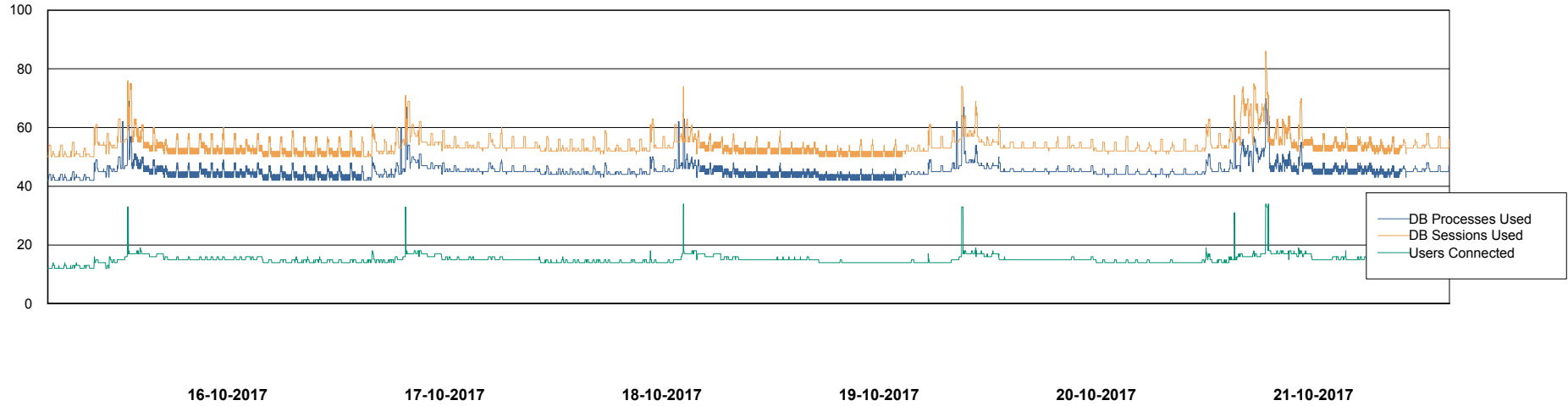
Weekly SLA Customer Report

Customer AUJ_Production
Database ID 41



Database Performance AUJDB_BI

DB Processes Max 500
DB Sessions Max 772



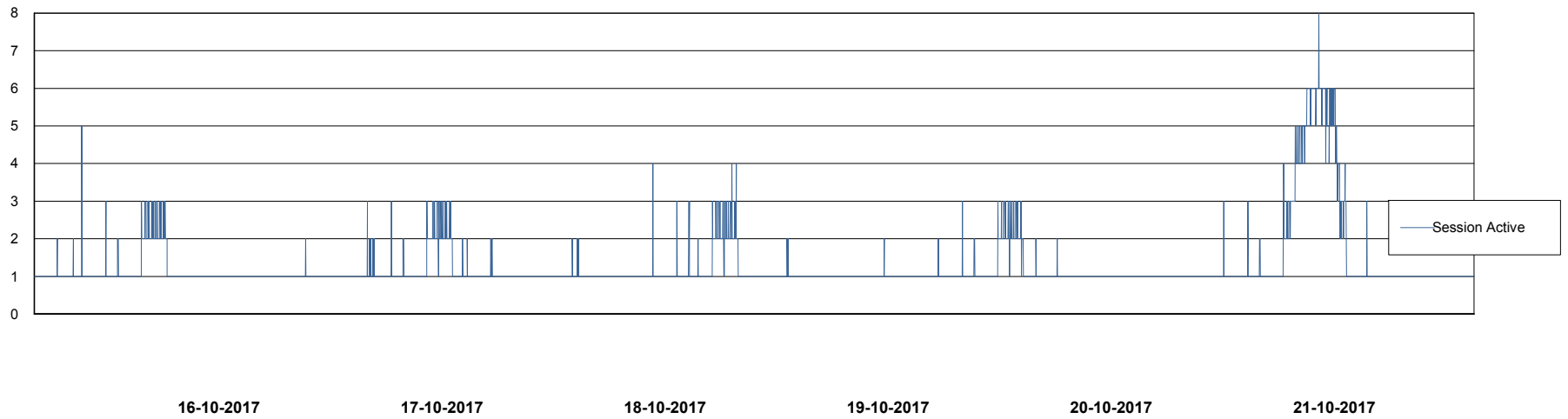
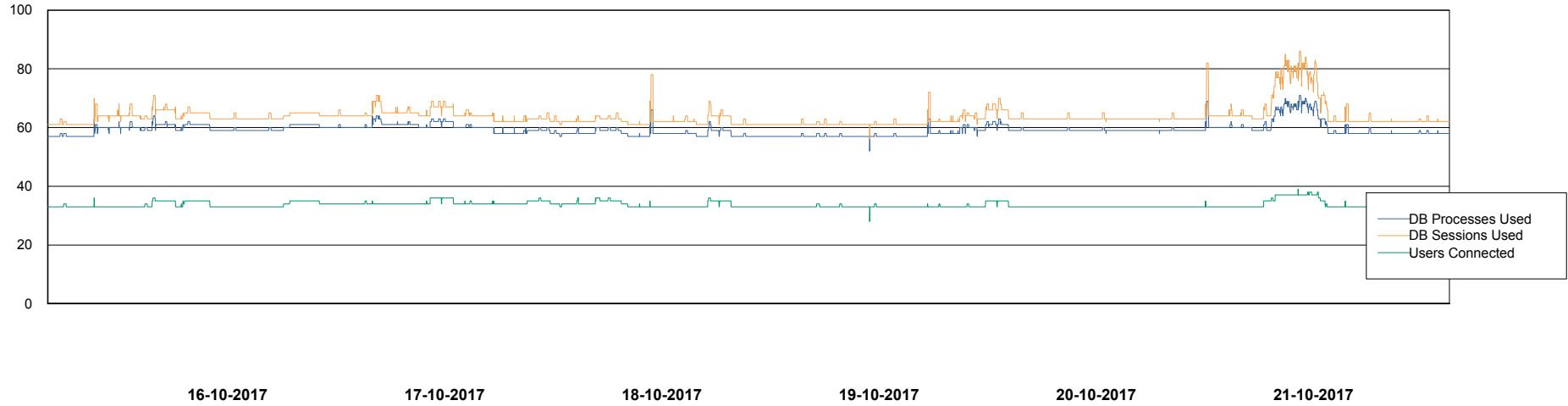
Weekly SLA Customer Report

Customer AUJ_Production
Database ID 41



Database Performance AUJDB_BI_TS1

DB Processes Max 150
DB Sessions Max 248



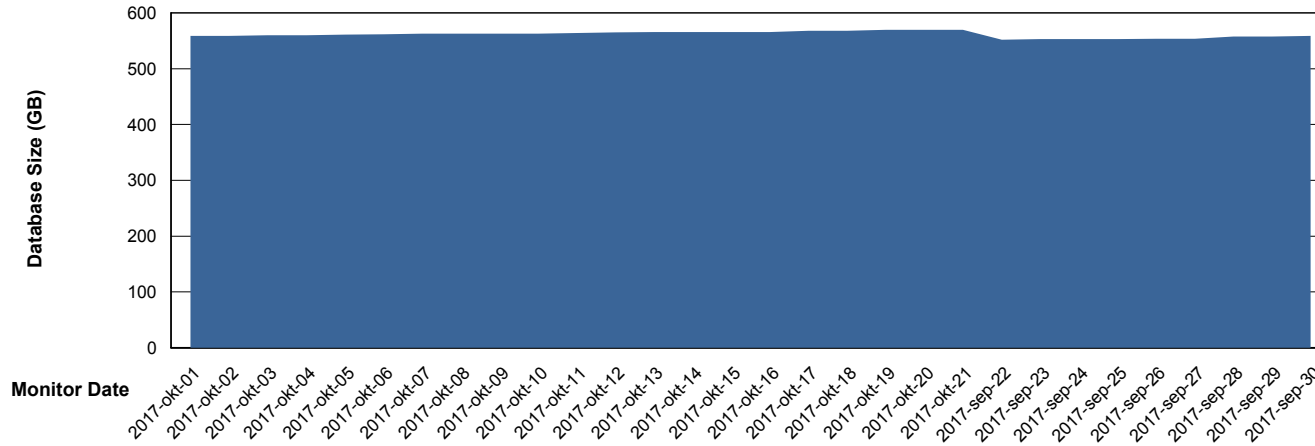
Weekly SLA Customer Report

Customer AUJ_Production
Database ID 41



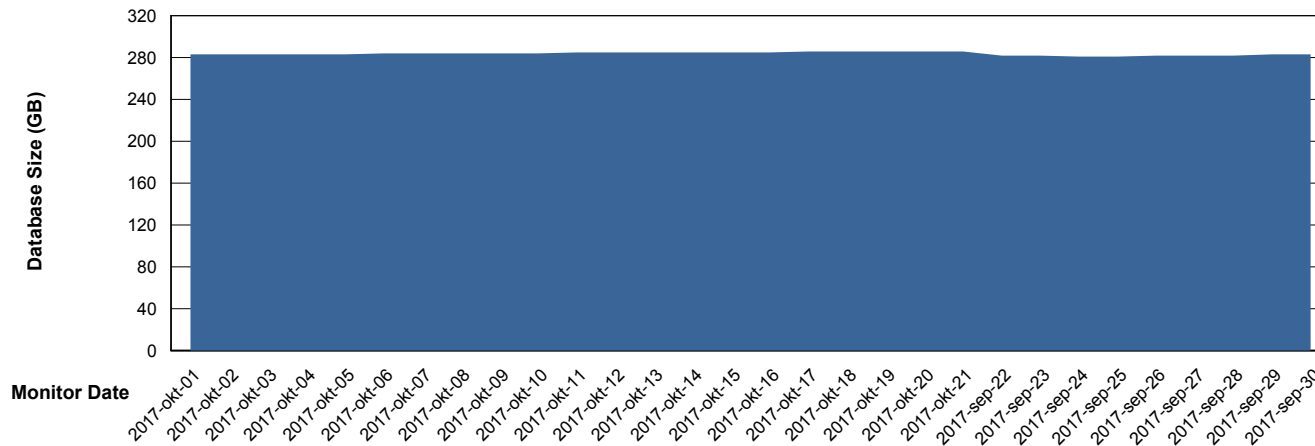
DATABASE SIZE AUJ_DB4_Primary

Database growth over last month



DATABASE SIZE AUJDB_BI

Database growth over last month



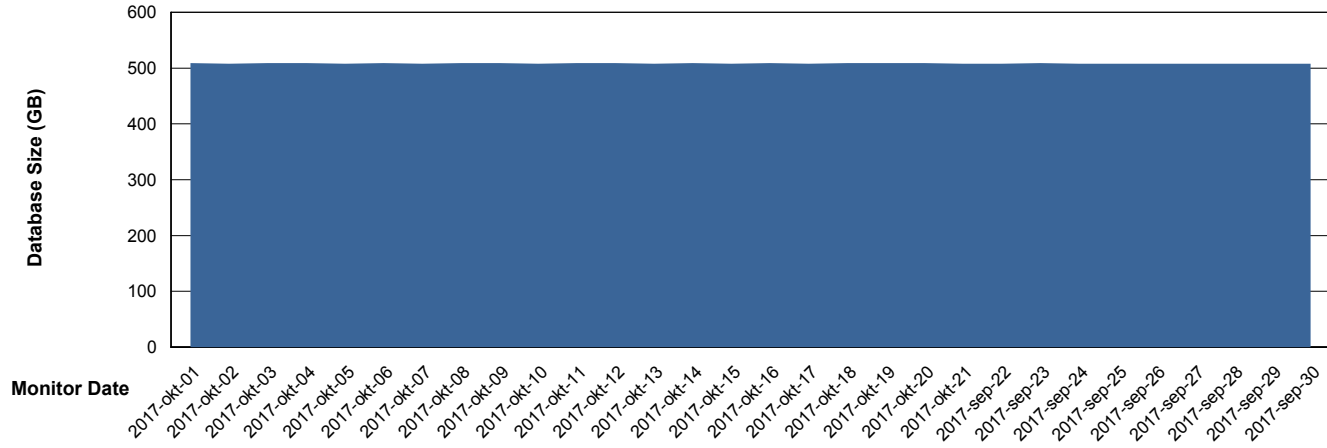
Weekly SLA Customer Report

Customer AUJ_Production
Database ID 41



DATABASE SIZE AUJDB_BI_TS1

Database growth over last month



Weekly SLA Customer Report

Customer AUJ_Production
Database ID 41



Database Tablespace		AUJ_DB4_Primary		
Date	Tablespace Name	Filesize (Gb)	Usedsize (Gb)	Percentage free
21-10-2017	ABSDATA	2	272	13
	INDX	2	297	16
20-10-2017	ABSDATA	2	272	13
	INDX	2	297	16
19-10-2017	ABSDATA	2	272	13
	INDX	2	296	16
18-10-2017	ABSDATA	2	271	13
	INDX	2	296	16
17-10-2017	ABSDATA	2	271	13
	INDX	2	295	16
16-10-2017	ABSDATA	2	271	13
	INDX	2	295	16
15-10-2017	ABSDATA	2	271	13
	INDX	2	294	17

Weekly SLA Customer Report

Customer AUJ_Production
Database ID 41



Database Tablespace		AUJDB_BI		
Date	Tablespace Name	Filesize (Gb)	Usedsize (Gb)	Percentage free
21-10-2017	ABSDATA	2	88	21
	INDX	2	194	14
20-10-2017	ABSDATA	2	88	21
	INDX	2	194	14
19-10-2017	ABSDATA	2	88	21
	INDX	2	193	14
18-10-2017	ABSDATA	2	88	21
	INDX	2	193	14
17-10-2017	ABSDATA	2	88	21
	INDX	2	193	14
16-10-2017	ABSDATA	2	88	21
	INDX	2	193	14
15-10-2017	ABSDATA	2	88	21
	INDX	2	193	14

Weekly SLA Customer Report

Customer AUJ_Production
 Database ID 41



Database Tablespace AUJDB_BI_TS1

Date	Tablespace Name	Filesize (Gb)	Usedsize (Gb)	Percentage free
21-10-2017	ABSDATA	2	219	22
	INDX	2	285	30
20-10-2017	ABSDATA	2	219	22
	INDX	2	285	30
19-10-2017	ABSDATA	2	219	22
	INDX	2	285	30
18-10-2017	ABSDATA	2	219	22
	INDX	2	285	30
17-10-2017	ABSDATA	2	219	22
	INDX	2	285	30
16-10-2017	ABSDATA	2	219	22
	INDX	2	285	30
15-10-2017	ABSDATA	2	219	22
	INDX	2	285	30

BI Status and last ETL error for AUJDB_BI_TS1

	ma 16/10/2017	di 17/10/2017	wo 18/10/2017	do 19/10/2017	vr 20/10/2017	za 21/10/2017
ABS DataWarehouse ETL Health	OK	OK	OK	OK	OK	OK
ABS DWHStaging ETL Health	OK	OK	OK	OK	OK	OK

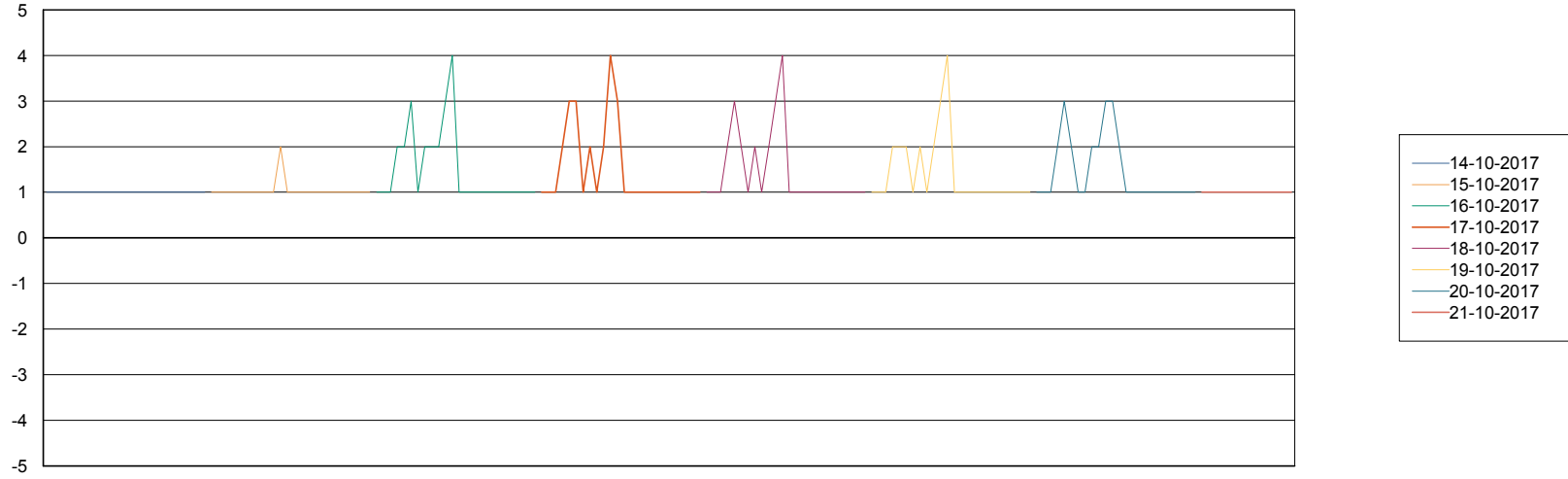
Weekly SLA Customer Report

Customer AUJ_Production
Database ID 41



Standby Database Health AUJ_Production

Recovery lag for last 7 days



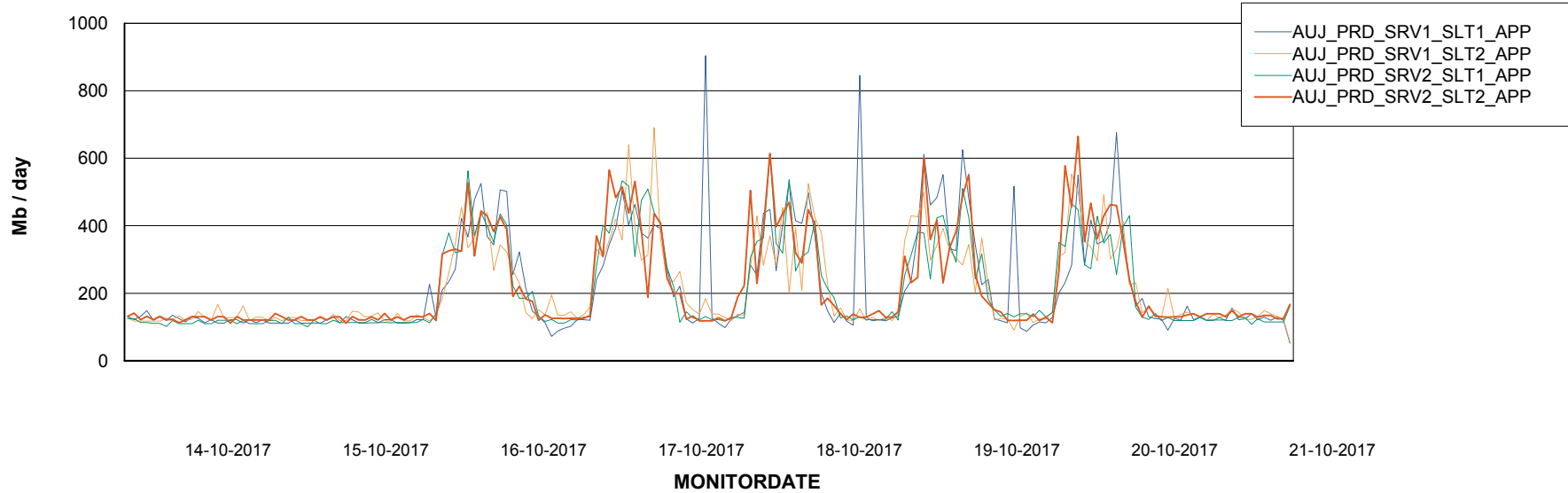
Weekly SLA Customer Report

Customer AUJ_Production
Database ID 41

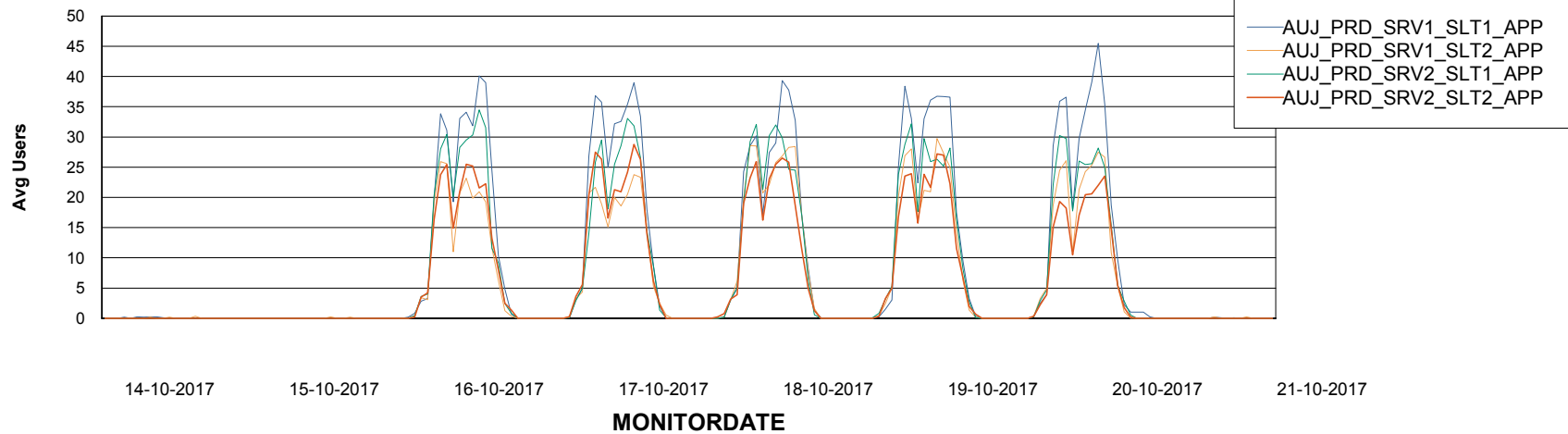


ABSSolute Application Server Services

Avg memory used per ABS Server Service



Avg users per day per ABS server



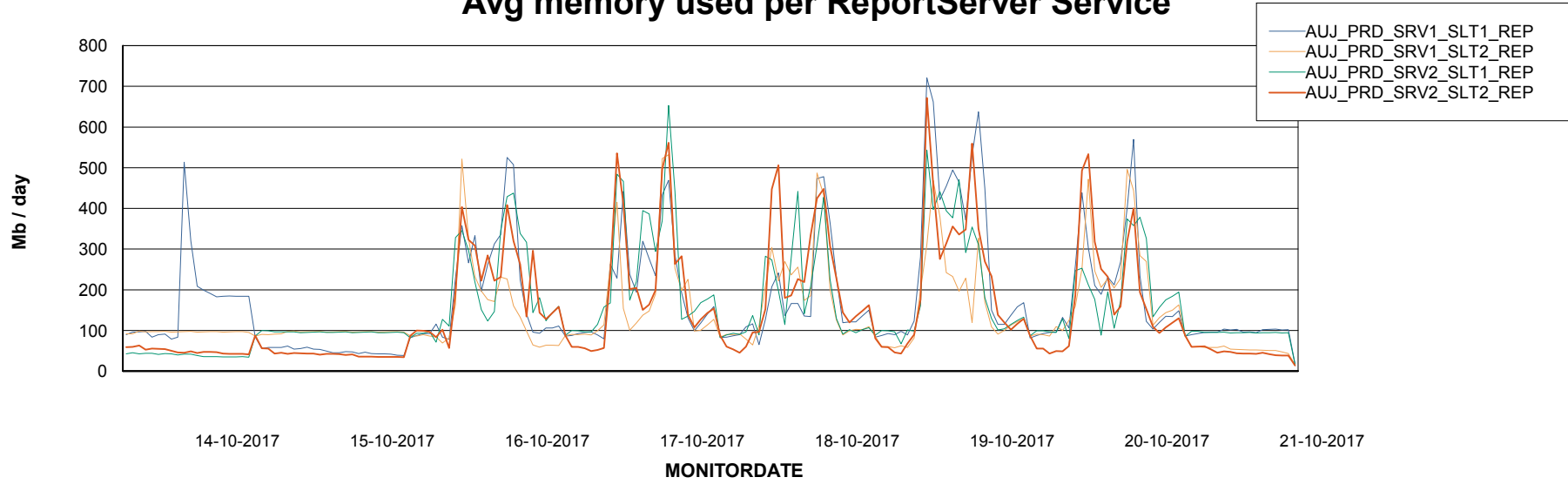
Weekly SLA Customer Report

Customer AUJ_Production
Database ID 41



ABSolute Application ReportServer Services

Avg memory used per ReportServer Service



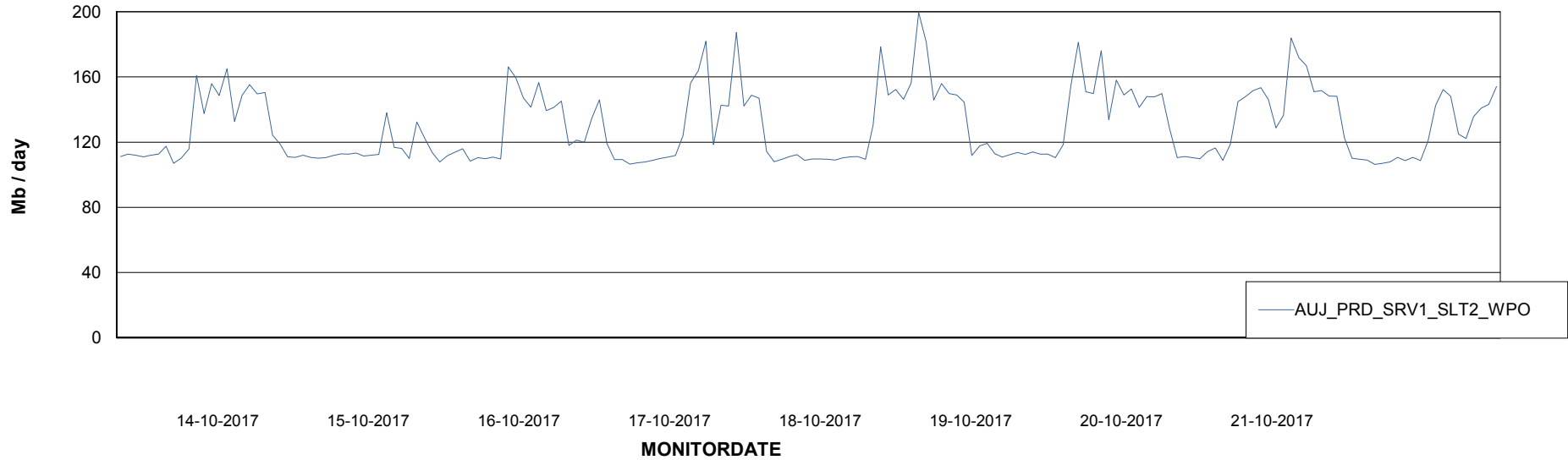
Weekly SLA Customer Report

Customer AUJ_Production
Database ID 41



ABSolute Web Component Services

Avg memory used per ABS Web component



Weekly SLA Customer Report

Customer AUJ_Production
Database ID 41



Disaster per ABS component

